

Surface Mount

# Monolithic Amplifier

LEE2-6+

50Ω DC to 7 GHz



2mm x 2mm

## The Big Deal

- Low Noise figure, 2.3 dB at 2 GHz
- Low Current, 16 mA
- Broadband matched

## Product Overview

LEE2-6+ (RoHS compliant) is wideband current driven amplifier fabricated using HBT technology. In addition, the LEE2-6+, has good input and output return loss over a broad frequency range without the need for external matching components. Lead finish is Tin Silver over Nickel. It has repeatable performance from lot to lot and is enclosed in a 2mm x 2mm x 0.89mm 6-lead MCLP package for very good electrical performance.

## Key Features

Feature	Advantages
Broadband, DC* to 7 GHz (* Low frequency cut off determined by external coupling capacitors)	A single amplifier covering DC* to C band. <ul style="list-style-type: none"><li>• Reduced component inventory</li><li>• Ideal for wideband applications such as instrumentation and military</li></ul>
Low Noise Figure: 2.3 dB at 2 GHz	Low noise figure and low current (16mA) is ideal for use as an LNA in receivers
High Gain, 18.9 dB at 2 GHz	Minimizes the effect of NF of succeeding stages.
MCLP Package	Low inductance, repeatable transitions, excellent thermal pad.



Surface Mount

# Monolithic Amplifier

LEE2-6+

50Ω DC to 7 GHz

## Product Features

- Wideband, DC-7 GHz
- Internally Matched to 50 Ohms
- Noise figure, 2.3 dB at 2 GHz
- Low current, 16 mA

## Typical Applications

- Cellular
- PCN instrumentation
- VHF/UHF receivers/transmitters



Generic photo used for illustration purposes only

CASE STYLE: MC1630-1

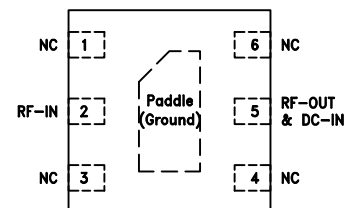
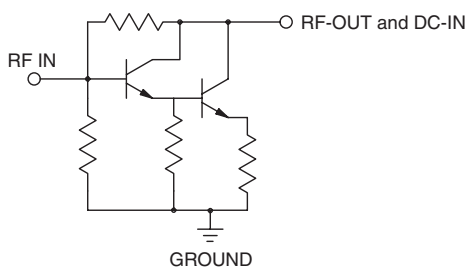
### +RoHS Compliant

The +Suffix identifies RoHS Compliance. See our web site for RoHS Compliance methodologies and qualifications

## General Description

LEE2-6+ (RoHS compliant) is wideband current driven amplifier fabricated using HBT technology. In addition, the LEE2-6+, has good input and output return loss over a broad frequency range without the need for external matching components. Lead finish is Tin Silver over Nickel. It has repeatable performance from lot to lot and is enclosed in a 2mm x 2mm x 0.89mm 6-lead MCLP package for very good electrical performance.

## simplified schematic and pin description



Function	Pin Number	Description
RF IN	2	RF input pin. This pin requires the use of an external DC blocking capacitor chosen for the frequency of operation.
RF-OUT and DC-IN	5	RF output and bias pin. DC voltage is present on this pin; therefore a DC blocking capacitor is necessary for proper operation. An RF choke is needed to feed DC bias without loss of RF signal due to the bias connection, as shown in "Recommended Application Circuit".
GND	Paddle	Connections to ground.
NC	1,3,4,6	No connection. Use via holes as shown in "Suggested Layout for PCB Design" to reduce ground path inductance for best performance.



**Electrical Specifications<sup>1</sup> at 25°C and 16mA, unless noted**

Parameter	Condition (GHz)	Min.	Typ.	Max.	Units
Frequency Range		DC <sup>2</sup>		7.0	GHz
Gain	0.01	—	21.5	—	dB
	1.0	—	20.6	—	
	2.0	17.1	18.9	21.1	
	4.0	—	15.3	—	
	6.0	—	12.2	—	
	7.0	—	10.8	—	
Isolation	2.0		22.5		dB
Input return loss	0.01		29.9		dB
	1.0		21.3		
	2.0		16.0		
	4.0		11.7		
	6.0		9.3		
	7.0		8.4		
Output return loss	0.01		36.6		dB
	1.0		17.0		
	2.0		13.4		
	4.0		11.6		
	6.0		11.0		
	7.0		10.4		
Output IP3	0.01		18.9		dBm
	1.0		16.5		
	2.0		17.6		
	4.0		17.8		
	6.0		15.3		
	7.0		14.5		
Output power @ 1dB compression	0.01		4.3		dBm
	1.0		2.9		
	2.0		2.8		
	4.0		3.1		
	6.0		2.2		
	7.0		1.2		
Noise figure	0.01		2.4		dB
	1.0		2.2		
	2.0		2.3		
	4.0		2.5		
	6.0		2.9		
	7.0		3.1		
Device Operating Current (I <sub>bias</sub> )			16		mA
Device Voltage (V <sub>b</sub> )			3.6		V
Device Voltage Variation vs Temperature at 16mA			-3		mV/°C
Device Voltage Variation vs Current at 25°C			10.6		mV/mA
Thermal Resistance, Junction-to-case <sup>3</sup>			95		°C/W

1. Measured on Mini-Circuits Characterization test board TB-621+. See characterization test circuit. (Fig. 1)

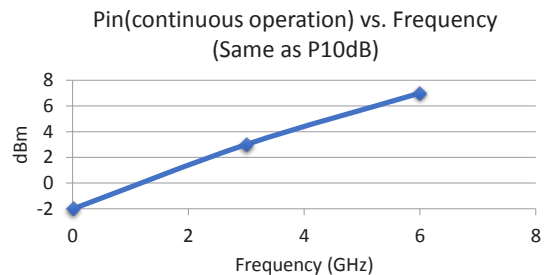
2. Low frequency cut-off determined by external coupling capacitor.

**Absolute Maximum Ratings<sup>4</sup>**

Parameter	Ratings
Operating temperature	-40°C to 85°C
Storage temperature	-65°C to 150°C
Operating current	50 mA
Power dissipation	200 mW
Input power (5 minutes max.)	29 dBm
Input power (continuous operation)	See Fig. 3

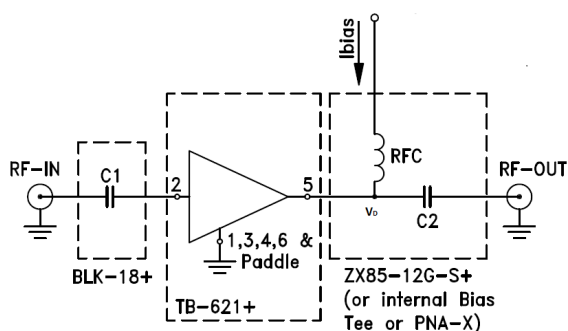
3. Case is defined as ground lead.

4. Permanent damage may occur if any of these limits are exceeded. These ratings are not intended for continuous normal operation.



**Fig 3. Power Input vs. Frequency**

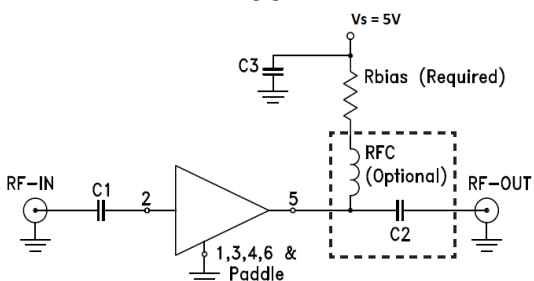
### Characterization Test Circuit



**Fig 1.** Block Diagram of Test Circuit used for characterization. (DUT soldered on Mini-Circuits Test Board TB-621+. Gain, Return Loss, Output Power at 1 dB Compression (P1 dB), Output IP3 (OIP3) and Noise Figure measured using key signal N5242A, PNA-X microwave network analyzer. Conditions:

1. I<sub>bias</sub>=16mA
2. Gain and Return loss: -25dBm
3. Output IP3: Two tones, spaced 1 MHz apart, -8 dBm/tone at output.

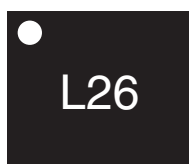
### Recommended Application Circuit



Component	Value	Size	Part Number	Manufacturer
C1, C2	2400 pF	0805	—	Various
RF C	—	0.15"X0.15"	TCCH-80+	Mini-Circuits
Rbias	93.1Ω	0402	—	Various
C3	0.1μF	0805	—	Various

**Fig 2.** Evaluation Board TB-899+ includes case, connectors and components soldered to PCB.

### Product Marking



Marking may contain other features or characters for internal lot control

<b>Additional Detailed Technical Information</b>	
<i>additional information is available on our dash board. To access this information <a href="#">click here</a></i>	
<b>Performance Data</b>	Data Table
	Swept Graphs
	S-Parameter (S2P Files) Data Set (.zip file)
<b>Case Style</b>	MC1630-1, <i>Plastic package, lead finish: tin-silver over nickel</i>
<b>Tape &amp; Reel</b>	F66 <i>7" Reels with 20, 50, 100, 200, 500, 1K, or 2K devices</i>
<b>Suggested Layout for PCB Design</b>	PL-349
<b>Evaluation Board</b>	TB-899+
<b>Environmental Ratings</b>	ENV08T1

**ESD Rating**

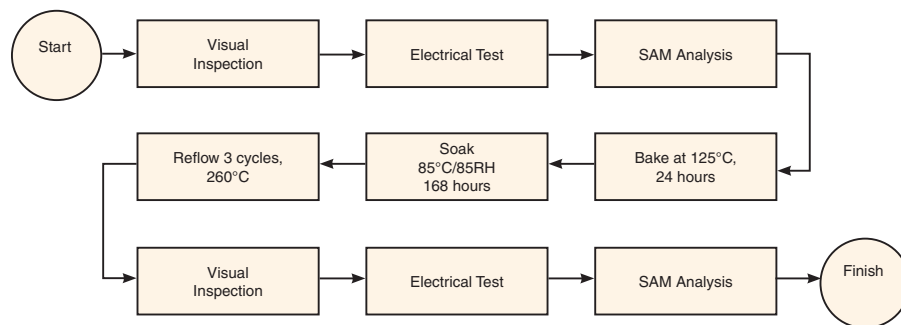
Human Body Model (HBM): Class 1C (1000 to <2000V) in accordance with ANSI/ESD STM 5.1 - 2001

Machine Model (MM): Class M2 (100V) in accordance with ANSI/ESD STM5.2-1999

**MSL Rating**

Moisture Sensitivity: MSL1 in accordance with IPC/JEDEC J-STD-020D

**MSL Test Flow Chart**



## X-ON Electronics

Largest Supplier of Electrical and Electronic Components

*Click to view similar products for [RF Amplifier](#) category:*

*Click to view products by [Mini-Circuits](#) manufacturer:*

Other Similar products are found below :

[A82-1](#) [BGA622H6820XTSA1](#) [BGA 728L7 E6327](#) [BGB719N7ESDE6327XTMA1](#) [HMC397-SX](#) [HMC405](#) [HMC561-SX](#) [HMC8120-SX](#)  
[HMC8121-SX](#) [HMC-ALH382-SX](#) [HMC-ALH476-SX](#) [SE2433T-R](#) [SMA3101-TL-E](#) [SMA39](#) [A66-1](#) [A66-3](#) [A67-1](#) [LX5535LQ](#) [LX5540LL](#)  
[MAAM02350](#) [HMC3653LP3BETR](#) [HMC549MS8GETR](#) [HMC-ALH435-SX](#) [SMA101](#) [SMA32](#) [SMA411](#) [SMA531](#) [SST12LP17E-XX8E](#)  
[SST12LP19E-QX6E](#) [WPM0510A](#) [HMC5929LS6TR](#) [HMC5879LS7TR](#) [HMC1126](#) [HMC1087F10](#) [HMC1086](#) [HMC1016](#) [SMA1212](#)  
[MAX2689EWS+T](#) [MACS-007802-0M1RS0](#) [MAAMSS0041TR](#) [MAAM37000-A1G](#) [CHA5115-QDG](#) [SMA70-2](#) [SMA4011](#) [A231](#) [HMC-](#)  
[AUH232](#) [LX5511LQ](#) [LX5511LQ-TR](#) [HMC7441-SX](#) [HMC-ALH310](#)