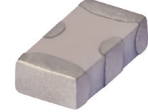


Ceramic Low Pass Filter

50Ω DC to 630 MHz

LFCN-630D+



Generic photo used for illustration purposes only
CASE STYLE: FV1206

Maximum Ratings

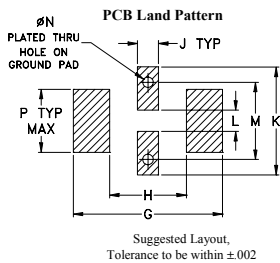
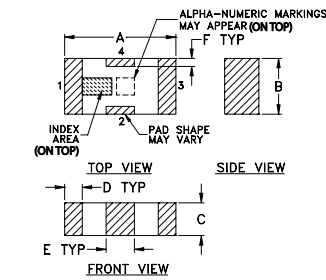
| | |
|-----------------------------|-------------------|
| Operating Temperature | -55°C to 100°C |
| Storage Temperature | -55°C to 100°C |
| RF Power Input* | 8.5W max. at 25°C |
| Max. DC Voltage at pins 1&3 | 25 VDC |
| DC Current Input to Output | 0.5A max. at 25°C |

* Derate linearly to 3.5W at 100°C ambient.
Permanent damage may occur if any of these limits are exceeded.

Pin Connections

| | |
|--------|-----|
| RF IN | 1 |
| RF OUT | 3 |
| GROUND | 2,4 |

Outline Drawing



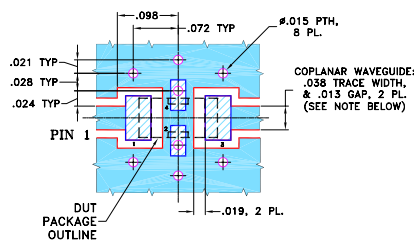
Suggested Layout,
Tolerance to be within ±.002

Outline Dimensions (inch)

| A | B | C | D | E | F | G |
|------|------|------|------|------|------|------|
| .126 | .063 | .037 | .020 | .032 | .009 | .169 |
| 3.20 | 1.60 | 0.94 | 0.51 | 0.81 | 0.23 | 4.29 |

| H | J | K | L | M | N | P | wt |
|------|------|------|------|------|------|------|-------|
| .087 | .024 | .122 | .024 | .087 | .012 | .071 | grams |
| 2.21 | 0.61 | 3.10 | 0.61 | 2.21 | 0.30 | 1.80 | .020 |

Demo Board MCL P/N: TB-270 Suggested PCB Layout (PL-137)



- NOTES:**
1. COPLANAR WAVEGUIDE PARAMETERS ARE SHOWN FOR ROGERS RO4350B WITH THICKNESS .020" ± .0015". COPPER: 1/2 OZ. EACH SIDE. FOR OTHER MATERIALS TRACE WIDTH & GAP MAY NEED TO BE MODIFIED.
 2. BOTTOM SIDE OF THE PCB IS CONTINUOUS GROUND PLANE.
- DENOTES PCB COPPER LAYOUT WITH SMOBC (SOLDER MASK OVER BARE COPPER)
 - DENOTES COPPER LAND PATTERN FREE OF SOLDER MASK

Features

- excellent power handling, 8.5W
- small size
- 7 sections
- temperature stable
- LTCC construction
- protected by U.S. Patent 6,943,646

Applications

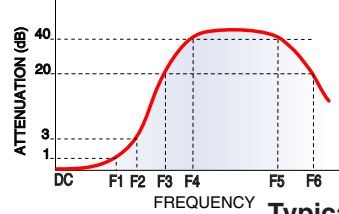
- harmonic rejection
- VHF/UHF transmitters/receivers

Electrical Specifications^{1,2} at 25°C

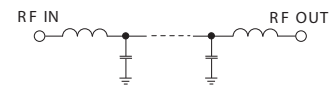
| Parameter | F# | Frequency (MHz) | Min. | Typ. | Max. | Unit | |
|-----------|----------------|-----------------|-----------|------|------|------|----|
| Pass Band | Insertion Loss | DC-F1 | DC-630 | — | — | 1.0 | dB |
| | Freq. Cut-Off | F2 | 830 | — | 3.0 | — | dB |
| | VSWR | DC-F1 | DC-630 | — | 1.2 | — | :1 |
| Stop Band | Rejection Loss | F3 | 1020 | 20 | — | — | dB |
| | | F4-F5 | 1050-3500 | — | 40 | — | dB |
| | VSWR | F6 | 6000 | — | 20 | — | dB |
| | | F3-F6 | 1020-6000 | — | 20 | — | :1 |

- (1) DC Resistance to ground is 100 Mohms min.
(2) Measured on Mini-Circuits Characterization Test Board TB-270.

Typical Frequency Response

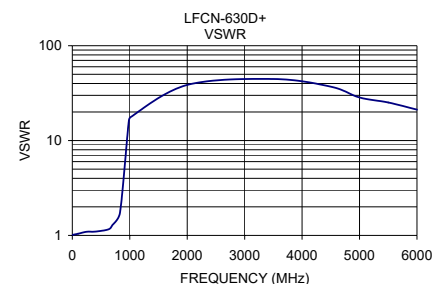
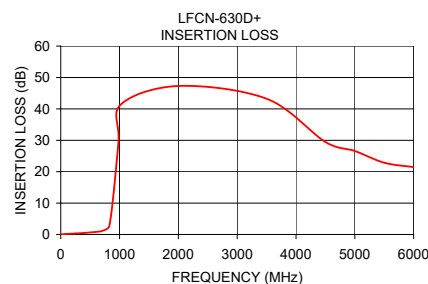


Electrical Schematic



Typical Performance Data at 25°C

| Frequency (MHz) | Insertion Loss (dB) | VSWR (:1) |
|-----------------|---------------------|-----------|
| 1.00 | 0.05 | 1.01 |
| 100.00 | 0.18 | 1.04 |
| 250.00 | 0.33 | 1.09 |
| 400.00 | 0.48 | 1.10 |
| 630.00 | 0.88 | 1.16 |
| 700.00 | 1.16 | 1.29 |
| 830.00 | 2.99 | 1.73 |
| 980.00 | 29.14 | 15.39 |
| 1020.00 | 41.38 | 17.75 |
| 2000.00 | 47.29 | 38.61 |
| 3500.00 | 43.24 | 44.55 |
| 4500.00 | 29.47 | 36.97 |
| 5000.00 | 26.58 | 28.49 |
| 5500.00 | 22.87 | 25.19 |
| 6000.00 | 21.45 | 21.20 |



Notes

- A. Performance and quality attributes and conditions not expressly stated in this specification document are intended to be excluded and do not form a part of this specification document.
B. Electrical specifications and performance data contained in this specification document are based on Mini-Circuits' applicable established test performance criteria and measurement instructions.
C. The parts covered by this specification document are subject to Mini-Circuits standard limited warranty and terms and conditions (collectively, "Standard Terms"); Purchasers of this part are entitled to the rights and benefits contained therein. For a full statement of the Standard Terms and the exclusive rights and remedies thereunder, please visit Mini-Circuits' website at www.minicircuits.com/MCLStore/terms.jsp



X-ON Electronics

Largest Supplier of Electrical and Electronic Components

Click to view similar products for [Signal Conditioning](#) category:

Click to view products by [Mini-Circuits](#) manufacturer:

Other Similar products are found below :

[MAPDCC0001](#) [MAPDCC0004](#) [PD0409J5050S2HF](#) [880157](#) [HHS-109-PIN](#) [DC1417J5005AHF](#) [AFS14A30-2185.00-T3](#) [AFS14A35-1591.50-T3](#) [DS-323-PIN](#) [B39321R801H210](#) [1A0220-3](#) [JP510S](#) [LFB212G45SG8C341](#) [LFB322G45SN1A504](#) [LFL182G45TC3B746](#) [SF2159E](#) [30057](#)
[FM-104-PIN](#) [CER0813B](#) [MAPDCC0005](#) [3A325](#) [40287](#) [41180](#) [ATB3225-75032NCT](#) [BD0810N50100AHF](#) [BD2425J50200AHF](#)
[C5060J5003AHF](#) [JHS-115-PIN](#) [JP503AS](#) [DC0710J5005AHF](#) [DC2327J5005AHF](#) [DC3338J5005AHF](#) [43020](#) [LFB2H2G60BB1C106](#)
[LFL15869MTC1B787](#) [X3C19F1-20S](#) [XC3500P-20S](#) [10013-20](#) [SF2194E](#) [CDBLB455KCAX39-B0](#) [TGL2208-SM, EVAL](#) [RF1353C](#)
[PD0922J5050D2HF](#) [1E1305-3](#) [1G1304-30](#) [B0922J7575AHF](#) [2020-6622-20](#) [TP-102-PIN](#) [TP-103-PIN](#) [BD1222J50200AHF](#)