

Surface Mount Low Pass Filter

SCLF-225+

50Ω DC to 225 MHz

Maximum Ratings

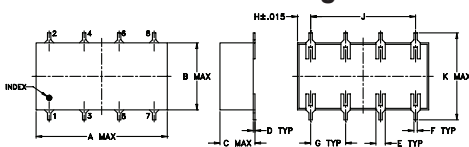
Operating Temperature	-40°C to 85°C
Storage Temperature	-55°C to 100°C
Power Input	0.5W max.

Permanent damage may occur if any of these limits are exceeded.

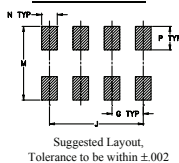
Pin Connections

INPUT	1
OUTPUT	8
GROUND	2,3,4,5,6,7

Outline Drawing



PCB Land Pattern

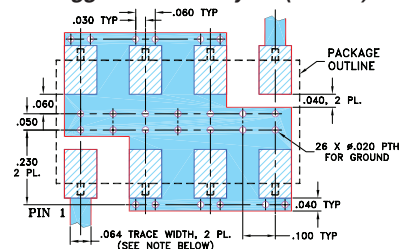


Outline Dimensions (inch)

A	B	C	D	E	F	G
0.75	0.38	0.28	0.01	0.05	0.02	0.2
19.05	9.65	7.11	0.25	1.27	0.51	5.08

H	J	K	M	N	P	wt
0.075	0.6	0.45	0.47	0.1	0.15	grams
1.91	15.24	11.43	11.94	2.54	3.81	1.60

Demo Board MCL P/N: TB-187+ Suggested PCB Layout (PL-049)



- NOTES: 1. TRACE WIDTH IS SHOWN FOR ROGERS RO4350B WITH DIELECTRIC THICKNESS .030" ± .002"; COPPER: 1/2 OZ. EACH SIDE. FOR OTHER MATERIALS TRACE WIDTH MAY NEED TO BE MODIFIED.
2. BOTTOM SIDE OF THE PCB IS CONTINUOUS GROUND PLANE.
- DENOTES PCB COPPER LAYOUT WITH SMOBC (SOLDER MASK OVER BARE COPPER)
 - DENOTES COPPER LAND PATTERN FREE OF SOLDER MASK

Features

- wide selection of cut-off frequencies
- excellent rejection
- custom models available

Applications

- defense communications
- receivers/transmitters
- harmonic rejection of VCOs



Generic photo used for illustration purposes only
CASE STYLE: YY161

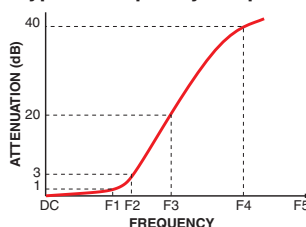
+RoHS Compliant

The +Suffix identifies RoHS Compliance. See our web site for RoHS Compliance methodologies and qualifications

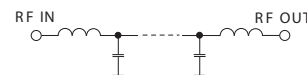
Electrical Specifications

Parameter	F#	Frequency (MHz)	Min.	Typ.	Max.	Unit	
Pass Band	Insertion Loss	DC-F1	DC-225	—	—	1.0	dB
	Freq. Cut-Off	F2	250	—	3.0	—	dB
	VSWR	DC-F1	DC-225	—	1.7	—	:1
Stop Band	Rejection Loss	F3-F4	340-440	20	—	—	dB
		F4-F5	440-1200	40	—	—	dB
	VSWR	F3-F5	340-1200	—	18	—	:1

Typical Frequency Response

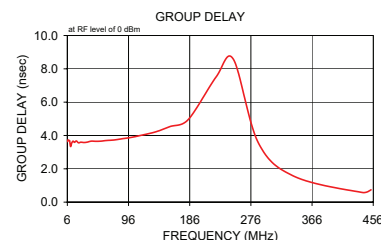
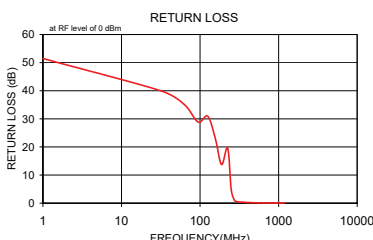


Electrical Schematic



Typical Performance Data

Frequency (MHz)	Insertion Loss (dB)		Return Loss (dB)	Frequency (MHz)	Group Delay (nsec)
	\bar{x}	σ			
1.00	0.02	0.00	51.46	6.00	3.63
32.10	0.09	0.00	39.91	6.94	3.72
63.30	0.13	0.00	35.05	8.02	3.69
94.40	0.18	0.01	28.86	9.28	3.69
125.50	0.24	0.01	30.90	10.73	3.34
156.60	0.34	0.01	22.98	12.40	3.54
187.80	0.63	0.03	13.73	14.34	3.66
225.00	0.85	0.05	19.61	16.58	3.59
250.00	4.47	0.90	4.58	19.17	3.67
275.00	13.44	1.06	0.95	22.40	3.56
288.00	18.01	1.02	0.63	25.90	3.60
301.00	22.28	0.98	0.49	30.25	3.58
314.00	26.30	0.97	0.42	34.98	3.60
327.00	30.03	0.97	0.37	40.86	3.66
340.00	33.46	0.98	0.34	47.25	3.65
353.00	36.62	1.01	0.31	55.20	3.66
370.40	40.58	1.05	0.27	63.82	3.70
387.80	44.45	1.13	0.24	74.56	3.73
405.20	48.13	1.21	0.22	86.20	3.80
422.60	51.39	1.27	0.21	100.71	3.89
440.00	54.18	1.31	0.19	113.44	4.00
457.00	56.71	1.41	0.17	136.03	4.22
549.90	64.60	1.52	0.12	157.28	4.54
642.80	65.09	1.93	0.08	183.74	4.95
735.60	62.97	1.53	0.05	225.00	7.52
828.50	61.45	1.33	0.03	250.00	8.59



Notes

- A. Performance and quality attributes and conditions not expressly stated in this specification document are intended to be excluded and do not form a part of this specification document.
B. Electrical specifications and performance data contained in this specification document are based on Mini-Circuit's applicable established test performance criteria and measurement instructions.
C. The parts covered by this specification document are subject to Mini-Circuit's standard limited warranty and terms and conditions (collectively, "Standard Terms"); Purchasers of this part are entitled to the rights and benefits contained therein. For a full statement of the Standard Terms and the exclusive rights and remedies thereunder, please visit Mini-Circuit's website at www.minicircuits.com/MCLStore/terms.jsp



www.minicircuits.com P.O. Box 350166, Brooklyn, NY 11235-0003 (718) 934-4500 sales@minicircuits.com

REV. F
M158359
SCLF-225+
170313

X-ON Electronics

Largest Supplier of Electrical and Electronic Components

Click to view similar products for [Signal Conditioning](#) category:

Click to view products by [Mini-Circuits](#) manufacturer:

Other Similar products are found below :

[MAPDCC0001](#) [MAPDCC0004](#) [PD0409J5050S2HF](#) [880157](#) [HHS-109-PIN](#) [DC1417J5005AHF](#) [AFS14A30-2185.00-T3](#) [AFS14A35-1591.50-T3](#) [DS-323-PIN](#) [B39321R801H210](#) [1A0220-3](#) [JP510S](#) [LFB212G45SG8C341](#) [LFB322G45SN1A504](#) [LFL182G45TC3B746](#) [SF2159E](#) [30057](#)
[FM-104-PIN](#) [CER0813B](#) [MAPDCC0005](#) [3A325](#) [40287](#) [41180](#) [ATB3225-75032NCT](#) [BD0810N50100AHF](#) [BD2425J50200AHF](#)
[C5060J5003AHF](#) [JHS-115-PIN](#) [JP503AS](#) [DC0710J5005AHF](#) [DC2327J5005AHF](#) [DC3338J5005AHF](#) [43020](#) [LFB2H2G60BB1C106](#)
[LFL15869MTC1B787](#) [X3C19F1-20S](#) [XC3500P-20S](#) [10013-20](#) [SF2194E](#) [CDBLB455KCAX39-B0](#) [TGL2208-SM, EVAL](#) [RF1353C](#)
[PD0922J5050D2HF](#) [1E1305-3](#) [1G1304-30](#) [B0922J7575AHF](#) [2020-6622-20](#) [TP-102-PIN](#) [TP-103-PIN](#) [BD1222J50200AHF](#)