

Ultra-Small Ceramic Power Splitter/Combiner

SCN-3-13+ SCN-3-13

3 Way-0° 50Ω 750 to 1325 MHz



Generic photo used for illustration purposes only
CASE STYLE: FV1206-1

Maximum Ratings

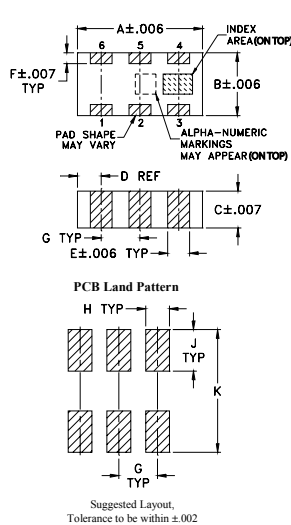
Operating Temperature	-55°C to 100°C
Storage Temperature	-55°C to 100°C
Power Input (as a splitter)	15W* max.

* Derate linearly to 6W at 100°C ambient.
Permanent damage may occur if any of these limits are exceeded.

Pin Connections

SUM PORT	2
PORT 1	6
PORT 2	5
PORT 3	4
GROUND	1,3
PORT 1-2, 2-3	resistor external 124 ohms
PORT 1-3	resistor external 127 ohms

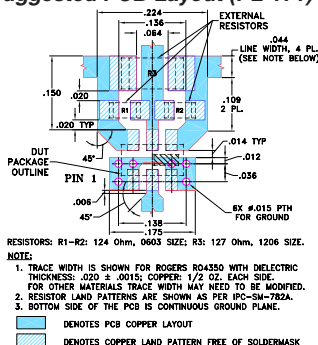
Outline Drawing



Outline Dimensions (inch/mm)

A	B	C	D	E	F
.126	.063	.035	.024	.022	.011
3.20	1.60	0.89	0.61	0.56	0.28
G	H	J	K	wt	
.039	.024	.042	.123	grams	
0.99	0.61	1.07	3.12	.020	

Demo Board MCL P/N: TB-303 Suggested PCB Layout (PL-171)



Notes

- Performance and quality attributes and conditions not expressly stated in this specification document are intended to be excluded and do not form a part of this specification document.
- Electrical specifications and performance data contained in this specification document are based on Mini-Circuit's applicable established test performance criteria and measurement instructions.
- The parts covered by this specification document are subject to Mini-Circuit's standard limited warranty and terms and conditions (collectively, "Standard Terms"); Purchasers of this part are entitled to the rights and benefits contained therein. For a full statement of the Standard Terms and the exclusive rights and remedies thereunder, please visit Mini-Circuit's website at www.minicircuits.com/WCLStore/terms.jsp

Features

- isolation resistors, external
- low insertion loss, 1.0 dB typ.
- excellent amplitude unbalance, 0.3 dB typ.
- very good phase unbalance, 1 deg. typ.
- high isolation, 12 dB typ.
- excellent power handling, 15W as splitter
- small size, 0.12"X0.06"X0.035"
- ESD non-sensitive
- temperature stable LTCC technology
- wrap around, terminations for excellent solderability
- low cost

Applications

- DSS
- WLAN
- satellite communication
- GSM, GPS
- ISM applications
- defense applications

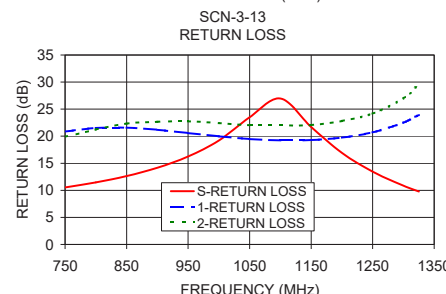
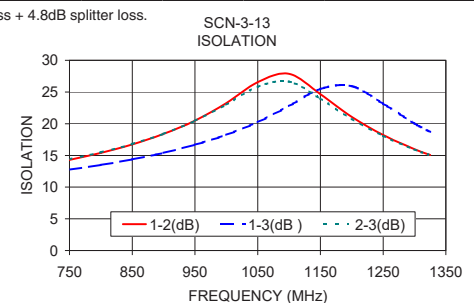
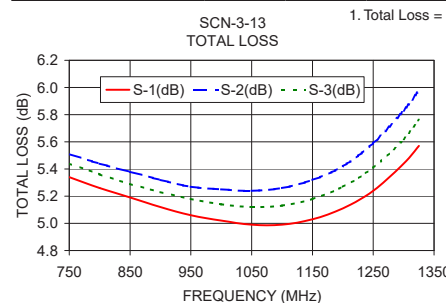
Electrical Specifications

FREQ. RANGE (MHz)	ISOLATION (dB)		INSERTION LOSS (dB) ABOVE 4.8 dB		PHASE UNBALANCE (Degrees)		AMPLITUDE UNBALANCE (dB)		RETURN LOSS (dB)	
	Typ.	Min.	Typ.	Max.	Typ.	Max.	Typ.	Max.	INPUT Typ.	OUTPUT Typ.
$f_c - f_u$										
750-1325	12	10	1.0	1.5	1.0	3.0	0.3	0.7	12	20
850-1000	16	12	0.4	0.8	0.5	3.0	0.2	0.5	15	20

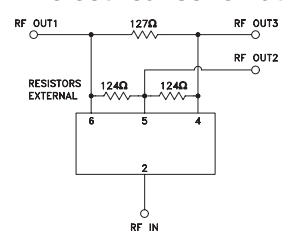
Typical Performance Data

Freq. (MHz)	Total Loss ¹ (dB)			Amp. Unbal. (dB)	Isolation (dB)			Phase Unbal. (deg.)	Return Loss (dB)		
	S-1	S-2	S-3		1-2	1-3	2-3		S	1	2
750.00	5.34	5.51	5.44	0.17	14.30	12.76	14.40	0.91	10.53	20.85	19.89
800.00	5.26	5.44	5.36	0.17	15.41	13.51	15.51	1.02	11.47	21.53	21.25
850.00	5.19	5.38	5.29	0.19	16.74	14.37	16.81	1.07	12.65	21.58	22.33
900.00	5.12	5.32	5.23	0.20	18.39	15.41	18.41	1.20	14.17	21.18	22.67
950.00	5.06	5.27	5.18	0.22	20.49	16.67	20.45	1.30	16.24	20.59	22.75
1000.00	5.02	5.25	5.14	0.23	23.24	18.24	23.00	1.39	19.19	19.97	22.41
1050.00	4.99	5.24	5.12	0.25	26.57	20.24	25.81	1.45	23.51	19.48	22.03
1100.00	4.99	5.26	5.13	0.27	27.86	22.80	26.64	1.54	26.97	19.24	22.00
1150.00	5.03	5.32	5.18	0.29	24.65	25.48	23.98	1.61	21.70	19.28	22.07
1200.00	5.11	5.42	5.27	0.32	21.07	25.93	20.77	1.64	16.90	19.74	22.80
1250.00	5.24	5.59	5.41	0.35	18.22	23.16	18.08	1.73	13.45	20.72	24.18
1300.00	5.44	5.83	5.62	0.39	16.00	20.05	15.93	1.79	10.86	22.51	27.00
1325.00	5.57	5.98	5.76	0.41	15.07	18.71	15.03	1.81	9.77	23.94	29.65

1. Total Loss = Insertion Loss + 4.8dB splitter loss.



electrical schematic



www.minicircuits.com P.O. Box 350166, Brooklyn, NY 11235-0003 (718) 934-4500 sales@minicircuits.com

REV. E
M151107
ED-11736/2
SCN-3-13
AD/DJ/CP/AM
150928
Page 1 of 1

X-ON Electronics

Largest Supplier of Electrical and Electronic Components

Click to view similar products for [Signal Conditioning](#) category:

Click to view products by [Mini-Circuits](#) manufacturer:

Other Similar products are found below :

[MAPDCC0001](#) [MAPDCC0004](#) [PD0409J5050S2HF](#) [880157](#) [HHS-109-PIN](#) [DC1417J5005AHF](#) [AFS14A30-2185.00-T3](#) [AFS14A35-1591.50-T3](#) [DS-323-PIN](#) [B39321R801H210](#) [1A0220-3](#) [JP510S](#) [LFB212G45SG8C341](#) [LFB322G45SN1A504](#) [LFL182G45TC3B746](#) [SF2159E](#) [30057](#)
[FM-104-PIN](#) [CER0813B](#) [MAPDCC0005](#) [3A325](#) [40287](#) [41180](#) [ATB3225-75032NCT](#) [BD0810N50100AHF](#) [BD2425J50200AHF](#)
[C5060J5003AHF](#) [JHS-115-PIN](#) [JP503AS](#) [DC0710J5005AHF](#) [DC2327J5005AHF](#) [DC3338J5005AHF](#) [43020](#) [LFB2H2G60BB1C106](#)
[LFL15869MTC1B787](#) [X3C19F1-20S](#) [XC3500P-20S](#) [10013-20](#) [SF2194E](#) [CDBLB455KCAX39-B0](#) [TGL2208-SM, EVAL](#) [RF1353C](#)
[PD0922J5050D2HF](#) [1E1305-3](#) [1G1304-30](#) [B0922J7575AHF](#) [2020-6622-20](#) [TP-102-PIN](#) [TP-103-PIN](#) [BD1222J50200AHF](#)