

top hat[®]
Surface Mount
Power Splitter/Combiner

TCP-2-33W+

2 Way-0° 50Ω 50 to 3000 MHz

Features

- wide frequency band, 50 to 3000 MHz
- low insertion, 1.0 dB typ.
- external resistor required
- aqueous washable
- leads for excellent solderability
- low cost

Applications

- cellular
- PCN
- GPS



Generic photo used for illustration purposes only

CASE STYLE: DB1627

+RoHS Compliant

The +Suffix identifies RoHS Compliance. See our web site for RoHS Compliance methodologies and qualifications

Available Tape and Reel at no extra cost	
Reel Size	Devices/Reel
7"	20, 50, 100, 200, 500
13"	1000, 2000

Electrical Specifications at 25°C

Parameter	Frequency (MHz)	Min.	Typ.	Max.	Unit
Frequency Range		50		3000	MHz
Insertion Loss Above 3.0 dB	50-500	—	0.6	0.9	dB
	500-1500	—	0.9	1.3	
Isolation	1500-3000	—	1.3	2.1	dB
	50-500	20	30	—	
	500-1500	16	21	—	
Phase Unbalance	1500-3000	8	11	—	Degree
	50-500	—	0.7	2	
	500-1500	—	1.6	5	
Amplitude Unbalance	1500-3000	—	6.5	10	dB
	50-500	—	0.06	0.2	
	500-1500	—	0.4	0.6	
VSWR (Port-S)	1500-3000	—	0.8	1.3	:1
	50-500	—	1.9	2.2	
	500-1500	—	1.9	2.2	
VSWR (Port 1-2)	1500-3000	—	1.8	2.1	:1
	50-500	—	1.9	2.2	
	500-1500	—	2.2	2.5	
	1500-3000	—	2.6	2.9	

Maximum Ratings

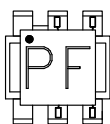
Parameter	Ratings
Operating Temperature	-40°C to 85°C
Storage Temperature	-55°C to 100°C
Power Input (as a splitter)	0.5W max.

Permanent damage may occur if any of these limits are exceeded.

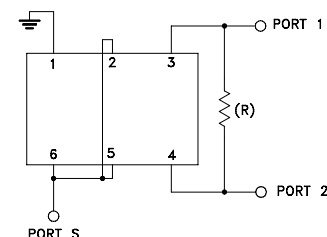
Pin Connections

Function	Pin Number
SUM PORT	2,5,6
PORT 1	3
PORT 2	4
GROUND	1
EXT. RESISTOR 475Ω	3,4

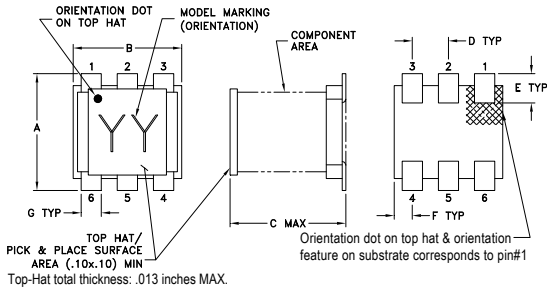
Product Marking



Electrical Schematic



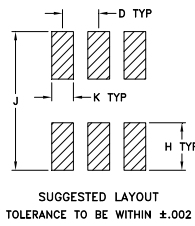
Outline Drawing



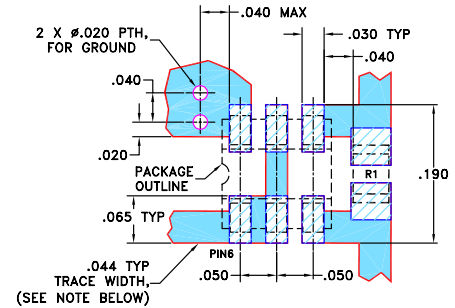
Outline Dimensions (inch/mm)

A	B	C	D	E	F
.160	.150	.160	.050	.040	.025
4.06	3.81	4.06	1.27	1.02	0.64
G	H	J	K	wt	
.028	.065	.190	.030	grams	
0.71	1.65	4.83	0.76	0.15	

PCB Land Pattern



Demo Board MCL P/N: TB-86+ Suggested PCB Layout (PL-008)

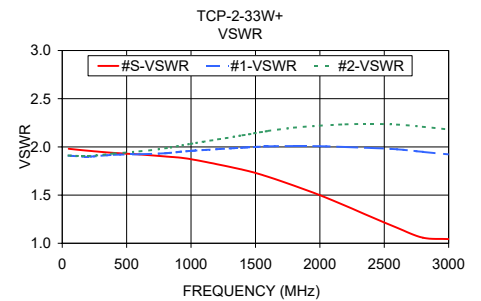
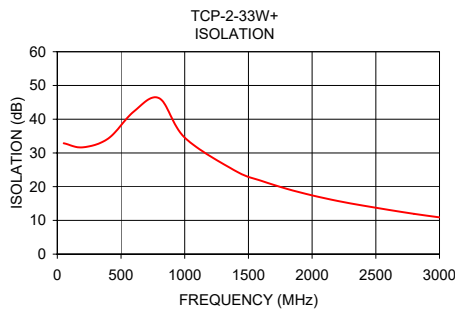
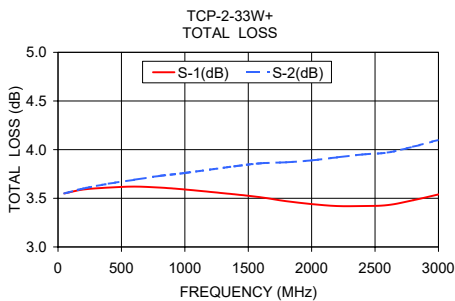


- RESISTOR R1: 475 \pm 1% Ohm, 0805 SIZE
- NOTES: 1. TRACE WIDTH IS SHOWN FOR ROGERS RO4350B WITH DIELECTRIC THICKNESS 0.020" \pm 0.0015"; COPPER: 1/2 OZ. EACH SIDE. FOR OTHER MATERIALS TRACE WIDTH MAY NEED TO BE MODIFIED.
2. BOTTOM SIDE OF THE PCB IS CONTINUOUS GROUND PLANE.
- DENOTES PCB COPPER LAYOUT WITH SMOBC (SOLDER MASK OVER BARE COPPER)
 - DENOTES COPPER LAND PATTERN FREE OF SOLDER MASK

Typical Performance Data

Frequency (MHz)	Total Loss ¹ (dB)		Amplitude Unbalance (dB)	Isolation (dB)	Phase Unbalance (deg.)	VSWR S	VSWR 1	VSWR 2
	S-1	S-2						
50.00	3.55	3.55	0.00	32.87	0.06	1.98	1.91	1.91
200.00	3.59	3.60	0.01	31.65	0.23	1.96	1.90	1.90
400.00	3.61	3.65	0.03	34.27	0.44	1.94	1.92	1.93
600.00	3.62	3.69	0.07	42.24	0.63	1.92	1.92	1.95
800.00	3.61	3.73	0.12	46.22	0.82	1.90	1.93	1.99
1000.00	3.59	3.76	0.17	34.55	0.96	1.87	1.96	2.03
1400.00	3.54	3.83	0.29	24.63	1.24	1.76	1.99	2.12
1600.00	3.51	3.86	0.35	21.75	1.38	1.69	2.01	2.17
1800.00	3.47	3.87	0.40	19.39	1.56	1.60	2.01	2.20
2000.00	3.44	3.89	0.45	17.42	1.84	1.50	2.01	2.22
2200.00	3.42	3.92	0.50	15.78	2.21	1.39	2.00	2.23
2400.00	3.42	3.95	0.53	14.40	2.62	1.27	1.99	2.24
2600.00	3.43	3.97	0.54	13.12	3.15	1.16	1.97	2.23
2800.00	3.48	4.03	0.55	11.95	3.88	1.06	1.95	2.21
3000.00	3.54	4.10	0.56	10.91	4.84	1.04	1.92	2.18

1. Total Loss = Insertion Loss + 3dB splitter loss.



Additional Notes

- Performance and quality attributes and conditions not expressly stated in this specification document are intended to be excluded and do not form a part of this specification document.
- Electrical specifications and performance data contained in this specification document are based on Mini-Circuit's applicable established test performance criteria and measurement instructions.
- The parts covered by this specification document are subject to Mini-Circuits standard limited warranty and terms and conditions (collectively, "Standard Terms"); Purchasers of this part are entitled to the rights and benefits contained therein. For a full statement of the Standard Terms and the exclusive rights and remedies thereunder, please visit Mini-Circuits' website at www.minicircuits.com/MCLStore/terms.jsp

X-ON Electronics

Largest Supplier of Electrical and Electronic Components

Click to view similar products for [Signal Conditioning](#) category:

Click to view products by [Mini-Circuits](#) manufacturer:

Other Similar products are found below :

[MAPDCC0001](#) [MAPDCC0004](#) [PD0409J5050S2HF](#) [880157](#) [HHS-109-PIN](#) [DC1417J5005AHF](#) [AFS14A30-2185.00-T3](#) [AFS14A35-1591.50-T3](#) [DS-323-PIN](#) [B39321R801H210](#) [1A0220-3](#) [JP510S](#) [LFB212G45SG8C341](#) [LFB322G45SN1A504](#) [LFL182G45TC3B746](#) [SF2159E](#) [30057](#)
[FM-104-PIN](#) [CER0813B](#) [MAPDCC0005](#) [3A325](#) [40287](#) [41180](#) [ATB3225-75032NCT](#) [BD0810N50100AHF](#) [BD2425J50200AHF](#)
[C5060J5003AHF](#) [JHS-115-PIN](#) [JP503AS](#) [DC0710J5005AHF](#) [DC2327J5005AHF](#) [DC3338J5005AHF](#) [43020](#) [LFB2H2G60BB1C106](#)
[LFL15869MTC1B787](#) [X3C19F1-20S](#) [XC3500P-20S](#) [10013-20](#) [SF2194E](#) [CDBLB455KCAX39-B0](#) [TGL2208-SM, EVAL](#) [RF1353C](#)
[PD0922J5050D2HF](#) [1E1305-3](#) [1G1304-30](#) [B0922J7575AHF](#) [2020-6622-20](#) [TP-102-PIN](#) [TP-103-PIN](#) [BD1222J50200AHF](#)