

# High Pass Filter

## VHF-440+

50Ω 500 to 2500 MHz

### Maximum Ratings

|                       |                 |
|-----------------------|-----------------|
| Operating Temperature | -55°C to 100°C  |
| Storage Temperature   | -55°C to 100°C  |
| RF Power Input*       | 7W max. at 25°C |

\*Passband rating, derate linearly to 3W at 100°C ambient. Permanent damage may occur if any of these limits are exceeded.

### Features

- Rugged uni-body construction, small size
- 7 sections
- Temperature stable
- Excellent power handling, 7W
- Low cost

### Applications

- Military
- Sub-harmonic rejection and DC blocking
- Transmitters/Receivers
- Lab use



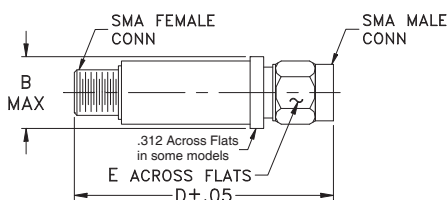
CASE STYLE: FF704

| Connectors | Model    |
|------------|----------|
| SMA        | VHF-440+ |

### +RoHS Compliant

The +Suffix identifies RoHS Compliance. See our web site for RoHS Compliance methodologies and qualifications

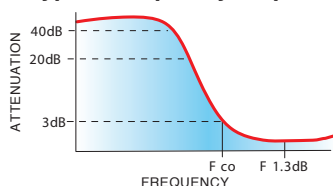
### Outline Drawing



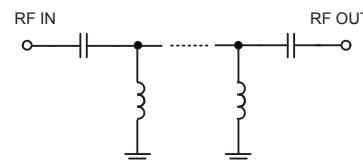
### High Pass Filter Electrical Specifications (T<sub>AMB</sub> = 25°C)

| STOPBAND (MHz)<br>Min. | f <sub>co</sub> , MHz<br>Nom. | PASSBAND (MHz) |             | VSWR<br>Typ. |            | NO. OF SECTIONS |
|------------------------|-------------------------------|----------------|-------------|--------------|------------|-----------------|
|                        |                               | (Loss<40dB)    | (Loss>20dB) | (Loss<1.3dB) | (Loss<2dB) |                 |
| 230                    | 350                           | 440            | 600-1700    | 500-2500     | 20:1       | 7               |

### typical frequency response



### electrical schematic

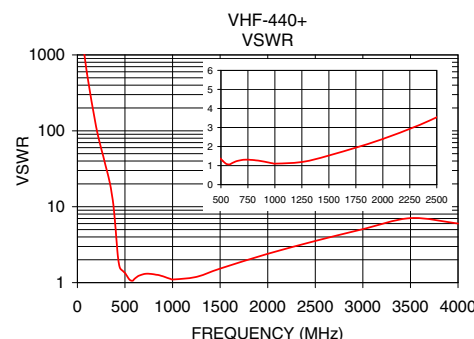
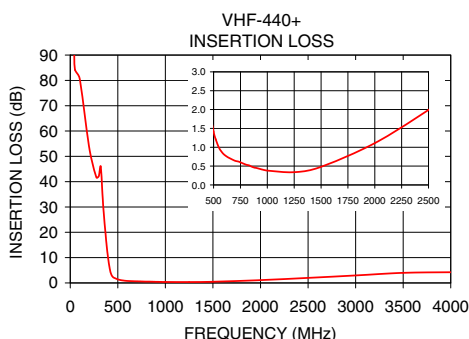


### Outline Dimensions (inch/mm)

| B     | D     | E    | wt.   |
|-------|-------|------|-------|
| .410  | 1.43  | .312 | grams |
| 10.41 | 36.32 | 7.92 | 10    |

### Typical Performance Data at 25°C

| Frequency (MHz) | Insertion Loss (dB) | VSWR (:1) |
|-----------------|---------------------|-----------|
| 50              | 84.17               | 1737.18   |
| 100             | 80.55               | 579.06    |
| 230             | 47.11               | 75.53     |
| 350             | 28.57               | 18.11     |
| 385             | 13.96               | 8.77      |
| 410             | 6.58                | 3.72      |
| 440             | 2.73                | 1.67      |
| 450             | 2.30                | 1.54      |
| 500             | 1.41                | 1.34      |
| 510             | 1.30                | 1.29      |
| 600             | 0.80                | 1.12      |
| 800             | 0.54                | 1.29      |
| 1000            | 0.38                | 1.10      |
| 1500            | 0.48                | 1.53      |
| 1700            | 0.69                | 1.84      |
| 2500            | 1.99                | 3.54      |
| 4000            | 4.24                | 6.01      |



### Notes

- Performance and quality attributes and conditions not expressly stated in this specification document are intended to be excluded and do not form a part of this specification document.
- Electrical specifications and performance data contained in this specification document are based on Mini-Circuit's applicable established test performance criteria and measurement instructions.
- The parts covered by this specification document are subject to Mini-Circuits standard limited warranty and terms and conditions (collectively, "Standard Terms"); Purchasers of this part are entitled to the rights and benefits contained therein. For a full statement of the Standard Terms and the exclusive rights and remedies thereunder, please visit Mini-Circuits' website at [www.minicircuits.com/MCLStore/terms.jsp](http://www.minicircuits.com/MCLStore/terms.jsp)



## X-ON Electronics

Largest Supplier of Electrical and Electronic Components

*Click to view similar products for [Signal Conditioning](#) category:*

*Click to view products by [Mini-Circuits](#) manufacturer:*

Other Similar products are found below :

[MAPDCC0001](#) [MAPDCC0004](#) [PD0409J5050S2HF](#) [880157](#) [HHS-109-PIN](#) [DC1417J5005AHF](#) [AFS14A30-2185.00-T3](#) [AFS14A35-1591.50-T3](#) [DS-323-PIN](#) [B39321R801H210](#) [1A0220-3](#) [JP510S](#) [LFB212G45SG8C341](#) [LFB322G45SN1A504](#) [LFL182G45TC3B746](#) [SF2159E](#) [30057](#)  
[FM-104-PIN](#) [CER0813B](#) [MAPDCC0005](#) [3A325](#) [40287](#) [41180](#) [ATB3225-75032NCT](#) [BD0810N50100AHF](#) [BD2425J50200AHF](#)  
[C5060J5003AHF](#) [JHS-115-PIN](#) [JP503AS](#) [DC0710J5005AHF](#) [DC2327J5005AHF](#) [DC3338J5005AHF](#) [43020](#) [LFB2H2G60BB1C106](#)  
[LFL15869MTC1B787](#) [X3C19F1-20S](#) [XC3500P-20S](#) [10013-20](#) [SF2194E](#) [CDBLB455KCAX39-B0](#) [TGL2208-SM, EVAL](#) [RF1353C](#)  
[PD0922J5050D2HF](#) [1E1305-3](#) [1G1304-30](#) [B0922J7575AHF](#) [2020-6622-20](#) [TP-102-PIN](#) [TP-103-PIN](#) [BD1222J50200AHF](#)