

High Linearity Amplifier

ZX60-2411BM+

50Ω 800 MHz to 2400 MHz

Features

- High linearity
- High IP3, +40 dBm typ
- Reverse voltage connection protected
- 4.5V - 5.5V operation
- Small size
- Low cost
- Protected by US patent 6,790,049

Applications

- High linearity drivers
- Buffer amplifier
- Transmit side gain stage
- General purpose small signal
- Lab, instrumentation
- Test equipment



CASE STYLE: GA955

Connectors	Model
SMA	ZX60-2411BM-S+

+RoHS Compliant

The +Suffix identifies RoHS Compliance. See our web site for RoHS Compliance methodologies and qualifications

Electrical Specifications at T_{AMB} = 25°C

MODEL NO.	FREQ. (MHz)	GAIN (dB)				MAXIMUM POWER (dBm)	DYNAMIC RANGE		VSWR (:1) Typ.		ACTIVE DIRECTIVITY (dB) Isolation-Gain	DC VOLTAGE @ PIN V+ (V)	DC OPERATING CURRENT @ PIN V+ (mA)	
		Typ.	Min.	Typ.	Max.		NF (dB)	IP3 (dBm)	In	Out			Typ.	Typ.
ZX60-2411BM+	800-1300	13.50	9.00	±0.7	±1.2	22.00	3.50	42.00	1.40	1.25	7.0	5	280	360
	1300-1900	14.00	10.00	±0.4	±0.7	24.00	2.60	40.00	1.30	1.35	5.0	5	280	360
	1900-2400	13.00	9.00	±0.7	±1.5	23.00	3.00	37.00	1.55	1.70	5.0	5	280	360

Maximum Ratings

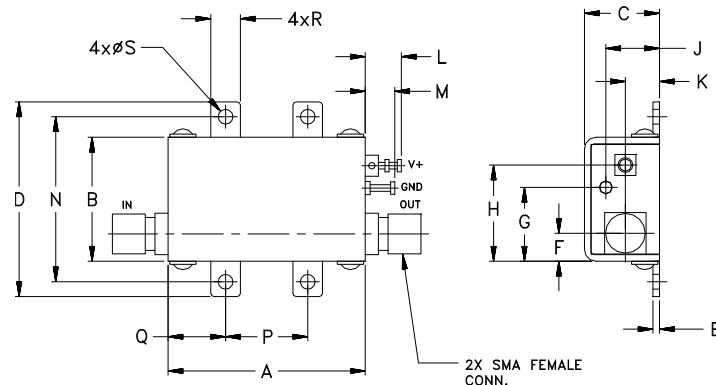
Operating Temperature	-40°C to 80°C case
	-40°C to 50°C ambient at 5V
Storage Temperature	-55°C to 100°C
DC Voltage	6V
Input Power(no Damage)	+14dBm@800-1300MHz
	+15dBm@1300-1900MHz
	+16dBm@1900-2400MHz

Permanent damage may occur if any of these limits are exceeded.



NOTE: When soldering the DC connections, caution must be used to avoid overheating the DC terminals. See Application Note AN-40-10.

Outline Drawing



Outline Dimensions (inch/mm)

A	B	C	D	E	F	G	H	J	K	L	M	N	P	Q	R	S	wt.
1.20	.75	.46	1.18	.04	.17	.45	.59	.33	.21	.22	.18	1.00	.50	.35	.18	.106	grams
30.48	19.05	11.68	29.97	1.02	4.32	11.43	14.99	8.38	5.33	5.59	4.57	25.40	12.70	8.89	4.57	2.69	35.0

Notes

- Performance and quality attributes and conditions not expressly stated in this specification document are intended to be excluded and do not form a part of this specification document.
- Electrical specifications and performance data contained in this specification document are based on Mini-Circuit's applicable established test performance criteria and measurement instructions.
- The parts covered by this specification document are subject to Mini-Circuits standard limited warranty and terms and conditions (collectively, "Standard Terms"); Purchasers of this part are entitled to the rights and benefits contained therein. For a full statement of the Standard Terms and the exclusive rights and remedies thereunder, please visit Mini-Circuits' website at www.minicircuits.com/MCLStore/terms.jsp



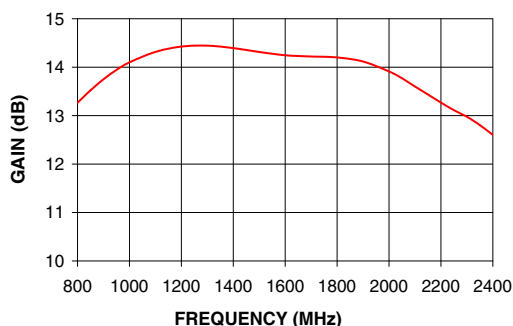
www.minicircuits.com P.O. Box 350166, Brooklyn, NY 11235-0003 (718) 934-4500 sales@minicircuits.com

REV. D
M152326
ED-14322
ZX60-2411BM+
BLUEC
150816
Page 1 of 2

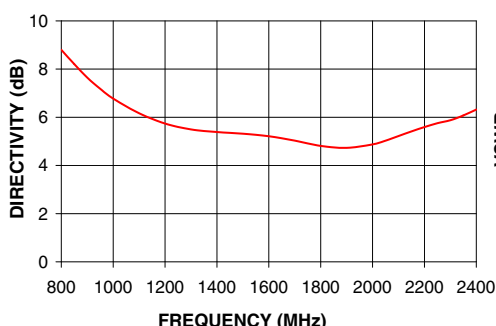
Typical Performance Data & Curves at 25°C ZX60-2411BM+

FREQUENCY (MHz)	GAIN (dB)	DIRECTIVITY (dB)	VSWR IN (:1)	VSWR OUT (:1)	POWER OUT @ 1dB COMPRESSION (dBm)	IP3 (dBm)	NF (dB)
800	13.27	8.80	1.39	1.30	23.49	41.56	3.73
850	13.52	8.21	1.29	1.29	23.64	42.81	3.45
900	13.75	7.65	1.20	1.29	23.79	43.25	3.19
950	13.94	7.18	1.13	1.27	24.19	43.06	3.05
1000	14.10	6.78	1.08	1.25	24.58	42.14	2.91
1100	14.32	6.17	1.01	1.16	25.05	42.50	2.73
1200	14.43	5.74	1.09	1.04	25.38	42.23	2.57
1300	14.45	5.50	1.19	1.10	25.52	41.47	2.49
1400	14.39	5.39	1.30	1.25	25.46	41.39	2.48
1500	14.31	5.32	1.38	1.37	25.40	40.69	2.45
1600	14.25	5.21	1.39	1.42	25.32	40.49	2.46
1700	14.22	5.03	1.30	1.38	25.20	40.11	2.45
1800	14.20	4.81	1.15	1.30	25.50	40.04	2.54
1900	14.12	4.73	1.05	1.30	25.46	39.62	2.61
2000	13.91	4.88	1.27	1.48	25.23	38.99	2.72
2050	13.77	5.03	1.38	1.61	25.02	38.56	2.77
2100	13.60	5.22	1.49	1.73	24.80	38.30	2.78
2150	13.43	5.41	1.56	1.82	24.42	37.74	3.01
2200	13.27	5.60	1.59	1.88	24.03	37.47	2.88
2250	13.11	5.76	1.56	1.88	23.87	37.10	2.95
2300	12.98	5.88	1.49	1.83	23.71	36.93	3.00
2350	12.80	6.08	1.37	1.74	23.36	36.22	3.07
2400	12.60	6.32	1.23	1.64	23.01	35.66	3.27

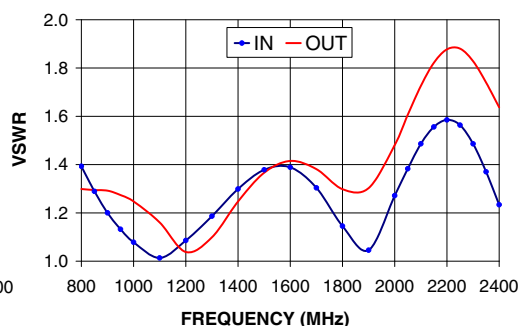
ZX60-2411BM+
GAIN



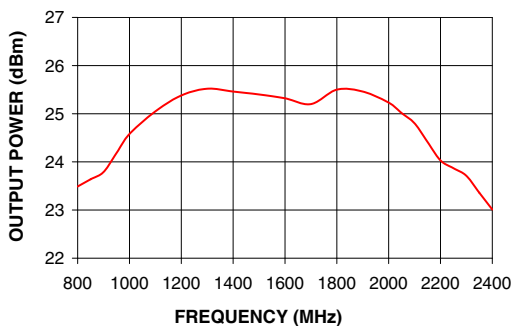
ZX60-2411BM+
DIRECTIVITY



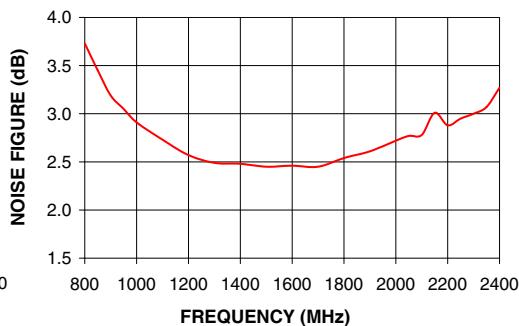
ZX60-2411BM+
VSWR



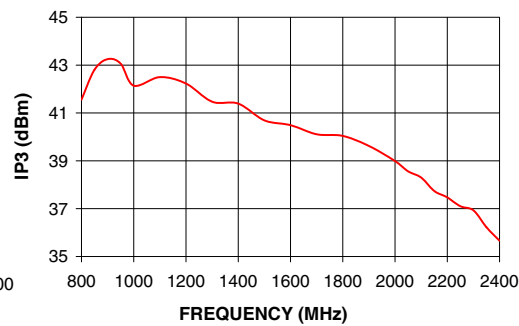
ZX60-2411BM+
OUTPUT POWER AT 1dB COMPRESSION



ZX60-2411BM+
NOISE FIGURE



ZX60-2411BM+
IP3



Notes

- A. Performance and quality attributes and conditions not expressly stated in this specification document are intended to be excluded and do not form a part of this specification document.
- B. Electrical specifications and performance data contained in this specification document are based on Mini-Circuit's applicable established test performance criteria and measurement instructions.
- C. The parts covered by this specification document are subject to Mini-Circuits standard limited warranty and terms and conditions (collectively, "Standard Terms"); Purchasers of this part are entitled to the rights and benefits contained therein. For a full statement of the Standard Terms and the exclusive rights and remedies thereunder, please visit Mini-Circuits' website at www.minicircuits.com/MCLStore/terms.jsp



X-ON Electronics

Largest Supplier of Electrical and Electronic Components

Click to view similar products for [RF Amplifier](#) category:

Click to view products by [Mini-Circuits](#) manufacturer:

Other Similar products are found below :

[A82-1](#) [BGA622H6820XTSA1](#) [BGA 728L7 E6327](#) [BGB719N7ESDE6327XTMA1](#) [HMC397-SX](#) [HMC405](#) [HMC561-SX](#) [HMC8120-SX](#)
[HMC8121-SX](#) [HMC-ALH382-SX](#) [HMC-ALH476-SX](#) [SE2433T-R](#) [SMA3101-TL-E](#) [SMA39](#) [A66-1](#) [A66-3](#) [A67-1](#) [LX5535LQ](#) [LX5540LL](#)
[MAAM02350](#) [HMC3653LP3BETR](#) [HMC549MS8GETR](#) [HMC-ALH435-SX](#) [SMA101](#) [SMA32](#) [SMA411](#) [SMA531](#) [SST12LP17E-XX8E](#)
[SST12LP19E-QX6E](#) [WPM0510A](#) [HMC5929LS6TR](#) [HMC5879LS7TR](#) [HMC1126](#) [HMC1087F10](#) [HMC1086](#) [HMC1016](#) [SMA1212](#)
[MAX2689EWS+T](#) [MACS-007802-0M1RS0](#) [MAAMSS0041TR](#) [MAAM37000-A1G](#) [CHA5115-QDG](#) [SMA70-2](#) [SMA4011](#) [A231](#) [HMC-](#)
[AUH232](#) [LX5511LQ](#) [LX5511LQ-TR](#) [HMC7441-SX](#) [HMC-ALH310](#)