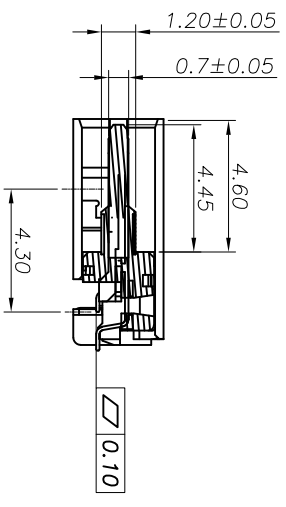
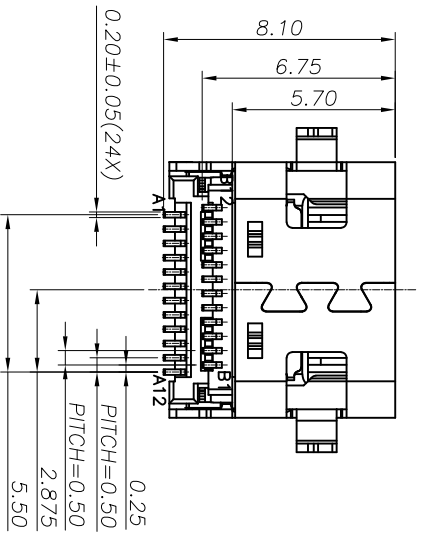
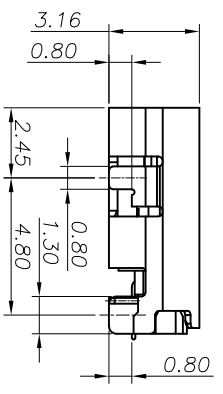
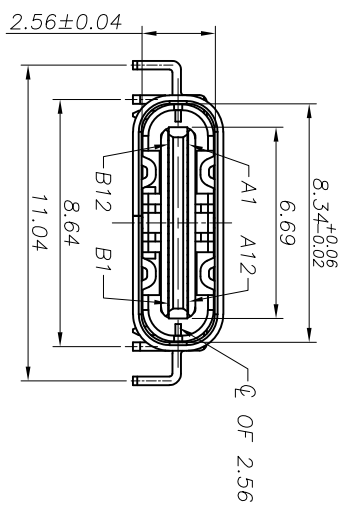
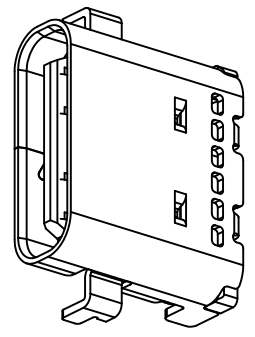
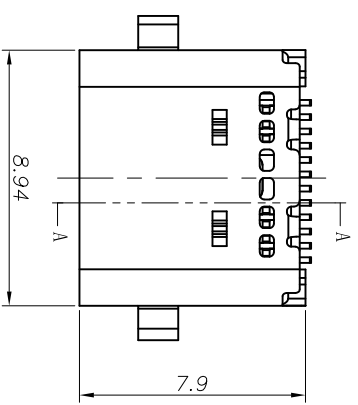


REV.	ECN. NO.	APPD.
A		



- NOTE:  
 1.MATERIAL SPECIFICATION:  
 1.HOUSING:HIGH TEMPERATURE RESISTANT PLASTIC,UL94 V-0.  
 2.CONTACTS: COPPER ALLOY  
 3.MID PLATE: STAINLESS STEEL  
 4.FRONT SHELL: STAINLESS STEEL  
 5.EMI PLATE: STAINLESS STEEL  
 2.PLATING SPECIFICATION:  
 2-1.CONTACTS:  
 NI 50u" MIN. UNDER PLATED OVER ALL.  
 AU PLATED ON THE FUNCTIONAL AREA OF CONTACT.  
 (GOLD PLATING THICKNESS FOLLOW THE P/N)  
 PLATING SPECIFICATIONS OF THE SOLDER AREA FOLLOW THE P/N  
 2-2.FRONT SHELL:  
 NI 30u" MIN. UNDER PLATED OVER ALL.  
 2-3.MID PLATE&EMI PLATE:  
 CLEAR ONLY  
 3.MECHANICAL PERFORMANCE:  
 3-1.INSERTION FORCE: 0.5~2.0kgf.  
 3-2.REMOVAL FORCE: 0.8kgf~2.0kgf.  
 3-3.DURABILITY: 10000 CYCLES.  
 4.ELECTRICAL PERFORMANCE:  
 4-1. CURRENT RATING:5.0A  
 VOLTAGE RATING:5.0V  
 4-2. LCR:  
 VBUS & GND PINS AND OTHER PINS: 40mΩ/PIN MAX.  
 SHIELD: 50mΩ/MAX  
 LCR MAX. CHANGE OF ALL PINS: 10mΩ.  
 4-3.INSULATION RESISTANCE: 100MΩ MIN  
 4-4.DIELECTRIC WITHSTAND VOLTAGE,AC 100V FOR 1 MINUTE.  
 5. ENVIRONMENTAL PERFORMANCE:  
 OPERATING TEMPERATURE: -25°C~+85°C.  
 6.IR REFLOW:  
 THE PEAK TEMPERATURE ON THE BOARD SHALL  
 BE MAINTAINED FOR 10 SECONDS AT 260°C.

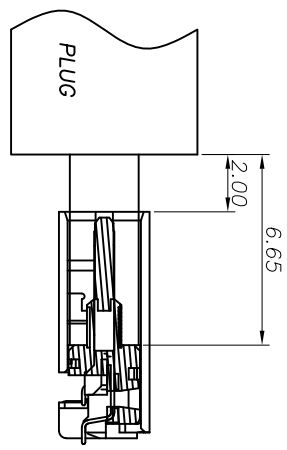
X. ±0.30	X° ±5°	UNITS	mm
X ±0.20	X° ±2°	MATL	
.XX ±0.10	.XX° ±1°	FINISH	
.XXX ±0.05	.XXX° ±0.5°		

TYPE C CONNECTOR	QTY
---------------------	-----

NAME(INTENDED USE)	TITLE:
PART NO.(INTENDED USE)	TYPE C母座沉板0.8 双排SMT
APPD: SUNNY	DWG NO.: 00302-LICAF007-B
CHKD: USA	SCALE 1/1
DR: ZOE	2022-06-10
	SHEET 1/1
	REV. A

**MINTRON CO.,LTD.**

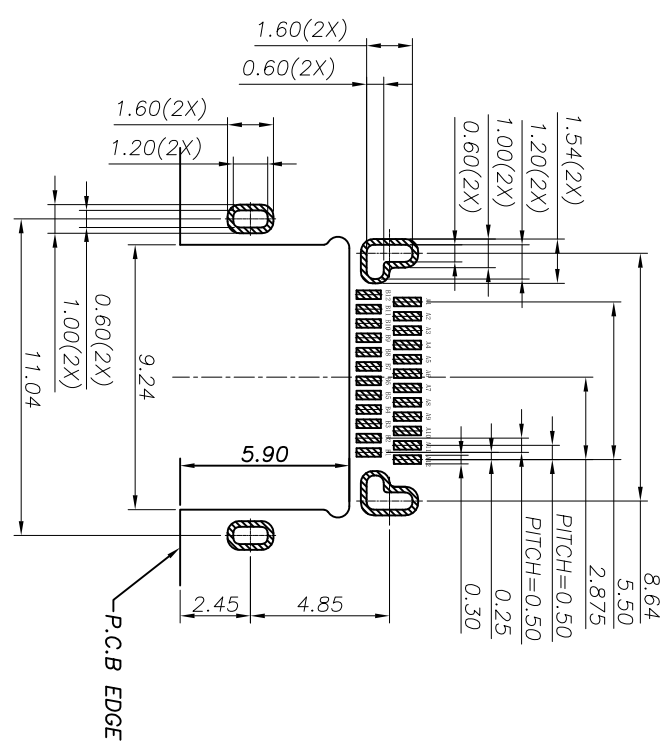
REV.	EQN. NO.	APPD.
A		



AFTER MATING

USB TYPE-C PIN ASSIGNMENTS

PIN NUMBER	SIGNAL NAME	PIN NUMBER	SIGNAL NAME
A1	GND	B12	GND
A4	VBUS	B9	VBUS
A5	CC1	B8	SBU2
A6	Dp1	B7	Dn2
A7	Dn1	B6	Dp2
A8	SBU1	B5	CC2
A9	VBUS	B4	VBUS
A12	GND	B1	GND



RECOMMENDED PCB LAYOUT(TOP VIEW)  
THICKNESS 0.60MM;DEFAULT TOLERANCE:±0.05

X. ±0.30	X.° ±5°	UNITS	mm	NAME(INTENDED USE)	MINTRON CO.,LTD.
.X ±0.20	.X° ±2°	MAT'L		TITLE:	
.XX ±0.10	.XX° ±1°	FINISH		PART NO.(INTENDED USE)	TYPE C母座沉板0.8 双排SMT
.XXX ±0.05	.XXX° ±0.5°	QTY		APPD: SUNNY	DWG NO.: 00302-1(CAF007-B)
TYPE C CONNECTOR		CHKD: LISA		DR: ZOE	SCALE 1/1
		2022-06-10			SHEET 1/1
					REV. A

## X-ON Electronics

Largest Supplier of Electrical and Electronic Components

*Click to view similar products for [USB Connectors](#) category:*

*Click to view products by [MINTRON](#) manufacturer:*

Other Similar products are found below :

[950](#) [A-USB B-TOP-C](#) [MUSBA511N5](#) [MUSBC111M5](#) [MUSBD11135](#) [17-200721](#) [217450-1](#) [KMBVX-TH-5S-B30](#) [896-30-004-00-000000](#)  
[KUSBX-AS2N-W](#) [KUSBX-SMT2AP1S-W30](#) [935](#) [957](#) [30-498-6](#) [SK-60A-2](#) [1734082-1](#) [30-1574](#) [30-470](#) [30-489](#) [30-541](#) [A-USB A-2P-C](#)  
[MIKROE-1451](#) [USBFTV2PEM2G](#) [USBFTVSCCG](#) [4689-1](#) [1-1734084-2](#) [MUSBC11135](#) [USBF21ZNSCC](#) [USBBFTV6ZC](#) [MUSBB151341](#)  
[10135326-001LF](#) [M9177/3-1](#) [TJ-105](#) [USB-A-S-F-B-VT](#) [4198](#) [690-024-633-031](#) [UB-20PMFP-LC7001](#) [USBFTVC6MRG](#) [UA-20BMFA-](#)  
[SL8001](#) [17-200011](#) [USBFTVC7ZC](#) [UB-20AFMM-LL7A01](#) [USBFTVC2MN](#) [CAP-WCCMLPB1](#) [1310-1031-01](#) [2041386-1](#) [2274475-3](#) [UB-](#)  
[20BMFA-SL8001](#) [UB-20PMFP-SC8003](#) [914-614A2025S10200](#)