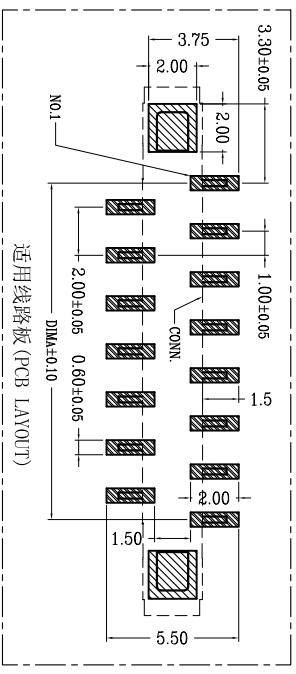
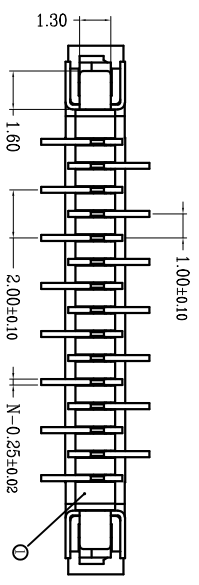
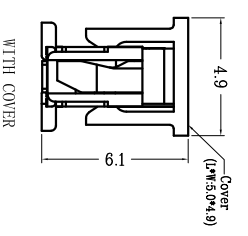
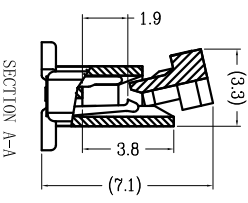
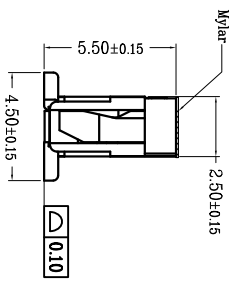
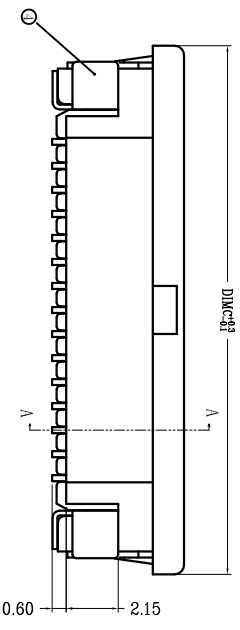
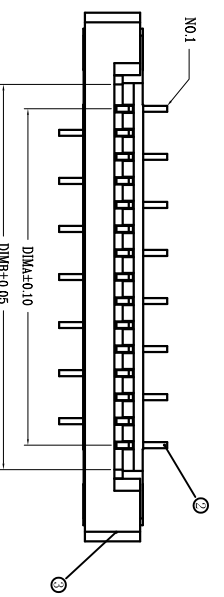
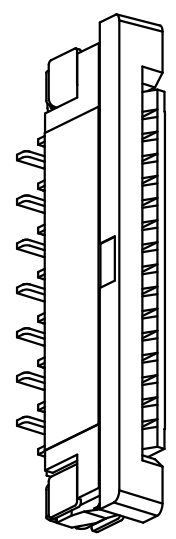
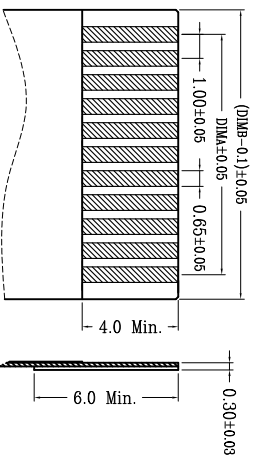


REV.	ECN. NO.	APPD.
A		
序号	品名	材质
①	1.0 R型插座 (H2.5)	LCP UL94V-0 本色
②	1.0 R型立式端子 (0.5, 5)	铜合金/表面镀锡
③	1.0 R型卧式百盖 (0.2, 5)	LCP UL94V-0 黑色
④	1.0 R型立式薄片 (0.5, 5)	铜合金/表面镀锡



CKT	DIMA	DIMB	DIMC
4	3.00	5.03	11.10
5	4.00	6.03	12.10
6	5.00	7.03	13.10
7	6.00	8.03	14.10
8	7.00	9.03	15.10
9	8.00	10.03	16.10
10	9.00	11.03	17.10
11	10.00	12.03	18.10
12	11.00	13.03	19.10
13	12.00	14.03	20.10
14	13.00	15.03	21.10
15	14.00	16.03	22.10
16	15.00	17.03	23.10
17	16.00	18.03	24.10
18	17.00	19.03	25.10
19	18.00	20.03	26.10
20	19.00	21.03	27.10
21	20.00	22.03	28.10
22	21.00	23.03	29.10
23	22.00	24.03	30.10
24	23.00	25.03	31.10
25	24.00	26.03	32.10
26	25.00	27.03	33.10
27	26.00	28.03	34.10
28	27.00	29.03	35.10
29	28.00	30.03	36.10
30	29.00	31.03	37.10
31	30.00	32.03	38.10
32	31.00	33.03	39.10
33	32.00	34.03	40.10
34	33.00	35.03	41.10
35	34.00	36.03	42.10
36	35.00	37.03	43.10
37	36.00	38.03	44.10
38	37.00	39.03	45.10
39	38.00	40.03	46.10
40	39.00	41.03	47.10



NO OF CKT (产品PIN数)  
 Plating(电镀方式)  
 O: 端子全镀锡  
 1: 端子全镀(G/F OVERALL)

Packing(包装方式)  
 T: TUBE 管装  
 R: TAPE & REEL 卷装  
 C: TAPE & REEL WITH COVER 吸盘卷装

技术指标:  
 1. 塑件表面应光洁、无毛边、无明显收缩、缺陷、裂纹等现象。  
 2. 温度范围: -25°C~85°C。  
 3. 额定电压: 50V, AC/DC(等效)。  
 4. 接触电阻: ≤0.03Ω。  
 5. 绝缘电阻: ≥500MΩ。  
 6. 产品料号:  
 LL10554—XX X X X

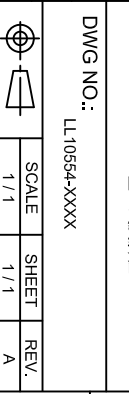
X.	±0.30	X°	±5°	UNITS	mm
.X	±0.20	.X°	±2°	MATL	
.XX	±0.10	.XX°	±1°	FINISH	
.XXX ± 0.05	.XXX° ± 0.5°				

NAME(INTENDED USE)	PART NO.(INTENDED USE)	APPD:	CHKD:	DR:
		SUNNY	LISA	ZOE

TITLE: FPC1.0 R型立式反脚位  
 DWG NO.: LL10554-XXXX

FPC CONNECTOR	QTY	SCALE	SHEET	REV.
		1/1	1/1	A

DATE	DR	CHKD	APPD
2015-12-10	ZOE	LISA	SUNNY



## X-ON Electronics

Largest Supplier of Electrical and Electronic Components

*Click to view similar products for [FFC & FPC Connectors](#) category:*

*Click to view products by [MINTRON](#) manufacturer:*

Other Similar products are found below :

[00-6200-227-022-800](#) [006205250500825+](#) [006205280500825+](#) [FPH-1602G](#) [086222026001800](#) [52610-0675](#) [62674-201121DLF](#) [52746-1671-TR250](#) [10051922-1610EHLF](#) [10051922-2810EHLF](#) [686322124422](#) [XF3M-2915-1B-R100](#) [AYF353125A](#) [AYF530665TA](#) [AYF534065TA](#) [20FLH-RSM1-TB](#) [PCA-7F-25-HL-3-G](#) [207356-1](#) [52807-0430](#) [FFC05011-10SBB114W5M](#) [502250-8027](#) [FH28K-40S-0.5SH](#) [200528-0260](#) [FH28K-10S-0.5SH](#) [501951-1250](#) [X05B20U43T](#) [0.5K-DX-30PWB](#) [DS1020-08-10VBT12](#) [THD0515-34CL-GF](#) [X05A10L28G](#) [ECC2841061EU](#) [20539-030E-01](#) [1.0K-DHQX-16PWB](#) [1.0K-DHQX-30PWB](#) [1775333-6](#) [10054365-202110ELF](#) [10054365-242110ELF](#) [10054365-282110ELF](#) [10064555-392220HLF](#) [59453-041110EBHLF](#) [59453-091110EDHLF](#) [62674-241141ALF](#) [62684-432100ALF](#) [62684-451100AHLF](#) [62684-5721N0ALF](#) [HFW11R-1STE1MTLF](#) [HFW12R-1STE9LF](#) [HFW14R-1STE9MTLF](#) [HFW18S-2STE9LF](#) [HFW20R-1STAE1HLF](#)