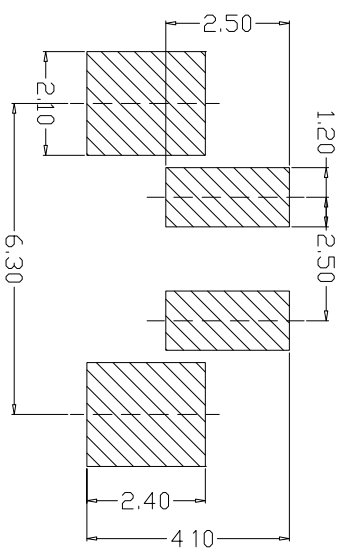
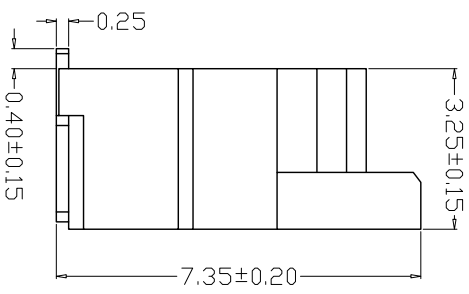
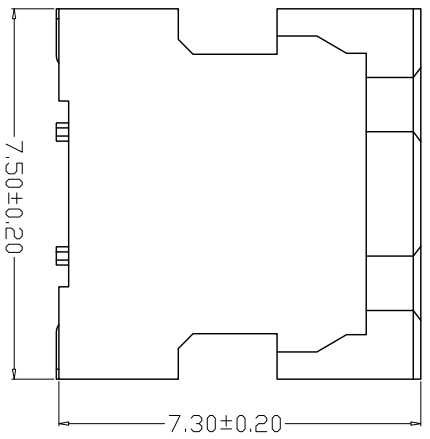
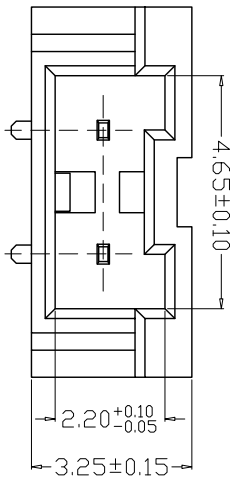
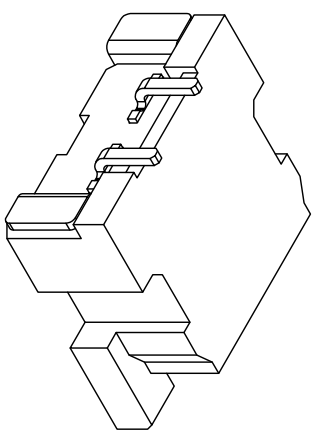


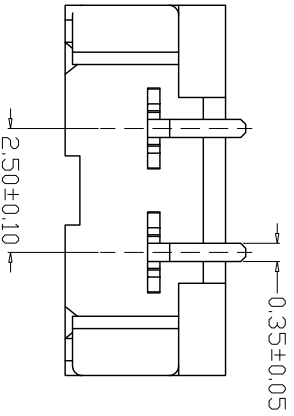
REV.	ECN. NO.	APPD.
A		

SPECIFICATIONS

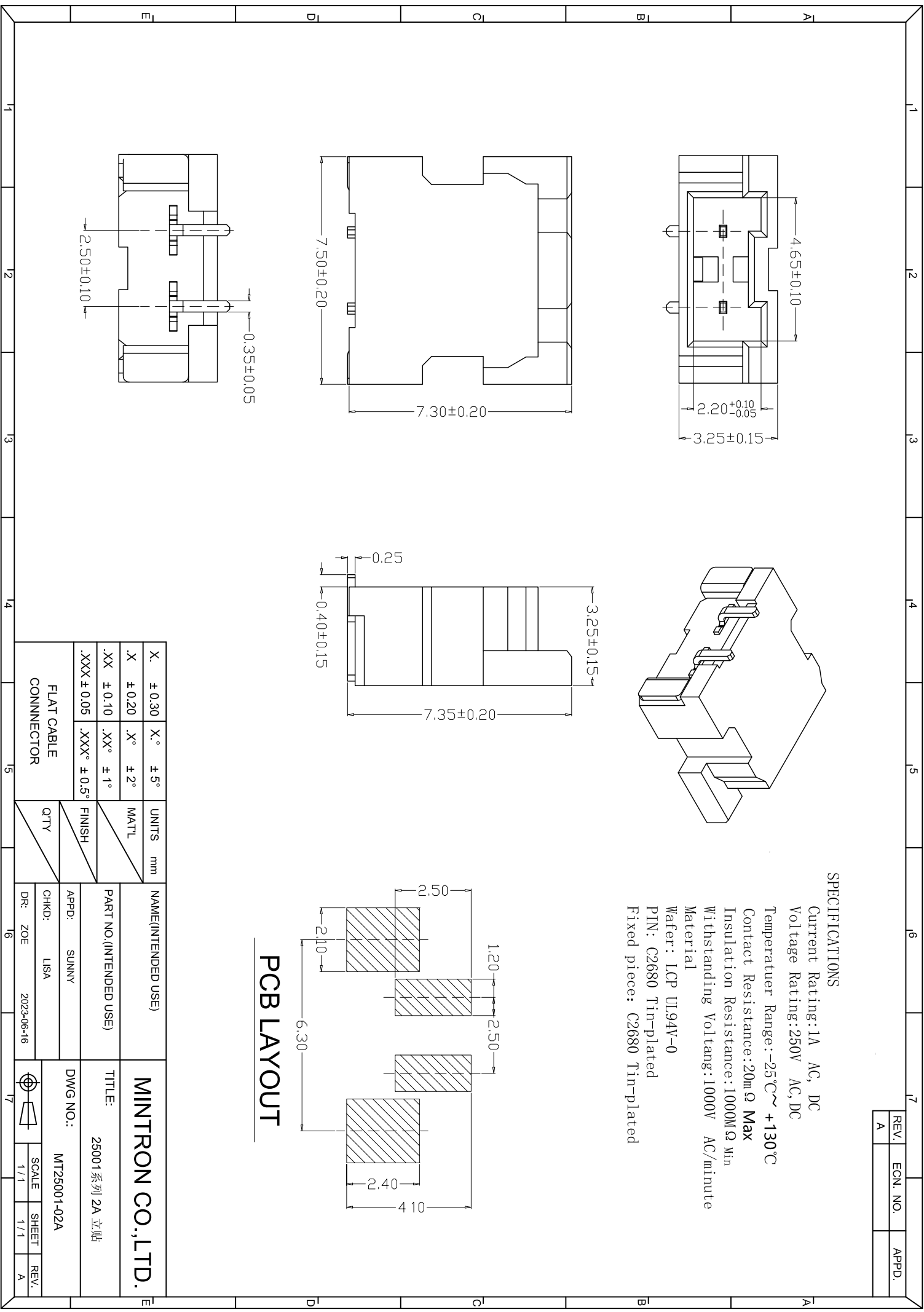
Current Rating: 1A AC, DC
Voltage Rating: 250V AC, DC
Temperature Range: -25°C ~ +130°C
Contact Resistance: 20mΩ Max
Insulation Resistance: 1000MΩ Min
Withstanding Voltage: 1000V AC/minute
Material
Wafer: LCP UL94V-0
PIN: C2680 Tin-plated
Fixed piece: C2680 Tin-plated



PCB LAYOUT



X. ±0.30	X.° ±5°	UNITS	mm	NAME (INTENDED USE)	MINTRON CO., LTD.
X ±0.20	X° ±2°	MAT'L			
.XX ±0.10	.XX° ±1°	FINISH		PART NO. (INTENDED USE)	25001 系列 2A 立贴
.XXX ±0.05	.XXX° ±0.5°	QTY		APPD.: SUNNY	DWG. NO.: MT25001-02A
FLAT CABLE CONNECTOR				CHKD.: USA	SCALE 1/1
				DR: ZOE	2023-06-16
				SHEET 1/1	
				REV. A	



X-ON Electronics

Largest Supplier of Electrical and Electronic Components

Click to view similar products for [Headers & Wire Housings](#) category:

Click to view products by [MINTRON](#) manufacturer:

Other Similar products are found below :

[57102-F02-18ULF](#) [58102-G61-06LF](#) [582553-1](#) [009176003701906](#) [01.001.5753.1](#) [0050291907](#) [02.125.8002.8](#) [609-3404](#) [61062-3](#)
[CSU011177004](#) [622-0430](#) [622-3653LF](#) [63453-116](#) [636-1030](#) [636-1427](#) [636-3427](#) [636-4007](#) [641938-9](#) [644827-2](#) [65495-038](#) [65692-001LF](#)
[65781-018](#) [65781-047](#) [65817-010LF](#) [65817-015LF](#) [66207-023LF](#) [67095-007LF](#) [67601157](#) [68631-112](#) [68645-018](#) [699319-000](#)
[M90C108951C](#) [70.362.1628.0](#) [70-4210](#) [70-4226B](#) [70-4853B](#) [707-5028](#) [71.350.2428.0](#) [71961-016LF](#) [733-134](#) [733-162](#) [754199-000](#) [760-](#)
[3052](#) [80.063.4001.1](#) [800-90-001-10-001000](#) [800-90-010-10-002000](#) [801-43-002-10-013000](#) [801-43-006-10-002000](#) [803-41-018-10-001000](#)
[803-43-024-10-001000](#)