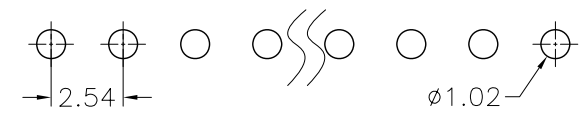
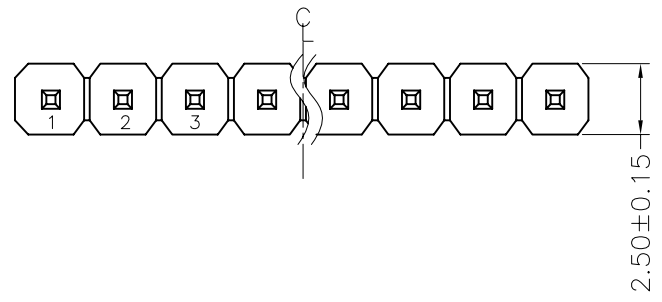


| | | |
|------|----------|-------|
| REV. | ECN. NO. | APPD. |
| A | | |

NOTES:
 Current Rating:3.0AMP
 Contact Resistance:20mΩ max
 Withstand Voltage:500V AC/DC
 Insulation Resistance:1000MΩ min
 Operation Temperature:-40°C to +105°C

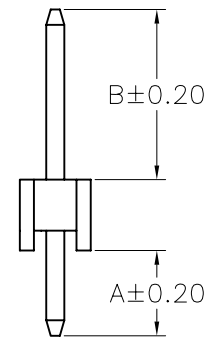
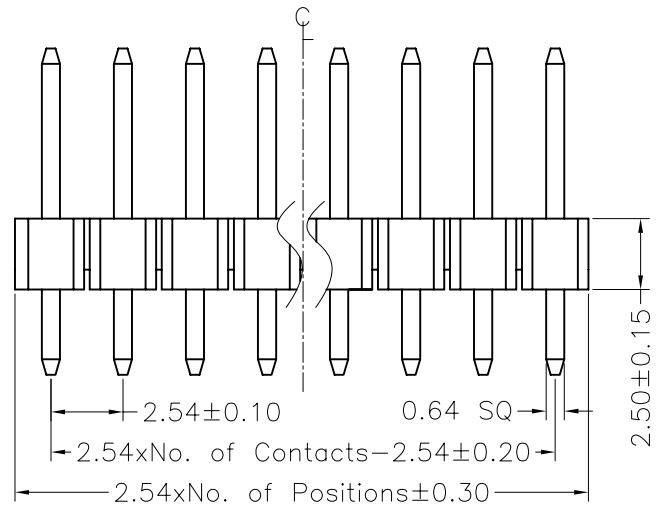
Contact Material:Brass
 Contact plating:Au or Sn Over Ni
 Insulator Material:PBT or PA6T+30%GF(UL94V-0)

Recommended P.C.B Layout(Top Side)
 (PCB BOARD TOLERANCE±0.05)



MTP125-11XXS1- X

No.of Pins per Row: 01~40
 Colour
 R : red
 Y : yellow
 W : white
 G : green
 B : blue



| Dimension antitheses list | | |
|---------------------------|------|------|
| ITEM | A | B |
| Standard | 3.00 | 6.00 |
| Alternate | | |

| | | | | | | | |
|----------------------|--------------|----------|--------------------|------------------|--------|---------------------------|-------------|
| X. ± 0.30 | X.° ± 5° | UNITS mm | NAME(INTENDED USE) | MINTRON CO.,LTD. | | | |
| .X ± 0.20 | .X° ± 2° | | | | MAT'L | TITLE: MTP125-11XXS1-X | |
| .XX ± 0.10 | .XX° ± 1° | | | | FINISH | | APPD: SUNNY |
| .XXX ± 0.05 | .XXX° ± 0.5° | | | | Q'TY | | |
| PIN HEADER CONNECTOR | | | DR: ZOE | 2006-11-28 | | | |
| | | | DWG NO.: | | | | |
| | | | SCALE 1/1 | | | | |
| | | | SHEET 1/1 | | | | |
| | | | REV. A | | | | |

X-ON Electronics

Largest Supplier of Electrical and Electronic Components

Click to view similar products for [Headers & Wire Housings](#) category:

Click to view products by [MINTRON](#) manufacturer:

Other Similar products are found below :

[0015917161](#) [0022155065](#) [57102-F02-18ULF](#) [58102-G61-06LF](#) [582553-1](#) [01.001.5753.1](#) [0050291907](#) [02.125.8002.8](#) [609-3404](#) [61062-3](#)
[CSU011177004](#) [622-0430](#) [622-3653LF](#) [63453-116](#) [636-1030](#) [636-1427](#) [636-3427](#) [636-4007](#) [641938-9](#) [65495-038](#) [65692-001LF](#) [65781-018](#)
[65781-047](#) [65817-010LF](#) [65817-015LF](#) [67095-007LF](#) [67601157](#) [68631-112](#) [68645-018](#) [699319-000](#) [70.362.1628.0](#) [70-4210](#) [70-4226B](#) [70-](#)
[4853B](#) [71.350.2428.0](#) [733-134](#) [733-162](#) [760-3052](#) [MHR-64-VUAL](#) [80.063.4001.1](#) [800-90-001-10-001000](#) [801-43-002-10-013000](#)
[801-43-006-10-002000](#) [803-43-024-10-001000](#) [803-93-012-10-001000](#) [8-1437020-4](#) [819-22-004-30-001101](#) [820-22-006-30-001101](#)
[820-22-008-30-001101](#) [821-22-002-10-001101](#)