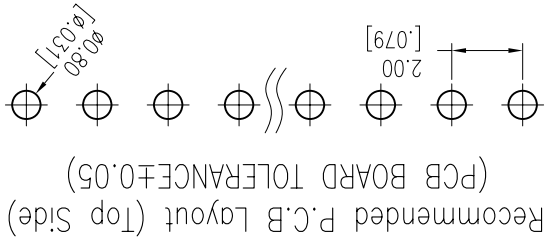
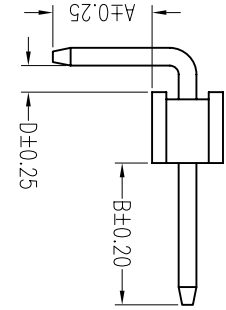
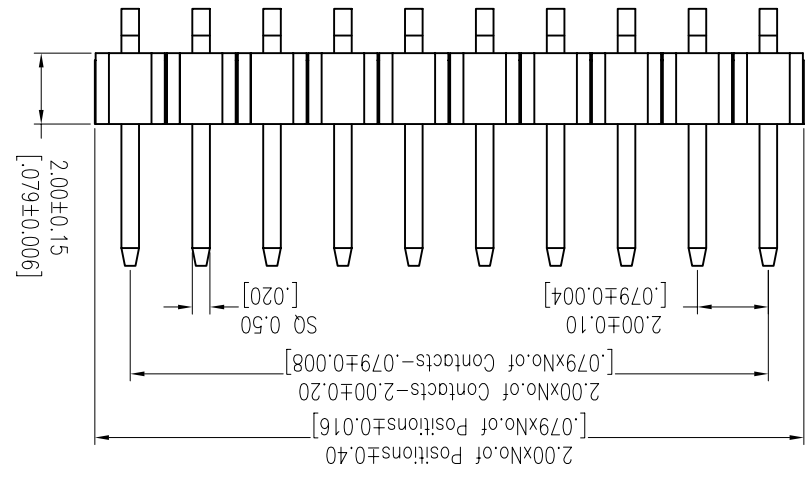
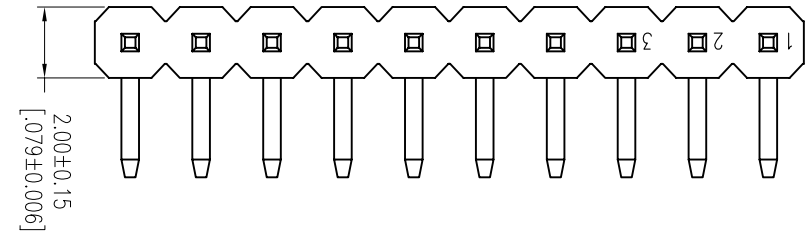
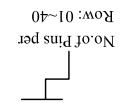


NOTES:  
 Rated Current:2.0AMP.  
 Contact Resistance:20mΩ Max.  
 Withstand Voltage:50V AC/DC  
 Insulation Resistance:100MΩ Min.  
 Operation Temperature:-40℃ to +105℃  
 Contact Material:Brass  
 Contact Plating:Au or Sn Over Ni  
 Insulator Material:PA9T+30%G.F UL94V-0 BK

## Ordering Information

MTP220-11XXR1



X. ± 0.30		X. ± 5°	UNITS	mm
X. ± 0.20		X. ± 2°	MAT'L	
.XX ± 0.10		.XX° ± 1°	FINISH	
.XXX ± 0.05		.XXX° ± 0.5°	QTY	
PIN HEADER CONNECTOR				
DR: ZOE		2006-11-28		
CHKD: LISA				
APPD: SUNNY				
PART NO.(INTENDED USE)				
NAME(INTENDED USE)				
TITLE: MTP220-11XXR1		DWG NO.:		
SCALE: 1/1		SHEET: 1/1		
REV: A				

Item	Pin Length	A	D	B	Mating
Standard	10.50	2.80	0.75	4.00	2240 2243 2263 2272
Alternate					

REV.	ECN. NO.	APPD.
A		

## X-ON Electronics

Largest Supplier of Electrical and Electronic Components

*Click to view similar products for [Headers & Wire Housings](#) category:*

*Click to view products by [MINTRON](#) manufacturer:*

Other Similar products are found below :

[95000-104TRLF](#) [10135584-644402LF](#) [DF62W-EP2022PCA](#) [95000-106TRLF](#) [DF62W-2022SCA](#) [DF62W-EP2022PC](#) [2203348](#) [DF62W-2022SC](#) [1084018](#) [1029039](#) [1084017](#) [802-10-012-10-002000](#) [1112640](#) [1112639](#) [891-007-9SS-BST1T](#) [000-34000](#) [0008550134](#) [0009482033](#) [0009507031](#) [57102-F02-18ULF](#) [57102-S06-03LF](#) [57202-S52-04LF](#) [PCN6-15S-2.5E](#) [0039019024](#) [58102-G61-06LF](#) [582553-1](#) [0009485154](#) [0009508121](#) [0022285053](#) [0050291907](#) [018731A](#) [LY20-4P-DT1-P1E-BR](#) [02.125.8002.8](#) [60101931](#) [60598-1 \(Cut Strip\)](#) [M1625-3R/100](#) [61062-3](#) [61082-181009](#) [CSU011177004](#) [636-1427](#) [638009-1](#) [641938-9](#) [641991-4](#) [644168-1](#) [644827-2](#) [647662-1](#) [65039-019ELF](#) [65692-001LF](#) [65781-018](#) [65781-047](#)