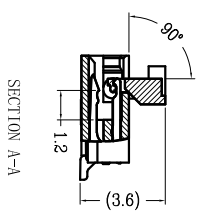
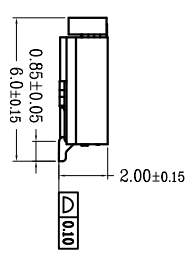
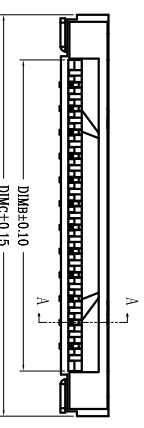
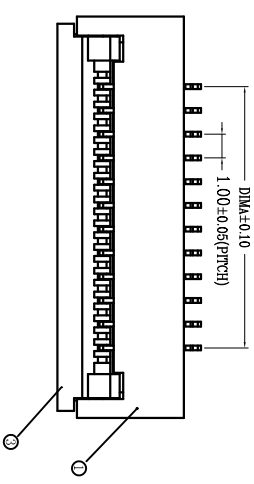
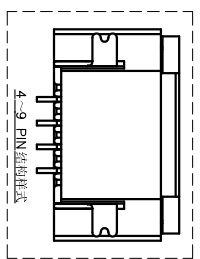
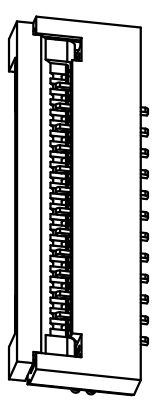
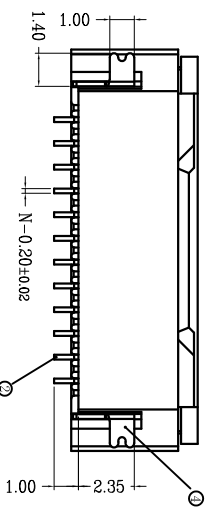
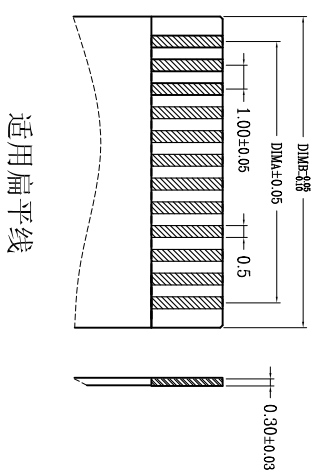
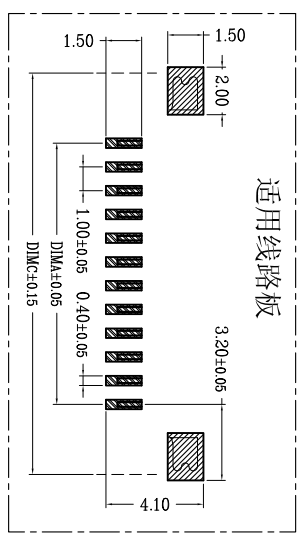


REV.	ECN. NO.	APPD.
A		
序号	品名	材质
①	0.5mm 盖板芯 (H2.0)	LCF U94V40 本色
②	0.5mm 盖端子 (H2.0)	磷青铜/表面镀锌
③	0.5mm 盖后盖 (H2.0)	LCF U94V40 黑色
④	0.5mm 盖垫片 (H2.0)	黄铜/表面镀锌



CKT	DIMA	DIMB	DIMC
4	3.00	5.10	8.90
5	4.00	6.10	9.90
6	5.00	7.10	10.90
7	6.00	8.10	11.90
8	7.00	9.10	12.90
9	8.00	10.10	13.90
10	9.00	11.10	14.90
11	10.00	12.10	15.90
12	11.00	13.10	16.90
13	12.00	14.10	17.90
14	13.00	15.10	18.90
15	14.00	16.10	19.90
16	15.00	17.10	20.90
17	16.00	18.10	21.90
18	17.00	19.10	22.90
19	18.00	20.10	23.90
20	19.00	21.10	24.90
21	20.00	22.10	25.90
22	21.00	23.10	26.90
23	22.00	24.10	27.90
24	23.00	25.10	28.90
25	24.00	26.10	29.90
26	25.00	27.10	30.90
27	26.00	28.10	31.90
28	27.00	29.10	32.90
29	28.00	30.10	33.90
30	29.00	31.10	34.90



技术指标:

1. 塑件表面应光洁、无毛边、无明显收缩、缺胶、裂纹等现象。
2. 温度范围: -25° C~85° C.
3. 额定电压: 50V, AC/DC (等效).
4. 接触电阻: ≤0.03Ω.
5. 绝缘电阻: ≥500MΩ
6. 产品料号:

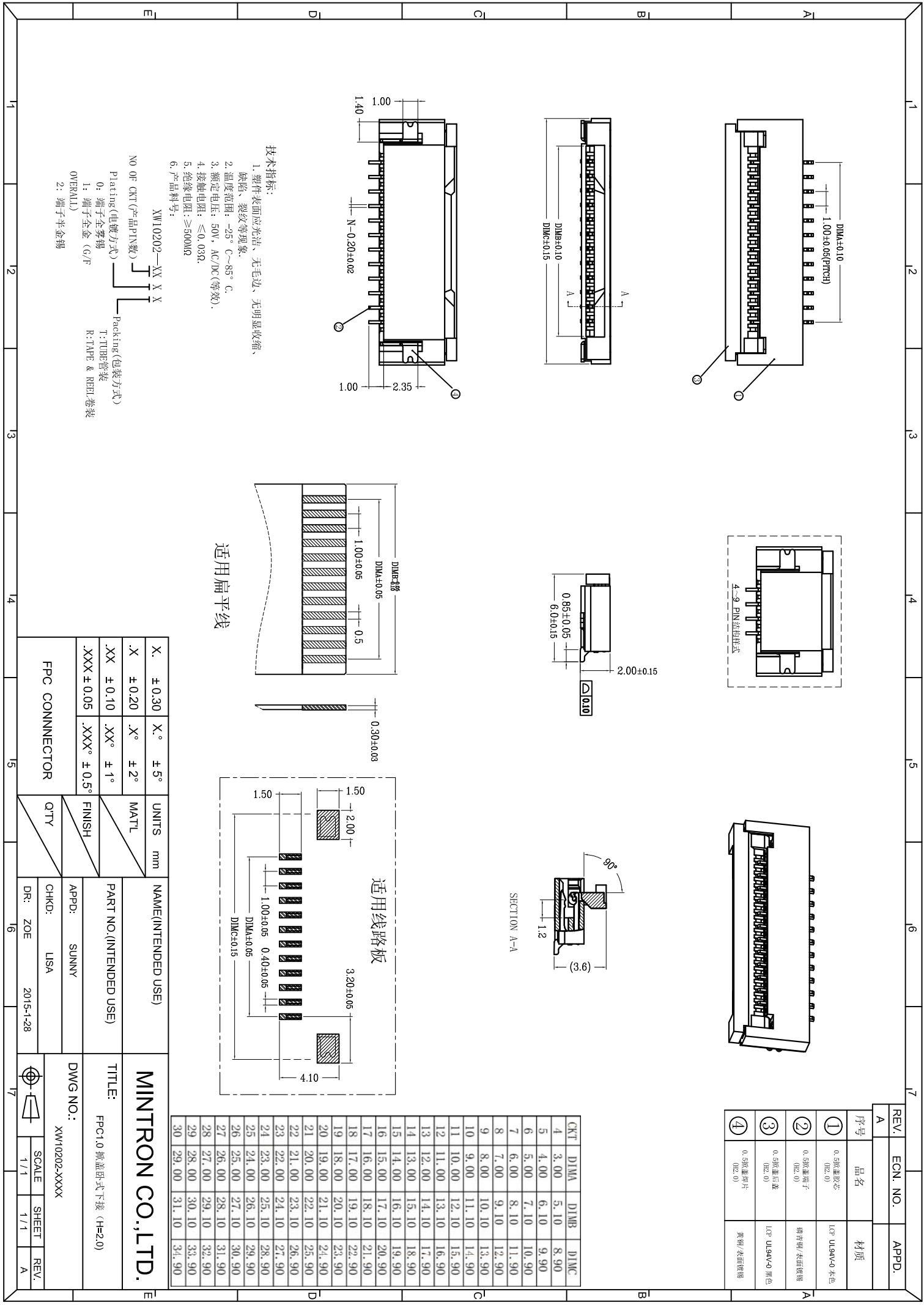
XW10202-XX X X  
 NO OF CKT (产品PIN数)  
 Plating (电镀方式)  
 0: 端子全镀锡  
 1: 端子全金 (G/F)  
 OVERALL  
 2: 端子半金锡

Packaging (包装方式)  
 T: TUBE 管装  
 R: TAPE & REEL 卷装

X.	± 0.30	X.°	± 5°
X	± 0.20	X.°	± 2°
.XX	± 0.10	.XX°	± 1°
.XXX	± 0.05	.XXX°	± 0.5°

NAME (INTENDED USE)	UNITS	mm
PART NO. (INTENDED USE)	MAT'L	
APPD:	FINISH	
CHKD:	QTY	
DR: ZOE		

TITLE:	DWG NO.:
FPC: 0.5mm 盖板式下接 (H=2.0)	XW10202-XXXX
MINTRON CO., LTD.	
SCALE	SHEET
1/1	1/1
REV.	A



## X-ON Electronics

Largest Supplier of Electrical and Electronic Components

*Click to view similar products for [FFC & FPC Connectors](#) category:*

*Click to view products by [MINTRON](#) manufacturer:*

Other Similar products are found below :

[00-6200-227-022-800](#) [006205250500825+](#) [006205280500825+](#) [FPH-1602G](#) [086222026001800](#) [52610-0675](#) [62674-201121DLF](#) [52746-1671-TR250](#) [10051922-1610EHLF](#) [10051922-2810EHLF](#) [686322124422](#) [XF3M-2915-1B-R100](#) [AYF353125A](#) [AYF530665TA](#) [AYF534065TA](#) [20FLH-RSM1-TB](#) [PCA-7F-25-HL-3-G](#) [207356-1](#) [52807-0430](#) [FFC05011-10SBB114W5M](#) [502250-8027](#) [FH28K-40S-0.5SH](#) [200528-0260](#) [FH28K-10S-0.5SH](#) [501951-1250](#) [X05B20U43T](#) [0.5K-DX-30PWB](#) [DS1020-08-10VBT12](#) [THD0515-34CL-GF](#) [X05A10L28G](#) [ECC2841061EU](#) [20539-030E-01](#) [1.0K-DHQX-16PWB](#) [1.0K-DHQX-30PWB](#) [1775333-6](#) [10054365-202110ELF](#) [10054365-242110ELF](#) [10054365-282110ELF](#) [10064555-392220HLF](#) [59453-041110EBHLF](#) [59453-091110EDHLF](#) [62674-241141ALF](#) [62684-432100ALF](#) [62684-451100AHLF](#) [62684-5721N0ALF](#) [HFW11R-1STE1MTLF](#) [HFW12R-1STE9LF](#) [HFW14R-1STE9MTLF](#) [HFW18S-2STE9LF](#) [HFW20R-1STAE1HLF](#)