



MK DDR3L Product Family

DDR3L 128Mx16 Specification

Product List

MKR3128M1688MBE

DDR3L 128Mx16

<http://www.mkfounder.com>



Description

The MKR3128M1688MBE is a 2Gb DDR3L SDRAM consisting of 16Mb x 8 banks x 16 bits I/O. DDR3L 1.35V is a low voltage version of DDR3 1.5V MKR3128M1688SBE. The MKR3128M1688MBE/SBE is packaged into 7.5x13 mm 96 Balls FBGA.

Features

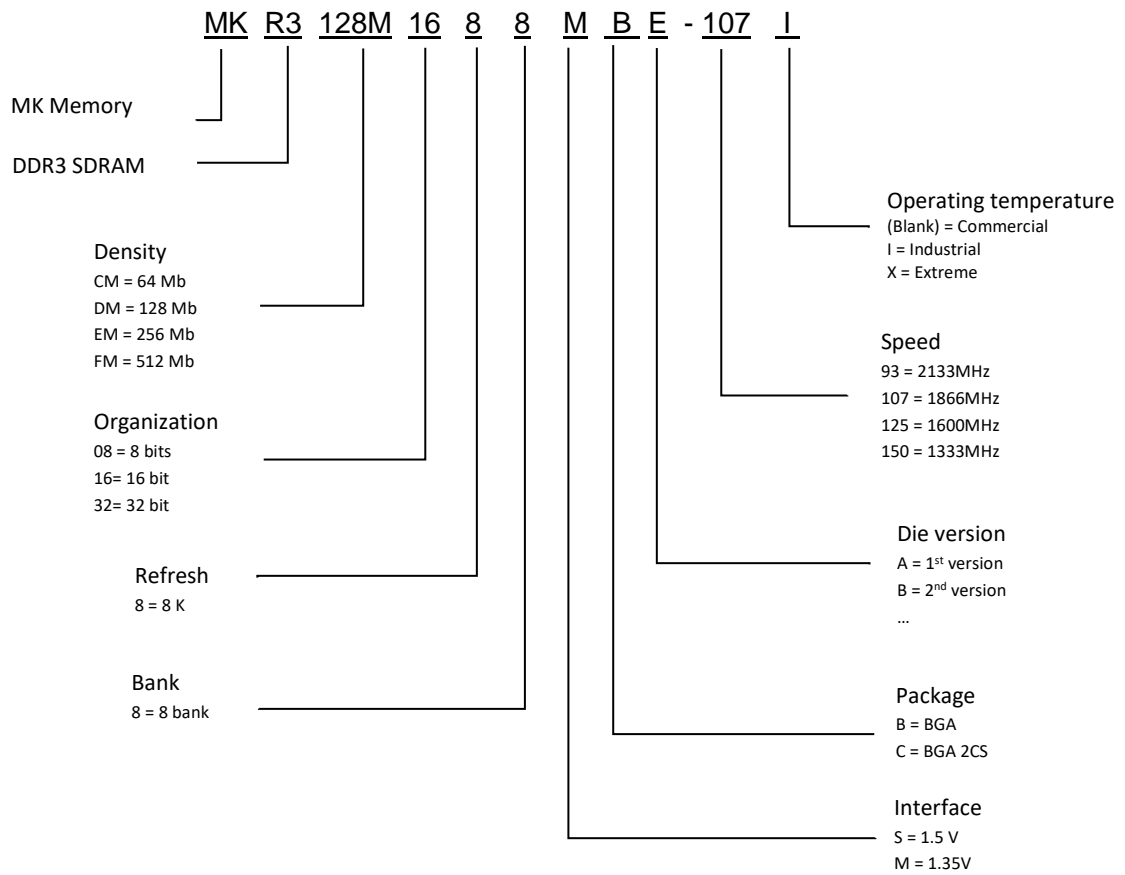
- Power Supply: $V_{DD} = 1.35V -0.065/+0.1V$ or $1.5V \pm 0.075V$
- $V_{DDQ} = 1.35V -0.065/+0.1V$ or $1.5V \pm 0.075V$
- Functionality and operations comply with the DDR3/L SDRAM standards
- 8 internal banks
- 1 rank
- Speed: -125 is DDR3/L-1600, and -107 is DDR3/L-1866
- Data transfer rates: PC3-12800, and PC3-14900
- Bi-Directional Differential Data Strobe
- 8 bit pre-fetch
- Burst Length (BL) switch on-the-fly BL8 or BC4 (Burst Chop)
- On-Die Termination (ODT)
- Programmable CAS (READ) latency (CL)
- Programmable posted CAS additive latency (AL)
- Programmable CAS (WRITE) latency (CWL)
- This product is in compliance with the RoHS directive
- Operating temperature: $-55^{\circ}C$ to $+125^{\circ}C$
 - 64ms, 8192-cycle refresh at $-55^{\circ}C$ to $+85^{\circ}C$
 - 32ms at $+85^{\circ}C$ to $+105^{\circ}C$
 - 8ms at $+105^{\circ}C$ to $+125^{\circ}C$



Revision History

Revision	Update
Revision 1.0 (May. 2022)	First release

Part Numbering





Ordering Information

Part No	Organization	Voltage	Max. Frequency	Package	Grade
MKR3128M1688MBE-107	128M x 16	1.35V	DDR3L-1866 (13-13-13)	FBGA-96B	Commercial
MKR3128M1688MBE-107I	128M x 16	1.35V	DDR3L-1866 (13-13-13)	FBGA-96B	Industrial
MKR3128M1688MBE-125	128M x 16	1.35V	DDR3L-1600 (11-11-11)	FBGA-96B	Commercial
MKR3128M1688MBE-125I	128M x 16	1.35V	DDR3L-1600 (11-11-11)	FBGA-96B	Industrial
MKR3128M1688SBE-107	128M x 16	1.5V	DDR3-1866 (13-13-13)	FBGA-96B	Commercial
MKR3128M1688SBE-107I	128M x 16	1.5V	DDR3-1866 (13-13-13)	FBGA-96B	Industrial
MKR3128M1688SBE-125	128M x 16	1.5V	DDR3-1600 (11-11-11)	FBGA-96B	Commercial
MKR3128M1688SBE-125I	128M x 16	1.5V	DDR3-1600 (11-11-11)	FBGA-96B	Industrial

Note: Speed (t^{CK*}) is in order of CL-t^{RCD}-t^{RP}



Ball Assignment

Top view						
1	2	3		7	8	9
VDDQ	DQ13	DQ15	A	DQ12	VDDQ	VSS
VSSQ	VDD	VSS	B	/UDQS	DQ14	VSSQ
VDDQ	DQ11	DQ9	C	UDQS	DQ10	VDDQ
VSSQ	VDDQ	UDM	D	DQ8	VSSQ	VDD
VSS	VSSQ	DQ0	E	LDM	VSSQ	VDDQ
VDDQ	DQ2	LDQS	F	DQ1	DQ3	VSSQ
VSSQ	DQ6	/LDQS	G	VDD	VSS	VSSQ
VREFDQ	VDDQ	DQ4	H	DQ7	DQ5	VDDQ
NC	VSS	/RAS	J	CK	VSS	NC
ODT	VDD	/CAS	K	/CK	VDD	CKE
NC	/CS	/WE	L	A10/AP	ZQ	NC
VSS	BA0	BA2	M	NC	VREFCA	VSS
VDD	A3	A0	N	A12/BC	BA1	VDD
VSS	A5	A2	P	A1	A4	VSS
VDD	A7	A9	R	A11	A6	VDD
VSS	/RESET	A13	T	NC	A8	VSS

**Ball Description**

Symbol	Type	Function
CK, /CK	Input	Clock: CK and /CK are differential clock inputs. All address and control input signals are sampled on the crossing of the positive edge of CK and negative edge of /CK. Output (read) data is referenced to the crossings of CK and /CK
CKE	Input	Clock Enable: CKE HIGH activates, and CKE Low deactivates, internal clock signals and device input buffers and output drivers. Taking CKE Low provides Pre-charge Power-Down and Self Refresh operation (all banks idle), or Active Power-Down (Row Active in any bank). CKE is asynchronous for self-refresh exit. After VREFCA has become stable during the power on and initialization sequence, it must be maintained during all operations (including Self-Refresh). CKE must be maintained high throughout read and write accesses. Input buffers, excluding CK, /CK, ODT and CKE are disabled during Power Down. Input buffers, excluding CKE, are disabled during Self Refresh
/CS	Input	Chip Select: All commands are masked when /CS is registered HIGH. /CS provides for external Rank selection on systems with multiple Ranks. /CS is considered part of the command code.
ODT	Input	On Die Termination: ODT (registered HIGH) enables termination resistance internal to the DDR3/L SDRAM. When enabled, ODT is only applied to each DQ, DQS, /DQS and DM. The ODT pin will be ignored if the Mode Register (MR1) is programmed to disable ODT.
/RAS, /CAS, /WE	Input	Command Inputs: /RAS, /CAS and /WE (along with /CS) define the command being entered.
UDM, LDM	Input	Input Data Mask: DM is an input mask signal for write data. Input data is masked when DM is sampled HIGH coincident with that input data during a Write access. DM is sampled on both edges of DQS.
BA0~ BA2	Input	Bank Address Inputs: BA0-BA2 define the bank to which an Active, Read, Write or Pre-charge command is being applied. Bank address also determines if the mode register or extended mode register is to be accessed during a MRS cycle.
A0~ A13	Input	Address Inputs: Provide the row address for Active commands and the column address for Read/Write commands to select one location out of the memory array in the respective bank. The address inputs also provide the op-code during Mode Register Set commands. (A10/AP and A12/BC have
A10 / AP	Input	Auto Pre-charge: A10 is sampled during Read/Write commands to determine whether Auto pre-charge should be performed to the accessed bank after the Read/Write operation (HIGH: Auto pre-charge; LOW: No Auto pre-charge). A10 is sampled during a Pre-charge command to determine whether the Pre-charge applies to one bank (A10 LOW) or all banks (A10 HIGH). If only one bank is to be pre-charged, the bank is selected by bank addresses.
A12 / BC	Input	Burst Chop: A12 is sampled during Read and Write commands to determine if burst chop (on-the-fly) will be performed. (HIGH: no burst chop, LOW: burst chopped). See command truth table for details.



Symbol	Type	Function
/RESET	Input	Input Reset: /RESET is an active LOW CMOS input referenced to VSS. The /RESET input receiver is a CMOS input defined as a rail-to-rail signal with DC HIGH $\geq 0.8 \times V_{DD}$ and DC LOW $\leq 0.2 \times V_{DDQ}$. /RESET assertion and desassertion are asynchronous.
DQ0~ DQ15	I/O	Data Input/ Output: Bi-directional data bus.
UDQS, /UDQS LDQS, /LDQS	I/O	Data Strobe: Output with read data, input with write data. Edge-aligned with read data, centered in write data. DDR3/L SDRAM supports differential data strobe only and does not support single-ended.
VDDQ	Supply	DQ Power Supply: 1.35V - 0.065/+0.1V or 1.5V +/- 0.075V
VSSQ	Supply	DQ Ground
VDD	Supply	Power Supply: 1.35V -0.065/+0.1V or 1.5V +/- 0.075V
VSS	Supply	Ground
VREFDQ	Reference	Reference voltage for DQ Pins
VREFCA	Reference	Reference voltage for Command, Control, and Address Pins
ZQ	Reference	Reference Pin for ZQ calibration: series 240 Ω resistor to VSS
NC	-	Not Connected Internally.

Note: Input only pins (BA0-BA2, A0-A15, /RAS, /CAS, /WE, /CS, CKE, ODT and /RESET) do not supply termination.



Absolute Maximum Rating

Symbol	Item	Rating		Units
VIN, VOUT	Input, Output Voltage	-0.4 ~ +1.975		V
VDD	Power Supply Voltage	-0.4 ~ +1.975		V
VDDQ	Power Supply Voltage	-0.4 ~ +1.975		V
TOP	Operating Temperature Range	Commercial	0~ +95	°C
		Industrial	-40~ +95	°C
		Extreme	-55~ +125	°C
TSTG	Storage Temperature Range	-55 ~ +125		°C
VREFCA	Reference Voltage for Control	-0.4 ~ 0.6 × VDD		V
VREFDQ	Reference Voltage for DQ	-0.4 ~ 0.6 × VDDQ		V

Note: Caution Exposing the device to stress above those listed in Absolute Maximum Ratings could cause permanent damage. The device is not meant to be operated under conditions outside the limits described in the operational section of this specification.

Recommended DC Operating Conditions

(VDD, VDDQ = 1.35V -0.065/+0.1V)

Symbol	Parameter & Test Conditions	-107	-125	Units
		Max		
IDD ₁	Operating One Bank Active-Read-Pre-charge Current: CKE: High; External clock: On; t _{CK} , nRC, nRAS, nRCD, CL: see timing used table; BL: 81; AL: 0; /CS: High between ACT, RD and PRE; Command, Address, Data IO: partially toggling; DM: stable at 0; Bank Activity: Cycling with one bank active at a time; Output Buffer and RTT: Enabled in Mode Registers; ODT Signal: stable at 0	46	45	mA
IDD _{2P1}	Pre-charge Power-Down Current Fast Exit: CKE: Low; External clock: On; t _{CK} , CL: see timing used table; BL: 8; AL: 0;/CS: stable at 1; Command, Address: stable at 0; Data IO: FLOATING; DM: stable at 0; Bank Activity: all banks closed; Output Buffer and RTT: Enabled in Mode Registers; ODT Signal: stable at 0; Pre-charge Power Down Mode: Pre-charge	11	11	mA
IDD _{2N}	Pre-charge Standby Current: CKE: High; External clock: On; t _{CK} , CL: see timing used table; BL: 8; AL: 0;/CS: stable at 1; Command, Address: partially toggling; Data IO: FLOATING; DM: stable at 0; Bank Activity: all banks closed; Output Buffer and RTT: Enabled in Mode Registers; ODT Signal: stable at 0	15	15	mA
IDD _{3P}	Active Power-Down Current: CKE: Low; External clock: On; t _{CK} , CL: see timing used table; BL: 8; AL: 0;/CS: stable at 1; Command, Address: stable at 0; Data IO: FLOATING; DM: stable at 0; Bank Activity: all banks open; Output Buffer and RTT: Enabled in Mode Registers; ODT Signal: stable at 0	16	16	mA
IDD _{4W}	Operating Burst Write Current: CKE: High; External clock: On; t _{CK} , CL: see timing used table; BL: 8; AL: 0;/CS: High between WR; Command, Address: partially toggling; Data IO: seamless write data burst with different data between one burst and the next one; DM: stable at 0; Bank Activity: all banks open, WR commands cycling through banks: 0,0,1,1,2,2,...; Output Buffer and RTT: Enabled in Mode Registers; ODT Signal: stable at HIGH	115	105	mA



Symbol	Parameter & Test Conditions	-107	-125	Units
		Max		
IDD _{5B}	Burst Refresh Current: CKE: High; External clock: On; t _{CK} , CL, nRFC: see timing used table; BL: 8; AL: 0; /CS: High between REF; Command, Address: partially toggling; Data IO: FLOATING; DM: stable at 0; Bank Activity: REF command every nRFC; Output Buffer and RTT: Enabled in Mode Registers; ODT Signal: stable at 0	140	130	mA
IDD ₆	Self-Refresh Current: Normal Temperature Range; T _C : 0- 85°C; Auto Self-Refresh (ASR): Disabled; Self-Refresh Temperature Range (SRT): Normal; CKE: Low; External clock: Off; CK and /CK: LOW; CL: see timing used table; BL: 8; AL: 0; CS, Command, Address, Data IO: FLOATING; DM: stable at 0; Bank Activity: Self-Refresh operation; Output Buffer and RTT: Enabled in Mode Registers; ODT Signal: FLOATING	12	12	mA
IDD ₇	Operating Bank Interleave Read Current; CKE: High; External clock: On; t _{CK} , nRC, nRAS, nRCD, nRRD, nFAW, CL: see timing used table; BL: 8; AL: CL-1; CS: High between ACT and RDA; Command, Address: partially toggling; Data IO: read data bursts with different data between one burst and the next one; DM: stable at 0; Bank Activity: two times interleaved cycling through banks (0, 1, ...7) with different addressing; Output Buffer and RTT: Enabled in Mode Registers; ODT Signal: stable at 0	150	140	mA

Note 1: Burst Length: BL8 fixed by MRS: set MR0 A[1,0]=00B

Note 2: Output Buffer Enable: set MR1 A[12] = 0B; set MR1 A[5, 1] = 01B; RTT_Nom enable: set MR1 A[9, 6, 2] = 011B; RTT_Wr enable: set MR2 A[10, 9] = 10B

Note 3: Pre-charge Power Down Mode: set MR0 A12 = 0B for Slow Exit or MR0 A12 = 1B for Fast Exit

Note 4: Auto Self-Refresh (ASR): set MR2 A6 = 0B to disable or 1B to enable feature

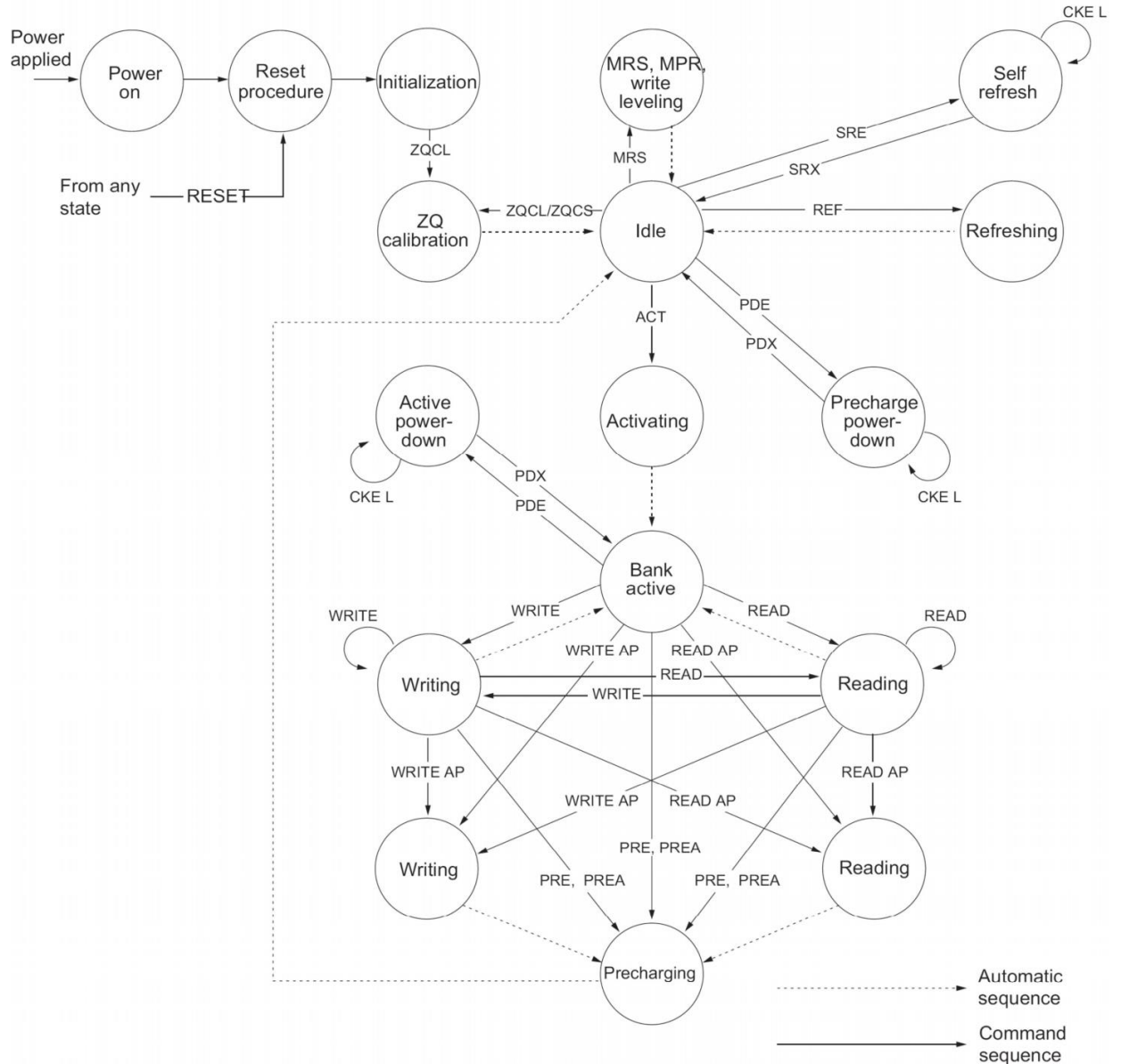
Note 5: Self-Refresh Temperature Range (SRT): set MR2 A7 = 0B for normal or 1B for extended temperature range

Note 6: Refer to DRAM supplier data sheet and/or SPD to determine if optional features or requirements are supported by DDR3/L SDRAM

Note 7: Read Burst type: Nibble Sequential, set MR0 A[3] =0B



Simplified State Diagram



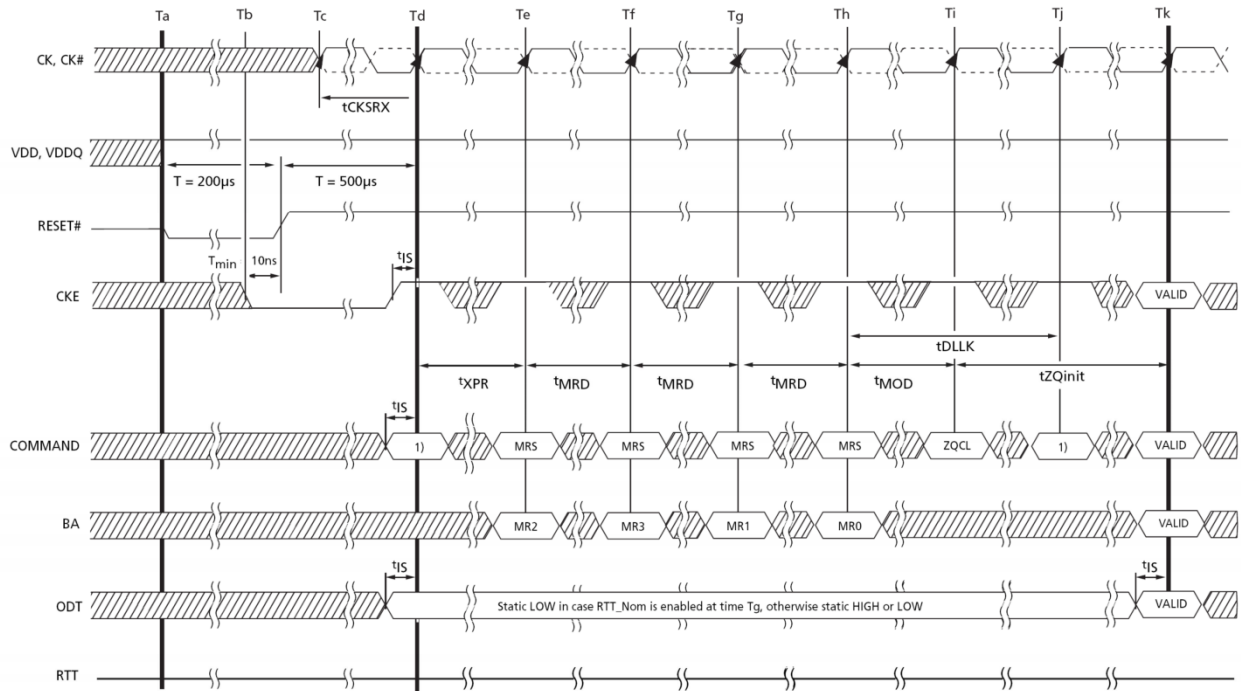
ACT = ACTIVATE
 MPR = Multipurpose register
 MRS = Mode register set
 PDE = Power-down entry
 PDX = Power-down exit
 PRE = PRECHARGE

PREA = PRECHARGE ALL
 READ = RD, RDS4, RDS8
 READ AP = RDAP, RDAPS4, RDAPS8
 REF = REFRESH
 RESET = START RESET PROCEDURE
 SRE = Self refresh entry

SRX = Self refresh exit
 WRITE = WR, WRS4, WRS8
 WRITE AP = WRAP, WRAPS4, WRAPS8
 ZQCL = ZQ LONG CALIBRATION
 ZQCS = ZQ SHORT CALIBRATION



Reset and Power up Initialization Sequence



NOTE 1. From time point "Td" until "Tk" NOP or DES commands must be applied between MRS and ZQCL commands.

}} TIME BREAK ▨ DON'T CARE

Mode Register Setting

Mode Register 0 (MR0)

The base register, mode register 0 (MR0), is used to define various DDR3/L SDRAM modes of operation. These definitions include the selection of a burst length, burst type, CAS latency, operating mode, DLL RESET, write recovery, and pre-charge power-down mode.

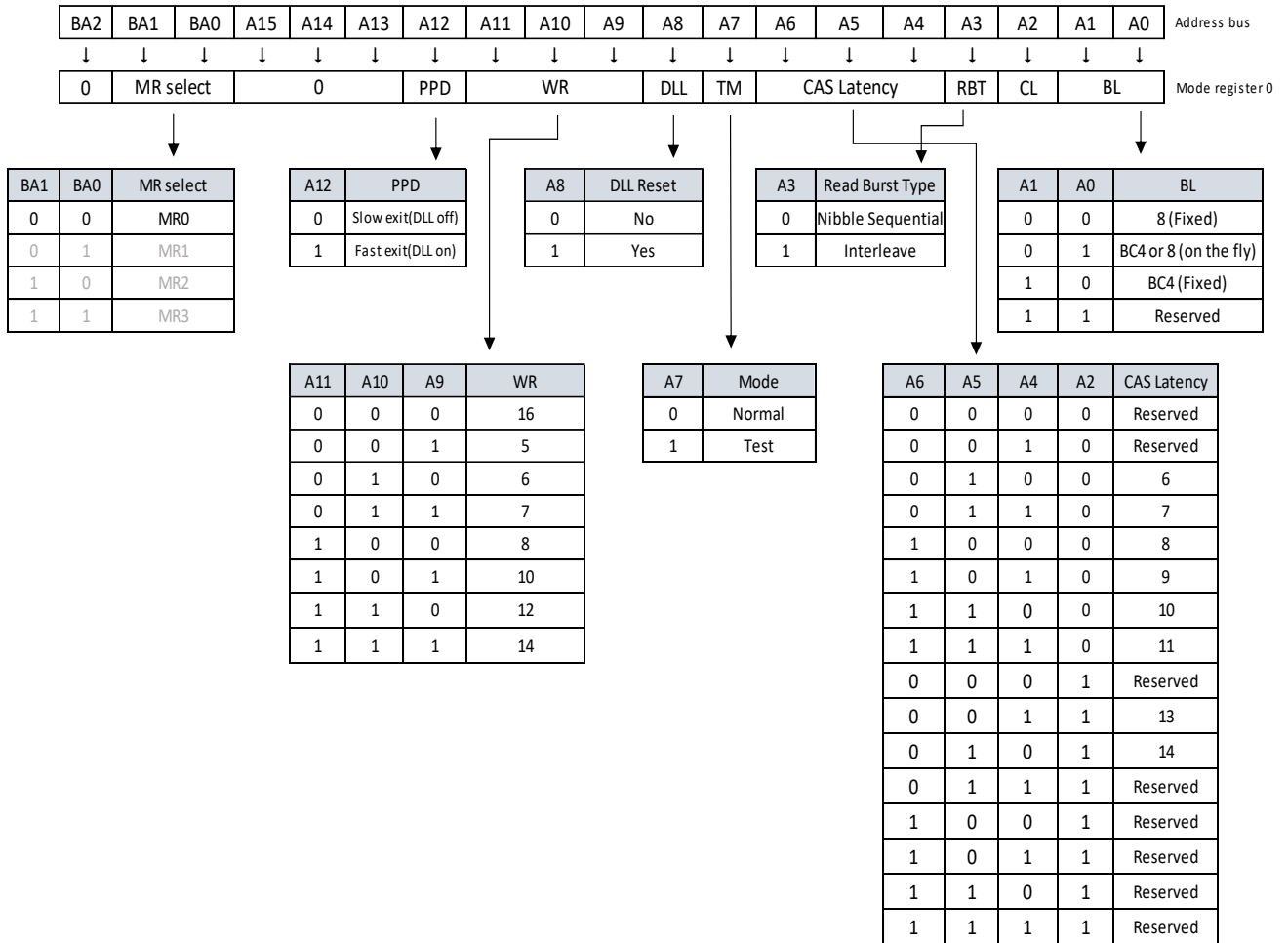
Burst Length

Burst length is defined by MR0[1:0]. Read and write accesses to the DDR3/L SDRAM are burst-oriented, with the burst length being programmable to 4 (chop) mode, 8 (fixed) mode, or selectable using A12 during a READ/WRITE command (on-the-fly). The burst length determines the maximum number of column locations that can be accessed for a given READ or WRITE command. When MR0[1:0] is set to 01 during a READ/WRITE command, if A12 = 0, then BC4 mode is selected. If A12 = 1, then BL8 mode is selected. Specific timing diagrams, and turnaround between READ/WRITE, are shown in the READ/WRITE sections of this document.

When a READ or WRITE command is issued, a block of columns equal to the burst length is effectively selected. All accesses for that burst take place within this block, meaning that the burst will wrap within the block if a boundary is reached. The block is uniquely selected by A[i:2] when the burst length is set to 4 and by A[i:3] when the burst length is set to 8, where Ai is the most significant column address bit for a given configuration. The remaining (least significant) address bit(s) is (are) used to select the starting location within the block. The programmed burst length applies to both READ and WRITE bursts.



Mode Register 0 (MR0) Definitions



Note:

- MR0[18, 15:13, 7] are reserved for future use and must be programmed to 0

Burst Type

Accesses within a given burst can be programmed to either a sequential or an interleaved order. The burst type is selected via MR0[3]. The ordering of accesses within a burst is determined by the burst length, the burst type, and the starting column address. DDR3/L only supports 4-bit burst chop and 8-bit burst access modes. Full interleave address ordering is supported for READs, while WRITES are restricted to nibble (BC4) or word (BL8) boundaries.



Burst Order

Burst Length	READ/ WRITE	Starting Column Address (A[2, 1, 0])	Burst Type = Sequential (Decimal)	Burst Type = Interleaved (Decimal)	Notes
4(chop)	READ	0 0 0	0, 1, 2, 3, Z, Z, Z, Z	0, 1, 2, 3, Z, Z, Z, Z	1, 2
		0 0 1	1, 2, 3, 0, Z, Z, Z, Z	1, 0, 3, 2, Z, Z, Z, Z	1, 2
		0 1 0	2, 3, 0, 1, Z, Z, Z, Z	2, 3, 0, 1, Z, Z, Z, Z	1, 2
		0 1 1	3, 0, 1, 2, Z, Z, Z, Z	3, 2, 1, 0, Z, Z, Z, Z	1, 2
		1 0 0	4, 5, 6, 7, Z, Z, Z, Z	4, 5, 6, 7, Z, Z, Z, Z	1, 2
		1 0 1	5, 6, 7, 4, Z, Z, Z, Z	5, 4, 7, 6, Z, Z, Z, Z	1, 2
		1 1 0	6, 7, 4, 5, Z, Z, Z, Z	6, 7, 4, 5, Z, Z, Z, Z	1, 2
		1 1 1	7, 4, 5, 6, Z, Z, Z, Z	7, 4, 5, 6, Z, Z, Z, Z	1, 2
	WRITE	0 V V	0, 1, 2, 3, X, X, X, X	0, 1, 2, 3, X, X, X, X	1, 3, 4
1 V V		4, 5, 6, 7, X, X, X, X	4, 5, 6, 7, X, X, X, X	1, 3, 4,	
8 (fixed)	READ	0 0 0	0, 1, 2, 3, 4, 5, 6, 7	0, 1, 2, 3, 4, 5, 6, 7	1
		0 0 1	1, 2, 3, 0, 5, 6, 7, 4	1, 0, 3, 2, 5, 4, 7, 6	1
		0 1 0	2, 3, 0, 1, 6, 7, 4, 5	2, 3, 0, 1, 6, 7, 4, 5	1
		0 1 1	3, 0, 1, 2, 7, 4, 5, 6	3, 2, 1, 0, 7, 6, 5, 4	1
		1 0 0	4, 5, 6, 7, 0, 1, 2, 3	4, 5, 6, 7, 0, 1, 2, 3	1
		1 0 1	5, 6, 7, 4, 1, 2, 3, 0	5, 4, 7, 6, 1, 0, 3, 2	1
		1 1 0	6, 7, 4, 5, 2, 3, 0, 1	6, 7, 4, 5, 2, 3, 0, 1	1
		1 1 1	7, 4, 5, 6, 3, 0, 1, 2	7, 6, 5, 4, 3, 2, 1, 0	1
	WRITE	V V V	0, 1, 2, 3, 4, 5, 6, 7	0, 1, 2, 3, 4, 5, 6, 7	1, 3

Notes:

1. Internal READ and WRITE operations start at the same point in time for BC4 as they do for BL8.
2. Z = Data and strobe output drivers are in tristate.
3. V = A valid logic level (0 or 1), but the respective input buffer ignores level-on input pins.
4. X = "Don't Care."

DLL Reset

DLL RESET is defined by MR0[8]. Programming MR0[8] to 1 activates the DLL RESET function. MR0[8] is self-clearing, meaning it returns to a value of 0 after the DLL RESET function has been initiated.

Anytime the DLL RESET function is initiated, CKE must be HIGH and the clock held stable for 256 (tDLLK) clock cycles before a READ command can be issued. This is to allow time for the internal clock to be synchronized with the external clock. Failing to wait for synchronization can result in invalid output timing specifications, such as tDQSCK timings.

Write Recovery

WRITE recovery time is defined by MR0[11:9]. Write recovery values of 5, 6, 7, 8, 10, or 12 can be used by programming MR0[11:9]. The user is required to program the correct value of write recovery, which is calculated by dividing tWR (ns) by tCK (ns) and rounding up a non-integer value to the next integer:

$$WR \text{ (cycles)} = \text{roundup} (tWR \text{ (ns)} / tCK \text{ (ns)})$$

Pre-charge Power-Down (Pre-charge PD)

The pre-charge power-down (pre-charge PD) bit applies only when pre-charge power-down mode is being used. When MR0[12] is set to 0, the DLL is off during pre-charge power-down, providing a lower standby current mode; however, tXPDLL must be satisfied when exiting. When MR0[12] is set to 1, the DLL continues to run during pre-charge power-down mode to enable a faster exit of



pre-charge power-down mode; however, tXP must be satisfied when exiting.

CAS Latency (CL)

CAS latency (CL) is defined by MR0[6:4]. CAS latency is the delay, in clock cycles, between the internal READ command and the availability of the first bit of output data. CL can be set to 5 through 14. DDR3/L SDRAM do not support half-clock latencies.

If an internal READ command is registered at clock edge n, and the CAS latency is m clocks, the data will be available nominally coincident with clock edge n + m. See Speed Bin Tables for the CLs supported at various operating frequencies.

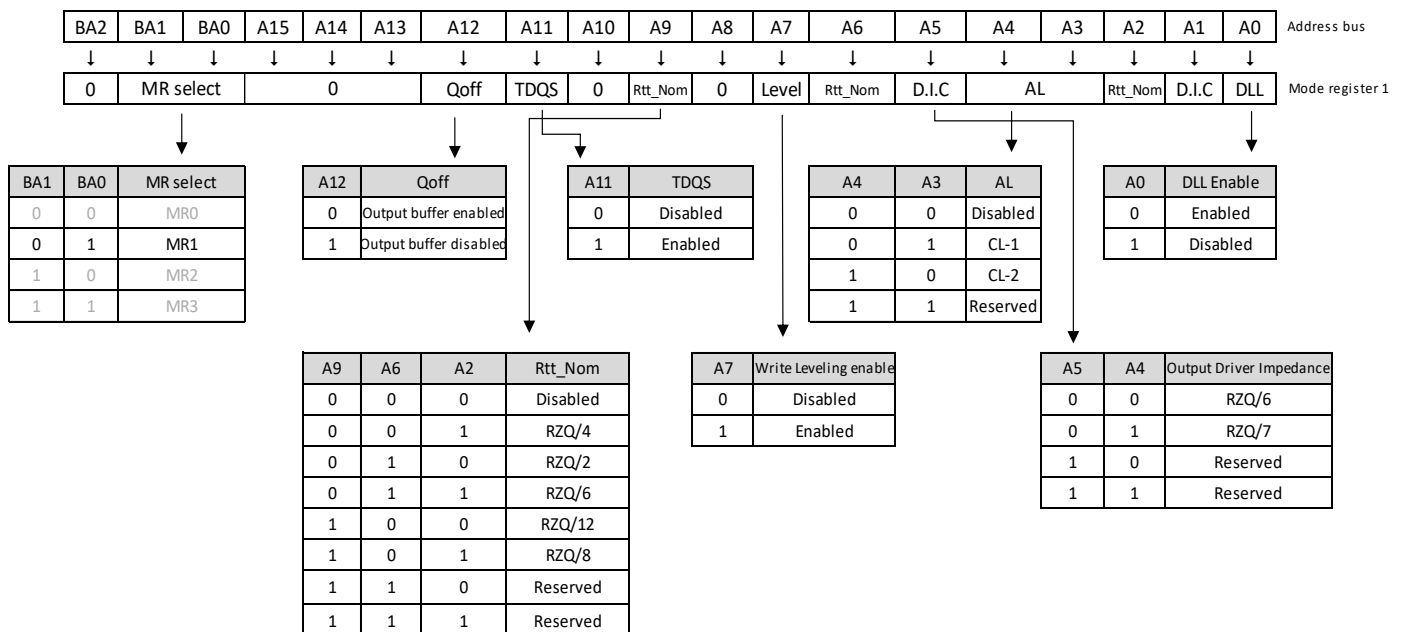
Mode Register 1 (MR1)

The mode register 1 (MR1) controls additional functions and features not available in the other mode registers: Q OFF (OUTPUT DISABLE), TDQS (for the x8 configuration only), DLL ENABLE/DLL DISABLE, RTT,nom value (ODT), WRITE LEVELING, POSTED.

CAS ADDITIVE latency, and OUTPUT DRIVE STRENGTH. These functions are controlled via the bits. The MR1 register is programmed via the MRS command and retains the stored information until it is reprogrammed, until /RESET goes LOW, or until the device loses power. Reprogramming the MR1 register will not alter the contents of the memory array, provided it is performed correctly.

The MR1 register must be loaded when all banks are idle and no bursts are in progress. The controller must satisfy the specified timing parameters tMRD and tMOD before initiating a subsequent operation.

Mode Register 1 (MR1) Definition



Notes:

- MR1[18, 15:13, 10, 8] are reserved for future use and must be programmed to 0.
- During write leveling, if MR1[7] and MR1[12] are 1, then all RTT,nom values are available for use.
- During write leveling, if MR1[7] is a 1, but MR1[12] is a 0, then only RTT,nom write values are available for use.



DLL Enable/ DLL Disable

The DLL may be enabled or disabled by programming MR1[0] during the LOAD MODE command. The DLL must be enabled for normal operation. DLL enable is required during power-up initialization and upon returning to normal operation after having disabled the DLL for the purpose of debugging or evaluation. Enabling the DLL should always be followed by resetting the DLL using the appropriate LOAD MODE command.

If the DLL is enabled prior to entering self refresh mode, the DLL is automatically disabled when entering SELF REFRESH operation and is automatically re-enabled and reset upon exit of SELF REFRESH operation. If the DLL is disabled prior to entering self refresh mode, the DLL remains disabled even upon exit of SELF REFRESH operation until it is re-enabled and reset.

The DRAM is not tested to check normal mode timings or functionality when the DLL is disabled. An attempt has been made to have the DRAM operate in the normal mode where reasonably possible when the DLL has been disabled; however, by industry standard, a few known exceptions are defined:

- ODT is not allowed to be used
- The output data is no longer edge-aligned to the clock
- CL and CWL can only be six clocks

When the DLL is disabled, timing and functionality can vary from the normal operation specifications when the DLL is enabled. Disabling the DLL also implies the need to change the clock frequency.

Output Drive Strength

The DDR3/L SDRAM uses a programmable impedance output buffer. The drive strength mode register setting is defined by MR1[5, 1]. RZQ/7 (34Ω [NOM]) is the primary output driver impedance setting for DDR3/L SDRAM devices. To calibrate the output driver impedance, an external precision resistor (RZQ) is connected between the ZQ ball and VSSQ. The value of the resistor must be 240Ω ±1%.

The output impedance is set during initialization. Additional impedance calibration updates do not affect device operation, and all data sheet timings and current specifications are met during an update. To meet the 34Ω specification, the output drive strength must be set to 34Ω during initialization. To obtain a calibrated output driver impedance after power-up, the DDR3/L SDRAM needs a calibration command that is part of the initialization and reset procedure.

Output Enable/ Disable

The OUTPUT ENABLE function is defined by MR1[12]. When enabled (MR1[12] = 0), all outputs (DQ, DQS, /DQS) function when in the normal mode of operation. When disabled (MR1[12] = 1), all DDR3/L SDRAM outputs (DQ and DQS, /DQS) are tri-stated. The output disable feature is intended to be used during IDD characterization of the READ current and during tDQSS margining (write leveling) only.

TDQS Enable

Termination data strobe (TDQS) is a feature of the x8 DDR3/L SDRAM configuration that provides termination resistance (RTT) and may be useful in some system configurations. TDQS is not supported in x4 or x16 configurations. When enabled via the mode register (MR1[11]), the RTT that is applied to DQS and /DQS is also applied to TDQS and /TDQS. In contrast to the RDQS function of DDR2 SDRAM, DDR3/L's TDQS provides the termination resistance RTT only. The OUTPUT DATA STROBE function of RDQS is not provided by TDQS; thus, RON does not apply to TDQS and /TDQS. The TDQS and DM functions share the same ball. When the TDQS function is enabled via the mode register, the DM function is not supported. When the TDQS function is disabled, the DM function is provided, and the /TDQS ball is not used. The TDQS function is available in the x8 DDR3/L SDRAM configuration only and must be disabled via the mode register for the x4 and x16 configurations.



On-Die Termination

ODT resistance RTT_{nom} is defined by MR1[9, 6, 2]. The RTT termination value applies to the DQ, DM, DQS, /DQS, and TDQS, /TDQS balls. DDR3/L supports multiple RTT termination values based on RZQ/n where n can be 2, 4, 6, 8, or 12 and RZQ is 240Ω.

Unlike DDR2, DDR3/L ODT must be turned off prior to reading data out and must remain off during a READ burst. RTT_{nom} termination is allowed any time after the DRAM is initialized, calibrated, and not performing read access, or when it is not in self refresh mode. Additionally, write accesses with dynamic ODT (RTT(WR)) enabled temporarily replaces RTT_{nom} with RTT(WR).

The actual effective termination, RTT(EFF), may be different from the RTT targeted due to nonlinearity of the termination. For RTT(EFF) values and calculations (see On-Die Termination (ODT)). The ODT feature is designed to improve signal integrity of the memory channel by enabling the DDR3/L SDRAM controller to independently turn on/off ODT for any or all devices. The ODT input control pin is used to determine when RTT is turned on (ODTL on) and off (ODTL off), assuming ODT has been enabled via MR1[9, 6, 2]. Timings for ODT are detailed in On-Die Termination (ODT).

Write Leveling

The WRITE LEVELING function is enabled by MR1[7]. Write leveling is used (during initialization) to deskew the DQS strobe to clock offset as a result of fly-by topology designs. For better signal integrity, The MKR3128M1688MBE/SBD adopted fly-by topology for the commands, addresses, control signals, and clocks. The fly-by topology benefits from a reduced number of stubs and their lengths. However, fly-by topology induces flight time skews between the clock and DQS strobe (and DQ) at each DRAM DQ byte on the MKR3128M1688MBE/SBD. Controllers will have a difficult time maintaining tDQSS, tDSS, and tDSH specifications without supporting write leveling in systems which use fly-by topology.

Posted CAS Additive Latency

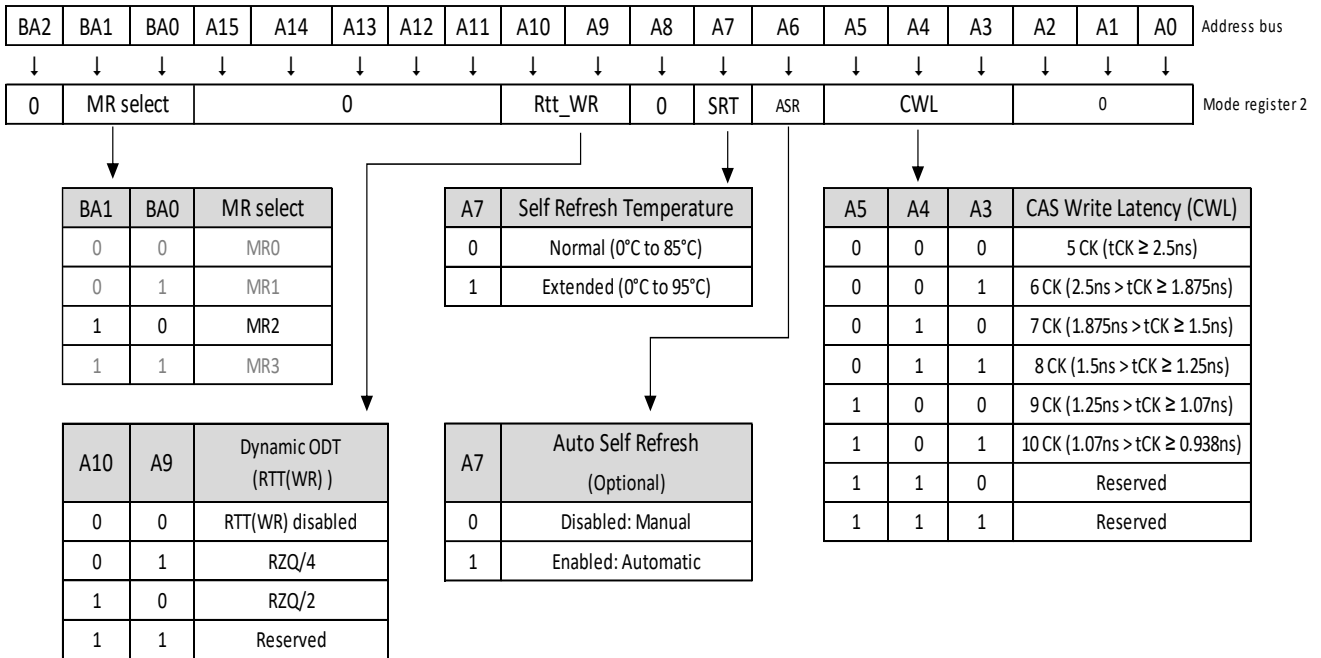
POSTED CAS ADDITIVE latency (AL) is supported to make the command and data bus efficient for sustainable bandwidths in DDR3/L SDRAM. MR1[4, 3] define the value of AL. MR1[4, 3] enable the user to program the DDR3/L SDRAM with AL = 0, CL - 1, or CL - 2.

Mode Register 2 (MR2)

The mode register 2 (MR2) controls additional functions and features not available in the other mode registers. These additional functions are CAS WRITE latency (CWL), AUTO SELF REFRESH (ASR), SELF REFRESH TEMPERATURE (SRT), and DYNAMIC ODT (RTT(WR)). The MR2 is programmed via the MRS command and will retain the stored information until it is programmed again or until the device loses power. Reprogramming the MR2 register will not alter the contents of the memory array, provided it is performed correctly. The MR2 register must be loaded when all banks are idle and no data bursts are in progress, and the controller must wait the specified time tMRD and tMOD before initiating a subsequent operation.



Mode Register 2 (MR2) Definition



Note:

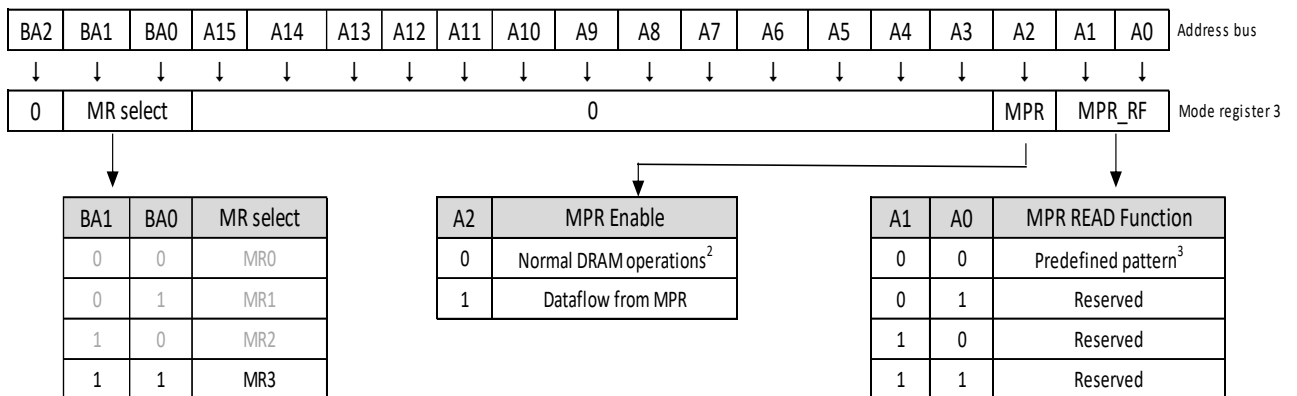
- MR2[18, 15:11, 8, and 2:0] are reserved for future use and must all be programmed to 0.

Mode Register 3 (MR3)

The mode register 3 (MR3) controls additional functions and features not available in the other mode registers. Currently defined is the MULTIPURPOSE REGISTER (MPR). This function is controlled via the bits. The MR3 is programmed via the LOAD MODE command and retains the stored information until it is programmed again or until the device loses power. Reprogramming the MR3 register will not alter the contents of the memory array, provided it is performed correctly. The MR3 register must be loaded when all banks are idle and no data bursts are in progress, and the controller must wait the specified time tMRD and tMOD before initiating a subsequent operation.



Mode Register 3 (MR3) Definition



Notes :

1. MR3[18 and 15:3] are reserved for future use and must all be programmed to 0.
2. When MPR control is set for normal DRAM operation, MR3[1, 0] will be ignored.
3. Intended to be used for READ synchronization.

Multi Purpose Register (MPR)

The Multi Purpose Register (MPR) function is used to Read out a predefined system timing calibration bit sequence. To enable the MPR, a MODE Register Set (MRS) command must be issued to MR3 Register with bit A2 = 1. Prior to issuing the MRS command, all banks must be in the idle state (all banks pre-charged and tRP met). Once the MPR is enabled, any subsequent RD or RDA commands will be redirected to the Multi Purpose Register. When the MPR is enabled, only RD or RDA commands are allowed until a subsequent MRS command is issued with the MPR disabled (MR3 bit A2 = 0). Power-down mode, self-refresh and any other non-RD/RDA command is not allowed during MPR enable mode. The RESET function is supported during MPR enable mode.



DDR3/L-1600MHz Speed Bins

Speed Bin	DDR3/L-1600				
CL-trCD-trP	11-11-11				
Parameter	Symbol	Min	Max	Unit	
Internal read command to first data	t ^{AA}	13.75	-	ns	
ACT to internal read or write delay time	t ^{RCD}	13.75	-	ns	
PRE command period	t ^{RP}	13.75	-	ns	
ACT to ACT or REF command period	t ^{RC}	48.75	-	ns	
ACT to PRE command period	t ^{RAS}	35	9 x t ^{REFI}	ns	
CL=5	CWL=5	t ^{CK(AVG)}	3.0	3.3	ns
	CWL=6, 7, 8	t ^{CK(AVG)}	Reserved	Reserved	ns
CL=6	CWL=5	t ^{CK(AVG)}	2.5	3.3	ns
	CWL=6	t ^{CK(AVG)}	Reserved	Reserved	ns
	CWL=7, 8	t ^{CK(AVG)}	Reserved	Reserved	ns
CL=7	CWL=5	t ^{CK(AVG)}	Reserved	Reserved	ns
	CWL=6	t ^{CK(AVG)}	1.875	<2.5	ns
	CWL=7	t ^{CK(AVG)}	Reserved	Reserved	ns
	CWL=8	t ^{CK(AVG)}	Reserved	Reserved	ns
CL=8	CWL=5	t ^{CK(AVG)}	Reserved	Reserved	ns
	CWL=6	t ^{CK(AVG)}	1.875	<2.5	ns
	CWL=7	t ^{CK(AVG)}	Reserved	Reserved	ns
	CWL=8	t ^{CK(AVG)}	Reserved	Reserved	ns
CL=9	CWL=5, 6	t ^{CK(AVG)}	Reserved	Reserved	ns
	CWL=7	t ^{CK(AVG)}	1.5	<1.875	ns
	CWL=8	t ^{CK(AVG)}	Reserved	Reserved	ns
CL=10	CWL=5, 6	t ^{CK(AVG)}	Reserved	Reserved	ns
	CWL=7	t ^{CK(AVG)}	1.5	<1.875	ns
	CWL=8	t ^{CK(AVG)}	Reserved	Reserved	ns
CL=11	CWL=5, 6, 7	t ^{CK(AVG)}	Reserved	Reserved	ns
	CWL=8	t ^{CK(AVG)}	1.25	<1.5	ns
Supported CL Settings		5,6,7,8, 9,10,11			nCK
Supported CWL Settings		5,6,7,8			nCK



DDR3/L-1866MHz Speed Bins

Speed Bin	DDR3/L-1866				
CL-tRCD-tRP	13-13-13				
Parameter	Symbol	Min	Max	Unit	
Internal read command to first data	t _{AA}	13.91	20	ns	
ACT to internal read or write delay time	t _{RCD}	13.91	-	ns	
PRE command period	t _{RP}	13.91	-	ns	
ACT to ACT or REF command period	t _{RC}	47.91	-	ns	
ACT to PRE command period	t _{RAS}	34	9 x t _{REFI}	ns	
CL=5	CWL=5	t _{CK(AVG)}	3.0	3.3	ns
	CWL=6, 7, 8	t _{CK(AVG)}	Reserved	Reserved	ns
CL=6	CWL=5	t _{CK(AVG)}	2.5	3.3	ns
	CWL=6, 7, 8, 9	t _{CK(AVG)}	Reserved	Reserved	ns
CL=7	CWL=5, 7, 8, 9	t _{CK(AVG)}	Reserved	Reserved	ns
	CWL=6	t _{CK(AVG)}	1.875	<2.5	ns
CL=8	CWL=5, 8, 9	t _{CK(AVG)}	Reserved	Reserved	ns
	CWL=6	t _{CK(AVG)}	1.875	<2.5	ns
	CWL=7	t _{CK(AVG)}	Reserved	Reserved	ns
CL=9	CWL=5, 6, 8, 9	t _{CK(AVG)}	Reserved	Reserved	ns
	CWL=7	t _{CK(AVG)}	1.5	<1.875	ns
CL=10	CWL=5, 6, 9	t _{CK(AVG)}	Reserved	Reserved	ns
	CWL=7	t _{CK(AVG)}	1.5	<1.875	ns
	CWL=8	t _{CK(AVG)}	Reserved	Reserved	ns
CL=11	CWL=5, 6, 7	t _{CK(AVG)}	Reserved	Reserved	ns
	CWL=8	t _{CK(AVG)}	1.25	<1.5	ns
	CWL=9	t _{CK(AVG)}	Reserved	Reserved	ns
CL=12	CWL=5, 6, 7, 8	t _{CK(AVG)}	Reserved	Reserved	ns
	CWL=9	t _{CK(AVG)}	Reserved	Reserved	ns
CL=13	CWL=5, 6, 7, 8	t _{CK(AVG)}	Reserved	Reserved	ns
	CWL=9	t _{CK(AVG)}	1.07	<1.25	ns
Supported CL Settings		5,6,7,8, 9,10,11,13			nCK
Supported CWL Settings		5,6,7,8,9			nCK



Electrical Characteristics and AC Operating Conditions -1

Parameter		Symbol	DDR3/L-1866		DDR3/L-1600		Unit	Notes
			Min	Max	Min	Max		
Clock Timing								
Clock period average: DLL disable mode	T _C = -55°C to 85°C	t ^{CK} (DLL_DIS)	8	7800	8	7800	ns	9, 42
	T _C = >85°C to 95°C		8	3900	8	3900	ns	42
	T _C = >95°C to 105°C		8	3900	8	3900	ns	42
	T _C = >105°C to 125°C		8	3900	8	3900	ns	42
Clock period average: DLL enable mode		t ^{CK} (AVG)	See Speed Bin Tables for t ^{CK} range allowed				ns	10, 11
High pulse width average		t ^{CH} (AVG)	0.47	0.53	0.47	0.53	CK	12
Low pulse width average		t ^{CL} (AVG)	0.47	0.53	0.47	0.53	CK	12
Clock period jitter	DLL locked	t ^{JITper}	-60	60	-70	70	ps	13
	DLL locking	t ^{JITper,lck}	-50	50	-60	60	ps	13
Clock absolute period		t ^{CK} (ABS)	MIN = t ^{CK} (AVG) MIN + t ^{JITper} MIN; MAX = t ^{CK} (AVG) MAX + t ^{JITper} MAX				ps	
Clock absolute high pulse width		t ^{CH} (ABS)	0.43	-	0.43	-	t ^{CK} (AVG)	14
Clock absolute low pulse width		t ^{CL} (ABS)	0.43	-	0.43	-	t ^{CK} (AVG)	15
Cycle-to-cycle jitter	DLL locked	t ^{JITcc}	120		140		ps	16
	DLL locking	t ^{JITcc,lck}	100		120		ps	16



Electrical characteristics and AC timing specification -2

Parameter		Symbol	DDR3/L-1866		DDR3/L-1600		Unit	Notes
			Min	Max	Min	Max		
Cumulative error across	2 cycles	^t ERR2per	-88	88	-103	103	ps	17
	3 cycles	^t ERR3per	-105	105	-122	122	ps	17
	4 cycles	^t ERR4per	-117	117	-136	136	ps	17
	5 cycles	^t ERR5per	-126	126	-147	147	ps	17
	6 cycles	^t ERR6per	-133	133	-155	155	ps	17
	7 cycles	^t ERR7per	-139	139	-163	163	ps	17
	8 cycles	^t ERR8per	-145	145	-169	169	ps	17
	9 cycles	^t ERR9per	-150	150	-175	175	ps	17
	10 cycles	^t ERR10per	-154	154	-180	180	ps	17
	11 cycles	^t ERR11per	-158	158	-184	184	ps	17
	12 cycles	^t ERR12per	-161	161	-188	188	ps	17
		$n = 13, 14 \dots 49, 50$ cycles	^t ERR n per	^t ERR n per MIN = $(1 + 0.68\ln[n]) \times \text{JITper MIN}$ ^t ERR n per MAX = $(1 + 0.68\ln[n]) \times \text{JITper MAX}$				ps
DQ Input Timing								
Data setup time to DQS, /DQS	Base (specification)	^t DS (AC150)	-	-	10	-	ps	18, 19
	V _{REF} @ 1 V/ns		-	-	160	-	ps	19, 20
Data setup time to DQS, /DQS	Base (specification)	^t DS (AC135)	68	-	-	-	ps	18, 19
	V _{REF} @ 1 V/ns		135	-	-	-	ps	19, 20
Data hold time from DQS, /DQS	Base (specification)	^t DH (DC100)	70	-	45	-	ps	18, 19
	V _{REF} @ 1 V/ns		120	-	145	-	ps	19, 20
Minimum data pulse width		^t DIPW	320	-	360	-	ps	41
DQ Output Timing								
DQS, /DQS to DQ skew, per access		^t DQSQ	-	85	-	100	ps	
DQ output hold time from DQS, /DQS		^t QH	0.38	-	0.38	-	^t CK (AVG)	21
DQ Low-Z time from CK, /CK		^t LZDQ	-390	195	-450	225	ps	22, 23
DQ High-Z time from CK, /CK		^t HZDQ	-	195	-	225	ps	22, 23
DQ Strobe Input Timing								
DQS, /DQS rising to CK, /CK rising		^t DQSS	-0.27	0.27	-0.27	0.27	CK	25
DQS, /DQS differential input low pulse width		^t DQSL	0.45	0.55	0.45	0.55	CK	



Electrical characteristics and AC timing specification -3

Parameter	symbol	DDR3/L-1866		DDR3/L-1600		Unit	Notes	
		Min	Max	Min	Max			
DQS, /DQS differential input high pulse width	tDQSH	0.45	0.55	0.45	0.55	CK		
DQS, /DQS falling setup to CK, /CK rising	tDSS	0.18	-	0.18	-	CK	25	
DQS, /DQS falling hold from CK, /CK rising	tDSH	0.18	-	0.18	-	CK	25	
DQS, /DQS differential WRITE preamble	tWPRE	0.9	-	0.9	-	CK		
DQS, /DQS differential WRITE postamble	tWPST	0.3	-	0.3	-	CK		
DQ Strobe Output Timing								
DQS, /DQS rising to/from rising CK, /CK	tDQSCK	-195	195	-225	225	ps	23	
DQS, /DQS rising to/from rising CK, /CK when DLL is disabled	tDQSCK (DLL_DIS)	1	10	1	10	ns	26	
DQS, /DQS differential output high time	tQSH	0.40	-	0.40	-	CK	21	
DQS, /DQS differential output low time	tQSL	0.40	-	0.40	-	CK	21	
DQS, /DQS Low-Z time (RL - 1)	tLZDQS	-390	195	-450	225	ps	22, 23	
DQS, /DQS High-Z time (RL + BL/2)	tHZDQS	-	195	-	225	ps	22, 23	
DQS, /DQS differential READ preamble	tRPRE	0.9	Note 24	0.9	Note 24	CK	23, 24	
DQS, /DQS differential READ postamble	tRPST	0.3	Note 27	0.3	Note 27	CK	23, 27	
Command and Address Timing								
DLL locking time	tDLLK	512	-	512	-	CK	28	
CTRL, CMD, ADDR setup to CK, /CK	Base (specification)	tIS (AC175)	-	-	45	-	ps	29, 30, 44
	V _{REF} @ 1 V/ns		-	-	220	-	ps	20, 30
CTRL, CMD, ADDR setup to CK, /CK	Base (specification)	tIS (AC150)	-	-	170	-	ps	29, 30, 44
	V _{REF} @ 1 V/ns		-	-	320	-	ps	20, 30
CTRL, CMD, ADDR setup to CK, /CK	Base (specification)	tIS (AC135)	65	-	-	-	ps	29, 30, 44
	V _{REF} @ 1 V/ns		200	-	-	-	ps	20, 30
CTRL, CMD, ADDR setup to CK, /CK	Base (specification)	tIS (AC125)	150	-	-	-	ps	29, 30, 44
	V _{REF} @ 1 V/ns		275	-	-	-	ps	20, 30
CTRL, CMD, ADDR hold from CK, /CK	Base (specification)	tIH (DC100)	100	-	120	-	ps	29, 30
	V _{REF} @ 1 V/ns		200	-	220	-	ps	20, 30
Minimum CTRL, CMD, ADDR pulse width	tIPW	535	-	560	-	ps	41	
ACTIVATE to internal READ or WRITE delay	tRCD	See Speed Bin Tables for tRCD				ns	31	
PRE-CHARGE command period	tRP	See Speed Bin Tables for tRP				ns	31	
ACTIVATE-to-PRE-CHARGE command period	tRAS	See Speed Bin Tables for tRAS				ns	31, 32	
ACTIVATE-to-ACTIVATE command period	tRC	See Speed Bin Tables for tRC				ns	31, 43	



Electrical characteristics and AC timing specification -4

Parameter		Symbol	DDR3/L-1866		DDR3/L-1600		Unit	Notes
			Min	Max	Min	Max		
ACTIVATE-to-ACTIVATE Minimum command period	x4/x8 (1KB page size)	'RRD	MIN = greater of 4CK or 5ns		MIN = greater of 4CK or 6ns		CK	31
	x16(2KB page size)		MIN = greater of 4CK or 6ns		MIN = greater of 4CK or 7.5ns			
Four ACTIVATE windows	x4/x8 (1KB page size)	'FAW	27	-	30	-	ns	31
	x16(2KB page size)		35		40			
Write recovery time		'WR	MIN = 15ns; MAX = N/A				ns	31, 32,33
Delay from start of internal WRITE transaction to internal READ command		'WTR	MIN = greater of 4CK or 7.5ns; MAX = N/A				CK	31, 34
READ-to-PRE-CHARGE time		'RTP	MIN = greater of 4CK or 7.5ns; MAX = N/A				CK	31, 32
/CAS-to-/CAS command delay		'CCD	MIN = 4CK; MAX = N/A				CK	
Auto pre-charge write recovery + pre-charge time		'DAL	MIN = WR + 'RP/CK (AVG); MAX = N/A				CK	
MODE REGISTER SET command cycle time		'MRD	MIN = 4CK; MAX = N/A				CK	
MODE REGISTER SET command update delay		'MOD	MIN = greater of 12CK or 15ns; MAX = N/A				CK	
MULTIPURPOSE REGISTER READ burst end to mode register set for multipurpose register exit		'MPRR	MIN = 1CK; MAX = N/A				CK	
Calibration Timing								
ZQCL command: Long calibration time	POWER-UP and RESET operation	'ZQinit	MAX = N/A MIN = MAX(512nCK, 640ns)				CK	
	Normal operation	'ZQoper	MAX = N/A MIN = MAX(256nCK, 320ns)				CK	
ZQCS command: Short calibration time		'ZQCS	MAX = N/A MIN = MAX(64nCK, 80ns)				CK	
Initialization and Reset Timing								
Exit reset from CKE HIGH to a valid command		'XPR	MIN = greater of 5CK or 'RFC + 10ns; MAX = N/A				CK	
Begin power supply ramp to power supplies stable		'VDDPR	MIN = N/A; MAX = 200				ms	
/RESET LOW to power supplies stable		'RPS	MIN = 0; MAX = 200				ms	
/RESET LOW to I/O and R _{TT} High-Z		'IOZ	MIN = N/A; MAX = 20				ns	35



Electrical characteristics and AC timing specification -5

Parameter	Symbol	DDR3/L-1866		DDR3/L-1600		Unit	Notes
		Min	Max	Min	Max		
Refresh Timing							
REFRESH-to-ACTIVATE or REFRESH command period	t _{RFC}	MIN = 160; MAX = 70,200				ns	
Maximum refresh period	T _C ≤ 85°C	-	64 (1X)			ms	36
	T _C > 85°C		32 (2X)			ms	36
	T _C > 105°C		8 (8X)			ms	36
Maximum average periodic refresh	T _C ≤ 85°C	t _{REFI}	7.8 (64ms/8192)			µs	36
	T _C > 85°C		3.9 (32ms/8192)			µs	36
	T _C > 105°C		0.977 (8ms/8192)			µs	36
Self Refresh Timing							
Exit self refresh to commands not requiring a locked DLL	t _{XS}	MIN = greater of 5CK or t _{RFC} + 10ns; MAX = N/A				CK	
Exit self refresh to commands requiring a locked DLL	t _{XSDLL}	MIN = t _{DLLK} (MIN); MAX = N/A				CK	28
Minimum CKE low pulse width for self refresh entry to self refresh exit timing	t _{CKESR}	MIN = t _{CKE} (MIN) + CK; MAX = N/A				CK	
Valid clocks after self refresh entry or power-down entry	t _{CKSRE}	MIN = greater of 5CK or 10ns; MAX = N/A				CK	
Valid clocks before self refresh exit, power-down exit, or reset exit	t _{CKSRX}	MIN = greater of 5CK or 10ns; MAX = N/A				CK	
Power-Down Timing							
CKE MIN pulse width	t _{CKE} (MIN)	Greater of 3CK or 5ns				CK	
Command pass disable delay	t _{CPDED}	MIN = 2; MAX = N/A		MIN = 1; MAX = N/A		CK	
Power-down entry to power-down exit timing	t _{PD}	MIN = t _{CKE} (MIN); MAX = 9 x t _{REFI}				CK	
Begin power-down period prior to CKE registered HIGH	t _{ANPD}	WL - 1CK				CK	
Power-down entry period: ODT either synchronous or asynchronous	PDE	Greater of t _{ANPD} or t _{RFC} - REFRESH command to CKE LOW time				CK	
Power-down exit period: ODT either synchronous or asynchronous	PDX	t _{ANPD} + t _{XPDLL}				CK	



Electrical characteristics and AC timing specification -6

Parameter	Symbol	DDR3/L-1866		DDR3/L-1600		Unit	Notes
		Min	Max	Min	Max		
Power-Down Entry Minimum Timing							
ACTIVATE command to power-down entry	$t_{ACTPDEN}$	MIN = 2		MIN = 1		CK	
PRE-CHARGE/PRE-CHARGE ALL command to power-down entry	t_{PRPDEN}	MIN = 2		MIN = 1		CK	
REFRESH command to power-down entry	$t_{REFPDEN}$	MIN = 2		MIN = 1		CK	37
MRS command to power-down entry	$t_{MRSPDEN}$	MIN = t_{MOD} (MIN)				CK	
READ/READ with auto pre-charge command to power-down entry	t_{RDPDEN}	MIN = $RL + 4 + 1$				CK	
WRITE command to power-down entry	BL8 (OTF, MRS) BC4OTF	t_{WRPDEN}		MIN = $WL + 4 + t_{WR}/t_{CK}$ (AVG)		CK	
	BC4MRS	t_{WRPDEN}		MIN = $WL + 2 + t_{WR}/t_{CK}$ (AVG)		CK	
WRITE with auto pre-charge command to power-down entry	BL8 (OTF, MRS) BC4OTF	$t_{WRAPDEN}$		MIN = $WL + 4 + WR + 1$		CK	
	BC4MRS	$t_{WRAPDEN}$		MIN = $WL + 2 + WR + 1$		CK	
Power-Down Exit Timing							
DLL on, any valid command, or DLL off to commands not requiring locked DLL	t_{XP}	MIN = greater of 3CK or 6ns; MAX = N/A				CK	
Pre-charge power-down with DLL off to commands requiring a locked DLL	t_{XPDLL}	MIN = greater of 10CK or 24ns; MAX = N/A				CK	28
ODT Timing							
R_{TT} synchronous turn-on delay	ODTL on	$CWL + AL - 2CK$				CK	38
R_{TT} synchronous turn-off delay	ODTL off	$CWL + AL - 2CK$				CK	40
R_{TT} turn-on from ODTL on reference	t_{AON}	-195	195	-225	225	ps	23, 38
R_{TT} turn-off from ODTL off reference	t_{AOF}	0.3	0.7	0.3	0.7	CK	39, 40
Asynchronous R_{TT} turn-on delay (power-down with DLL off)	t_{AONPD}	MIN = 2; MAX = 8.5				ns	38
Asynchronous R_{TT} turn-off delay (power-down with DLL off)	t_{AOFPD}	MIN = 2; MAX = 8.5				ns	40
ODT HIGH time with WRITE command and BL8	ODTH8	MIN = 6; MAX = N/A				CK	



Electrical characteristics and AC timing specification -7

Parameter	Symbol	DDR3/L-1866		DDR3/L-1600		Unit	Notes
		Min	Max	Min	Max		
ODT HIGH time without WRITE command or with WRITE command and BC4	ODTH4	MIN = 4; MAX = N/A				CK	
Dynamic ODT Timing							
R _{TT,nom} -to-R _{TT(WR)} change skew	ODTLcnw	WL - 2CK				CK	
R _{TT(WR)} -to-R _{TT,nom} change skew - BC4	ODTLcwn ₄	4CK + ODTLoff				CK	
R _{TT(WR)} -to-R _{TT,nom} change skew - BL8	ODTLcwn ₈	6CK + ODTLoff				CK	
R _{TT} dynamic change skew	t _{ADC}	0.3	0.7	0.3	0.7	CK	39
Write Leveling Timing							
First DQS, /DQS rising edge	t _{WLMRD}	40	-	40	-	CK	
DQS, /DQS delay	t _{WLDQSEN}	25	-	25	-	CK	
Write leveling setup from rising CK, /CK crossing to rising DQS, /DQS crossing	t _{WLS}	140	-	165	-	ps	
Write leveling hold from rising DQS, /DQS crossing to rising CK, /CK crossing	t _{WLH}	140	-	165	-	ps	
Write leveling output delay	t _{WLO}	0	7.5	0	7.5	ns	
Write leveling output error	t _{WLOE}	0	2.0	0	2.0	ns	

Notes:

- AC timing parameters are valid from specified T_C MIN to T_C MAX values.
- All voltages are referenced to V_{SS}.
- Output timings are only valid for RON34 output buffer selection.
- The unit t_{CK} (AVG) represents the actual t_{CK} (AVG) of the input clock under operation. The unit CK represents one clock cycle of the input clock, counting the actual clock edges.
- AC timing and IDD tests may use a V_{IL}-to-V_{IH} swing of up to 900mV in the test environment, but input timing is still referenced to V_{REF} (except t_{IS}, t_{IH}, t_{DS}, and t_{DH} use the AC/DC trip points and CK, /CK and DQS, /DQS use their crossing points). The minimum slew rate for the input signals used to test the device is 1 V/ns for single-ended inputs (DQs are at 2V/ns for DDR3/L-1866 and DDR3/L-2133) and 2 V/ns for differential inputs in the range between V_{IL(AC)} and V_{IH(AC)}.
- All timings that use time-based values (ns, μs, ms) should use t_{CK} (AVG) to determine the correct number of clocks. In the case of noninteger results, all minimum limits are to be rounded up to the nearest whole integer, and all maximum limits are to be rounded down to the nearest whole integer.
- Strobe or DQSdiff refers to the DQS and /DQS differential crossing point when DQS is the rising edge. Clock or CK refers to the CK and /CK differential crossing point when CK is the rising edge.
- This output load is used for all AC timing (except ODT reference timing) and slew rates. The actual test load may be different. The output signal voltage reference point is V_{DDQ}/2 for single-ended signals and the crossing point for differential signals.
- When operating in DLL disable mode, the DRAM is not warranted in compliance with normal mode timings or functionality.
- The clock's t_{CK} (AVG) is the average clock over any 200 consecutive clocks and t_{CK} (AVG) MIN is the smallest clock rate allowed, with the exception of a deviation due to clock jitter. Input clock jitter is allowed provided it does not exceed values specified and must be of a random Gaussian distribution in nature.
- Spread spectrum is not included in the jitter specification values. However, the input clock can accommodate spread-spectrum at a sweep rate in the range of 20–60 kHz with an additional 1% of t_{CK} (AVG) as a long-term jitter component; however, the spread spectrum may not use a clock rate below t_{CK} (AVG) MIN.
- The clock's t_{CH} (AVG) and t_{CL} (AVG) are the average half clock period over any 200 consecutive clocks



and is the smallest clock half period allowed, with the exception of a deviation due to clock jitter. Input clock jitter is allowed provided it does not exceed values specified and must be of a random Gaussian distribution in nature.

13. The period jitter (JIT_{per}) is the maximum deviation in the clock period from the average or nominal clock. It is allowed in either the positive or negative direction.
14. CH (ABS) is the absolute instantaneous clock high pulse width as measured from one rising edge to the following falling edge.
15. CL (ABS) is the absolute instantaneous clock low pulse width as measured from one falling edge to the following rising edge.
16. The cycle-to-cycle jitter JIT_{cc} is the amount the clock period can deviate from one cycle to the next. It is important to keep cycle-to-cycle jitter at a minimum during the DLL locking time.
17. The cumulative jitter error ERR_{nper} , where n is the number of clocks between 2 and 50, is the amount of clock time allowed to accumulate consecutively away from the average clock over n number of clock cycles.
18. DS (base) and DH (base) values are for a single-ended 1 V/ns slew rate DQs (DQs are at 2 V/ns for DDR3/L-1866 and DDR3/L-2133) and 2 V/ns slew rate differential DQS, /DQS; when DQ single-ended slew rate is 2V/ns, the DQS differential slew rate is 4V/ns.
19. These parameters are measured from a data signal (DM, DQ0, DQ1, and so forth) transition edge to its respective data strobe signal (DQS, /DQS) crossing.
20. The setup and hold times are listed converting the base specification values (to which derating tables apply) to V_{REF} when the slew rate is 1 V/ns (DQs are at 2V/ns for DDR3/L-1866 and DDR3/L-2133). These values, with a slew rate of 1 V/ns (DQs are at 2V/ns for DDR3/L-1866 and DDR3/L-2133), are for reference only.
21. When the device is operated with input clock jitter, this parameter needs to be derated by the actual JIT_{per} (larger of JIT_{per} (MIN) or JIT_{per} (MAX) of the input clock (output deratings are relative to the SDRAM input clock).
22. Single-ended signal parameter.
23. The DRAM output timing is aligned to the nominal or average clock. Most output parameters must be derated by the actual jitter error when input clock jitter is present, even when within specification. This results in each parameter becoming larger. The following parameters are required to be derated by subtracting $\text{tERR}_{10\text{per}}$ (MAX): DQSCK (MIN), LZDQS (MIN), LZDQ (MIN), and AON (MIN). The following parameters are required to be derated by subtracting $\text{tERR}_{10\text{per}}$ (MIN): DQSCK (MAX), HZ (MAX), LZDQS (MAX), LZDQ (MAX), and AON (MAX). The parameter RPRE (MIN) is derated by subtracting JIT_{per} (MAX), while RPRE (MAX) is derated by subtracting JIT_{per} (MIN).
24. The maximum preamble is bound by LZDQS (MAX).
25. These parameters are measured from a data strobe signal (DQS, /DQS) crossing to its respective clock signal (CK, /CK) crossing. The specification values are not affected by the amount of clock jitter applied, as these are relative to the clock signal crossing. These parameters should be met whether clock jitter is present.
26. The DQSCK (DLL_DIS) parameter begins $\text{CL} + \text{AL} - 1$ cycles after the READ command.
27. The maximum postamble is bound by HZDQS (MAX).
28. Commands requiring a locked DLL are: READ (and RDAP) and synchronous ODT commands. In addition, after any change of latency tXPDLL , timing must be met.
29. IS (base) and IH (base) values are for a single-ended 1 V/ns control/command/address slew rate and 2 V/ns CK, /CK differential slew rate.
30. These parameters are measured from a command/address signal transition edge to its respective clock (CK, /CK) signal crossing. The specification values are not affected by the amount of clock jitter applied as the setup and hold times are relative to the clock signal crossing that latches the command/address. These parameters should be met whether clock jitter is present.
31. For these parameters, the DDR3/L SDRAM device supports nPARAM ($n\text{CK}$) = $\text{RU}(\text{PARAM}[\text{ns}]/\text{CK}[\text{AVG}] [\text{ns}])$, assuming all input clock jitter specifications are satisfied. For example, the device will support nRP ($n\text{CK}$) = $\text{RU}(\text{RP}/\text{CK}[\text{AVG}])$ if all input clock jitter specifications are met. This means that for DDR3/L-800 6-6-6, of which $\text{tRP} = 5\text{ns}$, the device will support $\text{nRP} = \text{RU}(\text{RP}/\text{CK}[\text{AVG}]) = 6$ as long as the input clock jitter specifications are met. That is, the PRE-CHARGE command at T_0 and the ACTIVATE command at $T_0 + 6$ are valid even if six clocks are less than 15ns due to input clock jitter.
32. During READs and WRITEs with auto pre-charge, the DDR3/L SDRAM will hold off the internal PRE-CHARGE command until RAS (MIN) has been satisfied.
33. When operating in DLL disable mode, the greater of 5CK or 15ns is satisfied for tWR .

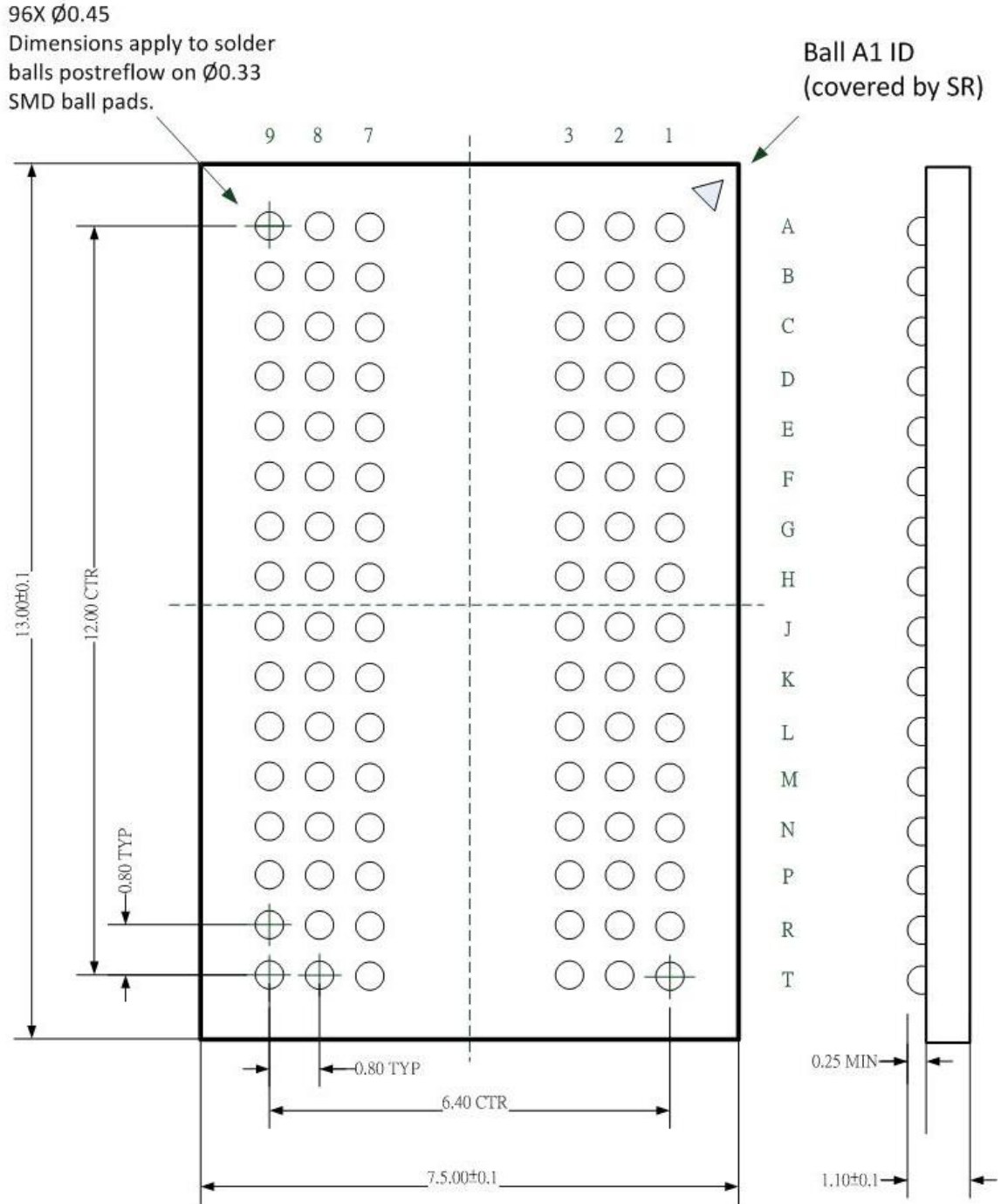


34. The start of the write recovery time is defined as follows:
 - For BL8 (fixed by MRS or OTF): Rising clock edge four clock cycles after WL
 - For BC4 (OTF): Rising clock edge four clock cycles after WL
 - For BC4 (fixed by MRS): Rising clock edge two clock cycles after WL
35. /RESET should be LOW as soon as power starts to ramp to ensure the outputs are in High-Z. Until /RESET is LOW, the outputs are at risk of driving and could result in excessive current, depending on bus activity.
36. The refresh period is 64ms when TC is less than or equal to 85°C. This equates to an average refresh rate of 7.8125µs. However, nine REFRESH commands should be asserted at least once every 70.3µs. When TC is greater than 85°C, the refresh period is 32ms. When TC is greater than 105°C, the refresh period is 8ms.
37. Although CKE is allowed to be registered LOW after a REFRESH command when 'REFPDEN (MIN) is satisfied, there are cases where additional time such as 'XPDLL (MIN) is required.
38. ODT turn-on time MIN is when the device leaves High-Z and ODT resistance begins to turn on. ODT turn-on time maximum is when the ODT resistance is fully on. This output load is used for ODT timings. Designs that were created prior to JEDEC tightening the maximum limit from 9ns to 8.5ns will be allowed to have a 9ns maximum.
39. Half-clock output parameters must be derated by the actual tERR10per and 'JITdty when input clock jitter is present. This results in each parameter becoming larger. The parameters 'ADC (MIN) and tAOF (MIN) are each required to be derated by subtracting both 'ERR10per (MAX) and 'JITdty (MAX). The parameters 'ADC (MAX) and 'AOF (MAX) are required to be derated by subtracting both 'ERR10per (MAX) and 'JITdty (MAX).
40. ODT turn-off time minimum is when the device starts to turn off ODT resistance. ODT turn-off time maximum is when the DRAM buffer is in High-Z.
41. Pulse width of a input signal is defined as the width between the first crossing of $V_{REF(DC)}$ and the consecutive crossing of $V_{REF(DC)}$.
42. Should the clock rate be larger than 'RFC (MIN), an AUTO REFRESH command should have at least one NOP command between it and another AUTO REFRESH command. Additionally, if the clock rate is slower than 40ns (25 MHz), all REFRESH commands should be followed by a PRE-CHARGE ALL command.
43. DRAM devices should be evenly addressed when being accessed. Disproportionate accesses to a particular row address may result in a reduction of REFRESH characteristics or product lifetime.
44. When two $V_{IH(AC)}$ values (and two corresponding $V_{IL(AC)}$ values) are listed for a specific speed bin, the user may choose either value for the input AC level. Whichever value is used, the associated setup time for that AC level must also be used. Additionally, one $V_{IH(AC)}$ value may be used for address/command inputs and the other $V_{IH(AC)}$ value may be used for data inputs.

For example, for DDR3/L-800, two input AC levels are defined: $V_{IH(AC175),min}$ and $V_{IH(AC150),min}$ (corresponding $V_{IL(AC175),min}$ and $V_{IL(AC150),min}$). For DDR3/L-800, the address/command inputs must use either $V_{IH(AC175),min}$ with 'IS(AC175) of 200ps or $V_{IH(AC150),min}$ with 'IS(AC150) of 350ps; independently, the data inputs must use either $V_{IH(AC175),min}$ with 'DS(AC175) of 75ps or $V_{IH(AC150),min}$ with 'DS(AC150) of 125ps.



Package Description: 96Ball-FBGA (7.5x13 mm)



X-ON Electronics

Largest Supplier of Electrical and Electronic Components

Click to view similar products for [DRAM](#) category:

Click to view products by [Mk](#) manufacturer:

Other Similar products are found below :

[M366S0924FTS-C7A00](#) [MT52L256M32D1PF-107 WT:B](#) [HM514100AZ-80](#) [IS42VM16400M-75BLI](#) [K4S560432C-TC75](#) [ATCA-7360-MEM-4G](#) [MN41C4256A-07](#) [DEMT46H128M16LFCK6ITA](#) [S27KL0641DABHB020](#) [AS4C64M16D1A-6TCN](#) [AS4C256M8D2-25BIN](#) [MT52L256M32D1PF-107 WT:B TR](#) [S27KS0641DPBHV020](#) [AS4C64M32MD2-25BCN](#) [AS4C128M16MD2A-25BIN](#) [IS43LR16800G-6BL](#) [W97AH6KBVX2I](#) [MT44K16M36RB-125E:A TR](#) [IS45S32800J-7TLA2](#) [MT42L32M32D1HE-18 IT:D](#) [IS66WVH32M8DALL-166B1LI](#) [S27KL0642DPBHI020](#) [S70KS1282GABHB020](#) [S70KL1282DPBHI020](#) [S70KS1282GABHV020](#) [SQR-SD4N8G3K2SNBCB](#) [IS66WVO32M8DALL-200BLI-TR](#) [IS66WVO32M8DBLL-133BLI-TR](#) [IS46TR16K01S2AL-125KBLA2](#) [IS46QR16512A-083TBLA2](#) [MT48LC64M8A2P-75:C TR](#) [AS4C4M32SA-6TINTR](#) [MT40A2G8JC-062E IT:E](#) [MT53E1G32D2FW-046 AAT:B TR](#) [MT53E512M64D2RR-046 WT:B](#) [IS66WVH16M8DBLL-100B1LI](#) [S70KL1282GABHV020](#) [MT53E1G32D2FW-046 IT:B](#) [MT40A1G16TB-062E IT:F](#) [NT5CB256M16ER-FL](#) [NT5CB128M16IP-EK](#) [NT5CC512M8EN-EK](#) [K4F8E304HB-MGCJ](#) [K4B2G1646F-BCMA](#) [K4RAH165VB-BCQK](#) [K4E8E324ED-EGCG](#) [K4B4G1646E-BMMA](#) [NT5TU32M16FG-AC](#) [NT5CC64M16GP-DII](#) [NT6CL256M32AM-H1](#)