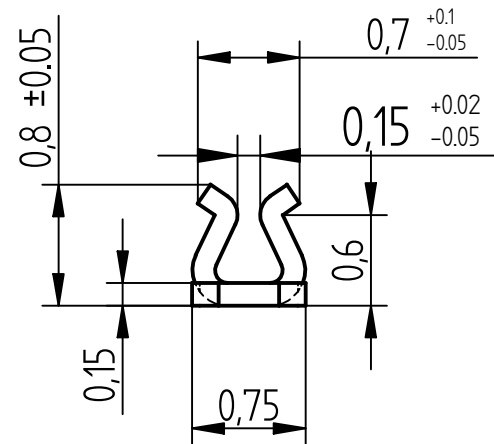
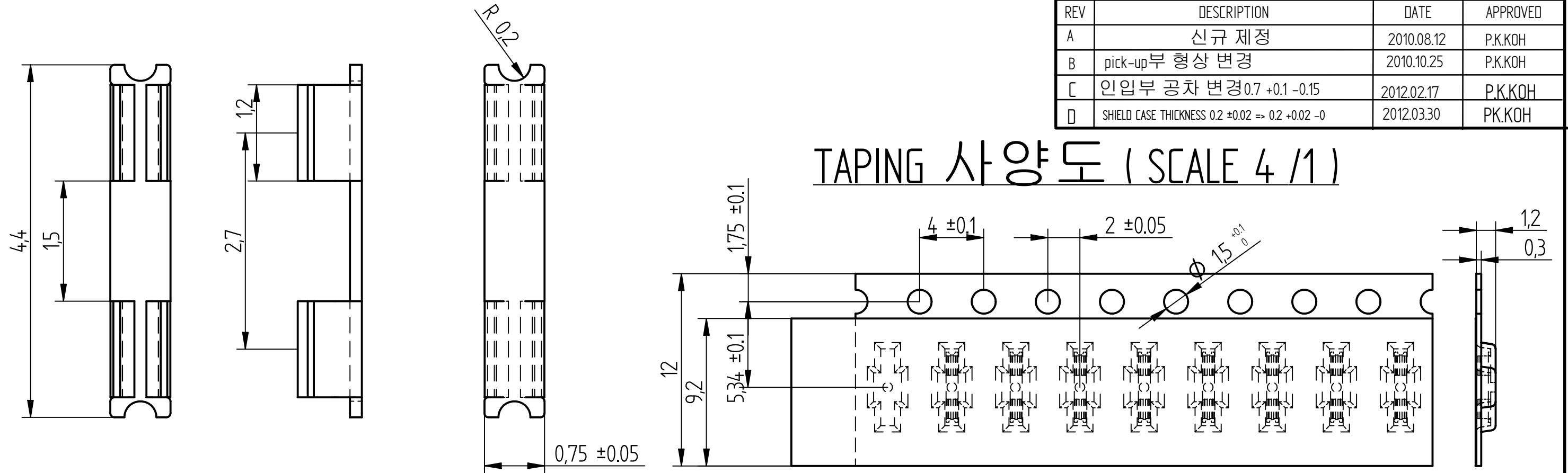


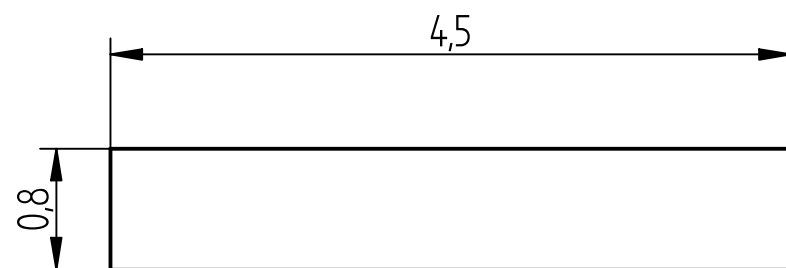
REVISION HISTORY

REV	DESCRIPTION	DATE	APPROVED
A	신규 제정	2010.08.12	P.K.KOH
B	pick-up부 형상 변경	2010.10.25	P.K.KOH
C	인입부 공차 변경 0.7 +0.1 -0.15	2012.02.17	P.K.KOH
D	SHIELD CASE THICKNESS 0.2 ±0.02 ⇒ 0.2 +0.02 -0	2012.03.30	PK.KOH

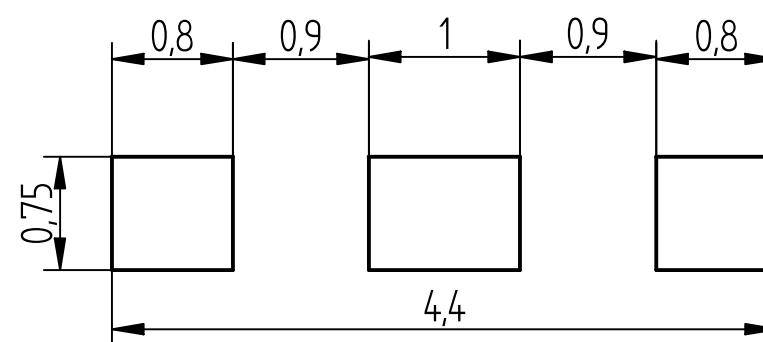
# TAPING 사양도 (SCALE 4/1)



SCALE 20/1



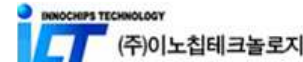
RECOMMENDED PCB LAYOUT



RECOMMENDED STENCIL LAYOUT

NOTES

- MATERIAL : SUS301
- MATERIAL THICKNESS : 0.15t
- FINISHED : Sn(100%) PLATING ON BOTH SIDE  
( Ni 0.5µm Sn 1.27µm )
- PACKING MATERIALS.  
- REEL : HIPS 0.3t  
- COVER TAPE : PS  
- Q'TY/REEL : 10,000ea
- AVAILABLE SHIELD CASE THICKNESS : 0.2 +0.02 -0
- CONTACT RESISTANCE : MAX 300mΩ
- STENCIL THICKNESS : 0.12T
- Maintain 90° ±3 while engage & disengage shield can & shield clip to prevent deformation & to maintain retention force of shield clip

DATA	NAME	 (주)이노칩테크놀로지 Solution Provider	
APP. 2010.08.12	LEE		
CHECK		TITLE SHIELD CLIP	
DESG. 2010.08.12	P.K.KO	SIZE A3	DWG NO IC SRC-4408 SFR
UNLESS OTHERWISE SPECIFIED DIMENSIONS ARE IN MILLIMETERS TOLERANCES ARE ANGLES ± 0.3° 0 ~ 1 ± 0.05 1 ~ 5 ± 0.1 5 ~ 10 ± 0.15		REV D	FILE NAME: IC SRC-4408SFR.dft
		SCALE:	WEIGHT:

## X-ON Electronics

Largest Supplier of Electrical and Electronic Components

*Click to view similar products for [Moda-Innochips](#) manufacturer:*

Other Similar products are found below :

[ICMEF062P250MFR](#) [ICMEF062P900MFR](#) [ICMEF112P120MFR](#) [ICMEF112P350MFR](#) [ICMEF112P900M](#) [ICMEF212P900MFR](#)  
[ICMEF214P101MFR](#) [ICMF052P900MFR](#) [ICMF062P250MFR](#) [ICMF062P900MFR](#) [ICMF112P120MFR](#) [ICMF112P350MFR](#)  
[ICMF112P900MFR](#) [ICMF212P121M](#) [ICMF212P900MFR](#) [ICMF214P101MFR](#) [ICSRC3908SFR](#) [ICSRC3910SFR](#) [ICSRC4408-015SFR](#)  
[ICSRC4408SFR](#) [ICSRC5210SFR](#) [ICSRC52128SFR](#) [ICSRC6508-015SFR](#) [ICSRC6508-025SFR](#) [ICSRC6508-030SFR](#) [ICSRC6508SFR](#)  
[ICSRC7830SFR](#) [ICVE10184E070R101](#) [ICVE10184E150R101FR](#) [ICVE21184E070R100](#) [ICVE21184E070R101FR](#) [ICVE21184E150R101](#)  
[ULCE0505A015FR](#) [ULCE1005A015FR](#)