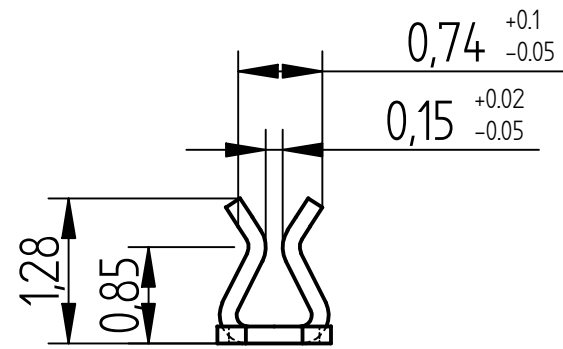
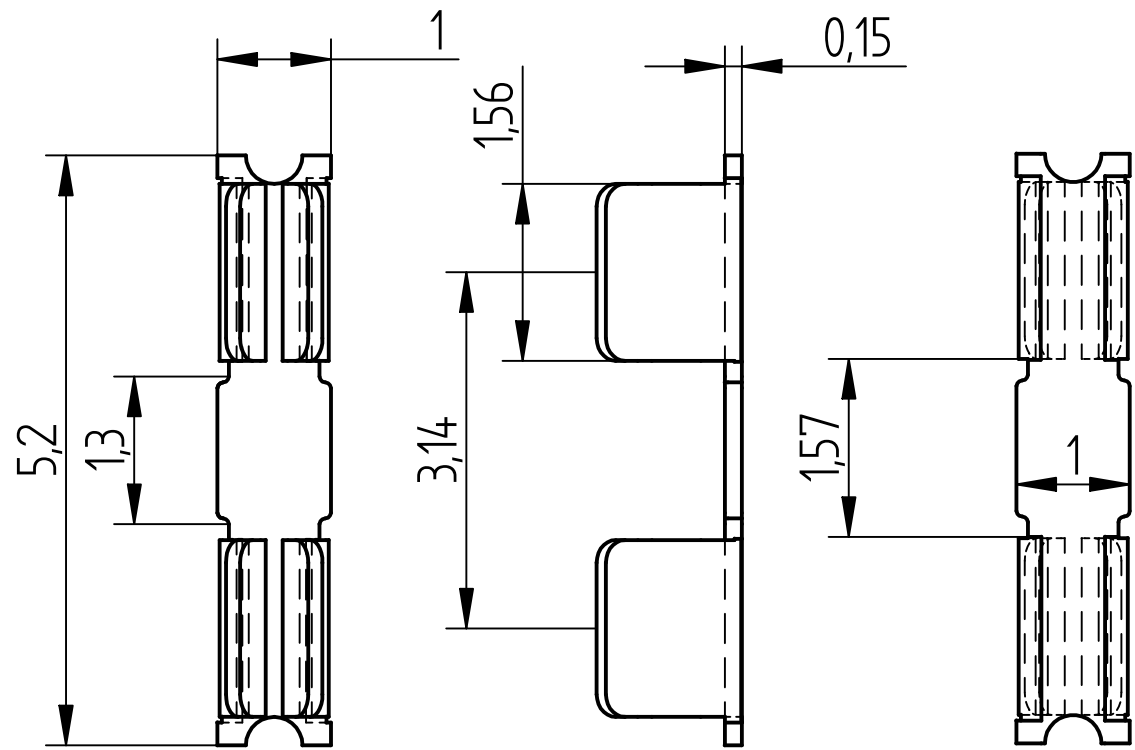
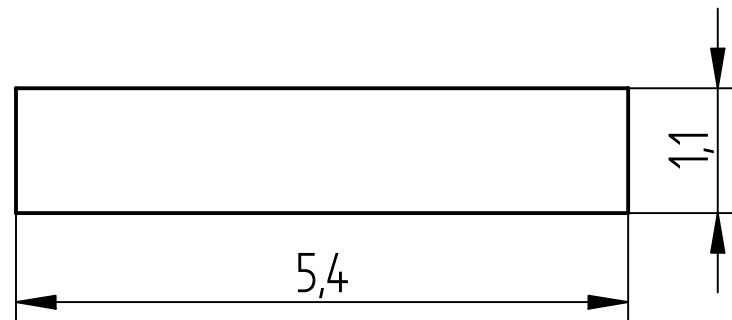


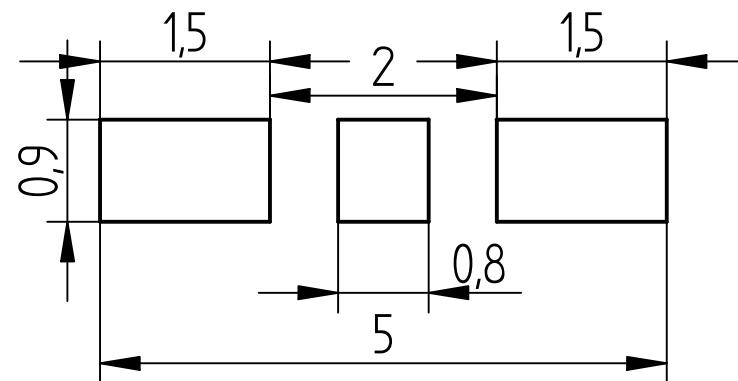
REVISION HISTORY			
REV	DESCRIPTION	DATE	APPROVED
A	신규제정	2009.04.05	P.K.KO
B	BOTTOM면 R변경 0.1 R	2010.08.23	P.K.KO
C	인입부 공차 변경 0.74 +0.1 -0.05	2012.02.17	P.K.KOH
D	SHIELD CASE THICKNESS 0.2 ±0.02 ⇒ 0.2 +0.02 -0	2012.03.30	P.K.KOH



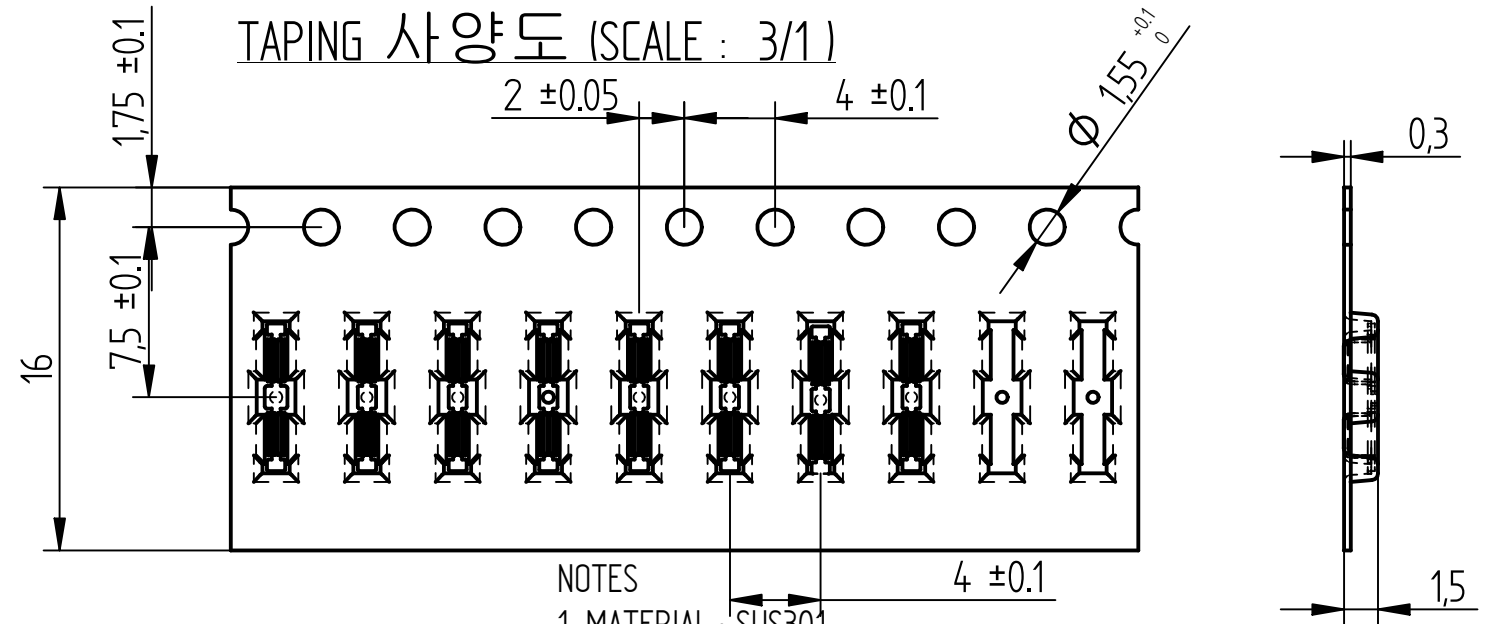
SCALE 15 / 1



RECOMMENDED PCB LAYOUT



RECOMMENDED STENCIL LAY-OUT 0.1T



TAPING 사양도 (SCALE : 3/1)

NOTES

1. MATERIAL : SUS301
2. MATERIAL THICKNESS : 0.15t
3. FINISHED : Sn(100%) PLATING ON BOTH SIDE
(Ni0.5 μ m Sn1.27 μ m)
4. PACKING MATERIALS.
- REEL : HIPS 0.3t
- COVER TAPE : PS
- Q'TY/REEL : 10,000ea
5. AVAILABLE SHIELD CASE THICKNESS : 0.2 +0.02 -0
6. CONTACT RESISTANCE 300mm Ω MAX
7. INTENTION FORCE/RETENTION FORCE SPEC

	INTENTION FORCE	RETENTION FORCE
SPEC	MAX 1.6Kg	MIN 0.5Kg

8. STENCIL THICKNESS : 0.12T
9. Maintain 90°±3 while engage & disengage shield can & shield clip to prevent deformation & to maintain retention force of shield clip

UNLESS OTHERWISE SPECIFIED
DIMENSIONS ARE IN MILLIMETERS
TOLERANCES ARE
ANGLES ± 0.3°
0 ~ 1 ± 0.05
1 ~ 5 ± 0.1
5 ~ 10 ± 0.15

INNOCHIPS TECHNOLOGY
ICT (주)이노칩테크놀로지
Solution Provider

TITLE SHILED CLIP		
SIZE A3	DWG NO ICSRC-5210SFR	REV D
FILE NAME: ICSRC-5210SFRdft.dft		
SCALE:	WEIGHT:	SHEET 1 OF 1

X-ON Electronics

Largest Supplier of Electrical and Electronic Components

Click to view similar products for [Moda-Innochips](#) manufacturer:

Other Similar products are found below :

[ICMEF062P250MFR](#) [ICMEF062P900MFR](#) [ICMEF112P120MFR](#) [ICMEF112P350MFR](#) [ICMEF112P900M](#) [ICMEF212P900MFR](#)
[ICMEF214P101MFR](#) [ICMF052P900MFR](#) [ICMF062P250MFR](#) [ICMF062P900MFR](#) [ICMF112P120MFR](#) [ICMF112P350MFR](#)
[ICMF112P900MFR](#) [ICMF212P121M](#) [ICMF212P900MFR](#) [ICMF214P101MFR](#) [ICSRC3908SFR](#) [ICSRC3910SFR](#) [ICSRC4408-015SFR](#)
[ICSRC4408SFR](#) [ICSRC5210SFR](#) [ICSRC52128SFR](#) [ICSRC6508-015SFR](#) [ICSRC6508-025SFR](#) [ICSRC6508-030SFR](#) [ICSRC6508SFR](#)
[ICSRC7830SFR](#) [ICVE10184E070R101](#) [ICVE10184E150R101FR](#) [ICVE21184E070R100](#) [ICVE21184E070R101FR](#) [ICVE21184E150R101](#)
[ULCE0505A015FR](#) [ULCE1005A015FR](#)