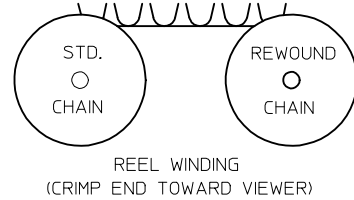
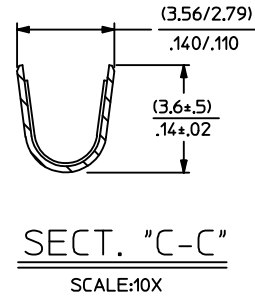
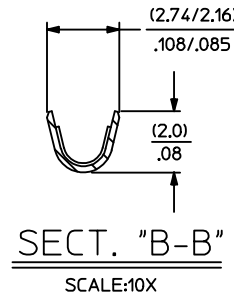
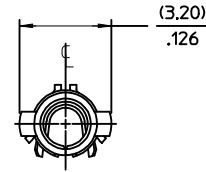
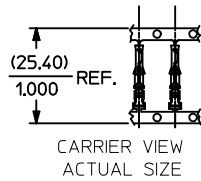


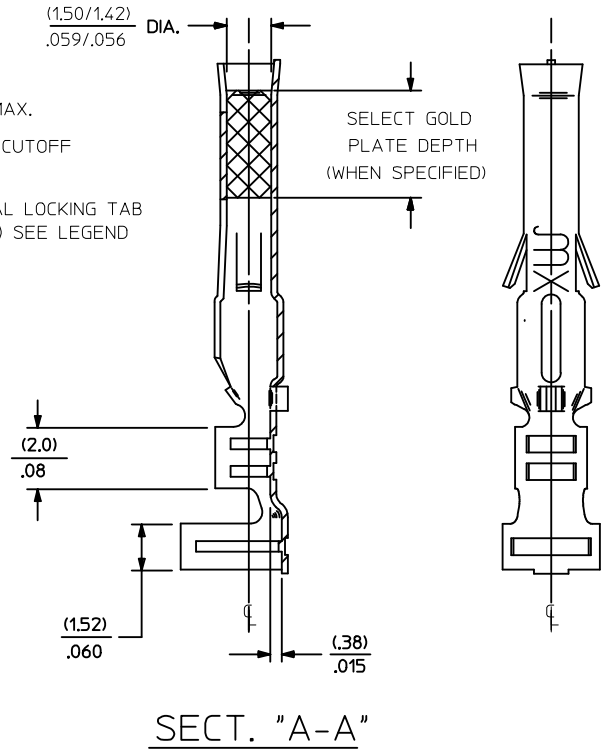
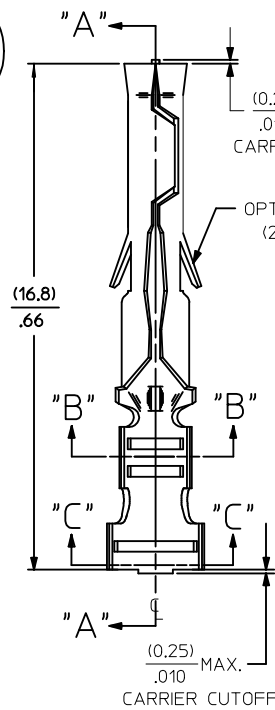
PART NO.	ENG. NO.
02-06-1104	4529-(P901)
02-06-1105	4529-(P901)L
02-06-5117	4529-(P231)
02-06-5118	4529-(P231)L
NOT TOOLED	4529-1(P901)L



**LEGEND**

4529-\*(\*\*\*\*)\*

- BLANK = WITH LOCKING TABS
- 1=WITHOUT LOCKING TABS
- P=PREPLATE
- BLANK=POSTPLATE
- FINISH CODE
- FORM
- BLANK=STD. CHAIN
- A=REWOUND CHAIN
- L=LOOSE



**SECT. "A-A"**

- NOTES:
- MATERIAL: PHOSPHOR BRONZE
  - FINISH:
    - 901 HOT TIN DIP (.00051)/.000020 MIN.
    - 231 SELECT GOLD PLATE (.00125)/.000050 MIN. IN CONTACT AREA, SELECT TIN. (.00250)/.000100 MIN. IN CRIMP AREA OVER(.00125)/.000050 MIN. NICKEL OVERALL.
  - PRODUCT SPECIFICATION: PS-02-06
  - PACKAGING SPECIFICATION: NOT AVAILABLE
  - TERMINALS FOR USE WITH (1.57)/.062 DIA. SERIES HOUSINGS AND WILL ACCEPT 18 THRU 24 AWG WIRE WITH (1.52/3.05)/.060/.120 INSULATION DIA.

REVISE NOTE 2 EC NO: UCP2015-0104 DRWN: JDFOX 2014/07/11 CHKD: HKIPPER 2014/07/11 APPR: FSMJTH 2014/07/31	QUALITY SYMBOLS ▽=0 ▽=0 ▽=0	GENERAL TOLERANCES (UNLESS SPECIFIED)		DIMENSION STYLE	SCALE	DESIGN UNITS	THIRD ANGLE PROJECTION	
		mm	INCH	IN/MM	8:1	INCH		
		4 PLACES ± .005	± .005	DRAWN BY	DATE	TITLE		
		3 PLACES ± .010	± .010	CHECKED BY	DATE	CRIMP TERMINAL, FEMALE .062 DIA., PHOS. BRONZE FOR 18 THRU 24 GA. WIRE <b>molex</b>		
2 PLACES ± 0.13	± .010	APPROVED BY	DATE					
1 PLACE ± 0.25	± .015	MATERIAL NO.	DOCUMENT NO.	SHEET NO.				
0 PLACE ± .015	± .015	DRAFT WHERE APPLICABLE MUST REMAIN WITHIN DIMENSIONS		SEE CHART		SD-4529-*		
ANGULAR ±1/2°				SIZE C		THIS DRAWING CONTAINS INFORMATION THAT IS PROPRIETARY TO MOLEX INCORPORATED AND SHOULD NOT BE USED WITHOUT WRITTEN PERMISSION		

## X-ON Electronics

Largest Supplier of Electrical and Electronic Components

*Click to view similar products for [Pin & Socket Connectors](#) category:*

*Click to view products by [Molex](#) manufacturer:*

Other Similar products are found below :

[6450822-1](#) [770392-1](#) [794042-1](#) [796885-1](#) [8-794535-1](#) [PLR3455ACS-222](#) [R929991004](#) [R929993003](#) [1403611-1](#) [1-480349-5](#) [152302-5](#)  
[153211-2](#) [1586092-1](#) [1586129-1](#) [1586681-4](#) [1586700-1](#) [1586368-1](#) [1586380-1](#) [1586616-1](#) [1586680-5](#) [16-06-0038](#) [164164-5](#) [1-6609930-1](#)  
[172296-1](#) [19-09-2035](#) [200503-1](#) [200788-2](#) [2029090-4](#) [2029095-4](#) [925061-7](#) [293734-4](#) [293737-2](#) [1-765362-4](#) [1871534-1](#) [200833-4](#)  
[2008625-2](#) [2029027-2](#) [2029096-4](#) [R929991000](#) [R929991002](#) [R929993000](#) [319-10-101-00-005000](#) [319-10-102-00-001000](#) [319-10-104-00-001000](#) [319-10-105-00-001000](#) [319-10-108-00-001000](#) [319-10-112-00-006000](#) [39-01-8019](#) [319-10-101-00-001000](#) [319-10-102-00-005000](#)