



Standard Component Parts

The component part you are reviewing can potentially be used in multiple Molex tools or multiple Molex tool kits.

Example: A punch or anvil is a component of an applicator. The applicator order no. is the upper lever part no. you will need to search for on Molex.com.

Please enter the upper level Molex tooling order number on the Molex Web search to find more information about this component part.

Please review the complete tool's Application Tooling Specification document on the Molex Website.

To understand how to find the proper tooling and the proper tooling documentation on the Molex Website please review the following instructions.

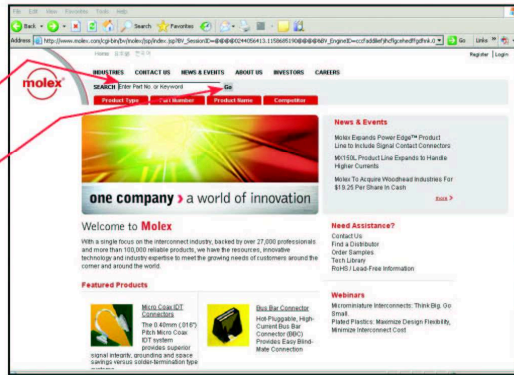
▶ Tooling How to Find Tooling on www.molex.com

Step 1: Go to www.molex.com

Step 2: Enter Connector Part Number Into Search

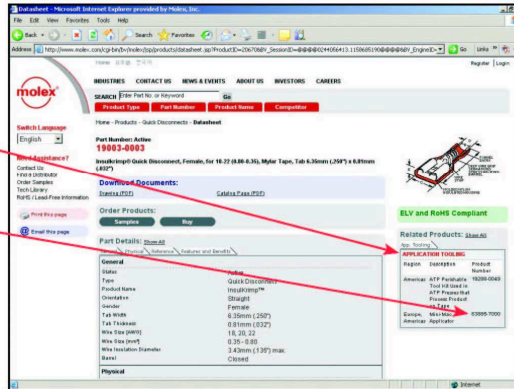
Enter Part Number Here

Hit the "GO" Button



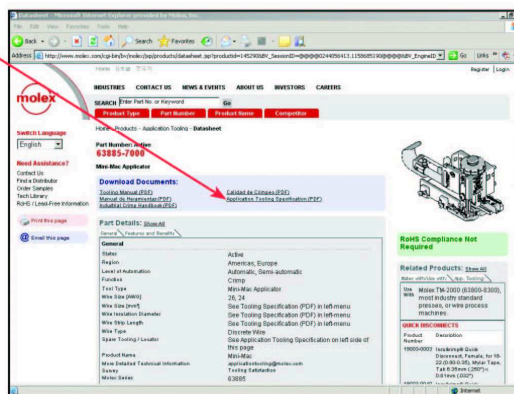
Step 3: Review Product Page for Tooling Links on Right

Review tooling link(s) and double click black link

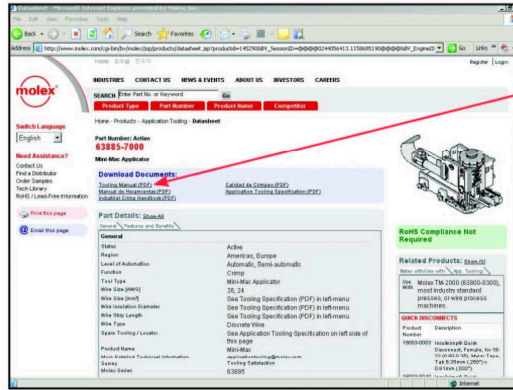


Step 4: Review Tooling Page Application Tooling Specification

Application Tooling Specification sheets have all tooling information: terminals used in tool, crimp height, pull force, perishable tool kits, repair kits, how to measure go/no-go, list of products processed, new product number, old product number, wire strip length, part list for tooling components, exploded view of installation and maintenance and warranty information

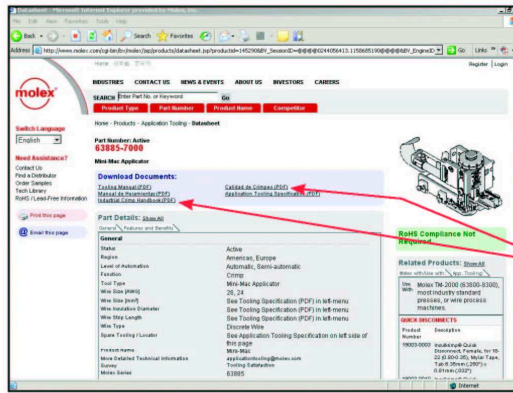


▶ Tooling How to Find Tooling on www.molex.com



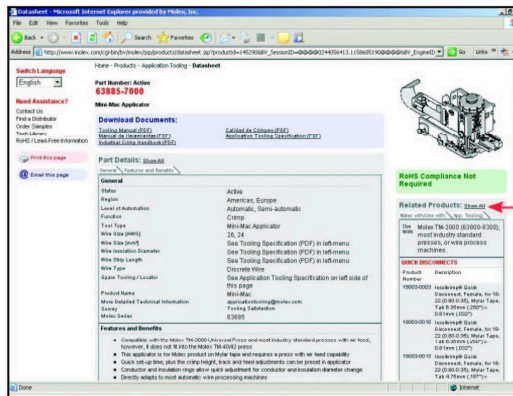
Step 4: Review Tooling Page Tooling Manual

The Tooling Manual has all of the basic information regarding to the tool. Not all tools have a manual



Step 5: Review Tooling Page Crimp Quality Handbook

The Crimp Quality Handbook has all of the basic information regarding a proper crimp. Open barrel (CPD) and closed barrel (TBO) have their own quality manuals linked on the web. There are English and Spanish versions of both manuals.



Other Information on Page

Tooling page will show all of the web-published terminals that the tool will run



www.molex.com/product/apptool/

X-ON Electronics

Largest Supplier of Electrical and Electronic Components

Click to view similar products for [Crimpers](#) category:

Click to view products by [Molex](#) manufacturer:

Other Similar products are found below :

[576771-1](#) [576788-2](#) [010-0041](#) [010-0055](#) [010-0096](#) [604228-1](#) [M225202-37](#) [CT150-2-D02](#) [CT150-4-LY2](#) [CT150-6-RH07](#) [M322](#) [63484-3701](#)
[63800-0140](#) [63800-8355](#) [63811-3275](#) [63811-3376](#) [63811-6375](#) [63811-6475](#) [63811-7875](#) [63811-8175](#) [63811-8875](#) [63819-0475](#) [63819-1875](#)
[63819-2875](#) [63819-4375](#) [63819-4475](#) [63823-3475](#) [63823-5175](#) [63823-6375](#) [63823-8375](#) [63827-5375](#) [64001-0975](#) [64001-2175](#) [64001-4175](#)
[662903-2](#) [690142-4](#) [690602-6](#) [D38999/20WA98JB-LC](#) [7-1633664-2](#) [7-22278-0](#) [7-22280-5](#) [7-240641-3](#) [762637-1](#) [808714-1](#) [8-1633117-3](#)
[853721-6](#) [91362-1](#) [995-0001-187](#) [1-1633932-5](#) [999-50-020083](#)