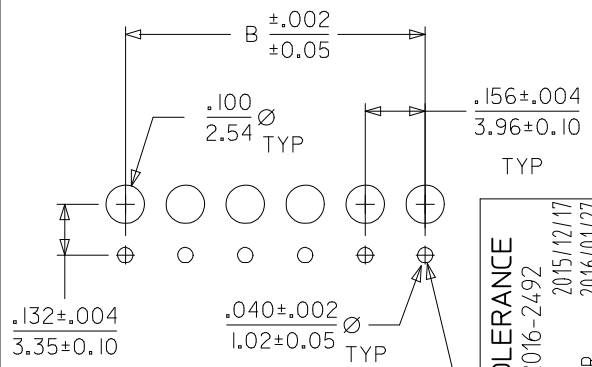


- NOTES:
- HOUSING MATERIAL: NYLON, UL 94V-2
 - FINISH:
 - (909) = OVERALL HOT TIN DIP: .000100/0.00254 MIN.
 - (197) OVERALL REFLOWED MATTE TIN: 0.00152/.000060 MIN. OVER 0.00127/.000050 MIN. NICKEL OVERALL.
 - (154) = OVERALL TIN: .000100/0.00254 MIN. OVERALL NICKEL UNDERPLATE: .000050/0.00127 MIN.
 - (208) = SELECT GOLD: .000015/0.00038 MIN. SELECT TIN: .000100/0.00254 MIN. OVERALL NICKEL UNDERPLATE: .000050/0.00127 MIN.
 - PRODUCT SPECIFICATION: PS-08-50
 - PACKAGING INFORMATION: SEE CHARTS.
 - SOLDERABILITY SPECIFICATION: SMES-152
 - RIGHT ANGLE OPTIONS: SEE DRAWING SDA-2145-001.
 - TOP ENTRY OPTIONS: SEE DRAWING SDA-2145-002.
 - .132/3.35 DIMENSION IS CENTER OF TERMINAL TO CENTER OF MATING PIN AND DOES NOT REFLECT CENTER OF THE CONNECTOR HOUSING WINDOW DIMENSION.
 - THIS PART CONFORMS TO CLASS B REQUIREMENTS OF COSMETIC SPECIFICATION PS-45499-002.
 - DIMENSION "C" MEASURED WITH TERMINAL PUSHED IN AGAINST THE STOP.

| CKT | A | B | CENTER HOOK(S) LOCATED BETWEEN CIRCUITS |
|-----|----------------|--------------------------|---|
| 02 | .308 7.82 | .156±.005 3.96±0.13 | NONE |
| 03 | .464 11.79 | .312±.005 7.92±0.13 | NONE |
| 04 | .620 15.75 | .468±.005 11.89±0.13 | NONE |
| 05 | .776 19.71 | .624±.005 15.85±0.13 | NONE |
| 06 | .932 23.67 | .780±.005 19.81±0.13 | NONE |
| 07 | 1.088 27.64 | .936±.010 23.77±0.25 | NONE |
| 08 | 1.244 31.60 | 1.092±.010 27.74±0.25 | 4 & 5 |
| 09 | 1.400 35.56 | 1.248±.010 31.70±0.25 | 4 & 5 |
| 10 | 1.556 39.52 | 1.404±.010 35.66±0.25 | 5 & 6 |
| 11 | 1.712 43.48 | 1.560±.010 39.62±0.25 | 5 & 6 |
| 12 | 1.868 47.45 | 1.716±.010 43.59±0.25 | 4 & 5, 8 & 9 |
| 13 | 2.024 51.41 | 1.872±.010 47.55±0.25 | 6 & 7, 11 & 12 |
| 14 | 2.180 55.37 | 2.028±.014 51.51±0.36 | 5 & 6, 9 & 10 |
| 15 | 2.336 59.33 | 2.184±.014 55.47±0.36 | 5 & 6, 10 & 11 |



PCB LAYOUT: COMPONENT SIDE
RECOMMENDED PCB THICKNESS .062/1.57

| | | |
|-------------------|---------------------|-------------|
| DIM "C" TOLERANCE | EC NO: UCP2016-2492 | 2015/12/17 |
| | DRWN:IGES | 2016/01/27 |
| | CHKD:MKIPPER | 2016/08/25 |
| | APPR:FSMITH | |
| AA | REV | DESCRIPTION |

| QUALITY SYMBOLS | DESCRIPTION |
|-----------------|-------------|
| ▽ = 0 | |
| ▽ = 0 | |
| ▽ = 0 | |

| GENERAL TOLERANCES (UNLESS SPECIFIED) | |
|--|---------------|
| | mm INCH |
| 4 PLACES | ± --- ± --- |
| 3 PLACES | ± --- ± .010 |
| 2 PLACES | ± 0.25 ± .014 |
| 1 PLACE | ± 0.36 ± --- |
| 0 PLACE | ± --- ± --- |
| ANGULAR ±1/2° | |
| DRAFT WHERE APPLICABLE MUST REMAIN WITHIN DIMENSIONS | |

| DIMENSION STYLE | |
|-----------------|------------|
| IN/MM | |
| DRAWN BY | DATE |
| SAMIEC | 01/16/03 |
| CHECKED BY | DATE |
| SAMIEC | 01/16/03 |
| APPROVED BY | DATE |
| FSMITH | 2016/08/25 |
| MATERIAL NO. | |
| SEE CHART | |
| SIZE | |
| A | |

| | | |
|---|--------------|------------------------|
| SCALE | DESIGN UNITS | THIRD ANGLE PROJECTION |
| | INCH | |
| TITLE | | |
| KK 156 HOUSING ASSY PC TAIL BOTTOM ENTRY | | |
| molex | | |
| DOCUMENT NO. | SHEET NO. | |
| SDA-2145-003 | 1 OF 4 | |
| THIS DRAWING CONTAINS INFORMATION THAT IS PROPRIETARY TO MOLEX INCORPORATED AND SHOULD NOT BE USED WITHOUT WRITTEN PERMISSION | | |



KK 156 PCB ASSY 2-15 CKT

2145 BOTTOM ENTRY SERIES

| OPTIONS | RAMPS | YES | RAMPS | YES |
|---------|--------------|---------------------|--------------|---------------------|
| | COLOR: | WHITE | COLOR: | WHITE |
| | MOLD VOID: | NONE | MOLD VOID: | NONE |
| | TERM MATL: | PHOS BRONZE | TERM MATL: | PHOS BRONZE |
| | CONTACT: | STANDARD | CONTACT: | STANDARD |
| | PC TAIL (C): | .160 / 4.06 | PC TAIL (C): | .160 / 4.06 |
| | PLT CODE: | 197 – TIN | PLT CODE: | 208 – 15 GOLD |
| | TERM VOID: | NONE | TERM VOID: | NONE |
| | PACKAGING: | TRAY PK-2145-001 | PACKAGING: | TRAY PK-2145-001 |
| Ckt | Material No | Material No | | |
| 2 | 09-62-6024 | 09-62-4028 | | |
| 3 | 09-62-6034 | 09-62-4038 | | |
| 4 | 09-62-6044 | 09-62-4048 | | |
| 5 | 09-62-6054 | 09-62-4058 | | |
| 6 | 09-62-6064 | 09-62-4068 | | |
| 7 | 09-62-6074 | 09-62-4078 | | |
| 8 | 09-62-6084 | 09-62-4088 | | |
| 9 | 09-62-6094 | 09-62-4098 | | |
| 10 | 09-62-6104 | 09-62-4108 | | |
| 11 | 09-62-6114 | 09-62-4118 | | |
| 12 | 09-62-6124 | 09-62-4128 | | |
| 13 | 09-62-6134 | 09-62-4138 | | |
| 14 | 09-62-6144 | 09-62-4148 | | |
| 15 | 09-62-6154 | 09-62-4158 | | |

| | | | |
|-------------------------|---|---|---------------------|
| REV: | CLARIFY HOOKS ECM 107740 8/22/2016 MKIPPER | TITLE: | SHEET No. |
| AA | | KK 156 PCB ASSY 2145 BOTTOM ENTRY SERIES | - 2 - |
| DOCUMENT NUMBER: | CREATED / REVISED BY: | CHECKED BY: | APPROVED BY: |
| SDA-2145-003 | MKIPPER | JBELL | FSMITH |



KK 156 PCB ASSY 2-15 CKT

2145 BOTTOM ENTRY SERIES

| OPTIONS | RAMPS | YES | RAMPS | YES | RAMPS | YES | RAMPS | YES |
|---------|--------------|---------------------|--------------|---------------------|--------------|---------------------|--------------|---------------------|
| | COLOR: | WHITE | COLOR: | WHITE | COLOR: | WHITE | COLOR: | WHITE |
| | MOLD VOID: | NONE | MOLD VOID: | NONE | MOLD VOID: | NONE | MOLD VOID: | NONE |
| | TERM MATL: | PHOS BRONZE | TERM MATL: | BRASS | TERM MATL: | BRASS | TERM MATL: | BRASS |
| | CONTACT: | STANDARD | CONTACT: | STANDARD | CONTACT: | STANDARD | CONTACT: | STANDARD |
| | PC TAIL (C): | .160 / 4.06 | PC TAIL (C): | .160 / 4.06 | PC TAIL (C): | .160 / 4.06 | PC TAIL (C): | .126 / 3.20 |
| | PLT CODE: | P909 – TIN | PLT CODE: | P909 – TIN | PLT CODE: | 208 – 15 GOLD | PLT CODE: | P909 – TIN |
| | TERM VOID: | NONE | TERM VOID: | NONE | TERM VOID: | NONE | TERM VOID: | NONE |
| | PACKAGING: | TRAY PK-2145-001 | PACKAGING: | TRAY PK-2145-001 | PACKAGING: | TRAY PK-2145-001 | PACKAGING: | TRAY PK-2145-001 |
| Ckt | Material No | Material No | Material No | Material No | Material No | Material No | Material No | |
| 2 | 09-52-2028 | 09-52-3022 | 09-62-3022 | 09-52-5022 | | | | |
| 3 | 09-52-2038 | 09-52-3032 | 09-62-3032 | 09-52-5032 | | | | |
| 4 | 09-52-2048 | 09-52-3042 | 09-62-3042 | 09-52-5042 | | | | |
| 5 | 09-52-2058 | 09-52-3052 | 09-62-3052 | 09-52-5052 | | | | |
| 6 | 09-52-2068 | 09-52-3062 | 09-62-3062 | 09-52-5062 | | | | |
| 7 | 09-52-2078 | 09-52-3072 | 09-62-3072 | 09-52-5072 | | | | |
| 8 | 09-52-2088 | 09-52-3082 | 09-62-3082 | 09-52-5082 | | | | |
| 9 | 09-52-2098 | 09-52-3092 | 09-62-3092 | 09-52-5092 | | | | |
| 10 | 09-52-2108 | 09-52-3102 | 09-62-3102 | 09-52-5102 | | | | |
| 11 | 09-52-2118 | 09-52-3112 | 09-62-3112 | 09-52-5112 | | | | |
| 12 | 09-52-2128 | 09-52-3122 | 09-62-3122 | 09-52-5122 | | | | |
| 13 | 09-52-2138 | 09-52-3132 | 09-62-3132 | 09-52-5132 | | | | |
| 14 | 09-52-2148 | 09-52-3142 | 09-62-3142 | 09-52-5142 | | | | |
| 15 | 09-52-2158 | 09-52-3152 | 09-62-3152 | 09-52-5152 | | | | |

| | | | | | |
|-------------------------|---|------------------------------|---|----------------------------------|--------------|
| REV: | CLARIFY HOOKS ECM 107740 8/22/2016 MKIPPER | TITLE: | KK 156 PCB ASSY 2145 BOTTOM ENTRY SERIES | <u>SHEET No.</u> - 3 - | |
| AA | | | | | |
| <u>DOCUMENT NUMBER:</u> | SDA-2145-003 | <u>CREATED / REVISED BY:</u> | MKIPPER | <u>CHECKED BY:</u> | JBELL |
| | | <u>APPROVED BY:</u> | FSMITH | | |



KK 156 PCB ASSY 2-15 CKT

2145 BOTTOM ENTRY SERIES

| OPTIONS | RAMPS | YES | RAMPS | | RAMPS | | RAMPS | |
|---------|--------------|---------------------|--------------|--|--------------|--|--------------|--|
| | COLOR: | WHITE | COLOR: | | COLOR: | | COLOR: | |
| | MOLD VOID: | NONE | MOLD VOID: | | MOLD VOID: | | MOLD VOID: | |
| | TERM MATL: | PHOS BRONZE | TERM MATL: | | TERM MATL: | | TERM MATL: | |
| | CONTACT: | STANDARD | CONTACT: | | CONTACT: | | CONTACT: | |
| | PC TAIL (C): | .160 / 4.06 | PC TAIL (C): | | PC TAIL (C): | | PC TAIL (C): | |
| | PLT CODE: | P154 – TIN | PLT CODE: | | PLT CODE: | | PLT CODE: | |
| | TERM VOID: | NONE | TERM VOID: | | TERM VOID: | | TERM VOID: | |
| | PACKAGING: | TRAY PK-2145-001 | PACKAGING: | | PACKAGING: | | PACKAGING: | |
| Ckt | Material No | | Material No | | Material No | | Material No | |
| 2 | 50-30-4405 | | | | | | | |
| 3 | 50-30-4406 | | | | | | | |
| 4 | 50-30-4407 | | | | | | | |
| 5 | 50-30-4408 | | | | | | | |
| 6 | 50-30-4409 | | | | | | | |
| 7 | 50-30-4411 | | | | | | | |
| 8 | 50-30-4412 | | | | | | | |
| 9 | 50-30-4413 | | | | | | | |
| 10 | 50-30-4414 | | | | | | | |
| 11 | 50-30-4415 | | | | | | | |
| 12 | 50-30-4416 | | | | | | | |
| 13 | 50-30-4417 | | | | | | | |
| 14 | 50-30-4418 | | | | | | | |
| 15 | 50-30-4419 | | | | | | | |

| | | | |
|--|---|--|--------------------------------------|
| REV: AA | CLARIFY HOOKS ECM 107740 8/22/2016 MKIPPER | TITLE: KK 156 PCB ASSY 2145 BOTTOM ENTRY SERIES | SHEET No. - 4 - |
| DOCUMENT NUMBER: SDA-2145-003 | CREATED / REVISED BY: MKIPPER | CHECKED BY: JBELL | APPROVED BY: FSMITH |

X-ON Electronics

Largest Supplier of Electrical and Electronic Components

Click to view similar products for [Headers & Wire Housings](#) category:

Click to view products by [Molex](#) manufacturer:

Other Similar products are found below :

[892-18-020-10-001101](#) [58102-G61-06LF](#) [582553-1](#) [0009485154](#) [009176003701906](#) [0050291907](#) [LY20-4P-DT1-P1E-BR](#) [02.125.8002.8](#)
[609-3404](#) [61062-3](#) [622-0430](#) [622-3653LF](#) [63453-116](#) [636-1030](#) [636-1427](#) [636-3427](#) [636-4007](#) [641938-9](#) [641991-4](#) [644827-2](#) [65817-010LF](#)
[65817-015LF](#) [65863-015LF](#) [66207-023LF](#) [67095-007LF](#) [67601157](#) [68648-049](#) [70.362.1628.0](#) [70-4210](#) [70-4226B](#) [70-4853B](#) [707-5020](#) [707-](#)
[5028](#) [71.350.2428.0](#) [71918-208LF](#) [71961-016LF](#) [733-134](#) [733-162](#) [754199-000](#) [760-3052](#) [787-8014-00](#) [79531-3000](#) [FCN-360C032-B](#) [FCN-](#)
[367T-T012/H](#) [FCN-723D010/2](#) [80.063.4001.1](#) [800-90-001-10-001000](#) [800-90-010-10-002000](#) [801-43-002-10-013000](#) [801-43-006-10-002000](#)