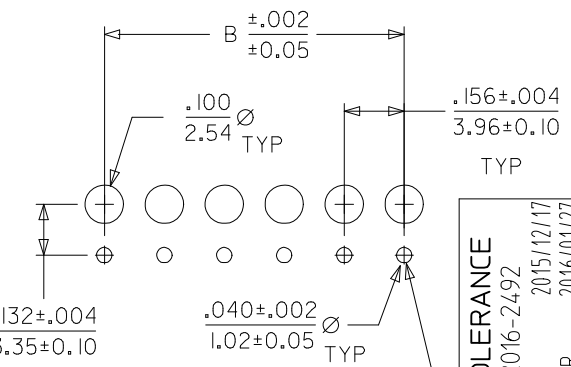


- NOTES:
- HOUSING MATERIAL: NYLON, UL 94V-2
 - FINISH:
 - (909) = OVERALL HOT TIN DIP: .000100/0.00254 MIN.
 - (197) OVERALL REFLOWED MATTE TIN: 0.00152/.000060 MIN. OVER 0.00127/.000050 MIN. NICKEL OVERALL.
 - (154) = OVERALL TIN: .000100/0.00254 MIN. OVERALL NICKEL UNDERPLATE: .000050/0.00127 MIN.
 - (208) = SELECT GOLD: .000015/0.00038 MIN. SELECT TIN: .000100/0.00254 MIN. OVERALL NICKEL UNDERPLATE: .000050/0.00127 MIN.
 - PRODUCT SPECIFICATION: PS-08-50
 - PACKAGING INFORMATION: SEE CHARTS.
 - SOLDERABILITY SPECIFICATION: SMES-152
 - RIGHT ANGLE OPTIONS: SEE DRAWING SDA-2145-001.
 - TOP ENTRY OPTIONS: SEE DRAWING SDA-2145-002.
 - .132/3.35 DIMENSION IS CENTER OF TERMINAL TO CENTER OF MATING PIN AND DOES NOT REFLECT CENTER OF THE CONNECTOR HOUSING WINDOW DIMENSION.
 - THIS PART CONFORMS TO CLASS B REQUIREMENTS OF COSMETIC SPECIFICATION PS-45499-002.
 - DIMENSION "C" MEASURED WITH TERMINAL PUSHED IN AGAINST THE STOP.

CKT	A	B	CENTER HOOK(S) LOCATED BETWEEN CIRCUITS
02	.308 7.82	.156±.005 3.96±0.13	NONE
03	.464 11.79	.312±.005 7.92±0.13	NONE
04	.620 15.75	.468±.005 11.89±0.13	NONE
05	.776 19.71	.624±.005 15.85±0.13	NONE
06	.932 23.67	.780±.005 19.81±0.13	NONE
07	1.088 27.64	.936±.010 23.77±0.25	NONE
08	1.244 31.60	1.092±.010 27.74±0.25	4 & 5
09	1.400 35.56	1.248±.010 31.70±0.25	4 & 5
10	1.556 39.52	1.404±.010 35.66±0.25	5 & 6
11	1.712 43.48	1.560±.010 39.62±0.25	5 & 6
12	1.868 47.45	1.716±.010 43.59±0.25	4 & 5, 8 & 9
13	2.024 51.41	1.872±.010 47.55±0.25	6 & 7, 11 & 12
14	2.180 55.37	2.028±.014 51.51±0.36	5 & 6, 9 & 10
15	2.336 59.33	2.184±.014 55.47±0.36	5 & 6, 10 & 11



PCB LAYOUT: COMPONENT SIDE
RECOMMENDED PCB THICKNESS .062/1.57

DIM "C" TOLERANCE	EC NO: UCP2016-2492	2015/12/17
	DRWN:IGES	2016/01/27
	CHKD:MKIPPER	2016/08/25
	APPR:FSMITH	
REV	DESCRIPTION	
AA		

QUALITY SYMBOLS	DESCRIPTION
▽ = 0	
▽ = 0	
▽ = 0	

GENERAL TOLERANCES (UNLESS SPECIFIED)		
	mm	INCH
4 PLACES	± ---	± ---
3 PLACES	± ---	± .010
2 PLACES	± 0.25	± .014
1 PLACE	± 0.36	± ---
0 PLACE	± ---	± ---
ANGULAR ±1/2°		
DRAFT WHERE APPLICABLE MUST REMAIN WITHIN DIMENSIONS		

DIMENSION STYLE	
IN/MM	
DRAWN BY	DATE
SAMIEC	01/16/03
CHECKED BY	DATE
SAMIEC	01/16/03
APPROVED BY	DATE
FSMITH	2016/08/25
MATERIAL NO.	
SEE CHART	
SIZE	
A	

SCALE	DESIGN UNITS	THIRD ANGLE PROJECTION
	INCH	
TITLE		
KK 156 HOUSING ASSY PC TAIL BOTTOM ENTRY		
molex		
DOCUMENT NO.	SHEET NO.	
SDA-2145-003	1 OF 4	

2	AA
1	AA
SHT.	REV.



KK 156 PCB ASSY 2-15 CKT

2145 BOTTOM ENTRY SERIES

OPTIONS	RAMPS	YES	RAMPS	YES
	COLOR:	WHITE	COLOR:	WHITE
	MOLD VOID:	NONE	MOLD VOID:	NONE
	TERM MATL:	PHOS BRONZE	TERM MATL:	PHOS BRONZE
	CONTACT:	STANDARD	CONTACT:	STANDARD
	PC TAIL (C):	.160 / 4.06	PC TAIL (C):	.160 / 4.06
	PLT CODE:	197 – TIN	PLT CODE:	208 – 15 GOLD
	TERM VOID:	NONE	TERM VOID:	NONE
	PACKAGING:	TRAY PK-2145-001	PACKAGING:	TRAY PK-2145-001
Ckt	Material No	Material No		
2	09-62-6024	09-62-4028		
3	09-62-6034	09-62-4038		
4	09-62-6044	09-62-4048		
5	09-62-6054	09-62-4058		
6	09-62-6064	09-62-4068		
7	09-62-6074	09-62-4078		
8	09-62-6084	09-62-4088		
9	09-62-6094	09-62-4098		
10	09-62-6104	09-62-4108		
11	09-62-6114	09-62-4118		
12	09-62-6124	09-62-4128		
13	09-62-6134	09-62-4138		
14	09-62-6144	09-62-4148		
15	09-62-6154	09-62-4158		

REV:	CLARIFY HOOKS ECM 107740 8/22/2016 MKIPPER	TITLE:	SHEET No.
AA		KK 156 PCB ASSY 2145 BOTTOM ENTRY SERIES	- 2 -
DOCUMENT NUMBER:	CREATED / REVISED BY:	CHECKED BY:	APPROVED BY:
SDA-2145-003	MKIPPER	JBELL	FSMITH



KK 156 PCB ASSY 2-15 CKT

2145 BOTTOM ENTRY SERIES

OPTIONS	RAMPS	YES	RAMPS	YES	RAMPS	YES	RAMPS	YES
	COLOR:	WHITE	COLOR:	WHITE	COLOR:	WHITE	COLOR:	WHITE
	MOLD VOID:	NONE	MOLD VOID:	NONE	MOLD VOID:	NONE	MOLD VOID:	NONE
	TERM MATL:	PHOS BRONZE	TERM MATL:	BRASS	TERM MATL:	BRASS	TERM MATL:	BRASS
	CONTACT:	STANDARD	CONTACT:	STANDARD	CONTACT:	STANDARD	CONTACT:	STANDARD
	PC TAIL (C):	.160 / 4.06	PC TAIL (C):	.160 / 4.06	PC TAIL (C):	.160 / 4.06	PC TAIL (C):	.126 / 3.20
	PLT CODE:	P909 – TIN	PLT CODE:	P909 – TIN	PLT CODE:	208 – 15 GOLD	PLT CODE:	P909 – TIN
	TERM VOID:	NONE	TERM VOID:	NONE	TERM VOID:	NONE	TERM VOID:	NONE
	PACKAGING:	TRAY PK-2145-001	PACKAGING:	TRAY PK-2145-001	PACKAGING:	TRAY PK-2145-001	PACKAGING:	TRAY PK-2145-001
Ckt	Material No	Material No	Material No	Material No	Material No	Material No	Material No	
2	09-52-2028	09-52-3022	09-62-3022	09-52-5022				
3	09-52-2038	09-52-3032	09-62-3032	09-52-5032				
4	09-52-2048	09-52-3042	09-62-3042	09-52-5042				
5	09-52-2058	09-52-3052	09-62-3052	09-52-5052				
6	09-52-2068	09-52-3062	09-62-3062	09-52-5062				
7	09-52-2078	09-52-3072	09-62-3072	09-52-5072				
8	09-52-2088	09-52-3082	09-62-3082	09-52-5082				
9	09-52-2098	09-52-3092	09-62-3092	09-52-5092				
10	09-52-2108	09-52-3102	09-62-3102	09-52-5102				
11	09-52-2118	09-52-3112	09-62-3112	09-52-5112				
12	09-52-2128	09-52-3122	09-62-3122	09-52-5122				
13	09-52-2138	09-52-3132	09-62-3132	09-52-5132				
14	09-52-2148	09-52-3142	09-62-3142	09-52-5142				
15	09-52-2158	09-52-3152	09-62-3152	09-52-5152				

REV:	CLARIFY HOOKS ECM 107740 8/22/2016 MKIPPER	TITLE:	KK 156 PCB ASSY 2145 BOTTOM ENTRY SERIES	<u>SHEET No.</u> - 3 -			
AA							
<u>DOCUMENT NUMBER:</u>	SDA-2145-003	<u>CREATED / REVISED BY:</u>	MKIPPER	<u>CHECKED BY:</u>	JBELL	<u>APPROVED BY:</u>	FSMITH



KK 156 PCB ASSY 2-15 CKT

2145 BOTTOM ENTRY SERIES

OPTIONS	RAMPS	YES	RAMPS		RAMPS		RAMPS	
	COLOR:	WHITE	COLOR:		COLOR:		COLOR:	
	MOLD VOID:	NONE	MOLD VOID:		MOLD VOID:		MOLD VOID:	
	TERM MATL:	PHOS BRONZE	TERM MATL:		TERM MATL:		TERM MATL:	
	CONTACT:	STANDARD	CONTACT:		CONTACT:		CONTACT:	
	PC TAIL (C):	.160 / 4.06	PC TAIL (C):		PC TAIL (C):		PC TAIL (C):	
	PLT CODE:	P154 - TIN	PLT CODE:		PLT CODE:		PLT CODE:	
	TERM VOID:	NONE	TERM VOID:		TERM VOID:		TERM VOID:	
	PACKAGING:	TRAY PK-2145-001	PACKAGING:		PACKAGING:		PACKAGING:	
Ckt	Material No		Material No		Material No		Material No	
2	50-30-4405							
3	50-30-4406							
4	50-30-4407							
5	50-30-4408							
6	50-30-4409							
7	50-30-4411							
8	50-30-4412							
9	50-30-4413							
10	50-30-4414							
11	50-30-4415							
12	50-30-4416							
13	50-30-4417							
14	50-30-4418							
15	50-30-4419							

REV: AA	CLARIFY HOOKS ECM 107740 8/22/2016 MKIPPER	TITLE: KK 156 PCB ASSY 2145 BOTTOM ENTRY SERIES	SHEET No. - 4 -
DOCUMENT NUMBER: SDA-2145-003	CREATED / REVISED BY: MKIPPER	CHECKED BY: JBELL	APPROVED BY: FSMITH

X-ON Electronics

Largest Supplier of Electrical and Electronic Components

Click to view similar products for [Headers & Wire Housings](#) category:

Click to view products by [Molex](#) manufacturer:

Other Similar products are found below :

[892-18-020-10-001101](#) [58102-G61-06LF](#) [582553-1](#) [0009485154](#) [009176003701906](#) [0050291907](#) [LY20-4P-DT1-P1E-BR](#) [02.125.8002.8](#)
[609-3404](#) [61062-3](#) [622-0430](#) [622-3653LF](#) [63453-116](#) [636-1030](#) [636-1427](#) [636-3427](#) [636-4007](#) [641938-9](#) [641991-4](#) [644827-2](#) [65817-010LF](#)
[65817-015LF](#) [65863-015LF](#) [66207-023LF](#) [67095-007LF](#) [67601157](#) [68648-049](#) [70.362.1628.0](#) [70-4210](#) [70-4226B](#) [70-4853B](#) [707-5020](#) [707-](#)
[5028](#) [71.350.2428.0](#) [71918-208LF](#) [71961-016LF](#) [733-134](#) [733-162](#) [754199-000](#) [760-3052](#) [787-8014-00](#) [79531-3000](#) [FCN-360C032-B](#) [FCN-](#)
[367T-T012/H](#) [FCN-723D010/2](#) [80.063.4001.1](#) [800-90-001-10-001000](#) [800-90-010-10-002000](#) [801-43-002-10-013000](#) [801-43-006-10-002000](#)