

F

E

D

C

B

A

F

E

D

C

B

A

10

9

8

7

6

5

4

3

2

1

8.5 [216]

1.2 [29]

0.3 [8]

1.0 [26]

0.9 [22]

8.6 [218]

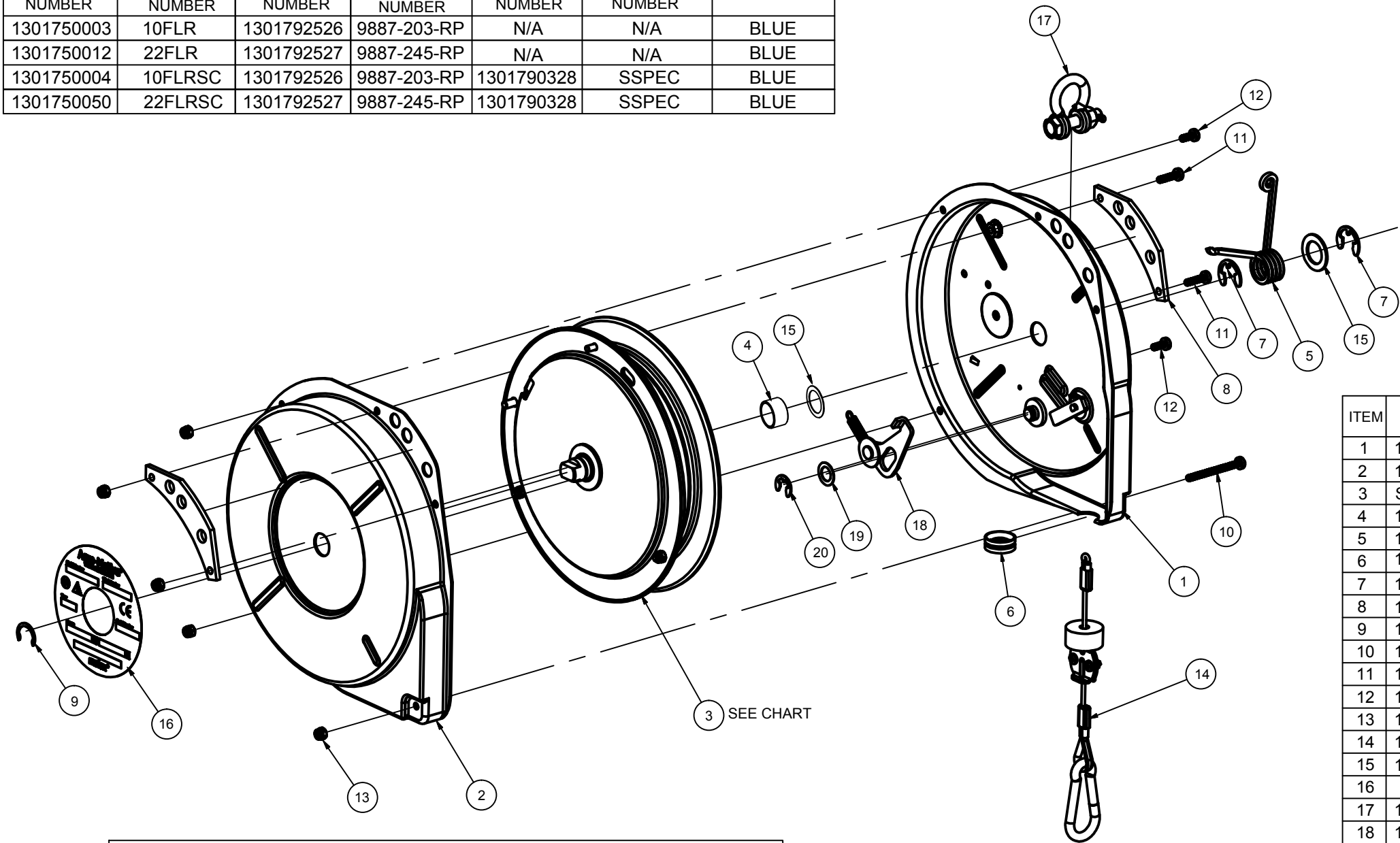
NOTES:

1. RETRACTORS ARE 100% INSPECTED & PRE-TENSIONED AT FACTORY.
2. STEEL HOUSINGS HAVE A POWDER COATED FINISH TO MEET HARSH INDUSTRIAL ENVIRONMENTS.
3. ALWAYS READ INSTRUCTIONS MANUAL BEFORE USING RETRACTORS.
4. RETRACTORS ARE NOT TO BE USED AS BALANCERS THEIR MAIN PURPOSE BEING TO RETRACT A LOAD AND NOT TO BALANCE ONE.
5. STANDARD RETRACTORS DO NOT COME EQUIPPED WITH A SAFETY CHAIN. IF APPLICATION REQUIRES A SAFETY CHAIN ADD "SC" SUFFIX TO STANDARD PART NUMBER. EXAMPLE 5FLRSC.
6. WHEN MOUNTING RETRACTOR, ALWAYS MAKE SURE THAT SAFETY PIN WHICH COMES WITH SHACKLE IS INSTALLED & SECURED.
7. TURN KNOB IS TO BE ENGAGED BY "HAND ONLY". NO TOOLS ARE BE USED TO TURN KNOB. MOVE LOAD UP & DOWN TO ENGAGE KNOB.

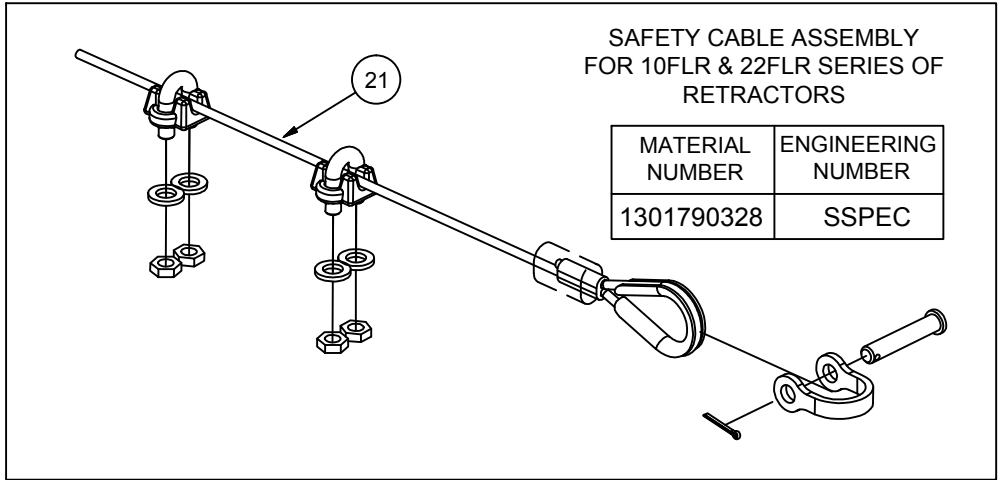
ALL DIMENSIONS ARE FOR REFERENCE ONLY.

UPDATE TO RP PN EC NO: IPG2018-0390 DRWN: VOU 2018/02/22 CHKD: BPATTERS 2018/02/23 APPR: JFMURPHY		DESCRIPTION REV	QUALITY SYMBOLS <div>▽=0</div> <div>▽C=0</div>	GENERAL TOLERANCES (UNLESS SPECIFIED)			DIMENSION STYLE INCH [MM]		SCALE NTS	DESIGN UNITS INCH	THIRD ANGLE PROJECTION	
					mm	INCH	DRAWN BY VOU	DATE 2018/02/22	TITLE 10/22 "FLR" & "FLRSC" SERIES OF RETRACTORS GENERAL INFORMATION			
				4 PLACES	±---	±---	CHECKED BY DT	DATE 2009/09/18				
				3 PLACES	±---	±.005	APPROVED BY ----		DATE ----	MOLEX INCORPORATED		
B				ANGULAR ±.5°			MATERIAL NO. SEE TABLE		DOCUMENT NO. SD-130175-004		SHEET NO. 1 OF 2	
				DRAFT WHERE APPLICABLE MUST REMAIN WITHIN DIMENSIONS			SIZE B	THIS DRAWING CONTAINS INFORMATION THAT IS PROPRIETARY TO MOLEX INCORPORATED AND SHOULD NOT BE USED WITHOUT WRITTEN PERMISSION				

RETRACTOR MODEL:		ITEM #3:		ITEM 21 SAFETY CHAIN USAGE IN ASSEMBY:		RETRACTOR OUTER COLOR
MATERIAL NUMBER	ENGINEERING NUMBER	MATERIAL NUMBER	ENGINEERING NUMBER	MATERIAL NUMBER	ENGINEERING NUMBER	
1301750003	10FLR	1301792526	9887-203-RP	N/A	N/A	BLUE
1301750012	22FLR	1301792527	9887-245-RP	N/A	N/A	BLUE
1301750004	10FLRSC	1301792526	9887-203-RP	1301790328	SSPEC	BLUE
1301750050	22FLRSC	1301792527	9887-245-RP	1301790328	SSPEC	BLUE



ITEM	MATERIAL NUMBER	ENGINEERING NUMBER	ITEM DESCRIPTION
1	1301792525	9886-1-1-RP	RP - HSNG & CAM - 10FLR & 22FLR - BLUE
2	1301792487	9621-1-1-RP	RP - 10F & 22F HOUSING - POWDER BLUE
3	SEE CHART	SEE CHART	10/22 "FLR" ASSY SPRING & CABLE DRUM
4	1301792357	9611-1-RP	RP - SPACER MAIN SHAFT - 10F/2050/1515T
5	1301792354	9616UK-RP	RP - TENSION LOCK SPRING - 10F SERIES
6	1301792485	13613-RP	RP- CABLE GUIDE - STEEL - F SERIES
7	1301792097	AG10310-RP	RP - CIRCLIP E STYLE - F SERIES
8	1301792483	M62710002-RP	RP- UPPER MOUNT BRACKET - 10/22F SERIES
9	1301792100	580-P-35-RP	RP - EXTERNAL CIRCLIP - SHAFT [0.625in]
10	1301792197	AG14614-RP	RP - M4 x 45LG POZI PHILLIPS HEAD
11	1301792528	AG14613-RP	RP - M4 x 16LG POZI PHILLIPS HEAD
12	1301792529	AG14612-RP	RP - M4 x 10LG POZI PHILLIPS HEAD
13	1301792530	AG14615-RP	RP - M4 NYLOC NUT
14	1301792156	CBRP-22F-8	RP - REPLACEMENT CABLE ASSY - 10F & 22F
15	1301792355	14099-RP	RP - WASHER [0.63X0.88X0.02] - F SERIES
16	N/A	N/A	ROUND LABEL
17	1301792484	1240-P-10-RP	RP - SHACKLE[NUT & SAFETY PIN] - F SERIES
18	1301792177	9674-2-RP	RP - SCROLL LOCK LEVER ASEMBLY - F SERIES
19	1301792430	AG18769-RP	RP - SHIM WASHER - WORM SHAFT - JK SERIES
20	1301792308	580-P-30-RP	RP - 3/8 SHAFT - EXT CIRCLIP - F SERIES
21	SEE CHART	SEE CHART	SAFETY CABLE ASSY SEE CHART FOR USAGE



UPDATE TO RP PN EC NO: IPG2018-0390 DRWN: VOU CHKD: BPATTERS APPR: JFMURPHY		DESCRIPTION REV	QUALITY SYMBOLS <div>▽=0</div> <div>▽C=0</div>	GENERAL TOLERANCES (UNLESS SPECIFIED)			DIMENSION STYLE INCH [MM]		SCALE NTS	DESIGN UNITS INCH	THIRD ANGLE PROJECTION <div>⊙</div> <div>□</div>		
					mm	INCH	DRAWN BY VOU	DATE 2018/02/22	TITLE 10/22 "FLR" & "FLRSC" SERIES OF RETRACTORS GENERAL INFORMATION				
				4 PLACES	±---	±---	CHECKED BY DT	DATE 2009/09/18					
				3 PLACES	±---	±.005	APPROVED BY DATE ---		molex MOLEX INCORPORATED				
				2 PLACES	±0.13	±.010							
				1 PLACE	±0.26	±.020	MATERIAL NO. SEE TABLE		DOCUMENT NO. SD-130175-004		SHEET NO. 2 OF 2		
B			DRAFT WHERE APPLICABLE MUST REMAIN WITHIN DIMENSIONS			SIZE B	THIS DRAWING CONTAINS INFORMATION THAT IS PROPRIETARY TO MOLEX INCORPORATED AND SHOULD NOT BE USED WITHOUT WRITTEN PERMISSION						

X-ON Electronics

Largest Supplier of Electrical and Electronic Components

Click to view similar products for [Fiber Optic Connectors](#) category:

Click to view products by [Molex](#) manufacturer:

Other Similar products are found below :

[0004700001](#) [6100-R](#) [6313](#) [F709034706](#) [F709722200](#) [F718183204](#) [F727403500](#) [F727752800](#) [FCXO-12-3BY](#) [FO-SCREW\(M2X6\)](#) [9440F20-27S-190](#) [944-120-6001](#) [944-125-6003](#) [9441F10SL-3S](#) [9446F10SL-4S](#) [953-101-5310-P](#) [954-101-57202B](#) [A0270169](#) [12-9122](#) [12-5702](#) [143025NC](#) [AX101713](#) [AX102420](#) [AX103923](#) [AX104141](#) [AX104193](#) [AX104228](#) [AX104230](#) [AX104562](#) [AX105203-B25](#) [AX105205-S1](#) [EHSC2M](#) [17-300800](#) [181-011-126](#) [BT34IW](#) [HRFCP-HSCJ-1\(61\)](#) [HRFC-R2\(40\)](#) [NKSOPBUY](#) [20500002116](#) [2064996-1](#) [20800001065](#) [2170](#) [9132](#) [2612](#) [2620](#) [9291](#) [9440F18-19S](#) [9440F20-14P](#) [9440F20-14PW](#) [9440W18-1S](#)