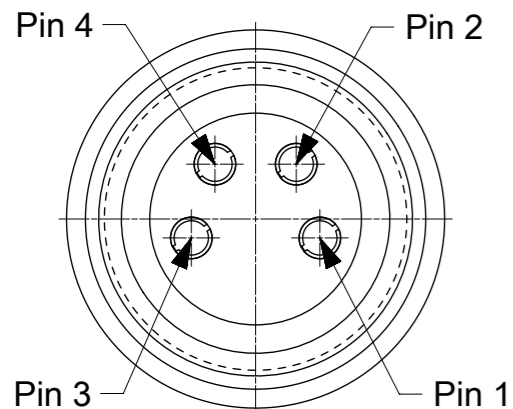
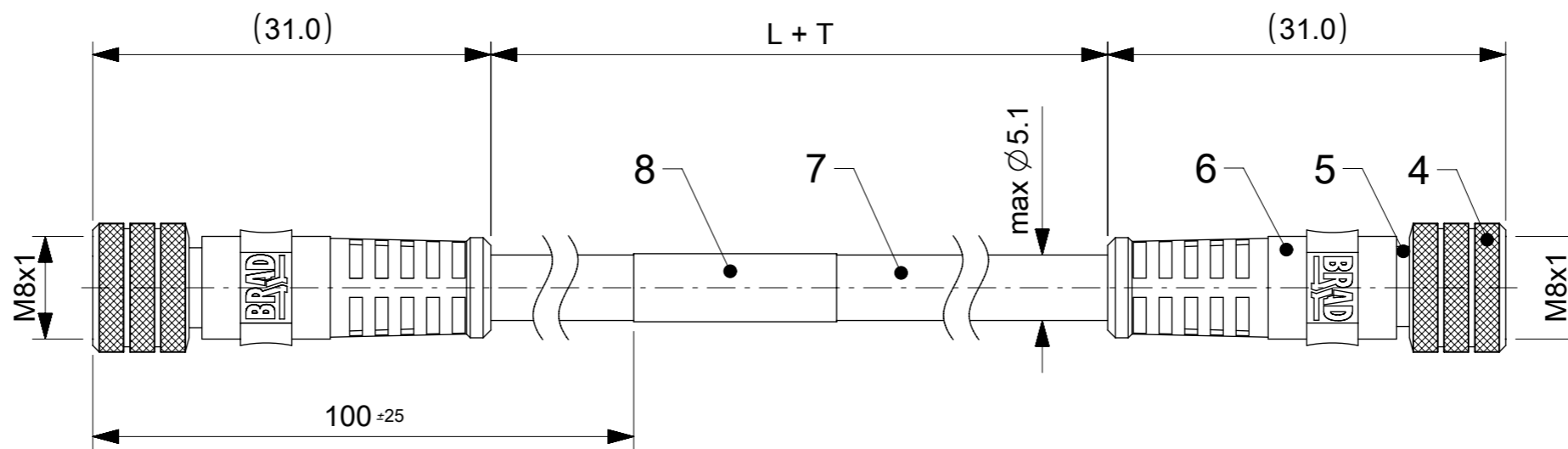


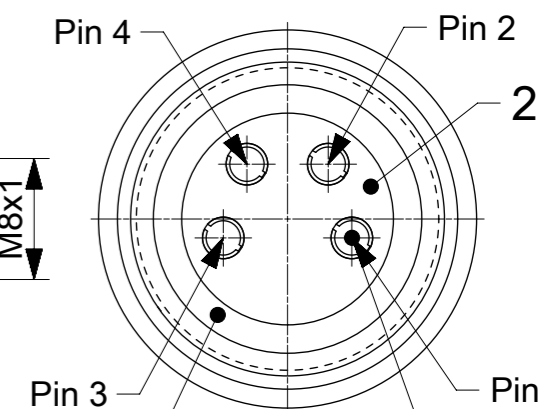
FEMALE CONNECTOR
PIN ASSIGNMENT
FRONT VIEW



SCALE 5:1

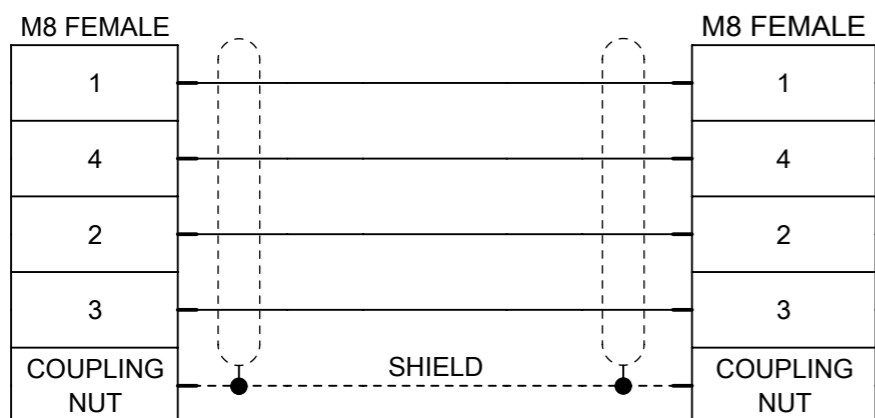


FEMALE CONNECTOR
PIN ASSIGNMENT
FRONT VIEW



SCALE 5:1

WIRING DIAGRAM



TWISTING:

4 CORES ARE TWISTED TO A STARQUAD:
PAIR 1: PIN 1/PIN 4
PAIR 2: PIN 2/PIN 3

FOR OPTIONS SEE - NUMERICAL CODE - ON SHEET 2

ITEM	QTY	DESCRIPTION	MATERIAL	FINISH
8	1	LABEL	VINYL	-
7	L + T	CABLE 1x4xAWG26 GREEN	PUR	-
6	2	OVERMOULD BLACK	TPU	-
5	2	SLEEVE SHLD	BRASS	Ni
4	2	COUPLING NUT M8 FEMALE	BRASS	Ni
3	2	ORING RED	FKM	-
2	2	INSERT M8 FEMALE 4P BLACK	PA	-
1	8	CONTACT M8 FEMALE	BRASS	Selective Au over Ni

NOTES

1. RATED VOLTAGE: 30 V AC/DC
2. RATED CURRENT: 3 A
3. OPERATION TEMPERATURE: -20°C TO +80°C
4. INTERNATIONAL PROTECTION MARKING: IP67
5. CATEGORY: BASED ON CAT5
6. PACKAGING: 24 PIECES PER CARTON, WITHOUT PLASTIC BAG.

<p>QUALITY SYMBOLS</p> <p>FA = 0</p> <p>FE = 0</p> <p>FB = 0</p> <p>FC = 0</p> <p>FD = 0</p> <p>FE = 0</p> <p>FF = 0</p> <p>FG = 0</p> <p>FH = 0</p> <p>FI = 0</p> <p>FJ = 0</p> <p>FK = 0</p> <p>FL = 0</p>	<p>THIS DRAWING CONTAINS INFORMATION THAT IS PROPRIETARY TO MOLEX ELECTRONIC TECHNOLOGIES, LLC AND SHOULD NOT BE USED WITHOUT WRITTEN PERMISSION</p>		<p>DIMENSION UNITS: mm</p> <p>SCALE: 2:1</p>			
	<p>GENERAL TOLERANCES (UNLESS SPECIFIED)</p> <p>ANGULAR TOL ± 1.0 °</p>		<p>DRWN BY: JMARSZALEK</p> <p>DATE: 2016/04/26</p>			<p>CSE M8 M8 4P AC FE STR PUR FE STR XM</p>
	<p>4 PLACES ±</p> <p>3 PLACES ±</p> <p>2 PLACES ± 0.05</p> <p>1 PLACE ± 0.3</p> <p>0 PLACES ± 0.5</p>		<p>CHK'D BY: RSILLER</p> <p>DATE: 2016/06/09</p>			
	<p>DRAFT WHERE APPLICABLE MUST REMAIN WITHIN DIMENSIONS</p>		<p>APPR BY: RSILLER</p> <p>DATE: 2016/06/09</p>			<p>SERIES: 120359</p> <p>MATERIAL NUMBER: SEE SHEET 2</p> <p>CUSTOMER: GENERAL MARKET</p>
<p>EC NO: 105621</p> <p>DRWN: JMARSZALEK</p> <p>CHK'D: RSILLER</p> <p>REV APPR: RSILLER</p>		<p>DRAWING SIZE: A3</p> <p>THIRD ANGLE PROJECTION</p>		<p>DOCUMENT NUMBER: 1203595000</p> <p>DOC TYPE: PSD</p> <p>DOC PART: 000</p> <p>SHEET NUMBER: 1 OF 2</p>		

NUMERICAL CODE (Available parts see PART LIST table. Other parts available upon request).

OPTIONS

E 4 4 A 0 1 0 X X M X X X X

E=Ethernet/
EtherCat

Heads:
4=M8 A-Coding
4=M8 A-Coding

Heads style:
010=Female STR
/ Female STR

Cable type:
See cable table

Units:
M=Meter
T=10x meter

Length
Examples:
005=0.5 units
010=1 units
150=15 units

H= 2 pcs. of
I/D Carrier

Wiring type:
A=4 Pole (Straight Wired)

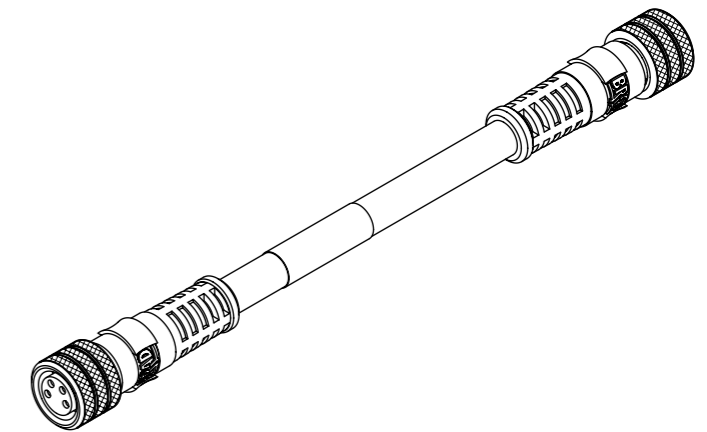
CABLE INFORMATION (for more information see Cable Data Sheet).

CABLE TYPE	NO. OF WIRES	CROSS SECTION	CABLE JACKET	UL/CSA	STATIC: TEMP. / BENDING RADIUS	DYNAMIC: TEMP. / BENDING RADIUS	SHIELD
20	4	AWG26 (0.15mm ²)	PUR GREEN	80°C, 30V	-20°C to +80°C, 7.5xO.D.	-20°C to +50°C, 12xO.D.	YES

PART LIST

No.	Molex P/N	Engineering no.	Cable Length "L"
1	1203595000	E44A01020M006	600
2	1203595001	E44A01020M010	1000
3	1203595002	E44A01020M020	2000
4	1203595003	E44A01020M030	3000
5	1203595004	E44A01020M050	5000
6	1203595005	E44A01020M075	7500
7	1203595006	E44A01020M100	10000
8	1203595007	E44A01020M120	12000
9	1203595008	E44A01020M150	15000
10	1203595009	E44A01020M200	20000

CABLE LENGTH TOLERANCES "T"		
LENGTH	TOLERANCE	
shorter than 1m	+40 mm	-0 mm
1m-5m	+60 mm	-0 mm
5m-10m	+80 mm	-0 mm
10m-20m	+140 mm	-0 mm
20m-30m	+160 mm	-0 mm
longer than 30m	+1%	-0 mm



SCALE 1:1

THIS DRAWING CONTAINS INFORMATION THAT IS PROPRIETARY TO MOLEX ELECTRONIC TECHNOLOGIES, LLC AND SHOULD NOT BE USED WITHOUT WRITTEN PERMISSION													
QUALITY SYMBOLS □ = 0 ▽ = 0 ▽ = 0 ▽ = 0 ▽ = 0 ▽ = 0 ▽ = 0 ▽ = 0 ▽ = 0 ▽ = 0 ▽ = 0	2016/04/26 2016/06/09 2016/06/09 EC NO: 105621 DRWN: JMARSZALEK CHK'D: RSILLER REV APPR: RSILLER	GENERAL TOLERANCES (UNLESS SPECIFIED) ANGULAR TOL ± 1.0 °		DIMENSION UNITS	SCALE								
		4 PLACES ± 3 PLACES ± 2 PLACES ± 0.05 1 PLACE ± 0.3 0 PLACES ± 0.5		mm	1:1								
		DRAFT WHERE APPLICABLE MUST REMAIN WITHIN DIMENSIONS		DRWN BY: JMARSZALEK DATE: 2016/04/26		CHK'D BY: RSILLER DATE: 2016/06/09		PRODUCT CUSTOMER DRAWING					
		DRAWING SIZE: A3 THIRD ANGLE PROJECTION		APPR BY: RSILLER DATE: 2016/06/09		SERIES	MATERIAL NUMBER	CUSTOMER					
		RELEASE STATUS: P1 RELEASE DATE: 2016/06/09 12:35:14		A		A3	120359	SEE PART LIST	GENERAL MARKET				
				DOCUMENT NUMBER: 1203595000 DOC TYPE: PSD DOC PART: 000 SHEET NUMBER: 2 OF 2									

X-ON Electronics

Largest Supplier of Electrical and Electronic Components

Click to view similar products for [Sensor Cables / Actuator Cables](#) category:

Click to view products by [Molex](#) manufacturer:

Other Similar products are found below :

[60963](#) [60964](#) [703000D02F2002](#) [703001D02F0602](#) [703001D02F300](#) [704000D02F120](#) [773032K02F030](#) [802027107404-1](#) [802027213811-1](#)
[804001A09M150](#) [805001A09M0502](#) [84914-0235](#) [84914-0237](#) [885030A09M020](#) [8R4J30E03C3003](#) [1200651332](#) [1200651713](#) [1200660844](#)
[1200660845](#) [1200661173](#) [1200680071](#) [1200720053](#) [1200720081](#) [1200720099](#) [1200720217](#) [1200800231](#) [1200860125](#) [1200870123](#)
[1200980102](#) [1200650267](#) [1200650298](#) [1200660183](#) [1200660782](#) [1200660849](#) [1200661295](#) [1200661297](#) [1200661342](#) [1200661343](#)
[1200670080](#) [1200670220](#) [1200680331](#) [1200720252](#) [1200730184](#) [1200860344](#) [1200870359](#) [1200870643](#) [1200980008](#) [1200980031](#)
[1210502211](#) [1210400542](#)