

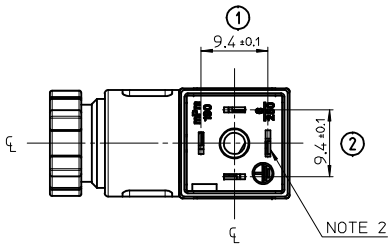
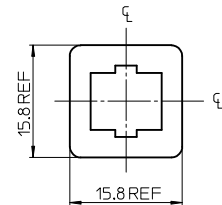
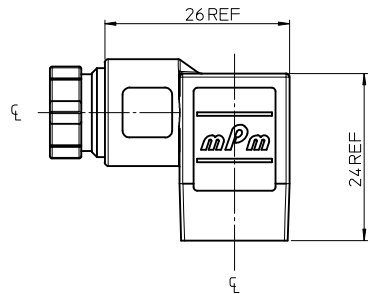
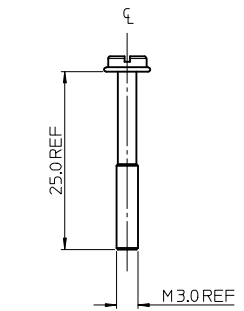
ITEM	DESCRIPTION
1	SCREW
2	COVER ASSEMBLY
3	INSERT ASSEMBLY
4	GASKET

C19307N22\*\*

SERIES  
C19= INTERNAL THREAD FORM C MICRO  
POLES  
2= 2 POLE, 3= 3 POLE  
THREAD SIZE  
07= PG7, M2=M12x1.5  
MATERIAL AND HOUSING COLOUR  
G= PA6 GRAY, N= PA6 BLACK, W= PA6 BLACK V0, T= TRANSPARENT  
GROUND POSITION  
0= UNMOUNTED, 2= H12, 3= H3, 6= H6, 9= H9

SCREW AND GASKET  
1= NBR PROFILE GASKET & SCREW  
2= NBR FLAT GASKET & SCREW  
3= WHITE SILICON PROFILE GASKET & SCREW  
4= WHITE SILICON FLAT GASKET & SCREW  
6= NBR FLAT GASKET, NO SCREW  
A= NBR PROFILE GASKET & SCREW +2mm  
B= NBR FLAT GASKET & SCREW +2mm  
C= WHITE SILICON PROFILE GASKET & SCREW +2mm  
D= WHITE SILICON FLAT GASKET & SCREW +2mm

NON STANDARD COMPONENTS  
14= SINGLE PACKED IN NEUTRAL BAG  
5N= SINGLE PACKED  
6X= WITHOUT RING NUT OR CABLE FIXING NUT  
P7= IP67 COMPLIANT  
SA= UL LISTED  
0217= THREE BAGS OF 100 PER BOX



NOTES  
1. PLEASE SEE SHEET 2 FOR CURRENTLY CONFIGURED PART NUMBERS.  
FOR SPECIFIC PART NUMBERS PLEASE CONTACT SALES OR CONSULT  
THE INTELLIGENT PART NUMBERS IN THE TABLE ATTACHED.  
2. EARTH POSITION SHOWN, H12  
3. FOR PACKAGING SEE PACKAGING SPEC PK-121023-C19  
4. PRODUCT SPEC: SEE PS-121201-001  
5. PART NO 1210230465 SHOWN FOR ILLUSTRATION PURPOSES ONLY

LAST INSPECTION NUMBER 2

ADDED PART NUMBERS		QUALITY SYMBOLS		GENERAL TOLERANCES (UNLESS SPECIFIED)		DIMENSION STYLE		SCALE		DESIGN UNITS		THIRD ANGLE PROJECTION	
REV		DESCRIPTION		mm		MM ONLY		2:1		METRIC		□	
C		DESCRIPTION		mm		DRAWN BY DSHEA		DATE 2011/05/18		TITLE		INTERNAL THREAD C19 SERIES	
				±---		DATE 2011/05/18							
				±0.10		CHECKED BY DMAHER		DATE 2011/05/27					
				±0.2		APPROVED BY EFOLAN		DATE 2011/06/08		MATERIAL NO.		DOCUMENT NO.	
				±---		MATERIAL NO.		DATE		SEE SHEET 2		SD-121023-005	
				ANGULAR ±---°		MATERIAL NO.				MATERIAL NO.		SHEET NO.	
				DRAFT WHERE APPLICABLE MUST REMAIN WITHIN DIMENSIONS		MATERIAL NO.				MATERIAL NO.		1 OF 2	
						SIZE		A2		THIS DRAWING CONTAINS INFORMATION THAT IS PROPRIETARY TO MOLEX INCORPORATED AND SHOULD NOT BE USED WITHOUT WRITTEN PERMISSION			

PART NO	mPm PART NO	DESCRIPTION
1210230431	C19207G62	TYPE C MICRO 2P PG7 GRAY, NBR FLAT GASKET & SCREW
1210230433	C19207N21	TYPE C MICRO 2P PG7 BLACK, NBR PROFILE GASKET & SCREW
1210230434	C19207N22	TYPE C MICRO 2P PG7 BLACK, NBR FLAT GASKET & SCREW
1210230435	C19207N26	TYPE C MICRO 2P PG7 BLACK, NBR FLAT GASKET, NO SCREW
1210230437	C19207N61	TYPE C MICRO 2P PG7 BLACK, NBR PROFILE GASKET & SCREW
1210230438	C19207N62	TYPE C MICRO 2P PG7 BLACK, NBR FLAT GASKET & SCREW
1210230441	C19207N6A	TYPE C MICRO 2P PG7 BLACK, NBR PROFILE GASKET & SCREW +2mm
1210230443	C19207N6B	TYPE C MICRO 2P PG7 BLACK, NBR FLAT GASKET & SCREW +2mm
1210230445	C19207N92	TYPE C MICRO 2P PG7 BLACK, NBR FLAT GASKET & SCREW
1210230447	C19207T22	TYPE C MICRO 2P PG7 TRANSPARENT, NBR FLAT GASKET & SCREW
1210230454	C19207W62	TYPE C MICRO 2P PG7 BLACK V0, NBR FLAT GASKET & SCREW
1210230463	C19307G62	TYPE C MICRO 3P PG7 GRAY, NBR FLAT GASKET & SCREW
1210230464	C19307N21	TYPE C MICRO 3P PG7 BLACK, NBR PROFILE GASKET & SCREW
1210230465	C19307N22	TYPE C MICRO 3P PG7 BLACK, NBR FLAT GASKET & SCREW
1210230466	C19307N61	TYPE C MICRO 3P PG7 BLACK, NBR PROFILE GASKET & SCREW
1210230467	C19307N62	TYPE C MICRO 3P PG7 BLACK, NBR FLAT GASKET & SCREW
1210230469	C19307N64	TYPE C MICRO 3P PG7 BLACK, WHITE SILICONE FLAT GASKET & SCREW
1210230470	C19307N6A	TYPE C MICRO 3P PG7 BLACK, NBR PROFILE GASKET & SCREW +2mm
1210230472	C19307N6B	TYPE C MICRO 3P PG7 BLACK, NBR FLAT GASKET, & SCREW +2mm
1210230474	C19307T22	TYPE C MICRO 3P PG7 TRANSPARENT, NBR FLAT GASKET & SCREW
1210230476	C19307T62	TYPE C MICRO 3P PG7 TRANSPARENT, NBR FLAT GASKET & SCREW
1210230672	C192M2N62	TYPE C MICRO 2P M12x1.5 BLACK, NBR FLAT GASKET & SCREW
1210230673	C193M2N62	TYPE C MICRO 3P M12x1.5 BLACK, NBR FLAT GASKET & SCREW
1210230693	C19307N23	TYPE C MICRO 3P PG7 BLACK, WHITE SILICONE PROFILE GASKET & SCREW
1210230752	C19307N24	TYPE C MICRO 3P PG7 BLACK, WHITE SILICONE FLAT GASKET & SCREW
1210230753	C192M2N21	TYPE C MICRO 2P M12x1.5 BLACK, NBR PROFILE GASKET & SCREW
1210240292	C19207N625N	TYPE C MICRO 2P PG7 BLACK, NBR FLAT GASKET & SCREW, SINGLE PACKED
1210240293	C19207N626X	TYPE C MICRO 2P PG7 BLACK, NBR FLAT GASKET & SCREW, W/O RING NUT
1210240307	C19207W6D	TYPE C MICRO 2P PG7 BLACK V0, WHITE SILICONE FLAT GASKET & SCREW +2mm
1210240921	C19207N2214	TYPE C MICRO 2P PG7 BLACK, NBR FLAT GASKET & SCREW, SINGLE PACKED IN NEUTRAL BAG
1210240938	C19307N21P7	TYPE C MICRO 3P PG7 BLACK, NBR PROFILE GASKET & SCREW, IP67 COMPLIANT
1210230651	C19207W62SA	TYPE C MICRO 2P PG7 BLACK V0, NBR FLAT GASKET & SCREW, UL LISTED
1210230818	C19207W21SA	TYPE C MICRO 2P PG7 BLACK V0, NBR PROFILE GASKET & SCREW, UL LISTED
1210230839	C19207W93SA	TYPE C MICRO 2P PG7 BLACK V0, WHITE SILICONE PROFILE GASKET & SCREW, UL LISTED
1210240937	C19307W22SA	TYPE C MICRO 3P PG7 BLACK V0, NBR FLAT GASKET & SCREW, UL LISTED
1210240884	C19207W620217	TYPE C MICRO 2P PG7 BLACK V0, H6 NBR FLAT GASKET & SCREW THREE BAGS OF 100 PER BOX

<b>SEE SHEET 1</b> EC NO: IPG2014-1003 DRAWN: KIMORNOYLE 2013/12/02 CHKD: DSHEA 2013/12/02 APPR: STGERLFIN 2014/01/08	DESCRIPTION REV: C	<b>QUALITY SYMBOLS</b> ▽=0 ▽=0	<b>GENERAL TOLERANCES (UNLESS SPECIFIED)</b> <table border="1"> <thead> <tr> <th></th> <th>mm</th> <th>INCH</th> </tr> </thead> <tbody> <tr><td>4 PLACES</td><td>±.005</td><td>±.0004</td></tr> <tr><td>3 PLACES</td><td>±.008</td><td>±.0003</td></tr> <tr><td>2 PLACES</td><td>±0.10</td><td>±.004</td></tr> <tr><td>1 PLACE</td><td>±0.2</td><td>±.008</td></tr> </tbody> </table>		mm	INCH	4 PLACES	±.005	±.0004	3 PLACES	±.008	±.0003	2 PLACES	±0.10	±.004	1 PLACE	±0.2	±.008	<b>DIMENSION STYLE</b> <b>MM ONLY</b>	<b>SCALE</b> <b>2:1</b>	<b>DESIGN UNITS</b> <b>METRIC</b>	<b>THIRD ANGLE PROJECTION</b>
			mm	INCH																		
		4 PLACES	±.005	±.0004																		
		3 PLACES	±.008	±.0003																		
2 PLACES	±0.10	±.004																				
1 PLACE	±0.2	±.008																				
		<table border="1"> <thead> <tr> <th>DRAWN BY</th> <th>DATE</th> <th>TITLE</th> </tr> </thead> <tbody> <tr> <td>DSHEA</td> <td>2011/05/18</td> <td rowspan="2"><b>INTERNAL THREAD C19 SERIES</b></td> </tr> <tr> <td>CHECKED BY</td> <td>DATE</td> </tr> <tr> <td>DMAHER</td> <td>2011/05/27</td> <td></td> </tr> </tbody> </table>	DRAWN BY	DATE	TITLE	DSHEA	2011/05/18	<b>INTERNAL THREAD C19 SERIES</b>	CHECKED BY	DATE	DMAHER	2011/05/27										
DRAWN BY	DATE	TITLE																				
DSHEA	2011/05/18	<b>INTERNAL THREAD C19 SERIES</b>																				
CHECKED BY	DATE																					
DMAHER	2011/05/27																					
		<b>DRAFT WHERE APPLICABLE MUST REMAIN WITHIN DIMENSIONS</b>	<table border="1"> <thead> <tr> <th>APPROVED BY</th> <th>DATE</th> </tr> </thead> <tbody> <tr> <td>EFOLAN</td> <td>2011/06/08</td> </tr> </tbody> </table>	APPROVED BY	DATE	EFOLAN	2011/06/08	<b>MOLEX INCORPORATED</b>														
APPROVED BY	DATE																					
EFOLAN	2011/06/08																					
		<b>SEE TABLE</b>	<b>MATERIAL NO.</b> SD-121023-005	<b>DOCUMENT NO.</b> SD-121023-005	<b>SHEET NO.</b> 2 OF 2																	

## X-ON Electronics

Largest Supplier of Electrical and Electronic Components

*Click to view similar products for [Circular DIN Connectors](#) category:*

*Click to view products by [Molex](#) manufacturer:*

Other Similar products are found below :

[60KD4M](#) [CTVP00RW-19-32S\(506\)](#) [M83723/76W22326](#) [M83723/78R22327](#) [D38999/26FE99SN L/C](#) [75-069228-21J](#) [7547401103P](#) [75-474014-07L](#) [88-559975-75P](#) [8R3006A18M0033](#) [PT02E1283P](#) [GTC00G-24-7S](#) [PT05A-14-5SX](#) [PT05A1832SW](#) [PT05E2255PW](#) [PT05SE1832SWLC](#) [PT05SE1832SYLC](#) [GTC030-20-27PW-LC](#) [GTC030A-20-33S](#) [PT06SE1811SXLC](#) [1211290078](#) [1211810025](#) [1210120122](#) [ACC06AF-20-23P\(003\)](#) [1210503216](#) [1211290084](#) [1211500027](#) [ACS06AF-16-10P\(003\)](#) [D38999/40FB35AN](#) [D38999/40FB35BB](#) [D38999/40WB35BN](#) [D38999/40WD35PN](#) [D38999/40WJ29SN-L/C](#) [D38999/40WJ4BN](#) [D38999/42FB35BN](#) [D38999/42WB35AB](#) [D38999/42WB35PB-L/C](#) [D38999/42WJ19AN](#) [D38999/42WJ24PN-L/C](#) [D38999/44WB35AN](#) [D38999/44WD35BN](#) [D38999/44WH21AN](#) [D38999/44WH35AN](#) [D38999/44WJ29BA](#) [D38999/44WJ35PN](#) [D38999/44WJ61BA](#) [D38999/46FB35AC](#) [D38999/46FB35BN](#) [D38999/46FB35SA-L/C](#) [D38999/46FB99BA](#)