

ITEM	DESCRIPTION
1	SCREW
2	COVER ASSEMBLY
3	PCB
4	INSERT ASSEMBLY
5	GASKET

S19207TA022\*\*

SERIES  
 S19= INTERNAL THREAD FORM C MICRO  
 POLES  
 2= 2 POLE & 3= 3 POLE  
 THREAD  
 07= PG7, M2= M12x1.5  
 MATERIAL AND HOUSING COLOUR  
 G= PA6 GRAY, N= PA6 BLACK, W= PA6 BLACK VO,  
 T= PA12 TRANSPARENT, B= PA6 WHITE  
 CIRCUIT  
 SEE DETAILS IN CATALOGUE  
 VOLTAGE  
 SEE DETAILS IN CATALOGUE  
 SCREW AND GASKET  
 1= NBR PROFILE GASKET & SCREW  
 2= NBR FLAT GASKET & SCREW  
 3= WHITE SILICON PROFILE GASKET & SCREW  
 4= WHITE SILICON FLAT GASKET & SCREW  
 A= NBR PROFILE GASKET & SCREW +2mm  
 B= NBR FLAT GASKET & SCREW +2mm  
 NON STANDARD COMPONENTS  
 14= PACKED IN NEUTRAL BAG  
 5N= PACKED IN BOXES OF 200

- NOTES
- PLEASE SEE SHEET 2 FOR CURRENTLY CONFIGURED PART NUMBERS. FOR SPECIFIC PART NUMBERS PLEASE CONTACT SALES OR CONSULT THE INTELLIGENT PART NUMBERS IN THE TABLE ATTACHED.
  - EARTH POSITION SHOWN, H6.
  - FOR PACKAGING SEE PACKAGING SPEC PK 121065-S19
  - PRODUCT SPEC: SEE PS-121201-001

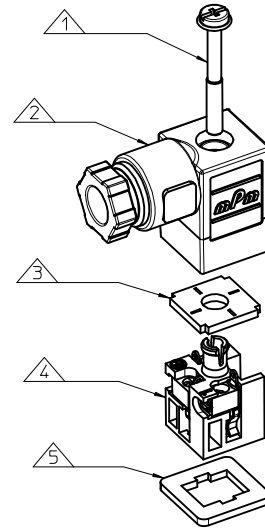
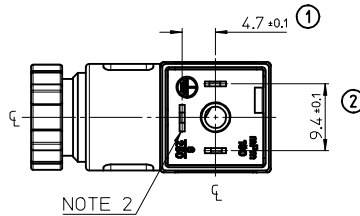
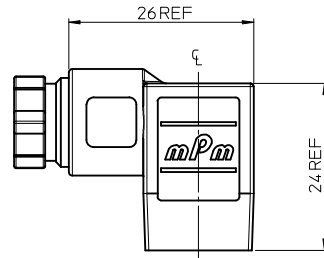
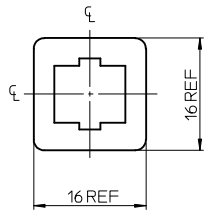
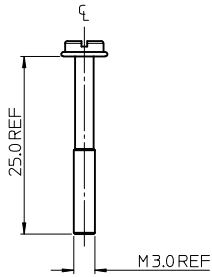
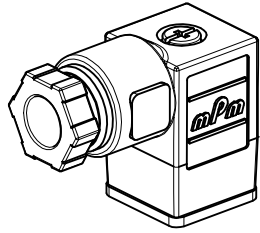
LAST INSPECTION NUMBER 2

<b>REMOVED PART NO:</b> EC NO: IPG2014-4527 DRW:KORNOYLE 2014/02/26 CHK:D:OSHEA 2014/03/06 APPR:STIGLIEFFIN 2014/04/01	QUALITY SYMBOLS	GENERAL TOLERANCES (UNLESS SPECIFIED)	DIMENSION STYLE	SCALE	DESIGN UNITS	THIRD ANGLE PROJECTION
	$\nabla=0$ $\nabla=0$	mm INCH 4 PLACES ± --- ± --- 3 PLACES ± --- ± --- 2 PLACES ± 0.10 ± --- 1 PLACE ± 0.20 ± --- ANGULAR ± 2 °	MM ONLY	2:1	METRIC	
	DESCRIPTION	DRAFT WHERE APPLICABLE MUST REMAIN WITHIN DIMENSIONS	DRAWN BY JOCONNOR CHECKED BY DMAHER APPROVED BY EFOLAN DATE 2011/05/18 DATE 2011/05/18 DATE 2011/06/07	TITLE	S19 SERIES INTERNAL THREAD	
	REV		MATERIAL NO.	DOCUMENT NO.	MOLEX INCORPORATED SD-121064-003	

SEE SHEET 2  
 THIS DRAWING CONTAINS INFORMATION THAT IS PROPRIETARY TO MOLEX INCORPORATED AND SHOULD NOT BE USED WITHOUT WRITTEN PERMISSION

PART No.	mPm PART No.	DESCRIPTION	CIRCUIT	VOLTAGE	COLOUR
1210640794	S19207NE052	TYPE C MICRO 2P PG7 BLACK NBR FLAT GASKET	E0	230V	DIODE
1210640798	S19207TA022	TYPE C MICRO 2P PG7 TRANSPARENT NBR FLAT GASKET	A0	24V	RED LED/LAMP
1210640804	S19207TA052	TYPE C MICRO 2P PG7 TRANSPARENT NBR FLAT GASKET	A0	230V	RED LED/LAMP
1210640807	S19207TA11A	TYPE C MICRO 2P PG7 TRANSPARENT NBR PROFILE GASKET & SCREW +2mm	A1	12V	RED LED/LAMP
1210640808	S19207TA121	TYPE C MICRO 2P PG7 TRANSPARENT NBR PROFILE GASKET	A1	24V	RED LED/LAMP
1210640809	S19207TA122	TYPE C MICRO 2P PG7 TRANSPARENT NBR FLAT GASKET	A1	24V	RED LED/LAMP
1210640812	S19207TA12A	TYPE C MICRO 2P PG7 TRANSPARENT NBR PROFILE GASKET & SCREW +2mm	A1	24V	RED LED/LAMP
1210640818	S19207TA142	TYPE C MICRO 2P PG7 TRANSPARENT NBR FLAT GASKET	A1	115V	RED LED/LAMP
1210640820	S19207TA14A	TYPE C MICRO 2P PG7 TRANSPARENT NBR PROFILE GASKET & SCREW +2mm	A1	115V	RED LED/LAMP
1210640825	S19207TA1B2	TYPE C MICRO 2P PG7 TRANSPARENT NBR FLAT GASKET	A1	24V	GREEN LED
1210640828	S19207TC022	TYPE C MICRO 2P PG7 TRANSPARENT NBR FLAT GASKET	C0	24V	RED LED/LAMP
1210640834	S19207TC122	TYPE C MICRO 2P PG7 TRANSPARENT NBR FLAT GASKET	C1	24V	RED LED/LAMP
1210640838	S19207TC321	TYPE C MICRO 2P PG7 TRANSPARENT NBR PROFILE GASKET	C3	24V	RED LED/LAMP
1210640839	S19207TC322	TYPE C MICRO 2P PG7 TRANSPARENT NBR FLAT GASKET	C3	24V	RED LED/LAMP
1210640846	S19207TC3H1	TYPE C MICRO 2P PG7 TRANSPARENT NBR PROFILE GASKET	C3	24V	AMBER LED
1210640847	S19207TC3H2	TYPE C MICRO 2P PG7 TRANSPARENT NBR FLAT GASKET	C3	24V	AMBER LED
1210640851	S19207TC42	TYPE C MICRO 2P PG7 TRANSPARENT NBR FLAT GASKET	C4	12V	RED LED/LAMP
1210640852	S19207TC421	TYPE C MICRO 2P PG7 TRANSPARENT NBR PROFILE GASKET	C4	24V	RED LED/LAMP
1210640853	S19207TC422	TYPE C MICRO 2P PG7 TRANSPARENT NBR FLAT GASKET	C4	24V	RED LED/LAMP
1210640854	S19207TC42A	TYPE C MICRO 2P PG7 TRANSPARENT NBR PROFILE GASKET & SCREW +2mm	C4	24V	RED LED/LAMP
1210640857	S19207TC441	TYPE C MICRO 2P PG7 TRANSPARENT NBR PROFILE GASKET	C4	115V	RED LED/LAMP
1210640858	S19207TC442	TYPE C MICRO 2P PG7 TRANSPARENT NBR FLAT GASKET	C4	115V	RED LED/LAMP
1210640863	S19207TC4B2	TYPE C MICRO 2P PG7 TRANSPARENT NBR FLAT GASKET	C4	24V	GREEN LED
1210640867	S19207TC4D2	TYPE C MICRO 2P PG7 TRANSPARENT NBR FLAT GASKET	C4	115V	GREEN LED
1210640869	S19207TC4E2	TYPE C MICRO 2P PG7 TRANSPARENT NBR FLAT GASKET	C4	230V	GREEN LED
1210640871	S19207TC4H1	TYPE C MICRO 2P PG7 TRANSPARENT NBR PROFILE GASKET	C4	24V	AMBER LED
1210640872	S19207TC4H2	TYPE C MICRO 2P PG7 TRANSPARENT NBR FLAT GASKET	C4	24V	AMBER LED
1210641256	S19207TA021	TYPE C MICRO 2P PG7 TRANSPARENT NBR PROFILE GASKET	A0	24V	RED LED/LAMP
1210641294	S19207TC4B1	TYPE C MICRO 2P PG7 TRANSPARENT NBR PROFILE GASKET	C4	24V	GREEN LED
1210641445	S19207TA051	TYPE C MICRO 2P PG7 TRANSPARENT NBR PROFILE GASKET	A0	230V	RED LED/LAMP
1210641465	S19207TC323	TYPE C MICRO 2P PG7 TRANSPARENT WHITE SILICON PROFILE GASKET	C3	24V	RED LED/LAMP
1210641541	S192M2TC4H1	TYPE C MICRO 2P M12x1.5 TRANSPARENT NBR PROFILE GASKET	C4	24V	AMBER LED
1210641550	S192M2TA121	TYPE C MICRO 2P M12x1.5 TRANSPARENT NBR PROFILE GASKET	A1	24V	RED LED/LAMP
1210641559	S19207NE051	TYPE C MICRO 2P PG7 BLACK NBR PROFILE GASKET	E0	230V	DIODE
1210641710	S19207TC4C3	TYPE C MICRO 2P PG7 TRANSPARENT WHITE SILICON PROFILE GASKET	C4	48V	GREEN LED
1210641718	S19207TC4L1	TYPE C MICRO 2P PG7 TRANSPARENT NBR PROFILE GASKET	C4	115V	AMBER LED
1210641727	S19207TC4L2	TYPE C MICRO 2P PG7 TRANSPARENT NBR FLAT GASKET	C4	115V	AMBER LED
1210641728	S19207TA1H1	TYPE C MICRO 2P PG7 TRANSPARENT NBR PROFILE GASKET	A1	24V	AMBER LED
1210641729	S19207TA1L1	TYPE C MICRO 2P PG7 TRANSPARENT NBR PROFILE GASKET	A1	115V	AMBER LED
1210650292	S19207TC4225N	TYPE C MICRO 2P PG7 TRANSPARENT NBR FLAT GASKET IN BOX OF 200	C4	24V	RED LED/LAMP
1210650511	S19207TC42214	TYPE C MICRO 2P PG7 TRANSPARENT NBR FLAT GASKET IN NEUTRAL BAG	C4	24V	RED LED/LAMP
1210641766	S19207TA1D1	TYPE C MICRO 2P PG7 TRANSPARENT NBR PROFILE GASKET	A1	115V	GREEN LED
1210641797	S19207NE051P7	TYPE C MICRO 2P PG7 BLACK NBR PROFILE GASKET, IP67 COMPLIANT	E0	230V	DIODE
1210641342	S19207TC4M1	TYPE C MICRO 2P PG7 TRANSPARENT NBR PROFILE GASKET	C4	230V	AMBER LED

<b>SEE SHEET ONE</b> EC NO: PG2014-4527 DRW:KORNOYLE 2014/02/26 CHK:DSHEA 2014/03/06 APPR:STGRiffin 2014/04/01 DESCRIPTION	<b>QUALITY SYMBOLS</b> ▽=0 ▽=0	<b>GENERAL TOLERANCES (UNLESS SPECIFIED)</b> <table border="1"> <tr><th colspan="2">mm</th><th>INCH</th></tr> <tr><td>4 PLACES</td><td>± 0.10</td><td>± 0.004</td></tr> <tr><td>3 PLACES</td><td>± 0.15</td><td>± 0.005</td></tr> <tr><td>2 PLACES</td><td>± 0.20</td><td>± 0.008</td></tr> <tr><td>1 PLACE</td><td>± 0.25</td><td>± 0.010</td></tr> </table>	mm		INCH	4 PLACES	± 0.10	± 0.004	3 PLACES	± 0.15	± 0.005	2 PLACES	± 0.20	± 0.008	1 PLACE	± 0.25	± 0.010	<b>DIMENSION STYLE</b> <b>MM ONLY</b>	<b>SCALE</b> <b>2:1</b>	<b>DESIGN UNITS</b> <b>METRIC</b>	<b>THIRD ANGLE PROJECTION</b>
	mm		INCH																		
	4 PLACES	± 0.10	± 0.004																		
	3 PLACES	± 0.15	± 0.005																		
2 PLACES	± 0.20	± 0.008																			
1 PLACE	± 0.25	± 0.010																			
<b>DRAFT WHERE APPLICABLE MUST REMAIN WITHIN DIMENSIONS</b>	<table border="1"> <tr><th>DRAWN BY</th><th>DATE</th><th>TITLE</th></tr> <tr><td>JOCANNOR</td><td>2011/05/18</td><td rowspan="2">S19 SERIES INTERNAL THREAD</td></tr> <tr><th>CHECKED BY</th><th>DATE</th></tr> <tr><td>MAHER</td><td>2011/05/18</td></tr> <tr><th>APPROVED BY</th><th>DATE</th></tr> <tr><td>EFOLAN</td><td>2011/06/07</td></tr> </table>	DRAWN BY	DATE	TITLE	JOCANNOR	2011/05/18	S19 SERIES INTERNAL THREAD	CHECKED BY	DATE	MAHER	2011/05/18	APPROVED BY	DATE	EFOLAN	2011/06/07	<b>MATERIAL NO.</b> <b>SEE CHART</b>	<b>DOCUMENT NO.</b> <b>SD-121064-003</b>	<b>SHEET NO.</b> <b>2 OF 2</b>			
DRAWN BY	DATE	TITLE																			
JOCANNOR	2011/05/18	S19 SERIES INTERNAL THREAD																			
CHECKED BY	DATE																				
MAHER	2011/05/18																				
APPROVED BY	DATE																				
EFOLAN	2011/06/07																				
<b>THIS DRAWING CONTAINS INFORMATION THAT IS PROPRIETARY TO MOLEX INCORPORATED AND SHOULD NOT BE USED WITHOUT WRITTEN PERMISSION</b>																					
<b>INCORPORATED AND SHOULD NOT BE USED WITHOUT WRITTEN PERMISSION</b>																					



ITEM	DESCRIPTION
1	SCREW
2	COVER ASSEMBLY
3	PCB
4	INSERT ASSEMBLY
5	GASKET

S19207TA022\*\*

SERIES  
 S19= INTERNAL THREAD FORM C MICRO  
 POLES  
 2= 2 POLE & 3= 3 POLE  
 THREAD  
 07= PG7, M2= M12x1.5  
 MATERIAL AND HOUSING COLOUR  
 G= PA6 GRAY, N= PA6 BLACK, W= PA6 BLACK VO,  
 T= PA12 TRANSPARENT, B= PA6 WHITE  
 CIRCUIT  
 SEE DETAILS IN CATALOGUE  
 VOLTAGE  
 SEE DETAILS IN CATALOGUE  
 SCREW AND GASKET  
 1= NBR PROFILE GASKET & SCREW  
 2= NBR FLAT GASKET & SCREW  
 3= WHITE SILICON PROFILE GASKET & SCREW  
 4= WHITE SILICON FLAT GASKET & SCREW  
 A= NBR PROFILE GASKET & SCREW +2mm  
 B= NBR FLAT GASKET & SCREW +2mm  
 NON STANDARD COMPONENTS  
 14= PACKED IN NEUTRAL BAG  
 5N= PACKED IN BOXES OF 200

- NOTES
- PLEASE SEE SHEET 2 FOR CURRENTLY CONFIGURED PART NUMBERS. FOR SPECIFIC PART NUMBERS PLEASE CONTACT SALES OR CONSULT THE INTELLIGENT PART NUMBERS IN THE TABLE ATTACHED.
  - EARTH POSITION SHOWN. H6.
  - FOR PACKAGING SEE PACKAGING SPEC PK 121065-S19
  - PRODUCT SPEC: SEE PS-121201-001

LAST INSPECTION NUMBER 2

<b>REMOVED PART NO:</b> EC NO: IPG2014-4527 DRW:KORNOYLE 2014/02/26 CHK:D:OSHEA 2014/03/06 APPR:STIGLIEFFIN 2014/04/01	QUALITY SYMBOLS ▽=0 ▽=0	GENERAL TOLERANCES (UNLESS SPECIFIED)		DIMENSION STYLE <b>MM ONLY</b>		SCALE <b>2:1</b>	DESIGN UNITS <b>METRIC</b>	THIRD ANGLE PROJECTION	
		4 PLACES ± --- ± ---	mm INCH	DRAWN BY JOCONNOR	DATE 2011/05/18	TITLE <b>S19 SERIES INTERNAL THREAD</b>			
		3 PLACES ± --- ± ---	± 0.10 ± ---	CHECKED BY DMAHER	DATE 2011/05/18	MATERIAL NO. <b>SEE SHEET 2</b>			
		2 PLACES ± 0.20 ± ---	ANGULAR ± 2 °	APPROVED BY EFOLAN	DATE 2011/06/07	DOCUMENT NO. <b>SD-121064-003</b>	SHEET NO. 1 OF 2		

DRAFT WHERE APPLICABLE MUST REMAIN WITHIN DIMENSIONS

THIS DRAWING CONTAINS INFORMATION THAT IS PROPRIETARY TO MOLEX INCORPORATED AND SHOULD NOT BE USED WITHOUT WRITTEN PERMISSION

PART No.	mPm PART No.	DESCRIPTION	CIRCUIT	VOLTAGE	COLOUR
1210640794	S19207NE052	TYPE C MICRO 2P PG7 BLACK NBR FLAT GASKET	E0	230V	DIODE
1210640798	S19207TA022	TYPE C MICRO 2P PG7 TRANSPARENT NBR FLAT GASKET	A0	24V	RED LED/LAMP
1210640804	S19207TA052	TYPE C MICRO 2P PG7 TRANSPARENT NBR FLAT GASKET	A0	230V	RED LED/LAMP
1210640807	S19207TA11A	TYPE C MICRO 2P PG7 TRANSPARENT NBR PROFILE GASKET & SCREW +2mm	A1	12V	RED LED/LAMP
1210640808	S19207TA121	TYPE C MICRO 2P PG7 TRANSPARENT NBR PROFILE GASKET	A1	24V	RED LED/LAMP
1210640809	S19207TA122	TYPE C MICRO 2P PG7 TRANSPARENT NBR FLAT GASKET	A1	24V	RED LED/LAMP
1210640812	S19207TA12A	TYPE C MICRO 2P PG7 TRANSPARENT NBR PROFILE GASKET & SCREW +2mm	A1	24V	RED LED/LAMP
1210640818	S19207TA142	TYPE C MICRO 2P PG7 TRANSPARENT NBR FLAT GASKET	A1	115V	RED LED/LAMP
1210640820	S19207TA14A	TYPE C MICRO 2P PG7 TRANSPARENT NBR PROFILE GASKET & SCREW +2mm	A1	115V	RED LED/LAMP
1210640825	S19207TA1B2	TYPE C MICRO 2P PG7 TRANSPARENT NBR FLAT GASKET	A1	24V	GREEN LED
1210640828	S19207TC022	TYPE C MICRO 2P PG7 TRANSPARENT NBR FLAT GASKET	C0	24V	RED LED/LAMP
1210640834	S19207TC122	TYPE C MICRO 2P PG7 TRANSPARENT NBR FLAT GASKET	C1	24V	RED LED/LAMP
1210640838	S19207TC321	TYPE C MICRO 2P PG7 TRANSPARENT NBR PROFILE GASKET	C3	24V	RED LED/LAMP
1210640839	S19207TC322	TYPE C MICRO 2P PG7 TRANSPARENT NBR FLAT GASKET	C3	24V	RED LED/LAMP
1210640846	S19207TC3H1	TYPE C MICRO 2P PG7 TRANSPARENT NBR PROFILE GASKET	C3	24V	AMBER LED
1210640847	S19207TC3H2	TYPE C MICRO 2P PG7 TRANSPARENT NBR FLAT GASKET	C3	24V	AMBER LED
1210640851	S19207TC42	TYPE C MICRO 2P PG7 TRANSPARENT NBR FLAT GASKET	C4	12V	RED LED/LAMP
1210640852	S19207TC421	TYPE C MICRO 2P PG7 TRANSPARENT NBR PROFILE GASKET	C4	24V	RED LED/LAMP
1210640853	S19207TC422	TYPE C MICRO 2P PG7 TRANSPARENT NBR FLAT GASKET	C4	24V	RED LED/LAMP
1210640854	S19207TC42A	TYPE C MICRO 2P PG7 TRANSPARENT NBR PROFILE GASKET & SCREW +2mm	C4	24V	RED LED/LAMP
1210640857	S19207TC441	TYPE C MICRO 2P PG7 TRANSPARENT NBR PROFILE GASKET	C4	115V	RED LED/LAMP
1210640858	S19207TC442	TYPE C MICRO 2P PG7 TRANSPARENT NBR FLAT GASKET	C4	115V	RED LED/LAMP
1210640863	S19207TC4B2	TYPE C MICRO 2P PG7 TRANSPARENT NBR FLAT GASKET	C4	24V	GREEN LED
1210640867	S19207TC4D2	TYPE C MICRO 2P PG7 TRANSPARENT NBR FLAT GASKET	C4	115V	GREEN LED
1210640869	S19207TC4E2	TYPE C MICRO 2P PG7 TRANSPARENT NBR FLAT GASKET	C4	230V	GREEN LED
1210640871	S19207TC4H1	TYPE C MICRO 2P PG7 TRANSPARENT NBR PROFILE GASKET	C4	24V	AMBER LED
1210640872	S19207TC4H2	TYPE C MICRO 2P PG7 TRANSPARENT NBR FLAT GASKET	C4	24V	AMBER LED
1210641256	S19207TA021	TYPE C MICRO 2P PG7 TRANSPARENT NBR PROFILE GASKET	A0	24V	RED LED/LAMP
1210641294	S19207TC4B1	TYPE C MICRO 2P PG7 TRANSPARENT NBR PROFILE GASKET	C4	24V	GREEN LED
1210641445	S19207TA051	TYPE C MICRO 2P PG7 TRANSPARENT NBR PROFILE GASKET	A0	230V	RED LED/LAMP
1210641465	S19207TC323	TYPE C MICRO 2P PG7 TRANSPARENT WHITE SILICON PROFILE GASKET	C3	24V	RED LED/LAMP
1210641541	S192M2TC4H1	TYPE C MICRO 2P M12x1.5 TRANSPARENT NBR PROFILE GASKET	C4	24V	AMBER LED
1210641550	S192M2TA121	TYPE C MICRO 2P M12x1.5 TRANSPARENT NBR PROFILE GASKET	A1	24V	RED LED/LAMP
1210641559	S19207NE051	TYPE C MICRO 2P PG7 BLACK NBR PROFILE GASKET	E0	230V	DIODE
1210641710	S19207TC4C3	TYPE C MICRO 2P PG7 TRANSPARENT WHITE SILICON PROFILE GASKET	C4	48V	GREEN LED
1210641718	S19207TC4L1	TYPE C MICRO 2P PG7 TRANSPARENT NBR PROFILE GASKET	C4	115V	AMBER LED
1210641727	S19207TC4L2	TYPE C MICRO 2P PG7 TRANSPARENT NBR FLAT GASKET	C4	115V	AMBER LED
1210641728	S19207TA1H1	TYPE C MICRO 2P PG7 TRANSPARENT NBR PROFILE GASKET	A1	24V	AMBER LED
1210641729	S19207TA1L1	TYPE C MICRO 2P PG7 TRANSPARENT NBR PROFILE GASKET	A1	115V	AMBER LED
1210650292	S19207TC4225N	TYPE C MICRO 2P PG7 TRANSPARENT NBR FLAT GASKET IN BOX OF 200	C4	24V	RED LED/LAMP
1210650511	S19207TC42214	TYPE C MICRO 2P PG7 TRANSPARENT NBR FLAT GASKET IN NEUTRAL BAG	C4	24V	RED LED/LAMP
1210641766	S19207TA1D1	TYPE C MICRO 2P PG7 TRANSPARENT NBR PROFILE GASKET	A1	115V	GREEN LED
1210641797	S19207NE051P7	TYPE C MICRO 2P PG7 BLACK NBR PROFILE GASKET, IP67 COMPLIANT	E0	230V	DIODE
1210641342	S19207TC4M1	TYPE C MICRO 2P PG7 TRANSPARENT NBR PROFILE GASKET	C4	230V	AMBER LED

<b>SEE SHEET ONE</b> EC NO: PG2014-4527 DRW:KORNOYLE 2014/02/26 CHK:DSHEA 2014/03/06 APPR:STGRiffin 2014/04/01 DESCRIPTION	<b>QUALITY SYMBOLS</b> ▽=0 ▽=0	<b>GENERAL TOLERANCES (UNLESS SPECIFIED)</b> <table border="1"> <tr><th></th><th>mm</th><th>INCH</th></tr> <tr><td>4 PLACES</td><td>± ---</td><td>± ---</td></tr> <tr><td>3 PLACES</td><td>± ---</td><td>± ---</td></tr> <tr><td>2 PLACES</td><td>± 0.10</td><td>± ---</td></tr> <tr><td>1 PLACE</td><td>± 0.20</td><td>± ---</td></tr> </table> ANGULAR ± 2 °		mm	INCH	4 PLACES	± ---	± ---	3 PLACES	± ---	± ---	2 PLACES	± 0.10	± ---	1 PLACE	± 0.20	± ---	<b>DIMENSION STYLE</b> <b>MM ONLY</b>	<b>SCALE</b> <b>2:1</b>	<b>DESIGN UNITS</b> <b>METRIC</b>	<b>THIRD ANGLE PROJECTION</b>
		mm	INCH																		
	4 PLACES	± ---	± ---																		
	3 PLACES	± ---	± ---																		
2 PLACES	± 0.10	± ---																			
1 PLACE	± 0.20	± ---																			
DRAWN BY JOCONNOR	DATE 2011/05/18	<b>TITLE</b> <b>S19 SERIES INTERNAL THREAD</b>																			
CHECKED BY DMAHER	DATE 2011/05/18																				
APPROVED BY EFOLAN	DATE 2011/06/07	<b>MOLEX INCORPORATED</b>																			
<b>DRAFT WHERE APPLICABLE MUST REMAIN WITHIN DIMENSIONS</b>		<b>MATERIAL NO.</b> <b>SEE CHART</b>	<b>DOCUMENT NO.</b> <b>SD-121064-003</b>	<b>SHEET NO.</b> <b>2 OF 2</b>																	
THIS DRAWING CONTAINS INFORMATION THAT IS PROPRIETARY TO MOLEX INCORPORATED AND SHOULD NOT BE USED WITHOUT WRITTEN PERMISSION																					

## X-ON Electronics

Largest Supplier of Electrical and Electronic Components

*Click to view similar products for [Circular DIN Connectors](#) category:*

*Click to view products by [Molex](#) manufacturer:*

Other Similar products are found below :

[60KD4M](#) [CTVP00RW-19-32S\(506\)](#) [M83723/76W22326](#) [M83723/78R22327](#) [D38999/26FE99SN L/C](#) [75-069228-21J](#) [7547401103P](#) [75-474014-07L](#) [88-559975-75P](#) [8R3006A18M0033](#) [PT02E1283P](#) [GTC00G-24-7S](#) [PT05A-14-5SX](#) [PT05A1832SW](#) [PT05E2255PW](#) [PT05SE1832SWLC](#) [PT05SE1832SYLC](#) [GTC030-20-27PW-LC](#) [GTC030A-20-33S](#) [PT06SE1811SXLC](#) [1211290078](#) [1211810025](#) [1210120122](#) [ACC06AF-20-23P\(003\)](#) [1210503216](#) [1211290084](#) [1211500027](#) [ACS06AF-16-10P\(003\)](#) [D38999/40FB35AN](#) [D38999/40FB35BB](#) [D38999/40WB35BN](#) [D38999/40WD35PN](#) [D38999/40WJ29SN-L/C](#) [D38999/40WJ4BN](#) [D38999/42FB35BN](#) [D38999/42WB35AB](#) [D38999/42WB35PB-L/C](#) [D38999/42WJ19AN](#) [D38999/42WJ24PN-L/C](#) [D38999/44WB35AN](#) [D38999/44WD35BN](#) [D38999/44WH21AN](#) [D38999/44WH35AN](#) [D38999/44WJ29BA](#) [D38999/44WJ35PN](#) [D38999/44WJ61BA](#) [D38999/46FB35AC](#) [D38999/46FB35BN](#) [D38999/46FB35SA-L/C](#) [D38999/46FB99BA](#)