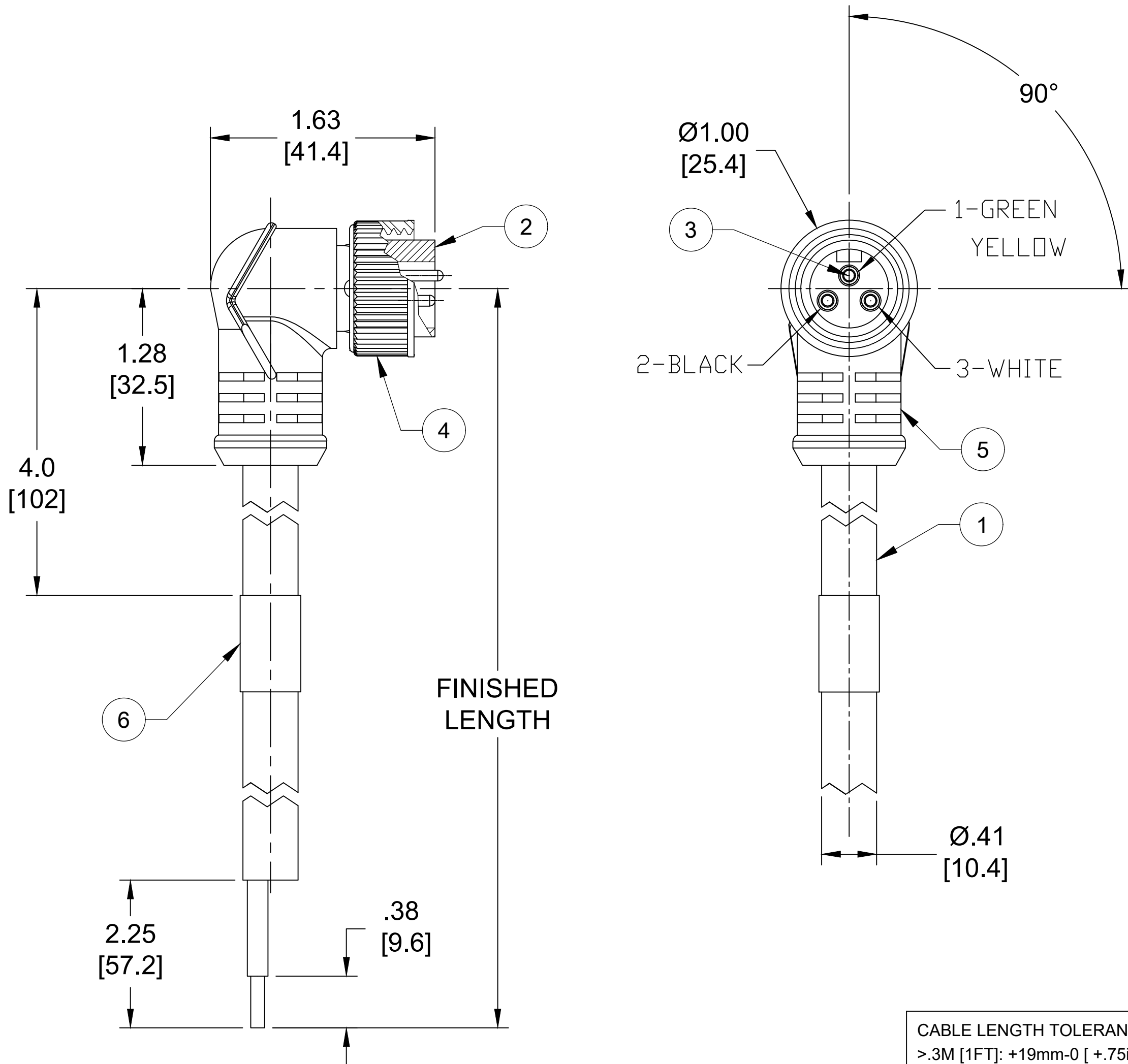
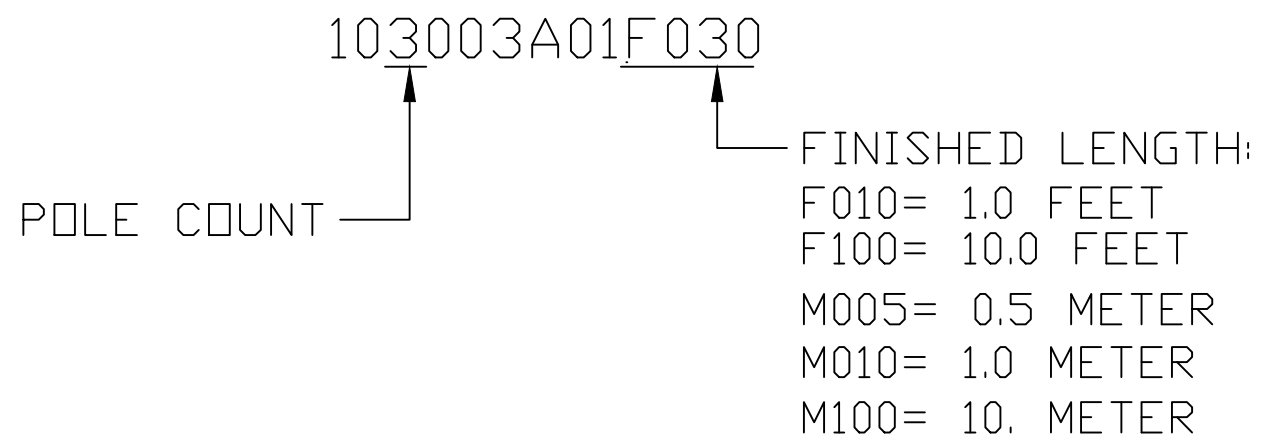


| PART NO. | ENGINEERING NO. | FINISHED LENGTH |
|------------|-----------------|-----------------|
| 1300060643 | 103003A01F030 | 3.0FT [91.4M] |
| 1300060647 | 103003A01F060 | 6.0FT [1.8M] |
| 1300060657 | 103003A01F200 | 20.0FT [6.1M] |

REF. THIS DRAWING SUPERSEDES SD-130006-035 REV-1 (A)

PART NUMBER LEGEND



- NOTES:**
1. MATERIAL: AS NOTED
 2. FINISH: AS NOTED
 3. ELECTRICAL:
VOLTAGE: 500V PER IEC60664
600V PER UL2238
CURRENT: 13A
 4. TEMP RATING: -20°TO +80°C
 5. PROTECTION: IP67 (WHEN MATED)
 6. COUPLING THREAD: 7/8-16UN
 7. UL RECOGNIZED FILE: E152210
CSA CERTIFIED FILE: LR6837
 8. ALL DIMS ARE FOR REFERENCE UNLESS TOLERANCED OR NOTED OTHERWISE

| CABLE LENGTH TOLERANCES | |
|--------------------------|-------------------------|
| >.3M [1FT]: | +19mm-0 [+ .75in-0] |
| .3 - .9M [1 - 3FT]: | +44.5mm-0 [+1.75in-0] |
| .9 - 1.8M [3 - 6FT]: | +55.6mm-0 [+2.19in-0] |
| 1.8 - 3.7M [6 - 12FT]: | +88.9mm-0 [+3.50in-0] |
| 3.7 - 7.3M [12 - 24FT]: | +165.1mm-0 [+6.50in-0] |
| 7.3-14.6M [24 - 48FT]: | +317.5mm-0 [+12.50in-0] |
| 14.6 - 30.5M [48-100FT]: | +622.3mm-0 [+24.50in-0] |
| OVER 30M [100FT] | +2% OF FINISHED LENGTH |

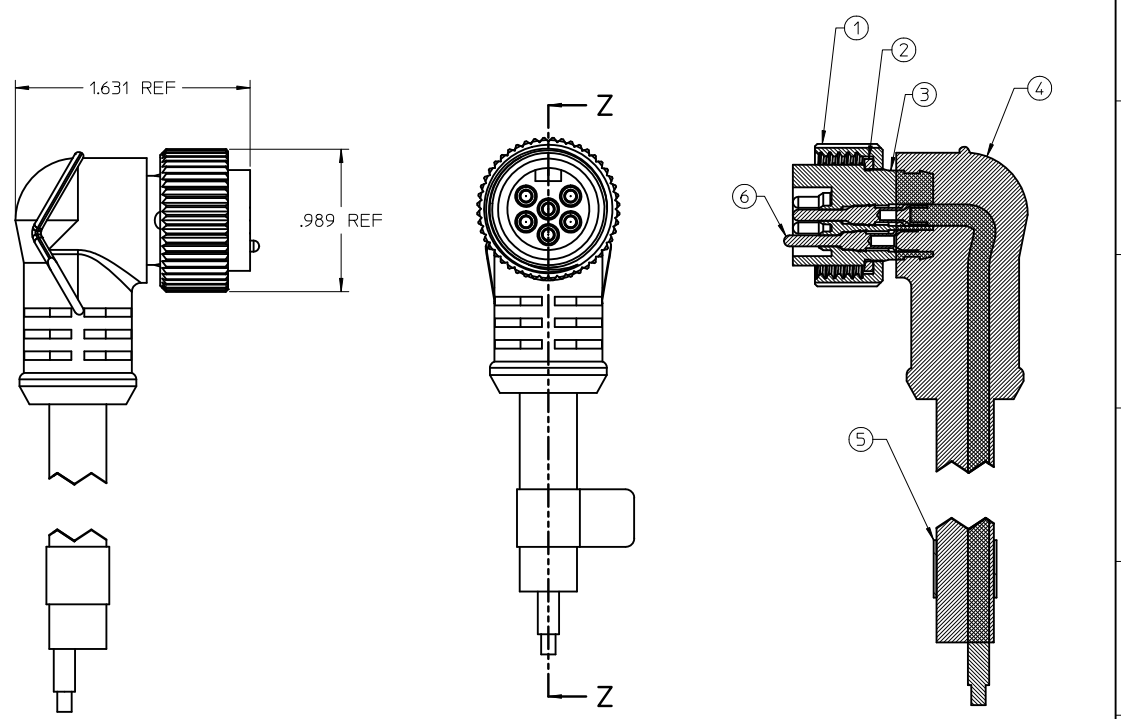
| ITEM | DESCRIPTION | MATERIAL | FINISH |
|------|------------------------|---------------|---------------|
| 6 | WRAP LABEL | VINYL | BLACK/YELLOW |
| 5 | OVERMOLD | TPE | YELLOW |
| 4 | COUPLING NUT, INT. THD | ZINC DIE-CAST | NICKEL PLATED |
| 3 | CONTACT PIN | COPPER ALLOY | GOLD PLATED |
| 2 | MALE INSERT | TPE | YELLOW |
| 1 | CABLE, 16/3, STOOW | PVC JACKET | YELLOW |

| | | | | | |
|---|--|---|--|--|--|
| SYMBOLS DIMENSION UNITS: INCH/MM SCALE: 1:1 CURRENT REV DESC: REDRAWN, WAS SD-130006-035 | | | | molex MINI CHANGE CABLE ASSY, 3P, MALE, 90 DEG 16AWG, STOOW, INTERNAL THREAD | |
| GENERAL TOLERANCES (UNLESS SPECIFIED) | | EC NO: 624117 DRWN: RSTONE 2019/09/10 CHK'D: MZIELINSKI 2019/09/19 APPR: BWOODMAN 2019/10/03 | | PRODUCT CUSTOMER DRAWING | |
| 4 PLACES ± .004 ± .004 3 PLACES ± .004 ± .004 2 PLACES ± .004 ± .004 1 PLACE ± .004 ± .004 0 PLACES ± .004 ± .004 | | INITIAL REVISION: DRWN: RSTONE 2019/09/10 APPR: BWOODMAN 2019/10/03 | | DOCUMENT NUMBER: 1300060643 DOC TYPE: PSD DOC PART: 000 REVISION: A | |
| ANGULAR TOL ± .004 ° DRAFT WHERE APPLICABLE MUST REMAIN WITHIN DIMENSIONS | | THIRD ANGLE PROJECTION | | DRAWING: C-SIZE SERIES: 130006 MATERIAL NUMBER: --- CUSTOMER: --- SHEET NUMBER: 1 OF 1 | |

13 12 11 10 9 8 7 6 5 4 3 2 1

FRONT VIEW - MALE ASSEMBLY

| | | | | |
|----------------------|---|---|--|---|
| | | | | |
| 1. WHITE 2. BLACK | 1. GREEN/YELLOW 2. BLACK 3. WHITE | 1. BLACK 2. WHITE 3. RED 4. GREEN/YELLOW | 1. WHITE 2. RED 3. GREEN/YELLOW 4. ORANGE 5. BLACK | 1. WHITE 2. RED 3. GREEN/YELLOW 4. ORANGE 5. BLACK 6. BLUE |



| ENTER DESCRIPTION EC NO: WNAZ00-029 CHKD: BWOODMAN 2010/01/14 APPR: JFMURPHY 2010/01/14 | QUALITY SYMBOLS 0 0 | GENERAL TOLERANCES (UNLESS SPECIFIED) <table border="1"> <tr> <th></th> <th>mm</th> <th>INCH</th> </tr> <tr> <td>4 PLACES</td> <td>± .005</td> <td>± .0002</td> </tr> <tr> <td>3 PLACES</td> <td>± .003</td> <td>± .0001</td> </tr> <tr> <td>2 PLACES</td> <td>± .002</td> <td>± .00005</td> </tr> <tr> <td>1 PLACE</td> <td>± .001</td> <td>± .00002</td> </tr> </table> | | mm | INCH | 4 PLACES | ± .005 | ± .0002 | 3 PLACES | ± .003 | ± .0001 | 2 PLACES | ± .002 | ± .00005 | 1 PLACE | ± .001 | ± .00002 | DIMENSION STYLE IN/MM | SCALE 1.5:1 | DESIGN UNITS INCH | <input checked="" type="checkbox"/> THIRD ANGLE PROJECTION |
|--|----------------------------------|---|---------|---|------|---------------------|--------|---------|----------|--------|---------|----------|--------|----------|---------|--------|----------|---------------------------------|-----------------------|-----------------------------|--|
| | | mm | INCH | | | | | | | | | | | | | | | | | | |
| | 4 PLACES | ± .005 | ± .0002 | | | | | | | | | | | | | | | | | | |
| | 3 PLACES | ± .003 | ± .0001 | | | | | | | | | | | | | | | | | | |
| 2 PLACES | ± .002 | ± .00005 | | | | | | | | | | | | | | | | | | | |
| 1 PLACE | ± .001 | ± .00002 | | | | | | | | | | | | | | | | | | | |
| DRAWN BY: NKUMAR01 DATE: 01/11/2010 CHECKED BY: BWOODMAN DATE: 01/11/2010 APPROVED BY: JFMURPHY DATE: 2010/01/14 | | TITLE MC 6P MP 90D 16/4 ST00W | | MOLEX INCORPORATED | | SHEET NO. 1 OF 2 | | | | | | | | | | | | | | | |
| MATERIAL NO. 9999999999 | | DOCUMENT NO. SD-130006-035 | | THIS DRAWING CONTAINS INFORMATION THAT IS PROPRIETARY TO MOLEX INCORPORATED AND SHOULD NOT BE USED WITHOUT WRITTEN PERMISSION | | | | | | | | | | | | | | | | | |
| DRAFT WHERE APPLICABLE MUST REMAIN WITHIN DIMENSIONS | | | | | | | | | | | | | | | | | | | | | |

12 11 10 9 8 7 6 5 4 3 2 1

13 12 11 10 9 8 7 6 5 4 3 2 1

MINI A SIZE 90° MALE ASSEMBLY

| Sl. No. | DESCRIPTION | MATERIAL | FINISH | QUANTITY | | | | |
|---------|-------------------------------|--------------|----------------|----------|--------|--------|--------|--------|
| | | | | 2 POLE | 3 POLE | 4 POLE | 5 POLE | 6 POLE |
| 1 | COUPLING NUT | ZINC DIECAST | BLACK E-COATED | 1 | 1 | 1 | 1 | 1 |
| 2 | FRICION RING | NYLON | NATURAL | 1 | 1 | 1 | 1 | 1 |
| 3 | 2P MALE INSERT PVC A SIZE | PVC | YELLOW | 1 | | | | |
| | 3P MALE INSERT PVC A SIZE | PVC | YELLOW | | 1 | | | |
| | 4P MALE INSERT PVC A SIZE | PVC | YELLOW | | | 1 | | |
| | 5P MALE INSERT PVC A SIZE | PVC | YELLOW | | | | 1 | |
| | 6P MALE INSERT PVC A SIZE | PVC | YELLOW | | | | | 1 |
| 4 | #16 AWG YELLOW STOOV/ST CORD | PVC JACKET | YELLOW | 2 | 3 | 4 | 5 | 6 |
| 5 | LABEL WRAP AROUND LABEL-2 x 3 | PLASTIC FILM | BLACK/YELLOW | 1 | 1 | 1 | 1 | 1 |
| 6 | PIN CONTACT | COPPER ALLOY | GOLD PLATED | 1 | 1 | 1 | 1 | 1 |

| POLE COUNT | MAX. VOLTAGE RATING | MAX. CURRENT RATING | CABLE DIAMETER |
|------------|---------------------|---------------------|----------------|
| 2 POLE | 600 VOLTS | 13 AMPS | .37" / 9.4mm |
| 3 POLE | 600 VOLTS | 13 AMPS | .41" / 10.4mm |
| 4 POLE | 600 VOLTS | 10 AMPS | .42" / 10.7mm |
| 5 POLE | 600 VOLTS | 8 AMPS | .50" / 12.7mm |
| 6 POLE | 600 VOLTS | 8 AMPS | .54" / 13.7mm |

| PART NUMBER | DESCRIPTION | FINISHED LENGTH |
|-------------|---------------|---------------------------------|
| 1300060192 | 102003A01F030 | 3' +1.75' -0 [9M + 44.5 -0] |
| 1300060194 | 102003A01F060 | 6' +2.19' -0 [1.8M + 55.6 -0] |
| 1300060196 | 102003A01F120 | 12' +3.50' -0 [3.7M + 88.9 -0] |
| 1300060200 | 102003A01F200 | 20' +6.50' -0 [6.1M + 165.1 -0] |
| 1300060643 | 103003A01F030 | 3' +1.75' -0 [9M + 44.5 -0] |
| 1300060647 | 103003A01F060 | 6' +2.19' -0 [1.8M + 55.6 -0] |
| 1300060651 | 103003A01F120 | 12' +3.50' -0 [3.7M + 88.9 -0] |
| 1300060657 | 103003A01F200 | 20' +6.50' -0 [6.1M + 165.1 -0] |
| 1300061084 | 104003A01F030 | 3' +1.75' -0 [9M + 44.5 -0] |
| 1300061087 | 104003A01F060 | 6' +2.19' -0 [1.8M + 55.6 -0] |
| 1300061090 | 104003A01F120 | 12' +3.50' -0 [3.7M + 88.9 -0] |
| 1300061095 | 104003A01F200 | 20' +6.50' -0 [6.1M + 165.1 -0] |
| 1300061516 | 105003A01F030 | 3' +1.75' -0 [9M + 44.5 -0] |
| 1300061518 | 105003A01F060 | 6' +2.19' -0 [1.8M + 55.6 -0] |
| 1300061524 | 105003A01F120 | 12' +3.50' -0 [3.7M + 88.9 -0] |
| 1300061524 | 105003A01F200 | 20' +6.50' -0 [6.1M + 165.1 -0] |
| 1300061700 | 106003A01F030 | 3' +1.75' -0 [9M + 44.5 -0] |
| 1300061703 | 106003A01F060 | 6' +2.19' -0 [1.8M + 55.6 -0] |
| 1300061706 | 106003A01F120 | 12' +3.50' -0 [3.7M + 88.9 -0] |
| 1300061713 | 106003A01F200 | 20' +6.50' -0 [6.1M + 165.1 -0] |

| | | | | | |
|--|--|--|---|--|-------------------------------------|
| ENTER DESCRIPTION EC NO: WNAZ010-029 DRAWN BY: NKUMAR01 DATE: 01/11/2010 APPR: BWOODMAN DATE: 01/11/2010 APPR: JFMURPHY DATE: 2010/01/14 | QUALITY SYMBOLS ▽=0 ▽=0 | GENERAL TOLERANCES (UNLESS SPECIFIED) mm INCH 4 PLACES ± .005 ± .0005 3 PLACES ± .004 ± .0004 2 PLACES ± .003 ± .0003 1 PLACE ± .002 ± .0002 ANGULAR ±1/2° | DIMENSION STYLE IN/MM DRAWN BY: NKUMAR01 DATE: 01/11/2010 CHECKED BY: BWOODMAN DATE: 01/11/2010 APPROVED BY: JFMURPHY DATE: 2010/01/14 | SCALE 3:1 DESIGN UNITS INCH THIRD ANGLE PROJECTION | TITLE MC 6P MP 90D 16/4 STOOV |
| | DRAFT WHERE APPLICABLE MUST REMAIN WITHIN DIMENSIONS | | MATERIAL NO. 9999999999 | DOCUMENT NO. SD-130006-035 | SHEET NO. 2 OF 2 |

tb_frame_C_P_AM_T Rev. E 2006/04/15 12 11 10 9 8 7 6 5 4 3 2 1

X-ON Electronics

Largest Supplier of Electrical and Electronic Components

Click to view similar products for [Sensor Cables / Actuator Cables](#) category:

Click to view products by [Molex](#) manufacturer:

Other Similar products are found below :

[60963](#) [60964](#) [M83513/19-F01CP](#) [703000D02F2002](#) [703001D02F0602](#) [703001D02F300](#) [704000D02F120](#) [773032K02F030](#) [802027107404-1](#)
[802027213811-1](#) [804001A09M150](#) [805001A09M0502](#) [84914-0235](#) [84914-0237](#) [885030A09M020](#) [8R4J30E03C3003](#) [1200651332](#)
[1200651713](#) [1200660844](#) [1200660845](#) [1200661173](#) [1200680071](#) [1200720053](#) [1200720081](#) [1200720099](#) [1200720217](#) [1200800231](#)
[1200860125](#) [1200870123](#) [1200980102](#) [1200650267](#) [1200650298](#) [1200660183](#) [1200660782](#) [1200660849](#) [1200661295](#) [1200661297](#)
[1200661342](#) [1200661343](#) [1200670080](#) [1200670220](#) [1200680331](#) [1200720252](#) [1200730184](#) [1200860344](#) [1200870359](#) [1200870643](#)
[1200980008](#) [1200980031](#) [1210502211](#)