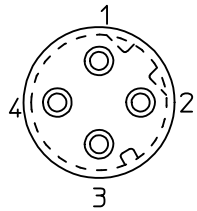


4 POL. MM

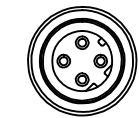


VIEW FROM WIRES SIDE

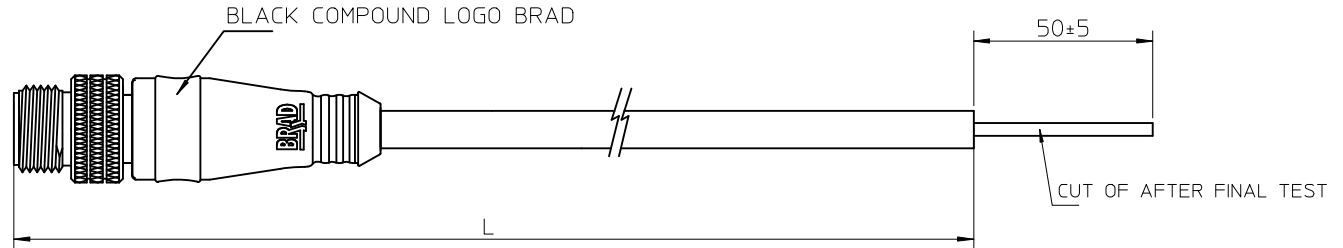
Pin	Wire color	Wire color
1	Yellow	YE
2	White	WH
3	Orange	OG
4	Blue	BU

Over	Up to and including	Tolerance (+)
0	305	+19
305	915	+45
915	1830	+56
1830	3660	+89
3660	7320	+165
7320	14640	+317
14640	30500	+610
30500	>	+2% of length

Molex P/N:	ENG P/N:	L [mm]
1300480281	E10A00611M050	5000
1300480282	E10A00611M100	10000
1300480283	E10A00611M200	20000
1300480284	E10A00611M300	30000
1300480285	E10A00611M500	50000



VIEW FROM FRONT SIDE.



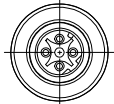
CABLE SPECIFICATION

No. OF CONDUCTORS: 4
 STRANDING: 7x30AWG
 CROSS SECTION: 0,34mm
 OUTER JACKET: GREEN PUR
 TEMPERATURE RATING:
 OPERATING: -20° to 60°C
 STORAGE: -40° to 80°C

SILICONE FREE
 HALOGEN FREE

ORIGINAL RELEASE EC NO: IPG2014-0291 DRWN: MDYSZEWSKA 2012/11/14 CHKD: JMARSZALEK 2013/11/28 APPR: MIWASIECZKO 2013/11/28	DESCRIPTION REV A	QUALITY SYMBOLS	GENERAL TOLERANCES (UNLESS SPECIFIED)	DIMENSION STYLE MM ONLY	SCALE -	DESIGN UNITS METRIC	FIRST ANGLE PROJECTION		
		▼=0 □=0	mm INCH 4 PLACES ± --- ± --- 3 PLACES ± --- ± --- 2 PLACES ± --- ± --- 1 PLACE ± --- ± --- 0 PLACE ± --- ± ---	DRAWN BY: MDYSZEWSKA DATE: 2012/11/14 CHECKED BY: JMARSZALEK DATE: 2013/11/28 APPROVED BY: MIWASIECZKO DATE: 2013/11/28	TITLE	CSE M12 4P DC MA STR PUR XM SE SHLD GN BRA NI			
		ANGULAR ± --- ° DRAFT WHERE APPLICABLE MUST REMAIN WITHIN DIMENSIONS	SEE CHART 1	molex		DOCUMENT NO.	SD-130048-005		SHEET NO.
			SIZE A3	THIS DRAWING CONTAINS INFORMATION THAT IS PROPRIETARY TO MOLEX INCORPORATED AND SHOULD NOT BE USED WITHOUT WRITTEN PERMISSION					

MALE FACE VIEW
4-POLE



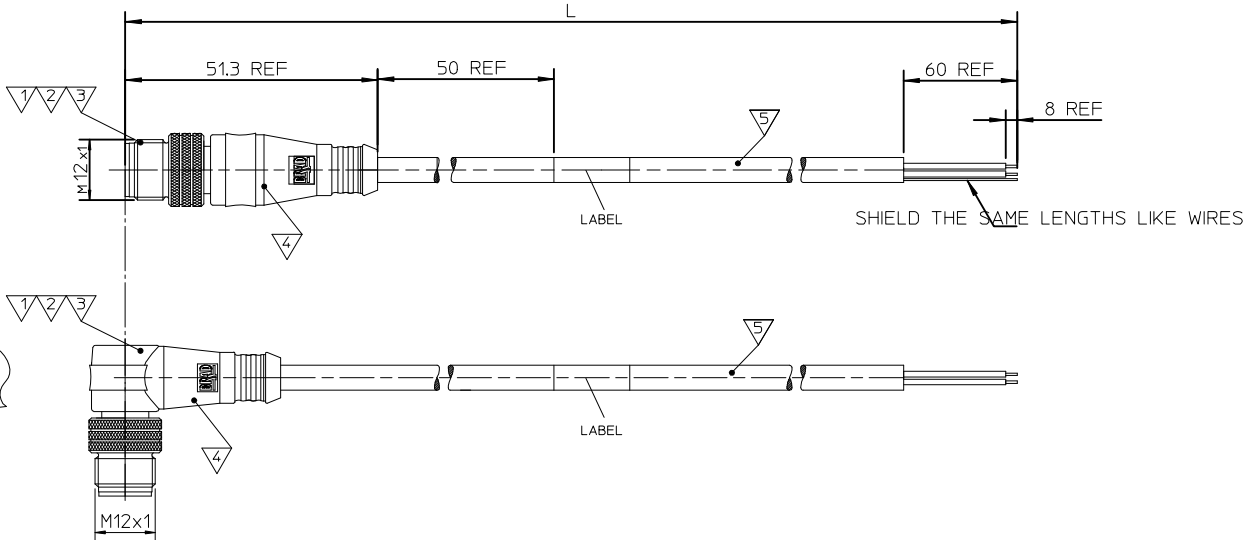
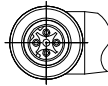
WIRING DIAGRAM

1 YELLOW
2 WHITE
3 ORANGE
4 BLUE

006



007



E 1 0 A X X X 1 1 X X X X X

Network Protocol E=Ethernet	First Connector 1-M12 Threaded 4 Pole D-code	Second Connector 0=No Connector	Wiring Scheme A=4 Pole	HEAD TYPE 006 Plugs male straight and single ended 007 Plugs male 90° and single ended	Cable type 2x2x22AWG PUR, GREEN, SHIELD	LENGTH UNIT C-cm M-m K-km F-feet	LENGTH Example: 020 - 2M 060 - 6M 100 - 10M	OPTIONS D- Decoupled (for Shielded version only)
--------------------------------	---	------------------------------------	---------------------------	--	---	--	---	---

Table of length tolerances

Over	Up to and including	Tolerance ^(*)
0	305	+19
305	915	+45
915	1830	+56
1830	3660	+89
3660	7320	+165
7320	14640	+317
14640	30500	+610
30500	>	2 % of length

CONNECTOR SPECIFICATION:

VOLTAGE RATING	max 30V
AMPERAGE RATING	1.5 A
PROTECTION	IP67
OPERATING TEMPERATURE	-20°C TO 75°C

5	CABLE	1202098084	---
4	OVERMOULDING	TPU UF NATURAL C98A10	---
4	OVERMOULDING	MASTERBATCH COLORANT	---
3	COUPLING NUT	SEE SPECIAL TYPES	---
2	PIN CONTACT	COPPER ALLOY	GOLD OR NICKEL PLATED
1	INSERT	PUR	BLACK
ITEM	PART	MATERIAL	FINISH

ORIGINAL RELEASE
EC NO: IPG2013-0772
DRWN:MDYSZEWSKA 2012/11/24
CHKD:HWALCZAK 2012/11/24
APPR:MIWASIECZKO 2012/12/21

QUALITY SYMBOLS
▽=0
◻=0

GENERAL TOLERANCES (UNLESS SPECIFIED)

	mm	INCH
4 PLACES	± ---	± ---
3 PLACES	± ---	± ---
2 PLACES	± ---	± ---
1 PLACE	± ---	± ---
0 PLACE	± ---	± ---

ANGULAR ±---°
DRAFT WHERE APPLICABLE
MUST REMAIN WITHIN DIMENSIONS

DIMENSION STYLE
MM ONLY

DRAWN BY	DATE
MDYSZEWSKA	2012/11/24
CHECKED BY	DATE
HWALCZAK	2012/11/24
APPROVED BY	DATE
MIWASIECZKO	2012/12/21

MATERIAL NO.
SEE PAGE 2

SCALE ---
DESIGN UNITS METRIC
FIRST ANGLE PROJECTION

TITLE
CSE ETH 4P DC PUR MA
XM SE SHLD GN NI


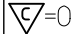


molex

DOCUMENT NO. SD-130048-008
SHEET NO. 1 OF 2

THIS DRAWING CONTAINS INFORMATION THAT IS PROPRIETARY TO MOLEX INCORPORATED AND SHOULD NOT BE USED WITHOUT WRITTEN PERMISSION

SEE CHART 1

1300480281	E10A00611M050
1300480282	E10A00611M100
1300480283	E10A00611M200
1300480284	E10A00611M300
1300480285	E10A00611M500
1300480286	E10A00711M050
1300480287	E10A00711M100
1300480288	E10A00711M200

ORIGINAL RELEASE EC NO: IPG2013-0772 DRWN:MDYSZEWSKA 2012/11/24 CHKD:HWALCZAK 2012/11/24 APPR:MIWASIECZKO 2012/12/21	DESCRIPTION REV	QUALITY SYMBOLS  = 0  = 0.05	GENERAL TOLERANCES (UNLESS SPECIFIED)		DIMENSION STYLE MM ONLY		SCALE ---	DESIGN UNITS METRIC	 FIRST ANGLE PROJECTION		
				4 PLACES ± --- ± --- 3 PLACES ± --- ± --- 2 PLACES ± --- ± --- 1 PLACE ± --- ± --- 0 PLACE ± --- ± ---	mm INCH	DRAWN BY DATE MDYSZEWSKA 2012/11/24	TITLE CSE ETH 4P DC PUR MA XM SE SHLD GN NI				
				ANGULAR ± --- °		CHECKED BY DATE HWALCZAK 2012/11/24					
				DRAFT WHERE APPLICABLE MUST REMAIN WITHIN DIMENSIONS		APPROVED BY DATE MIWASIECZKO 2012/12/21					

X-ON Electronics

Largest Supplier of Electrical and Electronic Components

Click to view similar products for [Specialised Cables category](#):

Click to view products by [Molex manufacturer](#):

Other Similar products are found below :

[GP-IE515546DS-002](#) [7810SB-010-1000](#) [96CB-L2020PIB2](#) [1200740161](#) [R88ACAKA0015SRE](#) [R88ACAWL005SDE](#) [R88ACRGD0R3C](#)
[1300660042](#) [1300660201](#) [1971465-2](#) [22733-8](#) [2R7004A20F060](#) [SSL009PC2DC012N](#) [FC2A-KC6C](#) [CCSFCBF2](#) [R7ACAB005S](#)
[XS2WM12PUR4SA10M](#) [XS2WM12PVC4SA10M](#) [05AU05](#) [UCABLE](#) [10114734-2010LF](#) [XW2Z010H3](#) [XW2Z010H1](#) [5-1589827-8](#) [5-](#)
[1589827-4](#) [861084-1](#) [XW2Z200JB24](#) [5-1589956-8](#) [CR4000A76M020](#) [1201140211](#) [1300140039](#) [CR4000A76M005](#) [CR4006A76M005](#)
[10077488-N0550FDLF](#) [XW2ZRY150C](#) [I4JPBJLUXX100](#) [I4JPBJLUXX50](#) [CM06](#) [CM06W](#) [POE004](#) [0243 009 05](#) [0243 009 20](#) [0243 009 36](#)
[0243 009 26](#) [0243 009 33](#) [0243 009 23](#) [0243 009 01](#) [0243 009 30](#) [0243 008 05](#) [0243 008 20](#)