

PLEASE CHECK WWW.MOLEX.COM FOR LATEST PART INFORMATION

Part Number: [0015976041](#)
Status: **Active**
Overview: [Mini-Fit TPA2 Plugs and Receptacles](#)
Description: Mini-Fit TPA Plug Housing, 4.20mm Pitch, Dual Row with Secondary Terminal Retention, 4 Circuits, Black
Replacement Part Number: <http://www.molex.com/molex/products/listview.jsp?channel=Products&sType=p&query=1727620004172762-0004 w/differences>

Documents:

[3D Model](#) [Product Specification PS-5556-003 \(PDF\)](#)
[Drawing \(PDF\)](#) [RoHS Certificate of Compliance \(PDF\)](#)

Agency Certification

CSA LR19980
 UL E29179

General

Product Family Crimp Housings
 Series [30068](#)
 Application Power, Wire-to-Wire
 Comments Current = 13A max. per circuit when header is mated to a receptacle loaded with [45750](#) series terminals crimped to 16 AWG wire. . See Molex product specification PS-45750-001 for additional current derating information.
 Overview [Mini-Fit TPA2 Plugs and Receptacles](#)
 Product Name Mini-Fit TPA
 Replacement Part Number [172762-0004](#) w/differences
 UPC 800754202350

Physical

Circuits (maximum) 4
 Color - Resin Black
 Flammability 94V-0
 Gender Plug
 Glow-Wire Capable No
 Material - Resin Polyester
 Net Weight 2.456/g
 Number of Rows 2
 Packaging Type Bag
 Panel Mount No, Yes
 Pitch - Mating Interface 4.20mm
 Stackable No
 Temperature Range - Operating -40° to +105°C

Electrical

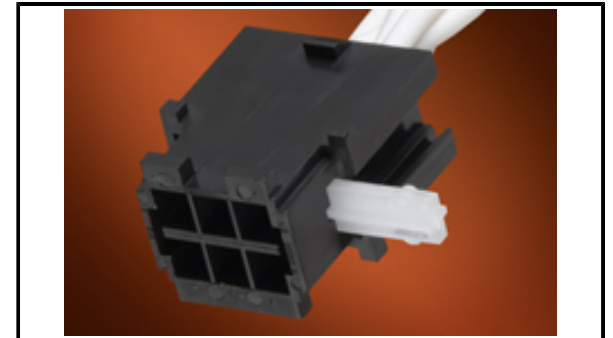
Current - Maximum per Contact 13.0A

Material Info

Engineering Number 30068-04

Reference - Drawing Numbers

Product Specification PS-5556-003
 Sales Drawing 300680000-SD-000



Series image - Reference only

EU ELV

Not Relevant

EU RoHS

Compliant

REACH SVHC

Not Contained Per -ED/01/2018 (15 January 2018)

Halogen-Free

Status

Not Low-Halogen

For more information, please visit [Contact US](#)

China ROHS

ELV

RoHS Phthalates

China RoHS

Green Image

Not Relevant

Not Contained

Search Parts in this Series

[30068](#) Series

Mates With

[30068](#) Plug Housing, [30069](#) Header, [30070](#) Right Angle Header, [44473](#) Right Angle Header

Use With

[30072](#) Mini-Fit TPA Key

PLEASE CHECK WWW.MOLEX.COM FOR LATEST PART INFORMATION

X-ON Electronics

Largest Supplier of Electrical and Electronic Components

Click to view similar products for [Headers & Wire Housings](#) category:

Click to view products by [Molex](#) manufacturer:

Other Similar products are found below :

[892-18-020-10-001101](#) [58102-G61-06LF](#) [582553-1](#) [0009485154](#) [009176003701906](#) [0050291907](#) [LY20-4P-DT1-P1E-BR](#) [02.125.8002.8](#)
[609-3404](#) [61062-3](#) [622-0430](#) [622-3653LF](#) [63453-116](#) [636-1030](#) [636-1427](#) [636-3427](#) [636-4007](#) [641938-9](#) [641991-4](#) [644827-2](#) [65817-010LF](#)
[65817-015LF](#) [65863-015LF](#) [66207-023LF](#) [67095-007LF](#) [67601157](#) [68648-049](#) [70.362.1628.0](#) [70-4210](#) [70-4226B](#) [70-4853B](#) [707-5020](#) [707-](#)
[5028](#) [71.350.2428.0](#) [71918-208LF](#) [71961-016LF](#) [733-134](#) [733-162](#) [754199-000](#) [760-3052](#) [787-8014-00](#) [79531-3000](#) [FCN-360C032-B](#) [FCN-](#)
[367T-T012/H](#) [FCN-723D010/2](#) [80.063.4001.1](#) [800-90-001-10-001000](#) [800-90-010-10-002000](#) [801-43-002-10-013000](#) [801-43-006-10-002000](#)