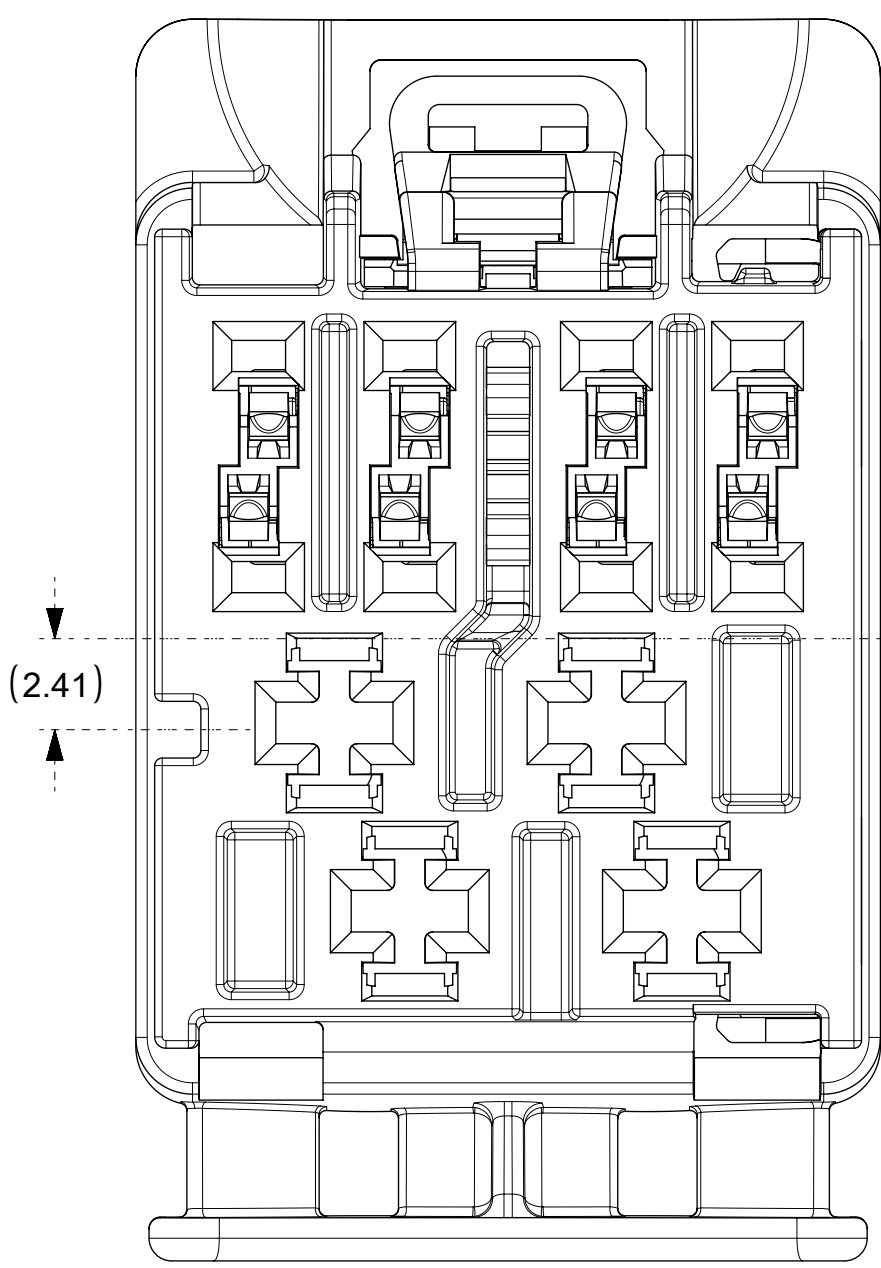
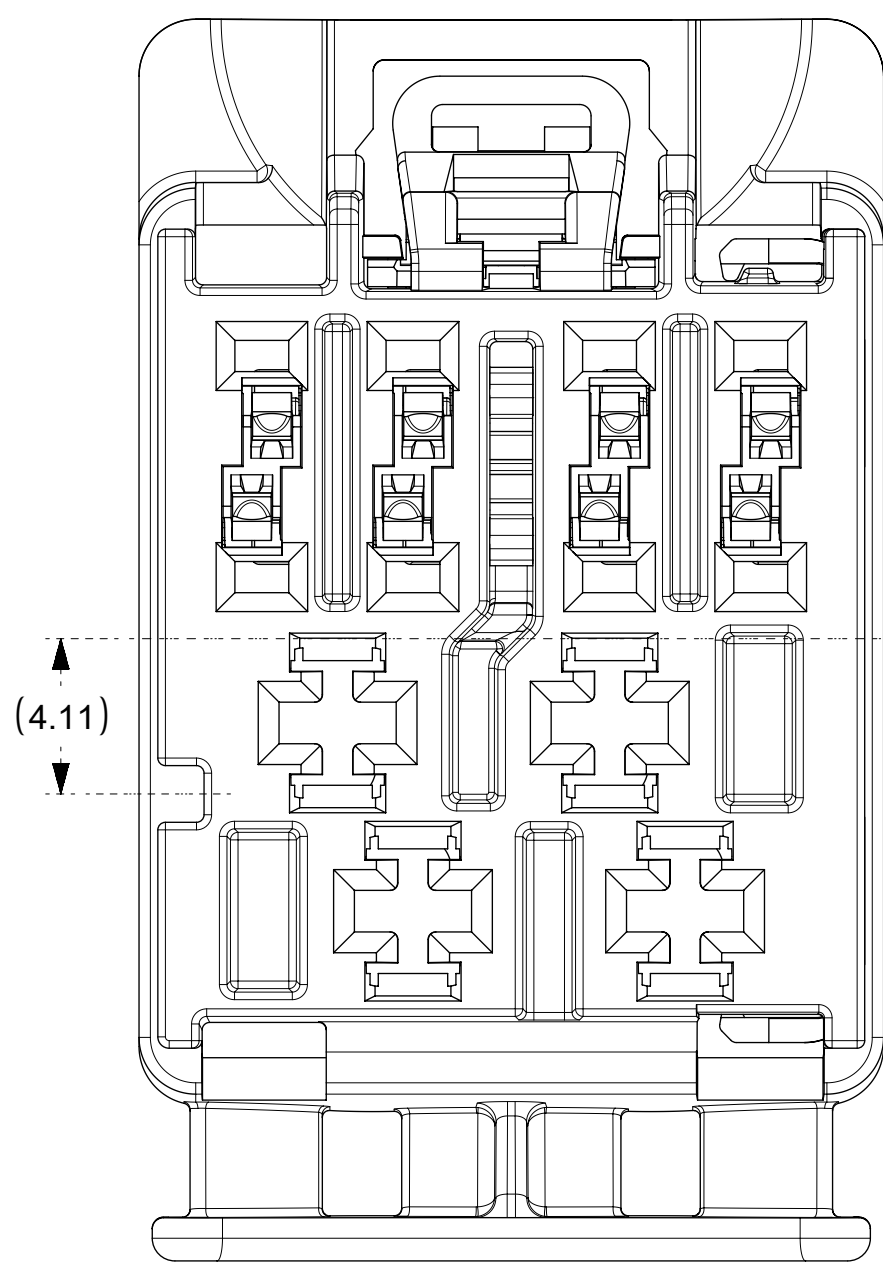


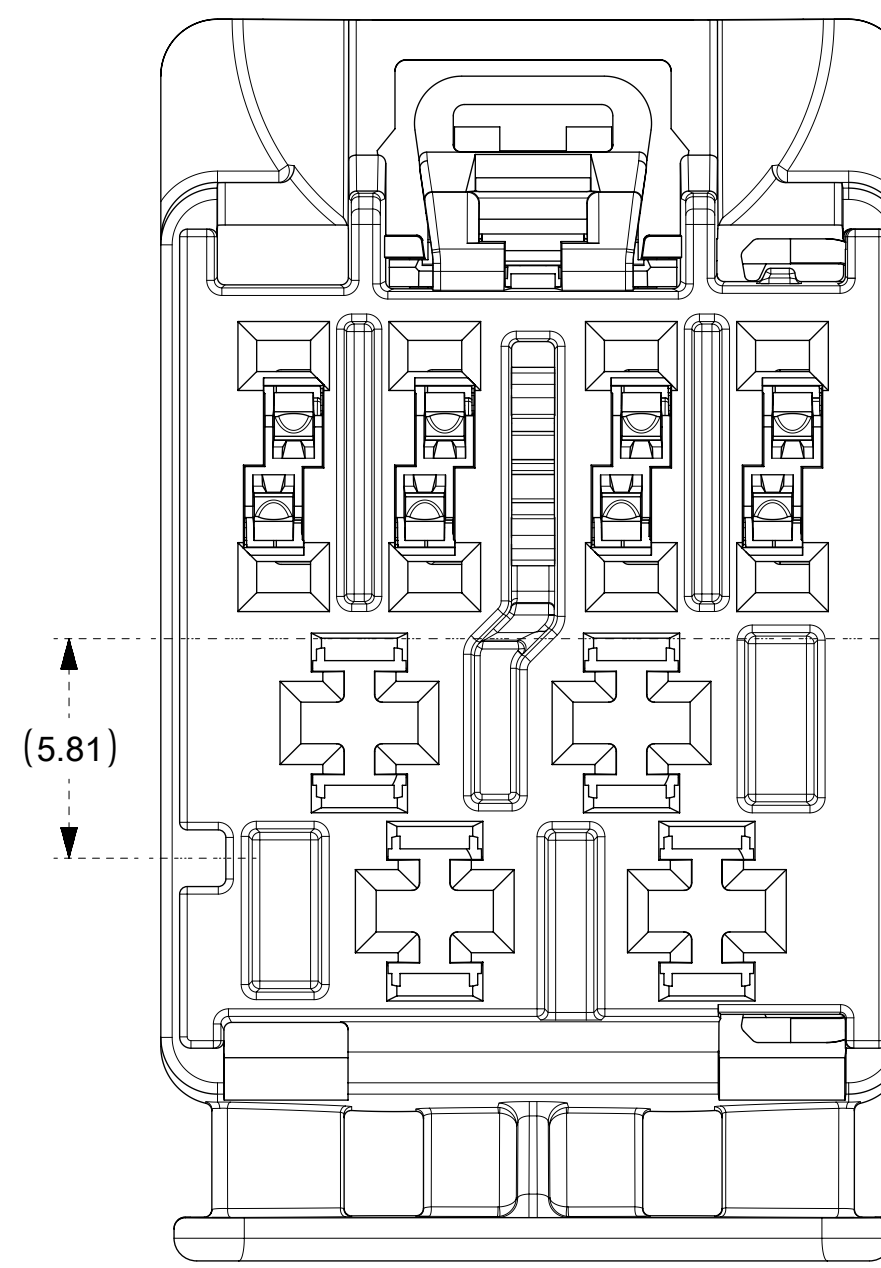
12WAY CONNECTOR ASSEMBLY
KEY 1
P/N 1600260001



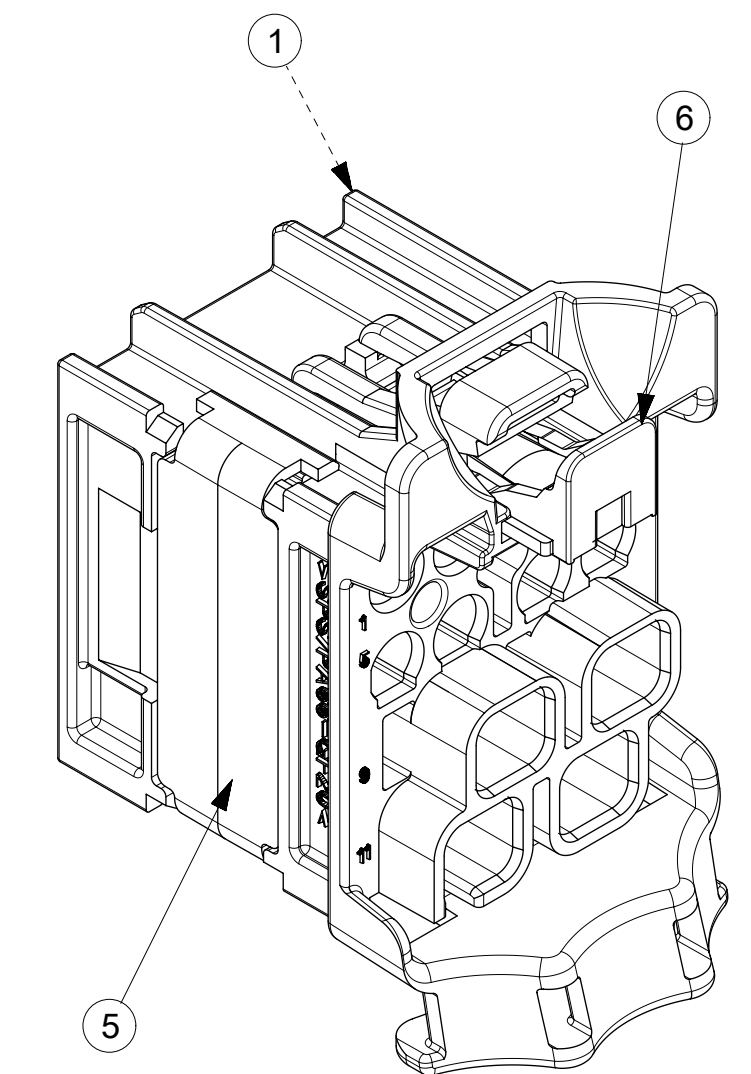
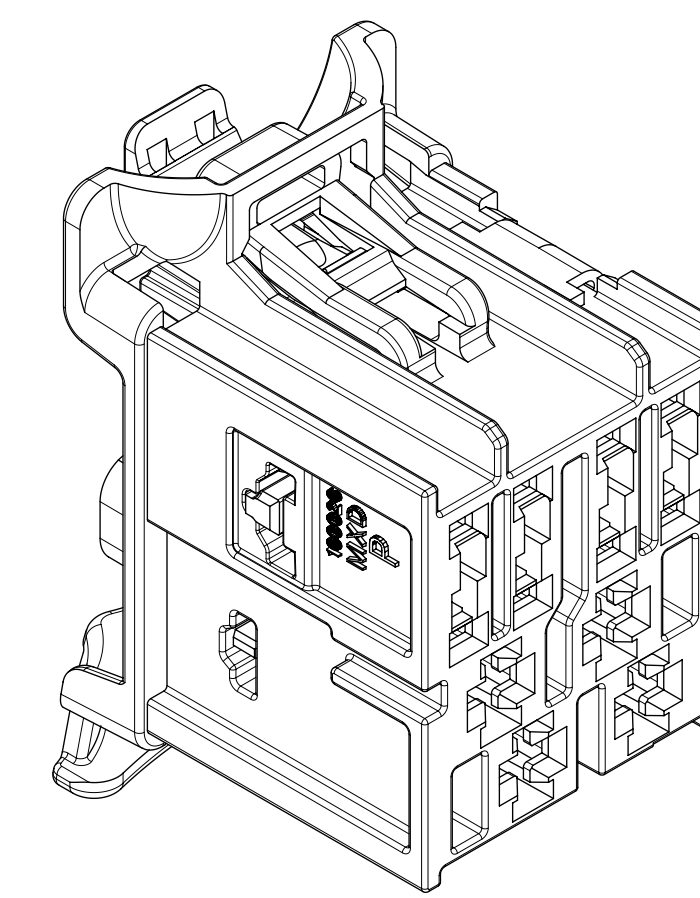
12WAY CONNECTOR ASSEMBLY
KEY 2
P/N 1600260002



12WAY CONNECTOR ASSEMBLY
KEY 3
P/N 1600260003



12WAY CONNECTOR ASSEMBLY
KEY 4
P/N 1600260004



NOTES: VALID UNLESS OTHERWISE SPECIFIED

1. GENERAL:
 - a. APPLICATION SPECIFICATION SEE: AS-160014-001
 - b. PRODUCT SPECIFICATION SEE: PS-160014-001
 - c. PACKAGING SPECIFICATION PER MOLEX DRAWING: PK-31302-266
 - d. PARTS MUST BE IN COMPLIANCE TO MOLEX CHEMICAL SUBSTANCES FOR PRODUCTS AND PACKAGING SPECIFICATION: ES-40000-5016
 - e. DATA MUST BE SUBMITTED UNDER THE MOLEX PART NUMBER TO IMDS (COMPANY ID#13255)
2. DESIGN - MATERIALS:
 - a. SEE BOM TABLE
3. DESIGN - GEOMETRY:
 - a. ALL GRAPHIC DATA IS BASIC (NO TOLERANCE) AND MUST BE TAKEN FROM THE DATA FILE AT ITS LATEST REVISION.
 - b. PRODUCT DESIGN MODEL NUMBER(S): SEE BOM TABLE
 - c. GEOMETRIC DIMENSIONS AND TOLERANCES PER ASME Y14.5M-2009
 - d. EDGES AND UNDIMENSIONED DETAILS PER ISO13715
 - e. CORNERS SHOWN AS SHARP TO BE R 0.2 MAX.
 - f. MARKED TEXT TO INCLUDE RECYCLING CODE, CAVITY ID, VENDOR IDENTIFICATION, AND CUSTOMER MATERIAL NUMBER.
 1. LASER ETCHED DATE CODE
 1ST THROUGH 2ND DIGIT = CALENDAR YEAR
 3RD THROUGH 5TH DIGIT = "DAY #" OF YEAR
 6TH THROUGH 7TH DIGIT = HOUR OF DAY
 8TH THROUGH 9TH DIGIT = MINUTE OF HOUR
 10TH THROUGH 11TH DIGIT = SECOND OF MINUTE
4. DESIGN - MANUFACTURING:
 - a. VISUAL DEFECTS SHALL MEET COSMETIC STANDARD PS-45499-002 (Class B)

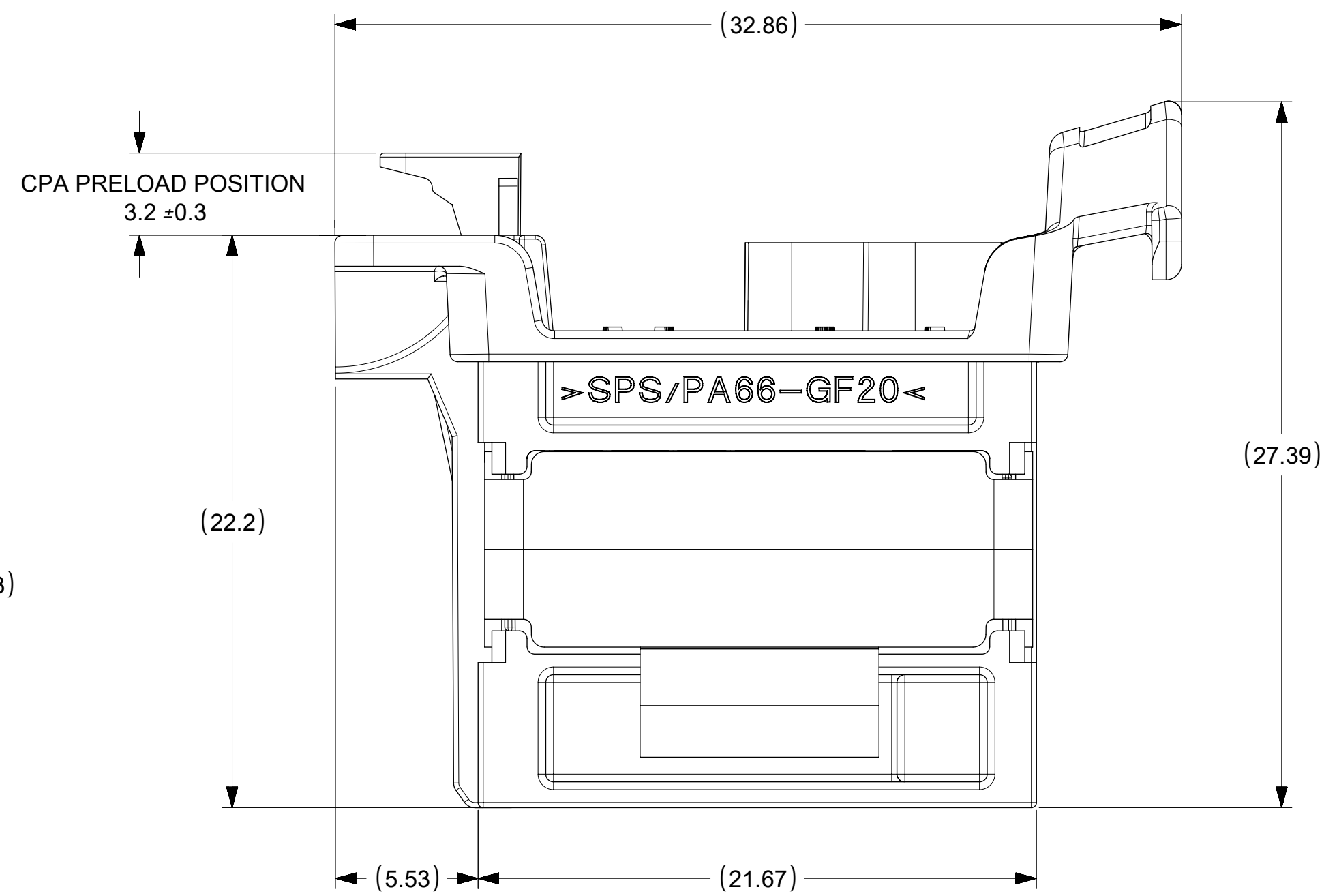
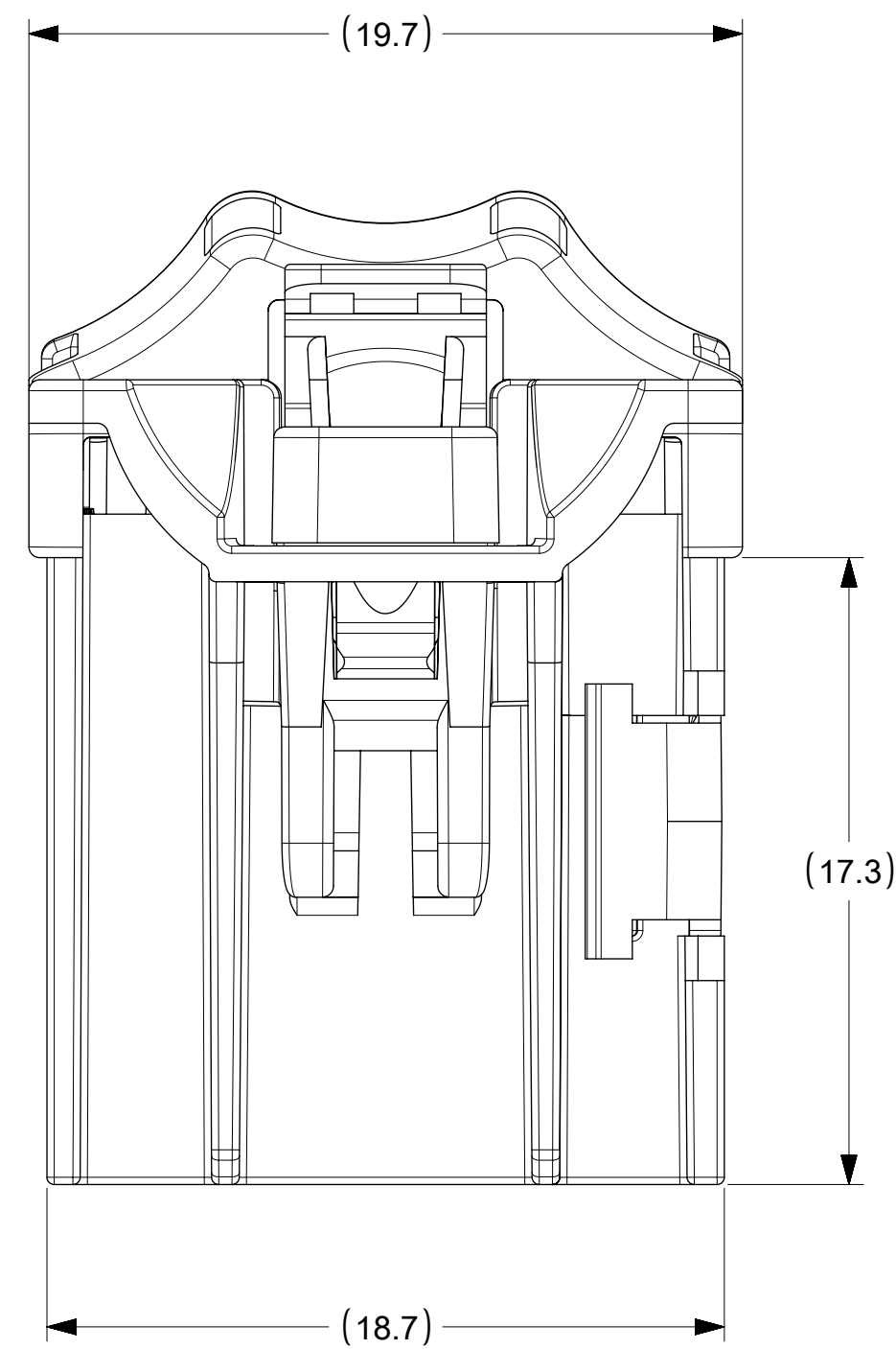
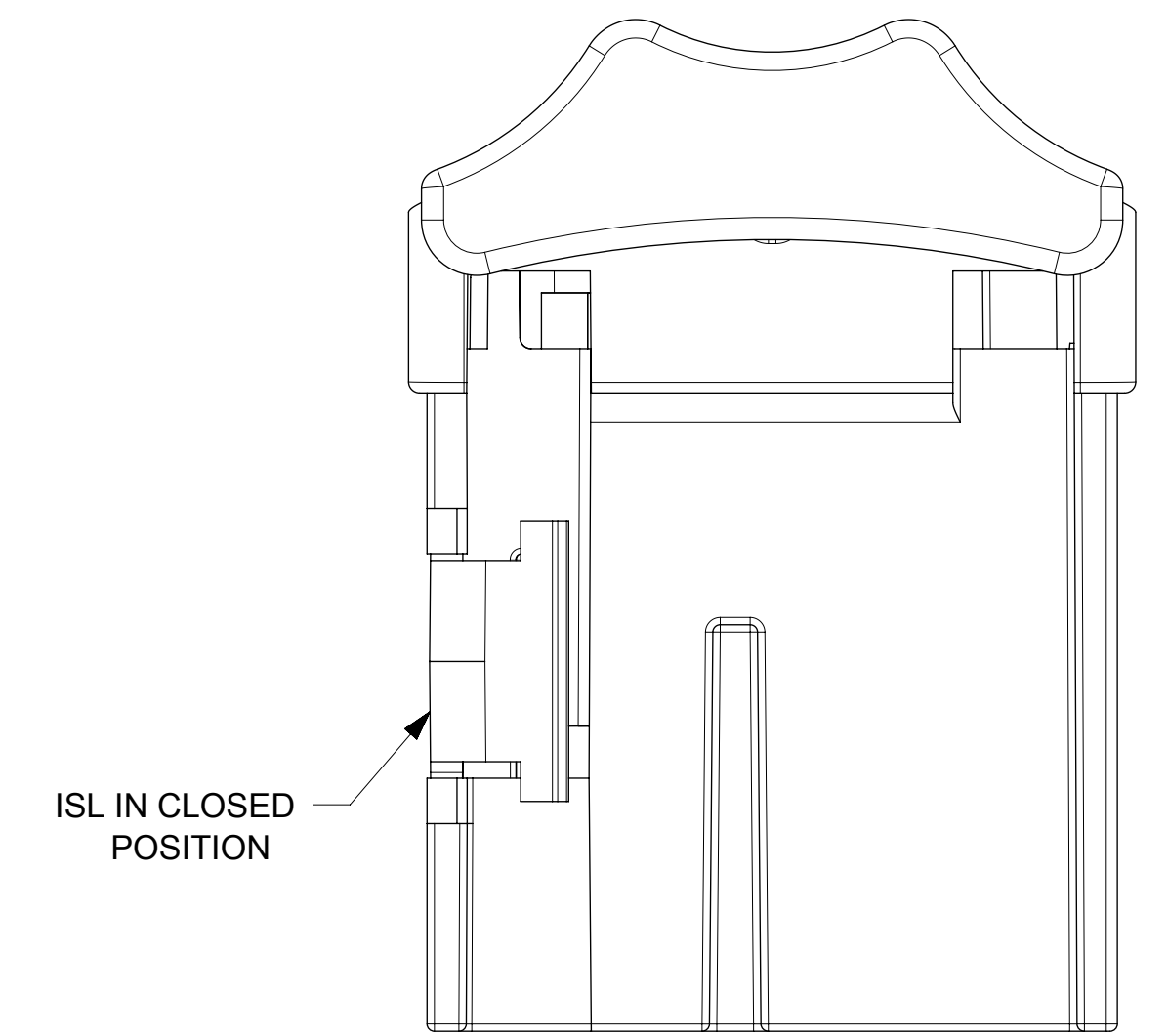
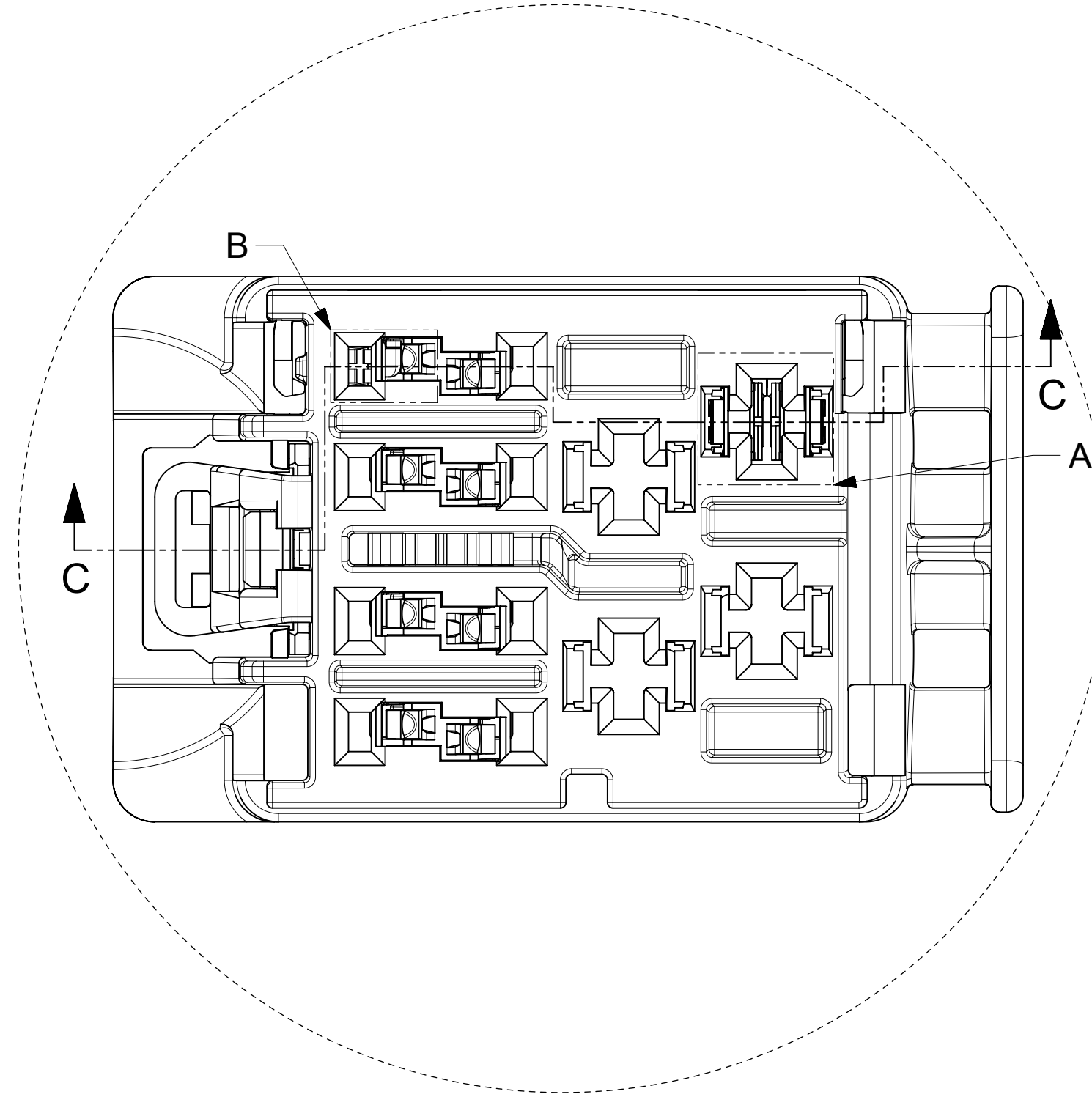
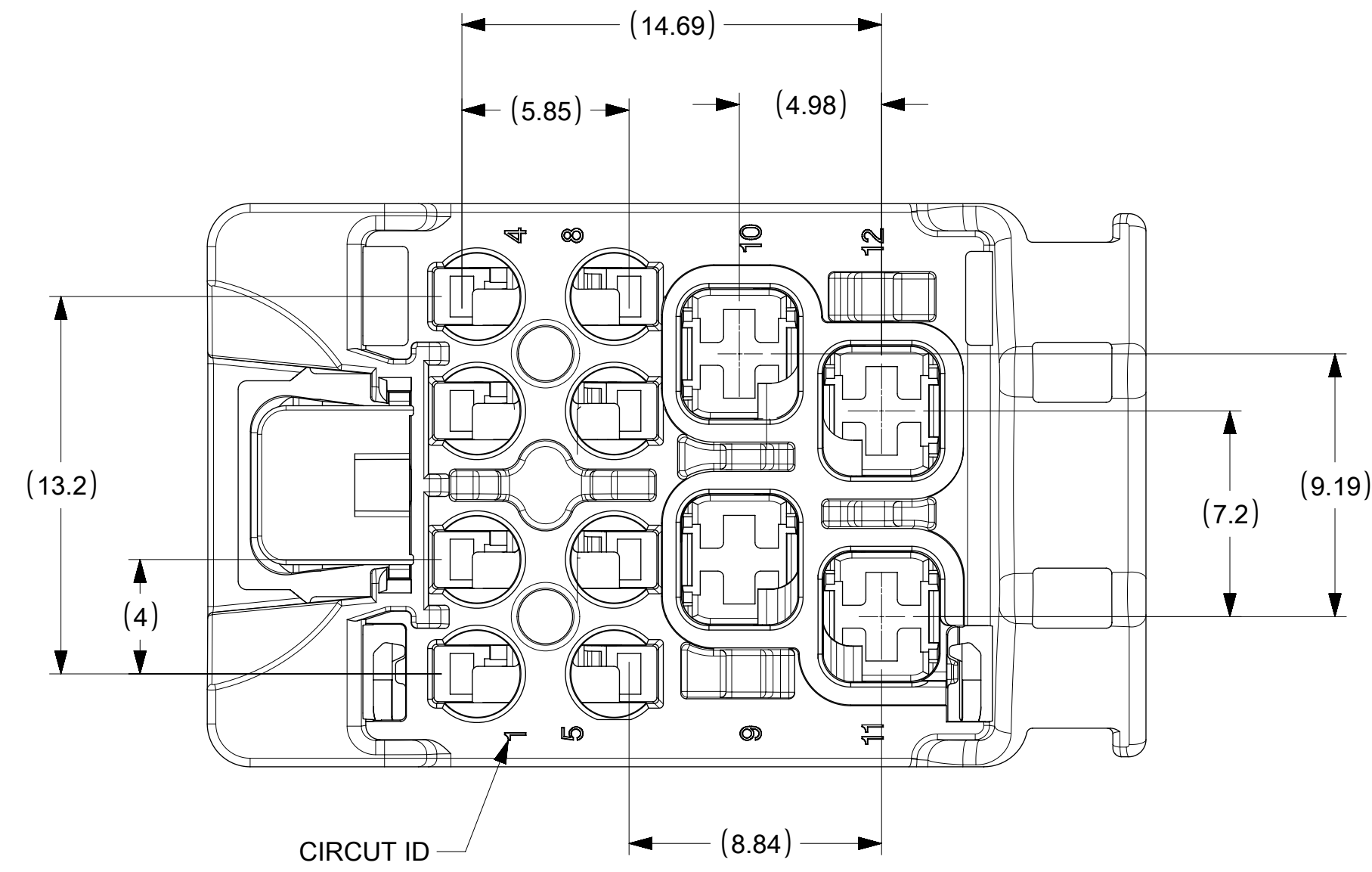
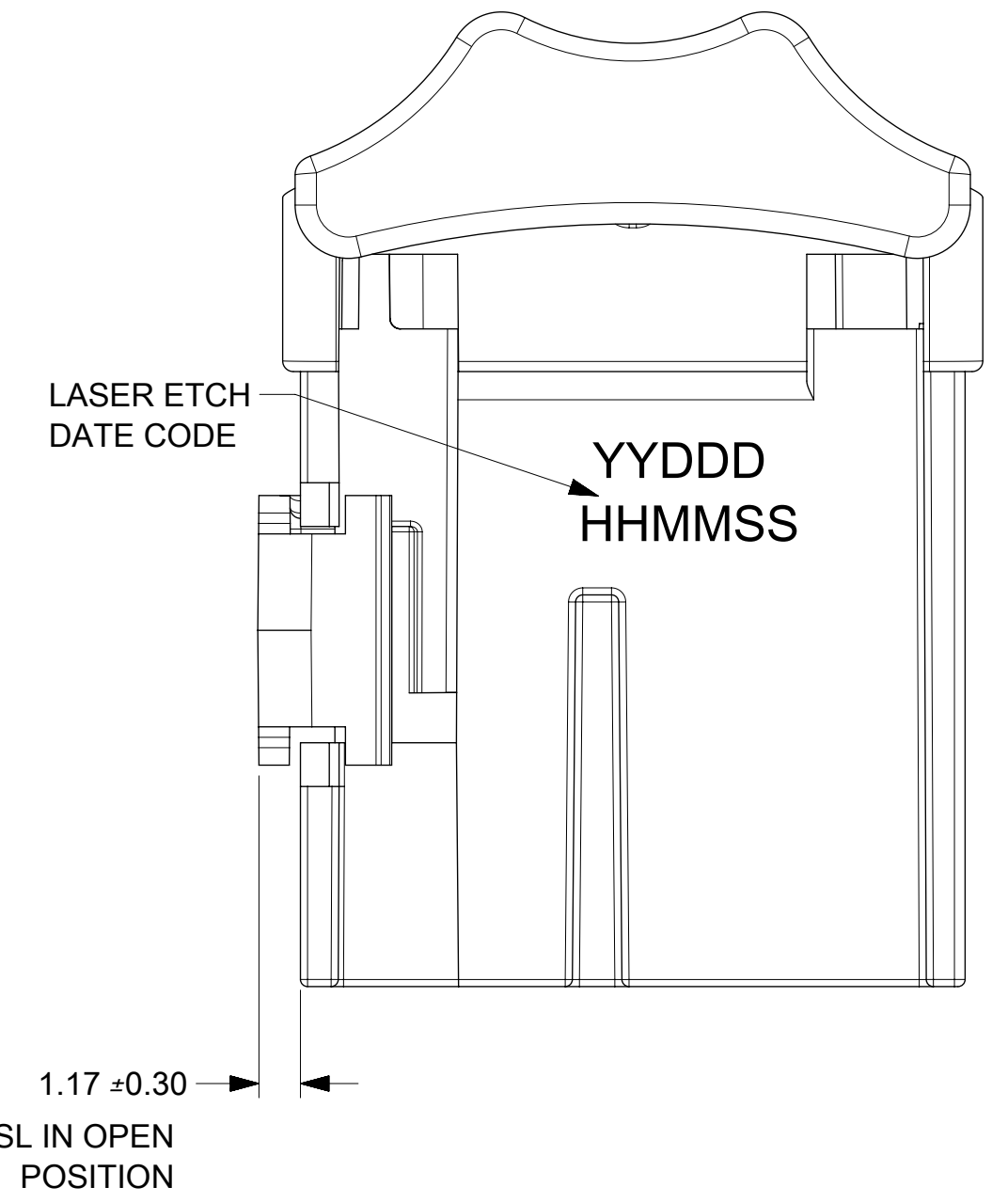
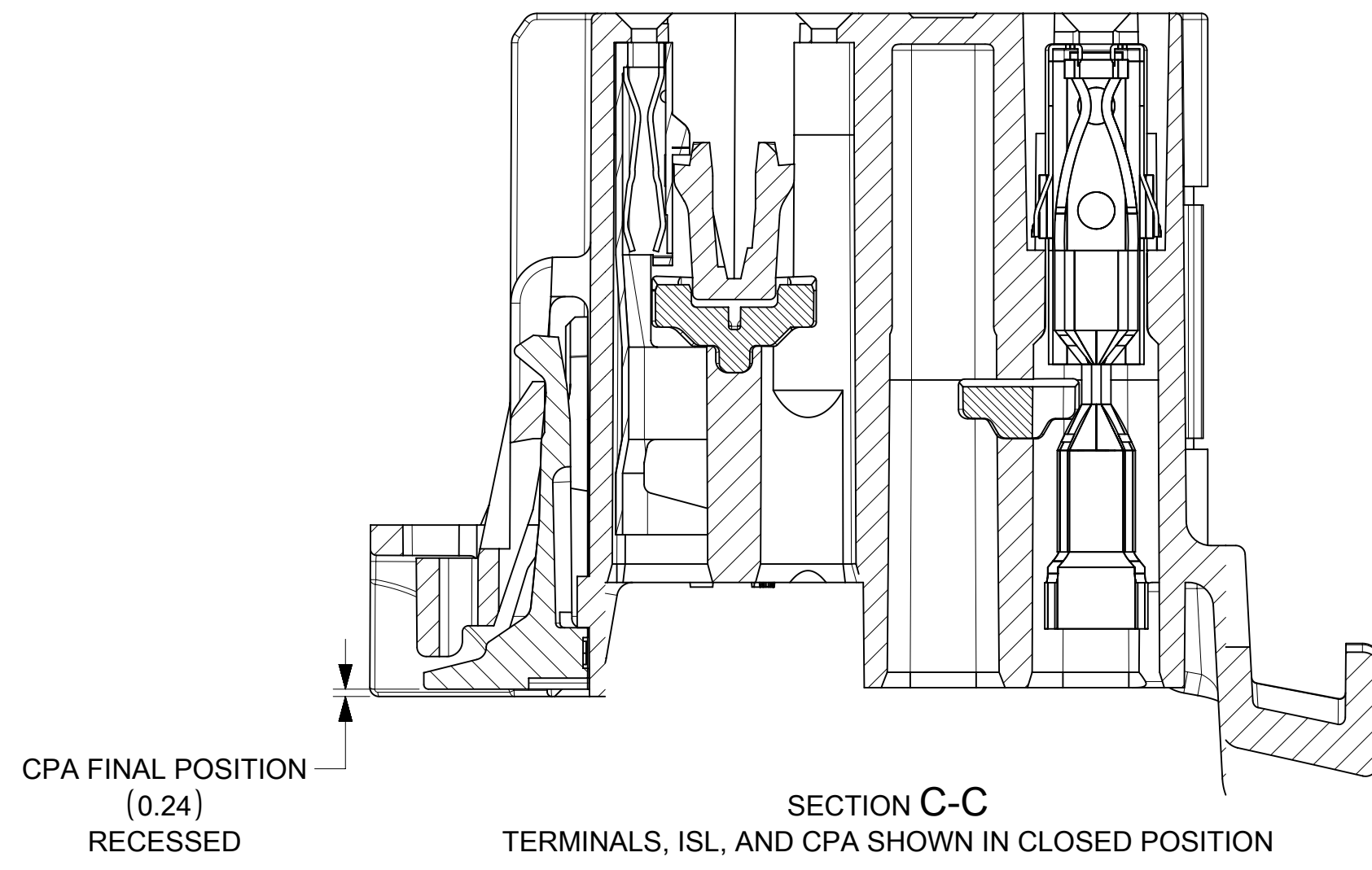
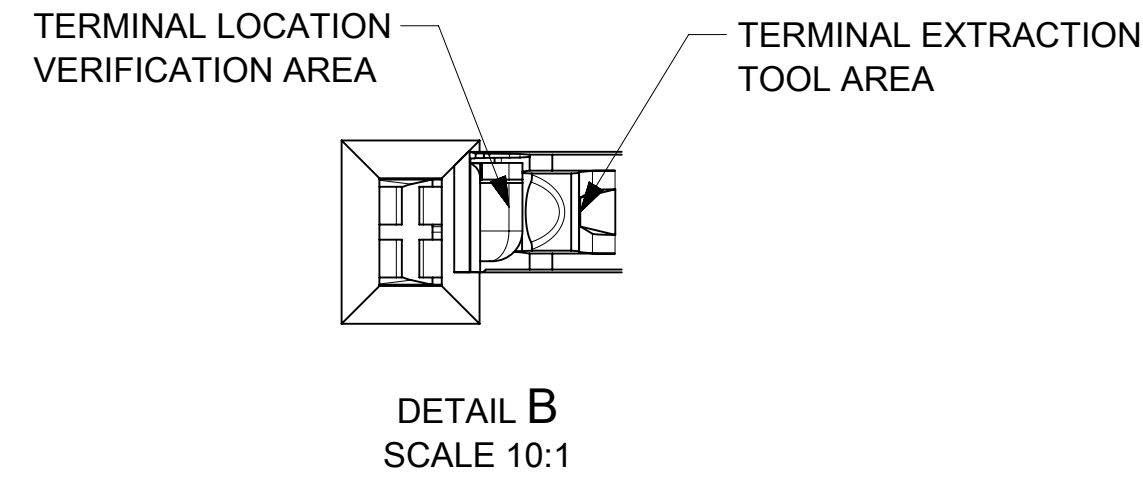
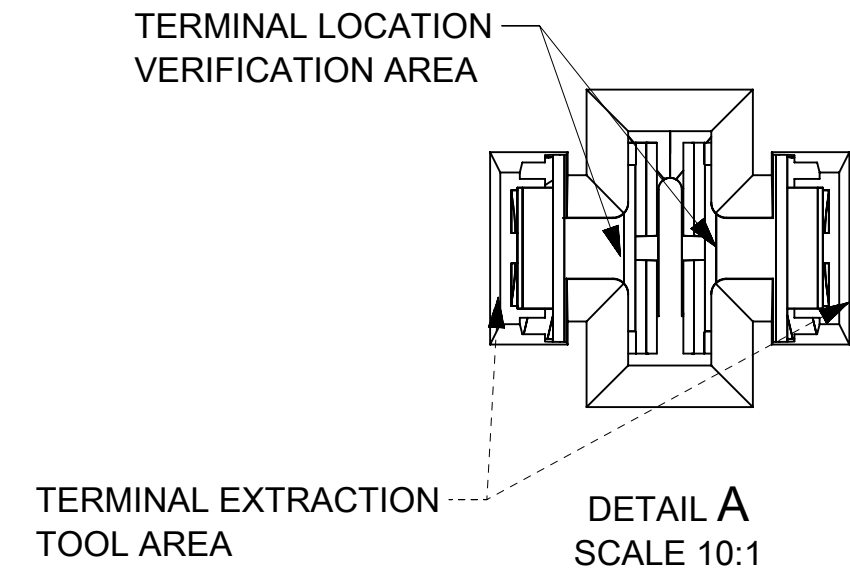
MOLEX ASSEMBLY PART NO.'S	KEY
1600260001	KEY 1
1600260002	KEY 2
1600260003	KEY 3
1600260004	KEY 4

ITEM	DESCRIPTION	COLOR	RECYCLING CODE	WEIGHT (GRAMS)	NO OF ITEMS REQUIRED
1	CONN HOUSING - KEY 1	BLACK	SPS/PA66-GF20	5.0	1
2	CONN HOUSING - KEY 2	LT GREEN B	SPS/PA66-GF20	5.0	1
3	CONN HOUSING - KEY 3	LT PURPLE	SPS/PA66-GF20	5.0	1
4	CONN HOUSING - KEY 4	LT GRAY	SPS/PA66-GF20	5.0	1
5	ISL	NATURAL	SPS-GF30	0.37	1 1 1 1
6	CPA	NATURAL	PA66-GF50	0.08	1 1 1 1

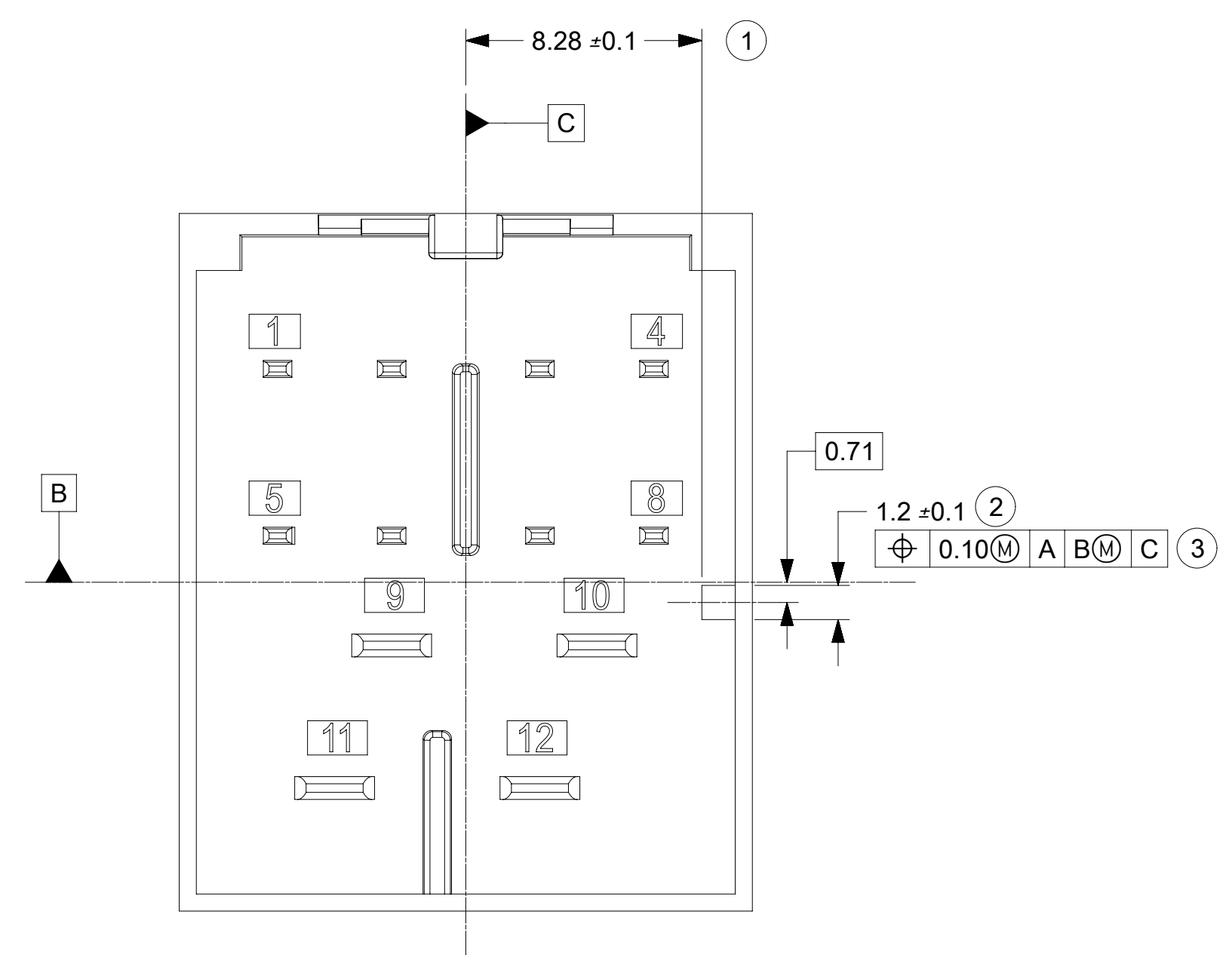
PART NUMBER	PLATING	SUPPLIER	WIRE GAGE (mm2)	TERMINAL FAMILY	WIRE SPECIFICATION
13881789	TIN PLATING	DELPHI	0.35 - 0.5	TAXI TERM OCS 1.2	SAE/ J1128 THIN WALL INSULATION
13881788	TIN PLATING	DELPHI	0.75 - 0.8	TAXI TERM OCS 1.2	
SMSA-A031T-M1.2	TIN PLATING	JST	0.5 - 0.75	MSA 1.2mm TERMINAL	
SMSA-A041T-M1.2	TIN PLATING	JST	1.0 - 1.5	MSA 1.2mm TERMINAL	
1-968851-1	TIN PLATING	TE	1.0 - 2.5	AMP MCP 2.8	GMW 15626 INSULATION TYPE FLR (REGULAR THIN WALL)
1-968849-1	TIN PLATING	TE	0.5 - 1.0	AMP MCP 2.8	
15457849	TIN PLATING	DELPHI	1.5 - 2.5	CTS 2.8mm	
15457848	TIN PLATING	DELPHI	0.5 - 1.0	CTS 2.8mm	

B	UPDATED VIEWS SAP#: 10898772
A	NX RE-MASTERING SAP # 10816434
4	UAU2015-1899 SAP # 10698159 JCONDON 06/17/2015
3	UAU2015-1606 SAP # 10685685 JCONDON 04/23/2015
1	RELEASE FOR PROTOTYPE SAP # XXXXXXXX

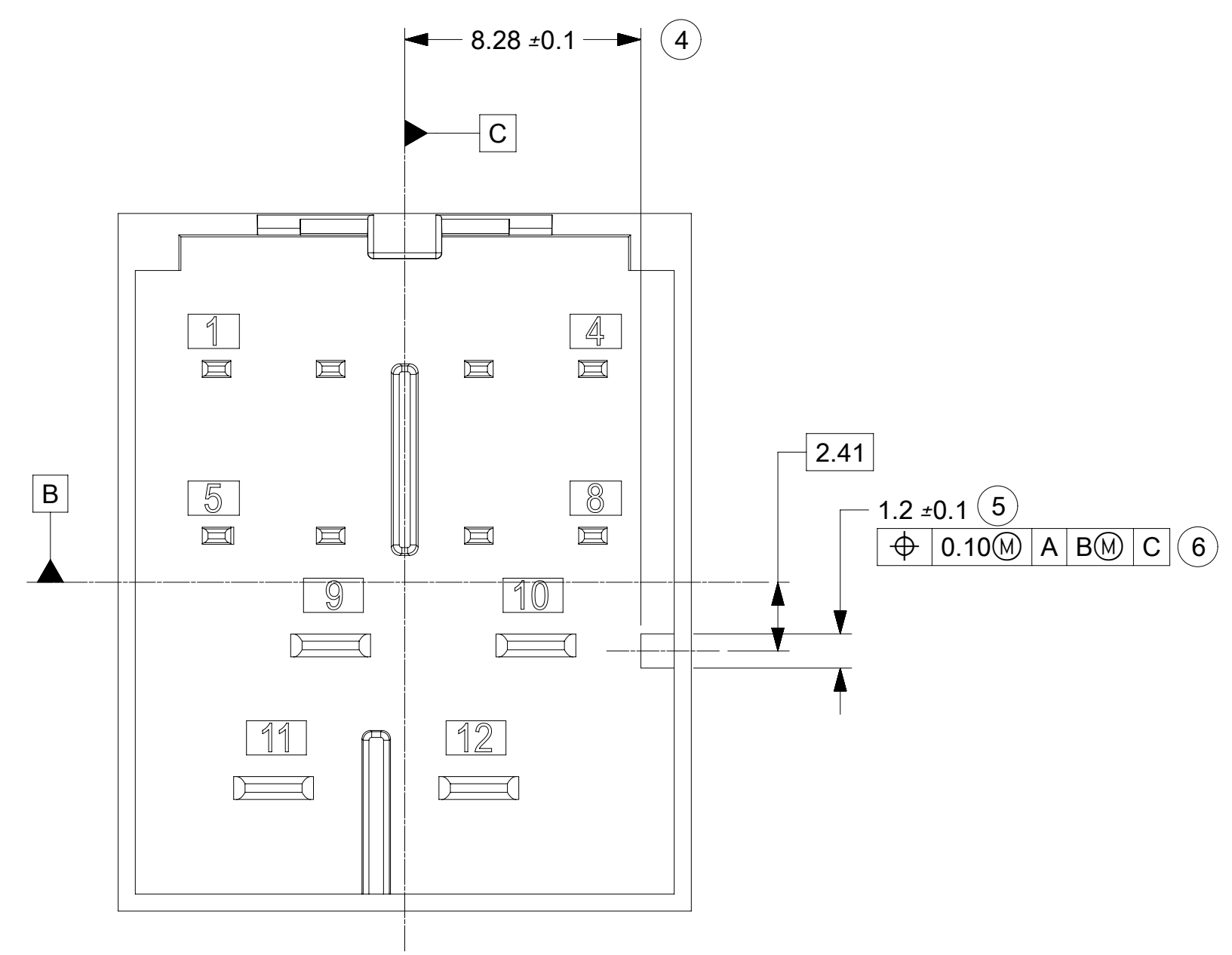
SYMBOLS	THIS DRAWING CONTAINS INFORMATION THAT IS PROPRIETARY TO MOLEX ELECTRONIC TECHNOLOGIES, LLC AND SHOULD NOT BE USED WITHOUT WRITTEN PERMISSION
▽ = 0	DIMENSION UNITS: mm
▽ = 0	SCALE: CURRENT REV DESC: UPDATE VIEWS
▽ = 0	GENERAL TOLERANCES (UNLESS SPECIFIED)
▽ = 0	ANGULAR TOL ± 3.0°
▽ = 0	4 PLACES ±
▽ = 0	3 PLACES ±
▽ = 0	2 PLACES ± 0.3
▽ = 0	1 PLACE ± 0.3
▽ = 0	0 PLACES ± 0.3
▽ = 0	DRAFT WHERE APPLICABLE MUST REMAIN WITHIN DIMENSIONS
▽ = 0	THIRD ANGLE PROJECTION
▽ = 0	DRAWING: D-SIZE
▽ = 0	SERIES: 160026
12WAY STAK50H HYBRID CONNECTOR ASSEMBLY	
PRODUCT CUSTOMER DRAWING	
DOCUMENT NUMBER	DOC TYPE DOC PART REVISION
SD-160026-0001	PSD 000 B
MATERIAL NUMBER	CUSTOMER SHEET NUMBER
GENERAL MARKET	1 OF 2



SYMBOLS		THIS DRAWING CONTAINS INFORMATION THAT IS PROPRIETARY TO MOLEX ELECTRONIC TECHNOLOGIES, LLC AND SHOULD NOT BE USED WITHOUT WRITTEN PERMISSION		CURRENT REV DESC: UPDATE VIEWS	
▽ = 0	mm	DIMENSION UNITS	SCALE		
▽ = 0	GENERAL TOLERANCES (UNLESS SPECIFIED)				
▽ = 0	ANGULAR TOL ± 3.0°				
▽ = 0	4 PLACES ±	EC NO: 176550			
▽ = 0	3 PLACES ±	DRWN: JCONDON 2018/05/08			
▽ = 0	2 PLACES ± 0.3	CHK'D: JCONDON 2018/07/26			
▽ = 0	1 PLACE ± 0.3	APPR: JCONDON 2018/07/26			
▽ = 0	0 PLACES ± 0.3	INITIAL REVISION:			
▽ = 0	DRAFT WHERE APPLICABLE MUST REMAIN WITHIN DIMENSIONS		THIRD ANGLE PROJECTION	DRAWING	SERIES
▽ = 0			⊕	D-SIZE	160026
DOCUMENT STATUS		RELEASE DATE		MATERIAL NUMBER	
P1	2018/07/26	20:42:13		SD-160026-0001	
PRODUCT CUSTOMER DRAWING				DOC TYPE	DOC PART
				PSD	000
				REVISION	B
GENERAL MARKET				SHEET NUMBER	
				2 OF 2	



INTERFACE KEY #1
MATING CONNECTOR : BLACK



INTERFACE KEY #2
MATING CONNECTOR : LT GREEN B

NOTES: VALID UNLESS OTHERWISE SPECIFIED

1. DESIGN - MATERIALS:

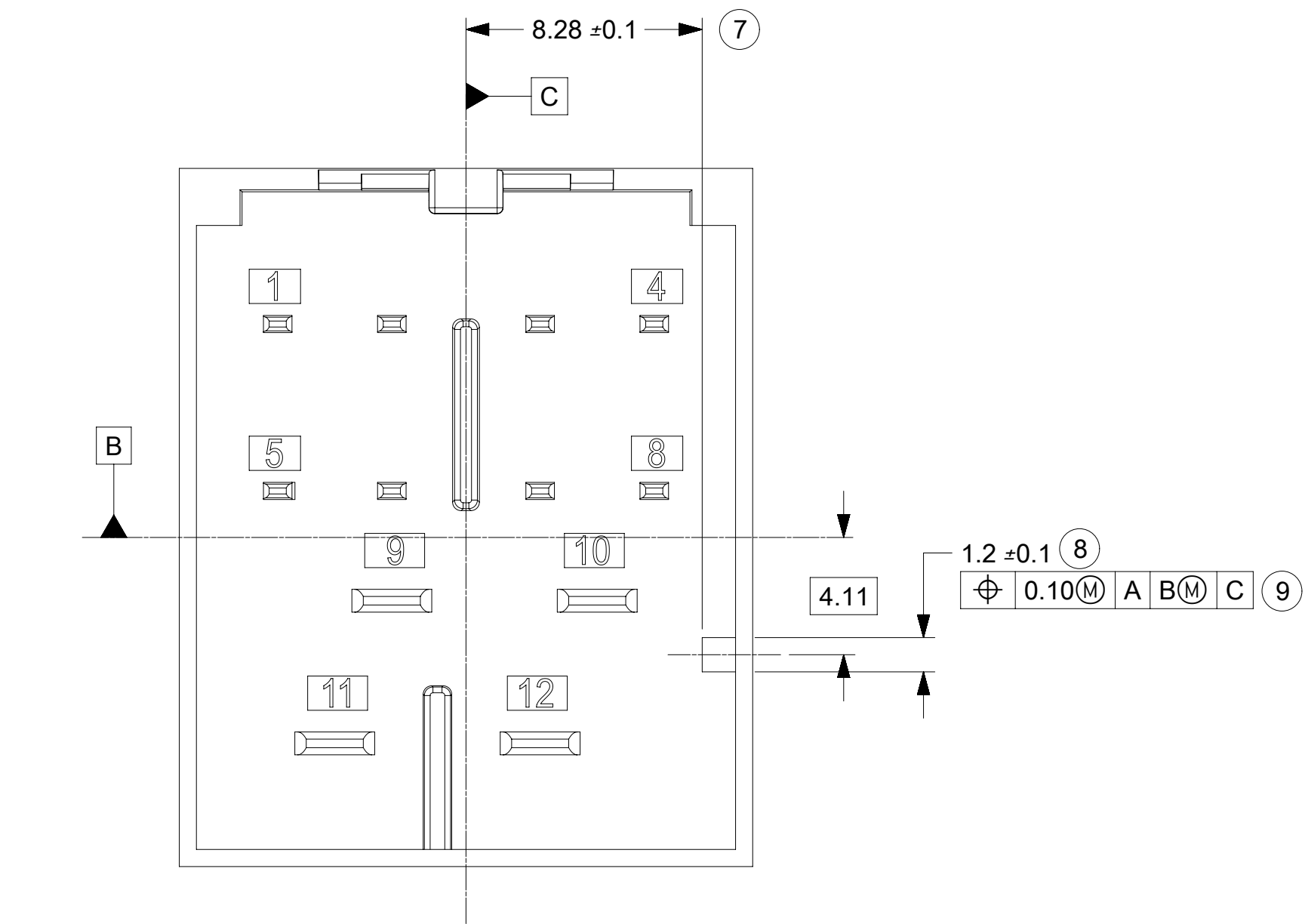
- a. RESIN MATERIAL : PBT+GF30 OR SPS+GF30 OR EQUIVALENT
- b. PIN/BLADE MATERIAL : ACCORDING TO USCAR DRAWING EWCAP-001 NOTE B2
- c. PLATING: ACCORDING TO USCAR DRAWING EWCAP-001 TIN REFLOW WITH UNDERPLATE
- d. PIN TIPS ACCORDING TO USCAR DRAWING EWCAP-001 (120-T002 & 280-T001)
- e. DEVIATION TO EWCAP-001 ACCEPTABLE IF PERFORMANCE(ELECTRICAL/MECHANICAL) IS SHOWN TO BE EQUAL OR BETTER AS REQUIRED BY VALIDATION TESTING.

2. DRAWING - GEOMETRY:

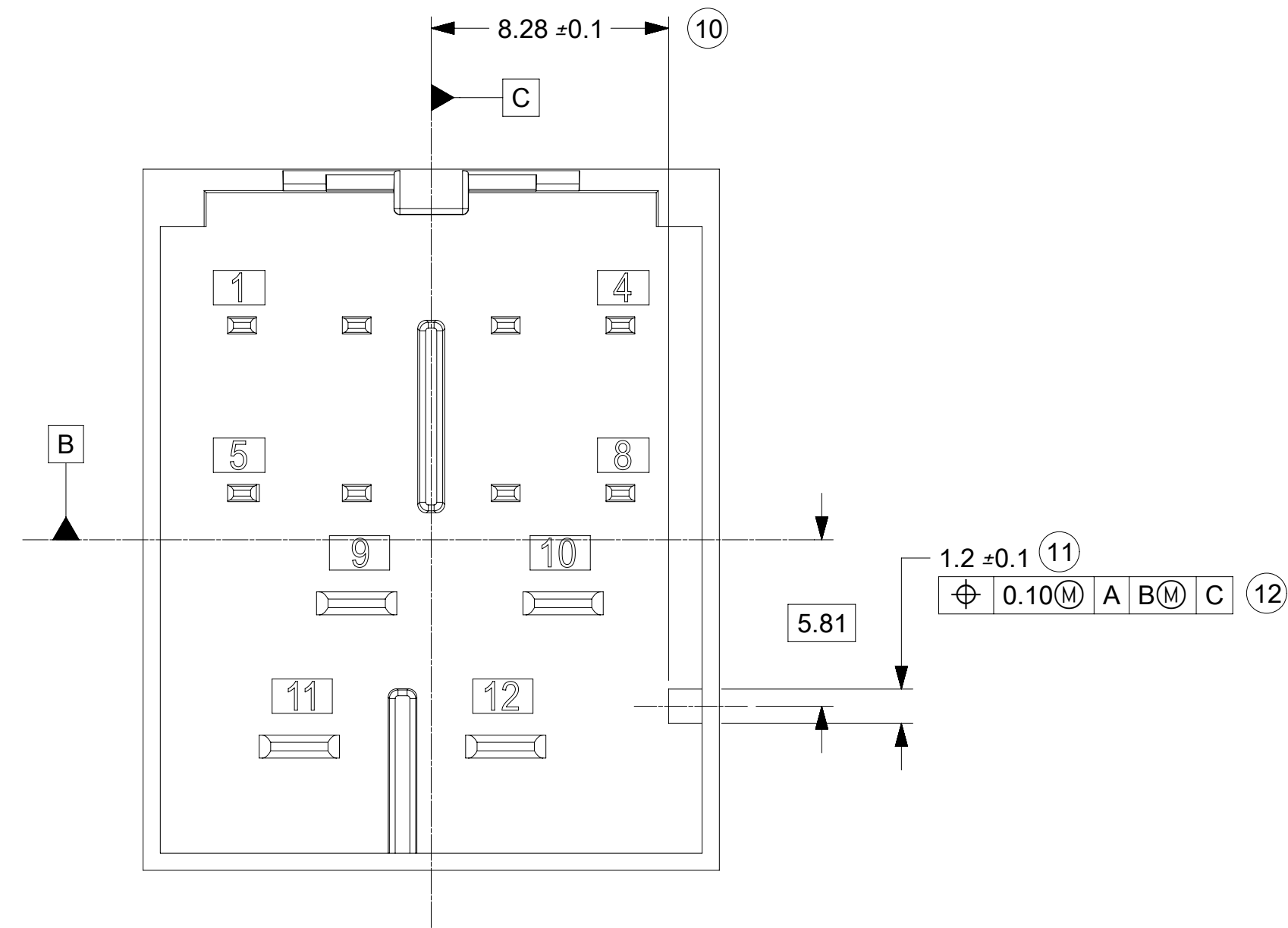
- a. ALL GRAPHIC DATA IS BASIC (NO TOLERANCE) AND MUST BE TAKEN FROM THE DATA FILE AT ITS LATEST REVISION.
- b. GEOMETRIC DIMENSIONS AND TOLERANCES PER ASME Y14.5M-2009.
- c. GENERAL TOLERANCES:
LINEAR : PER DIN 16901 LINEAR CODE B FOR PRECISION ENGINEERING
ANGULAR : ±3°
- d. EDGES AND UNDIMENSIONED DETAILS PER ISO13715
- e. CORNERS SHOW AS SHARP TO BE R 0.2 MAX.
- f. LETTERS SHALL BE 0.15MAX RAISED IN 0.25 MAX RECESSED PAD.
THIS INCLUDES RECYCLING CODE, CAVITY ID, VENDOR IDENTIFICATION,
AND CUSTOMER MATERIAL NUMBER.
(for small parts : LETTERING SHALL BE 0.10 MAX RAISED IN 0.15 MAX RECESS PAD)

3. DESIGN - MANUFACTURING:

- a. DRAFT TO BE WITHIN TOLERANCE.



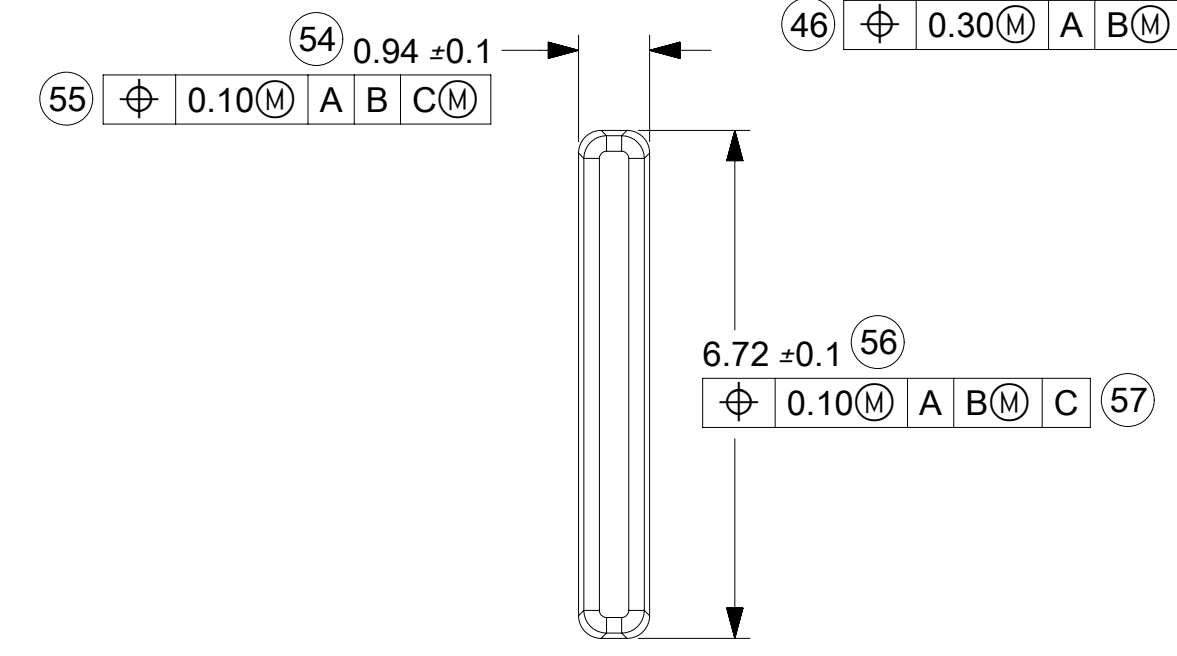
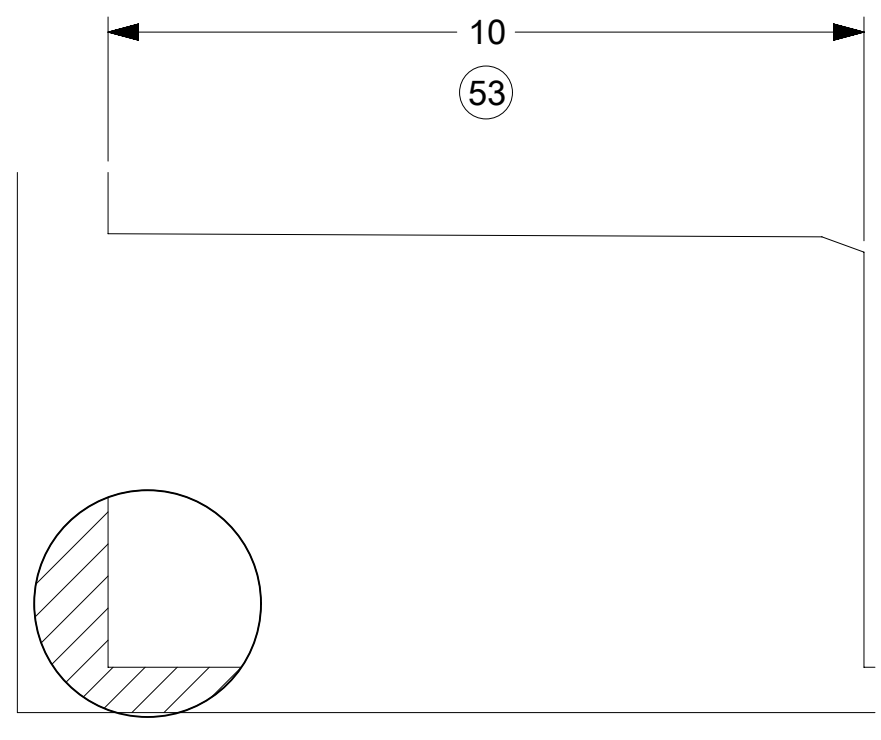
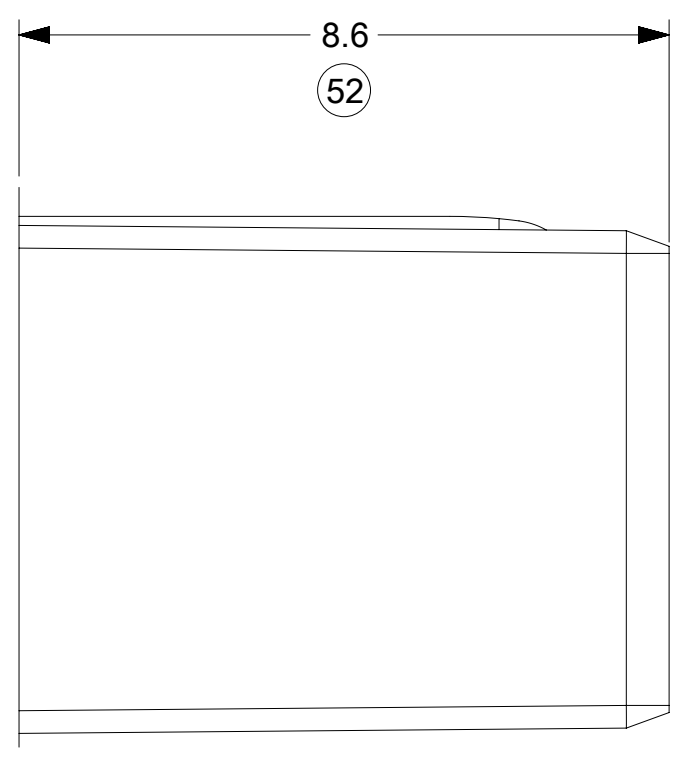
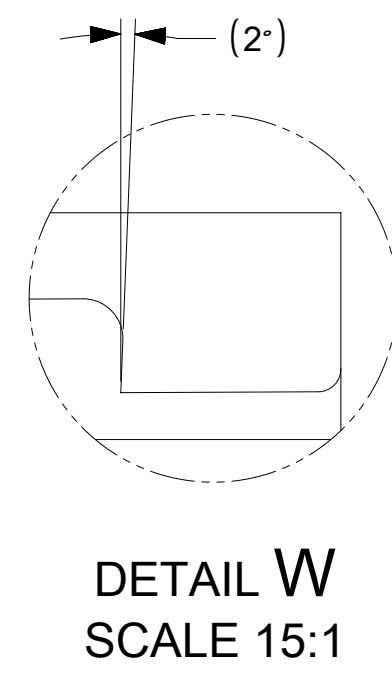
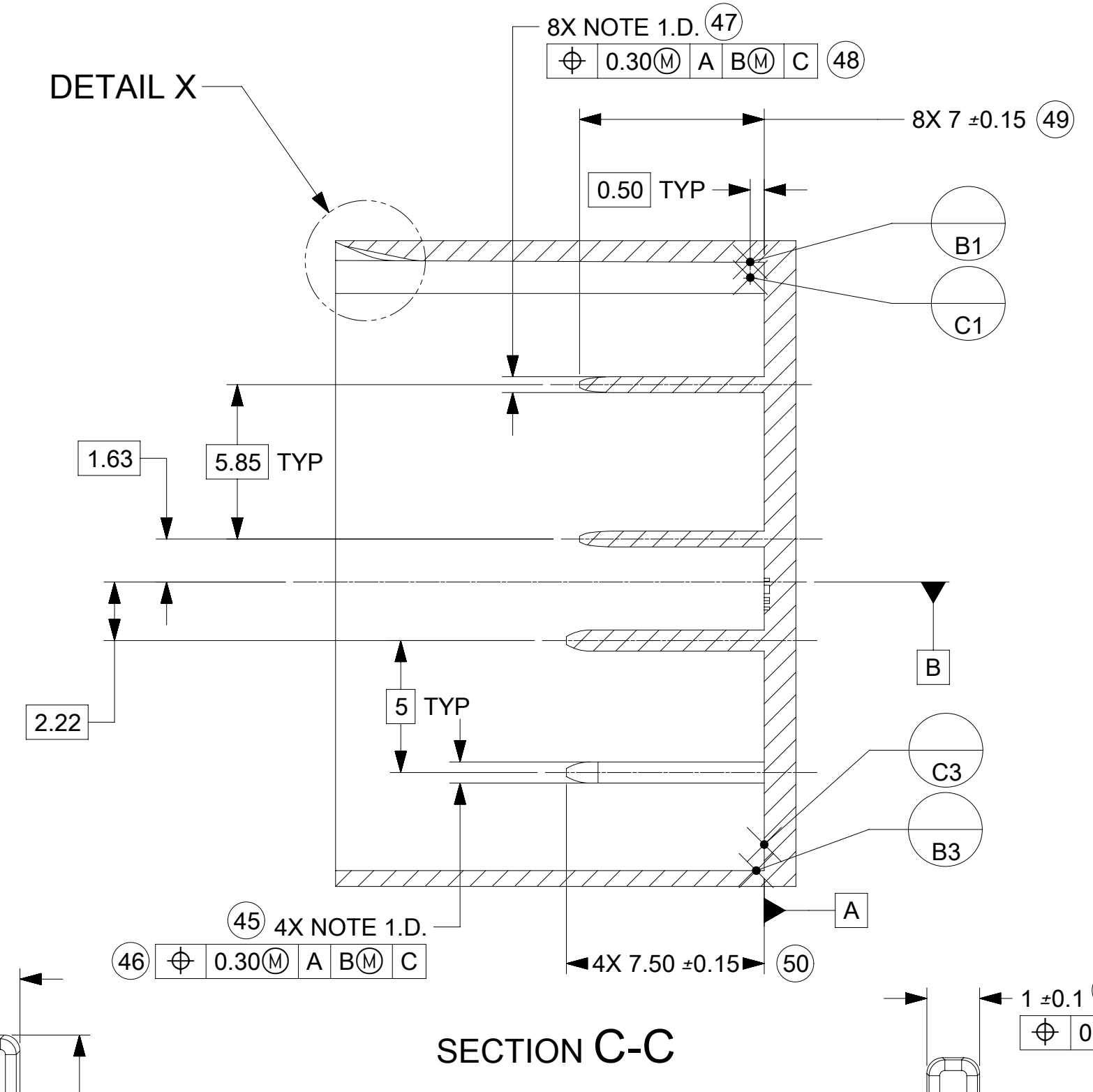
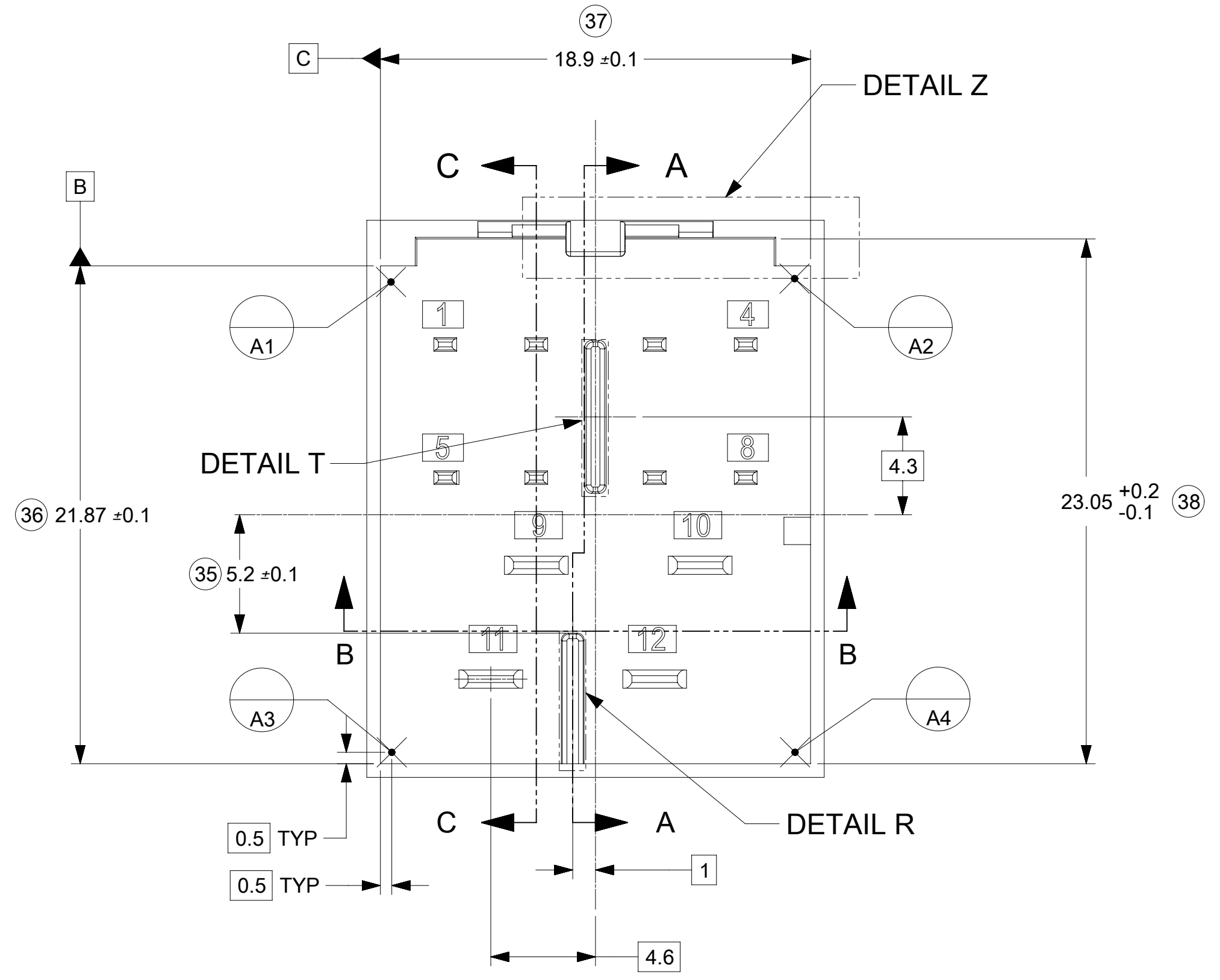
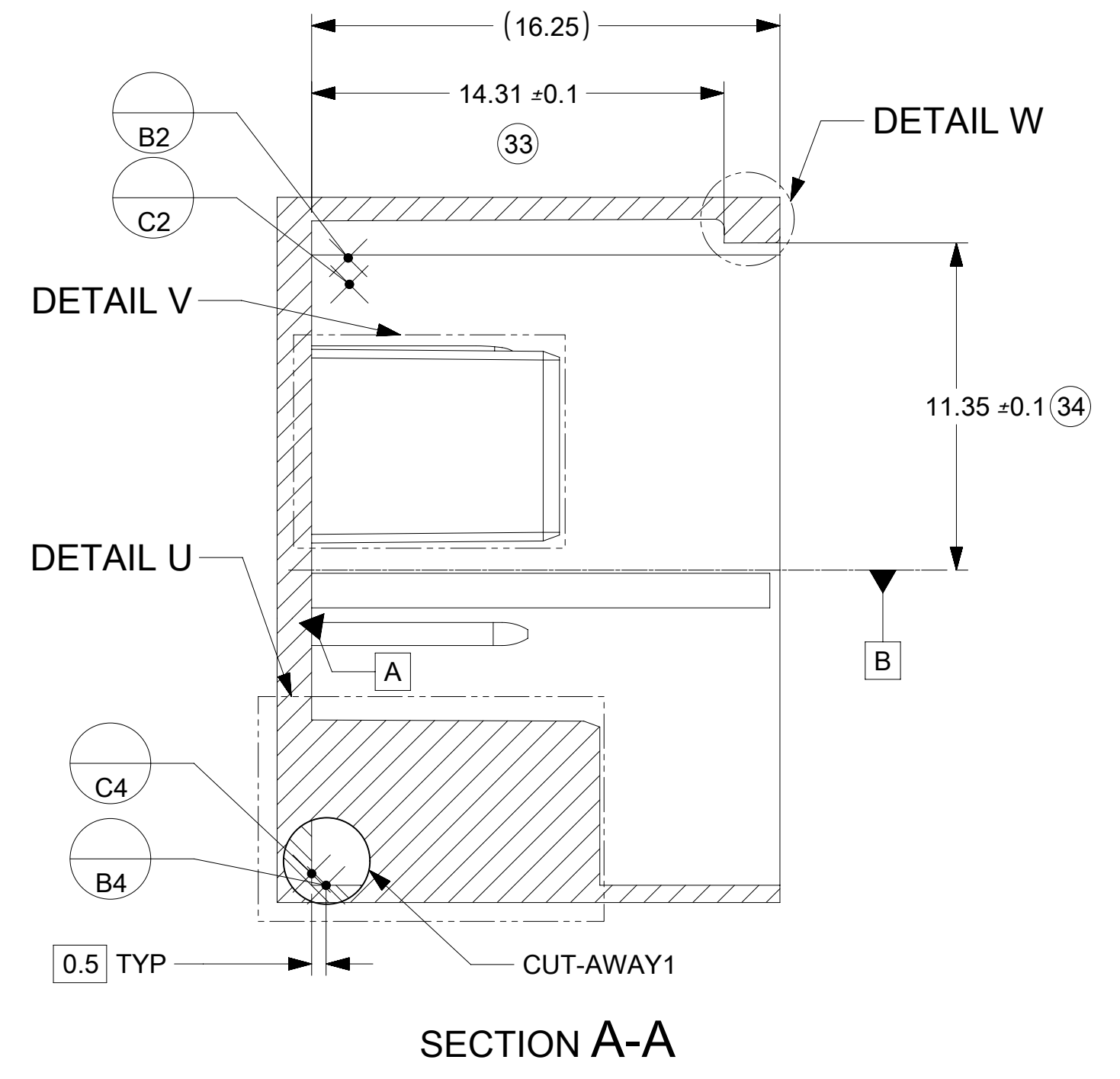
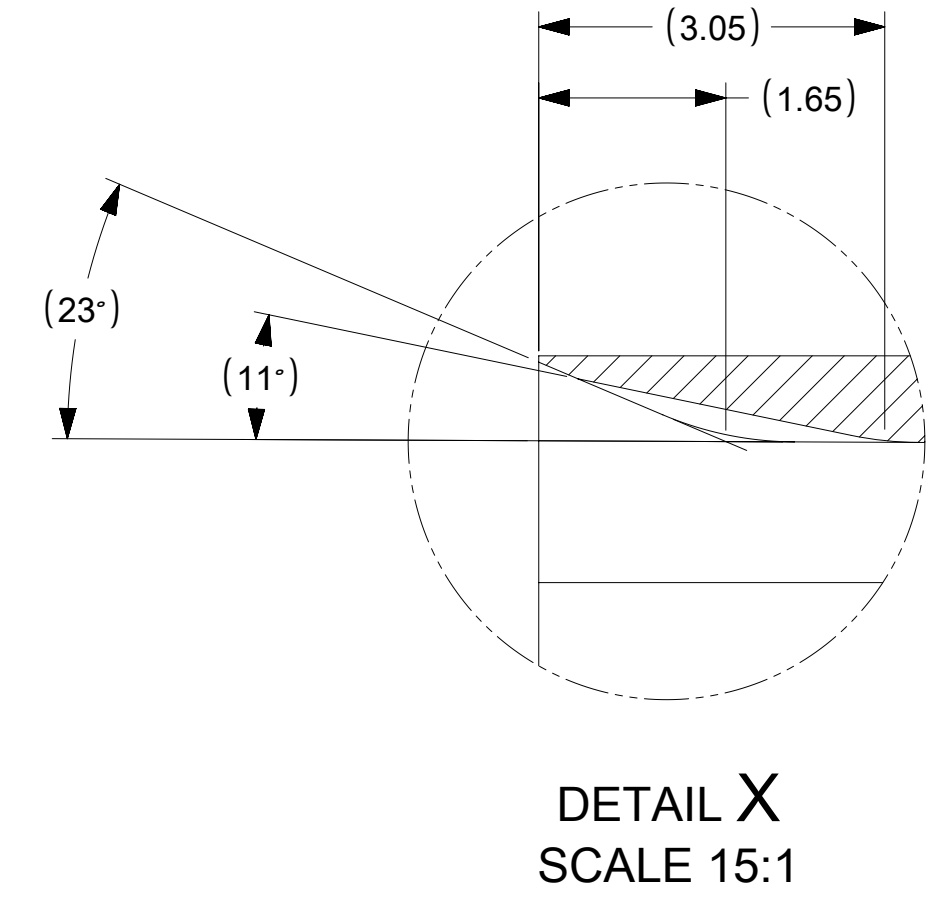
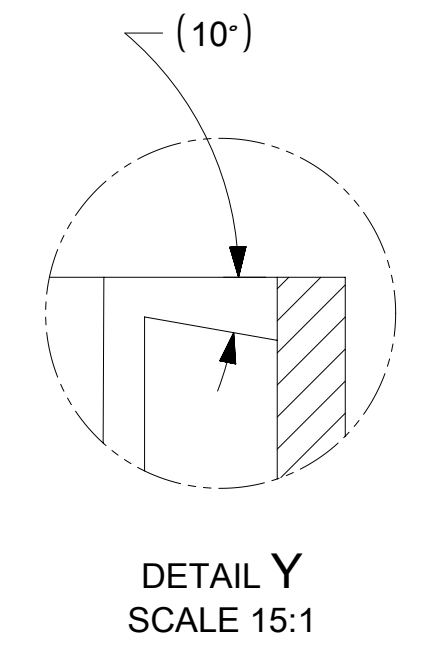
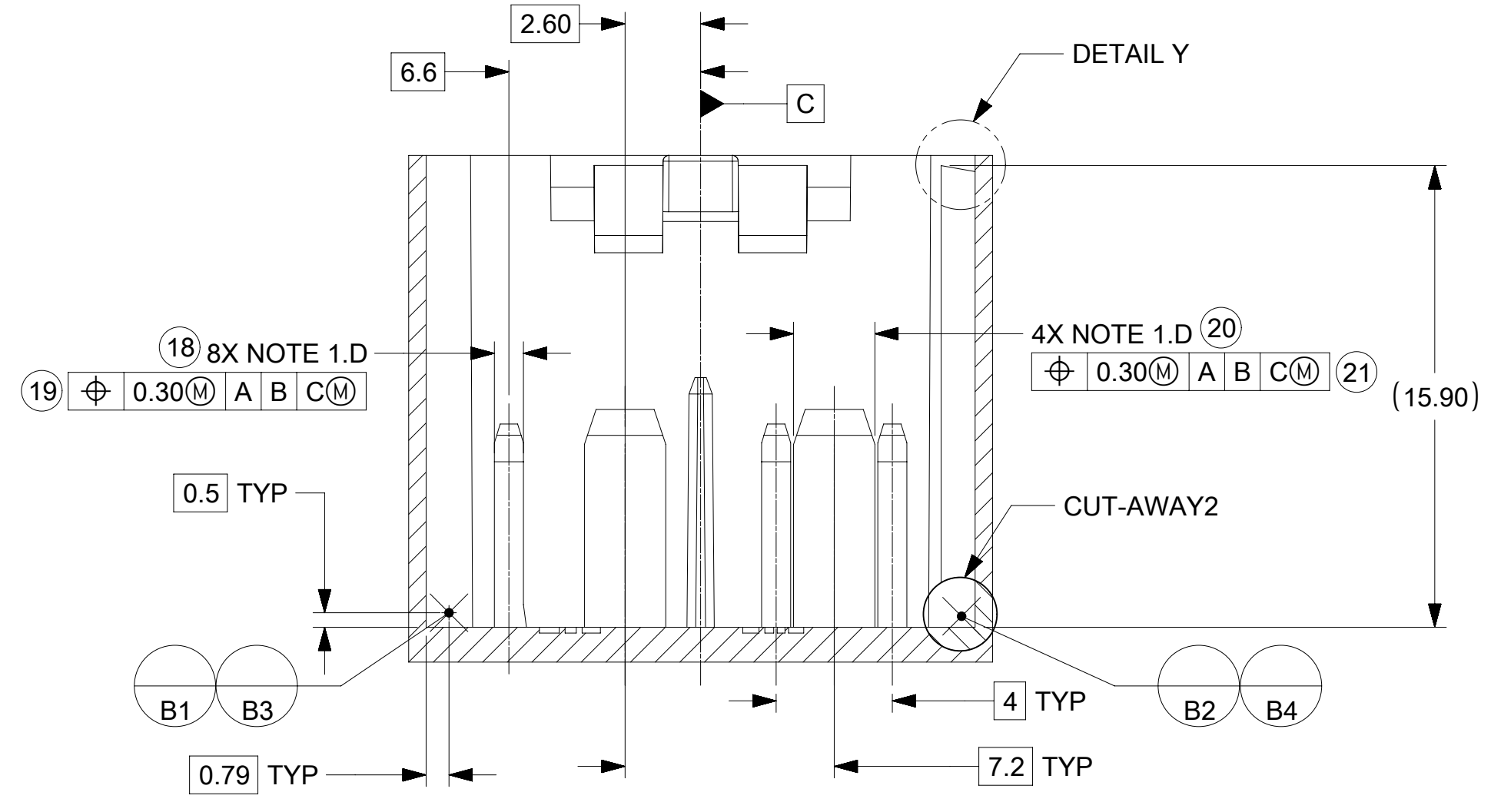
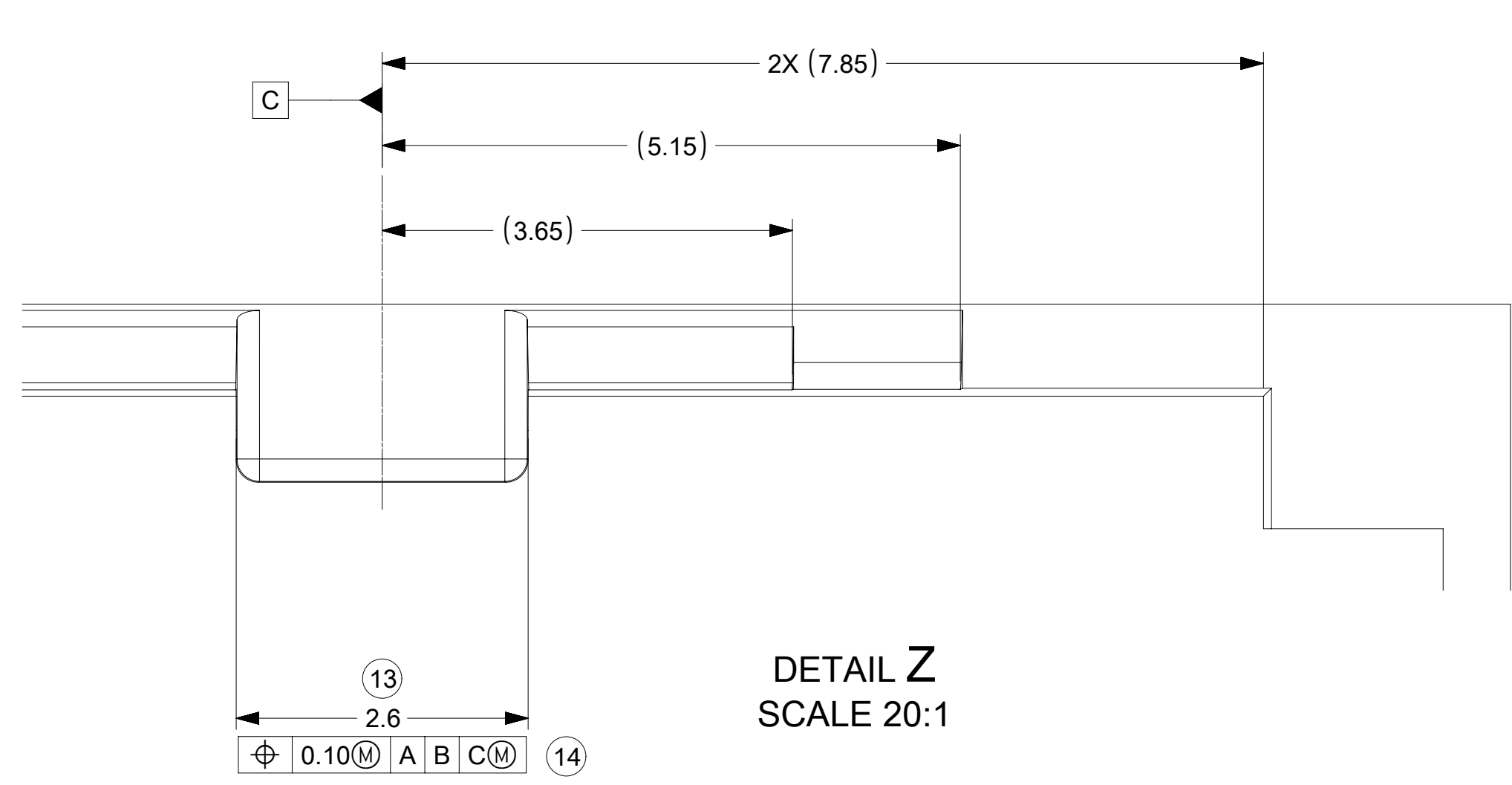
INTERFACE KEY #3
MATING CONNECTOR : LT PURPLE



INTERFACE KEY #4
MATING CONNECTOR : LT GRAY

B1	ADDED BALLOONS JCONDON 07/31/2018
B	REMOVED 0.2MM FROM CONNECTOR LOCK TAB FEATURE
A3	DRAWING CLEANUP
A2	ADDED CIRCUIT IDs
A1	ADDED NOTE 1e, MKOWALSKY 7/7/2017
7	GEOMETRY UPDATED, SPEMMARAJU 02/18/2016
6	UAU2015-1446 , SAP#10681629 , JCONDON 03/25/2015

SYMBOLS	THIS DRAWING CONTAINS INFORMATION THAT IS PROPRIETARY TO MOLEX ELECTRONIC TECHNOLOGIES, LLC AND SHOULD NOT BE USED WITHOUT WRITTEN PERMISSION		CURRENT REV DESC: ADD DIMENSION BALLOONS		molex
	DIMENSION UNITS	SCALE			
▽ = 0	mm				12WAY STAK50H INTERFACE DRAWING
▽ = 0	GENERAL TOLERANCES (UNLESS SPECIFIED)				
▽ = 0	ANGULAR TOL ± °				PRODUCT CUSTOMER DRAWING
▽ = 0	4 PLACES	±			
▽ = 0	3 PLACES	±			DOCUMENT NUMBER
▽ = 0	2 PLACES	±			
▽ = 0	1 PLACE	±			DOC TYPE
▽ = 0	0 PLACES	±			
⊠ = 0	DRAFT WHERE APPLICABLE MUST REMAIN WITHIN DIMENSIONS		THIRD ANGLE PROJECTION	DRAWING	SERIES
▽ = 0			⊕	⊞	
			MATERIAL NUMBER		CUSTOMER
			SD-160026-002		GENERAL MARKET
			DOC PART		REVISION
			000		B1
			SHEET NUMBER		1 OF 3

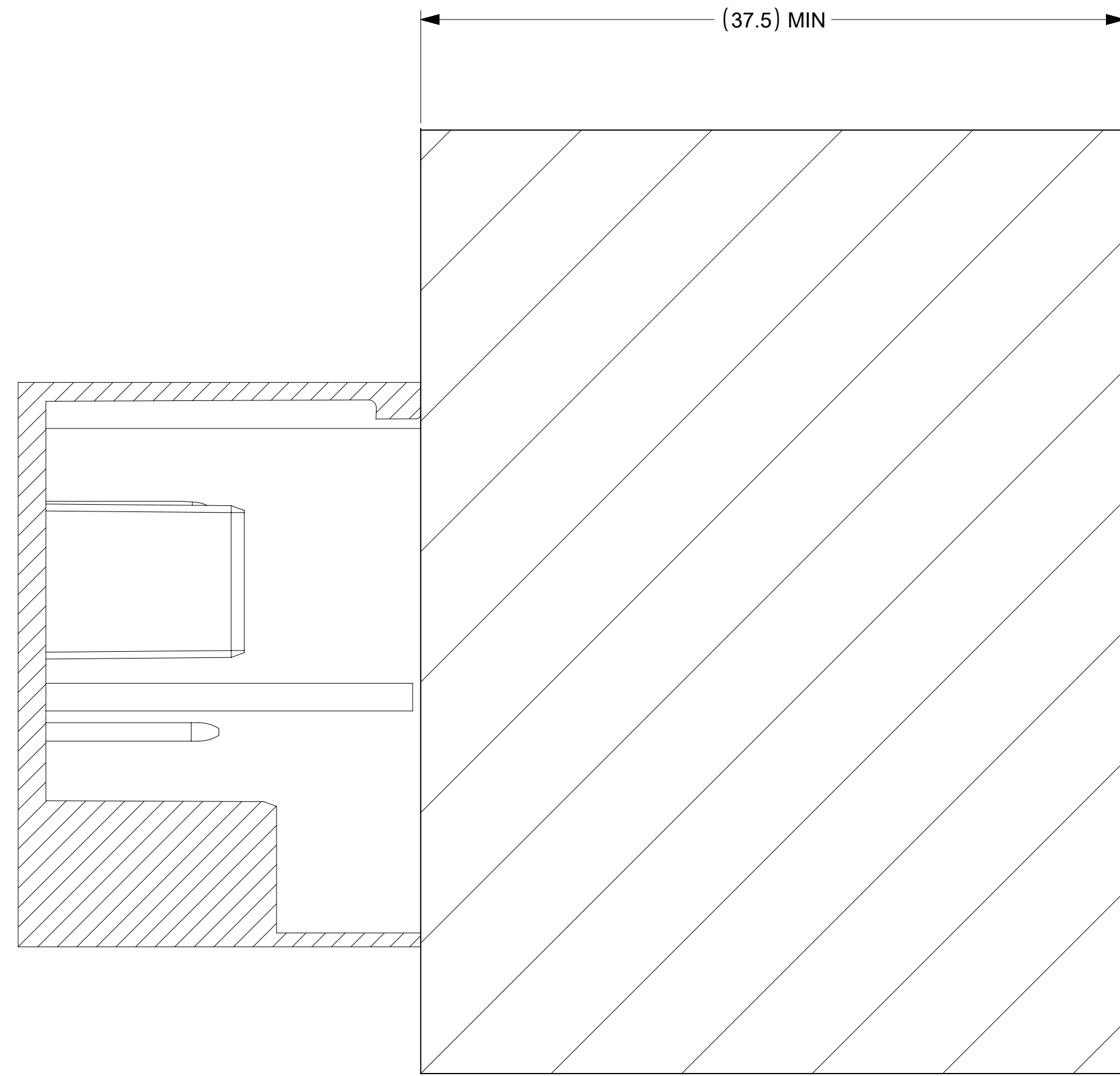


DETAIL R
SCALE 10:1

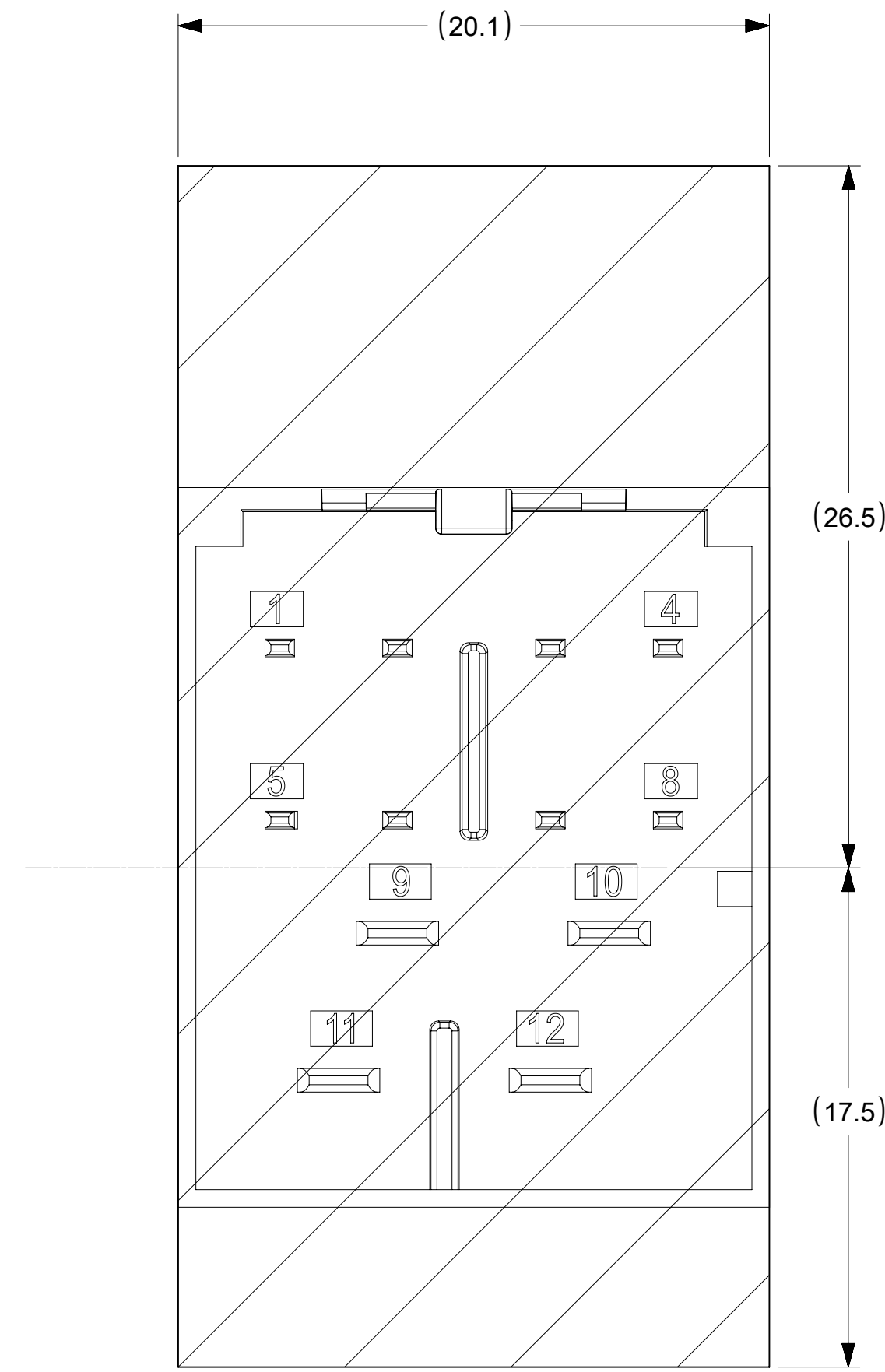
DETAIL T
SCALE 10:1

THIS DRAWING CONTAINS INFORMATION THAT IS PROPRIETARY TO MOLEX ELECTRONIC TECHNOLOGIES, LLC AND SHOULD NOT BE USED WITHOUT WRITTEN PERMISSION									
SYMBOLS		DIMENSION UNITS		SCALE		CURRENT REV DESC: ADD DIMENSION BALLOONS			
▽ = 0		mm							
▽ = 0		GENERAL TOLERANCES (UNLESS SPECIFIED)							
▽ = 0		ANGULAR TOL ±							
▽ = 0		4 PLACES				EC NO: 602204			
▽ = 0		3 PLACES				DRWN: JCONDON 2018/07/31			
▽ = 0		2 PLACES				CHK'D: JCONDON 2018/08/03			
▽ = 0		1 PLACE				APPR: MVANSLAMBROU 2018/08/03			
▽ = 0		0 PLACES				INITIAL REVISION:			
▽ = 0		DRAFT WHERE APPLICABLE MUST REMAIN WITHIN DIMENSIONS		THIRD ANGLE PROJECTION		DRAWING		SERIES	
▽ = 0				D-SIZE		160026			
DOCUMENT STATUS		P1		RELEASE DATE		2018/08/03		19:41:31	
DOCUMENT NUMBER		SD-160026-002		DOC TYPE		PSD		DOC PART	
REVISION		000		REVISED BY		B1			
MATERIAL NUMBER		GENERAL MARKET		CUSTOMER				SHEET NUMBER	
								2 OF 3	

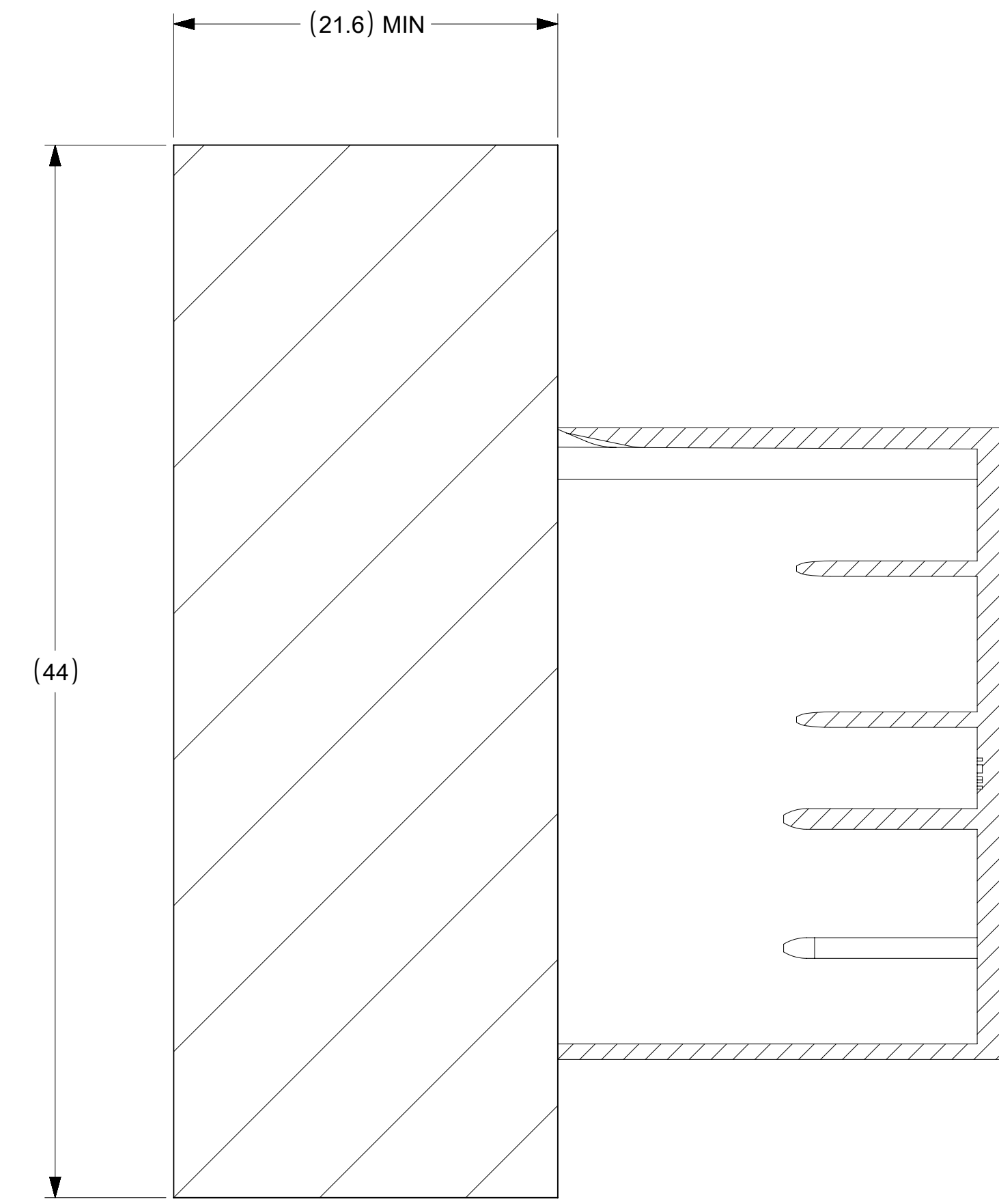
PACKAGE SPACE
FOR UNMATED
CONNECTOR



PACKAGE SPACE
FOR CONNECTOR



PACKAGE SPACE
FOR MATED
CONNECTOR
WITH COVER



SYMBOLS	THIS DRAWING CONTAINS INFORMATION THAT IS PROPRIETARY TO MOLEX ELECTRONIC TECHNOLOGIES, LLC AND SHOULD NOT BE USED WITHOUT WRITTEN PERMISSION		
	DIMENSION UNITS	SCALE	CURRENT REV DESC: ADD DIMENSION BALLOONS
▽ = 0	mm		molex 12WAY STAK50H INTERFACE DRAWING PRODUCT CUSTOMER DRAWING
▽ = 0	GENERAL TOLERANCES (UNLESS SPECIFIED)		
▽ = 0	ANGULAR TOL ±		EC NO: 602204 DRWN: JCONDON 2018/07/31 CHK'D: JCONDON 2018/08/03 APPR: MVANSLAMBROU 2018/08/03
▽ = 0	4 PLACES		INITIAL REVISION:
▽ = 0	3 PLACES		DRWN: SPEMMARAJU 2015/10/27
▽ = 0	2 PLACES		APPR: KDEKOSKI 2016/03/24
▽ = 0	1 PLACE		DOCUMENT NUMBER
▽ = 0	0 PLACES		SD-160026-002
▽ = 0	DRAFT WHERE APPLICABLE MUST REMAIN WITHIN DIMENSIONS	THIRD ANGLE PROJECTION	DOC TYPE
▽ = 0		DRAWING	PSD
		SERIES	DOC PART
		D-SIZE	000
		160026	REVISION
			B1
			MATERIAL NUMBER
			GENERAL MARKET
			CUSTOMER
			SHEET NUMBER
			3 OF 3

X-ON Electronics

Largest Supplier of Electrical and Electronic Components

Click to view similar products for [Pluggable Terminal Blocks](#) category:

Click to view products by [Phoenix Contact](#) manufacturer:

Other Similar products are found below :

[57.404.7553](#) [57.504.0053.7](#) [57.510.0053](#) [57.910.6153](#) [01.112.1453](#) [CTB932VE/6](#) [MC 1.5/ 6-ST-3.5 GY AU](#) [ET02015000J0G](#) [734-104](#) [734-302](#) [734-304](#) [8-141-P](#) [FKCT 2.5/ 3-ST KMGY](#) [860505](#) [860508](#) [860516](#) [860810](#) [861908](#) [GBPACX-12](#) [93.731.4953.0](#) [PV05-5,08-K](#) [PVP02-5,00](#) [PVP04-3,50](#) [PVS02-5,00](#) [1-1986160-3](#) [H-10](#) [1546228-5](#) [ELFH09150](#) [ELFH16150](#) [ELFP03110](#) [ELFT06250](#) [ELFT07250](#) [ELVF09400](#) [ELVP03100](#) [ELXH03100](#) [ELXP041G0](#) [ELXT046G0](#) [1700101](#) [1700410](#) [1700425](#) [1703176](#) [1703243](#) [1705229](#) [1710175](#) [1714537](#) [1717806](#) [1719600](#) [1728941](#) [1729386](#) [1734692](#)