

**PLEASE CHECK WWW.MOLEX.COM FOR LATEST PART INFORMATION**

**Part Number:** **1600260004**  
**Status:** **Active**  
**Overview:** stAK50h Connection System  
**Description:** stAK50h Hybrid Receptacle, 12 Circuits, Key 4, Gray, Bag

**Documents:**

<a href="#">3D Model</a>	<a href="#">Application Specification AS-160014-001-001 (PDF)</a>
<a href="#">Drawing (PDF)</a>	<a href="#">Packaging Specification PK-31302-266-001 (PDF)</a>
<a href="#">3D Model (PDF)</a>	<a href="#">Test Summary 1600140000-TS-000 (PDF)</a>
<a href="#">Product Specification 1600140001-000 (PDF)</a>	<a href="#">Datasheet (PDF)</a>
<a href="#">Product Specification 1600140002-PS-000 (PDF)</a>	<a href="#">RoHS Certificate of Compliance (PDF)</a>
<a href="#">Application Specification 1600140001-AS-CH-000 (PDF)</a>	

**General**

Product Family	Crimp Housings
Series	160026
Application	Automotive, Power, Signal, Wire-to-Board
Overview	<u>stAK50h Connection System</u>
Product Name	stAK50h
UPC	887191923277

**Physical**

Circuits (maximum)	12
Color - Resin	Gray
Gender	Receptacle
Glow-Wire Capable	No
Keying to Mating Part	Yes
Lock to Mating Part	Yes
Material - Resin	SPS
Net Weight	5.423/g
Number of Rows	4
Packaging Type	Bag
Panel Mount	No
Pitch - Mating Interface	2.00mm, 4.00mm, 5.20mm, 7.20mm
Pitch - Termination Interface	2.00mm, 4.00mm, 5.20mm, 7.20mm
Polarized to Mating Part	Yes
Ports	1
Stackable	No
Temperature Range - Operating	-40° to +105°C LV-214, -40° to +85°C GMW3191 June2012

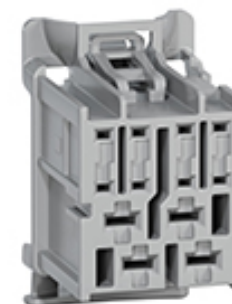
**Electrical**

Current - Maximum per Contact	12.0A, 30.0A
-------------------------------	--------------

**Material Info**

**Reference - Drawing Numbers**

Application Specification	1600140001-AS-CH-000, AS-160014-001-001
Packaging Specification	PK-31302-266-001
Product Specification	1600140001-000, 1600140002-PS-000
Sales Drawing	SD-160026-0001-000, SD-160026-002-000
Test Summary	1600140000-TS-000



*Series image - Reference only*

**EU ELV**

**Compliant**

**EU RoHS**

**Compliant**

**REACH SVHC**

Not Contained Per -  
D(2021)4569-DC (8  
July 2021)

**Halogen-Free**

**Status**

**Low-Halogen**

For more information, please visit [Contact US](#)

China ROHS

ELV

RoHS Phthalates

**China RoHS**

Green Image

Compliant

Not Contained

**Search Parts in this Series**

160026 Series

**Mates With**

2005010124 , 2005020124

**Use With**

Delphi OCS 1.20mm Terminal or JST  
MSA 1.20mm Terminal <br>TE AMP MCP  
2.80mm Terminal or Delphi CTS 2.80mm  
Terminal

## X-ON Electronics

Largest Supplier of Electrical and Electronic Components

*Click to view similar products for [Automotive Connectors](#) category:*

*Click to view products by [Molex](#) manufacturer:*

Other Similar products are found below :

[003-018-000](#) [60403001](#) [60993906-B](#) [M902-2131](#) [M902-2161](#) [72.330.1035.1](#) [73.353.4028.0](#) [F119300-B](#) [F166900](#) [F258300-B](#) [F358300-B](#)  
[F407400](#) [F444110](#) [F487000](#) [F509500B-B](#) [827153-1](#) [8N1515-32-24P](#) [9-1326729-8](#) [925474-1](#) [928905-1](#) [964562-4](#) [968782-1](#) [GT17SA-8DS-](#)  
[HU](#) [98891-1012](#) [98947-1016](#) [12004147](#) [12004475-L](#) [12010290](#) [12010309-B](#) [12015454](#) [12020219-B](#) [12020308](#) [12041318-B](#) [12052466](#)  
[12059125](#) [12064869](#) [12004327-B](#) [12010503-B](#) [12015308](#) [12015384](#) [12015909](#) [1-21030-1](#) [12041254](#) [12041318](#) [12047946-B](#) [12047957](#)  
[12047957-L](#) [12059473](#) [12066261](#) [12110546](#)