

PLEASE CHECK WWW.MOLEX.COM FOR LATEST PART INFORMATION

Part Number: [1705301020](#)
Status: **Active**
Overview: [Impact Backplane Connector and Cable Assembly System](#)
Description: Impact 85 Ohm Plus 3 Pair Right-Angle Daughtercard, Unguided, 10 Columns, 90 Circuits, Plated Through Hole Dimension 0.39mm, Lead Free

Documents:

3D Model	Application Specification AS-76060-990-001 (PDF)
3D Model (PDF)	Packaging Specification PK-70873-591-001 (PDF)
Drawing (PDF)	Symbol Footprint Data SYM-170530-1020-001 (PDF)
Product Specification PS-170540-999-001 (PDF)	RoHS Certificate of Compliance (PDF)

Agency Certification

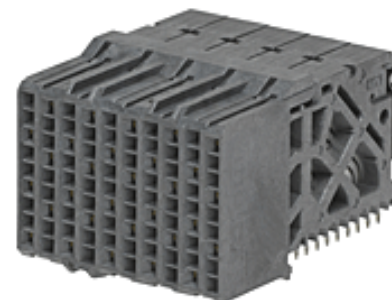
UL E29179

General

Product Family	Backplane Connectors
Series	170530
Application	Conventional, Coplanar, Daughtercard
Application Tooling Documents	TM-622018799-001
Component Type	PCB Receptacle
Overview	Impact Backplane Connector and Cable Assembly System
Product Name	Impact
UPC	884982613416

Physical

Circuits (Loaded)	90
Circuits (maximum)	90
Color - Resin	Gray
Durability (mating cycles max)	200
First Mate / Last Break	No
Flammability	94V-0
Guide to Mating Part	No
Keying to Mating Part	None
Material - Metal	High Performance Alloy (HPA)
Material - Plating Mating	Gold
Material - Plating Termination	Tin
Material - Resin	High Temperature Thermoplastic
Net Weight	9.185/g
Number of Columns	10
Number of Pairs	3
Number of Rows	9
Orientation	Right Angle
PC Tail Length	1.20mm
PCB Locator	No
PCB Retention	None
PCB Thickness - Recommended	1.00mm
Packaging Type	Tray
Pitch - Mating Interface	1.35mm, 1.90mm
Pitch - Termination Interface	1.35mm, 1.90mm
Plating min - Mating	0.762µm
Polarized to PCB	No
Stackable	No
Surface Mount Compatible (SMC)	No
Temperature Range - Operating	-55° to +85°C
Termination Interface: Style	Through Hole - Compliant Pin



Series image - Reference only

EU ELV

Not Relevant

EU RoHS

Compliant

REACH SVHC

Not Contained Per -
D(2021)4569-DC (8
July 2021)

**Halogen-Free
Status**

Low-Halogen

For more information, please visit [Contact US](#)

China ROHS

ELV

RoHS Phthalates

Green Image

Not Relevant

Not Contained

Search Parts in this Series

[170530](#) Series

Mates With

[170525](#) Impact 85 Ohm Plus Vertical Header

Electrical

Current - Maximum per Contact	0.75A
Data Rate	25.0 Gbps
Impedance	85Ω
Shield Type	N/A
Shielded	No
Voltage - Maximum	30V AC (RMS)/DC

Solder Process Data

Lead-free Process Capability	N/A
------------------------------	-----

Material Info**Reference - Drawing Numbers**

Application Specification	AS-76060-990-001
Electrical Model Document	EE-170530-025-001, EE-170530-040-001
Packaging Specification	PK-70873-591-001
Product Specification	PS-170540-999-001
S-Parameter Model	SP-170530-0001-001, SP-170530-0001_40G-001
Sales Drawing	SD-170530-0001-001
Symbol/Footprint Data	SYM-170530-1020-001

This document was generated on 02/08/2022

PLEASE CHECK WWW.MOLEX.COM FOR LATEST PART INFORMATION

X-ON Electronics

Largest Supplier of Electrical and Electronic Components

Click to view similar products for [High Speed/Modular Connectors](#) category:

Click to view products by [Molex](#) manufacturer:

Other Similar products are found below :

[650827-1](#) [74040-1346](#) [1410191-1](#) [1410337-1](#) [1410368-3](#) [1410367-3](#) [1410971-4](#) [1467833-1](#) [2000877-1](#) [2000878-1](#) [2041314-1](#) [2065387-1](#)
[2187307-1](#) [163P](#) [1934290-1](#) [2000875-1](#) [2065799-1](#) [2065917-1](#) [2102736-2](#) [FSR-40](#) [2169868-2](#) [22354-8](#) [437-5040-000](#) [039-0246-000](#)
[0740618502](#) [0761601016](#) [73774-1000](#) [030-2415-003/100 PK](#) [030-7380-004](#) [030-2494-001](#) [532939-1](#) [5532901-3](#) [3-1469268-7](#) [UMK-SE](#)
[11,25-1](#) [74748-102LF](#) [10041743-101LF](#) [10066670-100002LF](#) [1-533915-1](#) [249-4515-000](#) [7-1469373-3](#) [DL2-2J/S](#) [2000713-8](#) [2000713-7](#)
[10124313-101LF](#) [1410189-2](#) [3011-21](#) [EBTF-4-10-2.0-S-RA-1](#) [430305-001](#) [4395800100](#) [8140115](#)