

PLEASE CHECK WWW.MOLEX.COM FOR LATEST PART INFORMATION

Part Number: [1720650310](#)
Status: **Active**
Overview: [Mega-Fit Power Connectors](#)
Description: Mega-Fit Slim Vertical Header, Through Hole, 5.70mm Pitch, Dual Row, 10 Circuits, 0.76µm Gold (Au) Plating, Glow-Wire Capable, Black

Documents:

3D Model	Application Specification AS-76823-100-001 (PDF)
Drawing (PDF)	Packaging Specification 768291100-000 (PDF)
3D Model (PDF)	Test Summary TS-76823-100-001 (PDF)
Product Specification PS-76823-100-001 (PDF)	Datasheet (PDF)
Application Specification 768232000-AS-000 (PDF)	RoHS Certificate of Compliance (PDF)

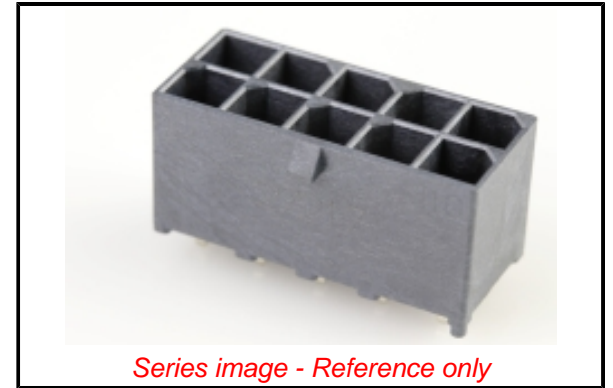
General

Product Family	PCB Headers
Series	172065
Application	Power, Wire-to-Board
Overview	Mega-Fit Power Connectors
Product Name	Mega-Fit
UPC	889056897310

Physical

Breakaway	No
Circuits (Loaded)	10
Circuits (maximum)	10
Color - Resin	Black
Durability (mating cycles max)	200
First Mate / Last Break	No
Glow-Wire Capable	Yes
Keying to Mating Part	Yes
Lock to Mating Part	Yes
Mated Height	16.78mm
Material - Metal	High Conductivity Copper
Material - Plating Mating	Gold
Material - Plating Termination	Matte Tin
Material - Resin	Liquid Crystal Polymer
Net Weight	5.574/g
Number of Rows	2
Orientation	Vertical
PC Tail Length	3.73mm
PCB Locator	Yes
PCB Retention	Yes
PCB Thickness - Recommended	1.58mm
Packaging Type	Tray
Pitch - Mating Interface	5.70mm
Pitch - Termination Interface	5.70mm
Plating min - Mating	0.762µm
Plating min - Termination	2.540µm
Polarized to Mating Part	Yes
Polarized to PCB	Yes
Shrouded	Yes
Surface Mount Compatible (SMC)	Yes
Temperature Range - Operating	-40° to +120°C
Termination Interface: Style	Through Hole
Unmated Height	14.80mm

Electrical



Series image - Reference only

EU ELV

Not Relevant

EU RoHS

Compliant

REACH SVHC

Not Contained Per -
D(2021)4569-DC (8
July 2021)

Halogen-Free

Status

Low-Halogen

For more information, please visit [Contact US](#)

China ROHS

ELV

RoHS Phthalates

China RoHS

Green Image

Not Relevant

Not Contained

Search Parts in this Series

[172065](#) Series

Mates With

Mega-Fit Receptacle Housing [171692](#)
, [170001](#) . Mega-Fit Overmolded Cable
Assembly [245136](#)

Current - Maximum per Contact
Voltage - Maximum

23.5A
600V AC (RMS)/DC

Material Info

Reference - Drawing Numbers

Application Specification	768232000-AS-000, AS-76823-100-001
Packaging Specification	768291100-000
Product Specification	PS-76823-100-001
Sales Drawing	768290002-000
Test Summary	TS-76823-100-001

This document was generated on 09/07/2021

PLEASE CHECK WWW.MOLEX.COM FOR LATEST PART INFORMATION

X-ON Electronics

Largest Supplier of Electrical and Electronic Components

Click to view similar products for [Headers & Wire Housings](#) category:

Click to view products by [Molex](#) manufacturer:

Other Similar products are found below :

[892-18-020-10-001101](#) [58102-G61-06LF](#) [582553-1](#) [0009485154](#) [009176003701906](#) [0050291907](#) [LY20-4P-DT1-P1E-BR](#) [02.125.8002.8](#)
[609-3404](#) [61062-3](#) [622-0430](#) [622-3653LF](#) [63453-116](#) [636-1030](#) [636-1427](#) [636-3427](#) [636-4007](#) [641938-9](#) [641991-4](#) [644827-2](#) [65817-010LF](#)
[65817-015LF](#) [65863-015LF](#) [66207-023LF](#) [67095-007LF](#) [67601157](#) [68648-049](#) [70.362.1628.0](#) [70-4210](#) [70-4226B](#) [70-4853B](#) [707-5020](#) [707-5028](#) [71.350.2428.0](#) [71918-208LF](#) [71961-016LF](#) [733-134](#) [733-162](#) [754199-000](#) [760-3052](#) [787-8014-00](#) [79531-3000](#) [FCN-360C032-B](#) [FCN-367T-T012/H](#) [FCN-723D010/2](#) [80.063.4001.1](#) [800-90-001-10-001000](#) [800-90-010-10-002000](#) [801-43-002-10-013000](#) [801-43-006-10-002000](#)