

PLEASE CHECK WWW.MOLEX.COM FOR LATEST PART INFORMATION

Part Number: [1727620110](#)
Status: **Active**
Overview: [Mini-Fit Family Power Connectors](#)
Description: Mini-Fit TPA2 Plug Housing, 4.20mm Pitch, Dual Row, UL 94V-2, Glow-Wire Capable, 10 Circuits

Documents:

Drawing (PDF)	Packaging Specification PK-172762-0000-000 (PDF)
3D Model (PDF)	Test Summary 1727180002-TS-000 (PDF)
3D Model	Datasheet (PDF)
Product Specification PS-172718-0000-001 (PDF)	RoHS Certificate of Compliance (PDF)
Application Specification AS-172718-0000-001 (PDF)	

Agency Certification

UL E29179

General

Product Family	Crimp Housings
Series	172762
Application	Power, Wire-to-Wire
Comments	See product specification for current derating information.
Overview	Mini-Fit Family Power Connectors
Product Name	Mini-Fit TPA2
UPC	889056262057

Physical

Circuits (maximum)	10
Color - Resin	Black
Flammability	94V-2
Gender	Plug
Glow-Wire Capable	Yes
Lock to Mating Part	Yes
Material - Resin	Nylon
Net Weight	3.050/g
Number of Rows	2
Packaging Type	Bag
Panel Mount	No
Pitch - Mating Interface	4.20mm
Pitch - Termination Interface	4.20mm
Polarized to Mating Part	Yes
Stackable	No
Temperature Range - Operating	-40° to +105°C

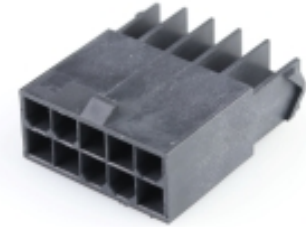
Solder Process Data

Lead-freeProcess Capability N/A

Material Info

Reference - Drawing Numbers

Application Specification	AS-172718-0000-001
Packaging Specification	PK-172762-0000-000
Product Specification	PS-172718-0000-001
Sales Drawing	SD-172762-0000-000
Test Summary	1727180002-TS-000



Series image - Reference only

EU ELV

Not Relevant

EU RoHS

Compliant

REACH SVHC

Not Contained Per -
D(2021)4569-DC (8
July 2021)

Halogen-Free

Status

Not Low-Halogen

For more information, please visit [Contact US](#)

China ROHS

ELV

RoHS Phthalates

China RoHS

Green Image

Not Relevant

Not Contained

Search Parts in this Series

[172762](#) Series

Mates With

Mini-Fit TPA2 Receptacle Housing [172708](#) .
Mini-Fit Jr. Receptacle Housing [5557](#)

Use With

Mini-Fit TPA2/Sigma Male Terminal [172765](#)
, [203070](#) . Mini-Fit TPA2 Retainer [172709](#)

This document was generated on 08/27/2021

PLEASE CHECK WWW.MOLEX.COM FOR LATEST PART INFORMATION

X-ON Electronics

Largest Supplier of Electrical and Electronic Components

Click to view similar products for [Headers & Wire Housings](#) category:

Click to view products by [Molex](#) manufacturer:

Other Similar products are found below :

[892-18-020-10-001101](#) [58102-G61-06LF](#) [582553-1](#) [0009485154](#) [009176003701906](#) [0050291907](#) [LY20-4P-DT1-P1E-BR](#) [02.125.8002.8](#)
[609-3404](#) [61062-3](#) [622-0430](#) [622-3653LF](#) [63453-116](#) [636-1030](#) [636-1427](#) [636-3427](#) [636-4007](#) [641938-9](#) [641991-4](#) [644827-2](#) [65817-010LF](#)
[65817-015LF](#) [65863-015LF](#) [66207-023LF](#) [67095-007LF](#) [67601157](#) [68648-049](#) [70.362.1628.0](#) [70-4210](#) [70-4226B](#) [70-4853B](#) [707-5020](#) [707-](#)
[5028](#) [71.350.2428.0](#) [71918-208LF](#) [71961-016LF](#) [733-134](#) [733-162](#) [754199-000](#) [760-3052](#) [787-8014-00](#) [79531-3000](#) [FCN-360C032-B](#) [FCN-](#)
[367T-T012/H](#) [FCN-723D010/2](#) [80.063.4001.1](#) [800-90-001-10-001000](#) [800-90-010-10-002000](#) [801-43-002-10-013000](#) [801-43-006-10-002000](#)