

**PLEASE CHECK WWW.MOLEX.COM FOR LATEST PART INFORMATION**

**Part Number:** [1731120231](#)  
**Status:** **Active**  
**Overview:** [FCT D-Sub Connectors](#)  
**Description:** FCT High Power Contact, Female, Right-Angle, PCB Through Hole, 0.20µm Gold Plating, 20.0A, 3.15mm PCB Drilling Diameter

**Documents:**

[Drawing \(PDF\)](#)  
[Brochure \(PDF\)](#)

[RoHS Certificate of Compliance \(PDF\)](#)

**General**

Product Family	D-Sub Products
Series	<a href="#">173112</a>
Contact Type	High Power
Overview	<a href="#">FCT D-Sub Connectors</a>
Product Category	Contacts
Product Name	FCT Products
Type	Mixed Layout
UPC	889056565660

**Physical**

Durability (mating cycles max)	200
Gender	Female
Material - Contact	Copper Alloy
Material - Retaining Clip	Copper Alloy
Net Weight	2.300/g
Orientation	Right-Angle
Packaging Type	Bag
Plating - Contact	Gold over Nickel
Plating min - Mating	0.200µm
Plating min - Termination	5.000µm
Temperature Range - Operating	-55° to +155°C
Termination Style	Through Hole

**Electrical**

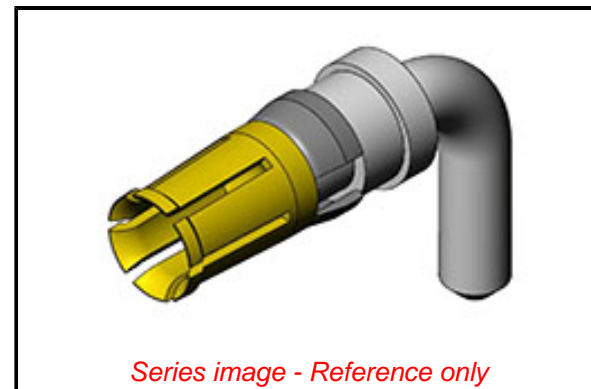
Current - Maximum per Contact	20.0A
-------------------------------	-------

**Material Info**

Engineering Number	FMP008S105
--------------------	------------

**Reference - Drawing Numbers**

Sales Drawing	1731120080-000
---------------	----------------



**EU ELV**

**Not Relevant**

**EU RoHS**

**Compliant with Exemption 6(c)**

**REACH SVHC**

Contained Per -  
D(2021)4569-DC (8  
July 2021)

Lead

**Halogen-Free**

**Status**

**Not Reviewed**

For more information, please visit [Contact US](#)

China ROHS

ELV

RoHS Phthalates

**China RoHS**

50 Image

Not Relevant

Not Contained

**Search Parts in this Series**

[173112 Series](#)

**Use With**

FCT Mixed Layout Connectors

## X-ON Electronics

Largest Supplier of Electrical and Electronic Components

*Click to view similar products for [D-Sub Contacts](#) category:*

*Click to view products by [Molex](#) manufacturer:*

Other Similar products are found below :

[030-1952-000](#) [030-1952-030](#) [030-1953-000](#) [030-1953-030](#) [030-1954-000](#) [030-1955-000](#) [030-1955-000](#) [031-5130-000](#) [0318998101FR022](#)  
[047703-000](#) [053744-0007](#) [053744-0098](#) [053744-0099](#) [053745-0105](#) [053745-0111](#) [09560008157](#) [09560008165](#) [09560008175](#) [09560008177](#)  
[09560008265](#) [09560008277](#) [09670003576](#) [09670003672](#) [09670007167](#) [09670007168](#) [09670007176](#) [09670007267](#) [09670007268](#)  
[09670007276](#) [09670007277](#) [09670007278](#) [09670007576](#) [09670008157](#) [09670008158](#) [09670008167](#) [09670008168](#) [09670008176](#)  
[09670008177](#) [09670008178](#) [09670008187](#) [09670008257](#) [09670008258](#) [09670008267](#) [09670008276](#) [09670008277](#) [09670008278](#)  
[09670008287](#) [09670008676](#) [09691812550](#) [09691815140](#)