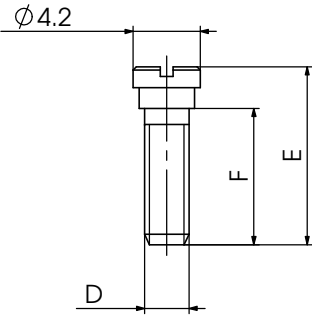
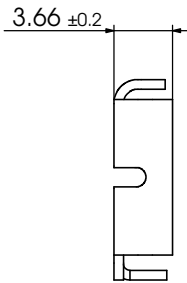
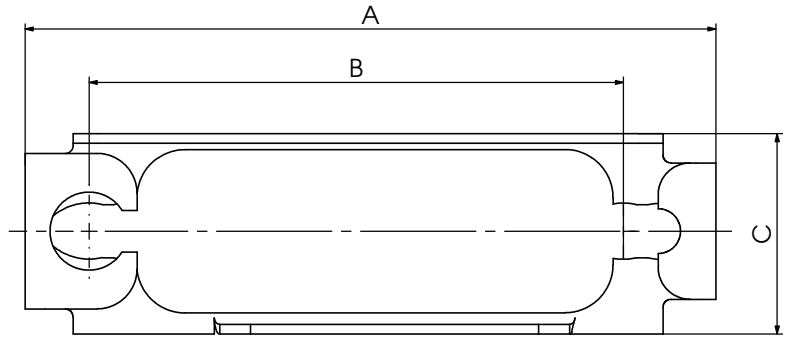


Shell size	Appliance mounting Part No.	Hood mounting Part No.	A ±0,3	B ±0,15	C ±0,2	D
1	F-GV-1 F-GV-1M3	F-GV-1H F-GV-1HM3	35,1	25	12,5	4-40UNC M3
2	F-GV-2 F-GV-2M3	F-GV-2H F-GV-2HM3	43,1	33,3	12,5	4-40UNC M3
3	F-GV-3 F-GV-3M3	F-GV-3H F-GV-3HM3	56,94	47,04	12,5	4-40UNC M3
4	F-GV-4 F-GV-4M3	F-GV-4H F-GV-4HM3	73,3	63,5	12,5	4-40UNC M3
5	F-GV-5 F-GV-5M3	F-GV-5H F-GV-5HM3	72	61,1	14,7	4-40UNC M3

	E	F
for mounting on the hood	12,4	10,0
for mounting on the appliance	10,9	8,5



PACKING UNIT:

F-GV-1 to 5 and F-GV-1M3 to 5M3 with 2 screws, 2 spring washers and 2 nuts
 F-GV-1H to 5H and F-GV-1HM3 to 5HM3 with 2 screws

COMMENT:
 ALL RIGHTS ARE RESERVED BY US FOR THIS DRAWING. WITHOUT OUR PRIOR CONSENT,
 THIS DRAWING IS NOT TO BE REPRODUCED, COPIED, STORED IN A RETRIEVABLE SYSTEM,
 AND IT ALSO MAY NOT BE IMPROPERLY USED BY THE RECEIVER, OR A THIRD PARTY.

				Measurement without tolerance acc. to ISO 2768-m SCALE 2:1 TITLE Slide Lock
				NAME / DATE DRAWN sschref 12-05-2009 CHECKED Friedrich.Flossmann 14-05-2009
				 DWG.NO. F-GV-1-5 REV. 1
1	REV.	DATE	CH.-NO.	ORIGINAL: DIN A3-DRAWING AS A FILE REPLACEMENT FOR: F-GV-1-5_D PAGES 1

X-ON Electronics

Largest Supplier of Electrical and Electronic Components

Click to view similar products for [D-Sub Tools & Hardware](#) category:

Click to view products by [Molex](#) manufacturer:

Other Similar products are found below :

[173112-0667](#) [173112-0759](#) [173112-0967](#) [173112-0291](#) [173112-0456](#) [000-01-09-132](#) [000-01-21-132](#) [000-01-31-162](#) [572019-00105-70](#)
[000-01-37-162](#) [621-250-113-115](#) [D20418-2R](#) [D20418-J3F](#) [70521CLF](#) [70524BLF](#) [70527BLF](#) [70527CLF](#) [F1042-1PLAH](#) [750643-1](#) [780-010-06G4-00C](#) [780-518-50SG6-WS](#) [863004ATLF](#) [86552009](#) [86553115TLF](#) [86553117TLF](#) [86553156LF](#) [FSGK1/5](#) [980-8554-000](#) [980-8555-000](#)
[980-8557-000](#) [980-8558-000](#) [1230032-1](#) [1-5021101-2](#) [15-000050](#) [1589283-4](#) [160-000-005R031](#) [16-000230](#) [160-020-109R000](#) [160-025-004R031](#) [160-015-003R031](#) [160-020-209R000](#) [160X10909X](#) [164C03939A](#) [177-505-A-2-2](#) [177-505-C-4-4](#) [179-013-1H](#) [1-966830-8](#) [21018-621028-3](#) [213622-5](#)