

PLEASE CHECK WWW.MOLEX.COM FOR LATEST PART INFORMATION

Part Number: [1731120670](#)
Status: **Active**
Overview: [FCT D-Sub Connectors](#)
Description: FCT High Power Contact, Male, Right-Angle, PCB Through Hole, 0.20µm Gold Plating, 40.0A, 4.05mm PCB Drilling Diameter

Documents:

[Brochure \(PDF\)](#) [RoHS Certificate of Compliance \(PDF\)](#)

General

| | |
|------------------|--------------------------------------|
| Product Family | D-Sub Products |
| Series | 173112 |
| Contact Type | High Power |
| Overview | FCT D-Sub Connectors |
| Product Category | Contacts |
| Product Name | FCT Products |
| Type | Mixed Layout |
| UPC | 191128757270 |

Physical

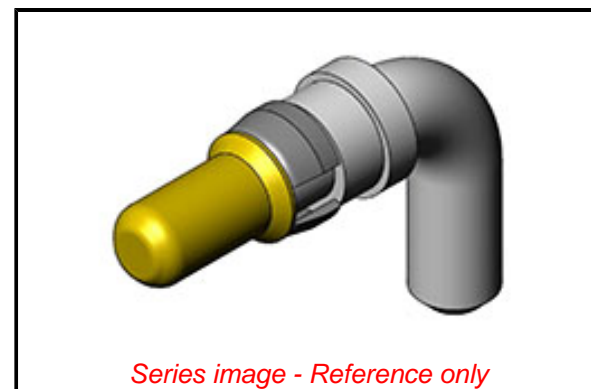
| | |
|--------------------------------|------------------|
| Durability (mating cycles max) | 200 |
| Gender | Male |
| Material - Contact | Copper Alloy |
| Material - Retaining Clip | Copper Alloy |
| Net Weight | 2.800/g |
| Orientation | Right-Angle |
| Packaging Type | Bag |
| Plating - Contact | Gold over Nickel |
| Plating min - Mating | 0.200µm |
| Plating min - Termination | 5.000µm |
| Temperature Range - Operating | -55° to +155°C |
| Termination Style | Through Hole |

Electrical

| | |
|-------------------------------|-------|
| Current - Maximum per Contact | 40.0A |
|-------------------------------|-------|

Material Info

| | |
|--------------------|------------|
| Engineering Number | FMP009P105 |
|--------------------|------------|



EU ELV

Not Relevant

EU RoHS

Compliant with Exemption 6(c)

REACH SVHC

Contained Per - D(2021)4569-DC (8 July 2021)

Lead

Halogen-Free

Status

Not Reviewed

For more information, please visit [Contact US](#)

China ROHS

ELV

RoHS Phthalates

China RoHS

50 Image

Not Relevant

Not Contained

Search Parts in this Series

[173112 Series](#)

Use With

FCT Mixed Layout Connectors

PLEASE CHECK WWW.MOLEX.COM FOR LATEST PART INFORMATION

X-ON Electronics

Largest Supplier of Electrical and Electronic Components

Click to view similar products for [D-Sub Contacts](#) category:

Click to view products by [Molex](#) manufacturer:

Other Similar products are found below :

[D02-22-26S-10000](#) [8656352067LF](#) [131A15029X](#) [132A11019X](#) [132J22039X](#) [132A11029X](#) [132A11049X](#) [132A12059X](#) [1757912-1](#) [188582-000](#) [162A11889X](#) [1757913-1](#) [212558-1](#) [030-1955-000](#) [053744-0098](#) [053744-0099](#) [053745-0105](#) [053745-0111](#) [601098N003](#) [D-610-10CS2962](#) [86303057NLF](#) [131A11019X](#) [162A11819X](#) [40-9854MP](#) [1-208778-5](#) [FC120N2](#) [MC7526D/AA](#) [MC8122D/AA](#) [FC4010D-15](#) [FC4006D](#) [121A05329A](#) [164C16669X](#) [86566620064LF](#) [131A13019X](#) [DLS3XS5AK40X](#) [09692825723](#) [VS-BU-KX-50-RG58](#) [030-1954-000](#) [L17DM53744207](#) [L17RRD1M11400](#) [030-1952-000](#) [1655496](#) [030-1953-000](#) [030-1953-030](#) [132C11039X](#) [132J15019X](#) [132C15019X](#) [132A10039X](#) [131A10029X](#) [8638PSC2006LF](#)