

**PLEASE CHECK WWW.MOLEX.COM FOR LATEST PART INFORMATION**

**Part Number:** **1805800005**  
**Status:** **Active**  
**Overview:** LED Array Holders, Dual-Ended Wire Trap  
**Description:** LED Array Holder for 16.00 by 19.00mm COB, Circular Version, Gold (Au) Plating, One-Piece Design with Three-finger Attachment for LEDiL Angela/Angelina Reflectors

**Documents:**

<a href="#">3D Model</a>	<a href="#">Application Specification AS-180328-001-001 (PDF)</a>
<a href="#">Drawing (PDF)</a>	<a href="#">Packaging Specification PK-180336-104-001 (PDF)</a>
<a href="#">Product Specification PS-180580-004-001 (PDF)</a>	<a href="#">RoHS Certificate of Compliance (PDF)</a>
<a href="#">Product Specification TS-180155-001-001 (PDF)</a>	

**Agency Certification**

UL E345583

**General**

Product Family	Solid State Lighting
Series	<u>180580</u>
Array Type	Nichia
Beam Angle	N/A
Height	4.10mm
Overview	<u>LED Array Holders, Dual-Ended Wire Trap</u>
Product Name	Wire Trap Holder
Type	LED COB Array Holder
UPC	887191461090

**Physical**

Base Type	N/A
Color Rendering Index (CRI)	N/A
Correlated Color Temp (CCT)	N/A
Depth	0.90mm
Flammability	94V-0
Lamp Type	N/A
Material - Metal	Copper Alloy
Mounting Style	Screws
Net Weight	8.572/g
Packaging Type	Tray

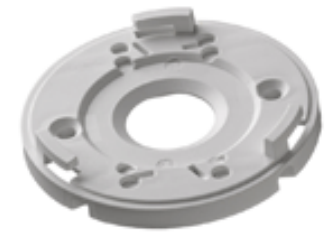
**Electrical**

Lamp Wattage - Maximum	N/A
Lumens	N/A
Voltage (Fixture) - Maximum	600V DC
Wiring Style	Poke In Wire Traps

**Material Info**

**Reference - Drawing Numbers**

Application Specification	AS-180328-001-001
Packaging Specification	PK-180336-104-001
Product Specification	PS-180580-004-001, TS-180155-001-001
Sales Drawing	SD-180580-004



*Series image - Reference only*

**EU ELV**

**Not Relevant**

**EU RoHS**

**Compliant**

**REACH SVHC**

Not Contained Per  
-ED/01/2018 (15  
January 2018)

**Halogen-Free  
Status**

**Not Low-Halogen**

**Need more information on product  
environmental compliance?**

Email [productcompliance@molex.com](mailto:productcompliance@molex.com)  
Please visit the [Contact Us](#) section for any  
non-product compliance questions.

China ROHS	Green Image
ELV	Not Relevant
RoHS Phthalates	Not Contained

**Search Parts in this Series**

180580 Series

**Use With**

19.00mm by 16.00mm COB

## X-ON Electronics

Largest Supplier of Electrical and Electronic Components

*Click to view similar products for [LED Lighting Mounting Accessories](#) category:*

*Click to view products by [Molex](#) manufacturer:*

Other Similar products are found below :

[094100M5](#) [10148](#) [10363](#) [10425](#) [104328-0210](#) [10455](#) [10462](#) [10463](#) [10465](#) [10469](#) [10566](#) [10731](#) [10732](#) [10733](#) [10734](#) [10736](#) [10737](#) [10743](#)  
[10745](#) [10750](#) [10960](#) [10962](#) [10966](#) [10968](#) [1210010210](#) [1-2154857-2](#) [1-2154857-3](#) [1-2213678-6](#) [1-2213699-1](#) [1-2213699-2](#) [1-2213699-3](#) [1-](#)  
[2213699-4](#) [1-2213748-1](#) [1-2316510-1](#) [1-2316510-2](#) [1-2316510-3](#) [1-2316510-4](#) [1-2316511-1](#) [1-2316511-2](#) [1-2316511-3](#) [1-2316511-4](#) [1-](#)  
[2323859-1](#) [1-2323859-2](#) [1-2323859-3](#) [1-2325807-2](#) [1-2325807-3](#) [1-2325811-2](#) [1-2325811-3](#) [1-2343404-1](#) [1301850558](#)