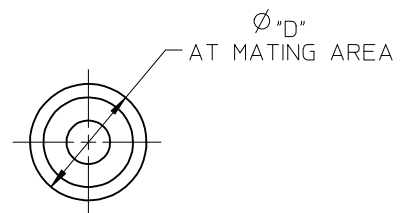
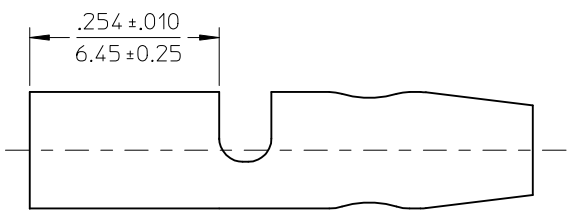
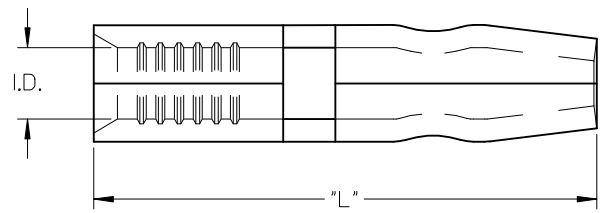


| MATERIAL NUMBER | ENG. NUMBER | WIRE RANGE AWG | "I.D." MIN | "D" ±.002/0.05 | "L" ±.010/0.25 |
|-----------------|-------------|-------------------|------------|-------------------|-------------------|
| 190330001 | A-159 | 22-18 | .056/1.42 | .182/4.62 | .734/18.64 |
| 190330003 | A-169 | 22-18 | .056/1.42 | .158/4.01 | .680/17.27 |
| 190330005 | B-179 | 16-14 | .084/2.13 | .182/4.62 | .734/18.64 |
| 190330007 | B-189 | 16-14 | .084/2.13 | .158/4.01 | .680/17.27 |

(E)



SALES DRAWING

- NOTE(S):
1. MATERIAL: COPPER .032/0.81 THK
 2. FINISH: ELECTRO-TIN
 3. PARTS ARE ROHS COMPLIANT.

| | | | | | | | | | | |
|---|-------------------------------|--|-------------|---|--------------------|--------------|---|------------------------|--|--|
| REMOVE TAPE SPECS. EEC NO: IPG2015-0955 DRWNG: GRO JASO1 2014/11/26 CHKD: JMAGNE IL 2014/11/26 APPR: JMAGNE IL 2014/12/18 | QUALITY SYMBOLS ▽=0 ▽=0 | GENERAL TOLERANCES (UNLESS SPECIFIED) | | DIMENSION STYLE IN/MM | | SCALE | DESIGN UNITS INCH | THIRD ANGLE PROJECTION | | |
| | | | mm | INCH | DRAWN BY | DATE | TITLE | | | |
| | | 4 PLACES | ±--- | ±--- | RMARSHAL | 92/09/29 | KRIMPTITE MALE BULLET SNAP PLUG .180 AND .156 | | | |
| | | 3 PLACES | ±--- | ±--- | CHECKED BY | DATE | | | | |
| 2 PLACES | ±--- | ±--- | RDEROSS | 92/09/29 | MOLEX INCORPORATED | | | | | |
| 1 PLACE | ±--- | ±--- | APPROVED BY | DATE | | | | | | |
| ANGULAR ±---° | | DRAFT WHERE APPLICABLE MUST REMAIN WITHIN DIMENSIONS | | MATERIAL NO. | | DOCUMENT NO. | | SHEET NO. | | |
| | | | | SEE CHART | | SD-19033-001 | | 1 OF 1 | | |
| | | | | THIS DRAWING CONTAINS INFORMATION THAT IS PROPRIETARY TO MOLEX INCORPORATED AND SHOULD NOT BE USED WITHOUT WRITTEN PERMISSION | | | | | | |

X-ON Electronics

Largest Supplier of Electrical and Electronic Components

Click to view similar products for [Terminals](#) category:

Click to view products by [Molex](#) manufacturer:

Other Similar products are found below :

[0-0031894-0](#) [0-0035108-0](#) [0-0036150-0](#) [00051128587317](#) [00051128588178](#) [00051128588642](#) [00-054007-01074-6](#) [00-054007-49560-4](#) [00-054007-70206-1](#) [00-054007-70209-2](#) [00-054007-70210-8](#) [00-054007-70217-7](#) [00-054007-70225-2](#) [00-054007-70226-9](#) [00-054007-70227-6](#) [00-054007-70228-3](#) [00-054007-70231-3](#) [00-054007-70241-2](#) [00-054007-70242-9](#) [00-054007-70244-3](#) [00-054007-70246-7](#) [00-054007-70248-1](#) [00-054007-70256-6](#) [00-054007-70263-4](#) [00-054007-70288-7](#) [00-054007-70290-0](#) [00-054007-70300-6](#) [00-054007-70301-3](#) [00-054007-70304-4](#) [00-054007-70316-7](#) [0-0130008-0](#) [0-0130171-0](#) [0-0130532-0](#) [0-0131330-0](#) [0-0160298-0](#) [0-0165034-0](#) [0-0165536-1](#) [0-0320562-0](#) [0-0321045-0](#) [00581P0075](#) [010996B](#) [01-1103-1-0212](#) [01-1103-1-0219](#) [01-2010-1-0212](#) [01-2065-1-0216](#) [0124300000](#) [0124400000](#) [0124700000](#) [0124800000](#) [01-2900-1-04410](#)