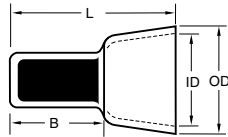


Molex Nylon Closed-End Connectors feature 2-piece construction. A translucent nylon-molded insulation is adhered to the metal connector insert. The connector's insert is annealed, Tin-plated, seamless, pure electrolytic, tough pitch Copper. Individual design and performance requirements dictate the use of Copper inserts. These connectors are all rated for a maximum of 600V.

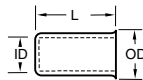
Nylon-Insulated, Closed-End Connectors							
Wire Range AWG (mm <sup>2</sup> )	Loose Piece Order No.	Mylar Tape Order No.	Outside Diameter OD	Overall Length L	Barrel Length B	Inside Diameter ID	Circular Mil Area
14-22 (2.00-0.35)	19160-0012	19160-0070	7.80 (.310)	19.81 (.780)	10.92 (.430)	6.60 (.260)	600-5180
12-22 (3.30-0.35)	19160-0009	19160-0071	8.90 (.350)	21.84 (.860)	9.40 (.370)	7.10 (.280)	600-8230
10-16 (5.00-1.30)	19160-0002	19160-0083	11.20 (.440)	22.86 (.900)	11.68 (.460)	9.60 (.380)	2200-13,100
8 (8.50)	19160-0024	19160-0028	14.20 (.560)	27.70 (1.090)	10.90 (.430)	12.70 (.500)	13,100-20,800



MATERIAL: COPPER

**CONNECTOR INSERTS**

Molex Connector Inserts are the same annealed, Tin-plated, seamless pieces used in the nylon-insulated, closed-end connectors above. These inserts are used in applications where insulation is not essential.

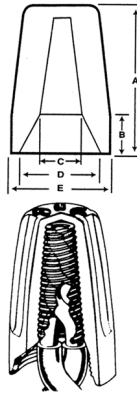


MATERIAL: COPPER

Connector Inserts					
Wire Range AWG (mm <sup>2</sup> )	Order No.	Outside Diameter OD	Overall Length L	Inside Diameter ID	Circular Mil Area
14-22 (2.00-0.35)	19160-0025	3.61 (.142)	7.92 (.314)	2.29 (.090)	600-5180
12-22 (3.30-0.35)	19160-0022	4.22 (.166)	8.05 (.317)	2.64 (.104)	600-8230
10-16 (5.00-1.30)	19160-0014	5.56 (.219)	7.47 (.294)	3.84 (.151)	2200-13,100
8 (8.50)	19160-0029	7.67 (.302)	11.05 (.435)	5.59 (.220)	13,100-20,800

**TWIST LOCK WIRE CONNECTORS**

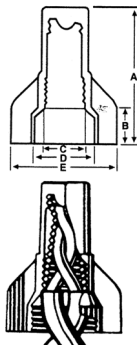
A cone shaped, plated Steel spring conforms to the inside contour of the insulating shell, which supports the spring as the conductor is driven up into the cone. Requiring no pretwisting, the wires are automatically twisted together for a secure connection and maximum contact. Fixed spring wire connectors may be used to make branch circuit or fixture wire connections on numerous combinations of solid and/or stranded wire.



Twist Lock Wire Connectors								
Order No.	Copper Wire Only			Dimension				
	Wire Range AWG	Minimum	Maximum	A	B	C	D	E
19160-0039	16-22 (1.30-0.35)	1 #22 w 1 #20	2 #16	37/64	11/64	1/8	1/4	21/64
19160-0040	16-22 (1.30-0.35)	3 #22	3 #16	45/64	11/64	3/16	5/16	25/64
19160-0041	14-22 (2.00-0.35)	3 #20	4 #16 w/ 1 #20	27/32	21/64	13/64	11/32	7/16
19160-0042	10-18 (5.00-0.80)	1 #14 w/ 1 #18	4 #14	15/16	17/64	15/64	7/16	35/64
19160-0043	10-18 (5.00-0.80)	2 #14	2 #10 w/ 2 #12	1-1/16	17/64	21/64	17/32	21/32

**WING LOCK WIRE CONNECTORS**

A square wire, coiled spring expands freely within the tough plastic shell and can accommodate a wide range of wire combinations. The angled edges of the spring attach to the conductor as the connector is twisted on for an easily secured joint. The spring applies even pressure over the entire contact area and provides a low resistance connection and mechanical strength against pull and vibration.



Wing Lock Wire Connectors									
Order No.	Copper Wire Only			Dimension					
	Wire Range AWG	Min.	Max.	A	B	C	D	E	F
19160-0044	10-22 (5.00-0.35)	2 #18	3 #12	1-1/32	5/16	7/32	1/4	23/32	N/A
19160-0045	10-18 (5.00-0.80)	2 #14	5 #12	1-1/4	5/16	9/32	7/16	29/32	N/A
19160-0046	6-22 (13.50-0.35)	3 #22	4 #12 w/ 2 #18	47/64	9/16	5/16	21/64	1-5/32	5/16
19160-0047	6-14 (13.50-2.00)	1 #10 w/ 1 #12	1 #6 w/ 2 #8STR	1-1/2	7/16	3/8	3/4	1-1/4	N/A

Order #19160-0046 only.

Molex connectors must withstand extreme dielectric voltage tests to determine performance. All connectors are UL listed and CSA certified as Pressure-Type wire connectors for 600V max., building wire; 1000V max., signs or fixtures and comply with Federal Specification W-S-610d. Temperature rating 105°C (221°F) max.

## X-ON Electronics

Largest Supplier of Electrical and Electronic Components

*Click to view similar products for [Terminals](#) category:*

*Click to view products by [Molex](#) manufacturer:*

Other Similar products are found below :

[00-054007-01074-6](#) [00-054007-70206-1](#) [00-054007-70210-8](#) [00-054007-70217-7](#) [00-054007-70226-9](#) [00-054007-70228-3](#) [00-054007-70248-1](#) [00-054007-70256-6](#) [00-054007-70301-3](#) [00-054007-70316-7](#) [0-0320562-0](#) [00-054007-49560-4](#) [00-054007-70209-2](#) [00-054007-70225-2](#) [00-054007-70227-6](#) [00-054007-70231-3](#) [00-054007-70241-2](#) [00-054007-70242-9](#) [00-054007-70244-3](#) [00-054007-70246-7](#) [00-054007-70263-4](#) [00-054007-70288-7](#) [00-054007-70290-0](#) [00-054007-70300-6](#) [00-054007-70304-4](#) [01-2065-1-0216](#) [01-2900-1-04412](#) [00581P0075](#) [600TS-10](#) [60205-1](#) [604200-1](#) [605601-1](#) [60598-1-CUT-TAPE](#) [61314-6-C](#) [61810-3](#) [61-S](#) [62149-1](#) [626-0194](#) [62-NBM-A](#) [62-SN](#) [62-SP](#) [640179-1](#) [M55155/059I03](#) [M55155/079C01](#) [M55155/099H02](#) [M55155/109H01](#) [M55155/109H02](#) [M55155/12XH05](#) [M55155/16XH02](#) [M55155/29-5S](#)