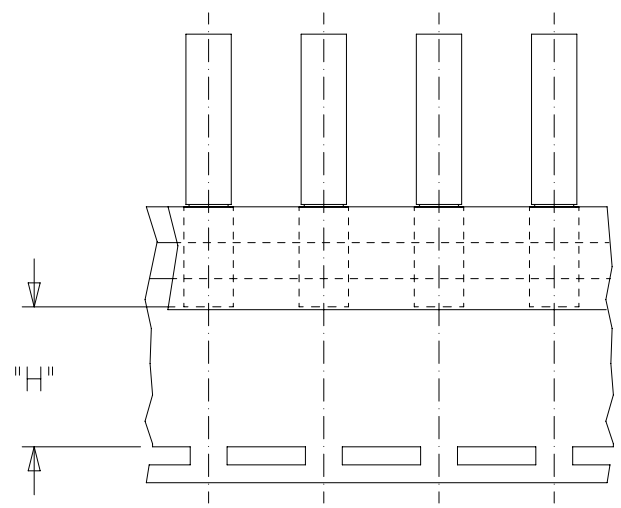
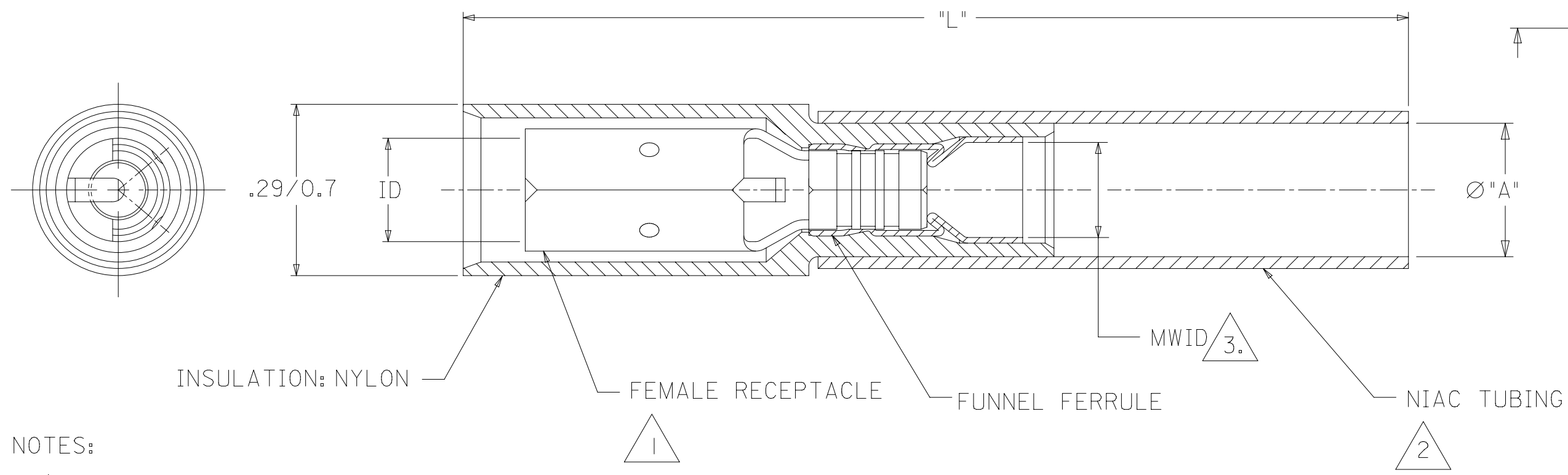


MATERIAL NUMBER	ENGINEERING NUMBER	MATERIAL NUMBER ON TAPE	ENGINEERING NUMBER ON TAPE	AWG	COLOR CODE	MWID	"ID" MIN	"L" MAX (D2)	"A" MIN	H (D2) .01/.3
191640052	SBRA-8156N	191641151	SBRA-8156NT	22-18	RED	.13/3.3	.156/3.96	1.62/41.2	.235/5.97	.455/11.56
191640053	SBRA-8180N	191641152	SBRA-8180NT	22-18	RED	.13/3.3	.180/4.57	1.63/41.4	.235/5.97	.455/11.56
191640054	SBRB-8156N	191640414	SBRB-8156NT	16-14	BLUE	.15/3.81	.156/3.96	1.63/41.4	.230/5.84	.455/11.56
191640055	SBRB-8180N	191641147	SBRB-8180NT	16-14	BLUE	.15/3.81	.180/4.57	1.63/41.4	.230/5.84	.455/11.56



PARTS ON TAPE



INSULATION: NYLON

FEMALE RECEPTACLE

FUNNEL FERRULE

NIAC TUBING

NOTES:

- 1. TERMINAL
MATERIAL: COPPER
PLATING: TIN
- 2. INSULATION
MATERIAL: HEAT SHRINKABLE
NIAC TUBING W/ HOT-MELT
ADHESIVE INNER LINER
- 3. MWID= MAXIMUM WIRE INSULATION DIAMETER

4. PARTS ARE ROHS COMPLIANT.

THIS DRAWING CONTAINS INFORMATION THAT IS PROPRIETARY TO MOLEX ELECTRONIC TECHNOLOGIES, LLC AND SHOULD NOT BE USED WITHOUT WRITTEN PERMISSION

EC NO: 123493 DRWN: GROJAS01 CHKD: APPR: JMACNEIL	2017/10/16	2017/10/19	GENERAL TOLERANCES (UNLESS SPECIFIED)	DIMENSION UNITS	SCALE	
				HYBRID	NTS	
				DRWN BY	DATE	
				GROJAS01	2015/06/03	
			ANGULAR TOL ± 0.5 °	CHK'D BY	DATE	<p>FULLY INSULATED AVIKRIMP PERMA-SEAL BULLET RECEPT .156/3.96-.180/4.57 DIA.</p>
		4 PLACES ±		JMACNEIL	2015/06/03	
		3 PLACES ±				
		2 PLACES ± 0.25				
		1 PLACE ± 0.5		APPR BY	DATE	PRODUCT CUSTOMER DRAWING
		0 PLACES ±		JMACNEIL	2015/06/16	SERIES
			DRAFT WHERE APPLICABLE MUST REMAIN WITHIN DIMENSIONS	DRAWING SIZE	THIRD ANGLE PROJECTION	19164
				B		MATERIAL NUMBER
						GENERAL MARKET
						DOCUMENT NUMBER
						SD-19164-035
						DOC TYPE
						PSD
						DOC PART
						001
						SHEET NUMBER
						1 OF 1

RELEASE STATUS	P1	RELEASE DATE	19.10.2017	16:24:32
----------------	----	--------------	------------	----------

X-ON Electronics

Largest Supplier of Electrical and Electronic Components

Click to view similar products for [Terminals](#) category:

Click to view products by [Molex](#) manufacturer:

Other Similar products are found below :

[HT-13-10](#) [71M-250-32-NB](#) [01-2065-1-0216](#) [00581P0075](#) [M10-10RX](#) [M10BCK](#) [60205-1](#) [604200-1](#) [60598-1-CUT-TAPE](#) [60617-1-C](#) [60873-1](#) [M14-516R/SK](#) [M14-6RSX](#) [M18-10FLX](#) [M18-8FBX](#) [M18-8R/LX](#) [M18BCK](#) [61314-6-C](#) [61-S](#) [61-SN-A](#) [62-NBM-A](#) [63-S](#) [640179-1](#) [640917-2-CUT-TAPE](#) [6501550002](#) [66107-2-C](#) [696683-1](#) [696834-1](#) [696861-1](#) [696931-1](#) [696999-1](#) [M8-516RK](#) [M86700006](#) [MA250DMFMX-A](#) [701-2007](#) [701-2307](#) [701-7761-03](#) [70F-110-32-PB](#) [718-N-A](#) [71M-187-20-NBL](#) [71M-250-32-NBL](#) [72F-187-20-NBL](#) [72M-250-32-NBL](#) [7310](#) [73F-250-32](#) [73F-250-32-NBL](#) [73F-250-32-NL](#) [F14-10C](#) [F-1M](#) [751-250](#)