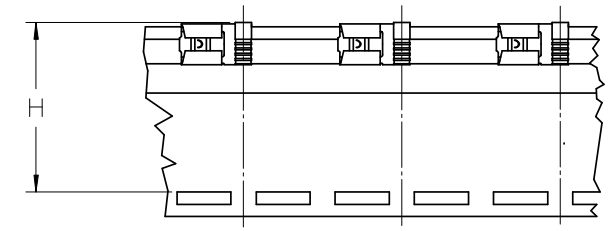
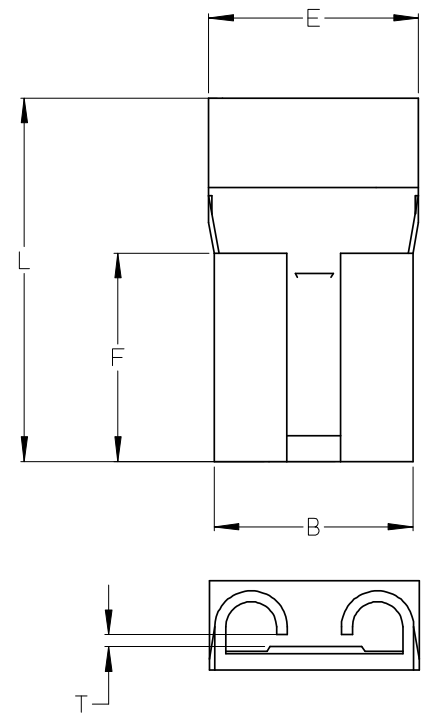
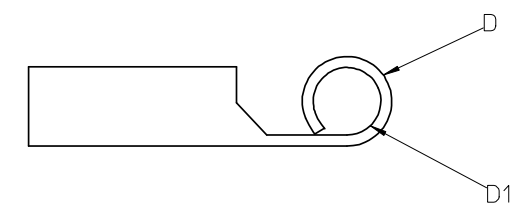


MATERIAL NUMBER LOOSE PIECE	MATERIAL NUMBER TAPE MOUNTED	WIRE RANGE AWG	T MAX	B MAX	F MAX	L MAX	E MAX	D1 MIN	D MAX	H NOMINAL
192030375	192030525	16-14	.036/1.90	.302/7.66	.331/8.40	.587/14.92	.311/7.90	.083/2.10	.134/3.40	1.255/31.88
192030380	-	12-10	.036/1.90	.302/7.66	.331/8.40	.619/15.72	.378/9.60	.149/3.78	.193/4.90	-

ⓓ



ⓓ PARTS ON TAPE



- NOTES:
1. MATERIAL: STEEL. 016/0.40 THICK REF
 2. PLATING: NICKEL
 3. WIRE RANGE: SEE CHART
 4. PART IS ROHS COMPLIANT.
 5. AMBIENT OPERATING TEMPERATURE UP TO 900 °F (483 °C).
 - ⓓ 6. PART IS ROHS COMPLIANT.

ADD TAPE PART EC NO: WNA 2008-0119 DRWN: ETHRODAHL 2008/03/14 CHKD: MACNEIL 2008/03/27 APPR: MACNEIL 2008/04/21 REV D	QUALITY SYMBOLS	GENERAL TOLERANCES (UNLESS SPECIFIED)		DIMENSION STYLE	SCALE	DESIGN UNITS	THIRD ANGLE PROJECTION	
	▼=0 ▽=0	mm	INCH	IN/MM	---	INCH		
		4 PLACES	±---	±---	DRAWN BY	DATE	TITLE	
		3 PLACES	±---	±---	ASAYDEH	05/12/05	FLAG QD TERMINAL, STEEL, KRIMPTITE, 900 DEG F (483 DEG C)	
		2 PLACES	±---	±---	CHECKED BY	DATE		
	1 PLACE	±---	±---	RDEROSS	05/12/05	MOLEX INCORPORATED		
	ANGULAR ±---°			APPROVED BY	DATE			
	DRAFT WHERE APPLICABLE MUST REMAIN WITHIN DIMENSIONS			RDEROSS	05/12/05			
		SIZE B	SEE CHART	MATERIAL NO.	DOCUMENT NO.	SHEET NO.		
						1 OF 1		
				THIS DRAWING CONTAINS INFORMATION THAT IS PROPRIETARY TO MOLEX INCORPORATED AND SHOULD NOT BE USED WITHOUT WRITTEN PERMISSION				

X-ON Electronics

Largest Supplier of Electrical and Electronic Components

Click to view similar products for [Terminals](#) category:

Click to view products by [Molex](#) manufacturer:

Other Similar products are found below :

[00-054007-01074-6](#) [00-054007-70206-1](#) [00-054007-70210-8](#) [00-054007-70217-7](#) [00-054007-70226-9](#) [00-054007-70228-3](#) [00-054007-70248-1](#) [00-054007-70256-6](#) [00-054007-70301-3](#) [00-054007-70316-7](#) [0-0320562-0](#) [00-054007-49560-4](#) [00-054007-70209-2](#) [00-054007-70225-2](#) [00-054007-70227-6](#) [00-054007-70231-3](#) [00-054007-70241-2](#) [00-054007-70242-9](#) [00-054007-70244-3](#) [00-054007-70246-7](#) [00-054007-70263-4](#) [00-054007-70288-7](#) [00-054007-70290-0](#) [00-054007-70300-6](#) [00-054007-70304-4](#) [01-2065-1-0216](#) [01-2900-1-04412](#) [00581P0075](#) [600TS-10](#) [60205-1](#) [604200-1](#) [605601-1](#) [60598-1-CUT-TAPE](#) [61314-6-C](#) [61810-3](#) [61-S](#) [61-SN](#) [626-0194](#) [62-NBM-A](#) [62-SN](#) [62-SP](#) [640179-1](#) [M55155/059I03](#) [M55155/079C01](#) [M55155/099H02](#) [M55155/109H01](#) [M55155/109H02](#) [M55155/12XH05](#) [M55155/16XH02](#) [M55155/29-5S](#)