

ITEM	MOLEX P/N	DESCRIPTION	QTY	UOM
A,B	436450600	MicroFit 3.0 Receptacle Sgl Row 6Ckt	2	PC
C	430300001	MicroFit 3.0 F Crp Term Chn Tin 20-24	12	PC
D	--	RESIN TPE NAT SANTOPRENE	A/R	KG
E	--	MOLD PART INNER CAP	4	PC
F	--	MASTER BATCH BLACK COLOR	A/R	KG

FROM	TO	CABLE DESCRIPTION	COLOR
A1	B1	6CX20AWG UNSHD BK UL2464	RED
A2	B2		YELLOW
A3	B3		BLUE
A4	B4		GREEN
A5	B5		WHITE
A6	B6		BLACK

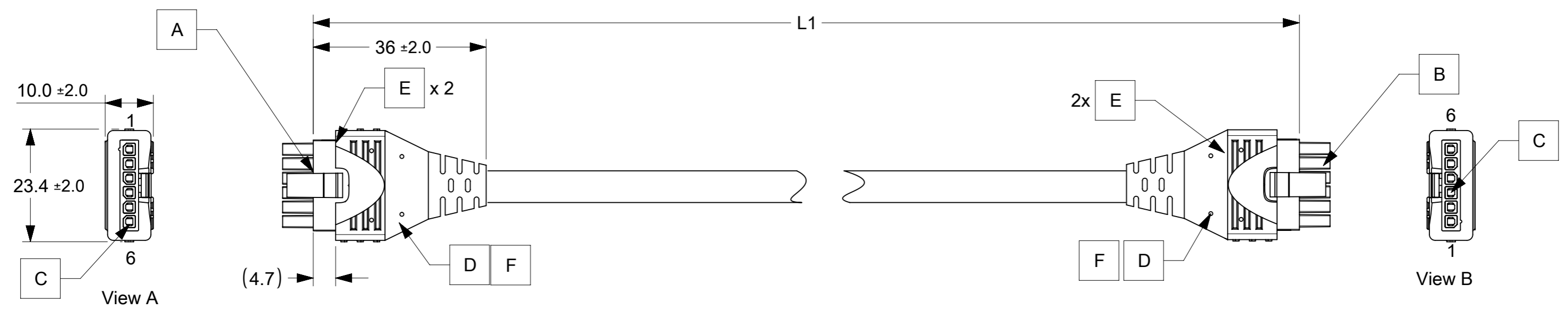


TABLE		
PART NUMBER	DESCRIPTION	L1
2147700605	6CKT OVERMOLDED MICROFIT CABLE 500MM	500±10
2147700610	6CKT OVERMOLDED MICROFIT CABLE 1M	1000±20
2147700620	6CKT OVERMOLDED MICROFIT CABLE 2M	2000±25
2147700630	6CKT OVERMOLDED MICROFIT CABLE 3M	3000±30

NOTES:

- MOLDING MATERIAL:
 - INNERCAP: PA66 NYLON RESIN.
 - OVERMOLD: SANTOPRENE TPE RESIN & MASTER BATCH BLACK.
- ELECTRICAL PERFORMANCE:
 - VOLTAGE RATING: 300V AC.
 - THIS PRODUCT MUST PASS 100% CONTINUITY TEST PER MOLEX ES-36586-004.
 - DIELECTRONIC STRENGTH: 500V DC/0.01 SEC.
 - INSULATION RESISTANCE: 20M OHMS
- CONNECTOR VIEWS ARE SHOWN FROM MATING SIDE.
- MECHANICAL PERFORMANCE:
 - CABLE HARNESS SHOULD WITHSTAND AN AXIAL FORCE OF 5KGF FOR ONE MINUTE BETWEEN OVERMOLD AND CONNECTOR WITHOUT PHYSICAL DAMAGE.
 - OVERMOLD SIDE CAN PASS THE BENDING TEST IN 100 CYCLES AT EACH OF 2 PLANES, PER EIA364-41 CONDITION I.

FUNCTIONAL SYMBOLS	THIS DRAWING CONTAINS INFORMATION THAT IS PROPRIETARY TO MOLEX ELECTRONIC TECHNOLOGIES, LLC AND SHOULD NOT BE USED WITHOUT WRITTEN PERMISSION		CURRENT REV DESC:		molex
$\nabla_A = 0$ $\nabla_E = 0$ $\nabla_F = 0$	DIMENSION UNITS	SCALE	EC NO: 662516 DRWN: SBS04 2021/04/30 CHK'D: MNARAYAN01 2021/05/10 APPR: MNARAYAN01 2021/05/10		
DIVISIONAL SYMBOLS	GENERAL TOLERANCES (UNLESS SPECIFIED)		INITIAL REVISION:		PRODUCT CUSTOMER DRAWING
	4 PLACES	±	DRWN: SBS04 2021/04/23 APPR: MNARAYAN01 2021/05/10		DOCUMENT NUMBER
	3 PLACES	±			2147700605
	2 PLACES	±			DOC TYPE
	1 PLACE	±			PSD
	0 PLACES	±			DOC PART
	DRAFT WHERE APPLICABLE MUST REMAIN WITHIN DIMENSIONS		THIRD ANGLE PROJECTION	DRAWING	REVISION
				A3-SIZE	B
			SERIES	MATERIAL NUMBER	CUSTOMER
			214770	SEE TABLE	GENERAL MARKET
					SHEET NUMBER
					1 OF 1

X-ON Electronics

Largest Supplier of Electrical and Electronic Components

Click to view similar products for [Rectangular Cable Assemblies](#) category:

Click to view products by [Molex](#) manufacturer:

Other Similar products are found below :

[MC320E-N-23](#) [A08KR08KR26E203B](#) [G125FC10668L0-0300L](#) [G125FC10668L0-0150L](#) [G125-FC11068L0-0150L](#) [G125-FC11068L0-0300L](#)
[A06XAF06XAF22K254B](#) [A16KR16KR26E203B](#) [A12KR12KR26E305A](#) [A12KR12KR26E305B](#) [A12ZR12ZR28H203A](#)
[A10SR10SR30K254A](#) [A09SR09SR30K305A](#) [A14KR14KR26E254B](#) [A09ZR09ZR28H305A](#) [A09ZR09ZR28H305B](#) [A13ZR13ZR28H203A](#)
[A13KR13KR26E305B](#) [A11ZR11ZR28H254A](#) [A11ZR11ZR28H254B](#) [A11SR11SR30K254A](#) [A12SUR12SUR32W254A](#)
[A10ZR10ZR28H305B](#) [A12ZR12ZR28H254A](#) [A15KR15KR26E305A](#) [A15KR15KR26E305B](#) [A11SR11SR30K305A](#) [A13ZR13ZR28H254A](#)
[A12ZR12ZR28H305A](#) [A12ZR12ZR28H305B](#) [A20XAF20XAF22K51B](#) [A13ZR13ZR28H305A](#) [A20XAF20XAF22K152B](#)
[A20XAF20XAF22K203B](#) [A20XAF20XAF22K254B](#) [A20XAF20XAF22K305B](#) [A16XSR16XSR36R254B](#) [A02SR02SR30K203B](#)
[A06KR06KR26E102A](#) [A02ZR02ZR28H203B](#) [A03SUR03SUR32W102A](#) [A04ZR04ZR28H102A](#) [A04ZR04ZR28H102B](#)
[A03SR03SR30K203B](#) [A02ZR02ZR28H254B](#) [A04SR04SR30K102B](#) [A02SUR02SUR32W254A](#) [A03XAF03XAF22K51A](#)
[A05SUR05SUR32W51A](#) [A03XAF03XAF22K102A](#)