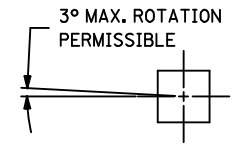
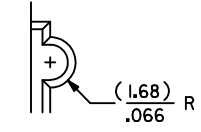


CKT. SIZE	PART NUMBER	ENG. NUMBER SDA-70204-	DIM. "A"		DIM. "B"		DIM. "C"	
			MM	IN.	MM	IN.	MM	IN.
08	25-02-4008	0835	7,62	.300	17,78	.700	20,32	.800
10	25-02-4010	0836	10,16	.400	20,32	.800	22,86	.900
12	25-02-4012	0837	12,70	.500	22,86	.900	25,40	1.000
14	25-02-4014	0838	15,24	.600	25,40	1.000	27,94	1.100
16	25-02-4016	0839	17,78	.700	27,94	1.100	30,48	1.200
18	25-02-4018	0840	20,32	.800	30,48	1.200	33,02	1.300
20	25-02-4020	0841	22,86	.900	33,02	1.300	35,56	1.400
22	25-02-4022	0842	25,40	1.000	35,56	1.400	38,10	1.500
24	25-02-4024	0843	27,94	1.100	38,10	1.500	40,64	1.600
26	25-02-4026	0844	30,48	1.200	40,64	1.600	43,10	1.700
28	25-02-4028	0845	33,02	1.300	43,10	1.700	45,72	1.800
30	25-02-4030	0846	35,56	1.400	45,72	1.800	48,26	1.900
32	25-02-4032	0847	38,10	1.500	48,26	1.900	50,80	2.000
34	25-02-4034	0848	40,64	1.600	50,80	2.000	53,34	2.100
36	25-02-4036	0849	43,10	1.700	53,34	2.100	55,88	2.200
38	25-02-4038	0850	45,72	1.800	55,88	2.200	58,42	2.300
40	25-02-4040	0851	48,26	1.900	58,42	2.300	60,96	2.400

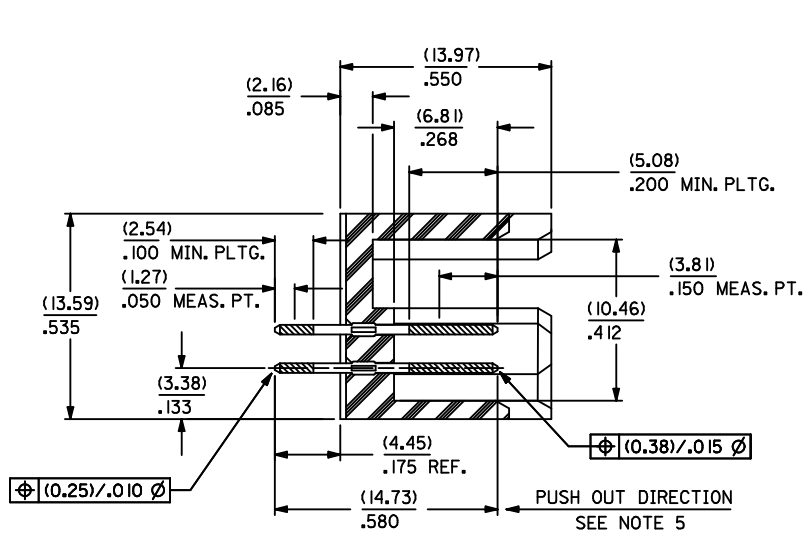
CKT. SIZE	PART NUMBER	ENG. NUMBER SDA-70204-	DIM. "A"		DIM. "B"		DIM. "C"	
			MM	IN.	MM	IN.	MM	IN.
42	25-02-4042	0852	50,80	2.000	60,96	2.400	63,50	2.500
44	25-02-4044	0853	53,34	2.100	63,50	2.500	66,04	2.600
46	25-02-4046	0854	55,88	2.200	66,04	2.600	68,58	2.700
48	25-02-4048	0855	58,42	2.300	68,58	2.700	71,12	2.800
50	25-02-4050	0856	60,96	2.400	71,12	2.800	73,66	2.900
52	25-02-4052	0857	63,50	2.500	73,66	2.900	76,20	3.000
54	25-02-4054	0858	66,04	2.600	76,20	3.000	78,74	3.100
56	25-02-4056	0859	68,58	2.700	78,74	3.100	81,28	3.200
58	25-02-4058	0860	71,12	2.800	81,28	3.200	83,82	3.300
60	25-02-4060	0861	73,66	2.900	83,82	3.300	86,36	3.400
62	25-02-4062	0862	76,20	3.000	86,36	3.400	88,90	3.500
64	25-02-4064	0863	78,74	3.100	88,90	3.500	91,44	3.600
66	25-02-4066	0864	81,28	3.200	91,44	3.600	93,98	3.700
68	25-02-4068	0865	83,82	3.300	93,98	3.700	96,52	3.800
70	25-02-4070	0866	86,36	3.400	96,52	3.800	99,06	3.900
72	25-02-4072	0867	88,90	3.500	99,06	3.900	101,60	4.000



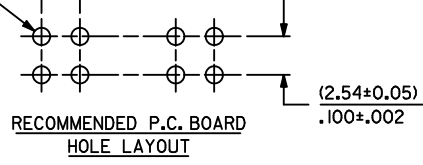
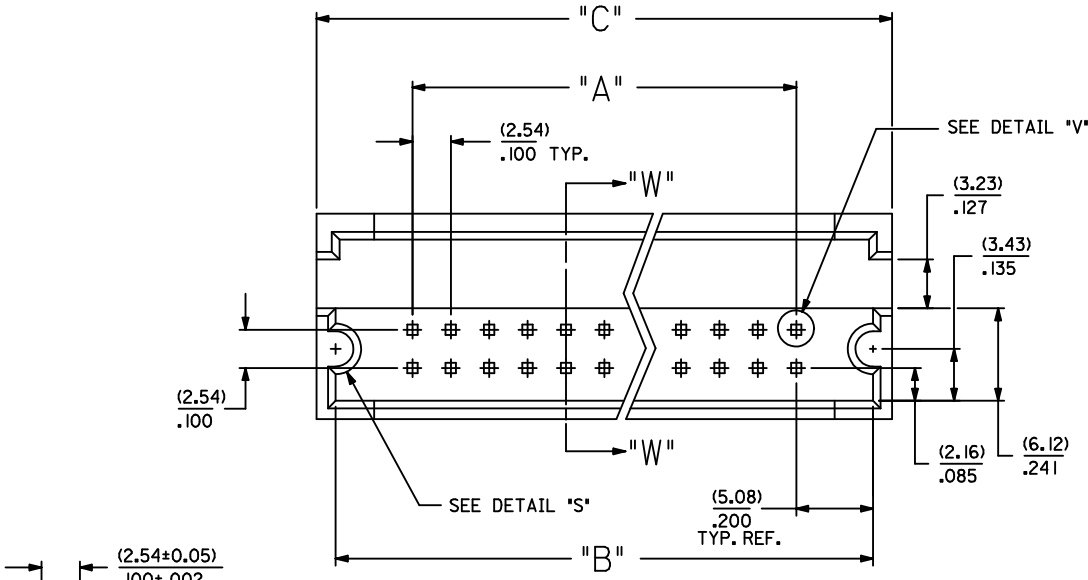
DETAIL "V"
SCALE = 20:1



DETAIL "S"



SECTION W-W



- NOTES:
1. WAFER MATERIAL: GLASS FILLED NYLON; COLOR: BLACK
 2. PIN MATERIAL: COPPER ALLOY
 3. PIN PLATING:
TIP: 30 MICROINCHES MINIMUM GOLD IN SELECTED AREA
TAIL: 75 MICROINCHES MINIMUM TIN IN SELECTED AREA
OVER NICKEL UNDERPLATE OVER-ALL
 4. PINS MUST MEET SOLDERABILITY SPEC. NO. 152
 5. PIN PUSH-OUT FORCE (1.81 KG)/4 LBS MINIMUM
 6. REFER TO P.S. NO. 70204
 7. STANDARD PACKAGING PER: PK-70873-0070

CORRECT DIMENSION EC NO: UCP2011-3892 DRWINSHI BARRA 2011/06/27 CHKD:JORGAN APPR:SMILLER 2011/07/07	QUALITY SYMBOLS	GENERAL TOLERANCES (UNLESS SPECIFIED)	DIMENSION STYLE	SCALE	DESIGN UNITS	THIRD ANGLE PROJECTION
	▽=0	mm INCH	MM/IN	4:1	INCH	
	▽=0	4 PLACES ± --- ± ---	DRAWN BY DATE			
	▽=0	3 PLACES ± --- ± .010	JAS 1986/05/20			
		2 PLACES ± 0.25 ± ---	CHECKED BY DATE			
		1 PLACE ± --- ± ---	EIK 1986/05/20			
		ANGULAR ± 1/2°	APPROVED BY DATE			
			WAZ 1986/05/20			
			MATERIAL NO.	DOCUMENT NO.		
			SEE TABLE	SDA-70204-0833-0896		
			SIZE			
			C			
			THIS DRAWING CONTAINS INFORMATION THAT IS PROPRIETARY TO MOLEX INCORPORATED AND SHOULD NOT BE USED WITHOUT WRITTEN PERMISSION			

SHROUDED HEADER DUAL ROW
W/PCB SLOTS & GUIDE EARS
.100 GRID, .025 SQ PIN

MOLEX MOLEX INCORPORATED
SHEET NO. 1 OF 1

X-ON Electronics

Largest Supplier of Electrical and Electronic Components

Click to view similar products for [Headers & Wire Housings](#) category:

Click to view products by [Molex](#) manufacturer:

Other Similar products are found below :

[892-18-020-10-001101](#) [58102-G61-06LF](#) [582553-1](#) [0009485154](#) [009176003701906](#) [0050291907](#) [LY20-4P-DT1-P1E-BR](#) [02.125.8002.8](#)
[609-3404](#) [61062-3](#) [622-0430](#) [622-3653LF](#) [63453-116](#) [636-1030](#) [636-1427](#) [636-3427](#) [636-4007](#) [641938-9](#) [641991-4](#) [644827-2](#) [65817-010LF](#)
[65817-015LF](#) [65863-015LF](#) [66207-023LF](#) [67095-007LF](#) [67601157](#) [68648-049](#) [70.362.1628.0](#) [70-4210](#) [70-4226B](#) [70-4853B](#) [707-5020](#) [707-](#)
[5028](#) [71.350.2428.0](#) [71918-208LF](#) [71961-016LF](#) [733-134](#) [733-162](#) [754199-000](#) [760-3052](#) [787-8014-00](#) [79531-3000](#) [FCN-360C032-B](#) [FCN-](#)
[367T-T012/H](#) [FCN-723D010/2](#) [80.063.4001.1](#) [800-90-001-10-001000](#) [800-90-010-10-002000](#) [801-43-002-10-013000](#) [801-43-006-10-002000](#)