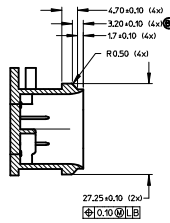
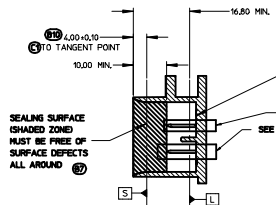
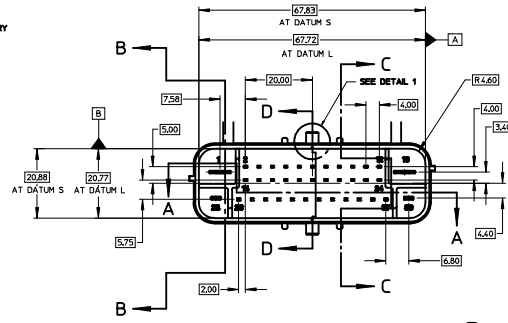
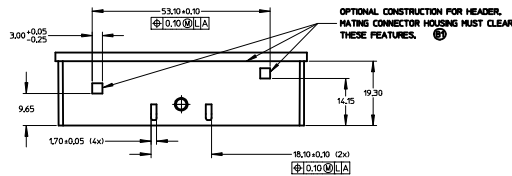


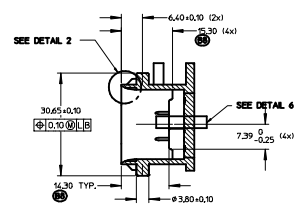
- NOTES:
1. ALL DIMENSIONS SHOWN IN MILLIMETERS.
  2. DIMENSIONING AND TOLERANCING PER ASME Y14.5-1994.
  3. RADIUS ON ALL CORNERS SHOWN SHARP OR ALL UNSPECIFIED RADII 0.25 EXCEPT AS NOTED.
  4. REFER TO "SAE/USCAR-12 CONNECTOR DESIGN GUIDELINES" FOR ADDITIONAL INFORMATION.
  5. 0.25 DEGREE DRAFT ON ALL INSIDE SURFACES, UNLESS OTHERWISE SPECIFIED.
  6. STANDARD COLORS FOR POLARIZATION - DEVIATION REQUIRES APPROVAL OF AUTHORIZED PERSON.
  7. REFER TO DRAWING ENCAP-001 FOR TERMINAL GEOMETRY AND PLATING DETAILS.



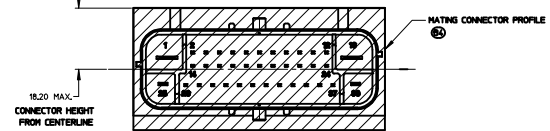
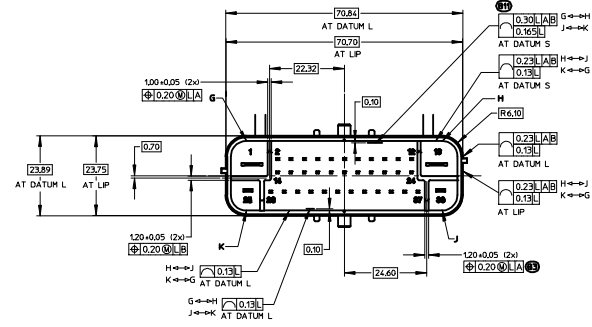
SECTION C-C



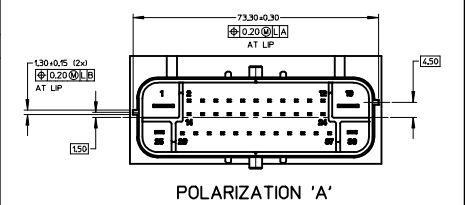
SECTION B-B



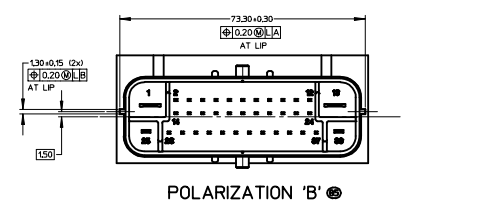
SECTION D-D



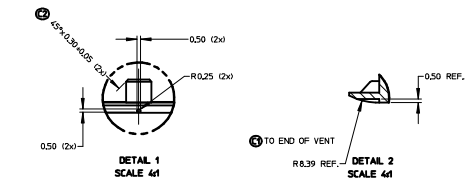
999-S-038-C01	C	BROWN
999-S-038-001	B	GRAY
999-S-038-A01	A	BLACK
USCAR PART NO.	OPTION	COLOR



POLARIZATION 'A'

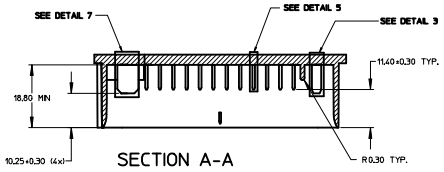


POLARIZATION 'B'

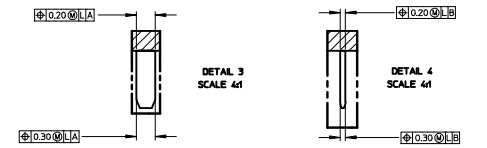


TO BE DETERMINED

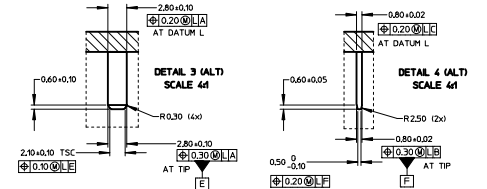
POLARIZATION 'C'



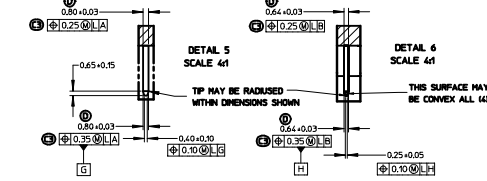
SECTION A-A



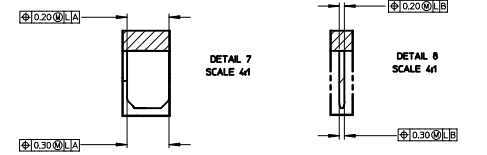
2.80MM BLADE DETAIL



2.80MM BLADE DETAIL (ALTERNATE)



0.80X0.64MM BLADE DETAIL



6.30MM BLADE DETAIL

059	D	REVISED 0.64mm x 0.80mm PIN SIZE TOLERANCE ±0.03	03292005	MCD	BBW
C5		REVISED 0.64mm POS. 0.25 BASE/0.35 TIP			
C2		ADDED CHAMFER DIMENSION 45°±0.30±0.05			
0591	C1	CLARIFIED LOCATION OF TANGENT POINT	10252004	MCD	BBW
B11		INCREASED TOLERANCE ON LONG SIDES			
B9		DIMENSION FEATURES TO FRONT OF SHROUD			
B8		REVISED GD&T ON 0.80X0.64 BLADE			
B7		ADDED CIRCUIT DIVIDER HEIGHT			
B6		ADDED SEALING AREA DESCRIPTION			
B5		REMOVED ENCAP FROM TITLE BLOCK			
B4		ADDED POLARIZATION 'B'			
B3		ADDED MATING CONN. PROFILE			
B2		CHANGED DIVIDER WALL TOLERANCE TO 0.20			
B1		ADDED OPTIONAL BLADE CONSTRUCTION			
0031	B1	ADDED STANDOFF RIBS	12022003	MCD	BBW
0031	A	RELEASED	08252003	MCD	BBW
LET		REVISION RECORD	DATE	DWN	CHK
TOLERANCES UNLESS OTHERWISE SPECIFIED					
DIMENSIONS ARE IN MILLIMETERS					
ANGLES °					
X-Y-Z					
THIRD ANGLE PROJECTION					
SCALE	2:1	DATE	08/25/2003		
DRW BY	DANIELS	CHKD BY	WILSON		
30 CIRCUIT ABS CONNECTOR INTERFACE -OPTION 2					
REV	1	DATE	08/25/2003		
APP'D		DESIGNED BY			
CHK'D		DATE			



**TABLE OF CONTENTS**

SHEET NO.	SHEET DESCRIPTION
1	NOTES AND BOM
2	CONFIGURATIONS
3	RECEPTACLE CONNECTOR ASSEMBLY
4	WIRE SHIELD

**MATING INTERFACE DRAWINGS**

SERIES	INTERFACE DEFINITION
31380	*999-S-038-3-Z01
31381	*999-S-038-3-Z02

NOTES: VALID UNLESS OTHERWISE SPECIFIED

- CONNECTOR TO BE SHIPPED WITH TPA IN PRE-LOAD POSITION AS SHOWN IN SECTION Z-Z.
- ALL TEXT TO BE CLEARLY LEGIBLE AND 1.50MM MIN. HEIGHT. MARKING ORIENTATION MAY BE PARALLEL TO THE LENGTH OF THE PART, AS SHOWN, OR PERPENDICULAR TO THE LENGTH OF THE PART.

DATE CODE DESCRIPTION:

- 1st THROUGH 3rd DIGIT = "DAY#" OF THE CALENDAR YEAR. (EXAMPLE FEB. 3rd = '034')
  - LAST DIGIT = LAST DIGIT OF CALENDAR YEAR. (EXAMPLE: 2000 = '0')
- SERIAL NUMBER DESCRIPTION:
- FIRST CHARACTER "M." = ASSEMBLY MACHINE NUMBER
  - FOLLOWING NUMBER STARTS AT "00001" AND IS RESET FOR EACH NEW "DAY#".
- MOLEX PART NUMBER:
- SEE TABLE

3. DIMENSIONS NOT SHOWN CAN BE OBTAINED FROM THE ASSOCIATED MODEL.

4. GENERAL:

- APPLICATION SPECIFICATION SEE: AS-31380-001
  - CONTAINS: PRODUCT INTRODUCTION, PRODUCT SUMMARY, HARNESS ASSEMBLY, CONNECTOR MATING, AND SERVICE INSTRUCTIONS.
  - DESIGNED TO MATE WITH DEVICE AS SPECIFIED IN THE MATING INTERFACE DRAWINGS CHART.
  - \*DENOTES DRAWINGS THAT CAN BE ACCESSED AT <<http://ewcap.uscarteams.org/>>.
- PRODUCT SPECIFICATION SEE: PS-31380-100
  - CONTAINS: PRODUCT INTRODUCTION, PRODUCT SUMMARY, RATINGS (CURRENT AND TEMPERATURE), TERMINALS, WIRE DIAMETER RANGE, PRODUCT VALIDATION, AND PRODUCT DEVIATIONS.
- PACKAGING SPECIFICATION PER MOLEX DRAWING: PK-31300-550
- PARTS MUST BE IN COMPLIANCE TO MOLEX CHEMICAL SUBSTANCES FOR PRODUCTS AND PACKAGING SPECIFICATION: QEHS-699000-300
- DATA MUST BE SUBMITTED UNDER THE MOLEX PART NUMBER TO IMDS (COMPANY ID#13255)

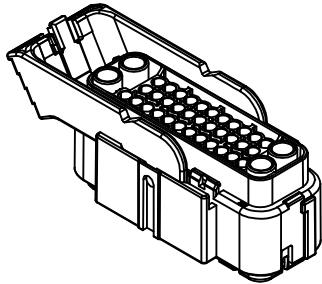
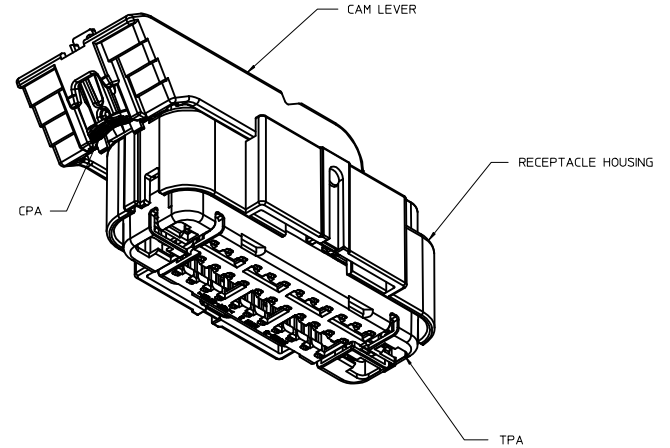
5. DESIGN - MATERIALS:

- SEE BOM TABLE IN SD-31380-0002

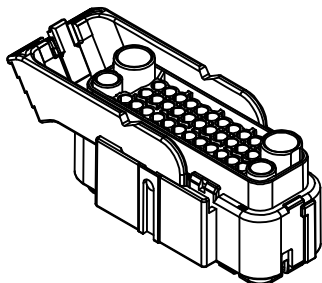
6. DESIGN - GEOMETRY:

- THE 3-D CAD DATA IS BASIC (WITHOUT TOLERANCE) AND MASTER FOR THIS PART WITH THE EXCEPTION OF UNDERLINED DIMENSIONS. DIMENSIONAL INFORMATION NOT SHOWN ON THIS DRAWING IS DEFINED BY THE DATA FILE AT ITS LATEST REVISION.
- GEOMETRIC DIMENSIONS AND TOLERANCES PER ASME Y14.5M-2009
- EDGES AND UNDIMENSIONED DETAILS PER ISO13715
- CORNERS SHOWN AS SHARP TO BE R 0.2 MAX.
- VISUAL DEFECTS SHALL MEET COSMETIC STANDARD PS-45499-002 (Class B).

7. MUST BE USED WITH WIRE SHIELD - MOLEX PART NUMBER 31382-1001. WIRE SHIELD SHIPPED SEPARATELY.



31381 SERIES



31380 SERIES

INSPECTION NUMBER LOG	
LAST NUMBER: 2	A INITIAL RELEASE
ADDED:	
REMOVED:	

REVISION	DESCRIPTION	QUALITY SYMBOLS		GENERAL TOLERANCES (UNLESS SPECIFIED)		DIMENSION STYLE		DRAWN BY	DATE	CHECKED BY	DATE	APPROVED BY	DATE	MATERIAL NO.	DOCUMENT NO.	SHEET NO.
		mm	INCH	MM ONLY	SCALE	DESIGN UNITS	THIRD ANGLE PROJECTION									
1	ENTER DESCRIPTION EC NO: UAU2014-1972 DRWNA:PROFFITT 2014/06/26 CHKOR:RIZZI 2014/06/27 APPR:VKOSHY 2014/06/30	▽=0	▽=0	4 PLACES ±---	±---	MM ONLY	1.5:1	APPROFFITT	2014/06/26			APPROVED BY	2014/06/30	SEE NOTE 5a.	SD-31380-0001	1 OF 4
		▽=0	▽=0	3 PLACES ±---	±---											
		▽=0	▽=0	2 PLACES ±0.13	±---											
		▽=0	▽=0	1 PLACE ±0.25	±---											
		▽=0	▽=0	0 PLACE ±---	±---											
				ANGULAR ± 1°												
				DRAFT WHERE APPLICABLE MUST REMAIN WITHIN DIMENSIONS												

USCAR 38 WAY HYBRID RCPT SEALED ASSEMBLY

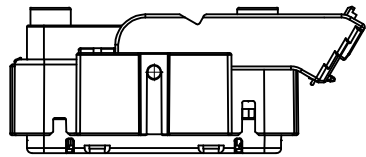
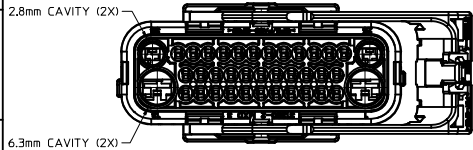


SD-31380-0001

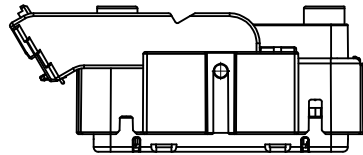
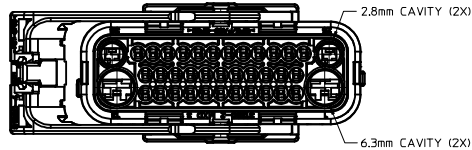
THIS DRAWING CONTAINS INFORMATION THAT IS PROPRIETARY TO MOLEX INCORPORATED AND SHOULD NOT BE USED WITHOUT WRITTEN PERMISSION

**SHEET DESCRIPTION**

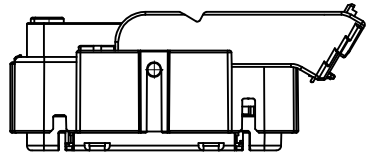
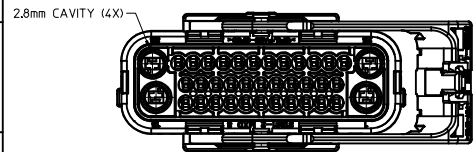
CONFIGURATIONS



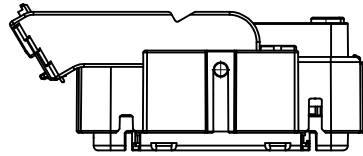
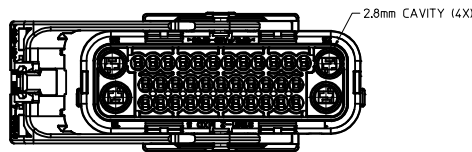
31380-10XX  
TYPE II HARNESS ASSEMBLY  
COUNTERCLOCKWISE LEVER THROW



31380-11XX  
TYPE II HARNESS ASSEMBLY  
CLOCKWISE LEVER THROW



31381-10XX  
TYPE I HARNESS ASSEMBLY  
COUNTERCLOCKWISE LEVER THROW



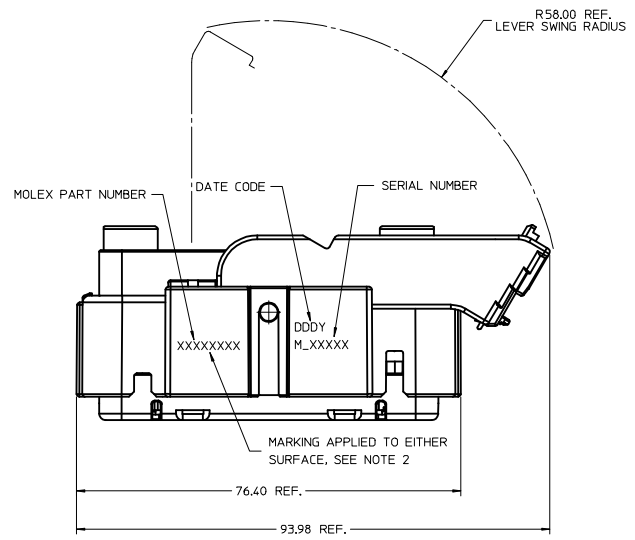
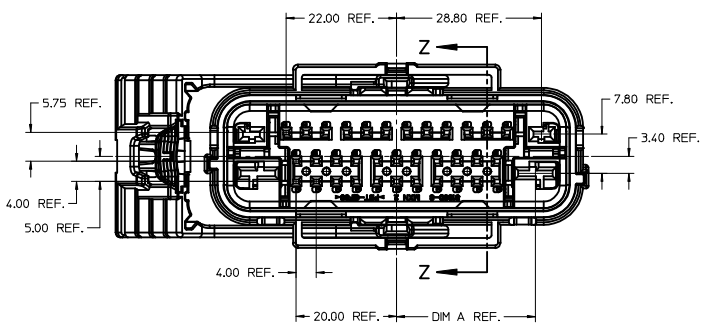
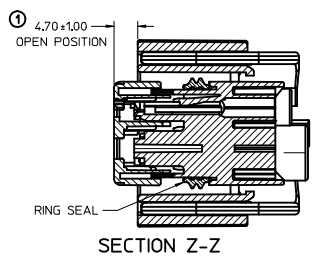
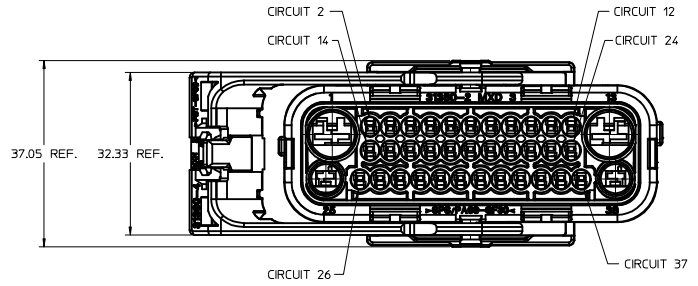
31381-11XX  
TYPE I HARNESS ASSEMBLY  
CLOCKWISE LEVER THROW

<b>ENTER DESCRIPTION</b> EDC NO: UAU2014-1972 DRAWN BY: APROFFITT 2014/06/26 CHECKED BY: CHYKORIZZI 2014/06/27 APPR: VKOSHY 2014/06/30 A	QUALITY SYMBOLS ▽=0 ▽=0 ▽=0	GENERAL TOLERANCES (UNLESS SPECIFIED)		DIMENSION STYLE <b>MM ONLY</b>		SCALE <b>1.5:1</b>	DESIGN UNITS <b>METRIC</b>	THIRD ANGLE PROJECTION	
		4 PLACES ± --- ± --- 3 PLACES ± --- ± --- 2 PLACES ± 0.13 ± --- 1 PLACE ± 0.25 ± --- 0 PLACE ± --- ± ---	mm INCH	DRAWN BY APROFFITT	DATE 2014/06/26	TITLE <b>USCAR 38 WAY HYBRID RCPT SEALED ASSEMBLY</b>			
		ANGULAR ± 1 °		APPROVED BY VKOSHY	DATE 2014/06/30	DOCUMENT NO. <b>SD-31380-0001</b>			
		DRAFT WHERE APPLICABLE MUST REMAIN WITHIN DIMENSIONS		SEE NOTE 5a.		SHEET NO. 2 OF 4			

THIS DRAWING CONTAINS INFORMATION THAT IS PROPRIETARY TO MOLEX INCORPORATED AND SHOULD NOT BE USED WITHOUT WRITTEN PERMISSION

**SHEET DESCRIPTION**  
RECEPTACLE CONNECTOR ASSEMBLY

CHARTED DIMENSIONS	
SERIES	DIMENSION
31380	A
31381	27.58



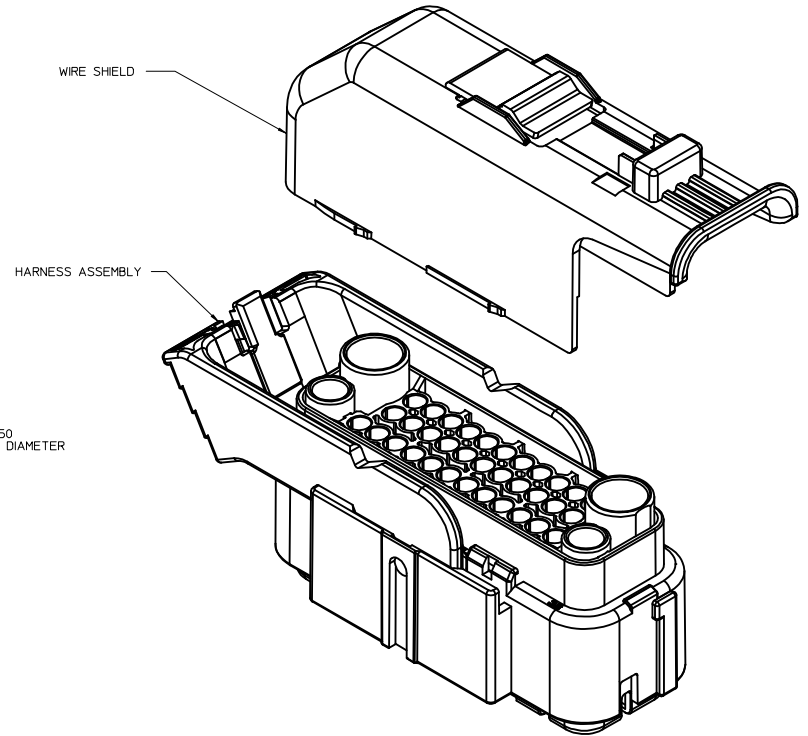
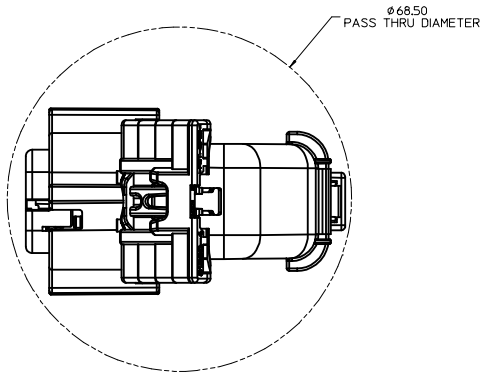
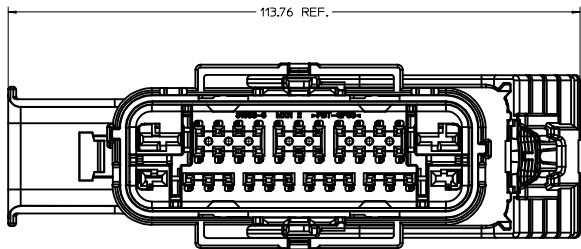
<b>ENTER DESCRIPTION</b> EC NO: UAU2014-1972 DRW/APPROFIT 2014/06/26 CHK/KR/IZI 2014/06/27 APPR:VKOSHY 2014/06/30	<b>QUALITY SYMBOLS</b> ∇=0 ∇=0 ∇=0	<b>GENERAL TOLERANCES (UNLESS SPECIFIED)</b>		<b>DIMENSION STYLE</b> MM ONLY		SCALE 2:1	DESIGN UNITS METRIC	THIRD ANGLE PROJECTION	
		4 PLACES ± --- ± --- 3 PLACES ± --- ± --- 2 PLACES ± 0.13 ± --- 1 PLACE ± 0.25 ± --- 0 PLACE ± --- ± ---	m/m INCH	DRAWN BY APROFFITT	DATE 2014/06/26	TITLE USCAR 38 WAY HYBRID RCPT SEALED ASSEMBLY			
		ANGULAR ± 1 ° DRAFT WHERE APPLICABLE MUST REMAIN WITHIN DIMENSIONS		APPROVED BY VKOSHY	DATE 2014/06/30	MATERIAL NO. SEE NOTE 5a.			
				DOCUMENT NO. SD-31380-0001		SHEET NO. 3 OF 4			



**SHEET DESCRIPTION**  
WIRE SHIELD

WIRESHIELD NOTES: VALID UNLESS OTHERWISE SPECIFIED

1. GENERAL:  
 a. APPLICATION SPECIFICATION SEE: AS-31380-001  
 -WIRE SHIELD (MOLEX PART NUMBER 31382-1001) MUST BE USED WITH HARNESS ASSEMBLY  
 -WIRE SHIELD SHIPPED SEPARATELY  
 -FOR ADDITIONAL INFORMATION SEE THE WIRE SHIELD COMPONENT DRAWING SD-31382-100.



<b>ENTER DESCRIPTION</b> EC NO: UAU2014-1972 DRWNG: APROFF/TT 2014/06/26 CHKDR: R/ZZI 2014/06/27 APPR: VKOSHY 2014/06/30	<b>QUALITY SYMBOLS</b> ∇=0 ∇=0 ∇=0	<b>GENERAL TOLERANCES (UNLESS SPECIFIED)</b>		<b>DIMENSION STYLE</b> MM ONLY		SCALE 2.5:1	DESIGN UNITS METRIC	THIRD ANGLE PROJECTION
		4 PLACES ± --- ± --- 3 PLACES ± --- ± --- 2 PLACES ± 0.13 ± --- 1 PLACE ± 0.25 ± --- 0 PLACE ± --- ± ---	mm INCH	DRAWN BY APROFF/TT	DATE 2014/06/26	TITLE USCAR 38 WAY HYBRID RCPT SEALED ASSEMBLY		
		ANGULAR ± 1 °		APPROVED BY VKOSHY	DATE 2014/06/30	DOCUMENT NO. SD-31380-0001		
		DRAFT WHERE APPLICABLE MUST REMAIN WITHIN DIMENSIONS		SEE NOTE 5a.		SHEET NO. 4 OF 4		

ASSEMBLY DESCRIPTION	ASSEMBLY PART NUMBER	COMPONENT						BLOCKED TERMINALS																																
		THE PRESENCE OF AN ABBREVIATION INDICATES THE PRESENCE OF THAT COMPONENT.						CAVITY WITH A NUMBER INDICATES BLOCKED TERMINAL POSITION CAVITY WITHOUT A NUMBER INDICATES OPEN TERMINAL POSITION																																
		HOUSING KEY/COLOR	TPA	CAM LEVER	CPA	RING SEAL	LEVER THROW	2	3	4	5	6	7	8	9	10	11	12	14	15	16	17	18	19	20	21	22	23	24	26	27	28	29	30	31	32	33			
KEY A, BLACK, CCW THROW	31380-1000	A2-BLK	TPA-2	CL	CPA	R	CCW																																	
KEY A, BLACK, CCW THROW	31380-1001	A2-BLK	TPA-2	CL	CPA	R	CCW	2	3	4	5	6	7	8	9	10	11	12	14	15	16	17	18	19	20	21	22	23	24	26	27	28	29	30	31	32	33			
KEY A, BLACK, CCW THROW	31380-1003	A2-BLK	TPA-2	CL	CPA	R	CCW			4	5		7			10	11	12			16	17		19			22	23	24	26			29	30	31	32	33			
KEY A, BLACK, CCW THROW	31380-1004	A2-BLK	TPA-2	CL	CPA	R	CCW			4	5		7				12			16	17					22	23	26			29	30	31	32						
KEY A, BLACK, CCW THROW	31380-1005	A2-BLK	TPA-2	CL	CPA	R	CCW						7	8	9	10	11			15	16				20	22						27			30	31				
KEY A, BLACK, CCW THROW	31380-1008	A2-BLK	TPA-2	CL	CPA	R	CCW						7	8		10				15				20	22								27			30				
KEY A, BLACK, CCW THROW	31380-1009	A2-BLK	TPA-2	CL	CPA	R	CCW						7	8		10	11			15	16			20	22							27			30	31				
KEY A, BLACK, CCW THROW	31380-1010	A2-BLK	TPA-2	CL	CPA	R	CCW	2			5	6	7	8	9	10	11		14					20	22					26			29			31				
KEY A, BLACK, CCW THROW	31380-1011	A2-BLK	TPA-2	CL	CPA	R	CCW						7			10	11			15				20	22									30			32			
KEY A, BLACK, CCW THROW	31380-1014	A2-BLK	TPA-2	CL	CPA	R	CCW									10	11			14	15			18			22					26	27							
KEY A, BLACK, CCW THROW	31380-1015	A2-BLK	TPA-2	CL	CPA	R	CCW						7	8		10				16				20							26	27			30	31				
KEY A, BLACK, CCW THROW	31380-1016	A2-BLK	TPA-2	CL	CPA	R	CCW						7	8		10				16			19	20						26	27			30						
KEY A, BLACK, CW THROW	31380-1100	A2-BLK	TPA-2	CL	CPA	R	CW																																	
KEY A, BLACK, CW THROW	31380-1101	A2-BLK	TPA-2	CL	CPA	R	CW	2	3	4	5	6	7	8	9	10	11	12	14	15	16	17	18	19	20	21	22	23	24	26	27	28	29	30	31	32	33			
KEY A, BLACK, CW THROW	31380-1102	A2-BLK	TPA-2	CL	CPA	R	CW					6			9	10			14	15									24	26	27									
KEY A, BLACK, CW THROW	31380-1105	A2-BLK	TPA-2	CL	CPA	R	CW						7	8	9	10	11			15	16			20	22								27			30	31			
KEY A, BLACK, CW THROW	31380-1106	A2-BLK	TPA-2	CL	CPA	R	CW	2			5	6	7	8	9	10	11						20	22						26			29			31	32			
KEY A, BLACK, CW THROW	31380-1107	A2-BLK	TPA-2	CL	CPA	R	CW	2			5	6	7	8	9	10	11		14				20	22						26			29			31	32			
KEY A, BLACK, CW THROW	31380-1108	A2-BLK	TPA-2	CL	CPA	R	CW						7	8		10				15				20	22							27			30					
KEY A, BLACK, CW THROW	31380-1111	A2-BLK	TPA-2	CL	CPA	R	CW						7			10	11			14	15			20	22							27			30		32			
KEY A, BLACK, CW THROW	31380-1112	A2-BLK	TPA-2	CL	CPA	R	CW						7	8	9	10	11		14	15	16		18	20	22				26	27					31	32				
KEY A, BLACK, CW THROW	31380-1113	A2-BLK	TPA-2	CL	CPA	R	CW						7		9	10	11		14	15			18			22			26	27							32			
KEY A, BLACK, CW THROW	31380-1114	A2-BLK	TPA-2	CL	CPA	R	CW	2			5		7			10	11		14					20	22					26			29							
KEY A, BLACK, CCW THROW	31380-1115	A2-BLK	TPA-2	CL	CPA	R	CCW	2	3		5	6							14	15	16									26	27			30	31	32	33			
KEY A, BLACK, CW THROW	31380-1116	A2-BLK	TPA-2	CL	CPA	R	CW	2	3		5	6							14	15	16									26	27	28	29	30	31	32	33			

ASSEMBLY DESCRIPTION	ASSEMBLY PART NUMBER	COMPONENT							BLOCKED TERMINALS																															
		THE PRESENCE OF AN ABBREVIATION INDICATES THE PRESENCE OF THAT COMPONENT.							CAVITY WITH A NUMBER INDICATES BLOCKED TERMINAL POSITION CAVITY WITHOUT A NUMBER INDICATES OPEN TERMINAL POSITION																															
		HOUSING KEY/COLOR	TPA	CAM LEVER	CPA	RING SEAL	LEVER THROW	2	3	4	5	6	7	8	9	10	11	12	14	15	16	17	18	19	20	21	22	23	24	26	27	28	29	30	31	32	33			
KEY A, BLACK, CCW THROW	31381-1000	A1-BLK	TPA-1	CL	CPA	R	CCW																																	
KEY A, BLACK, CCW THROW	31381-1001	A1-BLK	TPA-1	CL	CPA	R	CCW	2	3	4	5	6	7	8	9	10	11	12	14	15	16	17	18	19	20	21	22	23	24	26	27	28	29	30	31	32	33			
KEY A, BLACK, CCW THROW	31381-1002	A1-BLK	TPA-1	CL	CPA	R	CCW	2	3	4	5		7	8	9	10	11	12			16				20	21		23	24				29	30			32	33		
KEY A, BLACK, CCW THROW	31381-1003	A1-BLK	TPA-1	CL	CPA	R	CCW			4			7	8	9	10	11	12						20	21		23	24								32	33			
KEY A, BLACK, CCW THROW	31381-1005	A1-BLK	TPA-1	CL	CPA	R	CCW			4			7	8	9							17					22	23						29	30					
KEY A, BLACK, CCW THROW	31381-1006	A1-BLK	TPA-1	CL	CPA	R	CCW			4	5		7	8	9							17					22	23					28	29	30					
KEY A, BLACK, CCW THROW	31381-1009	A1-BLK	TPA-1	CL	CPA	R	CCW					7										17					22	23												
KEY A, BLACK, CCW THROW	31381-1010	A1-BLK	TPA-1	CL	CPA	R	CCW	2	3	4		6			9	10	11	12	14				17	18		21			24			28	29	30	31	32	33			
KEY A, BLACK, CCW THROW	31381-1011	A1-BLK	TPA-1	CL	CPA	R	CCW					6			9							17	18		21															
KEY A, BLACK, CCW THROW	31381-1012	A1-BLK	TPA-1	CL	CPA	R	CCW	2	3	4			7	8	9	10	11	12			16	17				22	23							29	30					
KEY A, BLACK, CCW THROW	31381-1013	A1-BLK	TPA-1	CL	CPA	R	CCW	2	3	4			7	8	9	10	11	12			16	17				22								29						
KEY A, BLACK, CCW THROW	31381-1014	A1-BLK	TPA-1	CL	CPA	R	CCW	2	3	4			7		9		11	12	14	15	16									26	27	28	29	30	31	32	33			
KEY A, BLACK, CCW THROW	31381-1015	A1-BLK	TPA-1	CL	CPA	R	CCW		3	4			7	8	9							17				22	23								29	30				
KEY A, BLACK, CCW THROW	31381-1016	A1-BLK	TPA-1	CL	CPA	R	CCW		3	4			7	8	9							17				22	23								29	30				
KEY A, BLACK, CCW THROW	31381-1017	A1-BLK	TPA-1	CL	CPA	R	CCW					6			9							17	18		21										29	30	31	32	33	
KEY A, BLACK, CCW THROW	31381-1018	A1-BLK	TPA-1	CL	CPA	R	CCW		3		5		7									17				22	23													
KEY A, BLACK, CCW THROW	31381-1020	A1-BLK	TPA-1	CL	CPA	R	CCW	2		4			7		9	10	11	12	14	15	16			19	20		22	23	24	26	27	28	29	30	31	32	33			
KEY A, BLACK, CCW THROW	31381-1021	A1-BLK	TPA-1	CL	CPA	R	CCW	2	3	4			7		9	10	11	12			16	17				22	23								29	30				
KEY A, BLACK, CCW THROW	31381-1022	A1-BLK	TPA-1	CL	CPA	R	CCW	2		4			7		9				14					19					26	27	28	29	30	31	32	33				
KEY A, BLACK, CCW THROW	31381-1023	A1-BLK	TPA-1	CL	CPA	R	CCW	2		4			7		9		11		14					19					26	27	28	29	30	31	32	33				
KEY A, BLACK, CCW THROW	31381-1024	A1-BLK	TPA-1	CL	CPA	R	CCW	2		4			7		9		11		14	15	16			19				26	27	28	29	30	31	32	33					
KEY A, BLACK, CCW THROW	31381-1025	A1-BLK	TPA-1	CL	CPA	R	CCW					7	8		10						16			19	20				26	27					30					
KEY A, BLACK, CCW THROW	31381-1026	A1-BLK	TPA-1	CL	CPA	R	CCW	2				7		9	10				14	15	16			19	20		22	23	24	26	27	28	29	30	31	32	33			
KEY A, BLACK, CCW THROW	31381-1027	A1-BLK	TPA-1	CL	CPA	R	CCW		3	4	5		7	8	9		11					17					22	23						29	30					
KEY A, BLACK, CCW THROW	31381-1028	A1-BLK	TPA-1	CL	CPA	R	CCW		3	4			7	8	9		11					17					22	23						29	30					
KEY A, BLACK, CCW THROW	31381-1029	A1-BLK	TPA-1	CL	CPA	R	CCW	2			5		7			10	11		14					20		22			26									32		
KEY A, BLACK, CCW THROW	31381-1030	A1-BLK	TPA-1	CL	CPA	R	CCW	2			5		7			10	11		14					20		22			26											
KEY A, BLACK, CCW THROW	31381-1031	A1-BLK	TPA-1	CL	CPA	R	CCW	2	3	4			7		9		11	12	14	15	16			19					24	26	27	28	29	30	31	32	33			
KEY A, BLACK, CCW THROW	31381-1032	A1-BLK	TPA-1	CL	CPA	R	CCW	2			5		7	8	9	10						14			17		19	20	21	22	23	24	26	27	28	29	30	31	32	33
KEY A, BLACK, CW THROW	31381-1100	A1-BLK	TPA-1	CL	CPA	R	CW																																	
KEY A, BLACK, CW THROW	31381-1101	A1-BLK	TPA-1	CL	CPA	R	CW	2	3	4	5	6	7	8	9	10	11	12	14	15	16	17	18	19	20	21	22	23	24	26	27	28	29	30	31	32	33			
KEY A, BLACK, CW THROW	31381-1119	A1-BLK	TPA-1	CL	CPA	R	CW	2		4			7		9		11		14	15	16			19																
KEY A, BLACK, CW THROW	31381-1121	A1-BLK	TPA-1	CL	CPA	R	CW				5	6		8		10							17	18		20	21	22	23	24										
KEY A, BLACK, CW THROW	31381-1122	A1-BLK	TPA-1	CL	CPA	R	CW	2	3	4			7		9		11	12	14	15	16			19					26	27	28	29	30	31	32	33				
KEY A, BLACK, CCW THROW	31381-1123	A1-BLK	TPA-1	CL	CPA	R	CCW	2					7		9									19					26	27	28	29	30	31	32	33				
KEY A, BLACK, CCW THROW	31381-1124	A1-BLK	TPA-1	CL	CPA	R	CCW		3	4		6					11	12			15	16			18															

## X-ON Electronics

Largest Supplier of Electrical and Electronic Components

*Click to view similar products for [Automotive Connectors](#) category:*

*Click to view products by [Molex](#) manufacturer:*

Other Similar products are found below :

[003-018-000](#) [60403001](#) [60993906-B](#) [M902-2131](#) [M902-2161](#) [72.330.1035.1](#) [73.353.4028.0](#) [F119300-B](#) [F166900](#) [F258300-B](#) [F358300-B](#)  
[F407400](#) [F444110](#) [F487000](#) [F509500B-B](#) [827153-1](#) [8N1515-32-24P](#) [9-1326729-8](#) [925474-1](#) [928905-1](#) [964562-4](#) [968782-1](#) [GT17SA-8DS-](#)  
[HU](#) [98891-1012](#) [98947-1016](#) [12004475-L](#) [12010290](#) [12010309-B](#) [12015454](#) [12020219-B](#) [12020308](#) [12041318-B](#) [12052225-L](#) [12052466](#)  
[12059125](#) [12064869](#) [12004327-B](#) [12010503-B](#) [12015308](#) [12015384](#) [12015909](#) [1-21030-1](#) [12041254](#) [12041318](#) [12047946-B](#) [12047957](#)  
[12047957-L](#) [12059473](#) [12066261](#) [12110546](#)