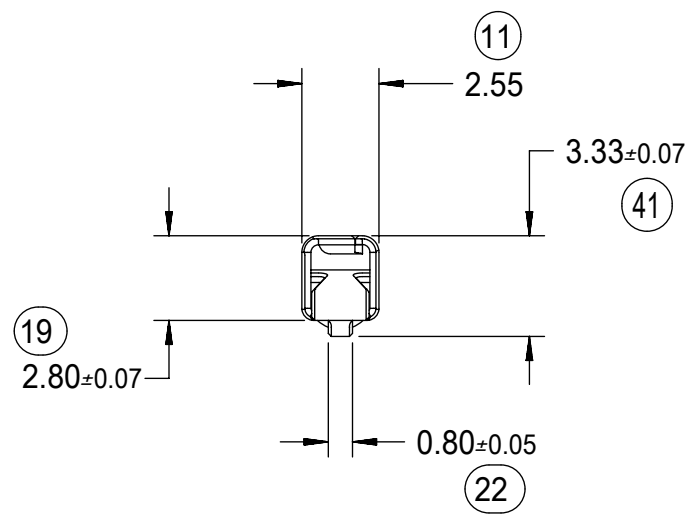


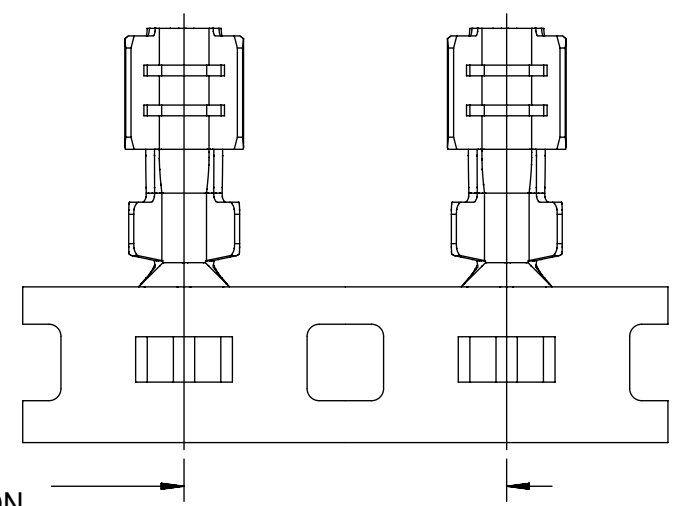
DIMENSIONS FOR LARGE POLARIZATION RIB TERMINAL ONLY

NOTES: (UNLESS OTHERWISE SPECIFIED)

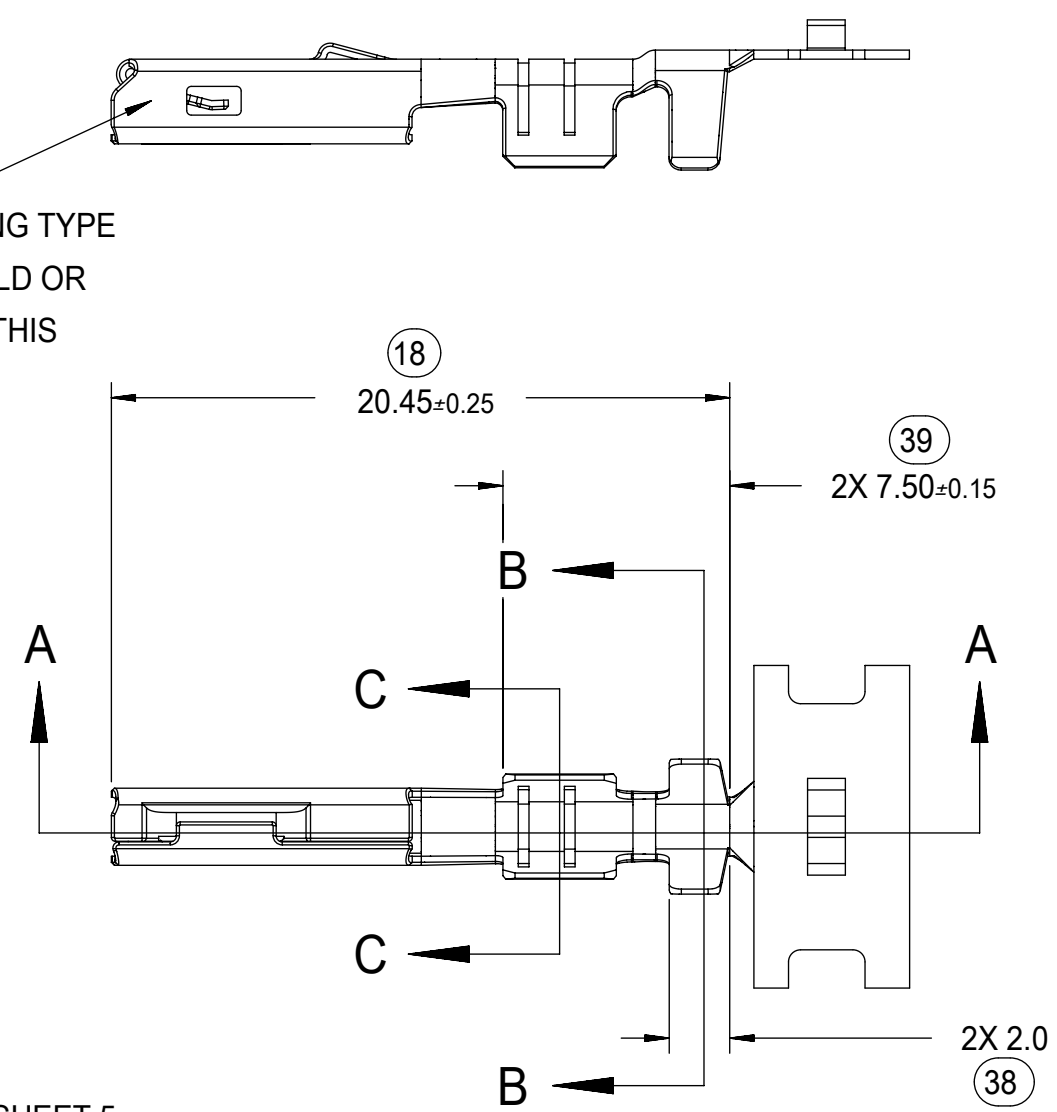
- MATING TERMINAL SHOWN ON SD-33000-001
- MATERIAL: ASTM B422, UNS C19025, HR04  
THICKNESS: 0.30 mm ±0.01  
TEMPER: FULL HARD (REF)  
TENSILE: 496 MIN MPA
- TIN PLATED TERMINAL FINISH:  
OVERALL UNDERPLATE ELECTRODEPOSITED NICKEL  
OVERALL ELECTRODEPOSITED REFLOW TIN
- GOLD PLATED TERMINAL FINISH  
OVERALL UNDERPLATE ELECTRODEPOSITED DUCTILE SULFAMATE NICKEL  
CONTACT AREA - ELECTRODEPOSITED GOLD  
GRIP AREA - ELECTRODEPOSITED 100% TIN MATTE FINISH
- SILVER PLATED TERMINAL FINISH  
OVERALL UNDERPLATE ELECTRODEPOSITED DUCTILE SULFAMATE NICKEL  
CONTACT AREA - ELECTRODEPOSITED PURE SILVER (0.5% MAX  
IMPURITIES) SEMI-BRIGHT FINISH  
- SILVER ANTI-TARNISH : EVABRITE  
GRIP AREA - ELECTRODEPOSITED 100% TIN MATTE FINISH
- MEETS PERFORMANCE SPECIFICATION FOR CABLE TO TERMINAL  
ELECTRICAL CRIMPS PER SAE/USCAR-21 (8/2001)
- MEETS PERFORMANCE STANDARD FOR AUTOMOTIVE ELECTRICAL  
CONNECTOR SYSTEMS FOR SAE/USCAR-2, REV. 4 (TEMP CLASS 3)  
(5/2004)
- MEETS ELECTRICAL CONNECTION SYSTEM DESIGN SPECIFICATION  
(SDS) REV.11 (5/2002)
- MEETS FIELD CORRELATED LIFE TEST (FCLT) PER  
SAE/USCAR-20 (6/2004)
- MEETS WIRING COMPONENT DESIGN GUIDELINES SAE/USCAR-12  
REV 2 (12/2001)
- TSC ON A DIMENSION TO BE INTERPRETED AS DISTANCE TO  
A THEORETICAL SHARP CORNER AS IF THE RADIUS WERE NOT  
PRESENT
- REFERENCE 97BG-14474-AAB FOR LARGE POLARIZATION RIB  
CAVITY SPECIFICATION
- INSERTION FORCE (TIN) AVG. FROM PV TESTING =  
3.8N LARGE POLARIZATION RIB  
3.5N SMALL POLARIZATION RIB  
(REFERENCE)
- ALL DIMENSIONS EXCEPT (33), (34), (41) & (42) ARE COMMON TO  
BOTH SMALL AND LARGE POLARIZATION RIB TERMINALS
- REFERENCE PK-31300-516 FOR REEL DIRECTION
- REFERENCE AS-33012-002 FOR CRIMP INFORMATION



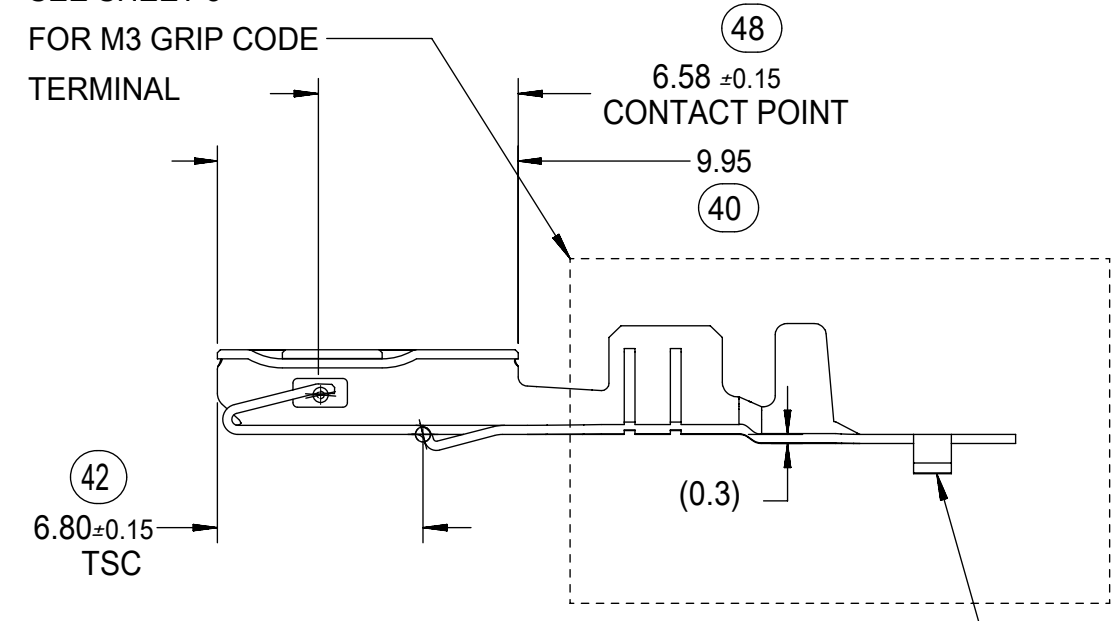
(10.67)  
PROGRESSION



STAMP PLATING TYPE  
Sn-TIN, Au-GOLD OR  
Ag-SILVER IN THIS  
AREA

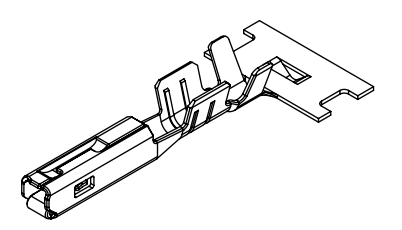


SEE SHEET 5  
FOR M3 GRIP CODE  
TERMINAL

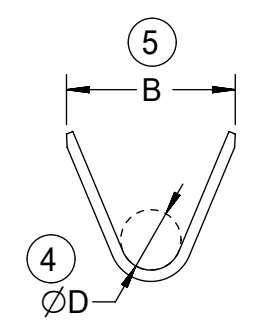


SECTION A-A

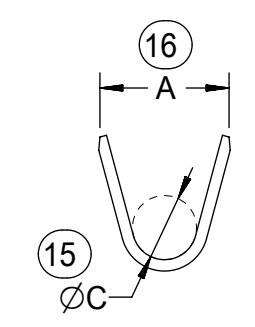
CARRIER BUMP DIRECTION  
POINTS DOWN FOR TIN PLATED TERMINALS  
POINTS UP FOR PRECIOUS PLATED TERMINALS



SCALE 2:1



SECTION B-B  
SCALE 5:1



SECTION C-C  
SCALE 5:1

THIS DRAWING CONTAINS INFORMATION THAT IS PROPRIETARY TO MOLEX ELECTRONIC TECHNOLOGIES, LLC AND SHOULD NOT BE USED WITHOUT WRITTEN PERMISSION									
SYMBOLS		DIMENSION UNITS		SCALE		CURRENT REV DESC:			
▽ = 0		mm		4:1		EC NO: 645050			
▽ = 0		GENERAL TOLERANCES (UNLESS SPECIFIED)				DRWN: BSKANTHARAJU 2020/09/03			
▽ = 0		ANGULAR TOL ± 3.0°				CHK'D: JCUATACERVAN 2020/09/18			
▽ = 0		4 PLACES ±				APPR: JCUATACERVAN 2020/09/18			
▽ = 0		3 PLACES ±				INITIAL REVISION:			
▽ = 0		2 PLACES ± 0.10				DRWN: LPULLIAM 2005/06/21			
▽ = 0		1 PLACE ± 0.3				APPR: BMOSEY 2005/06/22			
▽ = 0		0 PLACES ±				THIRD ANGLE PROJECTION			
▽ = 0		DRAFT WHERE APPLICABLE MUST REMAIN WITHIN DIMENSIONS				DRAWING		SERIES	
▽ = 0		C-SIZE		33012		MATERIAL NUMBER		CUSTOMER	
▽ = 0		SEE TABLE		GENERAL MARKET		DOCUMENT NUMBER		DOC TYPE   DOC PART   REVISION	
▽ = 0		SD-33012-002		PSD		001		D	
▽ = 0		SHEET NUMBER		1 OF 5		MATERIAL NUMBER		CUSTOMER	
▽ = 0		SEE TABLE		GENERAL MARKET		MATERIAL NUMBER		CUSTOMER	

**molex**

MX150  
RECEPTACLE TERMINAL

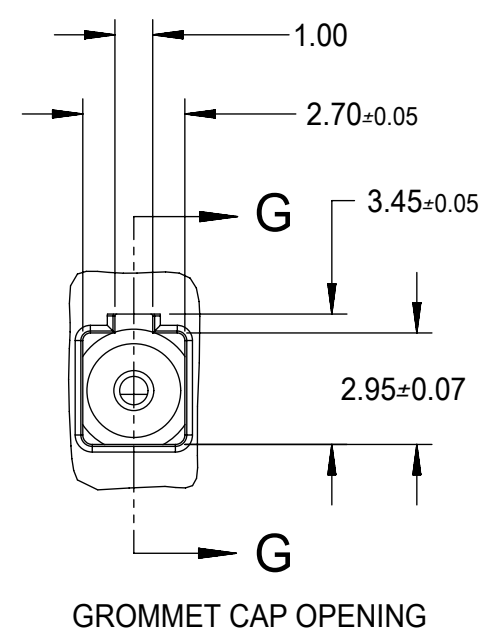
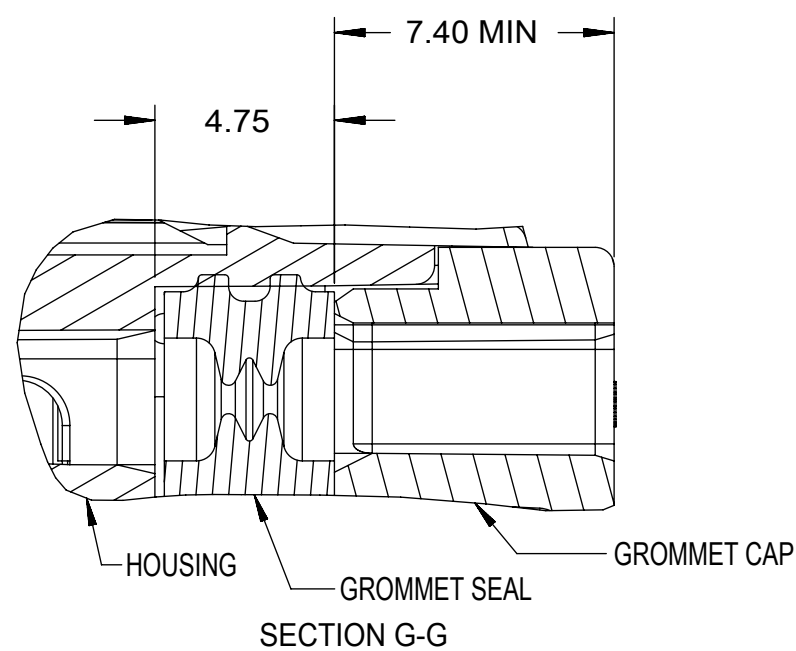
PRODUCT CUSTOMER DRAWING

FAMILY	GENDER	SEALING	PLATING	PART NUMBER	PAYOFF DIRECTION	GRIP CODE	WIRE SIZES *	A ±0.30	B ±0.30	C ±0.30	D ±0.30	SPECIAL CHARACTERISTICS
MX150	RECEPTACLE	MAT SEAL	Sn	33012-2001	RIGHT (B)	14	16/14AWG 1.25-2.00mm <sup>2</sup>	3.9	4.4	1.7	1.6	HIGH PERFORMANCE Sn
				33012-3001	LEFT (D)							
				33012-2002	RIGHT (B)	18	20/18AWG 0.75-1.00mm <sup>2</sup>	3.3	3.1	1.3	1.4	
				33012-3002	LEFT (D)							
				33012-2003	RIGHT (B)	22	22AWG	2.5	2.6	0.9	1.0	
				33012-3003	LEFT (D)							
			33012-2004	RIGHT (B)	M3	0.35-0.50mm <sup>2</sup>	2.5	2.7	0.9	1.54 ±0.1		
			33012-3004	LEFT (D)								
			Au	33001-2003	RIGHT (B)	14	16/14AWG 1.25-2.00mm <sup>2</sup>	3.9	4.4	1.7	1.6	HIGH PERFORMANCE Au
				33001-3003	LEFT (D)							
				33001-2004	RIGHT (B)	18	20/18AWG 0.75-1.00mm <sup>2</sup>	3.3	3.1	1.3	1.4	
				33001-3004	LEFT (D)							
				33001-2005	RIGHT (B)	22	22AWG	2.5	2.6	0.9	1.0	
				33001-3005	LEFT (D)							
			33001-2006	RIGHT (B)	M3	0.35-0.50mm <sup>2</sup>	2.5	2.7	0.9	1.54 ±0.1		
			33001-3006	LEFT (D)								
			Ag	33001-4001	RIGHT (B)	14	16/14AWG 1.25-2.00mm <sup>2</sup>	3.9	4.4	1.7	1.6	HIGH PERFORMANCE Ag
				33001-5001	LEFT (D)							
33001-4002	RIGHT (B)	18		20/18AWG 0.75-1.00mm <sup>2</sup>	3.3	3.1	1.3	1.4				
33001-5002	LEFT (D)											
33001-4003	RIGHT (B)	22		22AWG	2.5	2.6	0.9	1.0				
33001-5003	LEFT (D)											
33001-4005	RIGHT (B)	M3	0.35-0.50mm <sup>2</sup>	2.5	2.7	0.9	1.54 ±0.1					
33001-5005	LEFT (D)											

LARGE POLARIZATION RIB - NOT TO BE USED IN MX150 SEALED CONNECTORS

MX150	RECEPTACLE	UNSEALED	Sn	33012-2021	RIGHT (B)	14	16/14AWG 1.25-2.00mm <sup>2</sup>	3.9	4.4	1.7	1.6	HIGH PERFORMANCE Sn
				33012-3021	LEFT (D)							
				33012-2022	RIGHT (B)	18	20/18AWG 0.75-1.00mm <sup>2</sup>	3.3	3.1	1.3	1.4	
				33012-3022	LEFT (D)							
				33012-2023	RIGHT (B)	22	22AWG 0.35-0.50mm <sup>2</sup>	2.5	2.6	0.9	1.0	
				33012-3023	LEFT (D)							
			Au	33001-2021	RIGHT (B)	14	16/14AWG 1.25-2.00mm <sup>2</sup>	3.9	4.4	1.7	1.6	HIGH PERFORMANCE Au
				33001-3021	LEFT (D)							
				33001-2022	RIGHT (B)	18	20/18AWG 0.75-1.00mm <sup>2</sup>	3.3	3.1	1.3	1.4	
				33001-3022	LEFT (D)							
				33001-2023	RIGHT (B)	22	22AWG 0.35-0.50mm <sup>2</sup>	2.5	2.6	0.9	1.0	
				33001-3023	LEFT (D)							
			Ag	33001-4021	RIGHT (B)	14	16/14AWG 1.25-2.00mm <sup>2</sup>	3.9	4.4	1.7	1.6	HIGH PERFORMANCE Ag
				33001-5021	LEFT (D)							
				33001-4022	RIGHT (B)	18	20/18AWG 0.75-1.00mm <sup>2</sup>	3.3	3.1	1.3	1.4	
				33001-5022	LEFT (D)							
				33001-4023	RIGHT (B)	22	22AWG 0.35-0.50mm <sup>2</sup>	2.5	2.6	0.9	1.0	
				33001-5023	LEFT (D)							

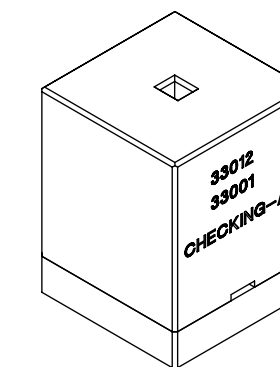
\* REFERENCE AS-33012-002 FOR SPECIFIC WIRE TYPES



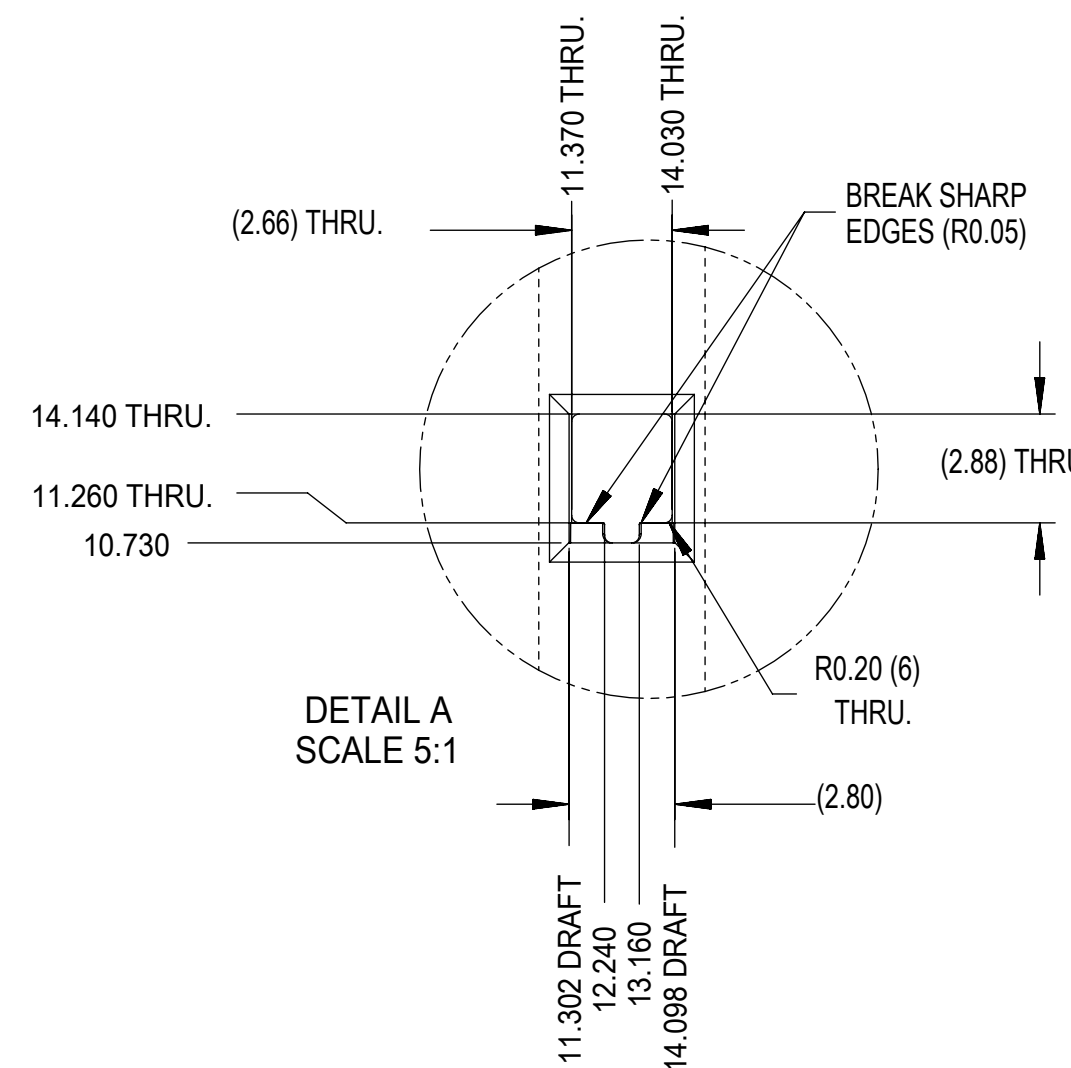
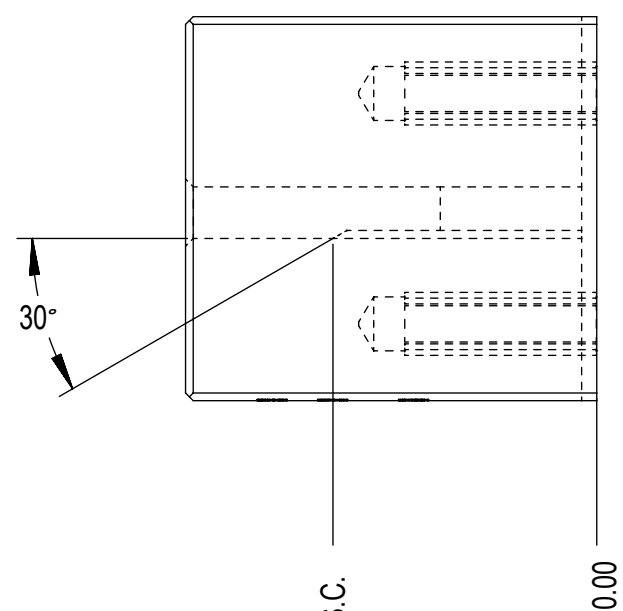
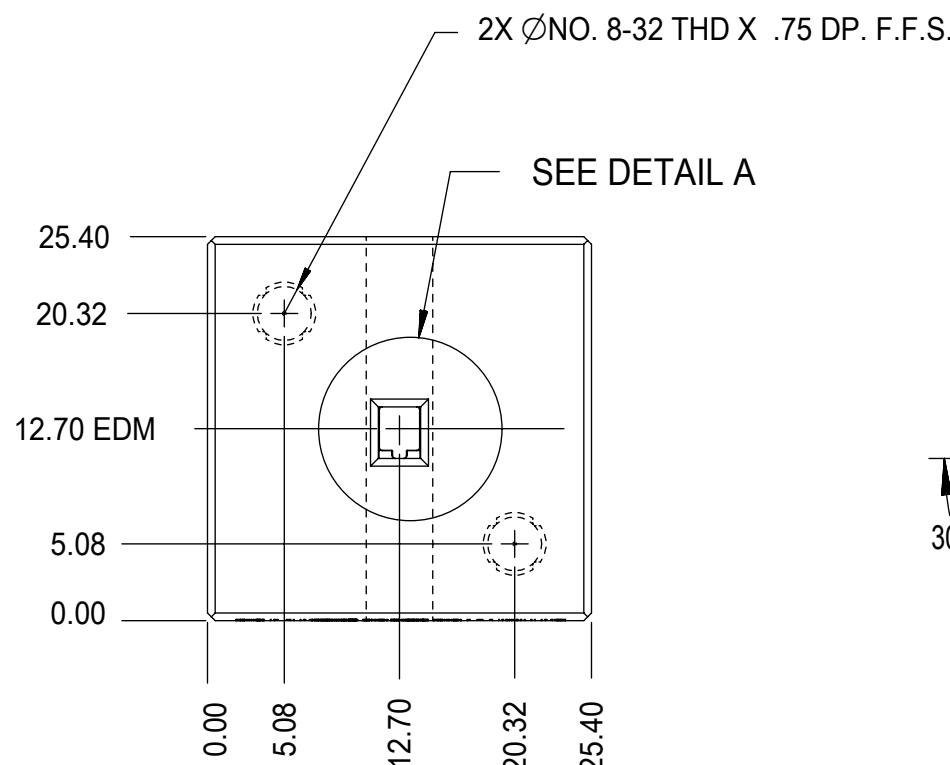
GROMMET SEAL / CAP CONFIGURATION TO MODIFY LARGE POLARIZATION RIB CAVITY TO ACCEPT SMALL POLARIZATION RIB APPLICATIONS

THIS DRAWING CONTAINS INFORMATION THAT IS PROPRIETARY TO MOLEX ELECTRONIC TECHNOLOGIES, LLC AND SHOULD NOT BE USED WITHOUT WRITTEN PERMISSION											
SYMBOLS		DIMENSION UNITS		SCALE		CURRENT REV DESC:					
▽ = 0 ▽ = 0 ▽ = 0 ▽ = 0 ▽ = 0 ▽ = 0 ▽ = 0 ▽ = 0 ▽ = 0 ▽ = 0 ▽ = 0		mm				EC NO: 645050 DRWN: BSKANTHARAJU 2020/09/03 CHK'D: JCUATACERVAN 2020/09/18 APPR: JCUATACERVAN 2020/09/18 INITIAL REVISION: DRWN: LPULLIAM 2005/06/21 APPR: BMOSEY 2005/06/22					
▽ = 0 ▽ = 0 ▽ = 0 ▽ = 0 ▽ = 0 ▽ = 0 ▽ = 0 ▽ = 0 ▽ = 0 ▽ = 0 ▽ = 0		GENERAL TOLERANCES (UNLESS SPECIFIED)		ANGULAR TOL ± 3.0°		MX150 RECEPTACLE TERMINAL PRODUCT CUSTOMER DRAWING				DOCUMENT NUMBER <b>SD-33012-002</b>	
▽ = 0 ▽ = 0 ▽ = 0 ▽ = 0 ▽ = 0 ▽ = 0 ▽ = 0 ▽ = 0 ▽ = 0 ▽ = 0 ▽ = 0		4 PLACES ±		3 PLACES ±		2 PLACES ± 0.10		1 PLACE ± 0.3		0 PLACES ±	
▽ = 0 ▽ = 0 ▽ = 0 ▽ = 0 ▽ = 0 ▽ = 0 ▽ = 0 ▽ = 0 ▽ = 0 ▽ = 0 ▽ = 0		DRAFT WHERE APPLICABLE MUST REMAIN WITHIN DIMENSIONS		THIRD ANGLE PROJECTION		DRAWING		SERIES		MATERIAL NUMBER	
▽ = 0 ▽ = 0 ▽ = 0 ▽ = 0 ▽ = 0 ▽ = 0 ▽ = 0 ▽ = 0 ▽ = 0 ▽ = 0 ▽ = 0				C-SIZE		33012		SEE TABLE		CUSTOMER GENERAL MARKET	
▽ = 0 ▽ = 0 ▽ = 0 ▽ = 0 ▽ = 0 ▽ = 0 ▽ = 0 ▽ = 0 ▽ = 0 ▽ = 0 ▽ = 0										SHEET NUMBER 2 OF 5	

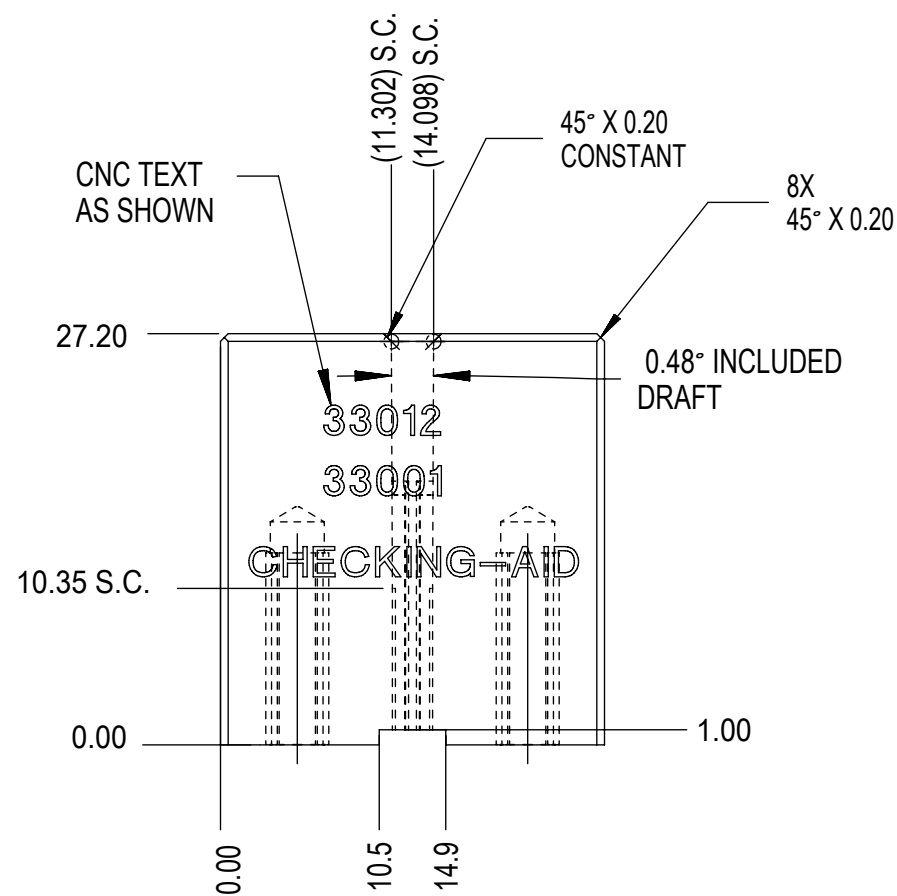
THIS CHECKING - AID IS FOR SMALL POLARIZATION RIB TERMINALS ONLY



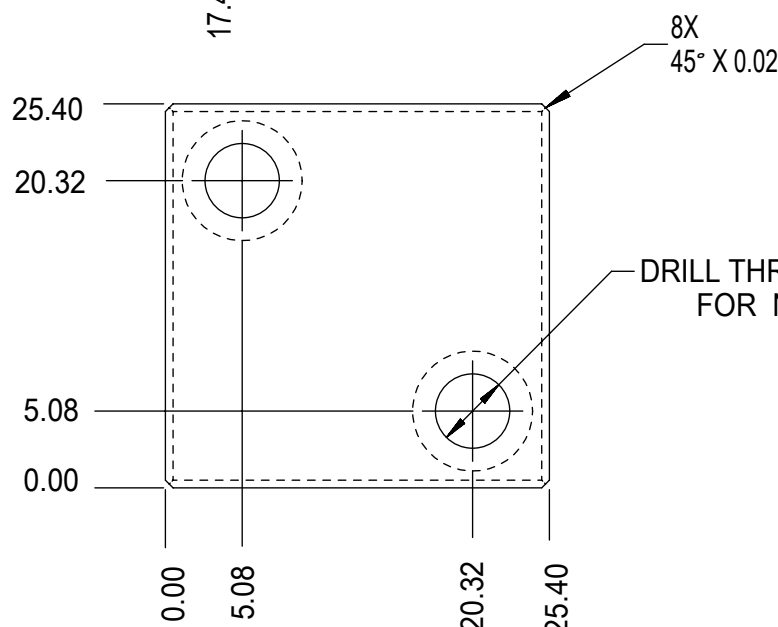
CHECKING - AID ASSEMBLY  
SCALE 1:1



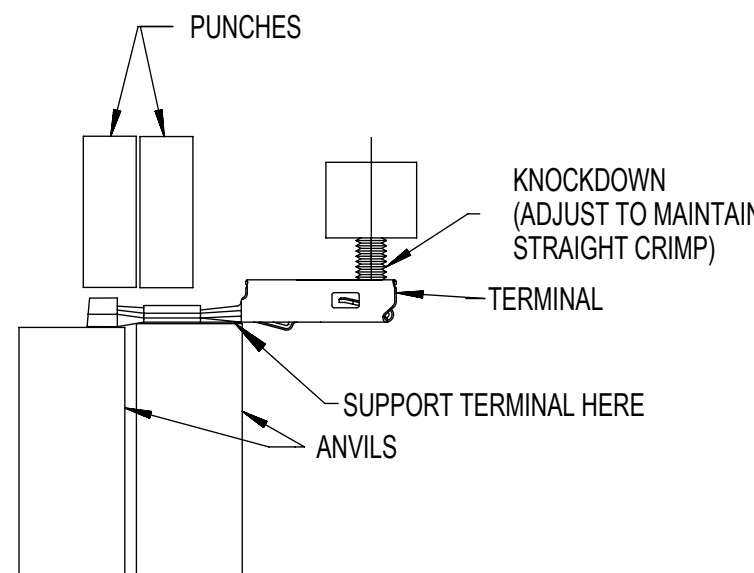
DETAIL A  
SCALE 5:1



CHECKING - AID  
UPPER



CHECKING - AID  
LOWER



CRIMP REQUIREMENTS:

1. CRIMP STRAIGHTNESS MUST BE MAINTAINED USE A KNOCKDOWN TOOL LOCATED AS SHOWN TERMINAL BOX MUST NOT BE DEFORMED
2. AFTER CRIMPING, THE CRIMPED TERMINAL (AND UP TO 5 mm OF WIRE PAST THE INSULATOR CUTOFF TAB) MUST FIT FREELY INTO THE CHECKING-AID SHOWN ON THIS PAGE
3. FOR OTHER MECHANICAL REQUIREMENTS ON CRIMPED TERMINALS, REFER TO SAE/USCAR-21 (5-13-02) SECTIONS 4.2 (VISUAL INSPECTION), 4.2 (CROSS SECTION ANALYSIS) AND 4.4 (CONDUCTOR CRIMP PULLOUT FORCE)

UPPER & LOWER  
CHECKING-AID  
A2 TOOL STEEL  
HARDEN & GRIND  
ROCKWELL "C" 56-58

THIS DRAWING CONTAINS INFORMATION THAT IS PROPRIETARY TO MOLEX ELECTRONIC TECHNOLOGIES, LLC AND SHOULD NOT BE USED WITHOUT WRITTEN PERMISSION									
SYMBOLS		DIMENSION UNITS		SCALE		CURRENT REV DESC:			
▽ = 0	0	mm	2:1	EC NO: 645050					
▽ = 0	0	GENERAL TOLERANCES (UNLESS SPECIFIED)		DRWN: BSKANTHARAJU 2020/09/03					
▽ = 0	0	ANGULAR TOL ± 3.0°		CHK'D: JCUATACERVAN 2020/09/18					
▽ = 0	0	4 PLACES ±		APPR: JCUATACERVAN 2020/09/18					
▽ = 0	0	3 PLACES ±		INITIAL REVISION:					
▽ = 0	0	2 PLACES ± 0.10		DRWN: LPULLIAM 2005/06/21					
▽ = 0	0	1 PLACE ± 0.3		APPR: BMOSEY 2005/06/22					
▽ = 0	0	0 PLACES ±		THIRD ANGLE PROJECTION		DRAWING		SERIES	
▽ = 0	0	DRAFT WHERE APPLICABLE MUST REMAIN WITHIN DIMENSIONS		C-SIZE		33012		MATERIAL NUMBER	
DOCUMENT STATUS		P1		RELEASE DATE		2020/09/18 18:32:02		SEE TABLE	
DOCUMENT STATUS		P1		RELEASE DATE		2020/09/18 18:32:02		CUSTOMER	
DOCUMENT STATUS		P1		RELEASE DATE		2020/09/18 18:32:02		GENERAL MARKET	
DOCUMENT STATUS		P1		RELEASE DATE		2020/09/18 18:32:02		SHEET NUMBER	
DOCUMENT STATUS		P1		RELEASE DATE		2020/09/18 18:32:02		3 OF 5	

**molex**

MX150  
RECEPTACLE TERMINAL

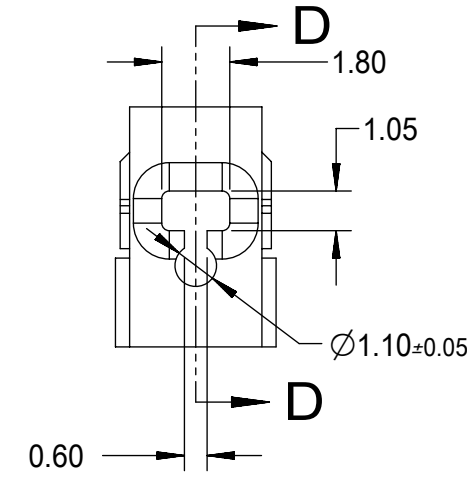
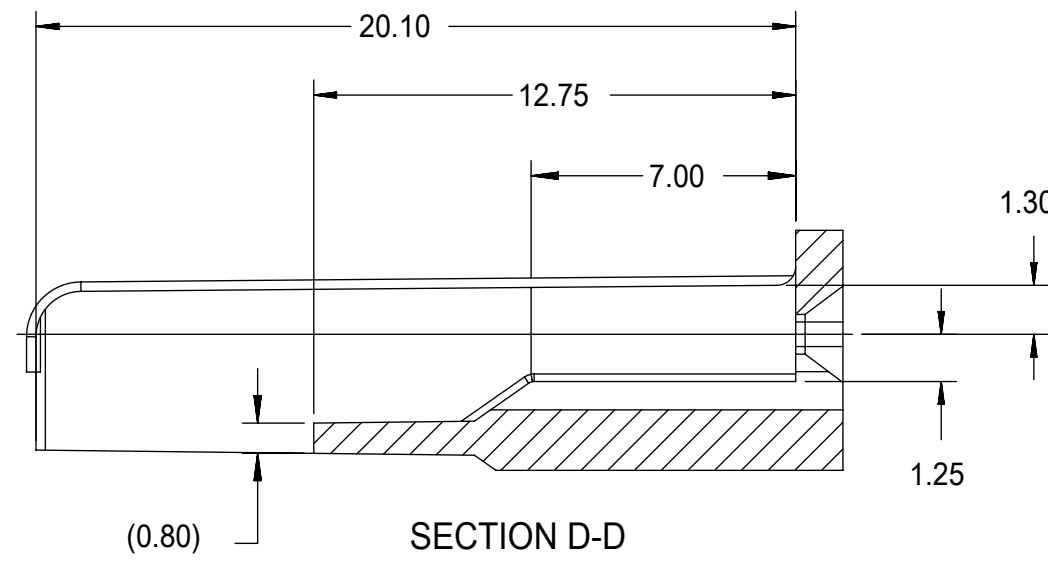
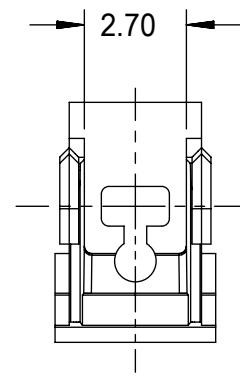
PRODUCT CUSTOMER DRAWING

DOCUMENT NUMBER DOC TYPE DOC PART REVISION

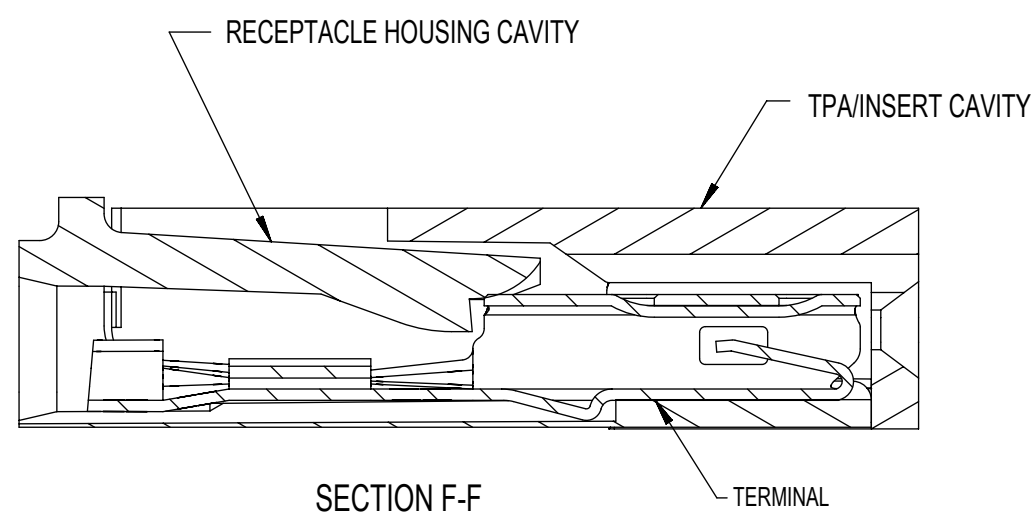
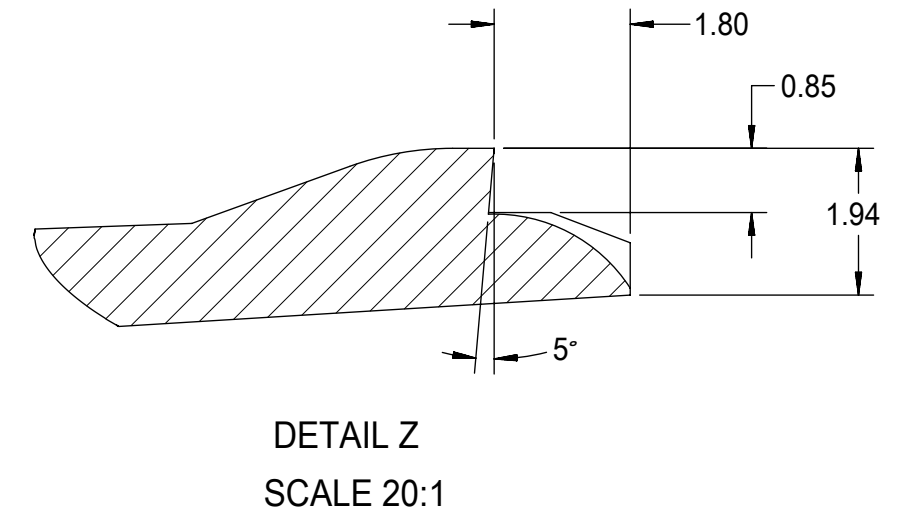
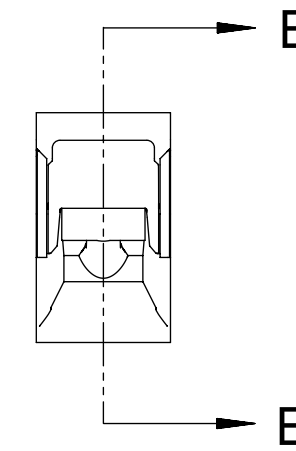
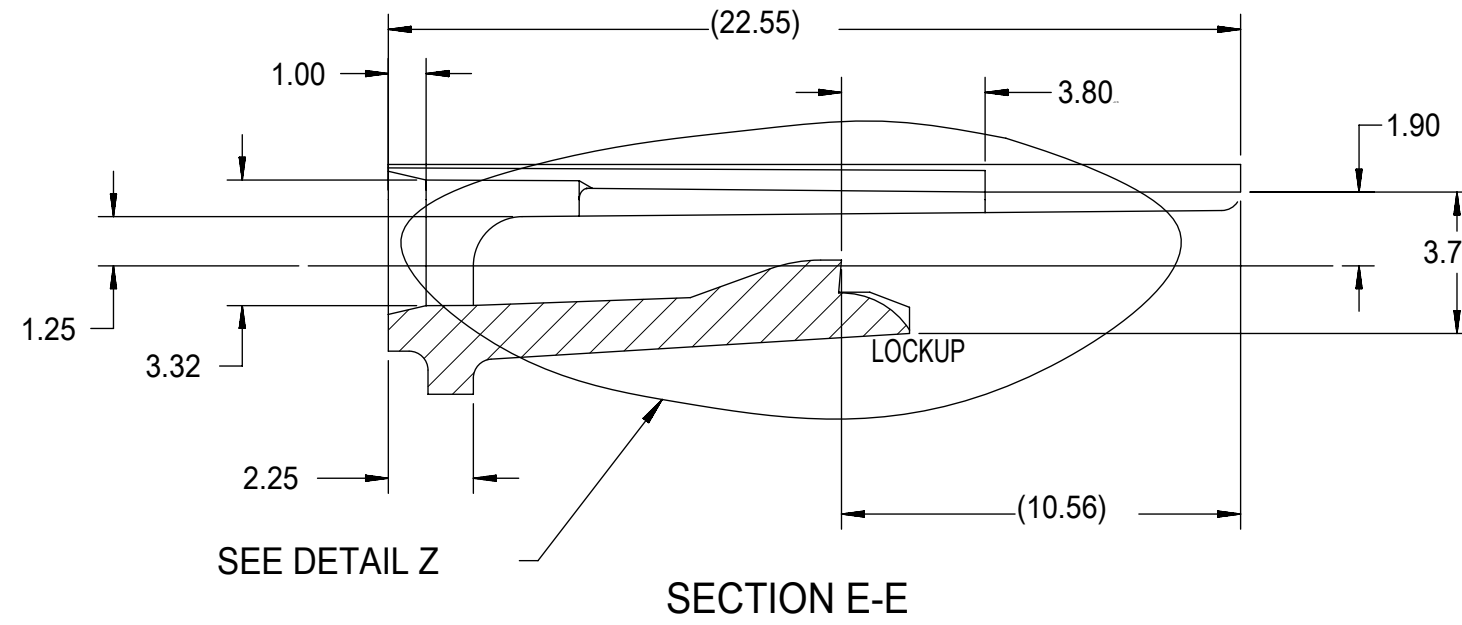
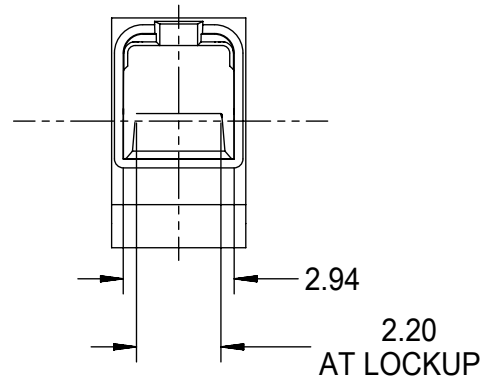
SD-33012-002 PSD 001 D

MATERIAL NUMBER CUSTOMER SHEET NUMBER

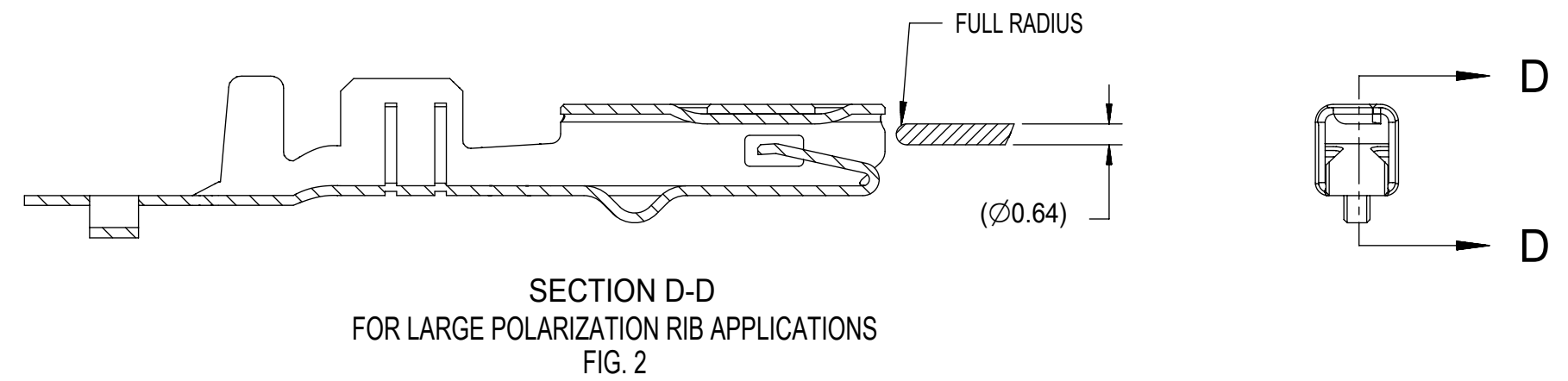
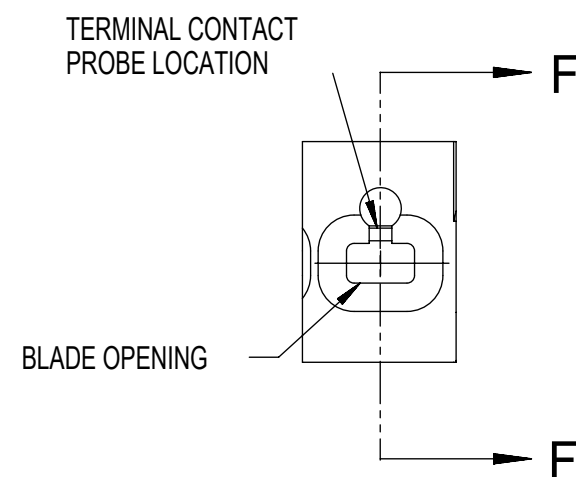
SEE TABLE GENERAL MARKET 3 OF 5



- NOTES: UNLESS OTHERWISE SPECIFIED
1. TOLERANCES: LINEAR  $\pm 0.10$   
ANGULAR  $\pm 3^\circ$
  2. ALL DRAFT WITHIN TOLERANCE.
  3. MAX RADII ON ALL CORNERS SHOWN SHARP: 0.10
  4. MAX FLASH PERMISSIBLE: 0.1
  5. EJECTOR PIN MARKS PERMISSIBLE IF FLUSH TO 0.25 BELOW SURFACE.
  6. MATERIAL: HOUSING/FINGER SPECIFICATION ENGINEERED FOR MATERIAL WITH THE FOLLOWING PROPERTIES:  
A. FLEXURAL MODULUS = 4,500 TO 9,400 MPa  
PER ASTM TEST D790  
B. ELONGATION AT YIELD = 2.3% OR BETTER  
PER ASTM TEST D638 TYPE V
  7. CAVITY SPEC FOR USE ONLY WITH MOLEX RECEPTACLE TERMINAL PART NUMBERS SPECIFIED ELSEWHERE ON THIS DRAWING



RECEPTACLE CAVITY ASSEMBLED VIEWS FOR SMALL POLARIZATION RIB APPLICATIONS FIG. 1



SECTION D-D FOR LARGE POLARIZATION RIB APPLICATIONS FIG. 2

PROBING DOWN THE THROAT MUST USE THIS TERMINAL PROBE

FOR PROBING INFORMATION REFERENCE MOLEX MX150 APPLICATION SPEC AS-33472-100

PREFERRED PROBING LOCATION IS NOT ON SPRING MEMBER

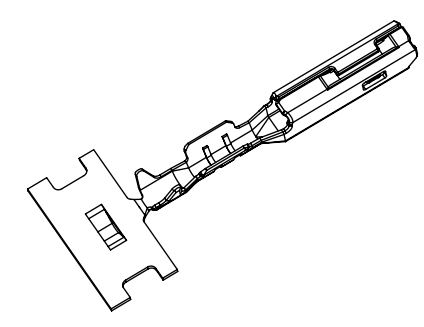
IF ELECTRICAL CONTINUITY PROBE TOUCHES SPRING MEMBER USE PROBING AS SHOWN IN FIG. 2

SYMBOLS		THIS DRAWING CONTAINS INFORMATION THAT IS PROPRIETARY TO MOLEX ELECTRONIC TECHNOLOGIES, LLC AND SHOULD NOT BE USED WITHOUT WRITTEN PERMISSION	
DIMENSION UNITS	SCALE	CURRENT REV DESC:	
$\nabla = 0$	mm	5:1	
$\nabla = 0$	GENERAL TOLERANCES (UNLESS SPECIFIED)		
$\nabla = 0$	ANGULAR TOL $\pm 3.0^\circ$		
$\nabla = 0$	4 PLACES	$\pm$	
$\nabla = 0$	3 PLACES	$\pm$	
$\nabla = 0$	2 PLACES	$\pm 0.10$	
$\nabla = 0$	1 PLACE	$\pm 0.3$	
$\nabla = 0$	0 PLACES	$\pm$	
$\nabla = 0$	DRAFT WHERE APPLICABLE MUST REMAIN WITHIN DIMENSIONS		
$\nabla = 0$	THIRD ANGLE PROJECTION	DRAWING	SERIES
		C-SIZE	33012
		EC NO: 645050	
		DRWN: BSKANTHARAJU 2020/09/03	
		CHK'D: JCUATACERVAN 2020/09/18	
		APPR: JCUATACERVAN 2020/09/18	
		INITIAL REVISION:	
		DRWN: LPULLIAM 2005/06/21	
		APPR: BMOSEY 2005/06/22	
DOCUMENT NUMBER		DOC TYPE	DOC PART
SD-33012-002		PSD	001
MATERIAL NUMBER		CUSTOMER	SHEET NUMBER
SEE TABLE		GENERAL MARKET	4 OF 5

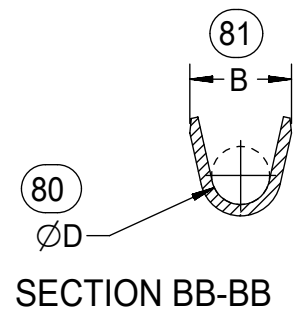
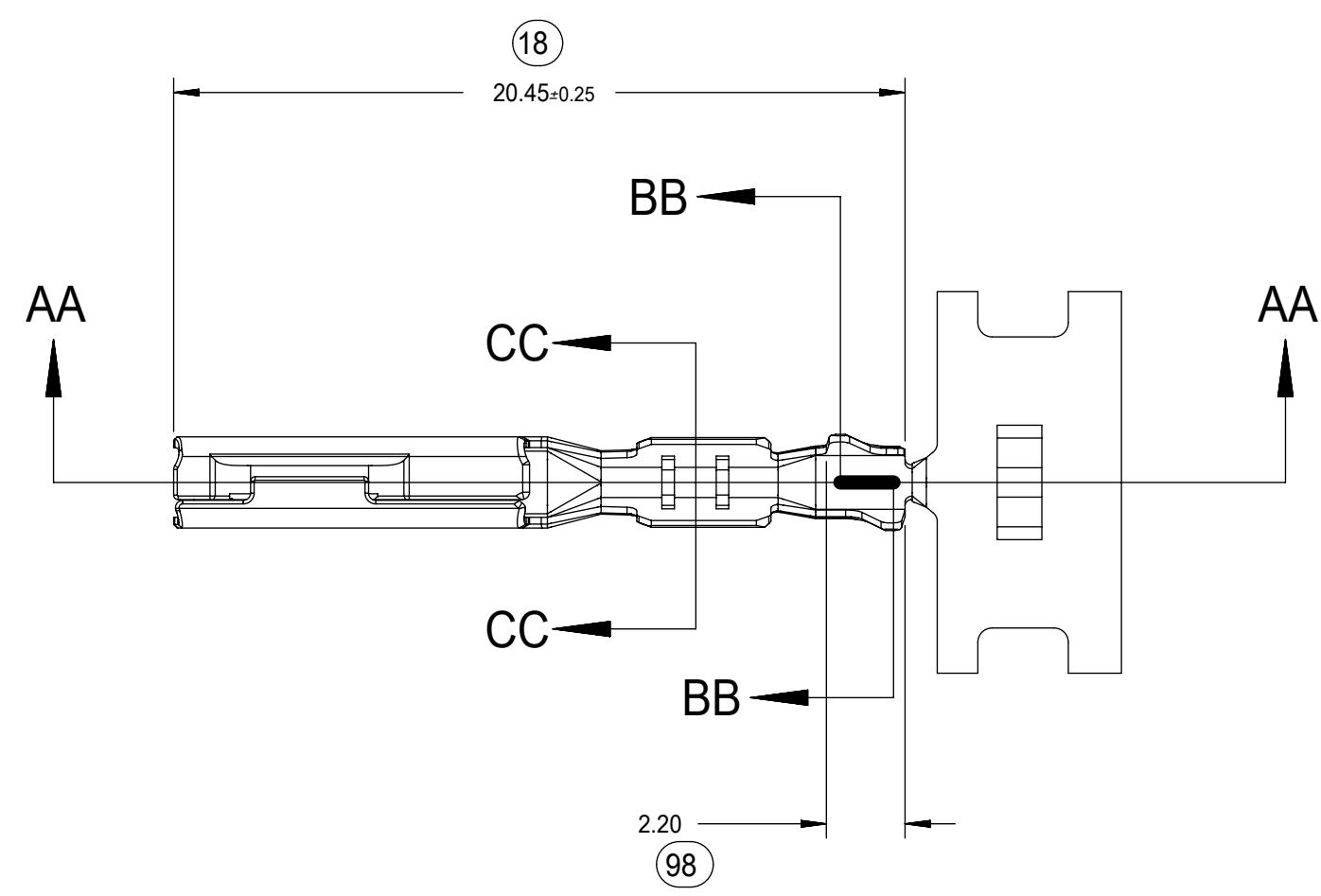
**molex**

MX150 RECEPTACLE TERMINAL

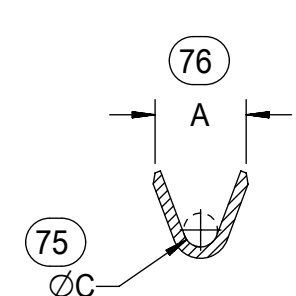
PRODUCT CUSTOMER DRAWING



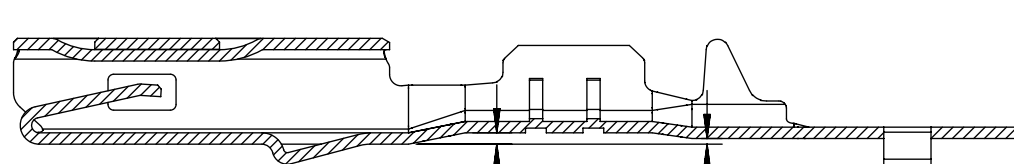
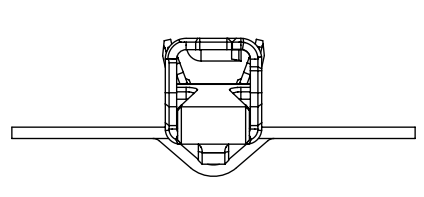
ISO VIEW  
SCALE 2:1



SECTION BB-BB



SECTION CC-CC



SECTION AA-AA  
M3 GRIP CODE TERMINAL  
SEE TABLE (SHEET 2) FOR PART NUMBERS

CARRIER BUMP DIRECTION  
POINTS DOWN FOR TIN PLATED TERMINAL  
POINTS UP FOR PRECIOUS METAL PLATED TERMINAL

<b>SYMBOLS</b> ▽ = 0 ▽ = 0 ▽ = 0 ▽ = 0 ▽ = 0 ▽ = 0 ▽ = 0 ▽ = 0 ▽ = 0 ▽ = 0	THIS DRAWING CONTAINS INFORMATION THAT IS PROPRIETARY TO MOLEX ELECTRONIC TECHNOLOGIES, LLC AND SHOULD NOT BE USED WITHOUT WRITTEN PERMISSION		CURRENT REV DESC:		 MX150 RECEPTACLE TERMINAL PRODUCT CUSTOMER DRAWING						
	DIMENSION UNITS	SCALE	EC NO: 645050					DOCUMENT NUMBER	DOC TYPE	DOC PART	REVISION
	mm	5:1	DRWN: BSKANTHARAJU	2020/09/03				SD-33012-002	PSD	001	D
	GENERAL TOLERANCES (UNLESS SPECIFIED)		CHK'D: JCUATACERVAN		INITIAL REVISION:		MATERIAL NUMBER	CUSTOMER	SHEET NUMBER		
	ANGULAR TOL ± 3.0°		APPR: JCUATACERVAN		DRWN: LPULLIAM		SEE TABLE	GENERAL MARKET	5 OF 5		
	4 PLACES ±		2020/09/18		APPR: BMOSE						
	3 PLACES ±				2005/06/21						
	2 PLACES ± 0.10				2005/06/22						
	1 PLACE ± 0.3				THIRD ANGLE PROJECTION						
	0 PLACES ±				DRAWING						
DRAFT WHERE APPLICABLE MUST REMAIN WITHIN DIMENSIONS		C-SIZE		SERIES							
		33012									

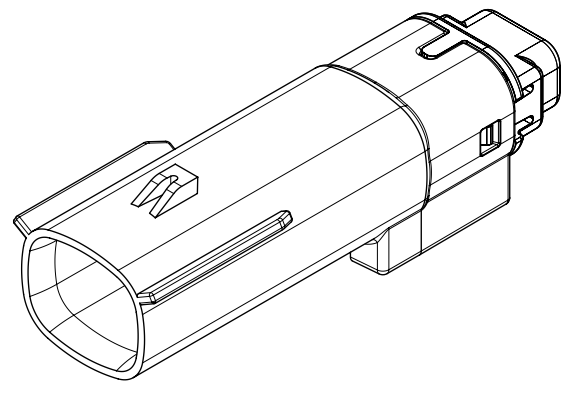
PRODUCTS AND PACKAGING SPECIFICATION: QLE13-099000-300  
 e. DATA MUST BE SUBMITTED UNDER THE MOLEX PART NUMBER TO IMDS  
 (COMPANY ID#13255)

2. DESIGN - MATERIALS:

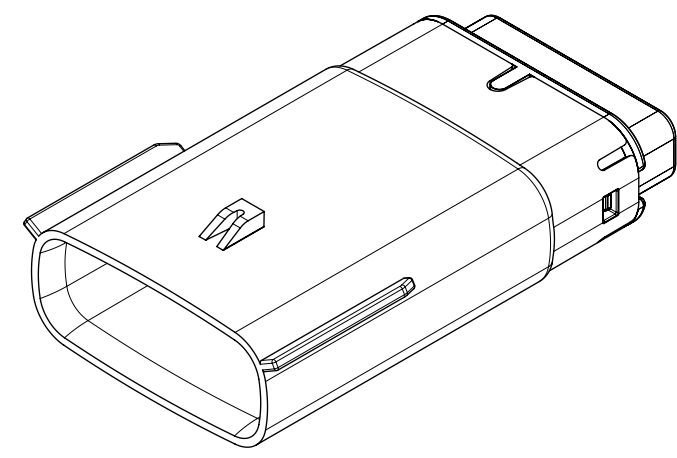
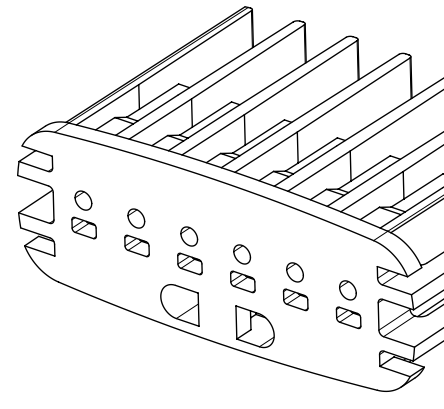
- a. FOR BILL OF MATERIALS SEE:
  - STANDARD CONFIGURATION: SD-33481-0002
  - UL V0 CONFIGURATION: SD-160106-0002

3. DESIGN - GEOMETRY:

- a. THE 3-D CAD DATA IS BASIC (WITHOUT TOLERANCE) AND MASTER FOR THIS PART WITH THE EXCEPTION OF UNDERLINED DIMENSIONS. DIMENSIONAL INFORMATION NOT SHOWN ON THIS DRAWING IS DEFINED BY THE DATA FILE AT ITS LATEST REVISION.
- b. GEOMETRIC DIMENSIONS AND TOLERANCES PER ASME Y14.5M-2009
- c. EDGES AND UNDIMENSIONED DETAILS PER ISO13715
- d. CORNERS SHOWN AS SHARP TO BE R 0.2 MAX.
- e. LETTERING SHALL BE 0.15 MAX RAISED IN 0.25 MAX RECESS PAD. THIS INCLUDES RECYCLING CODE, CAVITY ID, VENDOR IDENTIFICATION, AND CUSTOMER MATERIAL NUMBER.
- f. VISUAL DEFECTS SHALL MEET COSMETIC STANDARD PS-45499-002 (Class B).
- g. LASER MARKING:
  1. PART NUMBER
  2. DAY OF THE YEAR
  3. SHIFT
  4. YEAR
 FOR ADDITIONAL INFORMATION SEE SECTION 5 UNDER PROCEDURES IN ES-34735-008.



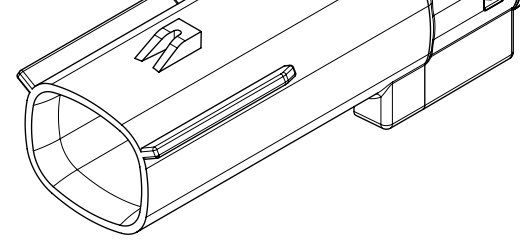
1X2



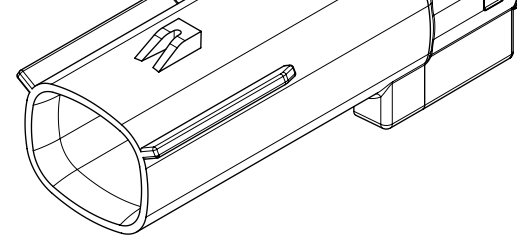
1X6

SYMBOLS	THIS D
	= 0 MM
	= 0 GEN (U
	= 0 ANGU
	= 0 4 PLA
	= 0 3 PLA
	= 0 2 PLA
	= 0 1 PLA
	= 0 0 PLA
	= 0 DRAI
	= 0 v

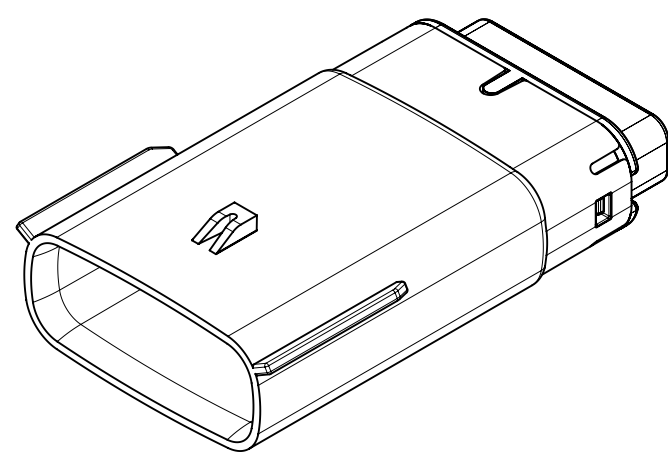
DOCUMENT STATUS	P1	RELEASE DATE	2018/10/04	15:02:02
-----------------	----	--------------	------------	----------



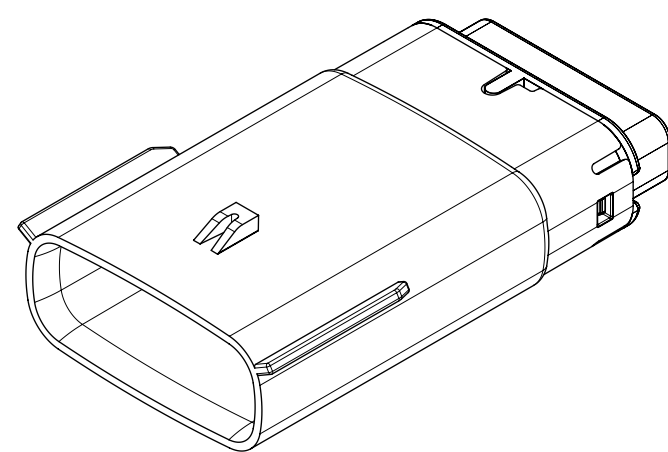
1x2 - STD



1X2 - UL V0\*



1x6 - STD



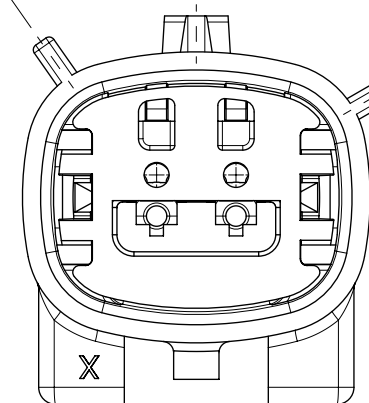
1x6 - UL V0\*

H  
G  
F  
E  
D  
C  
B  
A

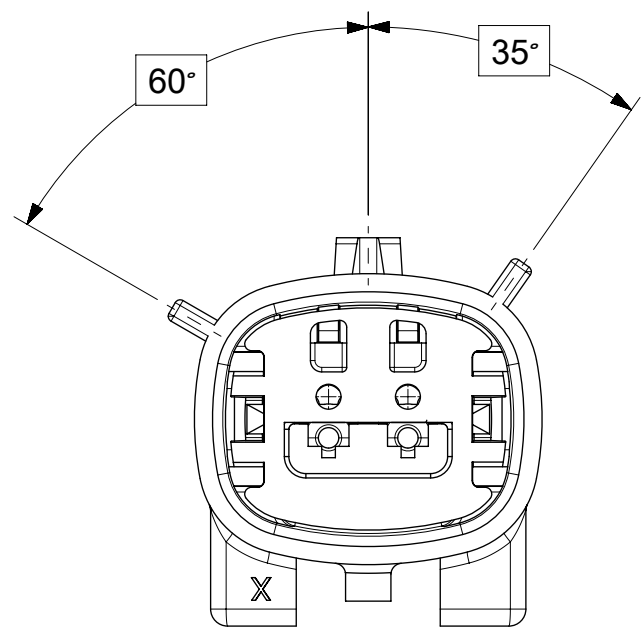
SYMBOLS		THIS D
		DIMENS
	= 0	MM
	= 0	GEN
	= 0	(U
	= 0	ANGU
	= 0	4 PLA
	= 0	3 PLA
	= 0	2 PLA
	= 0	1 PLA
	= 0	0 PLA
	= 0	DRA
	= 0	v

DOCUMENT STATUS	P1	RELEASE DATE	2018/10/04	15:02:02
-----------------	----	--------------	------------	----------

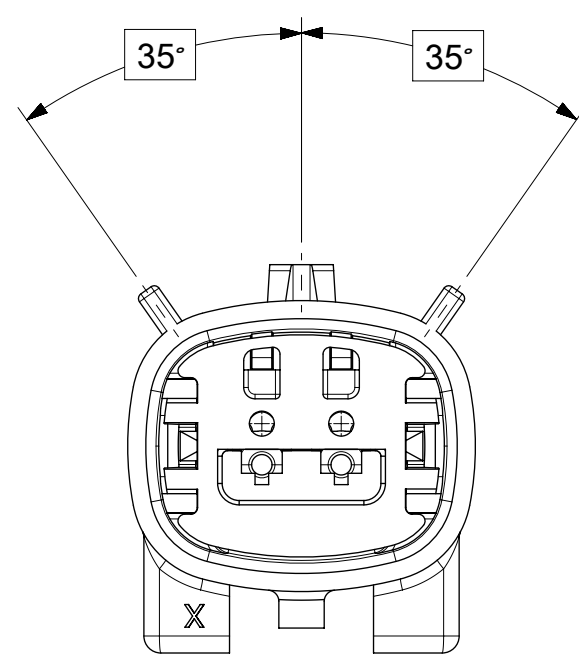
H  
G  
F  
E  
D  
C  
B  
A



KEY B



KEY C



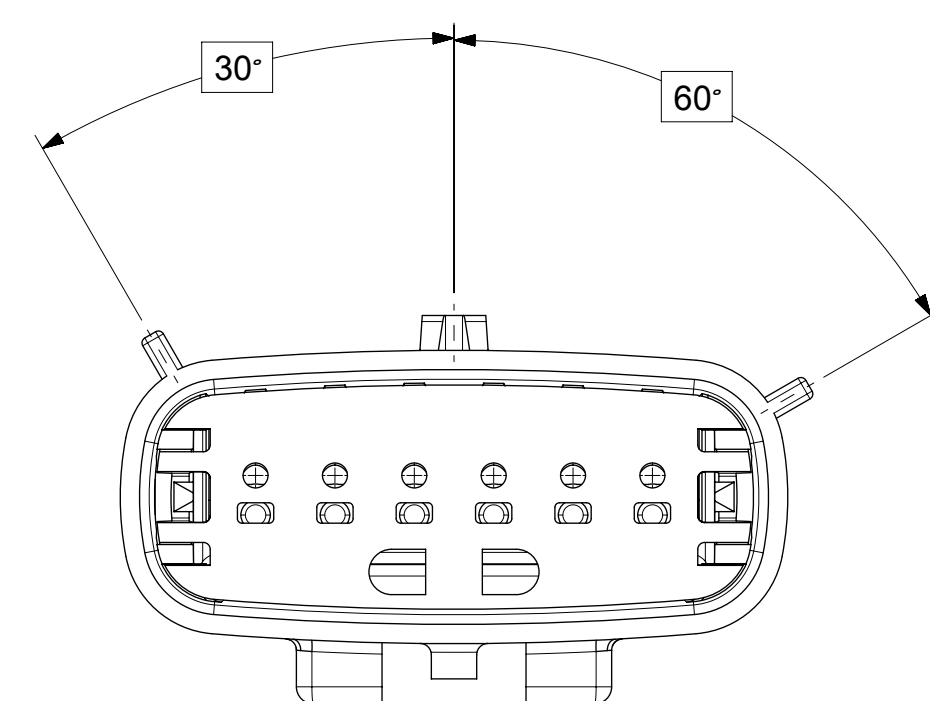
KEY D

SYMBOLS	THIS D DIMENS
	= 0 MM
	= 0 GEN (U
	= 0 ANGU
	= 0 4 PLA
	= 0 3 PLA
	= 0 2 PLA
	= 0 1 PLA
	= 0 0 PLA
	= 0 DRAI
	= 0 v

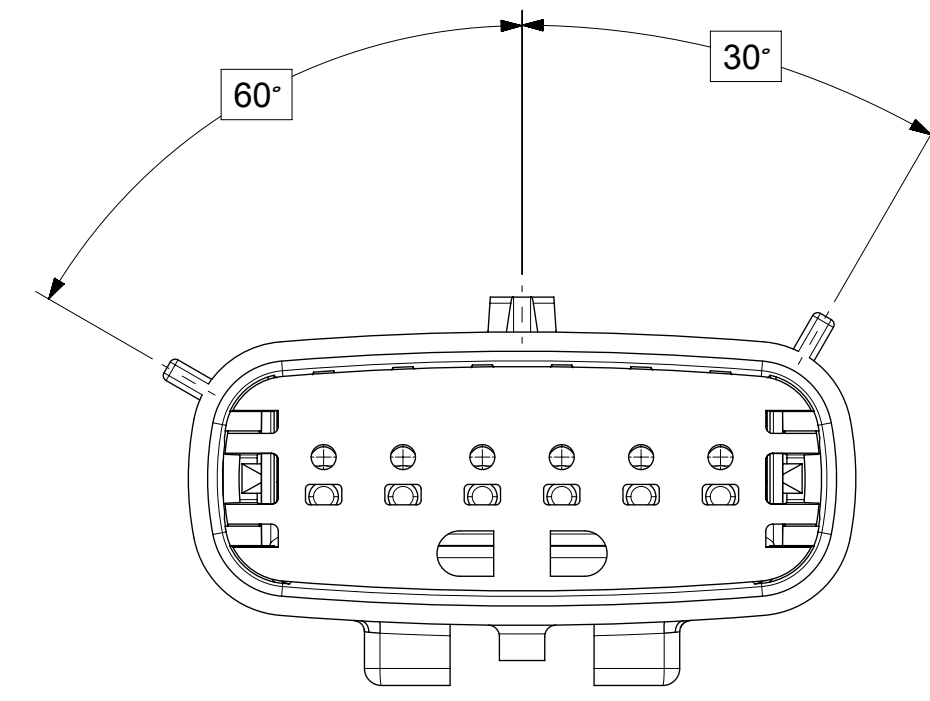
DOCUMENT STATUS	P1	RELEASE DATE	2018/10/04	15:02:02
-----------------	----	--------------	------------	----------



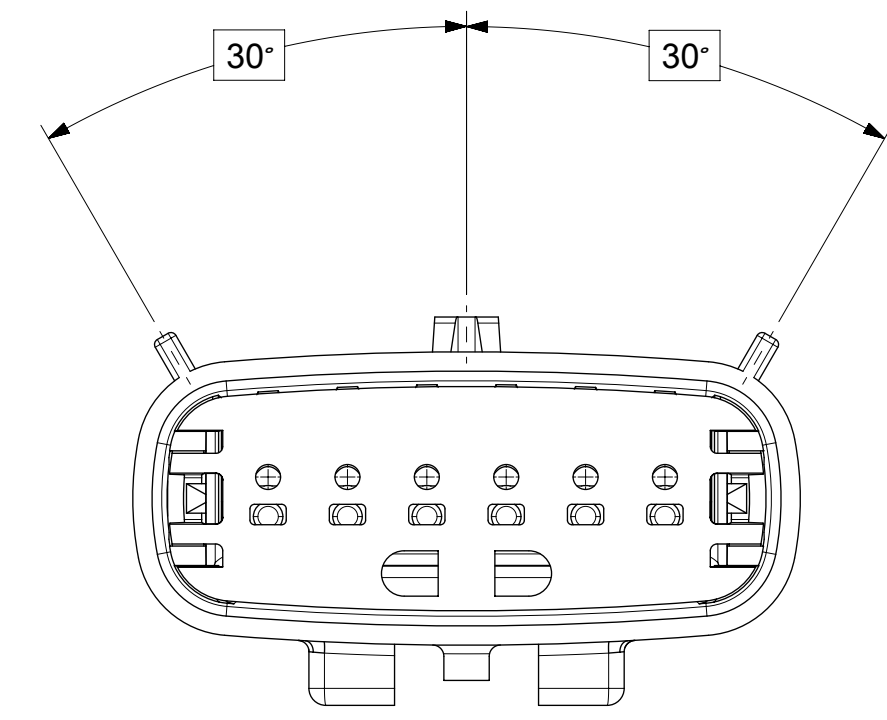
H  
G  
F  
E  
D  
C  
B  
A



KEY B



KEY C

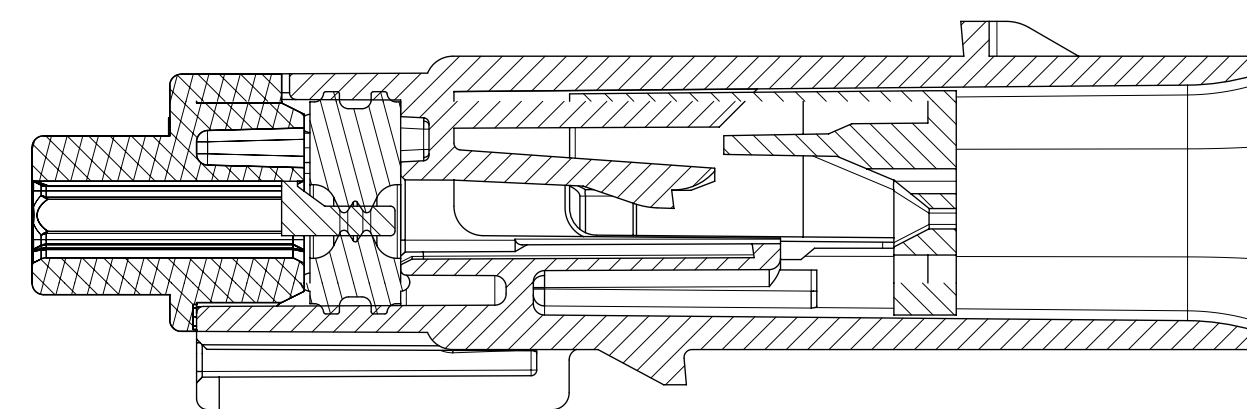
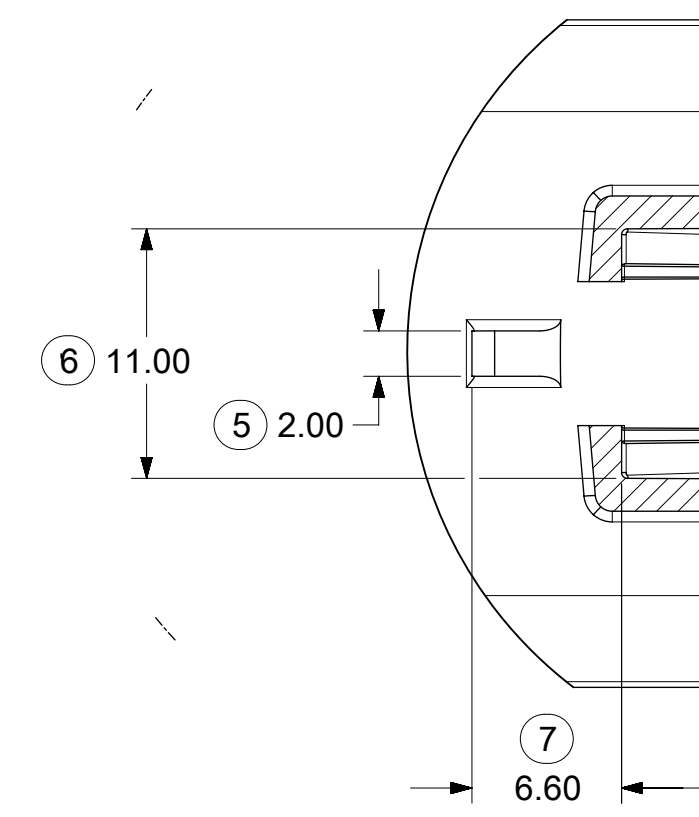
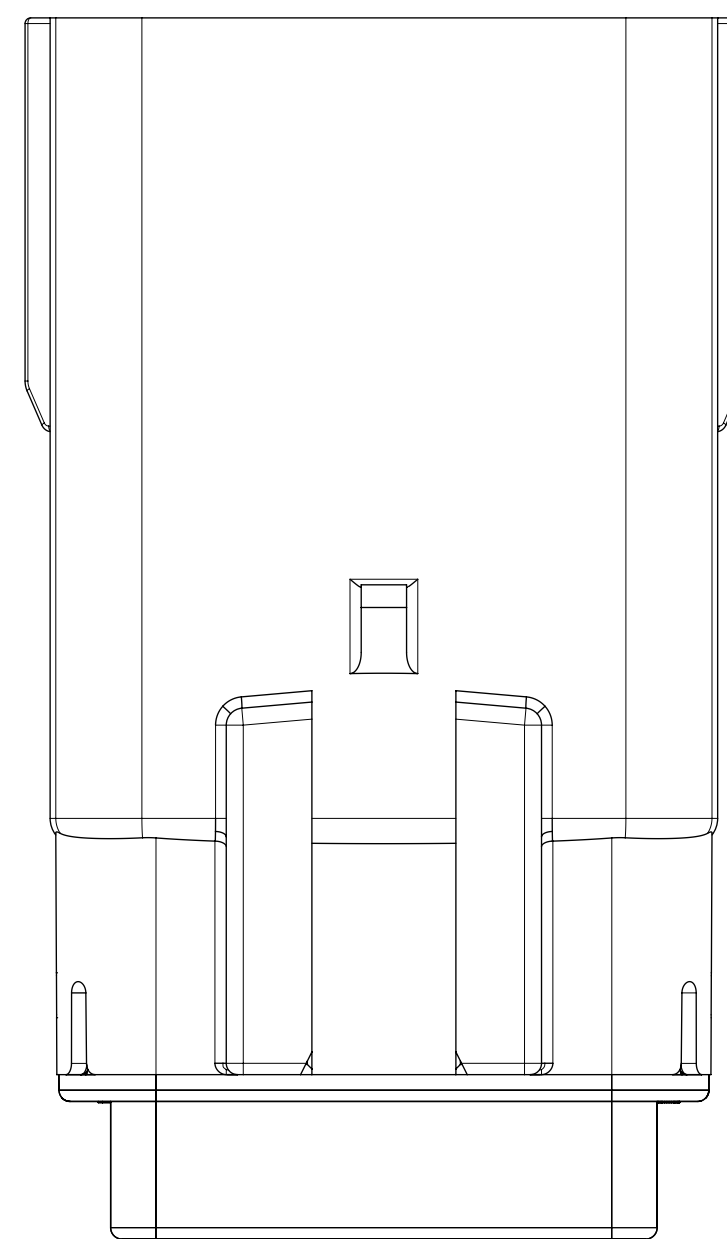
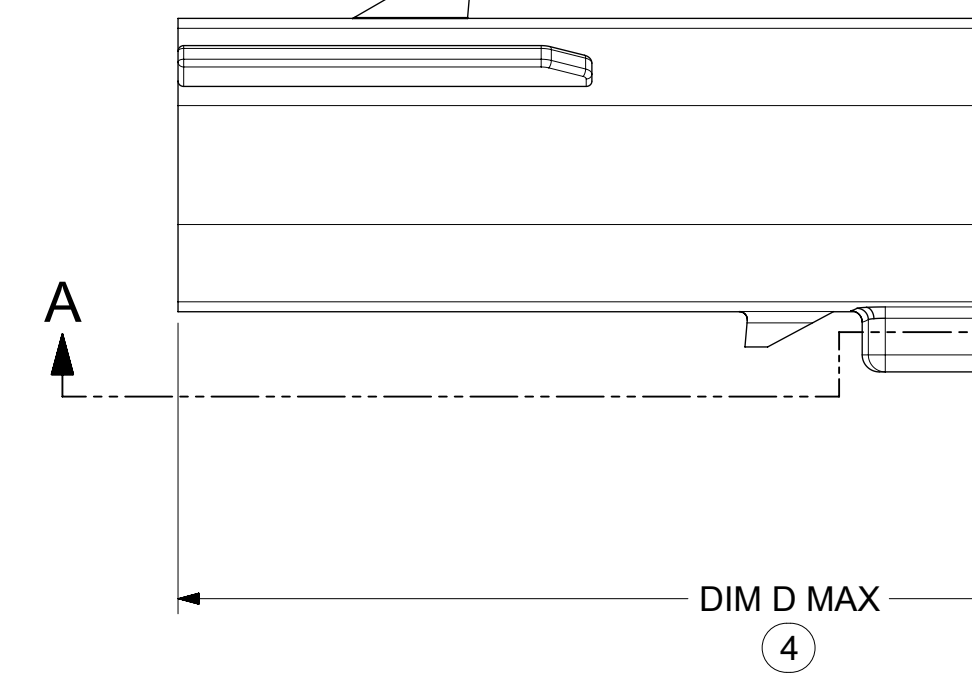
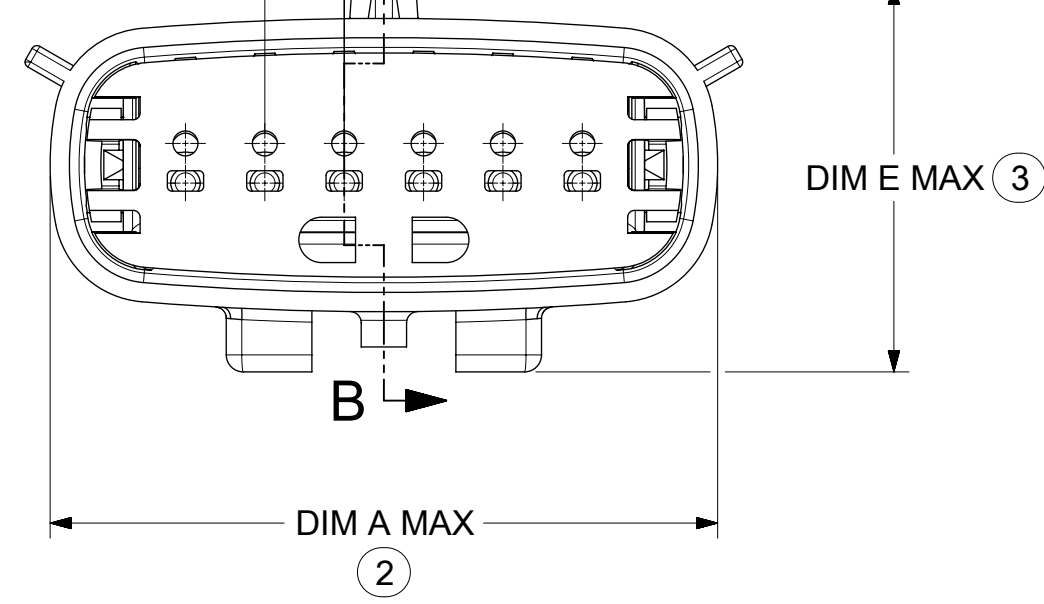
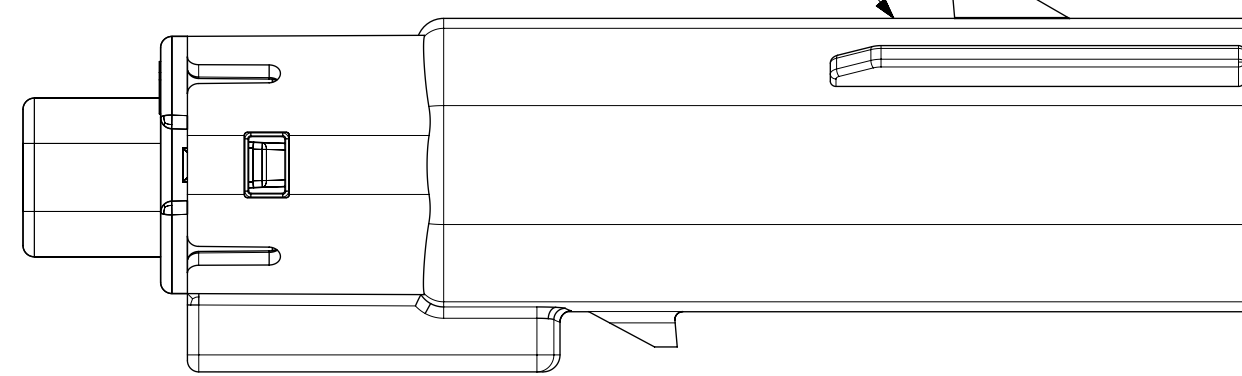


KEY D

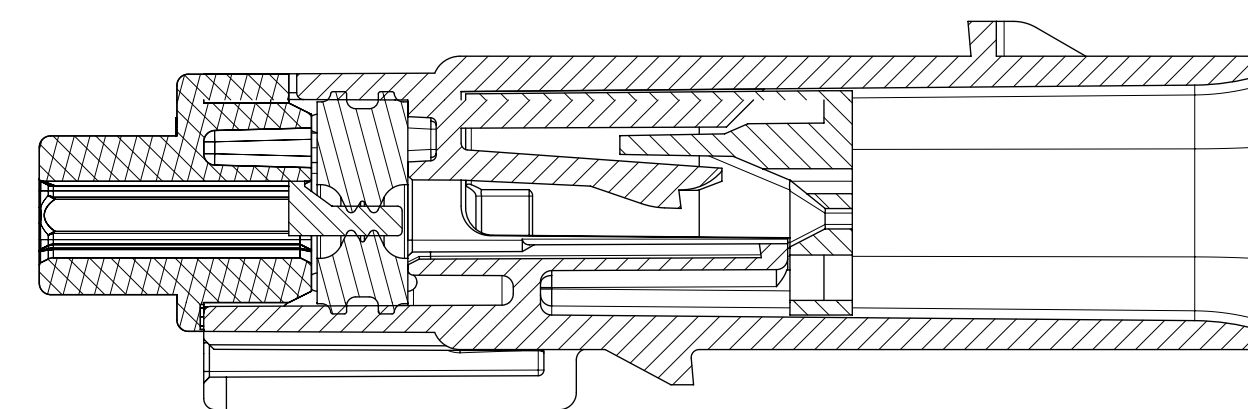
SYMBOLS	THIS D DIMENS
	= 0 MM
	= 0 GEN (U
	= 0 ANGU
	= 0 4 PLA
	= 0 3 PLA
	= 0 2 PLA
	= 0 1 PLA
	= 0 0 PLA
	= 0 DRAI
	= 0 v

DOCUMENT STATUS	P1	RELEASE DATE	2018/10/04	15:02:02
-----------------	----	--------------	------------	----------

H  
G  
F  
E  
D  
C  
B  
A



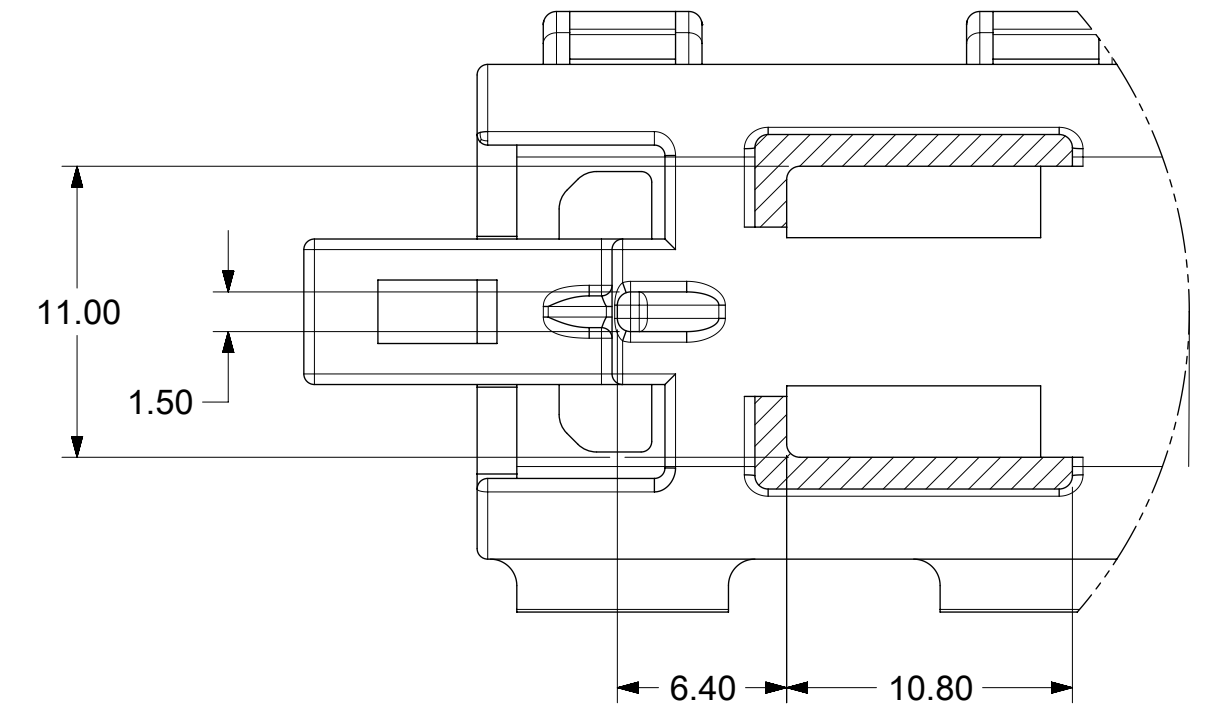
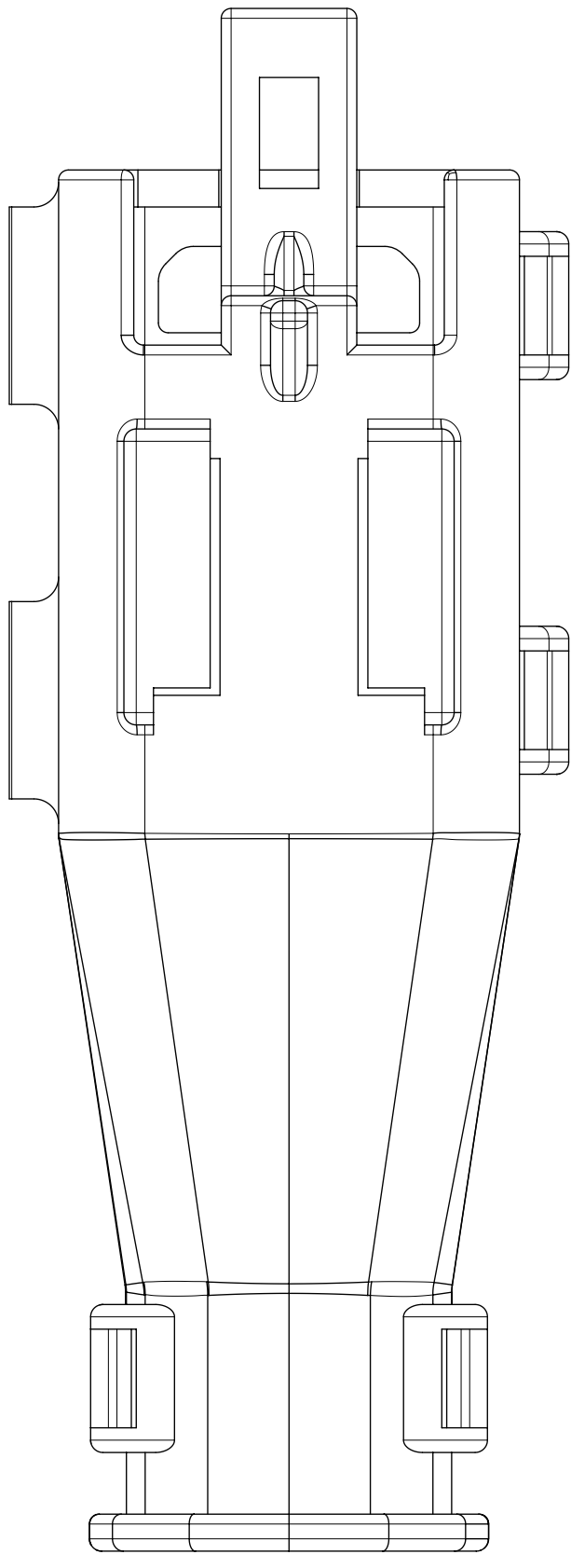
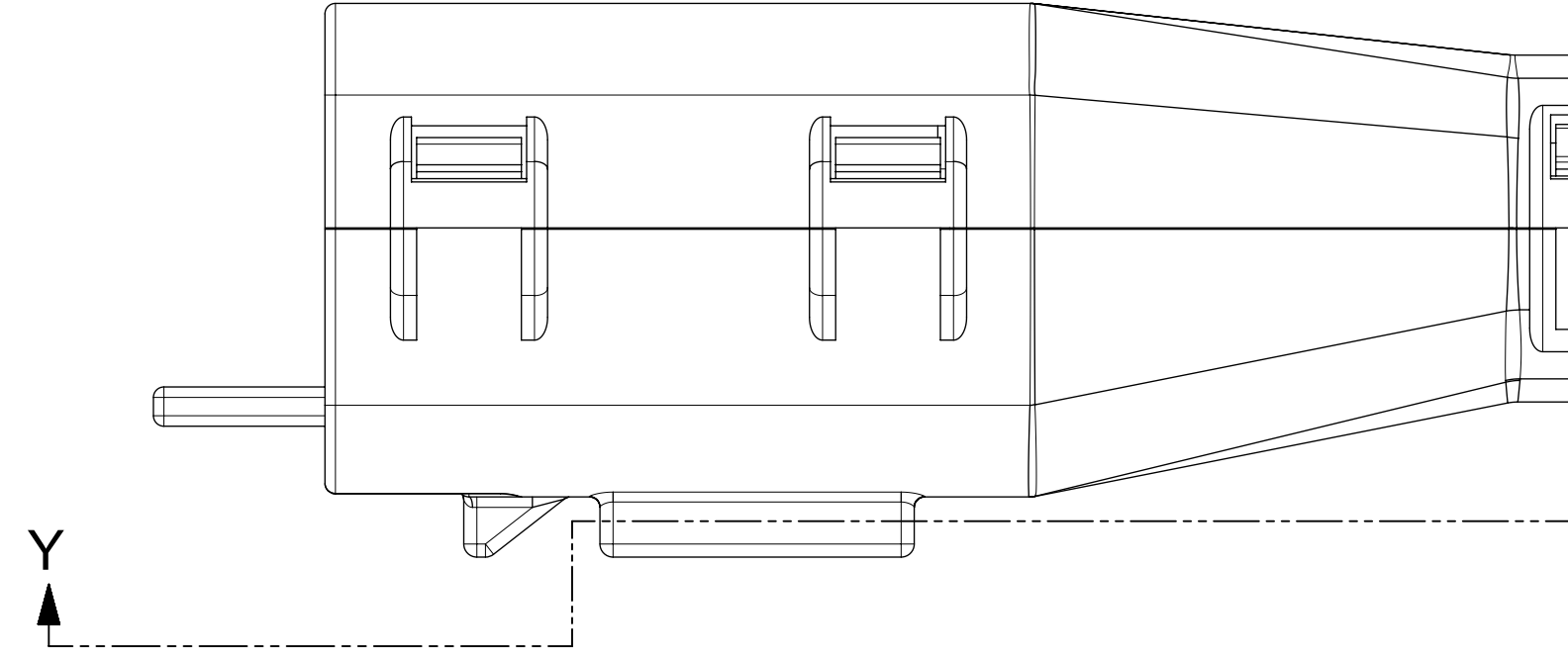
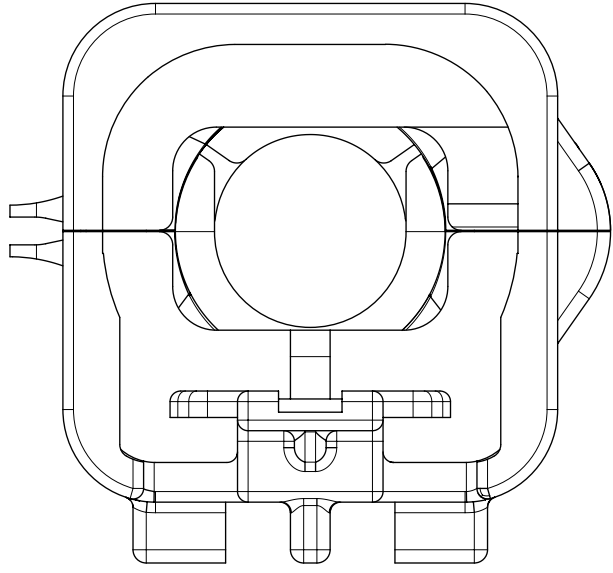
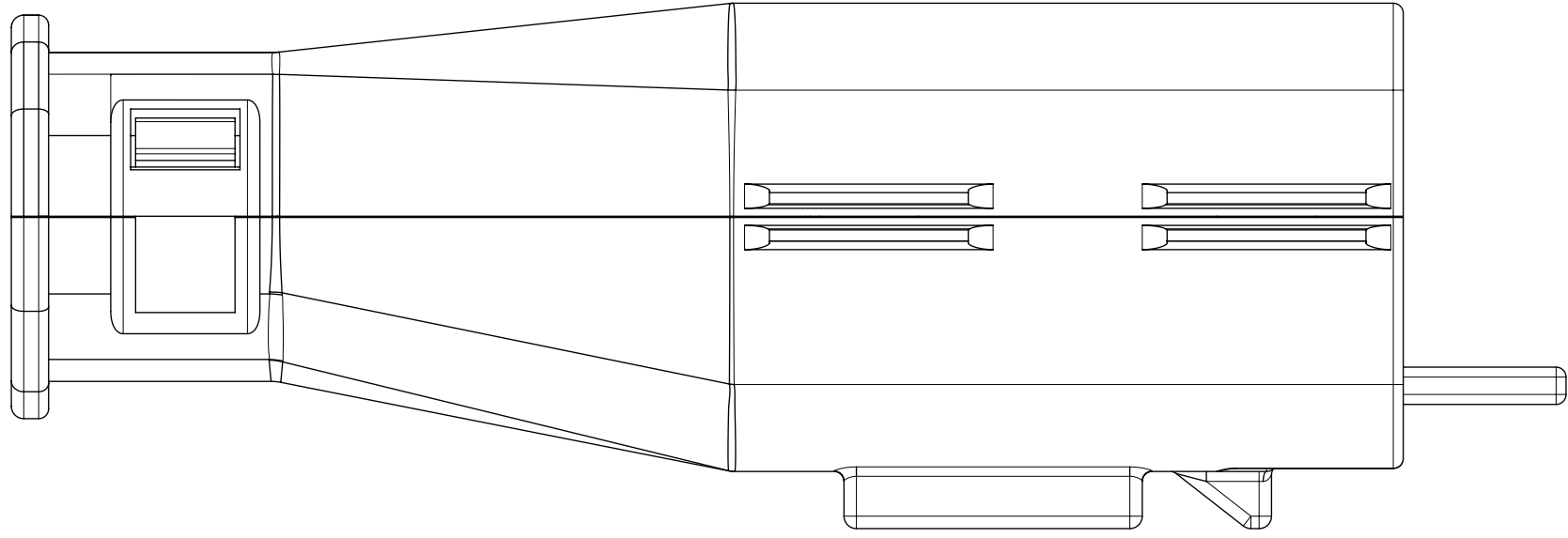
PRIMARY LOCK REINFORCEMENT (PLR) SHOWN  
IN PRE-STAGED POSITION  
SECTION B-B



PRIMARY LOCK REINFORCEMENT (PLR) SHOWN  
IN FINAL-LOCK POSITION  
SECTION Z-Z

SYMBOLS	THIS DIMENS
	= 0 MM
	= 0 GEN (U
	= 0 ANGU
	= 0 4 PLA
	= 0 3 PLA
	= 0 2 PLA
	= 0 1 PLA
	= 0 0 PLA
	= 0 DRA
	= 0 v

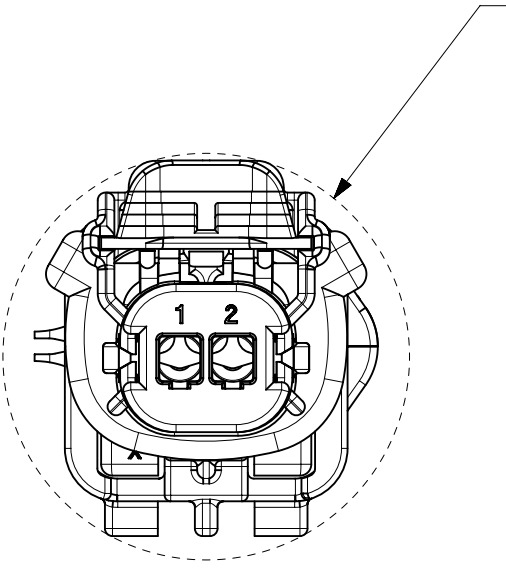
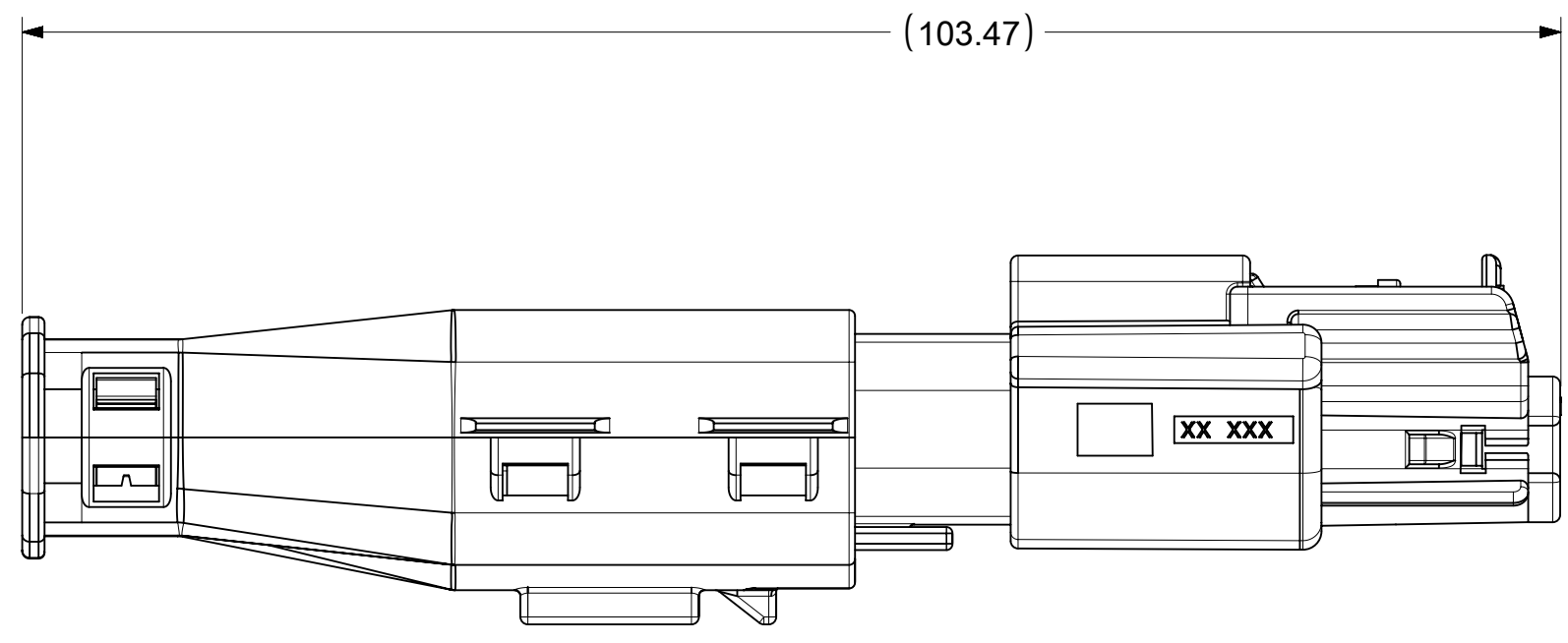
H  
G  
F  
E  
D  
C  
B  
A



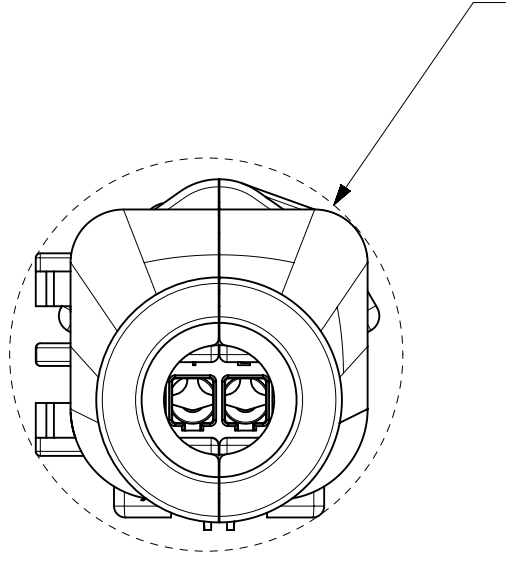
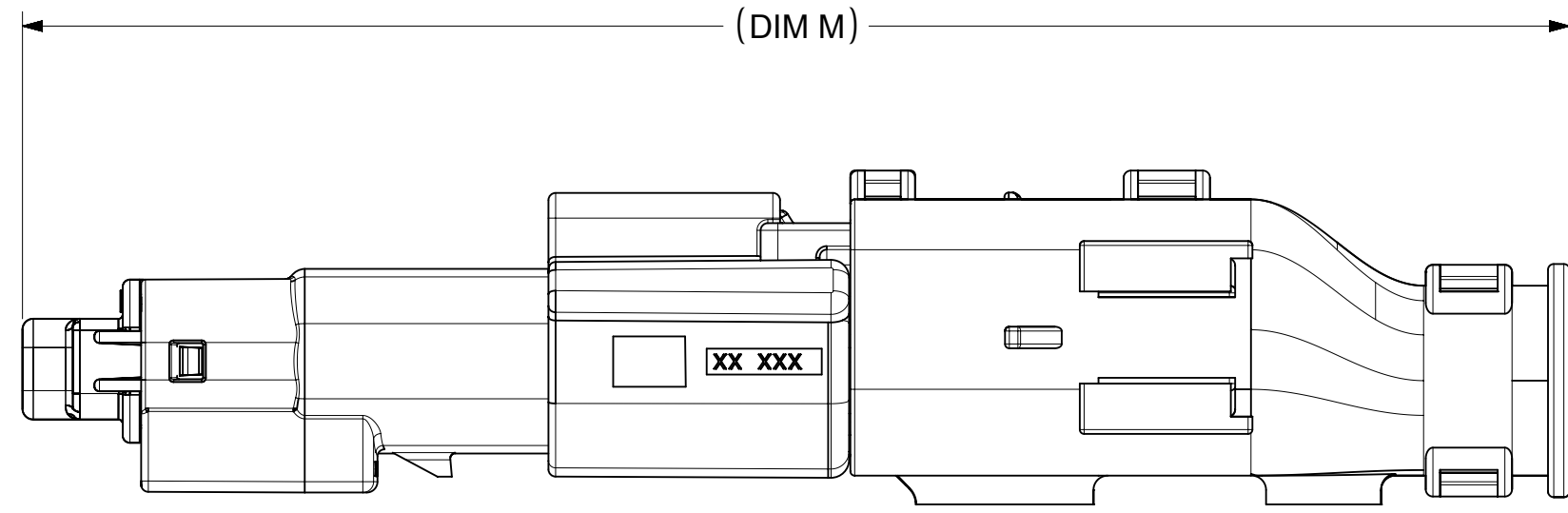
PARTIAL Y-Y  
SCALE 3.5:1

SYMBOLS	THIS D	DIMENS
	= 0	MM
	= 0	GEN
	= 0	(U
	= 0	ANGU
	= 0	4 PLA
	= 0	3 PLA
	= 0	2 PLA
	= 0	1 PLA
	= 0	0 PLA
	= 0	DRAI
	= 0	v

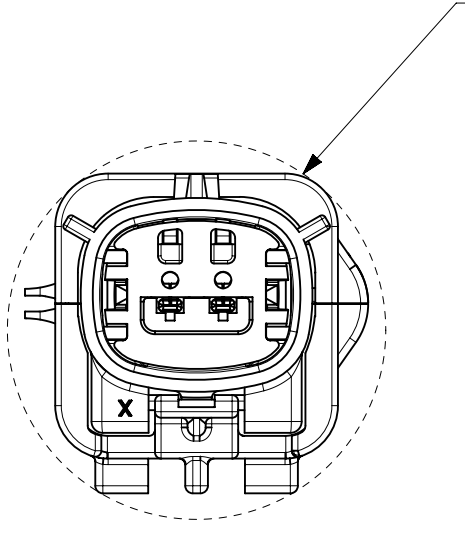
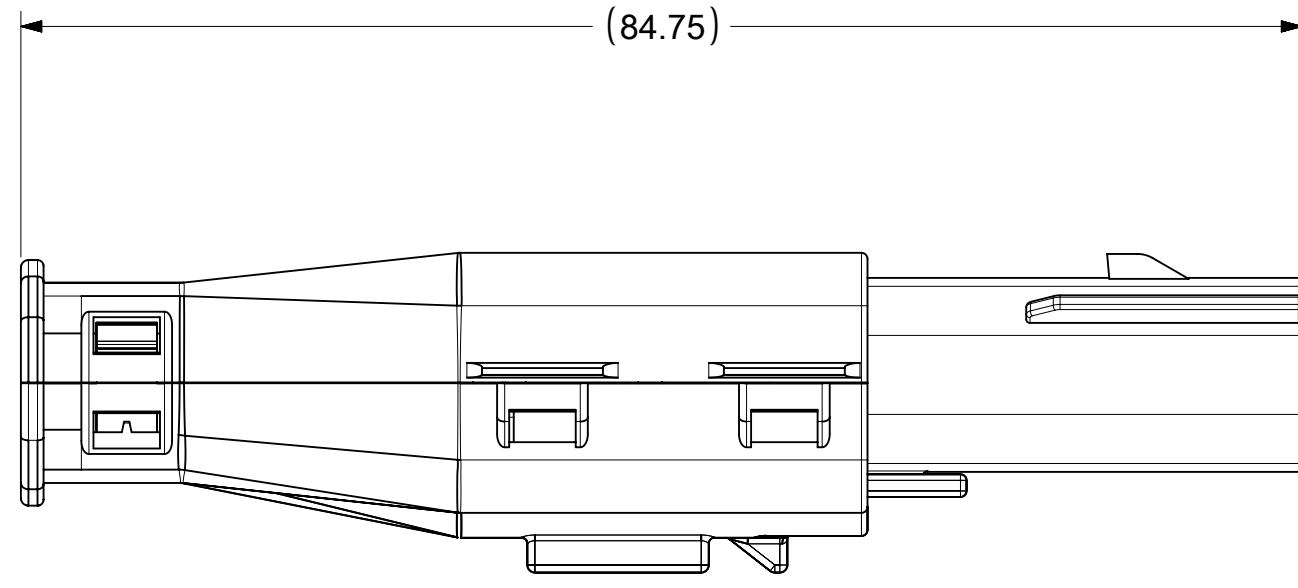
H  
G  
F  
E  
D  
C  
B  
A



OVERALL MATED SYSTEM WITH BLADE BACKSHELL



OVERALL MATED SYSTEM WITH RECEPTACLE BACKSHELL



BLADE SEALED ASSEMBLY WITH BLADE BACKSHELL

SYMBOLS	THIS D
	= 0 MM
	= 0 GEN (U
	= 0 ANGU
	= 0 4 PLA
	= 0 3 PLA
	= 0 2 PLA
	= 0 1 PLA
	= 0 0 PLA
	= 0 DRAI
	= 0 v

DOCUMENT STATUS	P1	RELEASE DATE	2018/10/04	15:02:02
-----------------	----	--------------	------------	----------

## X-ON Electronics

Largest Supplier of Electrical and Electronic Components

*Click to view similar products for [Automotive Connectors](#) category:*

*Click to view products by [Molex](#) manufacturer:*

Other Similar products are found below :

[003-018-000](#) [60403001](#) [60993906-B](#) [M902-2131](#) [M902-2161](#) [72.330.1035.1](#) [73.353.4028.0](#) [F119300-B](#) [F166900](#) [F258300-B](#) [F358300-B](#)  
[F407400](#) [F444110](#) [F487000](#) [F509500B-B](#) [827153-1](#) [8N1515-32-24P](#) [9-1326729-8](#) [925474-1](#) [928905-1](#) [964562-4](#) [968782-1](#) [GT17SA-8DS-](#)  
[HU](#) [98891-1012](#) [98947-1016](#) [12004475-L](#) [12010290](#) [12010309-B](#) [12015454](#) [12020219-B](#) [12020308](#) [12041318-B](#) [12052225-L](#) [12052466](#)  
[12059125](#) [12064869](#) [12004327-B](#) [12010503-B](#) [12015308](#) [12015384](#) [12015909](#) [1-21030-1](#) [12041254](#) [12041318](#) [12047946-B](#) [12047957](#)  
[12047957-L](#) [12059473](#) [12066261](#) [12110546](#)