



**BOM AND PIN OUT SHEET**

ASSEMBLY DESCRIPTION	ASSEMBLY PART NUMBER	COMPONENT							BLOCKED TERMINALS																	STATUS	COMMENTS					
		THE PRESENCE OF AN ABBREVIATION INDICATES THE PRESENCE OF THAT COMPONENT.							CAVITY WITH A NUMBER INDICATES BLOCKED TERMINAL POSITION CAVITY WITHOUT A NUMBER INDICATES OPEN TERMINAL POSITION																							
		OUTER HOUSING KEY/COLOR	INNER HOUSING	PLR	LEVER	LEVER ARM (x/2)	MAT SEAL	RING SEAL																								
GPEC RCPT CONN 95 CKT END LVR KEY 1/75	349920008	1-BLACK	IH	PLR	LE	LA	M	R	1	-	3	-	5	-	7	-	-	10	-	-	-	-	15	-	-	78	-	-				
									16	-	-	-	-	-	-	-	-	-	-	-	-	-	-	-	-	-	-	-	-	-	-	
									-	-	-	-	-	-	-	-	-	-	-	-	-	-	-	-	-	41	-	-	-	-	-	-
									46	-	48	-	-	-	-	-	-	-	-	-	-	-	-	-	-	56	-	-	-	-	-	-
									61	-	63	64	-	-	-	67	68	69	-	-	-	-	-	-	-	-	-	-	-	74	75	-
GPEC RCPT CONN 95 CKT END LVR KEY 1/76	349920009	1-BLACK	IH	PLR	LE	LA	M	R	1	-	3	-	5	-	7	-	-	10	-	-	-	-	-	-	-	-	-	-				
									16	-	-	-	-	-	-	-	-	-	-	-	-	-	-	-	-	-	-	-	-	-		
									-	-	-	-	-	-	-	-	-	-	-	-	-	-	-	-	-	41	-	-	-	-	-	-
									46	-	48	-	-	-	-	-	-	-	-	-	-	-	-	-	-	56	-	-	-	-	-	-
									61	-	63	64	-	-	66	67	68	69	-	-	-	-	-	-	-	-	-	-	-	74	75	-
GPEC RCPT CONN 95 CKT END LVR KEY 1/80	349920010	1-BLACK	IH	PLR	LE	LA	M	R	1	-	3	-	5	-	7	-	-	10	-	-	-	-	-	-	-	-	-	-				
									16	-	-	-	-	-	-	-	-	-	-	-	-	-	-	-	-	-	-	-	-	-		
									-	-	-	-	-	-	-	-	-	-	-	-	-	-	-	-	-	41	-	-	-	-	-	-
									46	-	48	-	-	-	-	-	-	-	-	-	-	-	-	-	-	56	-	-	-	-	-	-
									61	-	63	64	-	-	67	-	69	-	-	-	-	-	-	-	-	-	-	-	-	-	-	-
GPEC RCPT CONN 95 CKT END LVR KEY 1/79	349920011	1-BLACK	IH	PLR	LE	LA	M	R	1	-	-	-	-	-	-	-	-	-	-	-	-	-	15	-	-	78	-	-				
									16	-	-	-	-	-	22	-	-	-	-	-	-	-	-	-	-	-	-	-	-	-		
									-	-	-	-	-	-	-	-	-	-	-	-	-	-	-	-	-	-	-	-	-	-	-	
									-	-	-	-	-	-	-	-	-	-	-	-	55	56	-	-	-	-	-	-	-	-	-	-
									-	62	63	64	-	-	67	68	69	-	-	-	-	-	-	-	-	-	-	-	-	74	75	-
GPEC RCPT CONN 95 CKT END LVR KEY 1/74	349920012	1-BLACK	IH	PLR	LE	LA	M	R	-	-	3	-	-	-	-	-	9	10	-	12	-	-	-	-	-	-	-	-				
									-	-	18	-	-	-	-	-	24	25	-	-	-	-	-	-	-	-	-	-	-	-	-	
									31	-	-	-	-	-	-	-	-	-	-	-	-	-	-	-	-	-	-	-	-	-	-	-
									-	47	48	-	-	-	-	-	-	-	-	-	-	-	-	-	-	56	-	-	-	-	-	-
									-	-	-	64	65	-	-	68	69	-	71	-	-	-	-	-	-	-	-	-	-	74	75	-
GPEC RCPT CONN 95 CKT END LVR KEY 1/83	349920013	1-BLACK	IH	PLR	LE	LA	M	R	1	-	-	-	-	-	-	-	-	-	-	-	-	-	-	-	-	78	-	-				
									16	-	-	-	-	-	-	-	-	-	-	-	-	-	-	-	-	-	-	-	-	-	-	
									-	-	-	-	-	-	-	-	-	-	-	-	-	-	-	-	-	-	-	-	-	-	-	-
									-	-	-	-	-	-	-	-	-	-	-	-	55	56	-	-	-	-	-	-	-	-	-	-
									-	62	63	64	-	-	67	68	69	-	-	-	-	-	-	-	-	-	-	-	-	-	-	-
GPEC RCPT CONN 95 CKT END LVR KEY 1/79	349920014	1-BLACK	IH	PLR	LE	LA	M	R	-	-	-	-	-	-	-	-	9	-	-	-	-	-	-	-	-	-	-	-				
									-	-	18	-	-	-	-	-	24	25	-	-	-	-	-	-	-	-	-	-	-	-	-	
									-	-	-	-	-	-	-	-	-	-	-	-	-	-	-	-	-	-	-	-	-	-	-	-
									-	47	48	-	-	-	-	-	-	-	-	-	-	-	-	-	-	56	-	-	-	-	-	-
									-	-	-	64	65	-	-	68	69	-	71	-	-	-	-	-	-	-	-	-	-	74	75	-
GPEC RCPT CONN 95 CKT END LVR KEY 1/82	349920015	1-BLACK	IH	PLR	LE	LA	M	R	-	-	-	-	-	-	-	-	9	-	-	-	-	-	-	-	-	-	-	-				
									-	-	18	-	-	-	-	-	24	25	-	-	-	-	-	-	-	-	-	-	-	-	-	
									-	-	-	-	-	-	-	-	-	-	-	-	-	-	-	-	-	-	-	-	-	-	-	-
									-	-	-	-	-	-	-	-	-	-	-	-	-	-	-	-	-	-	-	-	-	-	-	-
									-	-	-	64	65	-	-	68	69	-	71	-	-	-	-	-	-	-	-	-	-	74	75	-
GPEC RCPT CONN 95 CKT END LVR KEY 1/77	349920016	1-BLACK	IH	PLR	LE	LA	M	R	1	-	-	-	-	-	-	-	-	-	-	-	-	-	15	-	-	78	-	-				
									16	-	-	-	-	-	22	-	-	-	-	-	-	-	-	-	-	-	-	-	-	-	-	
									-	-	-	-	-	-	-	-	-	-	-	-	-	-	-	-	-	55	56	57	-	-	-	-
									-	62	63	64	-	66	67	68	69	-	-	-	-	-	-	-	-	-	-	-	-	74	75	-
									-	-	-	-	-	-	-	-	-	-	-	-	-	-	-	-	-	-	-	-	-	-	-	-
GPEC RCPT CONN 95 CKT END LVR KEY 1/67	349920017	1-BLACK	IH	PLR	LE	LA	M	R	-	-	3	-	-	-	-	-	9	10	-	12	-	-	15	-	-	78	-	-				
									-	-	18	-	-	-	-	-	24	25	-	-	-	-	-	-	-	-	-	-	-	30	-	
									31	-	-	-	-	-	-	-	-	-	-	-	-	-	-	-	-	-	-	-	-	-	-	-
									-	-	-	-	-	-	-	-	-	-	-	-	-	-	-	-	-	-	-	-	-	-	-	-
									-	62	63	64	65	-	-	68	69	70	71	72	73	74	75	-	-	-	-	-	-	-	-	-





**BOM AND PIN OUT SHEET**

ASSEMBLY DESCRIPTION	ASSEMBLY PART NUMBER	COMPONENT							BLOCKED TERMINALS																	STATUS	COMMENTS	
		THE PRESENCE OF AN ABBREVIATION INDICATES THE PRESENCE OF THAT COMPONENT.							CAVITY WITH A NUMBER INDICATES BLOCKED TERMINAL POSITION CAVITY WITHOUT A NUMBER INDICATES OPEN TERMINAL POSITION																			
		OUTER HOUSING KEY/COLOR	INNER HOUSING	PLR	LEVER	LEVER ARM (x/2)	MAT SEAL	RING SEAL																				
GPEC RCPT CONN 95 CKT TOP LVR KEY 4/51	349927005	4-BLACK	IH	PLR	LT	LA	M	R	-	-	3	4	5	-	-	-	9	-	-	12	13	-	15	-	77	78	79	-
									16	17	18	19	20	21	-	23	24	25	26	-	28	-	30	-	-	-	-	-
									-	-	-	-	-	-	-	38	-	-	-	-	-	44	-	-	-	-	-	-
									46	47	-	49	-	51	-	53	54	-	56	-	-	59	-	86	-	-	-	-
									61	-	-	-	-	66	67	68	69	70	71	-	73	74	75	91	-	-	-	-
GPEC RCPT CONN 95 CKT TOP LVR KEY 4/50	349927006	4-BLACK	IH	PLR	LT	LA	M	R	-	-	3	4	-	-	-	9	-	-	12	13	-	15	-	77	78	79	-	
									16	17	18	19	20	21	-	23	24	25	26	-	28	-	30	-	-	-	-	-
									-	-	-	-	-	-	-	38	-	-	-	-	43	44	45	-	-	-	-	-
									46	47	48	49	-	51	-	53	54	-	56	-	-	59	-	86	-	-	-	-
									61	-	-	-	-	66	67	68	69	70	71	-	73	74	-	91	-	-	-	-
GPEC RCPT CONN 95 CKT TOP LVR KEY 4/54	349927007	4-BLACK	IH	PLR	LT	LA	M	R	-	-	3	4	5	-	-	-	9	-	-	-	-	-	15	-	77	78	79	80
									16	17	18	19	20	-	-	23	24	25	26	-	28	-	-	-	-	-	-	-
									-	-	-	-	-	-	-	38	-	-	-	-	-	44	-	-	-	-	-	-
									46	47	-	49	-	51	-	-	54	-	56	-	-	59	-	86	-	-	-	-
									61	-	-	-	-	66	67	68	69	70	71	-	73	74	75	91	-	-	-	95
GPEC RCPT CONN 95 CKT TOP LVR KEY 4/46	349927008	4-BLACK	IH	PLR	LT	LA	M	R	-	-	3	4	-	-	-	9	-	-	12	13	-	15	-	77	78	79	80	
									16	17	18	19	20	21	-	23	24	25	26	-	28	-	30	-	-	-	-	85
									-	-	-	-	-	-	-	38	-	-	-	-	43	44	45	-	-	-	-	-
									46	47	48	49	-	51	-	53	54	-	56	-	-	59	-	86	-	-	-	-
									61	-	-	-	-	66	67	68	69	70	71	-	73	74	-	91	-	-	94	95
GPEC RCPT CONN 95 CKT TOP LVR KEY 4/45	349927009	4-BLACK	IH	PLR	LT	LA	M	R	-	-	3	4	-	6	7	8	9	-	-	12	13	-	15	-	77	78	79	80
									16	17	18	19	20	-	-	23	24	25	26	-	28	-	-	-	-	-	-	85
									-	-	-	-	-	-	-	38	-	-	41	-	43	44	45	-	-	-	-	-
									46	47	48	49	-	51	-	53	54	-	56	-	-	59	-	86	-	-	-	-
									61	-	-	-	-	66	67	68	-	70	71	-	73	74	-	91	-	-	94	95
GPEC RCPT CONN 95 CKT TOP LVR KEY 4/42	349927010	4-BLACK	IH	PLR	LT	LA	M	R	-	-	3	4	-	6	7	8	9	-	-	12	13	-	15	-	77	78	79	80
									16	17	18	19	20	21	-	23	24	25	26	-	28	-	30	-	-	-	-	85
									-	-	-	-	-	-	-	38	-	-	41	-	43	44	45	-	-	-	-	-
									46	47	48	49	-	51	-	53	54	-	56	-	-	59	-	86	-	-	-	-
									61	-	-	-	-	66	67	68	69	70	71	-	73	74	-	91	-	-	94	95
GPEC RCPT CONN 95 CKT TOP LVR KEY 4/47	349927011	4-BLACK	IH	PLR	LT	LA	M	R	-	-	3	4	5	-	-	-	9	-	-	12	13	-	15	-	77	78	79	80
									16	17	18	-	20	21	-	23	24	25	26	-	28	-	30	-	-	-	-	85
									-	-	-	-	-	-	-	38	-	-	-	-	43	44	45	-	-	-	-	-
									46	47	-	49	-	51	-	53	54	-	56	-	-	59	-	86	-	-	-	-
									61	-	-	-	-	66	67	68	69	70	71	-	73	74	-	91	-	-	94	95
GPEC RCPT CONN 95 CKT TOP LVR KEY 4/52	349927012	4-BLACK	IH	PLR	LT	LA	M	R	1	2	3	4	5	6	-	-	9	-	-	-	-	14	15	-	77	-	79	80
									-	17	18	19	20	-	-	23	24	25	-	-	28	-	-	-	-	-	-	85
									-	-	-	-	-	-	37	-	-	-	-	-	-	44	-	-	-	-	-	-
									46	-	48	49	-	51	-	-	-	-	56	-	-	59	-	86	-	-	-	-
									61	-	63	64	-	66	67	68	69	-	71	-	-	74	75	91	92	-	-	95
GPEC RCPT CONN 95 CKT END LVR KEY 5/95	349928001	5-BLACK	IH	PLR	LE	LA	M	R	-	-	-	-	-	-	-	-	-	-	-	-	-	-	-	-	-	-	-	-
									-	-	-	-	-	-	-	-	-	-	-	-	-	-	-	-	-	-	-	-
									-	-	-	-	-	-	-	-	-	-	-	-	-	-	-	-	-	-	-	-
									-	-	-	-	-	-	-	-	-	-	-	-	-	-	-	-	-	-	-	-
									-	-	-	-	-	-	-	-	-	-	-	-	-	-	-	-	-	-	-	-
GPEC RCPT CONN 95 CKT END LVR KEY 5/95	349928002	5-BLACK	IH	PLR	LE	LA	M	R	-	-	-	-	-	-	-	-	-	-	-	-	-	-	-	-	-	-	-	-
									-	-	-	-	-	-	-	-	-	-	-	-	-	-	-	-	-	-	-	-
									-	-	-	-	-	-	-	-	-	-	-	-	-	-	-	-	-	-	-	-
									-	-	-	-	-	-	-	-	-	-	-	-	-	-	-	-	-	-	-	-
									-	-	-	-	-	-	-	-	-	-	-	-	-	-	-	-	-	-	-	-



GPEC IV 95 WAY RECEPTACLE SEALED ASSEMBLY MAT SEAL

BOM AND PIN OUT SHEET

ASSEMBLY DESCRIPTION	ASSEMBLY PART NUMBER	COMPONENT							BLOCKED TERMINALS																	STATUS	COMMENTS																
		THE PRESENCE OF AN ABBREVIATION INDICATES THE PRESENCE OF THAT COMPONENT.							CAVITY WITH A NUMBER INDICATES BLOCKED TERMINAL POSITION CAVITY WITHOUT A NUMBER INDICATES OPEN TERMINAL POSITION																																		
		OUTER HOUSING KEY/COLOR	INNER HOUSING	PLR	LEVER	LEVER ARM (x/2)	MAT SEAL	RING SEAL																																			
GPEC RCPT CONN 95 CKT TOP LVR KEY 5/95	349929001	5-BLACK	IH	PLR	LT	LA	M	R	-	-	-	-	-	-	-	-	-	-	-	-	-	-	-	-	-	-	-	-	-	-	-	-	-	-	-	-	-	-	-	-	SALEABLE		
GPEC RCPT CONN 95 CKT TOP LVR KEY 5/51	349929002	5-BLACK	IH	PLR	LT	LA	M	R	-	-	3	4	-	-	-	-	9	-	-	12	13	-	15	-	-	-	-	-	-	-	-	-	-	-	-	-	-	77	78	-	80	SALEABLE	
									16	17	-	19	-	21	-	23	24	-	-	-	28	29	30	-	-	-	-	-	-	-	-	-	-	-	-	-	-	-	-	85			
									-	-	-	-	-	-	-	-	-	-	-	-	-	-	44	-	-	-	-	-	-	-	-	-	-	-	-	-	86	-	-	-	-		
									46	47	48	-	-	51	52	53	54	-	56	-	-	59	60	-	-	-	-	-	-	-	-	-	-	-	-	-	91	-	-	-	95		
GPEC RCPT CONN 95 CKT TOP LVR KEY 5/95	349929003	5-BLACK	IH	PLR	LT	LA	M	R	-	-	-	-	-	-	-	-	-	-	-	-	-	-	-	-	-	-	-	-	-	-	-	-	-	-	-	-	-	-	-	-	-	SALEABLE	
									-	-	-	-	-	-	-	-	-	-	-	-	-	-	-	-	-	-	-	-	-	-	-	-	-	-	-	-	-	-	-	-	-		
									-	-	-	-	-	-	-	-	-	-	-	-	-	-	-	-	-	-	-	-	-	-	-	-	-	-	-	-	-	-	-	-	-		
									-	-	-	-	-	-	-	-	-	-	-	-	-	-	-	-	-	-	-	-	-	-	-	-	-	-	-	-	-	-	-	-	-		









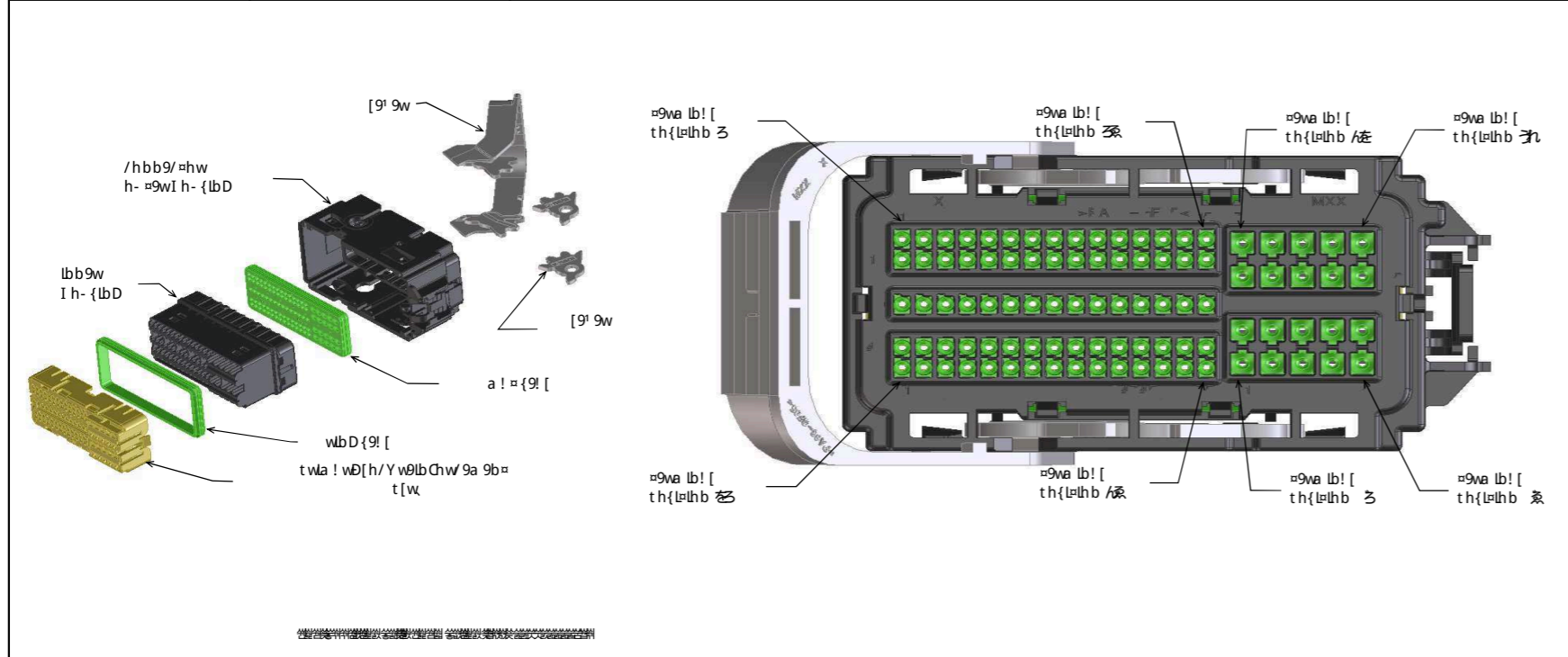








产品型号	连接器端子板
产品规格	规格书
产品描述	连接器端子板



端子位置	端子规格	端子尺寸	端子材料	端子描述	端子备注	端子图示
1	0.8mm	1.27mm	磷青铜	普通型		
2	0.8mm	1.27mm	磷青铜	普通型		
3	0.8mm	1.27mm	磷青铜	普通型		
4	0.8mm	1.27mm	磷青铜	普通型		
5	0.8mm	1.27mm	磷青铜	普通型		
6	0.8mm	1.27mm	磷青铜	普通型		
7	0.8mm	1.27mm	磷青铜	普通型		
8	0.8mm	1.27mm	磷青铜	普通型		
9	0.8mm	1.27mm	磷青铜	普通型		
10	0.8mm	1.27mm	磷青铜	普通型		
11	0.8mm	1.27mm	磷青铜	普通型		
12	0.8mm	1.27mm	磷青铜	普通型		
13	0.8mm	1.27mm	磷青铜	普通型		
14	0.8mm	1.27mm	磷青铜	普通型		
15	0.8mm	1.27mm	磷青铜	普通型		
16	0.8mm	1.27mm	磷青铜	普通型		
17	0.8mm	1.27mm	磷青铜	普通型		
18	0.8mm	1.27mm	磷青铜	普通型		
19	0.8mm	1.27mm	磷青铜	普通型		
20	0.8mm	1.27mm	磷青铜	普通型		

端子位置	端子规格	端子尺寸	端子规格								端子尺寸	端子材料	端子描述	端子备注	
			1	2	3	4	5	6	7	8					
1	0.8mm	1.27mm	0.8	0.8	0.8	0.8	0.8	0.8	0.8	0.8	0.8	磷青铜	普通型		
2	0.8mm	1.27mm	0.8	0.8	0.8	0.8	0.8	0.8	0.8	0.8	0.8	磷青铜	普通型		
3	0.8mm	1.27mm	0.8	0.8	0.8	0.8	0.8	0.8	0.8	0.8	0.8	磷青铜	普通型		
4	0.8mm	1.27mm	0.8	0.8	0.8	0.8	0.8	0.8	0.8	0.8	0.8	磷青铜	普通型		
5	0.8mm	1.27mm	0.8	0.8	0.8	0.8	0.8	0.8	0.8	0.8	0.8	磷青铜	普通型		
6	0.8mm	1.27mm	0.8	0.8	0.8	0.8	0.8	0.8	0.8	0.8	0.8	磷青铜	普通型		
7	0.8mm	1.27mm	0.8	0.8	0.8	0.8	0.8	0.8	0.8	0.8	0.8	磷青铜	普通型		
8	0.8mm	1.27mm	0.8	0.8	0.8	0.8	0.8	0.8	0.8	0.8	0.8	磷青铜	普通型		
9	0.8mm	1.27mm	0.8	0.8	0.8	0.8	0.8	0.8	0.8	0.8	0.8	磷青铜	普通型		
10	0.8mm	1.27mm	0.8	0.8	0.8	0.8	0.8	0.8	0.8	0.8	0.8	磷青铜	普通型		
11	0.8mm	1.27mm	0.8	0.8	0.8	0.8	0.8	0.8	0.8	0.8	0.8	磷青铜	普通型		
12	0.8mm	1.27mm	0.8	0.8	0.8	0.8	0.8	0.8	0.8	0.8	0.8	磷青铜	普通型		
13	0.8mm	1.27mm	0.8	0.8	0.8	0.8	0.8	0.8	0.8	0.8	0.8	磷青铜	普通型		
14	0.8mm	1.27mm	0.8	0.8	0.8	0.8	0.8	0.8	0.8	0.8	0.8	磷青铜	普通型		
15	0.8mm	1.27mm	0.8	0.8	0.8	0.8	0.8	0.8	0.8	0.8	0.8	磷青铜	普通型		
16	0.8mm	1.27mm	0.8	0.8	0.8	0.8	0.8	0.8	0.8	0.8	0.8	磷青铜	普通型		
17	0.8mm	1.27mm	0.8	0.8	0.8	0.8	0.8	0.8	0.8	0.8	0.8	磷青铜	普通型		
18	0.8mm	1.27mm	0.8	0.8	0.8	0.8	0.8	0.8	0.8	0.8	0.8	磷青铜	普通型		
19	0.8mm	1.27mm	0.8	0.8	0.8	0.8	0.8	0.8	0.8	0.8	0.8	磷青铜	普通型		
20	0.8mm	1.27mm	0.8	0.8	0.8	0.8	0.8	0.8	0.8	0.8	0.8	磷青铜	普通型		









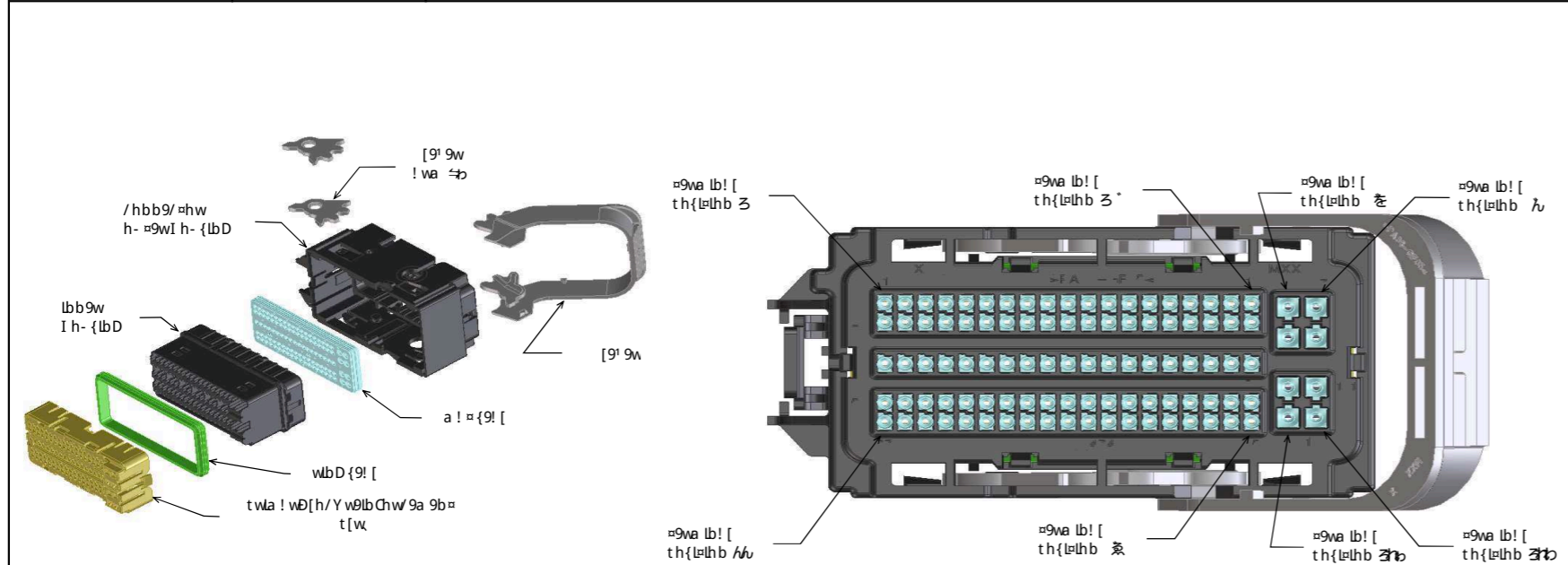
### [3] 300 Pin Connector Assembly

<p>Connector Assembly</p> <p>Connector Assembly</p>	<p>Parts List</p> <p>Parts List</p>		<table border="1" style="width: 100%; border-collapse: collapse;"> <tr><th>Part No.</th><th>Description</th><th>Quantity</th><th>Unit</th></tr> <tr><td>1</td><td>Housing</td><td>1</td><td>EA</td></tr> <tr><td>2</td><td>Contacts</td><td>300</td><td>EA</td></tr> <tr><td>3</td><td>Latch</td><td>1</td><td>EA</td></tr> <tr><td>4</td><td>Bracket</td><td>1</td><td>EA</td></tr> </table>	Part No.	Description	Quantity	Unit	1	Housing	1	EA	2	Contacts	300	EA	3	Latch	1	EA	4	Bracket	1	EA
Part No.	Description	Quantity	Unit																				
1	Housing	1	EA																				
2	Contacts	300	EA																				
3	Latch	1	EA																				
4	Bracket	1	EA																				

Connector Assembly	Parts List	Pin Configuration										Signal	Power	Ground		
		1	2	3	4	5	6	7	8	9	10					
Connector Assembly	Parts List	Signal	Power	Ground	Signal	Power	Ground	Signal	Power	Ground	Signal	Power	Ground	Signal	Power	Ground
		Signal	Power	Ground	Signal	Power	Ground	Signal	Power	Ground	Signal	Power	Ground	Signal	Power	Ground
		Signal	Power	Ground	Signal	Power	Ground	Signal	Power	Ground	Signal	Power	Ground	Signal	Power	Ground
		Signal	Power	Ground	Signal	Power	Ground	Signal	Power	Ground	Signal	Power	Ground	Signal	Power	Ground
Connector Assembly	Parts List	Signal	Power	Ground	Signal	Power	Ground	Signal	Power	Ground	Signal	Power	Ground	Signal	Power	Ground
		Signal	Power	Ground	Signal	Power	Ground	Signal	Power	Ground	Signal	Power	Ground	Signal	Power	Ground
		Signal	Power	Ground	Signal	Power	Ground	Signal	Power	Ground	Signal	Power	Ground	Signal	Power	Ground
		Signal	Power	Ground	Signal	Power	Ground	Signal	Power	Ground	Signal	Power	Ground	Signal	Power	Ground
Connector Assembly	Parts List	Signal	Power	Ground	Signal	Power	Ground	Signal	Power	Ground	Signal	Power	Ground	Signal	Power	Ground
		Signal	Power	Ground	Signal	Power	Ground	Signal	Power	Ground	Signal	Power	Ground	Signal	Power	Ground
		Signal	Power	Ground	Signal	Power	Ground	Signal	Power	Ground	Signal	Power	Ground	Signal	Power	Ground
		Signal	Power	Ground	Signal	Power	Ground	Signal	Power	Ground	Signal	Power	Ground	Signal	Power	Ground
Connector Assembly	Parts List	Signal	Power	Ground	Signal	Power	Ground	Signal	Power	Ground	Signal	Power	Ground	Signal	Power	Ground
		Signal	Power	Ground	Signal	Power	Ground	Signal	Power	Ground	Signal	Power	Ground	Signal	Power	Ground
		Signal	Power	Ground	Signal	Power	Ground	Signal	Power	Ground	Signal	Power	Ground	Signal	Power	Ground
		Signal	Power	Ground	Signal	Power	Ground	Signal	Power	Ground	Signal	Power	Ground	Signal	Power	Ground

**분배기용 배선 커넥터 사양서**  
 배선 커넥터 사양서

제품명: 배선 커넥터	모델명: 5803040400
회사명: 모LEX	
도면번호: 5803040400	



구분	구분명	구분코드	구분코드	구분코드	구분코드
배선 커넥터	배선 커넥터	5803040400	5803040400	5803040400	5803040400
	배선 커넥터	5803040400	5803040400	5803040400	5803040400
	배선 커넥터	5803040400	5803040400	5803040400	5803040400
	배선 커넥터	5803040400	5803040400	5803040400	5803040400
	배선 커넥터	5803040400	5803040400	5803040400	5803040400
	배선 커넥터	5803040400	5803040400	5803040400	5803040400
	배선 커넥터	5803040400	5803040400	5803040400	5803040400
	배선 커넥터	5803040400	5803040400	5803040400	5803040400
	배선 커넥터	5803040400	5803040400	5803040400	5803040400
	배선 커넥터	5803040400	5803040400	5803040400	5803040400
	배선 커넥터	5803040400	5803040400	5803040400	5803040400
	배선 커넥터	5803040400	5803040400	5803040400	5803040400

구분명	구분코드	구분명										구분명	구분코드	구분명	구분코드
		구분명													
		구분명	구분코드	구분명	구분코드	구분명	구분코드	구분명	구분코드	구분명	구분코드				
배선 커넥터	5803040400	배선 커넥터	5803040400	배선 커넥터	5803040400	배선 커넥터	5803040400	배선 커넥터	5803040400	배선 커넥터	5803040400	배선 커넥터	5803040400	배선 커넥터	5803040400
배선 커넥터	5803040400	배선 커넥터	5803040400	배선 커넥터	5803040400	배선 커넥터	5803040400	배선 커넥터	5803040400	배선 커넥터	5803040400	배선 커넥터	5803040400	배선 커넥터	5803040400
배선 커넥터	5803040400	배선 커넥터	5803040400	배선 커넥터	5803040400	배선 커넥터	5803040400	배선 커넥터	5803040400	배선 커넥터	5803040400	배선 커넥터	5803040400	배선 커넥터	5803040400
배선 커넥터	5803040400	배선 커넥터	5803040400	배선 커넥터	5803040400	배선 커넥터	5803040400	배선 커넥터	5803040400	배선 커넥터	5803040400	배선 커넥터	5803040400	배선 커넥터	5803040400
배선 커넥터	5803040400	배선 커넥터	5803040400	배선 커넥터	5803040400	배선 커넥터	5803040400	배선 커넥터	5803040400	배선 커넥터	5803040400	배선 커넥터	5803040400	배선 커넥터	5803040400





















F  
E  
D  
C  
B  
A

TPA SHOWN IN OPEN POSITION AND  
LEVER IN PRE-MATE POSITION

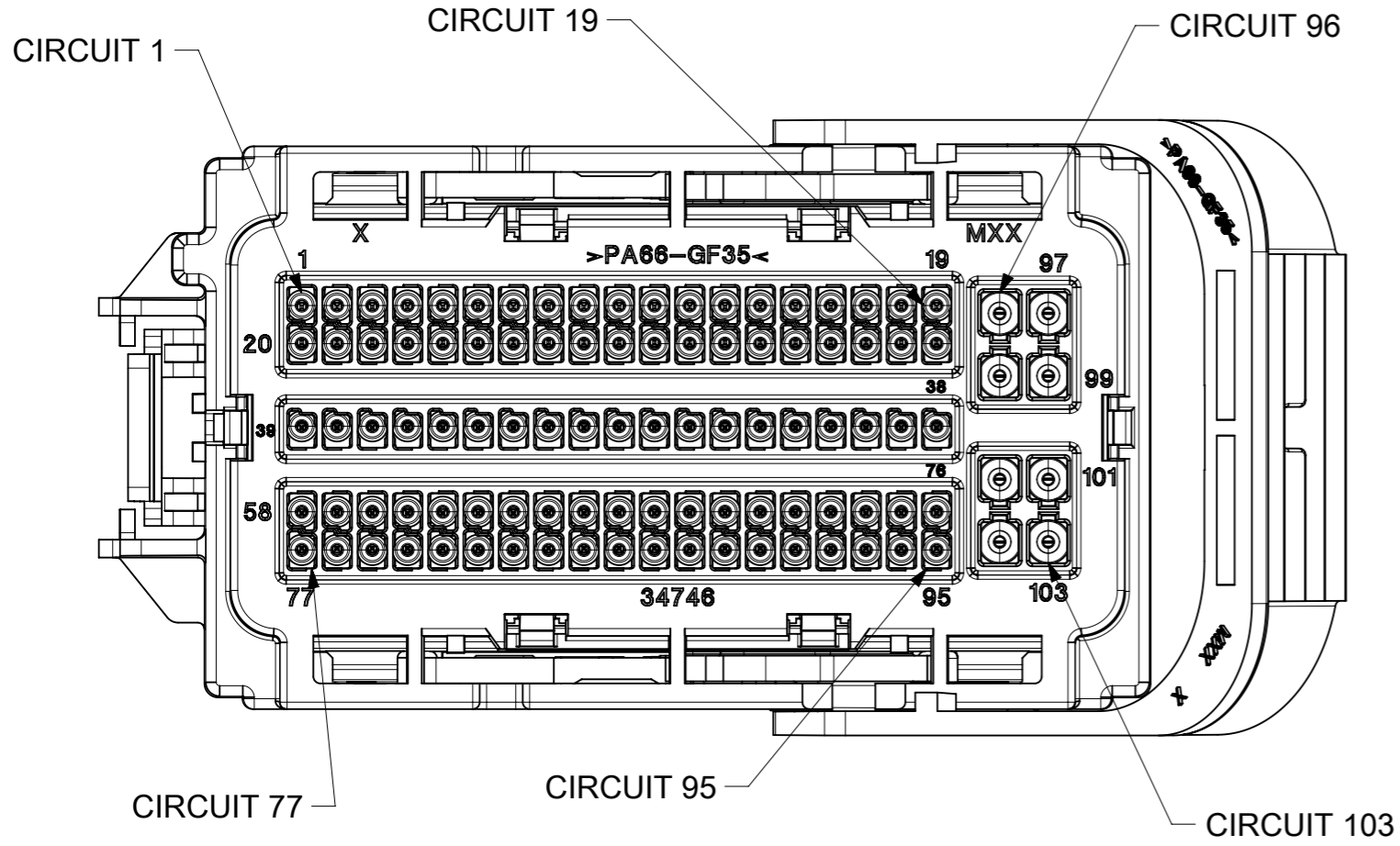
61.08 ±1.50 (7)

(69.33)

(67.94)

(R54.38) LEVER SWING ARM  
(45°) ROTATION

TPA SHOWN IN CLOSED POSITION AND LEVER IN MA  
LOCKING FEATURES TO BE DESIGNED INTO DRESS COVER



VIEW SHOWN WITH  
MOLDED IN CAVITY PLUGS

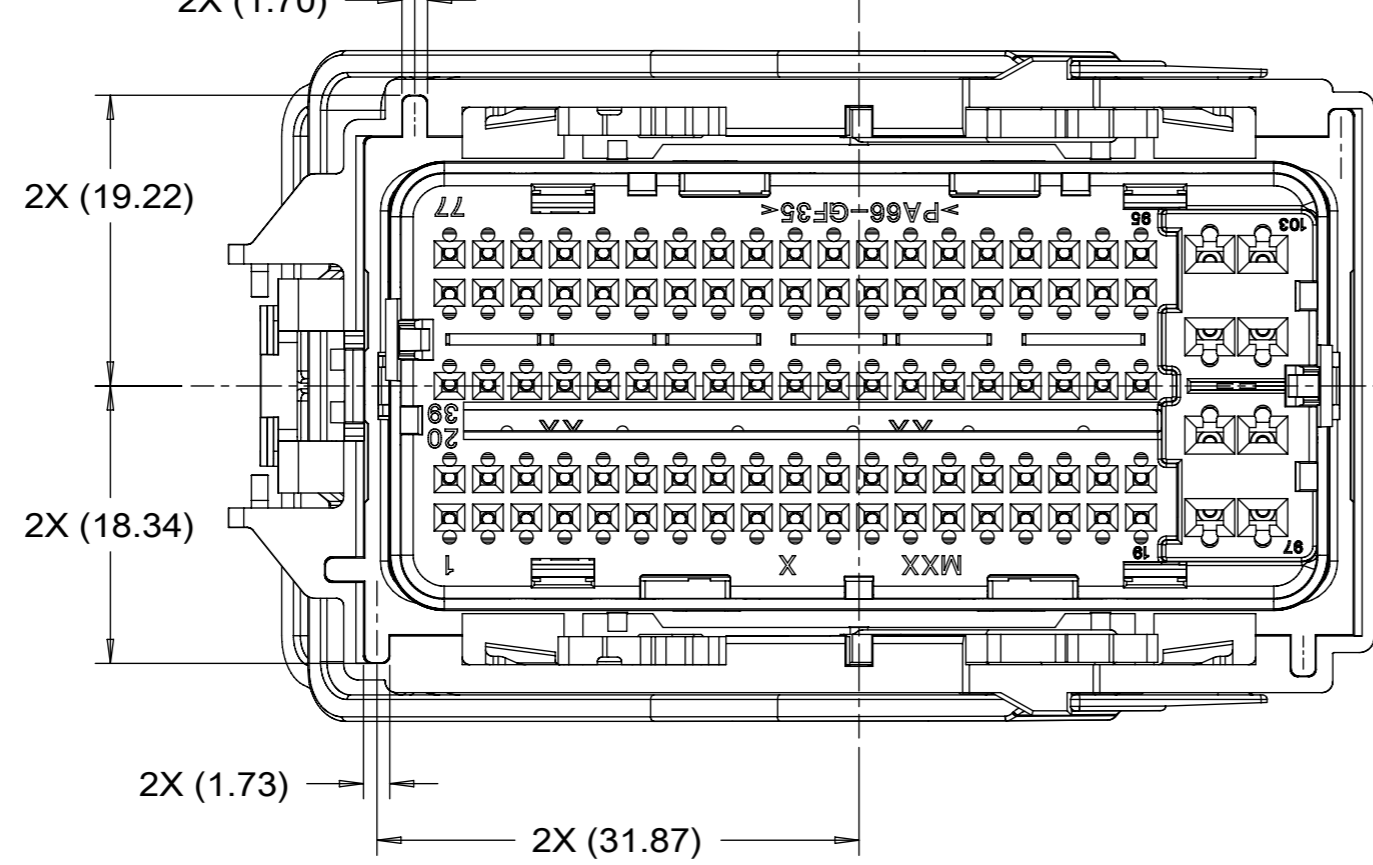
(Ø78.67)  
PASS THROUGH

(1)  
CLEARANCE

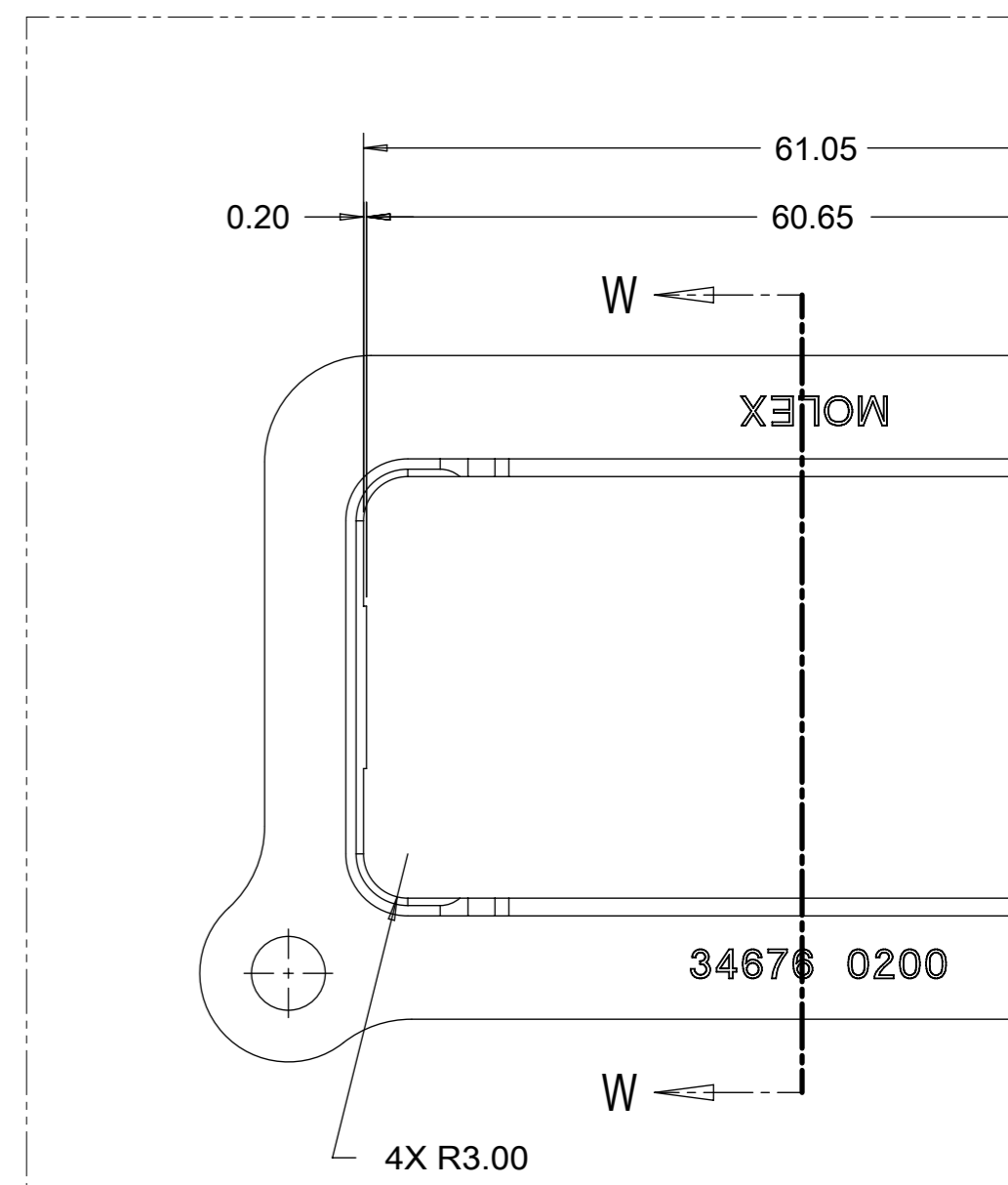
SCALE 1:1

OVER-THE-TOP LEVER OPTION  
P/N 34993-1001, KEY 1

DOCUMENT STATUS	P1	RELEASE DATE	2020/03/24	15:53:07
-----------------	----	--------------	------------	----------

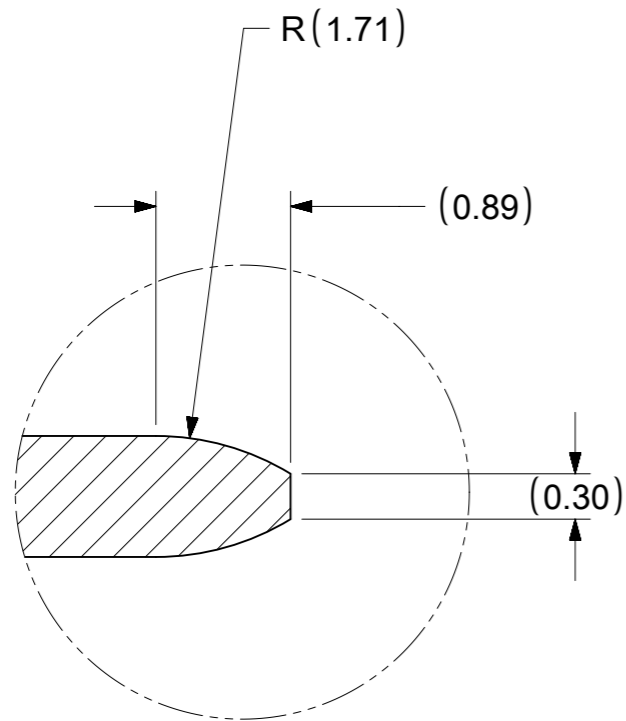


34993-4XXX (END LATCH LEVER)  
 34993-5XXX (TOP LATCH LEVER)  
 KEY OPTION 3

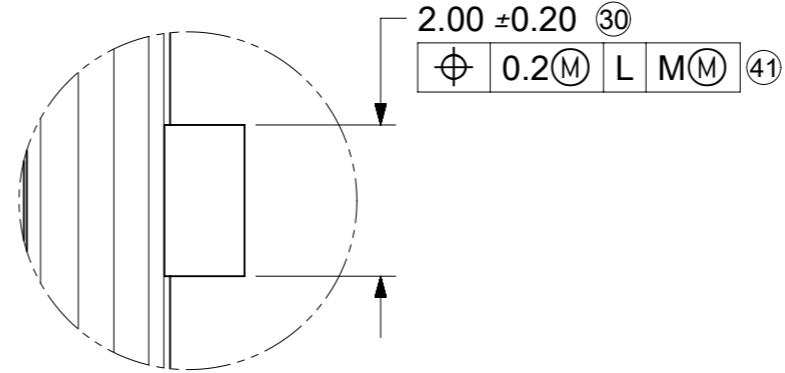


TPA

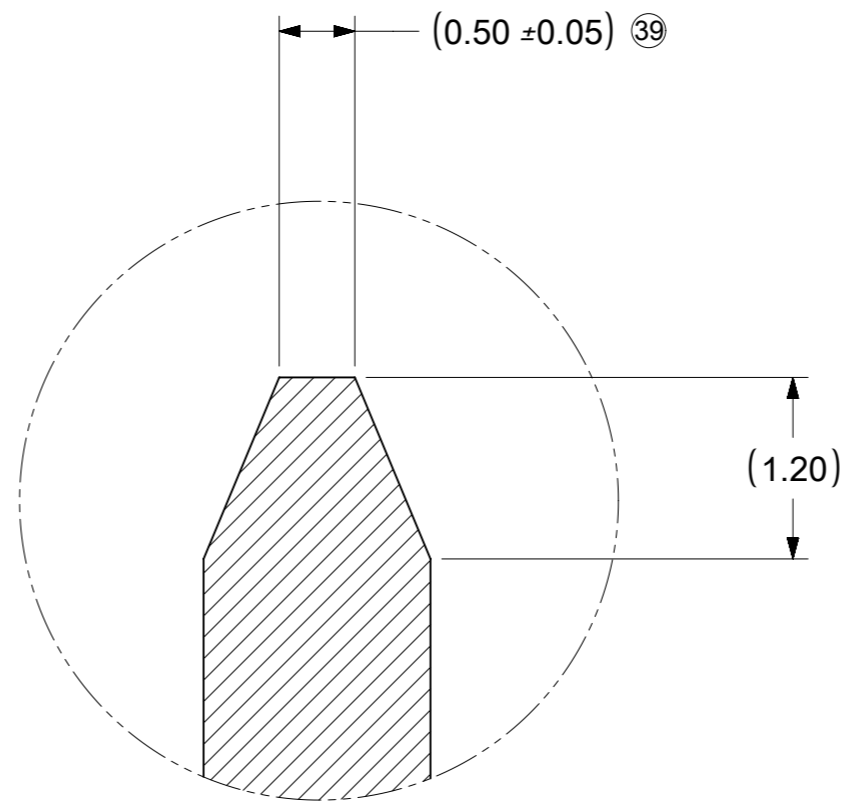
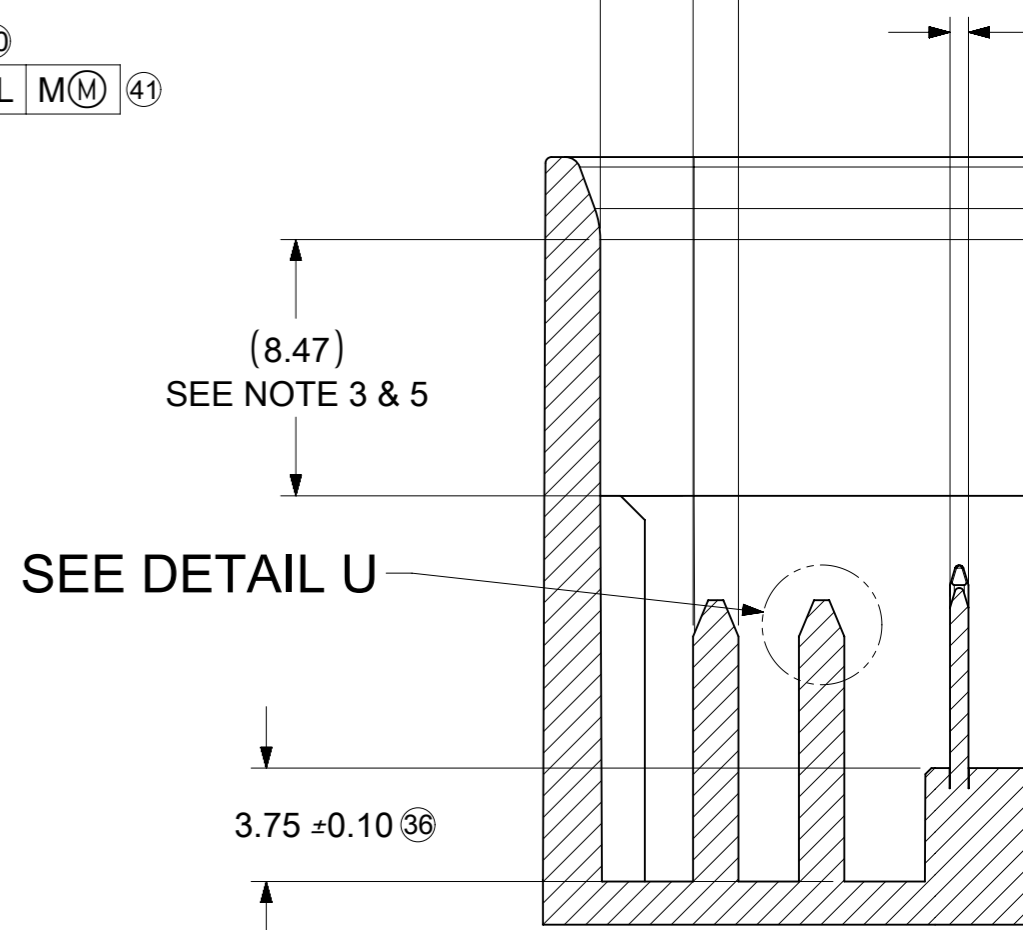
A	DOCUMENT STATUS	P1	RELEASE DATE	2020/03/24	15:53:07															
	24	23	22	21	20	19	18	17	16											



DETAIL V  
SCALE 20:1  
TYPICAL 1.5 BLADE



DETAIL S  
SCALE 10:1



DETAIL U  
SCALE 20:1  
TYPICAL 1.5 BLADE

DOCUMENT STATUS	P1	RELEASE DATE	2020/03/24	15:53:07
-----------------	----	--------------	------------	----------

## X-ON Electronics

Largest Supplier of Electrical and Electronic Components

*Click to view similar products for [Automotive Connectors](#) category:*

*Click to view products by [Molex](#) manufacturer:*

Other Similar products are found below :

[003-018-000](#) [600858](#) [60403001](#) [60993906-B](#) [60993913-B](#) [629515004020001](#) [M902-2131](#) [M902-2161](#) [M902-2344](#) [72.330.1035.1](#)  
[73.353.4028.0](#) [F118010](#) [F119300-B](#) [F132210](#) [F132210-B](#) [F166900](#) [F180100](#) [F258300](#) [F258300-B](#) [F294300-B](#) [F339100](#) [F339700](#) [F358300-](#)  
[B](#) [F374110](#) [F407400](#) [F412210](#) [F427600](#) [F444110](#) [F487000](#) [F495100-B](#) [F500900-B](#) [F509500B-B](#) [770444-1](#) [776880-1](#) [827153-1](#) [881735-1](#)  
[8N1515-32-24P](#) [9-1326727-8](#) [9-1326729-8](#) [925467-1](#) [925474-1](#) [928905-1](#) [936398-2](#) [964562-1](#) [964562-4](#) [964731-2](#) [965051-1](#) [968782-1](#)  
[GT17SA-8DS-HU](#) [GT17VS-10DP-5.2CF](#)