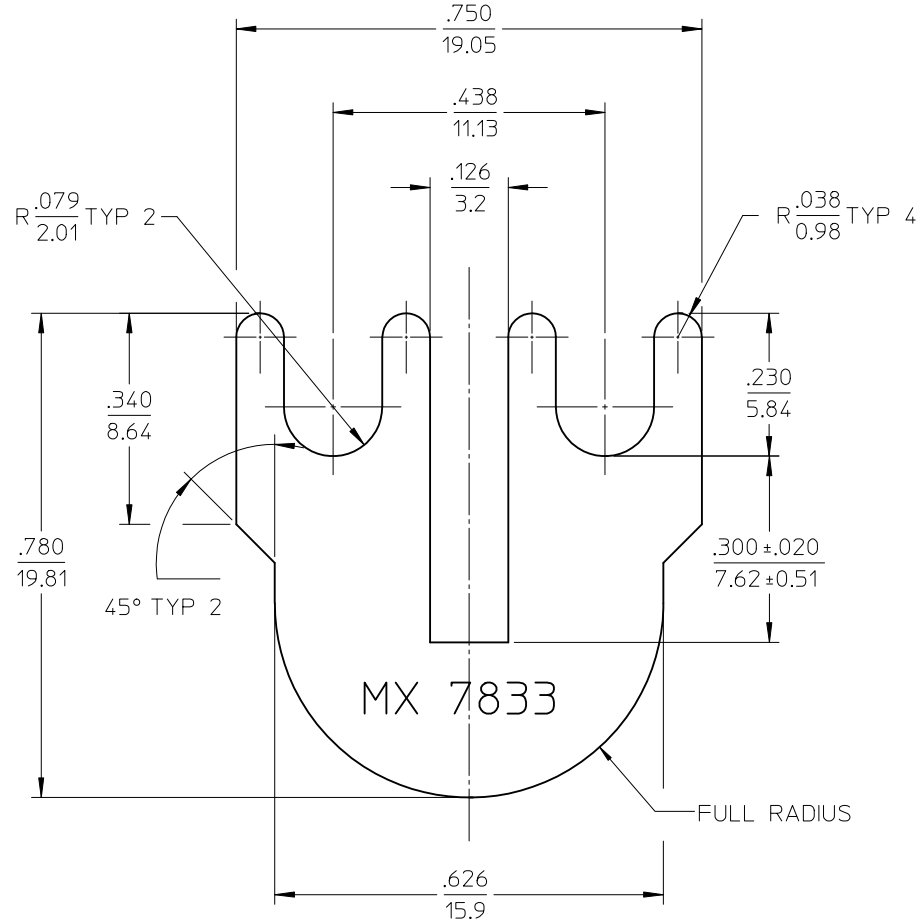


MATERIAL NO.	ENGINEERING NO.
380021478	7833



NOTE:

1. MATERIAL: 70/30 BRASS (.032/.81 THICK)
2. FINISH: NICKEL PLATING
3. IMPRINT CHARACTERS .050 HIGH LOCATED APPROXIMATELY AS SHOWN



MX TEXT WAS BEAU EC NO: WNA2012-0105 DRWN:RSTONE 2011/08/17 CHKDB:RUPERT 2011/08/18 APPR:JFURPHY 2012/01/12 REV B	QUALITY SYMBOLS ▼=0 ▽=0	GENERAL TOLERANCES (UNLESS SPECIFIED) 4 PLACES ± --- ± --- 3 PLACES ± --- ± .005 2 PLACES ± 0.13 ± .01 1 PLACE ± 0.25 ± --- ANGULAR ± 2°	DIMENSION STYLE IN/MM DRAWN BY CYORK DATE 06/02/15 CHECKED BY ASAYDEH DATE 06/02/16 APPROVED BY RDEROSS DATE 06/02/16	SCALE 1:1 DESIGN UNITS INCH THIRD ANGLE PROJECTION	TITLE TERMINAL JUMPER, EDGE ON
	DRAFT WHERE APPLICABLE MUST REMAIN WITHIN DIMENSIONS		MATERIAL NO. SEE CHART	DOCUMENT NO. SD-38002-041	SHEET NO. 1 OF 1
	MOLEX INCORPORATED				
	THIS DRAWING CONTAINS INFORMATION THAT IS PROPRIETARY TO MOLEX INCORPORATED AND SHOULD NOT BE USED WITHOUT WRITTEN PERMISSION				

X-ON Electronics

Largest Supplier of Electrical and Electronic Components

Click to view similar products for [Terminal Block Tools & Accessories](#) category:

Click to view products by [Molex](#) manufacturer:

Other Similar products are found below :

[00110919038](#) [00110920042](#) [00110930040](#) [00110940041](#) [00111201025](#) [00111210025](#) [00111230025](#) [00111240025](#) [00170400102](#)
[00170420302](#) [00171400102](#) [00171420102](#) [00171430102](#) [001751 605 00](#) [00175161000](#) [00177720504](#) [00190100100](#) [00190100300](#)
[00190105000](#) [00190105200](#) [00610100300](#) [00610100400](#) [00611421007](#) [0117510000](#) [0117960000](#) [0117980000](#) [0119960000](#) [0130160000](#)
[0134700000](#) [0156100000](#) [0168600000](#) [017352311](#) [0178100000](#) [0191320000](#) [0194300000](#) [0194500000](#) [0199360000](#) [0200020](#) [0200046](#)
[0200059](#) [0200062](#) [0200075](#) [0201029](#) [0201061](#) [0201113](#) [0201139](#) [0201142](#) [0201155](#) [0201197](#) [0201223](#)