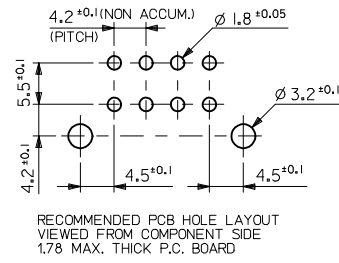
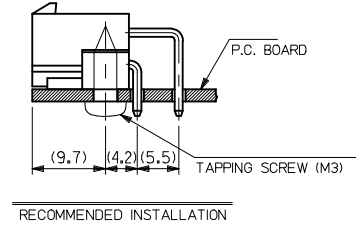
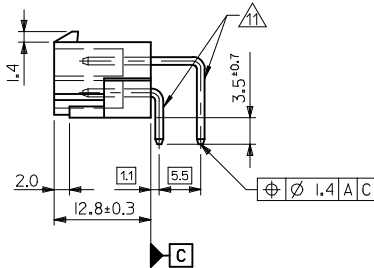
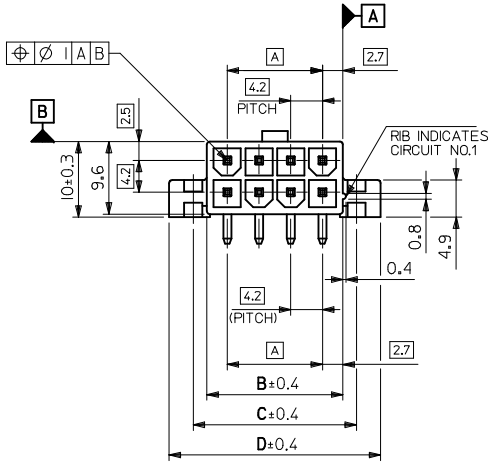
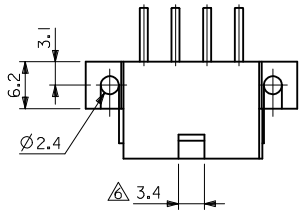


NOTES:

1. MATERIAL:
HOUSING MATERIAL: SEE CHART
TERMINAL MATERIAL: BRASS ALLOY
2. FINISH: SEE CHART
3. PRODUCT SPECIFICATION: PS-5556-001
4. PACKAGING SPECIFICATION: SEE CHART
BULK PACKED PER PK-5569-NA8 OR PK-5569-002
TRAY PACKED PER PK-5569-004, 39295083 IS TRAY PACKED
5. MATES WITH 5557 SERIES MINIFIT JR RECEPTACLE
6. FOR THE 2 CIRCUITS HEADER, THIS DIMENSION IS 4.2 MM
7. DISCOLORATION IN THE BANDOLIER CARRIER AREA OF THE PIN IS INHERENT TO THE PLATING PROCESS AND IS DUE TO THE MASKING EFFECT OF THE CARRIER. THIS DISCOLORATION IS IN A NON-FUNCTIONAL AREA OF THE PIN AND WILL NOT AFFECT THE PERFORMANCE OF THE HEADER ASSEMBLY.
8. PARTS ARE NOT DESIGNED FOR CURRENT SHARING.
9. CONNECTORS ARE NOT TO BE MATED OR UNMATED WHILE CIRCUITS ARE LIVE.
10. PART CONFORMS TO CLASS "B" REQUIREMENTS OF COSMETIC SPECIFICATION PS-45499-002.
11. FORMING MARKS ON PINS ARE ACCEPTABLE.

ENG. NO.	HEADER MATERIAL	FINISH OF PIN
5569-NA1	NYLON 66, UL94V-2, COLOR: NATURAL	MATTE TIN 2.54 μm MIN. OVER NICKEL 1.27 μm MIN.
▲ -NA1-210	NYLON 66, UL94V-0, COLOR: NATURAL	
-NA1-400	NYLON 66, UL94V-0, COLOR: BLACK	
-NAG1	NYLON 66, UL94V-2, COLOR: NATURAL	GOLD 0.76 μm MIN. AND TIN OVER 2.54 μm MIN. OVER NICKEL 1.27 μm MIN.
-NAG1-210	NYLON 66, UL94V-0, COLOR: NATURAL	
-NA1G-400	NYLON 66, UL94V-0, COLOR: BLACK	
-NAIGS2	NYLON 66, UL94V-2, COLOR: NATURAL	GOLD 0.38 μm MIN. AND TIN OVER 2.54 μm MIN. OVER NICKEL 1.27 μm MIN.
▼ -NAIGS2-210	NYLON 66, UL94V-0, COLOR: NATURAL	
-NAIGS3	NYLON 66, UL94V-2, COLOR: NATURAL	
5569-NAIGS3-210	NYLON 66, UL94V-0, COLOR: NATURAL	GOLD 1.27 μm MIN. AND TIN OVER 2.54 μm MIN. OVER NICKEL 1.27 μm MIN.



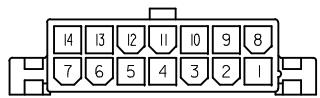
61.6	55.2	51.6	46.2	24
57.4	51	47.4	42	22
53.2	46.8	43.2	37.8	20
49	42.6	39	33.6	18
44.8	38.4	34.8	29.4	16
40.6	34.2	30.6	25.2	14
36.4	30	26.4	21	12
32.2	25.8	22.2	16.8	10
28	21.6	18	12.6	8
23.8	17.4	13.8	8.4	6
19.6	13.2	9.6	4.2	4
15.4	9	5.4	—	2
D	C	B	A	NO. OF CIRCUITS

REV	DESCRIPTION	QUALITY SYMBOLS
M1	ADD -400 P/N'S EC NO: UCP2016-0308 DRWN: DFOX 2015/07/21 CHKD: JBELL 2015/07/21 APPR: FSMITH 2015/07/30	▽=0 ▽=0 ▽=0

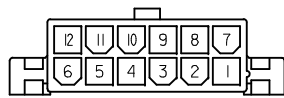
GENERAL TOLERANCES (UNLESS SPECIFIED)	
mm	INCH
4 PLACES ± ---	± ---
3 PLACES ± ---	± ---
2 PLACES ± 0.2	± ---
1 PLACE ± 0.2	± ---
0 PLACE ± ---	± ---
ANGULAR ± 3 °	
DRAFT WHERE APPLICABLE MUST REMAIN WITHIN DIMENSIONS	

DIMENSION STYLE	
MM ONLY	
DRAWN BY	DATE
H.HIRAMOTO	'90/04/23
CHECKED BY	DATE
M.FUKUSHIMA	'91/07/04
APPROVED BY	DATE
M.ENOMOTO	'91/07/04
MATERIAL NO.	
SEE CHART	

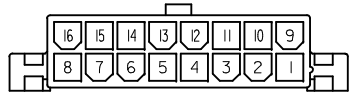
SCALE	DESIGN UNITS	THIRD ANGLE PROJECTION
2:1	METRIC	☉
MINI FIT JR RIGHT ANGLE HEADER ASSY WITH FLANGES		
molex		
DOCUMENT NO.	SD-5569-002	SHEET NO.
		1 OF 2
THIS DRAWING CONTAINS INFORMATION THAT IS PROPRIETARY TO MOLEX INCORPORATED AND SHOULD NOT BE USED WITHOUT WRITTEN PERMISSION		



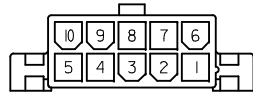
14 CKTS.



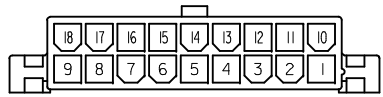
12 CKTS.



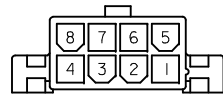
16 CKTS.



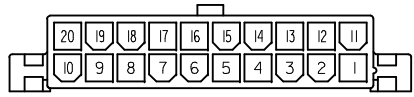
10 CKTS.



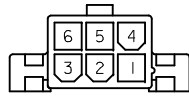
18 CKTS.



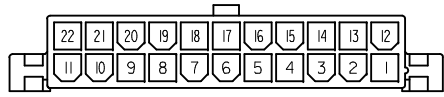
8 CKTS.



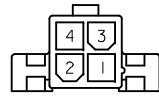
20 CKTS.



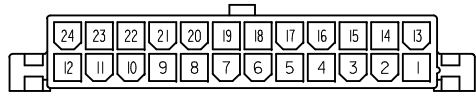
6 CKTS.



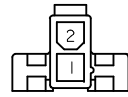
22 CKTS.



4 CKTS.



24 CKTS.



2 CKTS.

CIRCUIT SIZE LAYOUT
(SCALE 2:1)

BULK PACKED				
EDP NO.	ENG. NO.	EDP NO.	ENG. NO.	CIRCUIT SIZE
39-29-4249	5569-24AG1-210	39-29-1247	5569-24A1-210	24
▲ -4229	▲ -22AG1-210	▲ -1227	▲ -22A1-210	22
▲ -4209	▲ -20AG1-210	▲ -1207	▲ -20A1-210	20
▲ -4189	▲ -18AG1-210	▲ -1187	▲ -18A1-210	18
▲ -4169	▲ -16AG1-210	▲ -1167	▲ -16A1-210	16
▲ -4149	▲ -14AG1-210	▲ -1147	▲ -14A1-210	14
▲ -4129	▲ -12AG1-210	▲ -1127	▲ -12A1-210	12
▲ -4109	▲ -10AG1-210	▲ -1107	▲ -10A1-210	10
▲ -4089	▲ -08AG1-210	▲ -1087	▲ -08A1-210	8
▲ -4069	▲ -06AG1-210	▲ -1067	▲ -06A1-210	6
▲ -4049	▲ -04AG1-210	▲ -1047	▲ -04A1-210	4
39-29-4029	5569-02AG1-210	39-29-1027	5569-02A1-210	2

5569-NAG1-210		5569-NA1-210		CIRCUIT SIZE
EDP NO.	ENG. NO.	EDP NO.	ENG. NO.	
39-29-5243	5569-24AG1	39-29-1248	5569-24A1	24
▲ -5223	▲ -22AG1	▲ -1228	▲ -22A1	22
▲ -5203	▲ -20AG1	▲ -1208	▲ -20A1	20
▲ -5183	▲ -18AG1	▲ -1188	▲ -18A1	18
▲ -5163	▲ -16AG1	▲ -1168	▲ -16A1	16
▲ -5143	▲ -14AG1	▲ -1148	▲ -14A1	14
▲ -5123	▲ -12AG1	▲ -1128	▲ -12A1	12
▲ -5103	▲ -10AG1	▲ -1108	▲ -10A1	10
▲ -5083	▲ -08AG1	▲ -1088	▲ -08A1	8
▲ -5063	▲ -06AG1	▲ -1068	▲ -06A1	6
▲ -5043	▲ -04AG1	▲ -1048	▲ -04A1	4
39-29-5023	5569-02AG1	39-29-1028	5569-02A1	2

5569-NAG1		5569-NA1		CIRCUIT SIZE
EDP NO.	ENG. NO.	EDP NO.	ENG. NO.	
				24
				22
				20
				18
				16
				14
				12
				10
				8
				6
39-34-7045	5569-04A IGS3-210	39-34-7043	5569-04A IGS2-210	4
39-34-7025	5569-02A IGS3-210	39-34-7023	5569-02A IGS2-210	2

TRAY PACKED				
EDP NO.	ENG. NO.	EDP NO.	ENG. NO.	CIRCUIT SIZE
46999-0791	5569-24A1G-400	46999-0779	5569-24A1-400	24
▲ -0790	▲ -22A1G-400	▲ -0778	▲ -22A1-400	22
▲ -0789	▲ -20A1G-400	▲ -0777	▲ -20A1-400	20
▲ -0788	▲ -18A1G-400	▲ -0776	▲ -18A1-400	18
▲ -0787	▲ -16A1G-400	▲ -0775	▲ -16A1-400	16
▲ -0786	▲ -14A1G-400	▲ -0774	▲ -14A1-400	14
▲ -0785	▲ -12A1G-400	▲ -0773	▲ -12A1-400	12
▲ -0784	▲ -10A1G-400	▲ -0772	▲ -10A1-400	10
▲ -0783	▲ -08A1G-400	▲ -0771	▲ -08A1-400	8
▲ -0782	▲ -06A1G-400	▲ -0770	▲ -06A1-400	6
▲ -0781	▲ -04A1G-400	▲ -0769	▲ -04A1-400	4
46999-0780	5569-02A1G-400	46999-0768	5569-02A1-400	2

5569-NA1G-400		5569-NA1-400		CIRCUIT SIZE
EDP NO.	ENG. NO.	EDP NO.	ENG. NO.	
				24
				22
				20
				18
				16
				14
				12
				10
				8
				6
39-34-7044	5569-04A IGS3	39-34-7042	5569-04A IGS2	4
39-34-7024	5569-02A IGS3	39-34-7022	5569-02A IGS2	2

SEE SHEET 1 EC NO: UCP2016-0308 DRWN: JDOX 2015/07/21 CHKD: JBELL 2015/07/21 APPR: FSMITH 2015/07/30	QUALITY SYMBOLS ▽=0 ▽=0 ▽=0	GENERAL TOLERANCES (UNLESS SPECIFIED) <table border="1"> <tr> <th></th> <th>mm</th> <th>INCH</th> </tr> <tr> <td>4 PLACES</td> <td>± .005</td> <td>± .0002</td> </tr> <tr> <td>3 PLACES</td> <td>± .005</td> <td>± .0002</td> </tr> <tr> <td>2 PLACES</td> <td>± 0.2</td> <td>± .008</td> </tr> <tr> <td>1 PLACE</td> <td>± 0.2</td> <td>± .008</td> </tr> <tr> <td>0 PLACE</td> <td>± .005</td> <td>± .0002</td> </tr> </table>		mm	INCH	4 PLACES	± .005	± .0002	3 PLACES	± .005	± .0002	2 PLACES	± 0.2	± .008	1 PLACE	± 0.2	± .008	0 PLACE	± .005	± .0002	DIMENSION STYLE MM ONLY DRAWN BY DATE H.HIRAMOTO '90/04/23 CHECKED BY DATE M.FUKUSHIMA '91/07/04 APPROVED BY DATE M.ENOMOTO '91/07/04	SCALE 2:1 DESIGN UNITS METRIC THIRD ANGLE PROJECTION
		mm	INCH																			
	4 PLACES	± .005	± .0002																			
	3 PLACES	± .005	± .0002																			
2 PLACES	± 0.2	± .008																				
1 PLACE	± 0.2	± .008																				
0 PLACE	± .005	± .0002																				
DRAFT WHERE APPLICABLE MUST REMAIN WITHIN DIMENSIONS		MATERIAL NO. SEE CHART		DOCUMENT NO. SD-5569-002																		
SHEET NO. 2 OF 2				SHEET NO. 2 OF 2																		
THIS DRAWING CONTAINS INFORMATION THAT IS PROPRIETARY TO MOLEX INCORPORATED AND SHOULD NOT BE USED WITHOUT WRITTEN PERMISSION																						

X-ON Electronics

Largest Supplier of Electrical and Electronic Components

Click to view similar products for [Headers & Wire Housings](#) category:

Click to view products by [Molex](#) manufacturer:

Other Similar products are found below :

[892-18-020-10-001101](#) [58102-G61-06LF](#) [582553-1](#) [0009485154](#) [009176003701906](#) [0050291907](#) [LY20-4P-DT1-P1E-BR](#) [02.125.8002.8](#)
[609-3404](#) [61062-3](#) [622-0430](#) [622-3653LF](#) [63453-116](#) [636-1030](#) [636-1427](#) [636-3427](#) [636-4007](#) [641938-9](#) [641991-4](#) [644827-2](#) [65817-010LF](#)
[65817-015LF](#) [65863-015LF](#) [66207-023LF](#) [67095-007LF](#) [67601157](#) [68648-049](#) [70.362.1628.0](#) [70-4210](#) [70-4226B](#) [70-4853B](#) [707-5020](#) [707-5028](#) [71.350.2428.0](#) [71918-208LF](#) [71961-016LF](#) [733-134](#) [733-162](#) [754199-000](#) [760-3052](#) [787-8014-00](#) [79531-3000](#) [FCN-360C032-B](#) [FCN-367T-T012/H](#) [FCN-723D010/2](#) [80.063.4001.1](#) [800-90-001-10-001000](#) [800-90-010-10-002000](#) [801-43-002-10-013000](#) [801-43-006-10-002000](#)