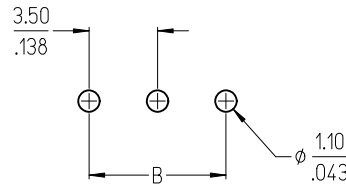


3 CIRCUIT AND 10A IMPRINTING OPTION SHOWN

NO. OF CIRCUITS "XX"	DIM. "A"		DIM. "B"		MATERIAL NO.	MATERIAL NO. 10A IMPRINT
02	7.0	[.28]	3.50	[.138]	39357-0002	393590006
03	10.5	[.41]	7.00	[.276]	39357-0003	393590004
04	14.0	[.55]	10.50	[.413]	39357-0004	
05	17.5	[.69]	14.00	[.551]	39357-0005	393590003
06	21.0	[.83]	17.50	[.689]	39357-0006	
07	24.5	[.96]	21.00	[.827]	39357-0007	
08	28.0	[1.10]	24.50	[.965]	39357-0008	
09	31.5	[1.24]	28.00	[1.102]	39357-0009	
10	35.0	[1.38]	31.50	[1.240]	39357-0010	
11	38.5	[1.52]	35.00	[1.378]	39357-0011	
12	42.0	[1.65]	38.50	[1.516]	39357-0012	
13	45.5	[1.79]	42.00	[1.654]	39357-0013	
14	49.0	[1.93]	45.50	[1.791]	39357-0014	
15	52.5	[2.07]	49.00	[1.929]	39357-0015	
16	56.0	[2.20]	52.50	[2.067]	39357-0016	
17	59.5	[2.34]	56.00	[2.205]	39357-0017	
18	63.0	[2.48]	59.50	[2.343]	39357-0018	
19	66.5	[2.62]	63.00	[2.480]	39357-0019	
20	70.0	[2.76]	66.50	[2.618]	39357-0020	
21	73.5	[2.89]	70.00	[2.756]	39357-0021	
22	77.0	[3.03]	73.50	[2.894]	39357-0022	
23	80.5	[3.17]	77.00	[3.031]	39357-0023	
24	84.0	[3.31]	80.50	[3.169]	39357-0024	
25	87.5	[3.44]	84.00	[3.307]	39357-0025	

NOTES:

- MATERIAL: SEE TABLE
- FINISHES: SEE TABLE
- ASSEMBLY IS ROHS COMPLIANT BY EXEMPTION. COMPONENTS MARKED WITH AN ASTERISK (*) ARE ROHS COMPLIANT BY EXEMPTION, ALL OTHERS ARE ROHS COMPLIANT.



ITEM	QTY.	DESCRIPTION	MATERIAL	FINISH
4	XX	SCREW, M2	COPPER ALLOY	NICKEL
3	XX	CAGE CLAMP (*)	COPPER ALLOY	NICKEL
2	XX	TERMINAL, PC	COPPER ALLOY	TIN
1	1	INSULATOR	POLYAMIDE	BLACK

ADD MATERIAL NO. EC NO: WNA2011-0328 TIDRWA/CLYORK 2010/12/10 CHKD:DTITUS APPR:DTITUS 2010/12/15 DESCRIPTION REV	QUALITY SYMBOLS ▽=0 ▽=0	GENERAL TOLERANCES (UNLESS SPECIFIED) mm INCH 4 PLACES ± --- ± --- 3 PLACES ± --- ± .005 2 PLACES ± 0.13 ± .010 1 PLACE ± 0.3 ± --- ANGULAR ± 2 °	DIMENSION STYLE MM/IN DRAWN BY DATE CLYORK 2010/12/10 CHECKED BY DATE DTITUS 2010/12/10 APPROVED BY DATE DTITUS 2010/12/15	SCALE 1:1 DESIGN UNITS INCH THIRD ANGLE PROJECTION	
	TITLE 3.5MM EUROSTYLE LOW, SINGLE ROW FIXED BLOCK				
	MATERIAL NO.			DOCUMENT NO. SD-39357-001	SHEET NO. 1 OF 1
	DRAFT WHERE APPLICABLE MUST REMAIN WITHIN DIMENSIONS				SEE CHART THIS DRAWING CONTAINS INFORMATION THAT IS PROPRIETARY TO MOLEX INCORPORATED AND SHOULD NOT BE USED WITHOUT WRITTEN PERMISSION

X-ON Electronics

Largest Supplier of Electrical and Electronic Components

Click to view similar products for [Pluggable Terminal Blocks](#) category:

Click to view products by [Molex](#) manufacturer:

Other Similar products are found below :

[57.510.0053](#) [MC 1.5/ 6-ST-3.5 GY AU](#) [734-104](#) [734-302](#) [8-141-P](#) [8426620000](#) [860505](#) [860810](#) [GBPACX-12](#) [93.731.4953.0](#) [PV05-5,08-K](#)
[PVP02-5,00](#) [PVP03-3,50](#) [PVP04-3,50](#) [PVS02-5,00](#) [1-1986160-3](#) [1377680000](#) [1531000000](#) [1546228-5](#) [ELFH16150](#) [ELFP03110](#)
[ELFP10210](#) [ELFT06250](#) [ELVP03100](#) [1700101](#) [1700410](#) [1700425](#) [1702246](#) [1705229](#) [1710175](#) [1714537](#) [1717806](#) [1719600](#) [1728941](#)
[1734692](#) [1734795](#) [1736036](#) [1740194](#) [1740291](#) [1740628](#) [1740990](#) [1746952](#) [1750207](#) [1752441](#) [1752865](#) [1754115](#) [1754144](#) [1756913](#)
[1760051](#) [1760336](#)