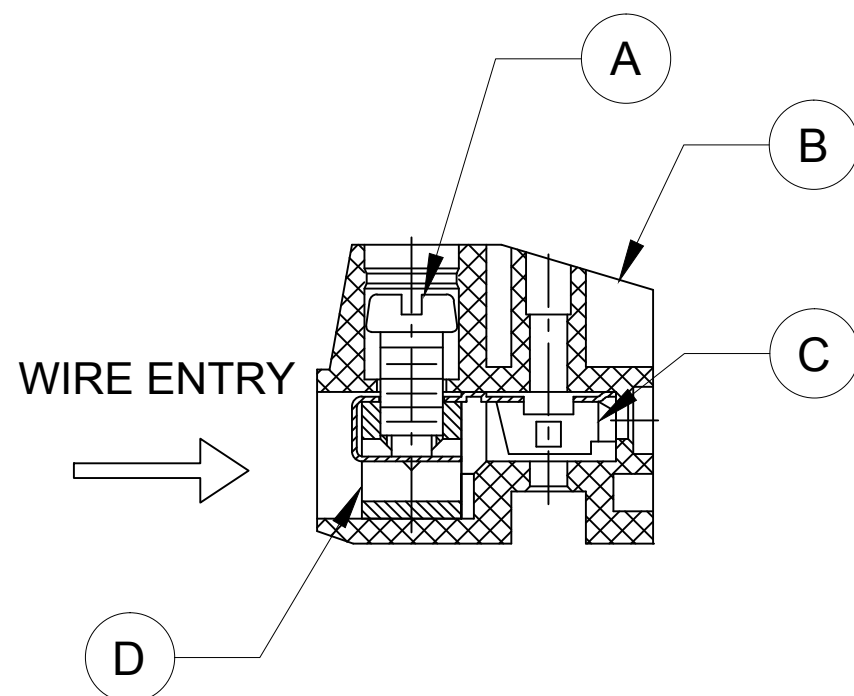
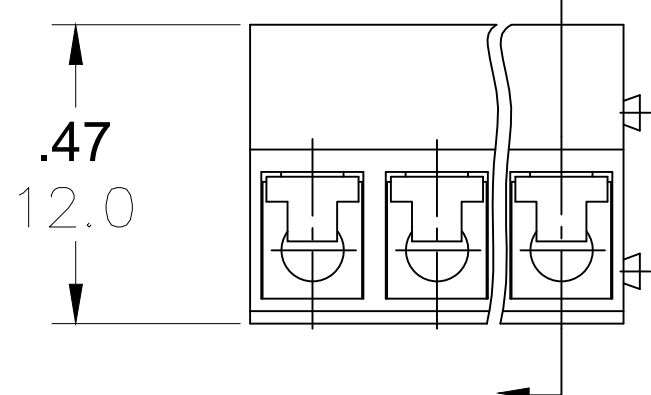
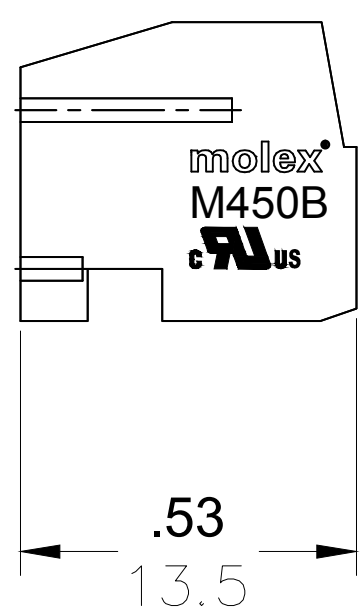
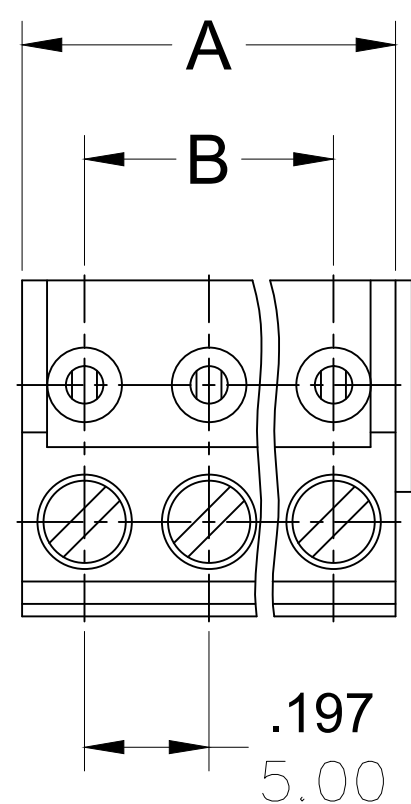


PART NUMBER DATA

CIRCUITS	PART NUMBER	ENGINEERING NUMBER	COLOR	A IN mm		B IN mm	
2	397530002	M450B-00-1-02-3	GREEN	.39	10.0	.197	5.00
3	397530003	M450B-00-1-03-3	GREEN	.59	15.0	.394	10.00
4	397530004	M450B-00-1-04-3	GREEN	.79	20.0	.591	15.00
5	397530005	M450B-00-1-05-3	GREEN	.98	25.0	.787	20.00
6	397530006	M450B-00-1-06-3	GREEN	1.18	30.0	.984	25.00
7	397530007	M450B-00-1-07-3	GREEN	1.38	35.0	1.181	30.00
8	397530008	M450B-00-1-08-3	GREEN	1.57	40.0	1.378	35.00
9	397530009	M450B-00-1-09-3	GREEN	1.77	45.0	1.575	40.00
10	397530010	M450B-00-1-10-3	GREEN	1.97	50.0	1.772	45.00
11	397530011	M450B-00-1-11-3	GREEN	2.17	55.0	1.969	50.00
12	397530012	M450B-00-1-12-3	GREEN	2.36	60.0	2.165	55.00
13		M450B-00-1-13-3	GREEN	2.56	65.0	2.362	60.00
14		M450B-00-1-14-3	GREEN	2.76	70.0	2.559	65.00
15		M450B-00-1-15-3	GREEN	2.95	75.0	2.756	70.00
16		M450B-00-1-16-3	GREEN	3.15	80.0	2.953	75.00
17		M450B-00-1-17-3	GREEN	3.35	85.0	3.150	80.00
18		M450B-00-1-18-3	GREEN	3.54	90.0	3.346	85.00
19		M450B-00-1-19-3	GREEN	3.74	95.0	3.543	90.00
20		M450B-00-1-20-3	GREEN	3.94	100.0	3.740	95.00
21		M450B-00-1-21-3	GREEN	4.13	105.0	3.937	100.00
22		M450B-00-1-22-3	GREEN	4.33	110.0	4.134	105.00
23		M450B-00-1-23-3	GREEN	4.53	115.0	4.331	110.00
24		M450B-00-1-24-3	GREEN	4.72	120.0	4.528	115.00

REF. THE LAST 2 DIGITS OF THE PART NUMBER EQUAL CIRCUIT COUNT



SPECIFICATIONS

1. MATERIAL:

- A. SCREW: M2.5 STEEL, ZINC PLATED
- B. BODY: PA66, UL94V-0
- C. CONTACT: PHOS-BRONZE
- D. CAGE: BRASS, NI PLATED

2. WIRE SIZE: 24 TO 14AWG

3. RATING: 300V, 10A

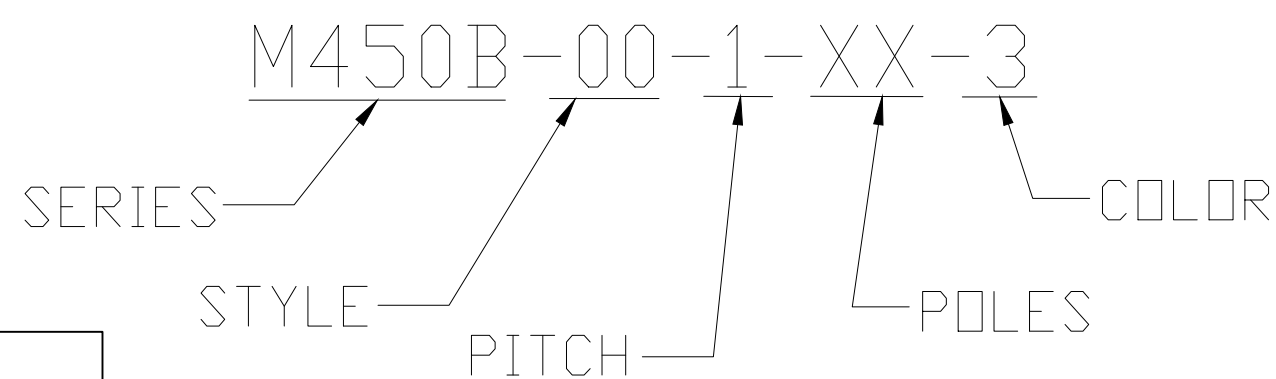
4. MAX TORQUE: 3 IN. LBS.

5. WIRE STRIP LENGTH: .20 IN. (5.0mm)

6. OPERATING TEMPERATURE: -40° C TO +105° C

7. DIMS SHOWN ARE FOR REFERENCE ONLY

ENGINEERING NUMBER LEGEND



CONTACT FACTORY FOR OPTIONAL COLORS

TOLERANCES			
MM	TOL	INCH	TOL
0-6	±0.25	0-.24	±.010
>6-30	±0.40	.24-1.18	±.016
>30-120	±0.50	1.18-4.76	±.020
>120	±0.80	>4.76	±.031

REVISED DOC TOL EC NO: ICG2017-0881 DRWN: ABENJAMI CHKD: --- APPR: BRUPERT 2014/10/16 REV	QUALITY SYMBOL	GENERAL TOLERANCES (UNLESS SPECIFIED)		DIMENSION STYLE IN/MM		SCALE ---	DESIGN UNITS METRIC	THIRD ANGLE PROJECTION	
	▽=0	4 PLACES	mm	INCH	DRAWN BY RSTONE	DATE 2014/07/25	TITLE TERMINAL PLUG-5.0MM HORIZONTAL		
	∇=0	3 PLACES	±---	±---	CHECKED BY G FARNSW	DATE ---			
		2 PLACES	±---	±---	APPROVED BY JFMURPHY	DATE 2014/10/16	MATERIAL NO. SEE CHART		
	1 PLACE	±---	±---	ANGULAR ±---°		DOCUMENT NO. SD-39753-001		SHEET NO. 1 OF 1	
DRAFT WHERE APPLICABLE MUST REMAIN WITHIN DIMENSIONS				THIS DRAWING CONTAINS INFORMATION THAT IS PROPRIETARY TO MOLEX INCORPORATED AND SHOULD NOT BE USED WITHOUT WRITTEN PERMISSION					

X-ON Electronics

Largest Supplier of Electrical and Electronic Components

Click to view similar products for [Pluggable Terminal Blocks](#) category:

Click to view products by [Molex](#) manufacturer:

Other Similar products are found below :

[57.510.0053](#) [MC 1.5/ 6-ST-3.5 GY AU](#) [734-104](#) [734-302](#) [8-141-P](#) [8426620000](#) [860505](#) [860810](#) [GBPACX-12](#) [93.731.4953.0](#) [PV05-5,08-K](#)
[PVP02-5,00](#) [PVP03-3,50](#) [PVP04-3,50](#) [PVS02-5,00](#) [1-1986160-3](#) [1377680000](#) [1531000000](#) [1546228-5](#) [ELFH16150](#) [ELFP03110](#)
[ELFP10210](#) [ELFT06250](#) [ELVP03100](#) [1700101](#) [1700410](#) [1700425](#) [1702246](#) [1705229](#) [1710175](#) [1714537](#) [1717806](#) [1719600](#) [1728941](#)
[1734692](#) [1734795](#) [1736036](#) [1740194](#) [1740291](#) [1740628](#) [1740990](#) [1746952](#) [1750207](#) [1752441](#) [1752865](#) [1754115](#) [1754144](#) [1756913](#)
[1760051](#) [1760336](#)