

PCB LAYOUT: COMPONENT SIDE
RECOMMENDED PCB THICKNESS:
1.57±.18/.062±.007

2-*	AK7
1	AK8
SHT	REV

NOTE 9 ADDED
EC NO: UCP2018-0013
DRWN: GES 2017/07/05
CHKD: SHWARG 2017/07/28
APPR: I SHWARG

DESCRIPTION
REV

AK8

QUALITY SYMBOLS
= 0
= 0
= 0

GENERAL TOLERANCES (UNLESS SPECIFIED)	
	mm INCH
4 PLACES	± --- ± ---
3 PLACES	± --- ± .010
2 PLACES	± 0.25 ± .015
1 PLACE	± 0.38 ± ---
0 PLACE	± ±
ANGULAR ±1/2°	
DRAFT WHERE APPLICABLE MUST REMAIN WITHIN DIMENSIONS	

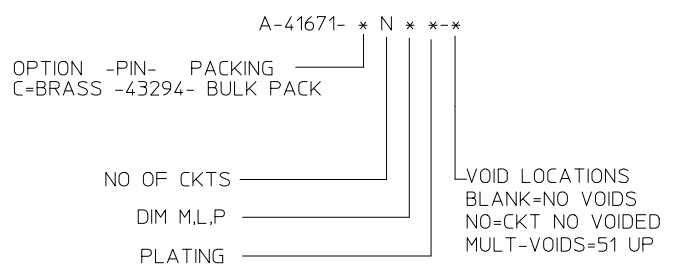
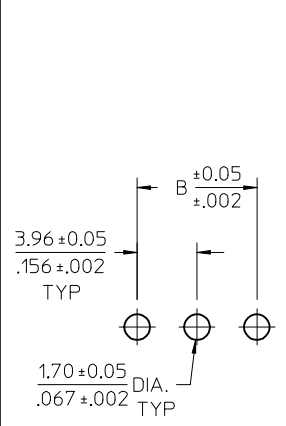
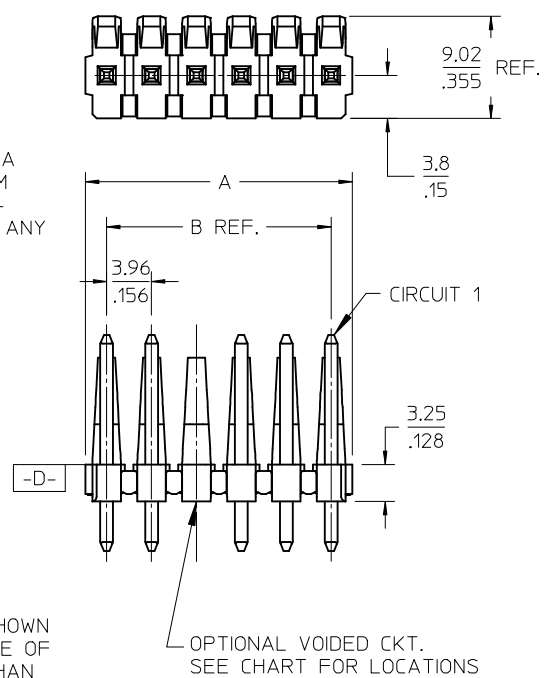
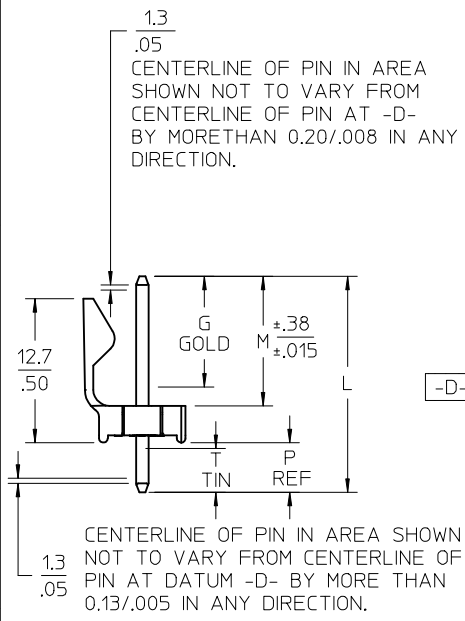
DIMENSION STYLE	
MM/IN	
DRAWN BY	DATE
JSCHAFFER	2004/04/05
CHECKED BY	DATE
KSAMIEC	2004/04/05
APPROVED BY	DATE
MARGULIS	2004/04/05
MATERIAL NO.	
SEE CHART	

SCALE	DESIGN UNITS
1.5:1	INCH
THIRD ANGLE PROJECTION	
TITLE	
KK 156 HEADER ASSEMBLY FRICTION LOCK STRAIGHT BREAKAWAY	
DOCUMENT NO.	
SD-41671-001	

SHEET NO.	
1 OF *	

- NOTES:
- MATERIAL: POLYESTER, 94V-0, MOLDED BLACK
 - FINISH: PER ES-88
 - (197) OVERALL REFLOWED MATTE TIN: 0.00152/.000060 MIN. OVER 0.00127/.000050 MIN. NICKEL OVERALL
 - (222) OVERALL MATTE TIN: 0.00254/.000100 MIN. OVERALL NICKEL: 0.00127/.000050 MIN.
 - (208) SELECT GOLD: 0.00038/.000015 MIN. SELECT TIN: 0.00254/.000100 MIN. OVERALL NICKEL UNDERPLATE: 0.00127/.000050 MIN.
 - (228) SELECT GOLD: 0.00076/.000030 MIN., SELECT TIN: 0.00254/.000100 MIN. OVERALL NICKEL UNDERPLATE: 0.00127/.000050 MIN.
 - (241) SELECT GOLD: 0.00051/.000020 MIN. SELECT TIN: 0.00254/.000100 MIN. OVERALL NICKEL UNDERPLATE: 0.00127/.000050 MIN.
 - PRODUCT SPECIFICATION: PS-08-50.
 - PACKAGING INFO: SEE TABLE.
 - SOLDERABILITY: PER SMES-152.
 - PIN PUSH-OUT FORCE: PRIOR TO SOLDERING, 3 LB MIN. FORCE IN EITHER DIRECTION SHALL BE REQUIRED TO PUSH THE PIN OUT OF THE HEADER.
 - PARTS ARE STACKABLE END TO END ON 3.96/.156 CENTERS. (SPACING TABS MUST BE REMOVED ON CIRCUIT SIZES 1-23 BEFORE PARTS ARE STACKABLE.)
 - THIS PART CONFORMS TO CLASS B REQUIREMENTS OF COSMETIC SPECIFICATION PS-45499-002.
 - TEXT ON PART IS FOR REFERENCE ONLY. TEXT AND TEXT LOCATION MAY VARY DEPENDING ON PART NUMBER AND/OR TOOL.

CKT	B	A
2	3.96 .156	6.78/7.87 .267/1.310
3	7.92 .312	10.74/11.84 .423/1.466
4	11.89 .468	14.71/15.80 .579/1.622
5	15.85 .624	18.67/19.76 .735/1.778
6	19.81 .780	22.63/23.72 .891/1.934
7	23.77 .936	26.59/27.69 1.047/1.090
8	27.74 1.092	30.56/31.65 1.203/1.246
9	31.70 1.248	34.52/35.61 1.359/1.402
10	35.66 1.404	38.48/39.57 1.515/1.558
11	39.62 1.560	42.44/43.54 1.671/1.714
12	43.59 1.716	46.41/47.50 1.827/1.870
13	47.55 1.872	50.37/51.46 1.983/2.026
14	51.51 2.028	54.33/55.42 2.139/2.182
15	55.47 2.184	58.29/59.39 2.295/2.338
16	59.44 2.340	62.26/63.35 2.451/2.494
17	63.40 2.496	66.22/67.31 2.607/2.650
18	67.36 2.652	70.18/71.27 2.763/2.806
19	71.32 2.808	74.14/75.23 2.919/2.962
20	75.29 2.964	78.11/79.20 3.075/3.118
21	79.25 3.120	82.07/83.16 3.231/3.274
22	83.21 3.276	86.03/87.12 3.387/3.430
23	87.17 3.432	89.94/91.08 3.541/3.586
24	91.14 3.588	93.85/95.00 3.695/3.740



- NOTES:
- MATERIAL: POLYESTER, 94V-0, MOLDED BLACK
 - FINISH: PER ES-88
 - (197) OVERALL REFLOWED MATTE TIN: 0.00152/.000060 MIN. OVER 0.00127/.000050 MIN. NICKEL OVERALL
 - (222) OVERALL MATTE TIN: 0.00254/.000100 MIN. OVERALL NICKEL: 0.00127/.000050 MIN.
 - (208) SELECT GOLD: 0.00038/.000015 MIN. SELECT TIN: 0.00254/.000100 MIN. OVERALL NICKEL UNDERPLATE: 0.00127/.000050 MIN.
 - (228) SELECT GOLD: 0.00076/.000030 MIN., SELECT TIN: 0.00254/.000100 MIN. OVERALL NICKEL UNDERPLATE: 0.00127/.000050 MIN.
 - (241) SELECT GOLD: 0.00051/.000020 MIN. SELECT TIN: 0.00254/.000100 MIN. OVERALL NICKEL UNDERPLATE: 0.00127/.000050 MIN.
 - PRODUCT SPECIFICATION: PS-08-50.
 - PACKAGING INFO: SEE TABLE.
 - SOLDERABILITY: PER SMES-152.
 - PIN PUSH-OUT FORCE: PRIOR TO SOLDERING, 3 LB MIN. FORCE IN EITHER DIRECTION SHALL BE REQUIRED TO PUSH THE PIN OUT OF THE HEADER.
 - PARTS ARE STACKABLE END TO END ON 3.96/.156 CENTERS. (SPACING TABS MUST BE REMOVED ON CIRCUIT SIZES 1-23 BEFORE PARTS ARE STACKABLE.)
 - THIS PART CONFORMS TO CLASS B REQUIREMENTS OF COSMETIC SPECIFICATION PS-45499-002.
 - TEXT ON PART IS FOR REFERENCE ONLY. TEXT AND TEXT LOCATION MAY VARY DEPENDING ON PART NUMBER AND/OR TOOL.

CKT	B	A
2	3.96 .156	6.78/7.87 .267/1.310
3	7.92 .312	10.74/11.84 .423/1.466
4	11.89 .468	14.71/15.80 .579/1.622
5	15.85 .624	18.67/19.76 .735/1.778
6	19.81 .780	22.63/23.72 .891/1.934
7	23.77 .936	26.59/27.69 1.047/1.090
8	27.74 1.092	30.56/31.65 1.203/1.246
9	31.70 1.248	34.52/35.61 1.359/1.402
10	35.66 1.404	38.48/39.57 1.515/1.558
11	39.62 1.560	42.44/43.54 1.671/1.714
12	43.59 1.716	46.41/47.50 1.827/1.870
13	47.55 1.872	50.37/51.46 1.983/2.026
14	51.51 2.028	54.33/55.42 2.139/2.182
15	55.47 2.184	58.29/59.39 2.295/2.338
16	59.44 2.340	62.26/63.35 2.451/2.494
17	63.40 2.496	66.22/67.31 2.607/2.650
18	67.36 2.652	70.18/71.27 2.763/2.806
19	71.32 2.808	74.14/75.23 2.919/2.962
20	75.29 2.964	78.11/79.20 3.075/3.118
21	79.25 3.120	82.07/83.16 3.231/3.274
22	83.21 3.276	86.03/87.12 3.387/3.430
23	87.17 3.432	89.94/91.08 3.541/3.586
24	91.14 3.588	93.85/95.00 3.695/3.740

PCB LAYOUT: COMPONENT SIDE
RECOMMENDED PCB THICKNESS:
1.57±.18/.062±.007

NOTE 9 ADDED
EC NO: UCP2018-0013
DRWN: GES 2017/07/05
CHKD: 2017/07/28
APPR: ISHWARG
DESCRIPTION
REV

QUALITY SYMBOLS
▽ = 0
▽ = 0
▽ = 0

GENERAL TOLERANCES (UNLESS SPECIFIED)	DIMENSION STYLE	
	mm	INCH
4 PLACES	± ---	± ---
3 PLACES	± ---	± .010
2 PLACES	± 0.25	± .015
1 PLACE	± 0.38	± ---
0 PLACE	±	±
ANGULAR ±1/2°		
DRAFT WHERE APPLICABLE MUST REMAIN WITHIN DIMENSIONS		

DRAWN BY		DATE
JSCHAFFER		2004/04/05
CHECKED BY		DATE
KSAMIEC		2004/04/05
APPROVED BY		DATE
MARGULIS		2004/04/05
MATERIAL NO.		
SEE CHART		

SCALE	DESIGN UNITS	THIRD ANGLE PROJECTION
1.5:1	INCH	☉
KK 156 HEADER ASSEMBLY FRICTION LOCK STRAIGHT BREAKAWAY		
DOCUMENT NO.		SHEET NO.
SD-41671-001		1 OF *
THIS DRAWING CONTAINS INFORMATION THAT IS PROPRIETARY TO MOLEX INCORPORATED AND SHOULD NOT BE USED WITHOUT WRITTEN PERMISSION		

Ckts	Material No	Engineer Number	Material No	Engineer Number	Material No	Engineer Number
2	26-48-1025	A-41671-C02A197	41671-0001	A-41671-C02A208	41671-0024	A-41671-C02A228
3	26-48-1035	A-41671-C03A197	41671-0002	A-41671-C03A208	41671-0025	A-41671-C03A228
4	26-48-1045	A-41671-C04A197	41671-0003	A-41671-C04A208	41671-0026	A-41671-C04A228
5	26-48-1055	A-41671-C05A197	41671-0004	A-41671-C05A208	41671-0027	A-41671-C05A228
6	26-48-1065	A-41671-C06A197	41671-0005	A-41671-C06A208	41671-0028	A-41671-C06A228
7	26-48-1075	A-41671-C07A197	41671-0006	A-41671-C07A208	41671-0029	A-41671-C07A228
8	26-48-1085	A-41671-C08A197	41671-0007	A-41671-C08A208	41671-0030	A-41671-C08A228
9	26-48-1095	A-41671-C09A197	41671-0008	A-41671-C09A208	41671-0031	A-41671-C09A228
10	26-48-1105	A-41671-C10A197	41671-0009	A-41671-C10A208	41671-0032	A-41671-C10A228
11	26-48-1115	A-41671-C11A197	41671-0010	A-41671-C11A208	41671-0033	A-41671-C11A228
12	26-48-1125	A-41671-C12A197	41671-0011	A-41671-C12A208	41671-0034	A-41671-C12A228
13	26-48-1135	A-41671-C13A197	41671-0012	A-41671-C13A208	41671-0035	A-41671-C13A228
14	26-48-1145	A-41671-C14A197	41671-0013	A-41671-C14A208	41671-0036	A-41671-C14A228
15	26-48-1155	A-41671-C15A197	41671-0014	A-41671-C15A208	41671-0037	A-41671-C15A228
16	26-48-1165	A-41671-C16A197	41671-0015	A-41671-C16A208	41671-0038	A-41671-C16A228
17	26-48-1175	A-41671-C17A197	41671-0016	A-41671-C17A208	41671-0039	A-41671-C17A228
18	26-48-1185	A-41671-C18A197	41671-0017	A-41671-C18A208	41671-0040	A-41671-C18A228
19	26-48-1195	A-41671-C19A197	41671-0018	A-41671-C19A208	41671-0041	A-41671-C19A228
20	26-48-1205	A-41671-C20A197	41671-0019	A-41671-C20A208	41671-0042	A-41671-C20A228
21	26-48-1215	A-41671-C21A197	41671-0020	A-41671-C21A208	41671-0043	A-41671-C21A228
22	26-48-1225	A-41671-C22A197	41671-0021	A-41671-C22A208	41671-0044	A-41671-C22A228
23	26-48-1235	A-41671-C23A197	41671-0022	A-41671-C23A208	41671-0045	A-41671-C23A228
24	26-48-1245	A-41671-C24A197	41671-0023	A-41671-C24A208	41671-0046	A-41671-C24A228
	STD TIN CATALOG PRODUCT		STD 15 GOLD CATALOG PRODUCT		STD 30 GOLD CATALOG PRODUCT	

REV: AK7	ECR/ECN INFORMATION: EC. NO. UCP2016-1581 DATE: 12/14/2015	TITLE: KK .156 HEADER ASSEMBLY FRICITION LOCK STRAIGHT 2-24 CKTS.	SHEET No. - 2 -
DOCUMENT NUMBER: SD - 41671 - 001		CREATED / REVISED BY: MKIPPER	CHECKED BY: JBELL
		APPROVED BY: FSMITH	

Group No:	A-41671-CNA241
Pin No:	43294-0241
Plating:	241 GOLD
Pin Length L	.750 / 19.05
Mating M	.450 / 11.43
Gold Loc G	.270/ 6.86
PC Tail P	.172 / 4.37
Tin Loc T	.160/ 4.06
Voided Ckts	NONE
Pack Per	PK-41671-001

Group No:	A-41671-CNA228
Pin No:	43294-0237
Plating:	228 GOLD
Pin Length L	.750 / 19.05
Mating M	.450 / 11.43
Gold Loc G	.270/ 6.86
PC Tail P	.172 / 4.37
Tin Loc T	.160/ 4.06
Voided Ckts	NONE
Pack Per	PK-41671-001

Group No:	A-41671-CND197
Pin No:	43294-0193
Plating:	197 TIN
Pin Length L	.700 / 17.78
Mating M	.447 / 11.35
Gold Loc G	NA
PC Tail P	.125 / 3.18
Tin Loc T	OVERALL
Voided Ckts	NONE
Pack Per	PK-41671-001

Group No:	A-41671-CNB197
Pin No:	43294-0240
Plating:	197 TIN
Pin Length L	.750 / 19.05
Mating M	.523 / 13.28
Gold Loc G	NA
PC Tail P	.099 / 2.51
Tin Loc T	OVERALL
Voided Ckts	NONE
Pack Per	PK-41671-001

Ckts	Material No	Engineer Number
2	26-48-2025	A-41671-C02A241
3	26-48-2035	A-41671-C03A241
4	26-48-2045	A-41671-C04A241
5	26-48-2055	A-41671-C05A241
6	26-48-2065	A-41671-C06A241
7	26-48-2075	A-41671-C07A241
8	26-48-2085	A-41671-C08A241
9	26-48-2095	A-41671-C09A241
10	26-48-2105	A-41671-C10A241
11	26-48-2115	A-41671-C11A241
12	26-48-2125	A-41671-C12A241
13	26-48-2135	A-41671-C13A241
14	26-48-2145	A-41671-C14A241
15	26-48-2155	A-41671-C15A241
16	26-48-2165	A-41671-C16A241
17	26-48-2175	A-41671-C17A241
18	26-48-2185	A-41671-C18A241
19	26-48-2195	A-41671-C19A241
20	26-48-2205	A-41671-C20A241
21	26-48-2215	A-41671-C21A241
22	26-48-2225	A-41671-C22A241
23	26-48-2235	A-41671-C23A241
24	26-48-2245	A-41671-C24A241

Material No	Engineer Number
26-48-9026	A-41671-C02A228
41671-0047	A-41671-C03A228
41671-0048	A-41671-C04A228
26-48-9056	A-41671-C05A228
41671-0049	A-41671-C06A228
41671-0050	A-41671-C07A228
41671-0051	A-41671-C08A228
26-48-9096	A-41671-C09A228
26-48-9106	A-41671-C10A228
41671-0052	A-41671-C11A228
26-48-9126	A-41671-C12A228
41671-0053	A-41671-C13A228
41671-0054	A-41671-C14A228
41671-0055	A-41671-C15A228
41671-0056	A-41671-C16A228
41671-0057	A-41671-C17A228
41671-0058	A-41671-C18A228
41671-0059	A-41671-C19A228
41671-0060	A-41671-C20A228
41671-0061	A-41671-C21A228
41671-0062	A-41671-C22A228
41671-0063	A-41671-C23A228
26-48-9246	A-41671-C24A228

Material No	Engineer Number
26-48-9023	A-41671-C02D197
26-48-9033	A-41671-C03D197
26-48-9043	A-41671-C04D197
26-48-9053	A-41671-C05D197
26-48-9063	A-41671-C06D197
26-48-9073	A-41671-C07D197
26-48-9083	A-41671-C08D197
26-48-9093	A-41671-C09D197
26-48-9103	A-41671-C10D197
26-48-9113	A-41671-C11D197
26-48-9123	A-41671-C12D197
26-48-9133	A-41671-C13D197
26-48-9143	A-41671-C14D197
26-48-9153	A-41671-C15D197
26-48-9163	A-41671-C16D197
26-48-9173	A-41671-C17D197
26-48-9183	A-41671-C18D197
26-48-9193	A-41671-C19D197
26-48-9203	A-41671-C20D197
26-48-9213	A-41671-C21D197
26-48-9223	A-41671-C22D197
26-48-9233	A-41671-C23D197
26-48-9243	A-41671-C24D197

Material No	Engineer Number
41671-0064	A-41671-C02B197
41671-0065	A-41671-C03B197
41671-0066	A-41671-C04B197
41671-0067	A-41671-C05B197
41671-0068	A-41671-C06B197
41671-0069	A-41671-C07B197
41671-0070	A-41671-C08B197
26-48-6095	A-41671-C09B197
41671-0071	A-41671-C10B197
41671-0072	A-41671-C11B197
41671-0073	A-41671-C12B197
41671-0074	A-41671-C13B197
41671-0075	A-41671-C14B197
41671-0076	A-41671-C15B197
41671-0077	A-41671-C16B197
41671-0078	A-41671-C17B197
41671-0079	A-41671-C18B197
41671-0080	A-41671-C19B197
41671-0081	A-41671-C20B197
41671-0082	A-41671-C21B197
41671-0083	A-41671-C22B197
41671-0084	A-41671-C23B197
26-48-6245	A-41671-C24B197

REV: AK7	ECR/ECN INFORMATION: EC. NO. UCP2016-1581 DATE: 12/14/2015	TITLE: KK .156 HEADER ASSEMBLY FRICTION LOCK STRAIGHT 2-24 CKTS.	SHEET No. - 3 -
DOCUMENT NUMBER: SD - 41671 - 001		CREATED / REVISED BY: MKIPPER	CHECKED BY: JBELL
		APPROVED BY: FSMITH	

Group No:	A-41671-CNF197
Pin No:	43294-0283
Plating:	197 TIN
Pin Length L	.800 / 20.32
Mating M	.480 / 12.19
Gold Loc G	NA
PC Tail P	.192 / 4.88
Tin Loc T	OVERALL
Voided Ckts	NONE
Pack Per	PK-41671-001

Group No:	A-41671-CNB241
Pin No:	43294-0241
Plating:	241 GOLD
Pin Length L	.750 / 19.05
Mating M	.523 / 13.28
Gold Loc G	.270 / 6.86
PC Tail P	.099 / 2.51
Tin Loc T	.160 / 4.06
Voided Ckts	NONE
Pack Per	PK-41671-001

Group No:	A-41671-CNF241
Pin No:	43294-0284
Plating:	241 GOLD
Pin Length L	.800 / 20.32
Mating M	.480 / 12.19
Gold Loc G	.350 / 8.89
PC Tail P	.192 / 4.88
Tin Loc T	.200 / 5.08
Voided Ckts	NONE
Pack Per	PK-41671-001

Group No:	A-41671-CNN197
Pin No:	43294-0500
Plating:	197 TIN
Pin Length L	1.030 / 26.16
Mating M	.448 / 11.38
Gold Loc G	NA
PC Tail P	.454 / 11.53
Tin Loc T	OVERALL
Voided Ckts	NONE
Pack Per	PK-41671-001

Ckts	Material No	Engineer Number
2	26-48-4026	A-41671-C02F197
3	26-48-4036	A-41671-C03F197
4	26-48-4046	A-41671-C04F197
5	26-48-4056	A-41671-C05F197
6	26-48-4066	A-41671-C06F197
7	26-48-4076	A-41671-C07F197
8	26-48-4086	A-41671-C08F197
9	26-48-4096	A-41671-C09F197
10	26-48-4106	A-41671-C10F197
11	26-48-4116	A-41671-C11F197
12	26-48-4126	A-41671-C12F197
13	26-48-4136	A-41671-C13F197
14	26-48-4146	A-41671-C14F197
15	26-48-4156	A-41671-C15F197
16	26-48-4166	A-41671-C16F197
17	26-48-4176	A-41671-C17F197
18	26-48-4186	A-41671-C18F197
19	26-48-4196	A-41671-C19F197
20	26-48-4206	A-41671-C20F197
21	26-48-4216	A-41671-C21F197
22	26-48-4226	A-41671-C22F197
23	26-48-4236	A-41671-C23F197
24	26-48-4246	A-41671-C24F197

Material No	Engineer Number
26-48-2027	A-41671-C02B241
26-48-2037	A-41671-C03B241
26-48-2047	A-41671-C04B241
26-48-2057	A-41671-C05B241
26-48-2067	A-41671-C06B241
26-48-2077	A-41671-C07B241
26-48-2087	A-41671-C08B241
26-48-2097	A-41671-C09B241
26-48-2107	A-41671-C10B241
26-48-2117	A-41671-C11B241
26-48-2127	A-41671-C12B241
26-48-2137	A-41671-C13B241
26-48-2147	A-41671-C14B241
26-48-2157	A-41671-C15B241
26-48-2167	A-41671-C16B241
26-48-2177	A-41671-C17B241
26-48-2187	A-41671-C18B241
26-48-2197	A-41671-C19B241
26-48-2207	A-41671-C20B241
26-48-2217	A-41671-C21B241
26-48-2227	A-41671-C22B241
26-48-2237	A-41671-C23B241
26-48-2247	A-41671-C24B241

Material No	Engineer Number
41671-0250	A-41671-C02F241
41671-0350	A-41671-C03F241
41671-0450	A-41671-C04F241
41671-0550	A-41671-C05F241
41671-0650	A-41671-C06F241
41671-0750	A-41671-C07F241
41671-0850	A-41671-C08F241
41671-0950	A-41671-C09F241
41671-1050	A-41671-C10F241
41671-1150	A-41671-C11F241
41671-1250	A-41671-C12F241
41671-1350	A-41671-C13F241
41671-1450	A-41671-C14F241
41671-1550	A-41671-C15F241
41671-1650	A-41671-C16F241
41671-1750	A-41671-C17F241
41671-1850	A-41671-C18F241
41671-1950	A-41671-C19F241
41671-2050	A-41671-C20F241
41671-2150	A-41671-C21F241
41671-2250	A-41671-C22F241
41671-2350	A-41671-C23F241
41671-2450	A-41671-C24F241

Material No	Engineer Number
	A-41671-C02N197
	A-41671-C03N197
	A-41671-C04N197
	A-41671-C05N197
	A-41671-C06N197
	A-41671-C07N197
	A-41671-C08N197
	A-41671-C09N197
	A-41671-C10N197
	A-41671-C11N197
	A-41671-C12N197
	A-41671-C13N197
	A-41671-C14N197
	A-41671-C15N197
	A-41671-C16N197
	A-41671-C17N197
	A-41671-C18N197
	A-41671-C19N197
	A-41671-C20N197
	A-41671-C21N197
	A-41671-C22N197
	A-41671-C23N197
26-48-8247	A-41671-C24N197

REV: AK7	ECR/ECN INFORMATION: EC. NO. UCP2016-1581 DATE: 12/14/2015	TITLE: KK .156 HEADER ASSEMBLY FRICTION LOCK STRAIGHT 2-24 CKTS.	SHEET No. - 4 -
DOCUMENT NUMBER: SD - 41671 - 001		CREATED / REVISED BY: MKIPPER	CHECKED BY: JBELL
		APPROVED BY: FSMITH	

Group No:	A-41671-CNP228
Pin No:	43294-0282
Plating:	228 30 GOLD
Pin Length L	.800 / 20.32
Mating M	.523 / 13.28
Gold Loc G	.350 / 8.89
PC Tail P	.149 / 3.78
Tin Loc T	.200 / 5.08
Voided Ckts	NONE
Pack Per	PK-41671-001

Group No:	A-41671-CNR208
Pin No:	43294-0344
Plating:	208 15 GOLD
Pin Length L	.870 / 22.10
Mating M	.450 / 11.43
Gold Loc G	.400 / 10.16
PC Tail P	.292 / 7.42
Tin Loc T	.200 / 5.08
Voided Ckts	NONE
Pack Per	PK-41671-001

Group No:	A-41671-CNT197
Pin No:	43294-0572
Plating:	197 TIN
Pin Length L	1.100 / 27.94
Mating M	.486 / 12.34
Gold Loc G	NA
PC Tail P	.486 / 12.34
Tin Loc T	OVERALL
Voided Ckts	NONE
Pack Per	PK-41671-001

Group No:	A-41671-CNA197
Pin No:	43294-0240
Plating:	197 TIN
Pin Length L	.750 / 19.05
Mating M	.450 / 11.43
Gold Loc G	NA
PC Tail P	.172 / 4.37
Tin Loc T	OVERALL
Voided Ckts	NONE
Pack Per	PK-41671-001

Ckts	Material No	Engineer Number
2	41671-2451	A-41671-C02P228
3	41671-2452	A-41671-C03P228
4	41671-2453	A-41671-C04P228
5	41671-2454	A-41671-C05P228
6	41671-2455	A-41671-C06P228
7	41671-2456	A-41671-C07P228
8	41671-2457	A-41671-C08P228
9	41671-2458	A-41671-C09P228
10	41671-2459	A-41671-C10P228
11	41671-2460	A-41671-C11P228
12	41671-2461	A-41671-C12P228
13	41671-2462	A-41671-C13P228
14	41671-2463	A-41671-C14P228
15	41671-2464	A-41671-C15P228
16	41671-2465	A-41671-C16P228
17	41671-2466	A-41671-C17P228
18	41671-2467	A-41671-C18P228
19	41671-2468	A-41671-C19P228
20	41671-2469	A-41671-C20P228
21	41671-2470	A-41671-C21P228
22	41671-2471	A-41671-C22P228
23	41671-2472	A-41671-C23P228
24	41671-2473	A-41671-C24P228

Material No	Engineer Number
41671-2474	A-41671-C02R208
41671-2475	A-41671-C03R208
41671-2476	A-41671-C04R208
41671-2477	A-41671-C05R208
41671-2478	A-41671-C06R208
41671-2479	A-41671-C07R208
41671-2480	A-41671-C08R208
41671-2481	A-41671-C09R208
41671-2482	A-41671-C10R208
41671-2483	A-41671-C11R208
41671-2484	A-41671-C12R208
41671-2485	A-41671-C13R208
41671-2486	A-41671-C14R208
41671-2487	A-41671-C15R208
41671-2488	A-41671-C16R208
41671-2489	A-41671-C17R208
41671-2490	A-41671-C18R208
41671-2491	A-41671-C19R208
41671-2492	A-41671-C20R208
41671-2493	A-41671-C21R208
41671-2494	A-41671-C22R208
41671-2495	A-41671-C23R208
41671-2496	A-41671-C24R208

Material No	Engineer Number
41671-3400	A-41671-C02T197
41671-3401	A-41671-C03T197
41671-3402	A-41671-C04T197
41671-3403	A-41671-C05T197
41671-3404	A-41671-C06T197
41671-3405	A-41671-C07T197
41671-3406	A-41671-C08T197
41671-3407	A-41671-C09T197
41671-3408	A-41671-C10T197
41671-3409	A-41671-C11T197
41671-3410	A-41671-C12T197
41671-3411	A-41671-C13T197
41671-3412	A-41671-C14T197
41671-3413	A-41671-C15T197
41671-3414	A-41671-C16T197
41671-3415	A-41671-C17T197
41671-3416	A-41671-C18T197
41671-3417	A-41671-C19T197
41671-3418	A-41671-C20T197
41671-3419	A-41671-C21T197
41671-3420	A-41671-C22T197
41671-3421	A-41671-C23T197
41671-3422	A-41671-C24T197

Material No	Engineer Number
41671-3423	A-41671-C02A197
41671-3424	A-41671-C03A197
41671-3425	A-41671-C04A197
41671-3426	A-41671-C05A197
41671-3427	A-41671-C06A197
41671-3428	A-41671-C07A197
41671-3429	A-41671-C08A197
41671-3430	A-41671-C09A197
41671-3431	A-41671-C10A197
41671-3432	A-41671-C11A197
41671-3433	A-41671-C12A197
41671-3434	A-41671-C13A197
41671-3435	A-41671-C14A197
41671-3436	A-41671-C15A197
41671-3437	A-41671-C16A197
41671-3438	A-41671-C17A197
41671-3439	A-41671-C18A197
41671-3440	A-41671-C19A197
41671-3441	A-41671-C20A197
41671-3442	A-41671-C21A197
41671-3443	A-41671-C22A197
41671-3444	A-41671-C23A197
41671-3445	A-41671-C24A197

REV: AK7	ECR/ECN INFORMATION: EC. NO. UCP2016-1581 DATE: 12/14/2015	TITLE: KK .156 HEADER ASSEMBLY FRICTION LOCK STRAIGHT 2-24 CKTS.	SHEET No. - 5 -
DOCUMENT NUMBER: SD - 41671 - 001		CREATED / REVISED BY: MKIPPER	CHECKED BY: JBELL
		APPROVED BY: FSMITH	

Group No:	A-41671-CNA197-*	
Pin No:	SAME AS GROUP NO. A-41671-CNA197 ON SHEET 2	
Plating:		
Pin Length L		
Mating M		
Gold Loc G		
PC Tail P		
Tin Loc T		
Voided Ckts	SEE CHART BELOW	
Pack Per		
Material No	Engineer Number	Void Ckts
26-50-3030	A-41671-C03A197-2	2
26-50-3040	A-41671-C04A197-2	2
26-50-3050	A-41671-C05A197-2	2
26-50-3060	A-41671-C06A197-2	2
26-50-3070	A-41671-C07A197-2	2
26-50-3080	A-41671-C08A197-2	2
26-50-3090	A-41671-C09A197-2	2
26-50-3100	A-41671-C10A197-2	2
26-50-3110	A-41671-C11A197-2	2
26-50-3120	A-41671-C12A197-2	2
26-50-3130	A-41671-C13A197-2	2
26-50-3140	A-41671-C14A197-2	2
26-50-3150	A-41671-C15A197-2	2
26-50-3160	A-41671-C16A197-2	2
26-50-3170	A-41671-C17A197-2	2
26-50-3180	A-41671-C18A197-2	2
26-50-3190	A-41671-C19A197-2	2
26-50-3200	A-41671-C20A197-2	2
26-50-3210	A-41671-C21A197-2	2
26-50-3220	A-41671-C22A197-2	2
26-50-3230	A-41671-C23A197-2	2
A-41671-CNA197 WITH VOIDS		

Group No:	A-41671-CNA197-* CONT'D		
Pin No:	SAME AS GROUP NO. A-41671-CNA197 ON SHEET 2		
Plating:			
Pin Length L			
Mating M			
Gold Loc G			
PC Tail P			
Tin Loc T			
Voided Ckts	SEE CHART BELOW		
Pack Per			
Material No	Engineer Number	Void Ckts	
26-50-3073	A-41671-C07A197-3	3	
26-50-5080	A-41671-C08A197-51	2,4	
26-50-3063	A-41671-C06A197-3	3	
26-50-3071	A-41671-C07A197-52	2,4,6	
26-50-3051	A-41671-C05A197-51	2,4	
26-50-3062	A-41671-C06A197-4	4	
26-50-3068	A-41671-C06A197-6	6	
26-50-3111	A-41671-C11A197-51	5,10	
26-50-3065	A-41671-C06A197-5	5	
26-50-3054	A-41671-C05A197-4	4	
26-50-3154	A-41671-C15A197-4	4	
26-50-3145	A-41671-C14A197-55	2,4,8,12	
26-50-3155	A-41671-C15A197-54	3,10,13	
26-50-3066	A-41671-C6A197-54	2,4	
26-50-3108	A-41671-C10A197-53	3,10	
26-50-3103	A-41671-C10A197-7	7	
26-50-3087	A-41671-C8A197-52	5,7	
26-50-5081	A-41671-C08A197-6	6	
26-50-3132	A-41671-C13A197-5	5	
26-50-3165	A-41671-C16A197-52	2,15	
41671-0085	A-41671-C10A197-56	5,8	
A-41671-CNA197 WITH VOIDS			

Group No:	A-41671-CNA197-* CONT'D		
Pin No:	SAME AS GROUP NO. A-41671-CNA197 ON SHEET 2		
Plating:			
Pin Length L			
Mating M			
Gold Loc G			
PC Tail P			
Tin Loc T			
Voided Ckts	SEE CHART BELOW		
Pack Per			
Material No	Engineer Number	Void Ckts	
26-50-3202	A-41671-C20A197-51	2,4,6,8 10,12,14,16	
26-50-3167	A-41671-C16A197-53	2,4,6,8	
26-50-3152	A-41671-C15A197-52	4,6,8,10,12,14	
26-50-3126	A-41671-C12A197-53	2,3,5,6,8,10	
26-50-3240	A-41671-C24A197-2	2	
26-50-5090	A-41671-C10A197-55	2,5	
41671-3100	A-41671-C05A197-3	3	
41671-3112	A-41671-C14A197-12	12	
41671-3113	A-41671-C14A197-51	11, 12	
41671-3446	A-41671-C06A197-55	1, 3, 5	
41671-3470	A-41671-C16A197-15	15	
41671-3471	A-41671-C18A197-16	16	
41671-3474	A-41671-C04A197-3	3	
A-41671-CNA197 WITH VOIDS			

REV: AK7	ECR/ECN INFORMATION: EC. NO. UCP2016-1581 DATE: 12/14/2015	TITLE: KK .156 HEADER ASSEMBLY FRICTION LOCK STRAIGHT 2-24 CKTS.	SHEET No. - 6 -
DOCUMENT NUMBER: SD - 41671 - 001		CREATED / REVISED BY: MKIPPER	CHECKED BY: JBELL
		APPROVED BY: FSMITH	

Group No:	A-41671-CNA228-*	
Pin No:	<p style="text-align: center;">SAME AS GROUP NO. A-41671-CNA228 ON SHEET 3</p>	
Plating:		
Pin Length L		
Mating M		
Gold Loc G		
PC Tail P		
Tin Loc T		
Voided Ckts	SEE CHART BELOW	
Pack Per		
Material No	Engineer Number	Void Ckts
26-49-7054	A-41671-C5A228-2	2
41671-3473	A-41671-C3A228-2	2
A-41671-CNA228 W/VOIDS		

Group No:	A-41671-CND197-*	
Pin No:	<p style="text-align: center;">SAME AS GROUP NO. A-41671-CND197 ON SHEET 3</p>	
Plating:		
Pin Length L		
Mating M		
Gold Loc G		
PC Tail P		
Tin Loc T		
Voided Ckts	SEE CHART BELOW	
Pack Per		
Material No	Engineer Number	Void Ckts
26-49-6110	A-41671-C11D197-8	8
41671-3469	A-41671-C05D197-51	2, 4
41671-3472	A-41671-C03D197-2	2
A-41671-CND197 W/VOIDS		

Group No:	A-41671-CNB197-*	
Pin No:	43294-0240	
Plating:	197 TIN	
Pin Length L	.750 / 19.05	
Mating M	.517 +/- .020 13.13 +/- 0.51	
Gold Loc G	NA	
PC Tail P	.105 +/- .020 2.67 +/- 0.51	
Tin Loc T	OVERALL	
Voided Ckts	SEE CHART BELOW	
Pack Per	PK-41671-001	
Material No	Engineer Number	Void Ckts
50-36-1877	A-41671-C16B197-51	2,5,7,9,10,11 13,14
A-41671-CNB197 W/VOIDS		

<u>REV:</u>	<u>ECR/ECN INFORMATION:</u>	<u>TITLE:</u>	<u>SHEET No.</u>
AK7	<u>EC. NO.</u> UCP2016-1581 <u>DATE:</u> 12/14/2015	KK .156 HEADER ASSEMBLY FRICION LOCK STRAIGHT 2-24 CKTS.	- 7 -
<u>DOCUMENT NUMBER:</u>		<u>CREATED / REVISED BY:</u>	<u>CHECKED BY:</u>
SD - 41671 - 001		MKIPPER	JBELL
		<u>APPROVED BY:</u>	
		FSMITH	

Group No:		A-41671-CNA222
Pin No:		43294-0238
Plating:		222 Tin
Pin Length L		.750/19.05
Mating M		.450/11.43
Gold Loc G		N/A
PC Tail P		.172/4.37
Tin Loc T		OVERALL
Voided Ckts		NONE
Pack Per		PK-41671-001
Ckts	Material No	Engineer Number
5	50-36-2287	A-41671-C05A222

<u>REV:</u> AK7	<u>ECR/ECN INFORMATION:</u> EC. NO. UCP2016-1581 DATE: 12/14/2015	<u>TITLE:</u> KK .156 HEADER ASSEMBLY FRICTION LOCK STRAIGHT 2-24 CKTS.	<u>SHEET No.</u> - 8 -
<u>DOCUMENT NUMBER:</u> SD - 41671 - 001		<u>CREATED / REVISED BY:</u> MKIPPER	<u>CHECKED BY:</u> JBELL
		<u>APPROVED BY:</u> FSMITH	

X-ON Electronics

Largest Supplier of Electrical and Electronic Components

Click to view similar products for [Headers & Wire Housings](#) category:

Click to view products by [Molex](#) manufacturer:

Other Similar products are found below :

[892-18-020-10-001101](#) [58102-G61-06LF](#) [582553-1](#) [0009485154](#) [009176003701906](#) [0050291907](#) [LY20-4P-DT1-P1E-BR](#) [02.125.8002.8](#)
[609-3404](#) [61062-3](#) [622-0430](#) [622-3653LF](#) [63453-116](#) [636-1030](#) [636-1427](#) [636-3427](#) [636-4007](#) [641938-9](#) [641991-4](#) [644827-2](#) [65817-010LF](#)
[65817-015LF](#) [65863-015LF](#) [66207-023LF](#) [67095-007LF](#) [67601157](#) [68648-049](#) [70.362.1628.0](#) [70-4210](#) [70-4226B](#) [70-4853B](#) [707-5020](#) [707-5028](#) [71.350.2428.0](#) [71918-208LF](#) [71961-016LF](#) [733-134](#) [733-162](#) [754199-000](#) [760-3052](#) [787-8014-00](#) [79531-3000](#) [FCN-360C032-B](#) [FCN-367T-T012/H](#) [FCN-723D010/2](#) [80.063.4001.1](#) [800-90-001-10-001000](#) [800-90-010-10-002000](#) [801-43-002-10-013000](#) [801-43-006-10-002000](#)